

1984

Industrial Resources: Barren County - Glasgow

Kentucky Library Research Collections
Western Kentucky University, spcol@wku.edu

Follow this and additional works at: https://digitalcommons.wku.edu/barren_cty

 Part of the [Business Administration, Management, and Operations Commons](#), [Growth and Development Commons](#), and the [Infrastructure Commons](#)

Recommended Citation

Kentucky Library Research Collections, "Industrial Resources: Barren County - Glasgow" (1984). *Barren County*. Paper 28.
https://digitalcommons.wku.edu/barren_cty/28

This Report is brought to you for free and open access by TopSCHOLAR®. It has been accepted for inclusion in Barren County by an authorized administrator of TopSCHOLAR®. For more information, please contact topscholar@wku.edu.

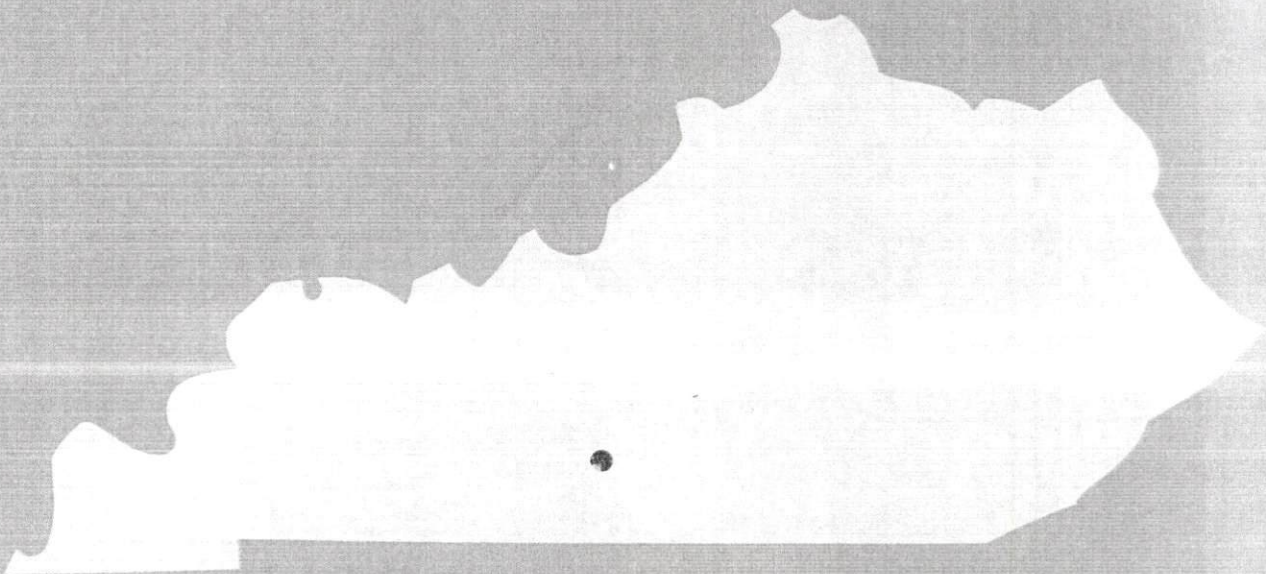
IR

Barron County

365

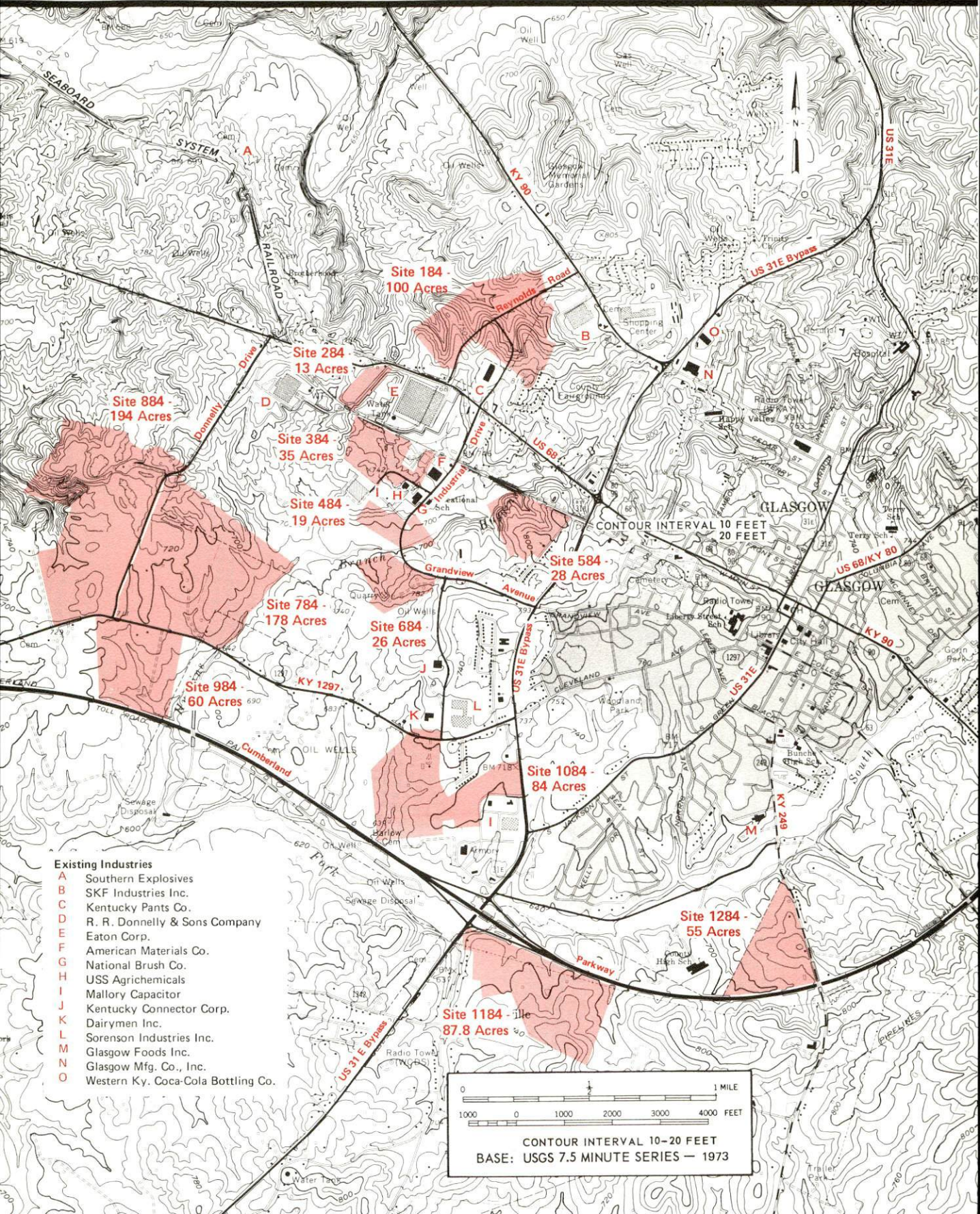
1984

A comprehensive
report on
Glasgow, Ky.



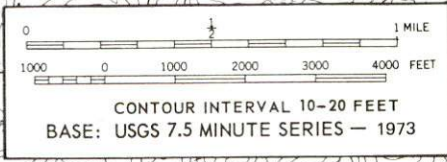
GLASGOW, KENTUCKY --- Index to Industrial Sites --- 1984

For detailed data on individual sites contact the Kentucky Department of Economic Development, Industrial Development & Marketing Division, Capital Plaza Tower, Frankfort, Kentucky 40601 (502-564-7140).



Existing Industries

- A Southern Explosives
- B SKF Industries Inc.
- C Kentucky Pants Co.
- D R. R. Donnelly & Sons Company
- E Eaton Corp.
- F American Materials Co.
- G National Brush Co.
- H USS Agrichemicals
- I Mallory Capacitor
- J Kentucky Connector Corp.
- K Dairymen Inc.
- L Sorenson Industries Inc.
- M Glasgow Foods Inc.
- N Glasgow Mfg. Co., Inc.
- O Western Ky. Coca-Cola Bottling Co.



A COMPREHENSIVE REPORT ON
GLASGOW, KENTUCKY

Prepared by
The Kentucky Department of Economic Development
Division of Research and Planning
in cooperation with
The Glasgow-Barren County Chamber of Commerce
and
Glasgow and Company, Inc.

1984

Program manager - Pamela Riley; research - Bill Morris; clerical - Shirley Wood; graphics - Frank Ferrante, Tony Cecconi, Robert Owens; cartography - Site Evaluation Branch, Division of Industrial Development. Cost of printing paid from state funds.

TABLE OF CONTENTS

<u>Chapter</u>	<u>Page</u>
INDUSTRIAL SITES	i
GLASGOW, KENTUCKY - A RESOURCE PROFILE	1
THE LABOR MARKET AREA	3
Population	3
Labor Force Characteristics of Residents, 1982	3
Selected Components of Nonagricultural Employment, by Place of Work, 1982	4
Major Glasgow Manufacturing Firms, Their Products and Employment	5
Labor Organizations in Manufacturing Firms	6
Industrial Services	7
Estimated Male Labor Supply	8
Estimated Female Labor Supply	9
Average Weekly Wages by Industry, by Place of Work, 1982	10
Per Capita Personal Income	12
TRANSPORTATION	13
Rail	13
Highways	13
Truck Service	14
Air	16
Taxi	17
Rental Services	17
Water	17
POWER AND FUEL	18
Electricity	18
Natural Gas	19
Other Fuels	19
WATER AND SEWERAGE	20
Public Water Supply	20
Raw Water	21
Sewerage	21
CLIMATE	23

<u>Chapter</u>	<u>Page</u>
LOCAL GOVERNMENT	24
City	24
County	24
Assessed Value of Property, 1983	24
Property Taxes	25
Combined State and Local Rates Per \$100 Valuation, 1983	26
Planning and Zoning	27
Safety	27
Police	27
Fire	27
Disaster and Emergency Service	27
Refuse Collection and Disposal	28
EDUCATION	29
Public Schools	29
Nonpublic Schools	29
Area Colleges and Universities	30
Vocational Schools	30
HEALTH	33
Local Medical Personnel	33
Hospitals	33
Other Medical Facilities	33
Ambulance Service	33
Public Health	33
OTHER LOCAL FACILITIES	34
Communications	34
Library Services	34
Religious Institutions	35
Financial Institutions	35
Hotels and Motels	36
Clubs and Organizations	36
RECREATION	37
COMMUNITY IMPROVEMENTS	40



1983 EDITION
GENERAL HIGHWAY MAP
BARREN COUNTY
KENTUCKY

PREPARED BY THE
KENTUCKY TRANSPORTATION CABINET
DEPARTMENT OF HIGHWAYS
DIVISION OF PROJECT DEVELOPMENT
IN COOPERATION WITH THE
U.S. DEPARTMENT OF TRANSPORTATION
FEDERAL HIGHWAY ADMINISTRATION

GLASGOW, KENTUCKY - A RESOURCE PROFILE

Glasgow, county seat of Barren County, is located in south-central Kentucky near Mammoth Cave National Park and Barren River Lake State Resort Park. Glasgow is 95 miles south of Louisville, Kentucky; 94 miles northeast of Nashville, Tennessee; and 196 miles southwest of Cincinnati, Ohio. The city had a 1980 population of 12,958.

Barren County covers a total land area of 482 square miles in the Mississippian Plateaus Region. The county had a 1980 population of 34,009.

The Economic Framework

The total number of Barren County residents employed in 1982 averaged 16,840, with nonagricultural jobs accounting for 14,580 workers. Manufacturing employers in the county reported 4,000 workers; wholesale and retail trade 2,470; service occupations 1,760; and 1,240 employees in state and local government. Manufacturing employment is greatest in printing and publishing, apparel and related products, machinery, and transportation equipment industries.

Per capita personal income in Barren County in 1981 was \$7,586. Between 1977 and 1981, per capita income increased by 48 percent.

The Glasgow labor market area includes Barren County and the adjoining Kentucky counties of Allen, Edmonson, Hart, Metcalfe, Monroe, and Warren. The total number of residents of the labor market area employed in 1982 averaged 73,110, with nonagricultural jobs accounting for 65,530 workers. Manufacturing employers in this area reported 15,470 workers; wholesale and retail trade 11,610; service occupations 7,650; and 7,300 in state and local government.

Resources for Growth

1. Labor Supply - There is a current labor supply of 10,690 men and 10,770 women available for industrial jobs in the labor market area. In addition, from 1984 through 1988, 6,410 young men and 6,280 young women will become 18 years of age and potentially available for industrial jobs.

2. Transportation - The Seaboard System Railroad provides freight service to Glasgow five days per week on a branch line. Glasgow is served by the Cumberland Parkway, an east-west toll road which connects to Interstate 65, 13 miles northwest of Glasgow. The city is also served by U. S. Highways 31-E and 68, and Kentucky Route 90- all "AAA"-rated highways. Of the 23 common carrier trucking companies serving Glasgow, two maintain terminal facilities in the city. The nearest scheduled commercial airline services are located at Standiford Field in Louisville, Kentucky, 90 miles north, and at Nashville Metropolitan Airport in Nashville, Tennessee, 100 miles southwest. Moore Field, two miles northwest of Glasgow, has one paved 4,000-foot runway.

3. Power and Fuel - The Glasgow Electric Plant Board, whose source of power is Tennessee Valley Authority, serves Glasgow, while Farmers Rural Electric Cooperative Corporation, whose source of power is East Kentucky Power Cooperative, serves most of Barren County. Western Kentucky Gas Company, whose source of supply is Texas Gas Resources Corporation, provides natural gas service to Glasgow. Two propane dealers and five fuel oil dealers are located in the city.

4. Education - The Barren County School District enrolled 3,224 students during the fall of 1983. The Glasgow Independent School System enrolled 2,330 students and is accredited by the Southern Association of Colleges and Schools. One nonpublic elementary school is located in Glasgow.

Seven institutions of higher learning are located within 85 miles of Glasgow, including two state universities, one senior college, two community colleges, and two junior colleges.

The Bowling Green State Vocational-Technical School in Bowling Green, 33 miles west, offers training in 29 course areas. The Barren County Area Vocational Education Center in Glasgow offers training in eleven course areas.

THE LABOR MARKET AREA

The Glasgow Labor Market Area includes Barren County and the adjoining Kentucky counties of Allen, Edmonson, Hart, Metcalfe, Monroe and Warren.

POPULATION

<u>Area</u>	<u>1980</u>	<u>1970</u>	<u>Percent Nonwhite</u>
Glasgow	12,958	11,301	8.2
Labor Market Area	167,166	141,709	N/A
Barren County	34,009	28,677	5.1
Allen County	14,128	12,598	1.3
Edmonson County	9,962	8,751	1.9
Hart County	15,402	13,980	8.1
Metcalfe County	9,484	8,177	3.0
Monroe County	12,353	11,642	3.0
Warren County	71,828	57,884	9.0

Note: The 1980 counts of population by race are provisional.

Sources: U. S. Department of Commerce, Bureau of the Census, 1980 Census of Population and Housing, March 1981; 1980 Census of Population, Number of Inhabitants. Population Research Unit, Urban Studies Center, University of Louisville, Kentucky Demographics: The 1980 Census of Kentucky, Characteristics of Population, Households, Housing, January 1982.

LABOR FORCE CHARACTERISTICS OF RESIDENTS, 1982

	<u>Barren County</u>	<u>Labor Market Area</u>
Civilian Labor Force	18,899	82,752
Employment	16,836	73,109
Agricultural	2,255	7,583
Nonagricultural	14,581	65,526
Unemployment	2,063	9,643
Rate of Unemployment (%)	10.9	11.7

Source: Kentucky Cabinet for Human Resources, Kentucky Labor Force Estimates, Annual Averages, 1982.

SELECTED COMPONENTS OF NONAGRICULTURAL EMPLOYMENT,
BY PLACE OF WORK, 1982

	<u>Barren County</u>	<u>Labor Market Area</u>
All Industries (total)	11,094	47,769
Manufacturing	3,999	15,467
Wholesale & Retail Trade	2,470	11,613
Services	1,759	7,652
State/Local Government	1,237	7,301
Contract Construction	480	1,818
Mining & Quarrying	71	222

Note: Excludes domestic workers, railway workers, certain nonprofit corporations, majority of federal government workers, and self-employed workers.

Source: Kentucky Cabinet for Human Resources, Average Monthly Workers Covered by Kentucky Unemployment Insurance Law, 1982.

MAJOR GLASGOW MANUFACTURING FIRMS,
THEIR PRODUCTS AND EMPLOYMENT*

<u>Firm (Establishment date)</u>	<u>Product</u>	<u>Employment</u>			<u>Labor Unions</u>
		<u>Total</u>	<u>Male</u>	<u>Female</u>	
Cave Lake Workshop (1973)	Wood pallets, cushions, wood stacks	35	20	15	
Dairymen, Inc. (1975)	Cheese, whey powder	69	63	6	Food and Commercial Workers**
Dickerson Lumber Company (1947)	Kiln-dried lumber, skids and pallets	61	60	1	
R.R. Donnelley & Sons Company, Glasgow Manufacturing Division (1970)	Printing	N/A			
Eaton Corporation, Axle Division, Glasgow Plant (1971)	Axles	525	-	-	
Glasgow Foods, Inc. (1969)	Poultry processing	150	93	57	
Glasgow Manufacturing Company, Inc. (1946)	Ladies' sportswear, ladies' suits, ladies' dresses	275	-	-	Ladies' Garment Workers**
Glasgow Daily Times (1865)	Newspaper, offset printing	49	21	28	
Kentucky Connector Corporation (1971)	Electrical connectors	45	35	10	
Kentucky Pants Company, Inc., # 1 (1960)	Men's work pants, jeans	145	-	-	

(Contd.)

<u>Firm (Establishment date)</u>	<u>Product</u>	<u>Employment</u>			<u>Labor Unions</u>
		<u>Total</u>	<u>Male</u>	<u>Female</u>	
Kentucky Pants Company, Inc., # 2 (1937)	Men's work pants, jeans	245	43	202	
Mallory Capacitor Company (1964)	Electrolytic capacitors, sonalerts	468	138	330	
National Brush Company Plant # 3 (1958)	Brush blocks, wood handles, shape wood parts	65	55	10	
SKF Tapered Bearings Division, SKF Industries, Inc. (1965)	Roller bear- ings, tapered	592	491	101	Steelworkers**
Southern Explosives Corporation (1967)	Blasting agents	56	54	2	
Western Kentucky Coca- Cola Bottling Company- Glasgow Branch (1923)	Carbonated beverages	43	38	5	

*Firms with 30 or more employees.

**See Labor Organizations below.

Sources: Kentucky Department of Economic Development, 1984 Kentucky Directory of Manufacturers; Division of Research and Planning. Glasgow-Barren County Chamber of Commerce.

LABOR ORGANIZATIONS IN MANUFACTURING FIRMS

<u>Union</u>	<u>Representing workers at:</u>
International Ladies' Garment Workers Union, AFL-CIO	Glasgow Manufacturing Company, Inc.
United Food and Commercial Workers International Union, AFL-CIO	Dairymen, Inc.
United Steelworkers of America, AFL-CIO	SKF Tapered Bearings Division, SKF Industries, Inc.

INDUSTRIAL SERVICES

<u>Types of Services</u>	<u>Location</u>	<u>Mileage from Glasgow</u>
Custom Plastics Producers	Bowling Green, Kentucky	33
Electric Motor Repair	Glasgow, Kentucky	-
Grinding, Precision & Tool	Nashville, Tennessee	94
	Louisville, Kentucky	95
Heat Treating Facilities	Nashville, Tennessee	94
	Louisville, Kentucky	95
Industrial Equipment & Supplies	Bowling Green, Kentucky	33
Industrial Gases	Bowling Green, Kentucky	33
Industrial Waste Removal	Elizabethtown, Kentucky	53
Machine Shops, Tool & Die	Horse Cave, Kentucky	16
Metal Finishers	Elizabethtown, Kentucky	53
Metal Service Centers	Bowling Green, Kentucky	33
Millwrights	Bowling Green, Kentucky	33

Sources: Kentucky Department of Economic Development, Kentucky Directory of Selected Industrial Services, 1983; Division of Research and Planning.

ESTIMATED MALE LABOR SUPPLY
GLASGOW LABOR MARKET AREA

Area	Current			Not in Labor Force	Future Becoming 18 years of age 1984 thru 1988
	Total	Unemployed	Under- employed		
Labor Market Area*	10,686	5,238	3,922	1,526	6,409
Barren	1,813	1,207	606	0	1,338
Allen	730	527	203	0	553
Edmonson	1,087	402	127	558	428
Hart	1,177	412	214	551	660
Metcalfe	433	286	147	0	410
Monroe	1,101	428	256	417	518
Warren	4,345	1,976	2,369	0	2,502

*Additional workers may be drawn from other nearby counties.

Note: Unemployed - persons unemployed and actively seeking work; Underemployed - persons employed but working only 14 to 26 weeks per year; Not in Labor Force - represents the number of persons who would enter the labor force if suitable employment were available (based on the assumption that persons in Kentucky would like to participate in the labor force in the same proportion that they do nationally).

Sources: Kentucky Cabinet for Human Resources, Kentucky Labor Supply Estimates by Area Development District and County, 1982. Kentucky Department of Economic Development, Future Labor Supply Becoming 18 Years of Age, 1984 thru 1988.

ESTIMATED FEMALE LABOR SUPPLY
GLASGOW LABOR MARKET AREA

Area	Current			Not in Labor Force	Future Becoming 18 years of age 1984 thru 1988
	Total	Unemployed	Under- employed		
Labor Market Area*	10,768	4,405	4,065	2,298	6,283
Barren	1,428	856	572	0	1,362
Allen	746	482	264	0	550
Edmonson	1,165	325	159	681	434
Hart	1,745	356	321	1,068	634
Metcalfe	538	243	93	202	416
Monroe	865	303	215	347	516
Warren	4,281	1,840	2,441	0	2,371

*Additional workers may be drawn from other nearby counties.

Note: Unemployed - persons unemployed and actively seeking work; Underemployed - persons employed but working only 14 to 26 weeks per year; Not in Labor Force - represents the number of persons who would enter the labor force if suitable employment were available (based on the assumption that persons in Kentucky would like to participate in the labor force in the same proportion that they do nationally).

Sources: Kentucky Cabinet for Human Resources, Kentucky Labor Supply Estimates by Area Development District and County, 1982. Kentucky Department of Economic Development, Future Labor Supply Becoming 18 Years of Age, 1984 thru 1988.

AVERAGE WEEKLY WAGES BY INDUSTRY,
BY PLACE OF WORK, 1982

	<u>Barren County</u>	<u>Allen County</u>	<u>Edmonson County</u>	<u>Hart County</u>
All Industries	\$251.43	\$229.52	\$190.32	\$214.12
Mining & Quarrying	301.27	132.68	*	184.09
Contract Construction	283.43	176.68	141.15	266.14
Manufacturing	308.75	257.09	*	247.56
Transportation, Communications & Public Utilities	297.87	318.42	185.30	221.08
Wholesale & Retail Trade	174.73	203.80	161.76	165.10
Finance, Insurance & Real Estate	260.54	246.94	203.52	224.12
Services	208.66	166.03	193.86	166.09
State/Local Government	241.41	213.18	208.98	246.72
Other	133.77	192.72	*	*

	<u>Metcalfe County</u>	<u>Monroe County</u>	<u>Warren County</u>
All Industries	\$174.74	\$185.32	\$275.27
Mining & Quarrying	*	*	281.66
Contract Construction	115.20	134.46	273.68
Manufacturing	146.67	176.78	354.06
Transportation, Communications & Public Utilities	315.90	366.00	340.57
Wholesale & Retail Trade	154.64	166.37	188.60
Finance, Insurance & Real Estate	191.72	282.43	269.24
Services	185.01	130.27	229.23
State/Local Government	222.10	215.59	317.59
Other	*	134.77	159.84

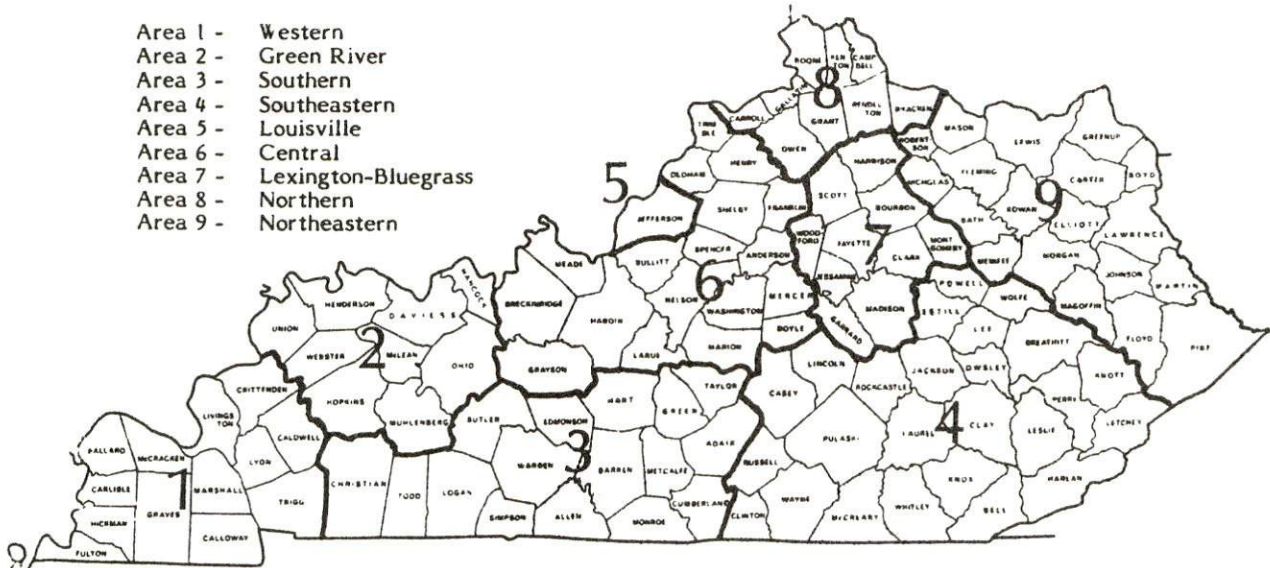
*Not disclosed.

Note: Excludes domestic workers, railway workers, certain nonprofit corporations, majority of federal government workers, and self-employed workers.

Source: Kentucky Cabinet for Human Resources, Average Weekly Wages of Workers Covered by Kentucky Unemployment Insurance Law, 1982.

Occupational wage rates for specific industries are usually not available to most government agencies, and wage data furnished to state employment agencies by individual industrial employers are protected from disclosure by federal law. The most reliable up-to-date wage information can be obtained by direct contact with local employers.

Associated Industries of Kentucky, a voluntary organization of Kentucky businesses, regularly collects occupational wage rates and fringe benefits data from participating member firms. Data are compiled for over 127 clearly defined office, production, and service occupations. Tabulations are published for nine geographical areas of Kentucky, as shown on the map below. It should be noted that the data may be weighted by the preponderance of firms in the larger cities and may be somewhat higher than the rates paid in the smaller communities. Data from these tabulations are available, upon request, from the Kentucky Department of Economic Development, Frankfort, Kentucky 40601.



Associated Industries of Kentucky Area Wage Surveys

Up-to-date occupational wage rates of the existing industries are maintained by South Kentucky Industrial Development Association, Post Office Box 726, Hopkinsville, Kentucky 42240.

PER CAPITA PERSONAL INCOME

<u>Area</u>	<u>1977</u>	<u>1981</u>	<u>Percent Change</u>
Barren County	\$5,115	\$7,586	48.3
Labor Market Area Range	\$3,345 - 5,483	\$5,002 - 8,141	N/A
Kentucky	5,797	8,416	45.2
U. S.	6,984	10,495	50.3

Source: U. S. Bureau of Economic Analysis, Kentucky Economic Information System, May 1983.

TRANSPORTATION

Rail

Line serving Glasgow - Seaboard System Railroad*

Services - Branch line with one local turn-around to Park City five days per week; switching facilities; team track space for 35 cars; piggyback facilities are located at Nashville, Tennessee, 94 miles southwest, and at Louisville, Kentucky, 95 miles north of Glasgow

For details on routing, schedules, rates, and services, contact:

Manager of Industrial Development
Seaboard System Railroad
P. O. Box 32290
Louisville, Kentucky 40232
(502) 587-5228

Highways

Glasgow is served by the Cumberland Parkway, an east-west, multi-lane toll road, which connects with Interstate 65, 13 miles northwest of Glasgow. Interstate 65 is a major north-south route which extends from the Chicago area to Mobile, Alabama. Highway access to Glasgow is also provided by U. S. Highways 31-E and 68, and Kentucky Route 90, all "AAA"-rated, 80,000-pound gross load limit trucking highways.

*The Seaboard System Railroad operates the privately-owned Glasgow Railroad.

Truck Service

Company

A & H Truck Line, Inc.*
American Freight System,
Inc. (T)*
Bowling Green Freight, Inc.*
Buske Lines, Inc.* (truck load
only)
Duff Truck Line, Inc.*
Expressway, Inc.*
F.M.S. Transportation* (truck
load only)
General Highway Express, Inc.*
Interstate System**
Majors Transit, Inc.*
Manning Motor Express, Inc. (T)*
The Maryland Transportation
Company**
The Mason and Dixon Lines, Inc.*
McLean Trucking Company**
Overnite Transportation
Company*
Renner's Express, Inc.*
Roadway Express, Inc.*
Robbins Truck Line, Inc.*
Russell Transfer, Inc.*
Smith's Transfer Corporation**
Thurston Motor Lines, Inc.*

Home Office

Evansville, Indiana 47711
9393 West 110th Street
Overland Park, Kansas 66210
Route 14, Box 65B
Northside Industrial Park
Bowling Green, Kentucky 42101
P. O. Box 349, 123 West Tyler Street
Litchfield, Illinois 62056
P. O. Box 359, Broadway and Vine Streets
Lima, Ohio 45802
Louisville, Kentucky 40210
P. O. Box 22628
St. Louis, Missouri 63147
Sidney, Ohio 45365
110 Ionia N. W.
Grand Rapids, Michigan 49503
P. O. Box 9
Caneyville, Kentucky 42721
Glasgow, Kentucky 42141
1111 Frankfurst Avenue
Baltimore, Maryland 21225
P. O. Box 969
Kingsport, Tennessee 37662
P. O. Box 213
Winston-Salem, North Carolina 27154
1000 Semmes Avenue, P. O. Box 1216
Richmond, Virginia 23209
1350 South West Street, P. O. Box 882
Indianapolis, Indiana 46206
1077 Gorge Boulevard
Akron, Ohio 44310
Hardinsburg, Kentucky 40143
5259 Aviation Drive N. W.
Roanoke, Virginia 24012
P. O. Box 1000
Staunton, Virginia 24401
600 Johnson Road
Charlotte, North Carolina 28206

(Contd.)

<u>Company</u>	<u>Home Office</u>
United Trucking Service, Inc.*	8505 West Warren Dearborn, Michigan 48126
Yellow Freight System, Inc.*	10990 Roe Avenue, P. O. Box 7270 Overland Park, Kansas 66207

(T)Local terminal.

*Interstate and intrastate service.

**Interstate service only.

Source: American Motor Carrier Directory, Fall 1983.

<u>Other Freight Services</u>	<u>Nearest Office or Shipping Center</u>
Emery	Louisville, Kentucky, 95 miles north Nashville, Tennessee, 94 miles southwest
Federal Express	Louisville, Kentucky, 95 miles north Nashville, Tennessee, 94 miles southwest
KATO Express, Inc. (air cargo service)	Elizabethtown, Kentucky, 53 miles north
Purolator Courier	Louisville, Kentucky, 95 miles north
United Parcel Service	Bowling Green, Kentucky, 33 miles west

HIGHWAY MILES AND TRUCK TRANSIT TIME IN DAYS FROM
GLASGOW, KENTUCKY, TO SELECTED MARKET CENTERS

City	Delivery		City	Delivery	
	Highway Miles	Time TL		Highway Miles	Time TL
Atlanta, Ga.	336	1	Los Angeles, Ca.	2,119	3
Baltimore, Md.	674	2	Louisville, Ky.	95	1
Birmingham, Ala.	290	1	Nashville, Tenn.	94	1
Chicago, Ill.	387	1	New Orleans, La.	611	2
Cincinnati, Ohio	196	1	New York, N. Y.	836	2
Cleveland, Ohio	440	1	Pittsburgh, Pa.	476	1
Detroit, Mich.	455	1	St. Louis, Mo.	311	1
Knoxville, Tenn.	207	1			

Note: Mileage computations are via the best interstate or primary highways, not necessarily the most direct route of travel.

Sources: Rand McNally Road Atlas, 1979. Official Kentucky Mileage Map, 1980. Delivery time - Manning Motor Express, Inc., P. O. Box 14503, Louisville, Kentucky 40214.

Air

Local

Moore Field*
Location: 2 miles northwest of Glasgow
Runways: 1 paved
Length: 4,000 feet, 600 feet of paved overrun
Traffic
Control: Wind sock
Lighting: Runway lights sundown to sunrise, REIL, VASI
Services: 100 LL, jet-A fuel; minor A & P repairs; charter,
flight instruction, hangar, auxiliary power unit;
taxi, rental cars available
Air Freight
Service: Chartered air freight service must be arranged

Nearest Scheduled Commercial Airline Service

Standiford Field
Location: 5 miles southeast of center of Louisville, Kentucky;
90 miles north of Glasgow
Runways: 3 paved
Length: 7,800 feet; 7,250 feet; 5,000 feet
Traffic
Control: Control tower
Lighting: Runways, obstructions, beacon and approach and touch-
down lights, center line on one runway
Services: Delta, Eastern, Ozark, Piedmont, TWA, United, USAir,
Wright Airways, Allegheny Commuter, Comair, Florida
Express; fuel - 100 and jet-A; tie downs; major
A & P repairs; major Avionics repairs; APU, charter,
oxygen, U. S. Customs; taxi, car rentals, limousine,
courtesy car, public transit; weather information;
restaurant, snack bar
Air Freight
Service: Air freight terminal

(Contd.)

*A new 10,000-square-foot apron was completed in 1983. Construction of T-hangars is planned.

Nashville Metropolitan Airport
Location: 6 miles southeast of Nashville, Tennessee;
100 miles southwest of Glasgow
Runways: 3 paved
Length: 8,000 feet; 7,700 feet; 4,320 feet
Traffic
Control: Tower
Lighting: Beacon, runway
Services: American, Delta, Eastern, Ozark, Piedmont, Republic,
TWA, USAir, Allegheny Commuter, Comair, Scheduled
Skyways, Sunbird, Tennessee Airways; fuel - 100LL,
jet-A; tie-downs, hangars; major A & P repairs,
major Avionics repairs; APU, charter, flight
instruction, oxygen, plane rental, survival
equipment, U. S. Customs; taxi, limousine, car
rental, courtesy car, public transit; weather
information; restaurant, snack bar
Air Freight
Service: Air freight terminal

Taxi - One company offers 24 hour service, seven days per week with
radio-equipped taxicabs.

Rental Services - Automobile, truck, and trailer rentals available

Water

The nearest navigable waterway is the Green River near Rochester, approximately 83 miles northwest, where a 9-foot navigation channel begins. The Ohio River is accessible 95 miles north of Glasgow at Louisville, where public port facilities are available. The Louisville-Jefferson County Riverport Authority has been designated as a foreign trade zone and offers complete U. S. Customs services for exports and imports. The Port of Louisville is also located on the Ohio River.

POWER AND FUEL

Electricity

Company serving Glasgow - Glasgow Electric Plant Board*
Source of power - Tennessee Valley Authority
Total generating capacity - 31,109,160 KW
For industrial rates contact:

South Kentucky Industrial Development
Association, Inc.
P. O. Box 726
Hopkinsville, Kentucky 42240
(502) 885-5392

Company serving major portion of Barren County - Farmers Rural
Electric Cooperative Corporation
Source of power - East Kentucky Power Cooperative
Total generating capacity - 1,304,000 KW**
For industrial rates contact:

Industrial Development Division
East Kentucky Power Cooperative
P. O. Box 707
Winchester, Kentucky 40391
(606) 744-4812

*A license has been granted to the Glasgow Electric Plant Board for a hydroelectric generating plant of 10 megawatts on the Barren River Reservoir.

**East Kentucky Power Cooperative's total generating capacity will be increased when a new 600,000 KW coal-fired generation plant is completed in southeast Clark County in 1992.

Natural Gas

Company serving Glasgow - Western Kentucky Gas Company
Source of supply - Texas Gas Resources Corporation
Size of transmission mains - 8-inch high pressure (supplier);
4-inch high pressure (distributor)
Distribution mains - 8, 6, 4, 3 and 2 inches
Distribution pressure - 18 to 50 psi
BTU content - 1,000 per cubic foot
Specific gravity - .60
For rates and supplies contact:

Director of Marketing
Western Kentucky Gas Company
311 West Seventh Street
Owensboro, Kentucky 42301
(502) 685-8000

Other Fuels

Propane

Buckeye Gas Products Company*
West Main Street
Glasgow, Kentucky 42141

Pargas of Glasgow, Inc.*
214 Industrial Drive
Glasgow, Kentucky 42141

Fuel oils

Distillate fuel oil -

Ashland Petroleum, Inc.*
921 West Main Street
Glasgow, Kentucky 42141

Leroy Williams Oil Company, Inc.*
P. O. Box 286, Route 2
Highway 31E South
Glasgow, Kentucky 42141

Benedict & Benedict, Inc.*
103 East College (office)
Glasgow, Kentucky 42141

Wyatts Oil Company*
1304 South Green Street
Glasgow, Kentucky 42141

Tri-County Oil Company, Inc.*
715 West Main Street
Glasgow, Kentucky 42141

Residual fuel oil - Arrangements must be made with the refinery.

Low sulphur content coal - Available in Kentucky.

*Bulk plant.

WATER AND SEWERAGE

Public Water Supply

Company serving Glasgow - Glasgow Water Company
118 East Washington Street
Glasgow, Kentucky 42141
(502) 651-6787

Sources - Beaver Creek and Barren River Reservoir
Treatment plant capacity - 8,500,000 gallons per day
Average daily consumption - 3,000,000 gallons
Peak daily consumption - 4,250,000 gallons
Type treatment - Flocculation, sedimentation, coagulation,
filtration, chlorination, and fluoridation
Storage capacity - 5,700,000 gallons including clear wells
Size lines - 2 through 20 inches
Average pressure - 60 psi
Average temperature - 65 degrees F.

MONTHLY WATER RATES

Industrial customers

Customers using over 1,000,000 gallons per month will be billed for all water used at \$.50 per M gallons inside the city limits and \$.70 per M gallons outside the city limits.

Residential and commercial customers

Inside city

First	2,000 gallons	\$5.00 Minimum Bill
Next	18,000 gallons	1.40 per M gallons
Next	80,000 gallons	.80 per M gallons
Next	900,000 gallons	.70 per M gallons
Over	1,000,000 gallons	.50 per M gallons

Outside city

First	2,000 gallons	\$7.50 Minimum Bill
Next	18,000 gallons	2.10 per M gallons
Next	80,000 gallons	1.20 per M gallons
Next	900,000 gallons	1.00 per M gallons
Over	1,000,000 gallons	.70 per M gallons

Sprinkler charge

\$0.02 per month per sprinkler head

(Contd.)

Fire Hydrant charge

\$2.00 per month per fire hydrant

Tap-on charge:

Inside city

\$ 100 for 5/8-, 3/4- and 1-inch meter service
300 for 1 1/2- and 2-inch meter service
1,000 for 4-inch meter service
2,000 for 6-inch meter service

Outside city

\$ 300 for 5/8-, 3/4- and 1-inch meter service
700 for 1 1/2- and 2-inch meter service
1,250 for 4-inch meter service
2,500 for 6-inch meter service

Raw Water

Surface water sources - Barren River, Barren River Lake, Beaver Creek
Average discharge - Barren River near Finney, Kentucky - 1,511 cfs
(31 years, USGS, unadjusted)
Expected ground water yield - 50 to 200 gpm from east-west belt
through central section; 5 to 50 gpm in northern section; 5
gpm or less through the southern section

Sewerage

Company serving Glasgow - Glasgow Water Company
118 East Washington Street
Glasgow, Kentucky 42141
(502) 651-6787

Design capacity - 4,000,000 gallons per day

Average daily flow - 2,000,000 gallons

Type of treatment - Tertiary

Treatment processes - Primary clarification, roughing trickling
filters, aeration, digestion, secondary clarification, upflow
filtration, chlorination

Treated effluent discharged into - South Fork of Beaver Creek

Size of sanitary mains - 6 through 24 inches

Monthly rates - Residential and commercial customers
(Based on water meter reading)

Inside City Limits

First	2,000 gallons	\$3.00 Minimum bill
Over	2,000 gallons	1.00 per M gallons

Outside City Limits

First	2,000 gallons	\$4.50 Minimum bill
Over	2,000 gallons	1.50 per M gallons

Sewer service surcharge:

There shall be a surcharge for high oxygen demand wastewater. It shall be based on the highest charges either for B.O.D. or C.O.D. with rates for each calculated as below:

B.O.D. surcharge - Shall be \$0.15 per M gallons per 100 mg per liter over 200 mg per liter up to 500 mg per liter. The surcharge on B.O.D. over 500 mg per liter shall be \$0.30 per M gallons per 100 mg per liter over 500 mg per liter.

C.O.D. surcharge - Shall be \$0.10 per M gallons per 100 mg per liter over 300 mg per liter up to 750 mg per liter. The surcharge on C.O.D. over 750 mg per liter shall be \$0.20 per M gallons per 100 mg per liter over 750 mg per liter.

There shall be a surcharge for high suspended solids levels.

Suspended solids surcharge - Shall be \$0.15 per M gallons per 100 mg per liter over 200 mg per liter.

CLIMATE

Barren County

Temperature

Normal (30-year record)	59.4 degrees
Average annual 1982	59.3 degrees
Record highest, July 1952 (43-year record)	107.0 degrees
Record lowest, January 1963 (43-year record)	-15.0 degrees
Normal heating degree days (30-year record) (Heating degree day totals are the sums of negative departures of average daily temperatures from 65 degrees F.)	3,696

Precipitation

Normal (30-year record)	46.00 inches
Mean annual snowfall (42-year record)	11.60 inches
Total precipitation 1982	49.43 inches
Mean number days precipitation (.01 inch or more) (41-year record)	119 inches
Mean number days thunderstorms (41-year record)	54

Prevailing Winds (22-year record)

South

Relative Humidity (17-year record)

Midnight	79 percent
6 a.m.	84 percent
Noon	58 percent
6 p.m.	61 percent

Source: U. S. Department of Commerce, Environmental Science
Services Administration, Climatological Data, 1982.
Station of record: Nashville, Tennessee.

LOCAL GOVERNMENT

City

Structure - Mayor - 4-year term; 12 council members - 2-year terms

Budget 1983-84 - General Fund \$2,303,482

Water and Sewer Fund \$1,617,000

Electric Fund \$8,743,646

Fees and licenses - Occupational license fees - one percent of wages of individuals and the net profits of businesses; regulatory business licenses range from \$10 to \$200 annually

County

Structure - County Judge/Executive - 4-year term;

7 magistrates - 4-year terms

Budget 1983-84 - General Fund \$975,500; Road Fund \$631,322

Assessed Value of Property, 1983*

<u>Classes of Property</u>	<u>Glasgow</u>	<u>Barren County</u>
Real Estate	\$144,921,668	\$379,686,343
Tangibles	43,611,963	85,889,356

*Excludes Homestead Exemptions.

Property Taxes

All property in Kentucky is assessed at 100 percent of fair cash value.

Land and buildings are taxed by the state and may be taxed by local jurisdictions. The state rate is \$0.221 per \$100 of assessed valuation.

Manufacturing machinery, raw materials inventories, pollution control equipment, and goods in the process of manufacture are not subject to local taxation. The state rate is \$0.15 per \$100.

Other tangible personal property owned by manufacturers (automobiles, trucks, finished goods, office furniture, office equipment) is taxed by the state at \$0.45 per \$100 and may be taxed by local jurisdictions.

Intangible personal property located in Kentucky (money in hand, shares of stock, notes, bonds, accounts receivable, and other credits) is taxed by the state at \$0.25 per \$100, and is not subject to local taxation.

Property stored in public warehouses in a transit status is not subject to local taxation. The state rate is only \$0.015 per \$100.

Private leaseholds in industrial facilities owned by cities or counties and financed by industrial revenue bonds are subject to a state tax of \$0.015 per \$100 of value (essentially the lessee's equity, adjusted for appreciation or depreciation). Local taxation is not permitted.

Combined State and Local Rates Per \$100 Valuation, 1983*
 (100% assessment)

Kentucky school districts levy property taxes on property located within individual school district boundaries. Two types of school districts are operated in Kentucky: 1) independent school districts which usually operate within a single city and often do not cover the entire city; and 2) common school districts which operate in portions of counties not covered by independent districts and cover the entire county when there is no independent district. School district boundaries are mutually exclusive and do not cross.

	<u>Site Inside Glasgow and the Glasgow School District</u>	<u>Site Inside Glasgow and the Barren County School District</u>	<u>Site Inside Unincorporated Barren County</u>
1. Land and buildings	\$1.1040	\$0.8050	\$0.5690
2. Mfg. machinery, raw materials, goods in process, pollution control equipment	0.1500	0.1500	0.1500
3. Finished goods, office equipment, vehicles, other tangibles	1.4039	1.0889	0.8529
4. Intangibles (accounts rec., notes, bonds, etc.)	0.2500	0.2500	0.2500
5. Property stored in public warehouses in a transit status	0.0150	0.0150	0.0150
6. Leaseholds in industrial revenue bond financed plants	0.0150	0.0150	0.0150

*Kentucky Department of Economic Development.

Planning and Zoning

Joint agency - Joint City-County Planning Commission*

Zoning enforced - Within the city of Glasgow

Subdivision regulations enforced - All areas

Local codes enforced - Building and housing for all buildings inside the city of Glasgow, and only multiple family dwellings in remainder of county

Mandatory state codes enforced - Kentucky Plumbing Code, National Electric Code, Kentucky Boiler Regulations and Standards, Kentucky Building Code (modeled after BOCA code)

Safety

Police

Glasgow

Barren County

Total staff

28

6

Radio-patrol cars

6

4

Fire

Insurance Services Office,
Public Protection
Classification

6

Cave City - 7
Haywood - 10
Hiseville - 10
Park City - 7
Temple Hill - 10

Full-time staff

31

-

Volunteers

-

**

Disaster and Emergency Service

Barren County Disaster and Emergency Service

*Includes Barren County and the cities of Glasgow, Hiseville, Cave City, and Park City.

**Fire protection is provided to Barren County residents by five volunteer fire departments dispatched through a central communications system.

Refuse Collection and Disposal

Glasgow

Type service	Municipal and private
Fee charged:	
residential	\$4.00 per month; \$1.00 per month for senior citizens
business	By contract
industrial	By contract (private)
Collection frequency:	
residential	Weekly
business	Weekly
industrial	By contract (private)
Trash pickup	None
Disposal method	Sanitary landfill

Private refuse collection firms provide service to some areas of the county. The landfill is available to manufacturing firms at a charge of \$10 per ton for customers inside the city and \$15 per ton for customers outside the city.

EDUCATION

Public Schools

	<u>Glasgow Independent</u>	<u>Barren County</u>
Total Enrollment (Fall 1983)	2,330	3,224
Elementary	1,337	2,224
Middle School	373	-
High School	620	1,000
Student-Teacher Ratio	18-1	19-1
Elementary	19-1	18-1
Middle School	17-1	-
High School	18-1	20-1
Accreditation	Southern Association of Colleges and Schools	-
Percent High School Graduates to College (1982)	43.4	24.5
Expenditures Per Pupil (1982-83)	\$1,573.44	\$1,475.30
Bonded Indebtedness (June 30, 1983)	\$650,000	\$2,585,000

Nonpublic Schools

	<u>Glasgow Montessori, Inc.</u>
Total Enrollment	10
Elementary	10
Student-Teacher Ratio	5-1
Elementary	5-1

Area Colleges and Universities

<u>Name</u>	<u>Location (Miles distant)</u>	<u>Enrollment (Fall, 1983)</u>	<u>Highest Degree Conferred</u>
Western Kentucky University	Bowling Green, Kentucky (33)	12,666	Masters, Specialist*
Lindsey Wilson College	Columbia, Kentucky (37)	465	Associate
Elizabethtown Community College	Elizabethtown, Kentucky (53)	2,259	Associate
Campbellsville College	Campbellsville, Kentucky (56)	701	Baccalaureate
Somerset Community College	Somerset, Kentucky (77)	1,079	Associate
Tennessee Technological University	Cookeville, Tennessee (80)	7,847	Academic and Professional
St. Catharine College	Springfield, Kentucky (84)	201	Associate

Additional institutions of higher education are located in Nashville, Tennessee, 94 miles southwest, and in Louisville, Kentucky, 95 miles north of Glasgow.

Vocational Schools

Both the state vocational-technical schools and the area vocational education centers are operated by the Kentucky Department of Education. The state vocational-technical schools enroll persons full time who are at least 16 years of age and not in school. These students attend classes for six hours each day. The area vocational education centers are designed to accommodate high school students who are at least 15 years of age. These students attend vocational school for three hours each day. The state vocational-technical schools and the area education centers offer evening courses to enable working adults to upgrade current job skills.

(Contd.)

*Joint doctoral degree programs are offered in cooperation with the University of Kentucky, Lexington, and cooperative doctoral degree programs are offered with the University of Louisville. The degrees are issued by the University of Kentucky or the University of Louisville.

Nearest State School

Location	Bowling Green State Vocational-Technical School
Miles Distant	Bowling Green
Curriculum	33
	Business and Office
	Accounting/Jr. Management
	Clerical
	Secretarial
	Consumer and Home Economics
	Commercial Foods
	Health and Personal Services Occupations
	Dental Assistant
	Health Careers
	Nurse Assistant
	Practical Nurse*
	Radiological Technology
	Respiratory Therapy
	Surgical Technician
	Industrial Education
	Auto Body Repair
	Auto Mechanics
	Carpentry
	Civil Highway Technology
	Diesel Mechanics
	Electricity
	Electronics Servicing Occupations
	Electronics Technology
	Graphic Arts (Printing)
	Industrial Maintenance
	Machine Shop
	Masonry
	Plumbing
	Refrigeration and Air Conditioning
	Small Engine Repair
	Technical Drafting
	Tool and Die Making
	Welding

*This course is taught at the T. J. Samson Community Hospital in Glasgow.

Nearest Area Education Center

Location	Barren County Area Vocational Education Center
Curriculum	Glasgow Business and Office Secretarial Clerical Junior Management Health and Personal Services Occupations Industrial Education Air Conditioning and Refrigeration Auto Mechanics Building Trades Drafting Electricity (industrial and residential) Machine Shop Welding

Arrangements can be made to provide training in the specific production skills required by an industrial plant. Instruction may be conducted either in the vocational school or in the industrial plant, depending upon the desired arrangement and the availability of special equipment.

HEALTH

Local Medical Personnel

Physicians - 39
Dentists - 11

Hospitals

<u>General Hospital</u>	<u>Location</u>	<u>Beds</u>
T. J. Samson Community Hospital	Glasgow	218

General hospital facilities - 4 operating rooms, intensive recovery room, 9 emergency rooms, 10 ICU and CCU beds, 8 step-down beds, level II neonatal intensive care nursery, 6 diagnostic radiological rooms with image intensifiers and automatic film processor, ultrasound, nuclear medicine, inhalation therapy, physical therapy, EKG laboratory, and clinical and anatomical laboratory services on the premises

Medical staff - 39 doctors, 65 registered nurses, 138 licensed practical nurses, orthopedic and numerous supporting staff members

Other Medical Facilities

Name - Barren County Comprehensive Care Center of Barren River Mental Health-Mental Retardation Board, Inc.
Staff - Senior therapist, supervisor, consulting psychiatrist (part time), psychologist, associate personnel
Services - Outpatient services, hospital referral, transitional care, alcohol program, consultation, job training, and workshop

Ambulance Service

Name - Barren-Metcalfe County Ambulance Service (based in Glasgow)
Staff - 18 attendants, 4 radio operators, 1 supervisor, 1 secretary
Service - County-wide in Barren and Metcalfe Counties, 24 hours per day, 7 days per week
Equipment - 4 type I and 1 type II ambulances (comply with all federal and state requirements), variety of rescue equipment, and radio communication with all hospitals and public safety agencies within region

Public Health

Facility - Barren County Health Center of Barren River Regional Health Department
Staff - 2 registered nurses, 1 licensed practical nurse, 1 health environmentalist, 2 clerks

OTHER LOCAL FACILITIES

Communications

Telephone - General Telephone Company serves Glasgow
Continental Telephone Company and South Central
Rural Telephone Company serve Barren County
Services - Standard

Telegraph - Western Union Telegraph Company
Services - Toll-free number, 1-800-325-5100; counter
service available

Postal - U. S. Post Office
Class - First
Mail received - Once daily
Mail dispatched - Once daily

Newspapers -
Daily and circulation - Glasgow Daily Times - 7,300
Weekly and circulation - Barren County Progress - 5,800
The Glasgow Republican - 1,500

Other papers
received from - Bowling Green and Louisville, Kentucky;
Nashville, Tennessee

Radio - WKAY-AM, WGGC-FM, WCDS-AM, WOVO-FM
Stations received from - Cave City and Louisville, Kentucky;
Nashville, Tennessee

Television -
Cable service
Reception from - Bowling Green and Louisville, Kentucky;
Nashville, Tennessee
Kentucky Educational
Television - Bowling Green transmitter, Channel 53

Library Services

Public library - The Mary Wood Weldon Memorial Library
Size collection - 48,287 volumes
Circulation, 1982-83 - 116,743
Services - Bookmobile; reading programs; story hour; Interlibrary
Loan; Kentucky collection with census records, tax records, family
trees, etc.; circulated magazines; microfilm and reader-printer;
films and filmstrips; framed paintings; 2 community rooms;
Western Kentucky University classes; recreational games; service
to schools, shut-ins, and deposit stations

Religious Institutions

Denominations -	Assembly of God Baptist Catholic Christian Church of Christ Church of God Church of Jesus Christ of Latter Day Saints Cumberland Presbyterian Episcopal	Evangelic Tabernacle Jehovah's Witnesses Lutheran Methodist Nazarene Nondenominational Pentecostal Presbyterian Seventh Day Adventist
-----------------	--	---

Nearest Synagogues - Nashville, Tennessee, 94 miles southwest
 Louisville, Kentucky, 95 miles north

Congregations -	<u>Nashville</u>	<u>Louisville</u>
	Sherith Israel (orthodox) Ohabai Shalom (reform) West End Synagogue (conservative)	Adath Israel Brith Sholom (reform) Adath Jeshurum (conservative) Anshei Sfard (orthodox) Keneseth Israel (orthodox) Sholom (reform)

Financial Institutions

<u>Banks</u>	<u>Assets</u>	<u>Deposits</u>	<u>Statement Date</u>
Citizens Bank & Trust Company	\$ 93,645,000.00	\$86,413,000.00	6/30/83
New Farmers National Bank	100,482,758.00	89,797,625.00	6/30/83
<u>Savings and Loan Associations</u>	<u>Assets</u>	<u>Savings Accounts</u>	<u>Statement Date</u>
Cardinal Federal Savings and Loan Association*	\$195,785,457.20	\$188,711,567.66	12/31/83
Future Federal Savings and Loan Association**	\$565,271,356.71	\$481,090,315.16	12/31/83

*Includes total assets and savings accounts for offices in Owensboro, Calhoun, Glasgow and Hawesville.

**Includes total assets and savings accounts for offices in Louisville, Crestwood, Elizabethtown, Glasgow, Tompkinsville and Versailles.

Hotels and Motels

Total number - 3
Total rooms - 131

Clubs and Organizations

Altrusa Club	Parent-Teachers Association (PTA)
American Legion	Rotary Club
Aquatic Club	South Central Kentucky Genealogical and Historical Society
Barren County Band Boosters	Southern Kentucky Association for Handicapped Citizens
Barren County Democratic Ladies Club	T.J. Samson Community Hospital Auxiliary
Barren County Education Association	Travelers Protective Association
Barren County Farm Bureau	Veterans of Foreign Wars (VFW)
Barren County Federation of Republican Women	
Barren County Gospel Singing Association	
Barren County Homemakers	
Barren County Medical Auxiliary	
Barren County Young Democrats	
Barren River Rod and Gun Club	
Kay Bledsoe Business and Professional Women's Club	
Daughters of the American Revolution (DAR)	
Disabled American Veterans 5-Watt Club	
Foster Parents	
Glasgow Band Boosters	
Glasgow-Barren County Bar Association	
Glasgow-Barren County Chamber of Commerce	
Glasgow-Barren County Jaycees	
Glasgow-Barren County Jaycettes	
Glasgow Business and Professional Women's Club	
Glasgow Education Associaton	
Glasgow Garden Club	
Glasgow Women's Club	
Kiwanis Club	
Ladies Matinee Musicale	
Lions Club	
Little League	
Ministerial Association	
Newcomers Club	
Optimist Club	

RECREATION

Local

The Glasgow Recreation Board provides opportunities for Glasgow citizens of all ages to participate in numerous types of recreational activities. Among the many organized programs administered by the board are adult and youth softball leagues and tournaments, tennis programs, basketball leagues, Little League baseball/basketball/football, distance running, day camps for children, dance classes, gymnastics, ceramics classes, exercise classes, volleyball, youth soccer, cheerleading instruction, a Christian Youth Club, and an outstanding senior citizens program.

Annual tournaments popular in Glasgow include the W. A. Weldon Invitational Tennis Tournament—one of the South's oldest privately endowed tennis events, and the Glasgow Classic Junior Tennis Tournament, which includes junior tournament players, male and female, as well a division of adult men, age 35 and older.

Glasgow operates four parks - American Legion Park, Gorin Park, Twyman Park and Weldon Park. These offer beautiful wooded areas for camping and picnicking, in addition to space for rigorous sports.

The American Legion Park, completed in 1975, features a lighted softball field with dugouts and aluminum bleachers seating up to 1,000 persons, a picnic shelter, a concession stand, a croquet court, a horseshoe-pitching area, and restroom facilities. Two playgrounds are also available.

Weldon Park serves as the city's primary location for youth and adult softball league play. Features include a lighted softball field, dugouts, bleachers, a concession stand, a picnic shelter, a playground and a large parking area. Plans are being made for the construction of an amphitheater and an obstacle course.

Twyman Park hosts a variety of organized games with the assistance of a part-time summer supervisor. The park has two paved outdoor basketball courts, a baseball/softball field, a picnic shelter, and a playground area with restrooms.

Gorin Park, Glasgow's oldest, was established in 1950 and now offers complete facilities for a wide variety of sports. Picnic areas and playground equipment are available, as are basketball and volleyball courts.

Glasgow's municipal swimming pool—a Junior Olympic-size pool—is open from Memorial Day through Labor Day each year. A wading pool and a baby pool are also available at this facility. The pool is home to the Glasgow Aquatic Club, a group offering programs to promote physical fitness and competition for the young people of Glasgow.

Indoor recreational facilities include the Lera B. Mitchell Clubhouse and the Glasgow Recreation Center. The Glasgow Senior Citizens meet daily at the Lera B. Mitchell Clubhouse, where a comprehensive program for this segment of the community is offered. Leisure time activities such as card playing, crafts, and billiards round out the program offerings which include free legal aid, blood pressure checks, a senior citizens lunch program, and aerobics classes. The clubhouse is also used for various public functions.

The three-story Glasgow Recreation Center houses the Glasgow Recreation Department offices, and scouts, civic groups, church groups, and many other local organizations hold activities at the center.

Local private recreational facilities include a country club, four golf courses, two swimming pools, a bowling facility, a three-unit indoor theater, a drive-in theater, and a skating center.

The Barren County Fair, held each year during June, offers a week of shows and activities which include horseshows, livestock exhibits, truck and tractor pulls, midway attractions, a stock car race, beauty pageants, and floor hall exhibits.

Area (Within 50 miles)

Barren River Lake State Resort Park, 14 miles southwest of Glasgow in Barren County, is a full-facility resort park offering a 51-room resort lodge, a coffee shop, 12 cottages, a lodge pool, a beach, riding stables, nature trails, open and covered boat slips, a 9-hole golf course, lighted handball and tennis courts, shuffleboard, park camping with a service building, a restaurant, fishing and pleasure boat rentals, picnic areas, and a playground. Barren River Lake, which covers 10,000 acres, is a popular area for skiing, sailing, fishing, and swimming.

Mammoth Cave National Park is located 13 miles northwest of Glasgow near Cave City. Beneath 52,000 park acres, Mammoth Cave is among the major tourist attractions of all times. It is the largest cave network ever discovered, with at least 230 miles of caverns. Some famous sights are Snowball Dining Room (267 feet below surface), Frozen Niagara, Crystal Lake, and Bottomless Pit. The park also features scenic boat trips on the Green River and nature and hiking trails. Park accommodations include a hotel with distinctive gift shops featuring native Kentucky and Southern Highland handicrafts, a motor lodge, hotel cottages, woodland cottages, and a hotel annex with budget accommodations and craft shop featuring live exhibits of broom making and weaving. Other park facilities include the hotel dining room and coffee shop, a service center, group meeting facilities, a campground, a picnic area, and tennis and shuffleboard courts.

Old Mulkey Meeting House State Shrine, 30 miles southeast of Glasgow near Tompkinsville, offers picnic areas and playgrounds. The house was built in 1804, and is the oldest log meeting house in the state. Daniel Boone's sister is buried in the graveyard and authentic records written in pokeberry ink are on display.

Bowling Green is located 33 miles west of Glasgow. Bowling Green serves the area as a recreational and educational center. Western Kentucky University provides the city with many exciting sporting events. Beech Bend Amusement Park has many rides, games and other forms of entertainment.

Nolin River Lake, 40 miles northwest of Glasgow, is just north of Mammoth Cave National Park. The lake has a surface area of 5,800 acres and offers facilities for camping, boating, and fishing.

Abraham Lincoln Birthplace National Historic Site, located 41 miles north of Glasgow near Hodgenville, features the log cabin which was the birthplace of Abraham Lincoln, enclosed within a granite memorial shrine. The grounds include 116 acres of the original Thomas Lincoln farm and a visitors' center with audiovisual programs and exhibits on the Lincoln family.

South Union, 47 miles west of Glasgow near Auburn, is the site of the last Shaker community in Kentucky, dating from 1807 until 1922. The grounds include a 40-room Shaker structure, now a museum containing exhibits of shaker furniture, tools, textiles, and crafts. The annual Shaker Festival at South Union is a ten-day event held each July and features arts, crafts, food, and an outdoor drama giving the history of South Union.

Dale Hollow Lake State Park, 48 miles southeast of Glasgow, is located alongside 48 square miles of surface water in southeastern Cumberland County. Park facilities include a marina, a picnic area, and 144 sites for tent and trailer camping. Dale Hollow Lake straddles the Kentucky-Tennessee state line. Several private recreation facilities are located near the lake.

COMMUNITY IMPROVEMENTS

Recent

The city of Glasgow annexed approximately 300 acres of land on the northwest side of the city in 1983. The new acquisition has been zoned for business use.

A 10,000-square-foot apron expansion was completed in 1983 at Glasgow's Moore Field airport.

A connector road has been opened in Glasgow between U. S. Highway 31E and Roseville Road (Kentucky Route 249). The project was completed in October of 1983.

A new \$900,000 parking structure has been completed by the city of Glasgow.

Recent improvements to the Glasgow Independent School System include the installation of a high school computer lab, and the institution of a gifted-talented program and an adult education program. In addition, all city schools recently have been air conditioned.

A \$1,000,000 medical arts building opened in Glasgow in early 1984.

Planned

The Glasgow Electric Plant Board has been granted a license to construct a hydroelectric generating plant on the Barren River Reservoir. The production capacity of the plant is to be 10 megawatts.

Construction of T-hangars at the Moore Field airport is planned.

Planned improvements for the curriculum of the Barren County School System include the development of a work-study program for high school special education students, and institution of a gifted-talented program.

Construction of an obstacle course and an amphitheater at Glasgow's Weldon Park is planned.



Department of Economic Development
1000 Bankers Building
P.O. Box 1000, Harrisburg, PA 17103-1000