

1984

Industrial Resources: Hardin County - Radcliff

Kentucky Library Research Collections
Western Kentucky University, spcol@wku.edu

Follow this and additional works at: https://digitalcommons.wku.edu/hardin_cty



Part of the [Business Administration, Management, and Operations Commons](#), [Growth and Development Commons](#), and the [Infrastructure Commons](#)

Recommended Citation

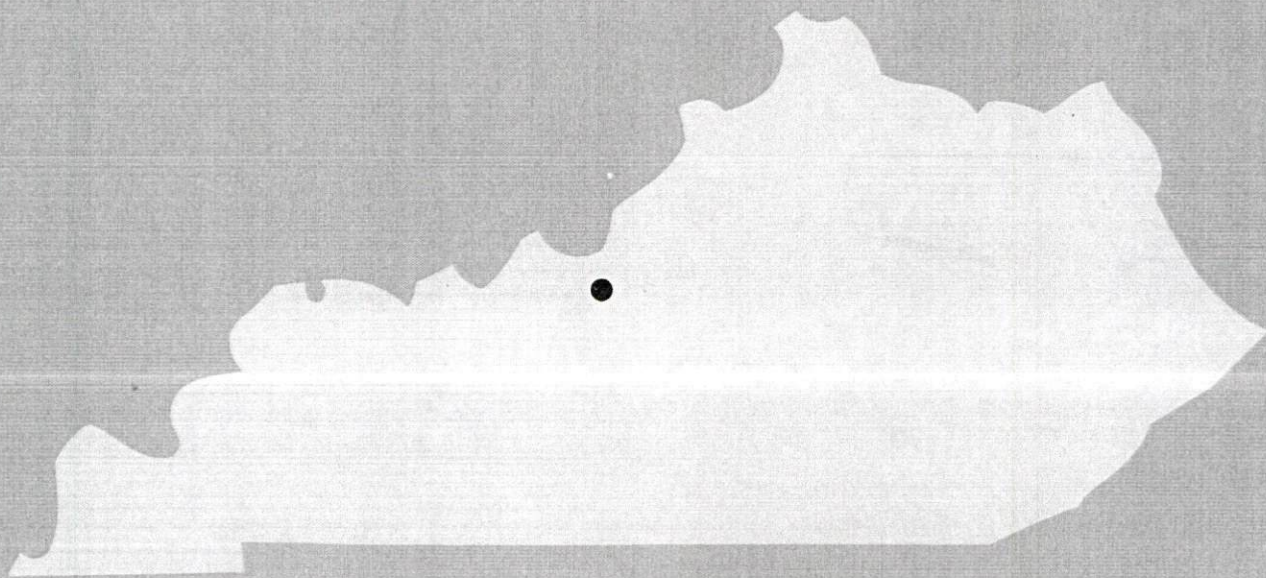
Kentucky Library Research Collections, "Industrial Resources: Hardin County - Radcliff" (1984). *Hardin County*. Paper 31.
https://digitalcommons.wku.edu/hardin_cty/31

This Report is brought to you for free and open access by TopSCHOLAR®. It has been accepted for inclusion in Hardin County by an authorized administrator of TopSCHOLAR®. For more information, please contact topscholar@wku.edu.

IR
367

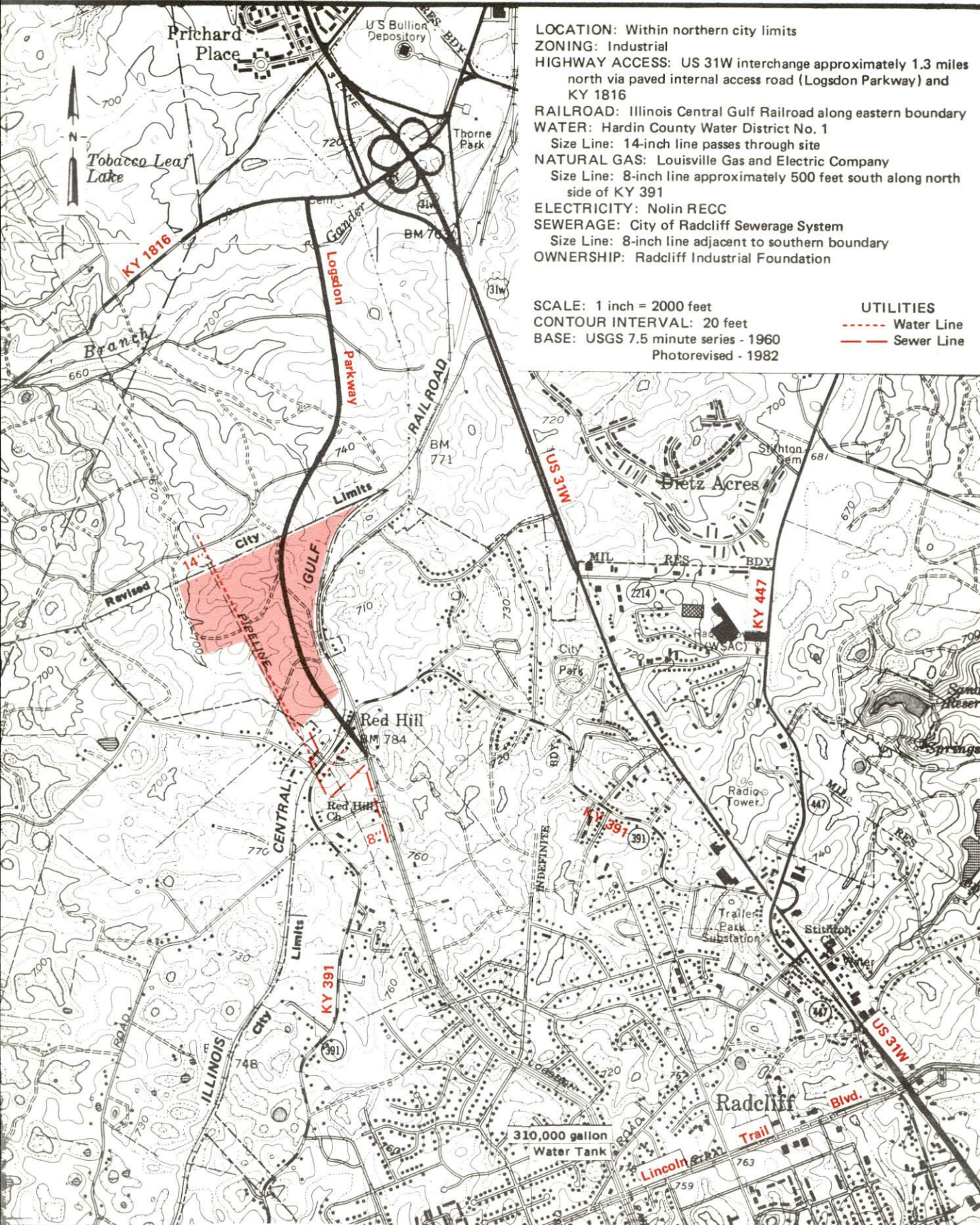
Hardin County

1984
**A comprehensive
report on
Radcliff, Ky.**



RADCLIFF, KENTUCKY --- Site 184 --- 86 Acres

For detailed data on individual sites contact the Kentucky Department of Economic Development, Industrial Development & Marketing Division, Capital Plaza Tower, Frankfort, Kentucky 40601 (502-564-7140).



A COMPREHENSIVE REPORT ON
RADCLIFF, KENTUCKY

Prepared by
The Kentucky Department of Economic Development
Division of Research and Planning
in cooperation with
The Radcliff-North Hardin Chamber of Commerce

1984

Program manager - Pamela Riley; research - Andrew Dennis; clerical - Bobbi Medley; graphics - Frank Ferrante, Tony Cecconi, Robert Owens; cartography - Site Evaluation Branch, Division of Industrial Development. Cost of printing paid from state funds.

TABLE OF CONTENTS

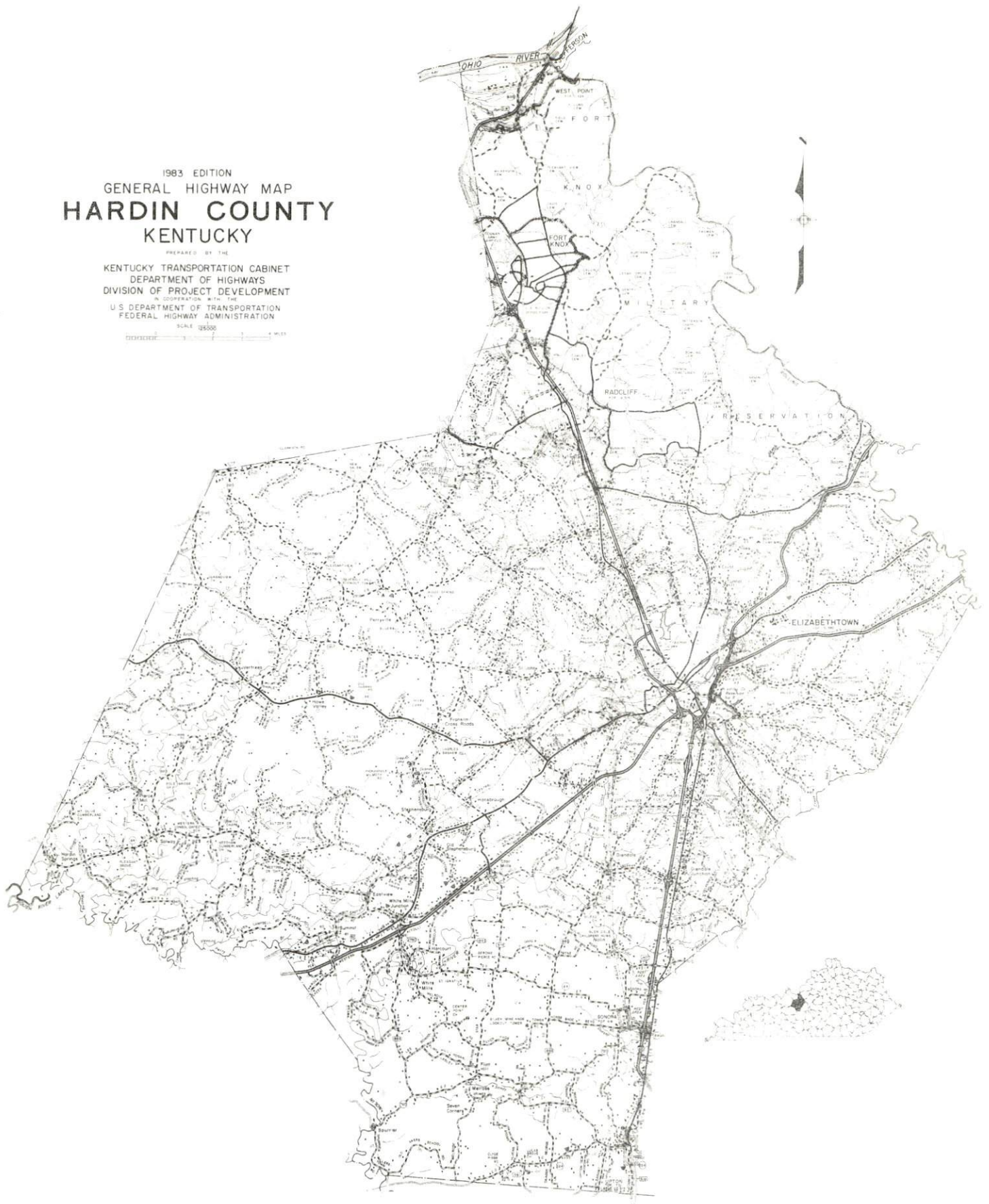
<u>Chapter</u>	<u>Page</u>
INDUSTRIAL SITES	i
RADCLIFF, KENTUCKY - A RESOURCE PROFILE	1
THE LABOR MARKET AREA	3
Population	3
Labor Force Characteristics of Residents, 1982	3
Selected Components of Nonagricultural Employment, by Place of Work, 1982	4
Radcliff Manufacturing Firms, Their Products and Employment	4
Labor Organizations in Manufacturing Firms	5
Industrial Services	5
Estimated Male Labor Supply	6
Estimated Female Labor Supply	7
Average Weekly Wages By Industry, by Place of Work, 1982	8
Per Capita Personal Income	10
TRANSPORTATION	11
Rail	11
Highways	11
Truck Service	12
Air	13
Bus	14
Taxi	14
Rental Services	14
Water	14
POWER AND FUEL	15
Electricity	15
Natural Gas	16
Other Fuels	16
WATER AND SEWERAGE	17
Public Water Supply	17
Raw Water	19
Sewerage	20
CLIMATE	21

<u>Chapter</u>	<u>Page</u>
LOCAL GOVERNMENT	22
City	22
County	22
Assessed Value of Property, 1983	22
Property Taxes	22
Combined State and Local Rates Per \$100 Valuation, 1983	23
Utilities Gross Receipts Tax for Schools	23
Planning and Zoning	23
Safety	24
Police	24
Fire	24
Rescue Service	24
Refuse Collection and Disposal	24
EDUCATION	25
Public Schools	25
Nonpublic Schools	26
Area Colleges and Universities	27
Vocational Schools	28
HEALTH	29
Local Medical Personnel	29
Hospitals	29
Other Medical Facilities	29
Ambulance Service	29
Public Health	29
OTHER LOCAL FACILITIES	30
Communications	30
Library Services	31
Religious Institutions	31
Financial Institutions	32
Hotels and Motels	32
Clubs and Organizations	33
RECREATION	34
COMMUNITY IMPROVEMENTS	37

1983 EDITION
GENERAL HIGHWAY MAP
HARDIN COUNTY
KENTUCKY

PREPARED BY THE
KENTUCKY TRANSPORTATION CABINET
DEPARTMENT OF HIGHWAYS
DIVISION OF PROJECT DEVELOPMENT
IN COOPERATION WITH THE
U.S. DEPARTMENT OF TRANSPORTATION
FEDERAL HIGHWAY ADMINISTRATION

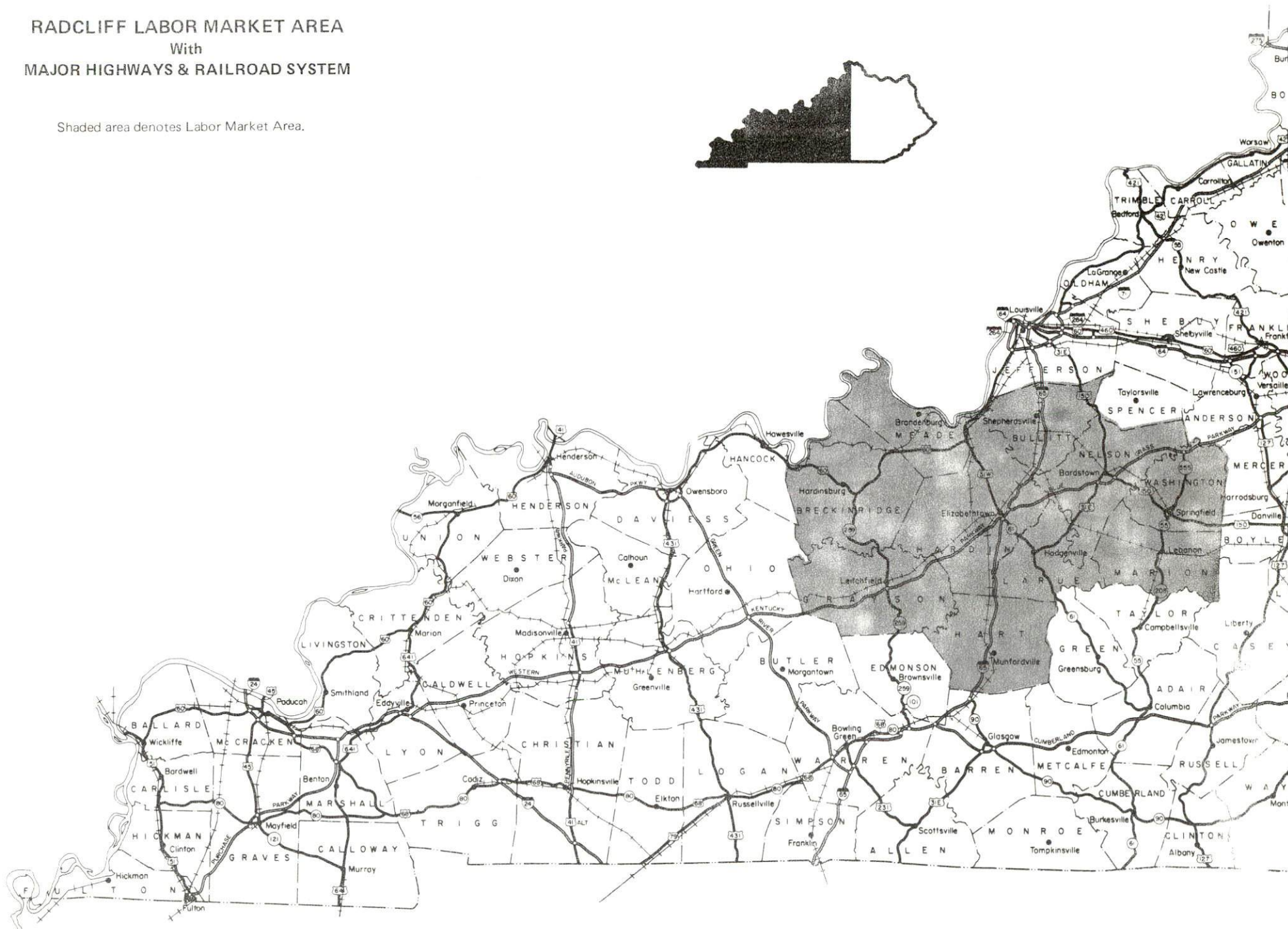
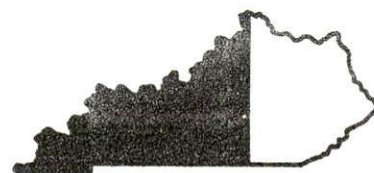
SCALE 1:250,000
CHILDESBERRY



RADCLIFF LABOR MARKET AREA

With
MAJOR HIGHWAYS & RAILROAD SYSTEM

Shaded area denotes Labor Market Area.



RADCLIFF, KENTUCKY - A RESOURCE PROFILE

Radcliff, situated in northern Hardin County, had a 1980 population of 14,519. Radcliff is located just 35 miles south of Louisville, Kentucky; 136 miles southwest of Cincinnati, Ohio; 142 miles north of Nashville, Tennessee; and 298 miles southeast of St. Louis, Missouri.

Hardin County, located in north-central Kentucky, covers a land area of 629 square miles divided between two of Kentucky's distinctive land regions. The majority of Hardin County is situated in the Mississippian Plateaus Region, a gently rolling plain noted for its agricultural production. The extreme eastern section of the county lies within the hilly Knobs Region. Hardin County had a population of 88,917 in 1980.

The Economic Framework

The total number of Hardin County residents employed in 1982 averaged 24,930 with 24,080 persons employed in nonagricultural jobs. Manufacturing employers in the county reported 3,840 workers; wholesale and retail trade 5,160; service firms 2,580; and state and local government 2,190. Manufacturing employment is greatest in Radcliff in the printing and publishing industry.

Per capita personal income in Hardin County in 1981 was \$7,234. Between 1977 and 1981 per capita income in the county increased by 34 percent.

The Radcliff labor market area includes Hardin County plus nine adjoining or nearby counties. The total number of residents employed in the labor market area in 1982 averaged 97,650 with 89,790 persons employed in nonagricultural jobs. Manufacturing employers in the area reported 12,020 workers; wholesale and retail trade 11,510; state and local government 7,400; and 5,955 workers in service firms.

Resources for Growth

1. Labor Supply - There is a current estimated labor supply of 17,560 men and 17,530 women available for industrial jobs in the labor market area. In addition, from 1984 through 1988, 12,360 young men and 11,810 young women in the area will become 18 years of age and potentially available for industrial jobs.

2. Transportation - Radcliff is located on a main line of the Illinois Central Gulf Railroad. Radcliff is served directly by U.S. Highway 31W, a "AAA" rated (80,000-pound gross load limit) trucking highway. U.S. 31W provides access to five major highways. Access to Interstate 64, the Western Kentucky Parkway and the Blue Grass Parkway is 13 miles south of Radcliff near Elizabethtown. Access to Interstates 64 and 71 is 36 miles north of Radcliff in Louisville. Twenty common carriers have authority to serve Radcliff. The nearest scheduled commercial airline service is at Standiford Field, 34 miles north of Radcliff, in Louisville. The Elizabethtown Airport, 15 miles south of Radcliff has a 5,000-foot paved runway and offers charter service.

3. Power and Fuel - Electric power is provided to Radcliff and Hardin County by Kentucky Utilities Company, an electric generation and transmission company, and by Nolin RECC, which is supplied by East Kentucky Power Cooperative. Northern Hardin County is served by Louisville Gas and Electric Company. Natural gas service is provided by the Louisville Gas and Electric Company, which is supplied by the Texas Gas Resources Corporation. There are four distributors of propane and six distributors of distillate fuel oil in Hardin County within 11 miles of Radcliff.

4. Education - The Hardin County School System serves Radcliff students and is accredited by the Southern Association of Colleges and Schools.

There are eight colleges and universities within 55 miles of Radcliff plus six universities operate extension campuses at Fort Knox Military Reservation which is located adjacent to the city of Radcliff.

The Elizabethtown State Vocational-Technical School, 11 miles south of Radcliff, provides occupational training in thirteen courses and plans to add nine more courses in April of 1984.

THE LABOR MARKET AREA

The Radcliff Labor Market Area includes Hardin County and the adjoining or nearby Kentucky counties of Breckinridge, Bullitt, Grayson, Hart, Larue, Marion, Meade, Nelson and Washington.

POPULATION			
Area	1980	1970	Percent Nonwhite
Radcliff	14,519	8,426	20.2
Labor Market Area	276,414	230,112	N/A
Hardin County	88,917	78,421	14.7
Breckinridge County	16,861	14,789	3.8
Bullitt County	43,346	26,090	0.8
Grayson County	20,854	16,445	0.6
Hart County	15,402	13,980	8.1
Larue County	11,922	10,672	4.7
Marion County	17,910	16,714	8.0
Meade County	22,854	18,796	9.0
Nelson County	27,584	23,477	6.6
Washington County	10,764	10,728	10.3

Note: The 1980 counts of population by race are provisional.

Sources: U.S. Department of Commerce, Bureau of the Census, 1980 Census of Population and Housing, March 1981; 1980 Census of Population, Number of Inhabitants, Population Research Unit, Urban Studies Center, University of Louisville, Kentucky Demographics: The 1980 Census of Kentucky, Characteristics of Population, Households, Housing, January 1982.

LABOR FORCE CHARACTERISTICS OF RESIDENTS, 1982		
	Hardin County	Labor Market Area
Civilian Labor Force	27,355	110,470
Employment	24,933	97,647
Agricultural	856	7,854
Nonagricultural	24,077	89,793
Unemployment	2,422	12,823
Rate of Unemployment (%)	8.9	11.6

Source: Kentucky Cabinet for Human Resources, Kentucky Labor Force Estimates, Annual Averages, 1982.

SELECTED COMPONENTS OF NONAGRICULTURAL EMPLOYMENT,
BY PLACE OF WORK, 1982

	<u>Hardin County</u>	<u>Labor Market Area</u>
All Industries (total)	16,112	42,937
Manufacturing	3,842	12,019
Wholesale & Retail Trade	5,158	11,511
Services	2,580	5,955
State/Local Government	2,193	7,397
Contract Construction	678	1,771

Note: Excludes domestic workers, railway workers, certain nonprofit corporations, majority of federal government workers, and self-employed workers.

Source: Kentucky Cabinet for Human Resources, Average Monthly Workers Covered by Kentucky Unemployment Insurance Law, 1982.

RADCLIFF MANUFACTURING FIRMS,
THEIR PRODUCTS AND EMPLOYMENT*

<u>Firm (Establishment date)</u>	<u>Product</u>	<u>Employment</u>			<u>Labor Unions</u>
		<u>Total</u>	<u>Male</u>	<u>Female</u>	
Defilade Products, Inc. (1962)	Wallets, fabric watchbands, holsters	8	2	6	
Hardin County Ready Mix (1979)	Concrete ready mix	14	12	2	
Radcliff Concrete, Inc. (1957)	Ready mixed concrete	30	28	2	Teamsters*
Royalty Printing Company and The Sentinel (1957)	Newspaper, job printing	5	3	2	
UARCO, Inc. (1972)	Business forms	225	--	--	

* See Labor Organizations below.

Source: Kentucky Department of Economic Development, 1984 Kentucky Directory of Manufacturers; Division of Research and Planning.

LABOR ORGANIZATIONS IN MANUFACTURING FIRMS

<u>Union</u>	<u>Representing workers at:</u>
International Brotherhood of Teamsters, Chauffeurs, Warehousemen and Helpers of America	Radcliff Concrete, Inc.

INDUSTRIAL SERVICES

<u>Types of Services</u>	<u>Location</u>	<u>Mileage from Radcliff</u>
Custom Plastics Producers	Fairdale	30
	Louisville	35
Electric Motor Repair	Elizabethtown	11
Grinding, Precision & Tool	Louisville	35
Heat Treating Facilities	Louisville	35
Industrial Equipment & Supplies	Louisville	35
Industrial Gases	Elizabethtown	11
Industrial Waste Removal	Elizabethtown	11
Machine Shops, Tool & Die	Elizabethtown	11
Metal Finishers	Elizabethtown	11
Metal Service Centers	Louisville	35
Millwrights	Elizabethtown	11

Source: Kentucky Department of Economic Development, Kentucky Directory of Selected Industrial Services, 1983.

ESTIMATED MALE LABOR SUPPLY
RADCLIFF LABOR MARKET AREA

Area	Current			Future	
	Total	Unemployed	Under-employed	Not in Labor Force	Becoming 18 years of age 1984 thru 1988
Labor Market					
Area*	17,561	7,626	8,003	1,932	12,356
Hardin	7,149	1,190	5,097	862	3,212
Breckinridge	815	488	268	59	713
Bullitt	2,186	1,625	561	0	2,571
Grayson	1,345	962	383	0	941
Hart	1,177	412	214	551	660
Larue	608	395	213	0	456
Marion	1,069	732	337	0	910
Meade	1,003	306	331	366	1,018
Nelson	1,643	1,172	471	0	1,351
Washington	566	344	128	94	524

*Additional workers may be drawn from other nearby counties.

Note: Unemployed - persons unemployed and actively seeking work;
Underemployed - persons employed but working only 14 to 26 weeks per year;
Not in Labor Force - represents the number of persons who would enter the labor force if suitable employment were available (based on the assumption that persons in Kentucky would like to participate in the labor force in the same proportion that they do nationally).

Sources: Kentucky Cabinet for Human Resources, Kentucky Labor Supply Estimates by Area Development District and County, 1982. Kentucky Department of Economic Development, Future Labor Supply Becoming 18 Years of Age, 1984 thru 1988.

ESTIMATED FEMALE LABOR SUPPLY
RADCLIFF LABOR MARKET AREA

<u>Area</u>	<u>Current</u>			<u>Future</u>	
	<u>Total</u>	<u>Unemployed</u>	<u>Under- employed</u>	<u>Not in Labor Force</u>	<u>Becoming 18 years of age 1984 thru 1988</u>
Labor Market					
Area*	17,534	5,197	5,421	6,916	11,807
Hardin	5,182	1,232	1,782	2,168	3,095
Breckinridge	1,331	320	267	744	720
Bullitt	2,491	1,066	936	489	2,414
Grayson	690	350	340	0	860
Hart	1,745	356	321	1,068	634
Larue	682	176	243	263	459
Marion	820	271	299	250	907
Meade	2,241	337	490	1,414	910
Nelson	1,751	793	595	363	1,357
Washington	601	296	148	157	451

*Additional workers may be drawn from other nearby counties.

Note: Unemployed - persons unemployed and actively seeking work;
Underemployed - persons employed but working only 14 to 26 weeks per year;
Not in Labor Force - represents the number of persons who would enter the labor force if suitable employment were available (based on the assumption that persons in Kentucky would like to participate in the labor force in the same proportion that they do nationally).

Sources: Kentucky Cabinet for Human Resources, Kentucky Labor Supply Estimates by Area Development District and County, 1982. Kentucky Department of Economic Development, Future Labor Supply Becoming 18 Years of Age, 1984 thru 1988.

AVERAGE WEEKLY WAGES BY INDUSTRY,
BY PLACE OF WORK, 1982

	<u>Hardin County</u>	<u>Breckinridge County</u>	<u>Bullitt County</u>	<u>Grayson County</u>
All Industries	\$249.04	\$220.18	\$245.49	\$218.03
Mining & Quarrying	*	188.61	*	*
Contract Construction	289.20	200.80	247.87	229.55
Manufacturing	324.66	226.15	328.16	231.59
Transportation, Communications & Public Utilities	298.75	371.27	261.38	280.39
Wholesale & Retail Trade	182.15	177.40	163.58	184.32
Finance, Insurance & Real Estate	247.84	270.90	235.33	259.43
Services	226.02	171.00	178.34	181.59
State/Local Government	270.23	246.30	245.84	233.69
Other	191.24	*	122.63	137.84
	<u>Hart County</u>	<u>Larue County</u>	<u>Marion County</u>	<u>Meade County</u>
All Industries	\$214.12	\$190.88	\$203.35	\$315.37
Mining & Quarrying	184.09	.00	*	*
Contract Construction	266.14	147.75	260.33	187.60
Manufacturing	247.56	179.34	244.32	*
Transportation, Communications & Public Utilities	221.08	373.43	235.98	380.50
Wholesale & Retail Trade	165.10	160.06	159.92	150.22
Finance, Insurance & Real Estate	224.12	263.97	243.19	202.02
Services	166.09	147.35	158.30	151.05
State/Local Government	246.72	227.17	228.89	258.04
Other	*	199.50	143.65	*
	<u>Nelson County</u>	<u>Washington County</u>		
All Industries	\$257.25	\$200.50		
Mining & Quarrying	381.44	*		
Contract Construction	315.56	322.71		
Manufacturing	337.83	208.58		
Transportation, Communications & Public Utilities	390.66	198.58		
Wholesale & Retail Trade	173.27	154.34		
Finance, Insurance & Real Estate	221.60	271.01		
Services	148.65	140.14		
State/Local Government	245.30	215.24		
Other	199.40	124.81		

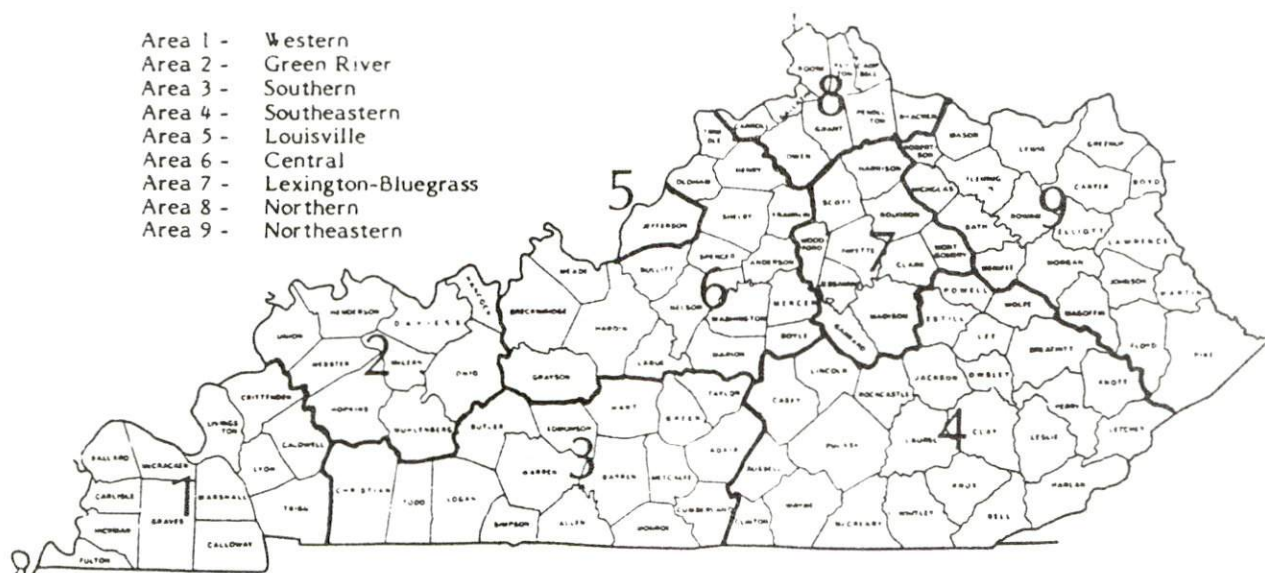
*Not disclosed.

Note: Excludes domestic workers, railway workers, certain nonprofit corporations, majority of federal government workers, and self-employed workers.

Source: Kentucky Cabinet for Human Resources, Average Weekly Wages of Workers Covered by Kentucky Unemployment Insurance Law, 1982.

Occupational wage rates for specific industries are usually not available to most government agencies, and wage data furnished to state employment agencies by individual industrial employers are protected from disclosure by federal law. The most reliable up-to-date wage information can be obtained by direct contact with local employers.

Associated Industries of Kentucky, a voluntary organization of Kentucky businesses, regularly collects occupational wage rates and fringe benefits data from participating member firms. Data are compiled for over 127 clearly defined office, production, and service occupations. Tabulations are published for nine geographical areas of Kentucky, as shown on the map below. It should be noted that the data may be weighted by the preponderance of firms in the larger cities and may be somewhat higher than the rates paid in the smaller communities. Data from these tabulations are available, upon request, from the Kentucky Department of Economic Development, Frankfort, Kentucky 40601.



Associated Industries of Kentucky Area Wage Surveys

PER CAPITA PERSONAL INCOME

<u>Area</u>	<u>1977</u>	<u>1981</u>	<u>Percent Change</u>
Hardin County	\$ 5,395	\$ 7,234	34.1
Labor Market Area Range	\$3,798 - 5,395	\$5,330 - 7,505	N/A
Kentucky	5,797	8,416	45.2
U. S.	6,984	10,495	50.3

Source: U. S. Bureau of Economic Analysis, Kentucky Economic Information System, May 1983.

TRANSPORTATION

Rail

Line serving **Radcliff** - Illinois Central Gulf Railroad

Services - Main line; three northbound and three southbound through freights six days per week plus a turnaround switcher Tuesday, Thursday and Saturday from Cecilia to Kosmosdale; nearest piggyback facilities in Louisville, 35 miles north of Radcliff

For details on routing, schedules, rates, and services, contact:

Manager of Industrial Development
Illinois Central Gulf Railroad
Central Region
Pet Plaza
400 South 4th Street
St. Louis, Missouri 63102
(314) 622-6430

Highways

Radcliff is served directly by U.S. Highway 31W, a "AAA" rated (80,000-pound gross load limit) trucking highway.

Three major highways meet approximately 13 miles south of Radcliff near Elizabethtown, Kentucky, via U.S. 31W. Interstate 65 is a major north-south route extending from Chicago, Illinois, to the Gulf of Mexico. The Blue Grass Parkway extends eastward from Hardin County across central Kentucky and the Western Kentucky Parkway extends westward from Hardin County across west Kentucky.

U.S. 31W provides access to Interstate 64, a major east-west route, and to Interstate 71, a major north-south route, 36 miles north of Radcliff in Louisville, Kentucky.

An access road at the industrial park in Radcliff was recently opened. The first phase of construction included a two-lane road which extends from Logsdon Parkway through the industrial park to Bullion Boulevard near U.S. 31W. A second phase of construction which will increase the road to four lanes is planned for completion in 1984.

Construction of a highway which will connect Radcliff directly with Interstate 65 near Colesburg, approximately 11 miles east, is in the planning stage. Design of the new highway is scheduled to begin in 1985.

Truck Service

<u>Company</u>	<u>Home Office</u>
A & H Truck Line, Inc.*	Evansville, Indiana 47711
American Freight System, Inc.**	9393 West 110th Street Overland Park, Kansas 66210
Bowman Transportation, Inc.*	P.O. Box 17744 Atlanta, Georgia 30316
Branch Motor Express Company*	114 Fifth Avenue New York, New York 10011
Central Transport, Inc.**	34200 Mount Road Sterling Heights, Michigan 48077
Claxon Truck Line, Inc.*	P.O. Box 678 Frankfort, Kentucky 40602
Commercial Motor Freight, Inc. of Indiana*	Indianapolis, Indiana 46241
Duff Truck Line, Inc.*	P.O. Box 359 Lima, Ohio 45802
Marvin Hayes Lines, Inc.*	P.O. Box 468 Clarksville, Tennessee 37040
IML Freight, Inc.* (10,000-pound minimum weight)	2175 South 3270 West Salt Lake City, Utah 84125
Interstate System**	110 Ionia Northwest Grand Rapids, Michigan 49503
Leaseway Express*	4370 Malsbary Road Cincinnati, Ohio 45242
Leitchfield Transfer Company*	P.O. Box 366 Leitchfield, Kentucky 42754
Leoni Motor Express, Inc.*	Chicago Heights, Illinois 60411
The Mason and Dixon Lines, Inc.*	P.O. Box 969 Kingsport, Tennessee 37662
Overnite Transportation Company*	P.O. Box 1216 Richmond, Virginia 23209
R-W Service System, Inc.*	20225 Goddard Road Taylor, Michigan 48180
Robbins Truck Line, Inc.*	Hardinsburg, Kentucky 40143
Smith's Transfer Corporation*	P.O. Box 1000 Staunton, Virginia 24401
Thurston Motor Lines, Inc.*	600 Johnson Road Charlotte, North Carolina 28206

* Interstate and intrastate service.

** Interstate service only.

Source: American Motor Carrier Directory, Fall 1983.

Other Freight ServicesNearest Shipping Center

Emery	Louisville, 35 miles north
Federal Express	Louisville, 35 miles north
KATO Express, Inc. (air cargo service)	Elizabethtown, 11 miles south
Purolator Courier	Louisville, 35 miles north
United Parcel Service	Louisville, 35 miles north

**HIGHWAY MILES AND TRUCK TRANSIT TIME IN DAYS FROM
RADCLIFF, KENTUCKY, TO SELECTED MARKET CENTERS**

City	Highway Miles	Delivery Time TL	City	Highway Miles	Delivery Time TL
Atlanta, Ga.	384	1	Los Angeles, Ca.	2,143	4
Baltimore, Md.	633	2	Louisville, Ky.	35	1
Birmingham, Ala.	338	1	Nashville, Tenn.	142	1
Chicago, Ill.	327	1	New Orleans, La.	659	2
Cincinnati, Ohio	136	1	New York, N. Y.	783	2
Cleveland, Ohio	380	1	Pittsburgh, Pa.	423	2
Detroit, Mich.	395	1	St. Louis, Mo.	298	1
Knoxville, Tenn.	276	1			

Note: Mileage computations are via the best interstate or primary highways, not necessarily the most direct route of travel.

Sources: Rand McNally Road Atlas, 1979. Official Kentucky Mileage Map, 1980.
Delivery time - Robbins Truck Line, Inc., P.O. Box 429, Hardinsburg, Kentucky 40143.

AirLocal

Location:	Elizabethtown Airport 4 miles west of Elizabethtown; 15 miles south of Radcliff
Runways:	1 paved
Length:	5,000 feet
Traffic	
Control:	Unicom, wind sock
Lighting:	Runway and beacon, VASI
Services:	100 octane, jet-A fuel, charter, major A & P repairs, hangar and tie down
Air Freight Service:	Chartered air freight service must be arranged

(Cont'd)

Nearest Scheduled Commercial Airline Service

Standiford Field
Location: 5 miles southeast of center of Louisville, Kentucky;
34 miles north of Radcliff
Runways: 3 paved
Length: 7,800 feet; 7,250 feet; 5,000 feet
Traffic
Control: Control tower
Lighting: Runways, obstructions, beacon and approach and
touchdown lights, center line on one runway
Services: Delta, Eastern, Ozark, Piedmont, TWA, United, USAir,
Wright Airways, Allegheny Commuter, Comair, and
Florida Express; fuel - 100 and jet-A; tie downs;
major A & P repairs; major Avionics repairs; APU,
charter, oxygen, U.S. Customs; taxi, car rentals,
limousine, courtesy car, public transit; weather
information; restaurant, snack bar
Air Freight
Service: Air freight terminal

Bus - Southern Greyhound Bus Line

Taxi - One company, 24-hour service

Rental Services - Auto, truck and trailer rentals are available in Radcliff

Water

Radcliff is 35 miles south of the Ohio River at Louisville where port facilities are maintained. The Louisville and Jefferson County Riverport Authority has been designated as a Foreign Trade Zone and offers complete U.S. Customs services for imports and exports.

POWER AND FUEL

Electricity

Company serving portions of **Radcliff** and **Hardin County** - Kentucky Utilities Company
Source of power - Kentucky Utilities Company
Total generating capacity - 2,639,100 KW*
For industrial rates contact:

Industrial Development Department
Kentucky Utilities Company
One Quality Street
Lexington, Kentucky 40507
(606) 255-1461

Company serving portions of **Radcliff** and **Hardin County** - Nolin Rural Electric Cooperative Corporation
Source of power - East Kentucky Power Cooperative
Total generating capacity - 1,304,000 KW**
For industrial rates contact:

Industrial Development Division
East Kentucky Power Cooperative
P.O. Box 707
Winchester, Kentucky 40391
(606) 744-4812

Company serving northern portion of **Hardin County** - Louisville Gas and Electric Company
Source of power - Louisville Gas and Electric Company
Total generating capacity - 4,207,300 KW
For industrial rates contact:

Louisville Gas and Electric Company
Market Services Department
P.O. Box 32010
Louisville, Kentucky 40232
(502) 566-4246

* A new generating unit is under construction in Carroll County. Due to be completed in 1984, the unit will have a generating capacity of 511,000 KW.

** East Kentucky Power Cooperative's total generating capacity will be increased when a new 600,000 KW coal-fired generation plant is completed in southeast Clark County in 1992.

Natural Gas

Company serving **Radcliff** - Louisville Gas and Electric Company
Source of supply - Texas Gas Resources Corporation
Size of transmission mains - (2) 26-inch (supplier); 16-inch (distributor)
Distribution mains - 2 through 8 inches
Distribution pressure - 35 psi
Btu content - 1,025 per cubic foot
Specific gravity - .583
For rates and supplies contact:

Manager, Gas Market Services
Louisville Gas and Electric Company
P.O. Box 32010
Louisville, Kentucky 40232
(502) 566-4488

Other Fuels (within 11 miles)

Propane

James Gray Bottled Gas Company 158 East Spring Road Radcliff, Kentucky 40160	Langley's Auto Center U.S. 62 Elizabethtown, Kentucky 42701
Hardin Service Center, Inc. 809 North Mulberry Elizabethtown, Kentucky 42701	Olympic Muffler Center 917 North Mulberry Elizabethtown, Kentucky 42701

Fuel oils

Distillate fuel oil -

Ashland Petroleum Company* 736 Hawkins Drive Elizabethtown, Kentucky 42701	Cox Oil Company* Southern States Petroleum Cooperative 337 East Dixie Avenue Elizabethtown, Kentucky 42701
Ball Brothers Oil Company* (Shell Oil Products Jobber) Hawkins Drive Elizabethtown, Kentucky 42701	Guy Williams & Son, Inc.* (Sunoco Jobber) I C Tracks Elizabethtown, Kentucky 42701
Chevron USA, Inc.* Hawkins Drive Elizabethtown, Kentucky 42701	Union Oil Company* (Texaco Jobber) I C Tracks Elizabethtown, Kentucky 42701

Residual fuel oil - Arrangements must be made with the refinery

Low sulphur content coal - Available in Kentucky

*Bulk plant

WATER AND SEWERAGE

Public Water Supply

Company serving **Radcliff** - Hardin County Water District No. 1
409 West Lincoln Trail Boulevard
Radcliff, Kentucky 40160
(502) 351-3222

Source - Sanders Spring, Purtel Spring and Wells
Treatment plant capacity - 7,200,000 gallons per day* (total for 3 plants)
Average daily consumption - 4,000,000 gallons
Peak daily consumption - 5,400,000 gallons
Type treatment - Chlorination, coagulation, filtration and fluoridation
Storage capacity - 1,875,000 gallons including clear wells
Size lines - 14, 12, 10, 8, 6, 4 and 2 inches
Average pressure - 60 psi
Average temperature - 60 degrees F.

MONTHLY WATER RATES

First	2,000 gallons or less	\$4.76 (minimum)
Next	8,000 gallons	1.15 per M gallons
Next	15,000 gallons	.95 per M gallons
Next	15,000 gallons	.78 per M gallons
All over	40,000 gallons	.65 per M gallons

Tap-on charge: 5/8 x 3/4-inch meter - \$250
3/4-inch meter - 280
1-inch meter - 340
1 1/2-inch meter - 480
2-inch meter - 625

Meter installations in existing services:

Utilizing the existing meter box - \$105
Installing another meter box - \$135

* Hardin County Water District No. 1 began operating its third treatment plant in July 1983. The new plant has a treatment capacity of 3 million gallons per day which increases the total treatment capacity of the water district to 7.2 million gallons per day. In connection with the new plant, two storage facilities with a total capacity of 1 million gallons were constructed.

Name of water district - Hardin County Water District No. 2*
P.O. Box 66
Elizabethtown, Kentucky 42701
(502) 737-1056

Area served - Hardin County (except Elizabethtown, Radcliff, Vine Grove and Upton)

Date when water district began operating - 1969

Source of supply of treated water - Hardin County Water District No. 1 and City of Elizabethtown

Average amount of water used in a 24-hour period - 1,396,200 gallons

Peak amount of water used in a 24-hour period - 1,958,600 gallons

Storage capacity - 1,000,000 gallons

Average pressure - N/A

Average temperature - 59 degrees F.

Size lines - 10, 8, 6, 4 and 2 inches

MONTHLY WATER RATES

5/8-inch meter

First	2,000 gallons	\$ 5.60 minimum bill
Next	2,000 gallons	1.70 per M gallons
Next	6,000 gallons	1.30 per M gallons
Next	30,000 gallons	1.05 per M gallons
Next	60,000 gallons	.90 per M gallons
All over	100,000 gallons	.80 per M gallons

1-inch meter

First	5,000 gallons	\$14.00 minimum bill
Next	5,000 gallons	1.30 per M gallons
Next	30,000 gallons	1.05 per M gallons
Next	60,000 gallons	.90 per M gallons
All over	100,000 gallons	.80 per M gallons

1 1/2-inch meter

First	10,000 gallons	\$28.00 minimum bill
Next	30,000 gallons	1.05 per M gallons
Next	60,000 gallons	.90 per M gallons
All over	100,000 gallons	.80 per M gallons

(Cont'd)

* Hardin County Water District No. 2 is planning an expansion of its service area into southern Hardin County. The project is to include 35 miles of six to twelve-inch water mains, a new pump station and two new storage tanks tentatively planned to hold a total of 400,000 gallons. Work on the project is scheduled to begin in the spring of 1984. Tentative plans for the future include the construction of a 2 million to 4 million gallon per day treatment plant.

2-inch meter

First	20,000 gallons	\$55.00 minimum bill
Next	20,000 gallons	1.05 per M gallons
Next	60,000 gallons	.90 per M gallons
All over	100,000 gallons	.80 per M gallons

3-inch meter

First	30,000 gallons	\$84.00 minimum bill
Next	10,000 gallons	1.05 per M gallons
Next	60,000 gallons	.90 per M gallons
Next	100,000 gallons	.80 per M gallons

4-inch meter

First	50,000 gallons	\$ 140.00 per M gallons
Next	50,000 gallons	.90 per M gallons
All over	100,000 gallons	.80 per M gallons

6-inch meter

First	100,000 gallons	\$ 280.00 minimum bill
All over	100,000 gallons	.80 per M gallons

Tap-on charge:

5/8-inch x 3/4-inch meter -	\$ 325.00
1-inch meter -	410.00
1½-inch meter -	800.00
2-inch meter -	1,250.00
3-inch meter -	2,090.00
4-inch meter -	3,575.00
6-inch meter -	5,550.00

The tap-on charge for a 3-inch, 4-inch or 6-inch meter shall be the actual cost of installation in accordance with a signed agreement between the water district and the customer desiring the meter.

Raw Water

Surface water sources - Ohio River, Salt River and Rolling Fork River

Average discharge - Ohio River at Louisville, Kentucky - 115,800 cfs (54 years, USGS); Salt River at Shepherdsville, Kentucky - 1,571 cfs (44 years, USGS); Rolling Fork River near Boston, Kentucky - 1,796 cfs (44 years, USGS)

Expected ground water yield - 500 to 1,000 gpm along Ohio River; 50 to 200 gpm in southern, western and northern sections of the county; 5 to 50 gpm over majority of the county; 5 gpm or less along western and northeastern borders

Sewerage

Company serving **Radcliff** - City of Radcliff Sewerage System*

P.O. Box 606

Radcliff, Kentucky 40160

(502) 351-6270

Design capacity - 1,700,000 gallons per day (total of two plants)

Average daily flow - 1,200,000 gallons

Type of treatment - Primary and secondary

Treatment process - Clarification, contact stabilization, aeration and polishing lagoon

Treated effluent discharged into - Mill Creek

Size of sanitary mains - 8 through 16 inches

Monthly rates - Based on water consumption:

First	2,000 gallons or less	\$3.25	(minimum)
Next	8,000 gallons	.875	per M gallons
Next	30,000 gallons	.70	per M gallons
Over	40,000 gallons	.65	per M gallons

Tap-on charge: Within city limits - \$300
Outside city limits - 400

* The City of Radcliff is in the early planning stage for the construction of a new wastewater treatment plant which will have a proposed treatment capacity of between 2.5 million and 4.0 million gallons per day.

CLIMATE

Hardin County

Temperature

Normal (30-year record)	55.20 degrees
Average annual 1982	55.50 degrees
Record highest, September 1954 (38-year record)	103.00 degrees
Record lowest, January 1963 (38-year record)	-21.00 degrees
Normal heating degree days (30-year record)	4,729
(Heating degree day totals are the sums of negative departures of average daily temperatures from 65 degrees F.)	

Precipitation

Normal (30-year record)	44.49 inches
Mean annual snowfall (39-year record)	16.40 inches
Total precipitation 1982	38.76 inches
Mean number days precipitation (.01 inch or more) (38-year record)	131
Mean number days thunderstorms (38-year record)	46

Prevailing Winds (17-year record)

South

Relative Humidity

1 a.m.	77 percent (18-year record)
7 a.m.	81 percent (19-year record)
1 p.m.	60 percent (19-year record)
7 p.m.	64 percent (19-year record)

Source: U.S. Department of Commerce, Environmental Science Service Administration, Climatological Data, 1982. Station of record: Lexington, Kentucky.

LOCAL GOVERNMENT

City

Structure - Mayor - 4-year term; 6 council members - 2-year terms

Budget 1983-84 -	General Fund	\$2,072,248
	Sewer Fund	976,065

Fees and licenses - Businesses pay an annual gross receipts license tax based on a rate prescribed for each type of business.

County

Structure - County Judge/Executive - 4-year term; 8 magistrates - 4-year terms

Budget 1983-84 - General Fund \$2,906,592; Road Fund \$880,700

Assessed Value of Property, 1983*

<u>Classes of Property</u>	<u>Radcliff</u>	<u>Hardin County</u>
Real Estate	\$178,120,000	\$844,034,150
Tangibles	33,680,720	163,842,733

Property Taxes

All property in Kentucky is assessed at 100 percent of fair cash value.

Land and buildings are taxed by the state and may be taxed by local jurisdictions. The state rate is \$0.221 per \$100 of assessed valuation.

Manufacturing machinery, raw materials inventories, pollution control equipment, and goods in the process of manufacture are not subject to local taxation. The state rate is \$0.15 per \$100.

Other tangible personal property owned by manufacturers (automobiles, trucks, finished goods, office furniture, office equipment) is taxed by the state at \$0.45 per \$100 and may be taxed by local jurisdictions.

Intangible personal property located in Kentucky (money in hand, shares of stock, notes, bonds, accounts receivable, and other credits) is taxed by the state at \$0.25 per \$100, and is not subject to local taxation.

Property stored in public warehouses in a transit status is not subject to local taxation. The state rate is only \$0.015 per \$100.

Private leaseholds in industrial facilities owned by cities or counties and financed by industrial revenue bonds are subject to a state tax of \$0.015 per \$100 of value (essentially the lessee's equity, adjusted for appreciation or depreciation). Local taxation is not permitted.

* Excludes Homestead Exemptions.

Combined State and Local Rates Per \$100 Valuation, 1983*
(100% assessment)

	<u>Site Inside City of Radcliff</u>	<u>Site Inside Unincorporated Hardin County</u>
1. Land and buildings	\$0.6746	\$0.4756
2. Mfg. machinery, raw materials, goods in process, pollution control equipment	0.1500	0.1500
3. Finished goods, office equipment, vehicles, other tangibles	0.9376	0.7386
4. Intangibles (accounts rec., notes, bonds, etc.)	0.2500	0.2500
5. Property stored in public warehouses in a transit status	0.0150	0.0150
6. Leaseholds in industrial revenue bond financed plants	0.0150	0.0150

Utilities Gross Receipts Tax for Schools

A 3 percent tax is levied on utilities receipts for schools in Hardin County. Tax is paid by all consumers of utilities as an add-on to the utilities bills. Exempted are receipts from utilities services that are resold and the receipts from the sale of energy or energy producing fuels that exceed 3 percent of the cost of production in manufacturing, processing, mining or refining.

Planning and Zoning

City agency - Radcliff Planning and Zoning Commission

Zoning enforced - Within city limits of Radcliff

Subdivision regulations enforced - Within city limits of Radcliff

Local codes enforced - Building and housing

Mandatory state codes enforced - Kentucky Plumbing Code, National Electric Code, Kentucky Boiler Regulations and Standards, Kentucky Building Code (modeled after BOCA code)

County agency - Hardin County Planning and Development Commission

Subdivision regulations enforced - County-wide

Local codes enforced - Building and housing

County-wide land use regulations have been formulated and are to be implemented by January 1984

Mandatory state codes enforced - Kentucky Plumbing Code, National Electric Code, Kentucky Boiler Regulations and Standards, Kentucky Building Code (modeled after BOCA code)

* Kentucky Department of Economic Development.

Safety

Police

	Radcliff	Hardin County
Total staff	18 full time	8 full time
	7 auxillary	4 part time
Radio-patrol cars	10	6

Fire

Insurance Service Office,
Public Protection
Classification
Volunteers

6
25

*

Rescue Service

Hardin County Disaster and Emergency Service:

Number of volunteers - 43

Equipment - Boats and motors, communications equipment, dragging equipment, four rescue vans, one jeep, emergency generator, "Jaws of Life" and miscellaneous rescue equipment

Personnel training - All volunteers have basic first aid and CPR training. Six volunteers are emergency medical technicians and two volunteers are paramedics

Refuse Collection and Disposal

Radcliff

Type service	Private
Fee charged:	
residential	\$7 monthly
business	Contract
industrial	Contract
Collection frequency:	
residential	Once or twice weekly
business	Contract
industrial	Contract
Disposal method	Landfill

Several private companies provide refuse collection service to Radcliff and Hardin County. The fee charged and the collection frequency are based on the type service desired as negotiated.

* Fourteen fire departments currently serve Hardin County. These departments are all volunteer with the exception of Elizabethtown. The insurance classification for Elizabethtown is 4, Radcliff is 6, Vine Gove is 7 and West Point is 8. All other areas of the county are Class 9 within five road miles of the fire station and Class 10 when beyond five miles.

EDUCATION

Public Schools

Hardin County*

Total Enrollment (Spring 1983)	10,367
Elementary	5,468**
Junior High	2,542
High School	2,357
Student-Teacher Ratio	20-1
Elementary	20-1
Junior High	21-1
High School	19-1
Accreditation	Southern Association of Colleges and Schools
Percent High School Graduates to College (1982)	39.6
Expenditures Per Pupil (1982-83)	\$ 1,618.30
Bonded Indebtedness (June 30, 1983)	\$9,425,000***

* In August 1981 a new \$2.5 million elementary school opened within the Hardin County School System. During the 1981-82 school year, the Hardin County School System was accepted as a member of the Southern Association of Colleges and Schools and recognized as a model for other school systems in a new accreditation process by the Kentucky Department of Education. In addition, the school system has received a \$14,000 grant from Radio Shack Corporation for 11 computers.

** Includes kindergarten.

*** Includes refunding issue of \$2,230,000.

Nonpublic Schools

	<u>St. James Elementary (Elizabethtown)</u>	<u>Elizabethtown Montessori Child Center (Elizabethtown)</u>	<u>Family Centered Christ Elementary (Elizabethtown)</u>
Total Enrollment	172	125	3
Elementary	172 (K-6)	125 (K-6)	3 (K-5)
High School	--	--	--
Student-Teacher Ratio	17-1	31-1	3-1
Elementary	17-1	31-1	3-1
High School	--	--	--
	<u>St. Brigid Elementary (Vine Grove)</u>	<u>St. Christopher Elementary (Radcliff)</u>	<u>Fort Knox Dependent</u>
Total Enrollment	186	132	3,851
Elementary	186 (1-8)	132 (1-6)	3,255 (K-8)
High School	--	--	596
Student-Teacher Ratio	23-1	22-1	23-1
Elementary	23-1	22-1	25-1
High School	--	--	16-1

Area Colleges and Universities

<u>Name</u>	<u>Location (Miles distant)</u>	<u>Enrollment (Fall, 1982)</u>	<u>Highest Degree Conferred</u>
Elizabethtown Community College	Elizabethtown, Kentucky (11)	2,187	Associate
University of Louisville	Louisville, Kentucky (35)	19,744	Doctorate, M.D., D.M.D., J.D.
Spalding University	Louisville, Kentucky (35)	763	Masters, Specialist
Bellarmino College	Louisville, Kentucky (35)	2,350	Masters
Jefferson Community College	Louisville, Kentucky (35)	6,595	Associate
Indiana University Southeast	New Albany, Indiana (38)	4,640	Masters*
Campbellsville College	Campbellsville, Kentucky (53)	702	Baccalaureate
St. Catharine College	Springfield, Kentucky (54)	227	Associate

Elizabethtown Community College

Elizabethtown Community College, located 11 miles south of Radcliff in Elizabethtown, is a member of the University of Kentucky's Community College System and is accredited by the Southern Association of Colleges and Schools. The College offers an Associate Degree in Applied Science in the following fields: Nursing, Forest and Wood Technology, Secretaryship and General Management. In addition, the college offers the first two years of study toward baccalaureate degrees in any programs offered by four-year colleges and universities. An Associate in Arts or an Associate in Science degree is awarded in the pre-baccalaureate program.

Fort Knox Extension Campuses

Six universities operate extension campuses at Fort Knox Military Reservation, located adjacent to the city of Radcliff. These extension campuses confer various graduate and undergraduate degrees and are open to the public. In the spring of 1983 the total enrollment of the extension campuses was approximately 1,360. The extension campuses are operated by: Eastern Kentucky University, University of Kentucky, University of Louisville, Western Kentucky University, Embry Riddle Aeronautical University and University of Southern California.

* Masters in education only.

Vocational Schools

Both the state vocational-technical schools and the area vocational education centers are operated by the Kentucky Department of Education. The state vocational-technical schools enroll persons full time who are at least 16 years of age and not in school. These students attend classes for six hours each day. The area vocational education centers are designed to accommodate high school students who are at least 15 years of age. These students attend vocational school for three hours each day. In Hardin County, the high school program and the adult program are both taught at the state vocational-technical school. The state vocational-technical schools and area education centers offer evening courses to enable working adults to upgrade current job skills.

Nearest State School

Location	Elizabethtown State Vocational- Technical School
Miles Distant	Elizabethtown 11
Curriculum	Business and Office Accounting Management* Clerical Secretarial Word Processing* Consumer and Home Economics Commercial Foods Retail Store Worker* Industrial Education Agricultural Mechanics* Air Conditioning Appliance Repair Auto Mechanics Carpentry Diesel Mechanics* Drafting Electronics* General Industry Worker* Industrial Electricity Industrial Maintenance Machine Shop Masonry* Plumbing* Radio and T.V. Repair Welding

* Tentatively scheduled to begin April 1984.

HEALTH

Local Medical Personnel

Physicians - 16
Dentists - 5

Hospitals

<u>General Hospital</u>	<u>Location</u>	<u>Beds</u>
Hardin Memorial Hospital*	Elizabethtown	206

General hospital facilities - Four operating rooms, fracture room, cysto room, X-ray, nuclear medicine, ultra sound, CAT scan, intensive care, automated laboratory, pharmacy, emergency room, eye surgery, pediatrics, respiratory therapy, delivery room, nursery, blood bank, physical therapy, social services, psychiatric services, EKG, and EEG

Medical staff - 62 physicians and dentists, 22 registered nurses, and 28 graduate licensed practical nurses

Other Medical Facilities

Lincoln Trail Medical Offices
Radcliff Medical Clinic
North Hardin Medical Center**

Ambulance Service

Name - Hardin County Ambulance Service (Stations in Elizabethtown, Sonora and Vine Grove)
Staff - 15 emergency medical technicians (full-time), eight emergency medical technicians (part-time)
Service - 24-hour, county-wide except for the city of West Point
Equipment - Five modular-type ambulances and one van-type ambulance

Public Health

Facility - Hardin County Health Department (Elizabethtown)*
Staff - 11 registered nurses, 3 sanitarians, dental hygienist, social worker, 2 speech pathologists, 10 clerk typists, 5 community health workers, custodian

-
- * An expansion at Hardin Memorial Hospital is under way. The project includes the construction of a new 80,000-square-foot wing and the addition of 94 more beds. The project is scheduled for completion in 1986.
- ** The North Hardin Medical Center opened in January 1983. The center contains doctors' offices, a pharmacy, a lab, a physical therapy room and X-ray facilities.
- *** Hardin County is a member of the Lincoln Trail District Health Department. Through membership in the district health department, county health departments are able to provide a wider range of services by sharing resources.

OTHER LOCAL FACILITIES

Communications

Telephone -	Brandenburg Telephone Company and General Telephone Company
Services -	Standard
Telegraph -	Western Union
Services -	Toll-free number, 1-800-325-5100; counter service available at Fort Knox
Postal -	U.S. Post Office
Class -	First
Mail received -	Three times daily
Mail dispatched -	Three times daily
Newspapers -	
Daily and circulation -	News Enterprise, 13,821 (approximately 4,800 in North Hardin County)
Weekly and circulation -	The Sentinel, 4,200
Other papers received from -	Louisville, Kentucky
Radio -	WSAC-AM and WWKK-FM
Major stations received from -	Louisville, Kentucky; Cincinnati, Ohio; Nashville, Tennessee
Television -	
Cable service	
Reception from -	Bowling Green, Lexington and Louisville, Kentucky; Evansville, Indiana; Chicago, Illinois; Atlanta, Georgia
Kentucky Educational Television -	Elizabethtown transmitter - WKZT - Channel 23 Louisville transmitter - WKMJ - Channel 68

Library Services

Public library - Hardin County Public Library (branch located in Radcliff)

Size collection - 61,809 volumes

Circulation, 1981-82 - 160,668

Services - Bookmobile, children's story hour, records, pictures, tapes, microfilm reader, copying machine, special adult and children's programs, audiovisual equipment for loan, films, film strips, reference and information service, Interlibrary Loan, library building is available for community programs

Religious Institutions

Number of churches - 20

Denominations - Assembly of God
 Baptist
 Catholic
 Christian
 Church of Christ
 Church of God
 Church of the Nazarene
 Jehovah's Witnesses
 Methodist
 Non-Denominational

Nearest Synagogues - Louisville, Kentucky, 35 miles north

Congregations - Adath Israel Brith Sholom (reform)
 Adath Jeshurum (conservative)
 Anshei Sfard (orthodox)
 Keneseth Israel (orthodox)
 Sholom (reform)

Financial Institutions

<u>Banks</u>	<u>Assets</u>	<u>Deposits</u>	<u>Statement Date</u>
The Bank of North Hardin	\$ 19,844,665.69	\$16,802,229.27	6/30/83
Citizens Bank*	58,760,000.00	53,411,000.00	12/31/82
First Hardin National Bank and Trust*	148,811,000.00	133,633,000.00	6/30/83
Fort Knox National Bank*	42,719,343.00	34,003,095.00	12/31/82
<u>Savings and Loan Associations</u>	<u>Assets</u>	<u>Savings Accounts</u>	<u>Statement Date</u>
First Federal Savings and Loan Association of Elizabethtown*	\$131,744,138.45	\$115,681,112.71	12/31/82
Lincoln Federal Savings and Loan Association**	494,067,492.00	406,165,722.00	12/31/82

Hotels and Motels***

Total number - 4
Total rooms - 138

* The main office is located in Elizabethtown and a branch office is located in Radcliff.

** Lincoln Federal Savings and Loan is headquartered in Louisville and operates branch offices in six Kentucky cities. The assets and savings accounts shown above are taken from the combined financial statement of all locations

*** A new hotel with 66 units was completed in September of 1983. Further construction at the new facility will result in 28 additional units by the summer of 1984. An expansion currently under way at an existing hotel will increase its total units by 22 in early 1984. As a result, total units will reach 188 by Summer 1984.

Clubs and Organizations

Adult Activities Club
American Federation of
Government Employees (AFGE)
American Legion
American Legion Auxiliary
Ancestral Trails
Armor Center Civic League
Association of United States
Army (AUSA)
Boy Scouts
Brownies
CB Club
Chamber of Commerce
Eastern Star
Emergency Disaster Unit
Foreign Language Club
Fort Knox NCO Wives Club
Fort Knox Officer's Wives Club
Fraternal Order of Police
Future Business Leaders of
America (FBLA)
Future Farmers of America
(FFA)
Future Homemakers of
America (FHA)
Future Teachers of America
(FTA)

Girl Scouts
International F & AM Masons
International Wives Club
Jaycees
Knights of Columbus Council
Ladies Auxiliary (Fire Department)
Lions Club
Masonic Lodge
Math Club
Music Club
Optimist International
Parents Without Partners
Pep Club
Radcliff Arts Guild
Radcliff Homemakers
Radcliff Industrial Foundation
Radcliff Junior Women's Club
Radcliff Ministerial Association
Radcliff Sunrise Optimist
Radcliff Woman's Club
Retired Officers Association
Rotary Club
Teens Who Care
Veterans of Foreign Wars (VFW)
Veterans of Foreign Wars Ladies
Auxiliary

RECREATION

Local

The citizens of Radcliff and North Hardin County are provided excellent recreational facilities. Under the supervision of a full-time recreation director, many programs are available for tots to senior citizens.

The David S. Colvin Community Center provides the community with an Olympic-sized swimming pool, a wadding pool, horseshoe pits, shuffleboard courts, tennis courts, and a game room. Two meeting rooms (one fully equipped with kitchen facilities) are available for community and private gatherings.

The Radcliff City Park has ample parking space, shade trees, walkways, a pavilion and is the location of the Hardin County Playhouse.

The Duvall Park provides four baseball/softball fields, a concession stand and experiences heavy participation by teams in organized league play.

Radcliff Junior High School maintains an excellent softball field which is used by male and female softball teams. The North Hardin High School's football field and the Parkway Elementary School's soccer field are available for public use.

Summer activities supervised by the Radcliff Recreation Department are soccer, baseball/softball, water polo, tennis, kids' crafts, swimming lessons, teen dances, super-dad competition day and children's theater.

Senior citizens are provided recreation programs including bingo, horseshoe and shuffleboard competition.

The City of Radcliff has purchased a 19.5-acre site which will be used for a new recreational park. Development of the park will begin in 1984. The park will contain a regulation football field, a regulation soccer field, a youth-size soccer field and two softball fields.

Area (Within 60 miles)

Located near Radcliff is the **Fort Knox Military Reservation**. Named in honor of revolutionary war general, first secretary of war, Henry T. Knox, the vast 110,300-acre military reservation was activated in 1918.

The **Patton Museum of Cavalry and Armor** is located at Fort Knox. Opened in 1949, the museum has cavalry and armor displays dating from the revolutionary war to the war in Vietnam. Also displayed are personal effects of famed World War II General George S. Patton, Jr. Much enemy armor, captured by General Patton and his troops, is displayed on the grounds of the museum.

The **United States Gold Depository** at Fort Knox is a two-story granite, steel, and concrete bullion depository containing a great part of the United States' gold reserve. The stored gold is in standard mint bars of almost pure gold or melted coin gold.

Otter Creek Park, approximately 10 miles northwest of Radcliff between Muldraugh and Brandenburg, is a 3,000-acre woodland area on the Ohio River. Facilities include rustic lodges and family cabins available by reservation; a 165-site campground; a visitors' center; picnic areas; hiking trails; a boat ramp; tennis, basketball, and volleyball courts; a ball field; and a playground.

Abraham Lincoln Birthplace National Historic Site, located 26 miles south of Radcliff near Hodgenville, features the log cabin which was the birthplace of Abraham Lincoln, enclosed within a granite memorial shrine. The grounds include 116 acres of the original Thomas Lincoln farm and a visitors' center with audiovisual programs and exhibits on the Lincoln family.

Bernheim Forest Arboretum and Nature Center, 34 miles east of Radcliff, is a privately endowed 10,000-acre forest and wildlife refuge. The area contains over 1,400 labeled varieties of plants, trees and shrubs; ornamental gardens; a museum; nature trails and water fowl ponds.

Louisville, 35 miles north of Radcliff, provides a wide variety of recreational opportunities. The most noted recreational event in Louisville is the Kentucky Derby at Churchill Downs. The "Run for the Roses" is the oldest continuously held horse race in the United States. Other attractions include: Kentucky Center for the Arts, Macauley Theatre, Actors Theatre of Louisville, Louisville Children's Theatre, the Louisville Bach Society, the Louisville Orchestra, the Louisville Ballet, the Kentucky Opera Association, several museums, the Louisville Zoological Gardens, University of Louisville sporting events, rock concerts, and the "Belle of Louisville" sternwheeler.

My Old Kentucky Home State Park, 37 miles southeast of Radcliff in Bardstown, portrays an image of the South's gentle and leisurely home life before the Civil War. The restored Georgian Colonial mansion is where composer Stephen Foster visited and where he was inspired to write "My Old Kentucky Home." One of the nation's most successful outdoor dramas, "The Stephen Foster Story", is presented in the park's amphitheatre mid-June until labor Day. The park also offers a 40-site campground, a gift shop, a 9-hole golf course and pro shop, a picnic area, and planned recreation.

E. P. "Tom" Sawyer State Park, 45 miles northeast of Radcliff, is a 400-acre park located near Louisville. Recreational facilities include an outdoor Olympic-size pool, a bathhouse, 12 lighted tennis courts, a picnic area, an archery range, and soccer fields. Planned recreation and a playground are offered year-round. Indoor facilities are available for basketball, volleyball, exercise classes, dance classes and various other events.

Mammoth Cave National Park is located 55 miles south of Radcliff near Cave City. Beneath 52,000 park acres, Mammoth Cave is among the major tourist attractions of all times. It is one of the largest cave networks ever discovered, with at least 230 miles of caverns. Some famous sights are Snowball Dining Room (267 feet below surface) Frozen Niagara, Crystal Lake, and Bottomless Pit. The park also features scenic boat trips on the Green River and nature and hiking trails. Park accommodations include a hotel with distinctive gift shops featuring native Kentucky and Southern Highland handicrafts, a motor lodge, hotel cottages, woodland cottages, and a hotel annex with budget accommodations and craft shop featuring live exhibits of broom making and weaving. Other park facilities include the hotel dining room and coffee shop, a service center, group meeting facilities, a campground, a picnic area, and tennis and shuffleboard courts.

Nolin River Lake is just north of Mammoth Cave National Park. The lake has a surface area of 5,800 acres and offers facilities for camping, boating, and fishing.

Noteworthy for its spaciousness, **Rough River Dam State Resort Park** at Falls of Rough is 55 miles southwest of Radcliff. The 377-acre park on Rough River Lake has a 40-room lodge with a dining room, a coffee shop, a gift shop, and a meeting room. Cottages and camping sites are also available. Recreational facilities include a launching ramp, a dock with open and covered slips, fishing and pleasure boat rentals, a 9-hole, 3-par golf course, a swimming pool, a sand beach with a bathhouse complex, tennis courts, an archery range, hiking trails, picnic and playground areas, and planned recreation. Cruise boat excursions on Rough River Lake are available on the "Lady of the Lake" in season.

Green River Lake State Park near Campbellsville, 56 miles southeast of Radcliff, is made up of 1,300 acres surrounding an 8,200-acre lake. The park is open all year-round and offers 96 campsites, a beach, boat docks, fishing, swimming, and a picnic area.

Lincoln Homestead State Park, 58 miles southeast of Radcliff near Springfield, is a 153-acre park on the original land settled by Abraham Lincoln's family. The actual building in which Nancy Hanks, mother of President Lincoln, lived during her courtship with Thomas Lincoln is preserved here as well as a replica of the 1782 cabin where Lincoln lived as a boy. The park also has a museum, a gift shop, a picnic area, and an 18-hole golf course.

Taylorsville Lake, 58 miles northeast of Radcliff near Taylorsville, was developed by the U.S. Army Corps of Engineers. The 3,050-acre lake and 10,700-acre recreation area offers facilities for fishing, boating, swimming, and wildlife recreation.

COMMUNITY IMPROVEMENTS

Recent

An access road at the industrial park in Radcliff was recently opened. The first phase of construction included a two-lane road which extends from Logsdon Parkway through the industrial park to Bullion Boulevard near U.S. 31 W. The second phase of the project will increase the road to four lanes during 1984.

Hardin County Water District No. 1 began operating its third treatment plant in July 1983. The new plant has a treatment capacity of 3 million gallons per day which increases the total treatment capacity of the water district to 7.2 million gallons per day. In connection with the new plant, two storage facilities with a total capacity of 1 million gallons were constructed.

In August 1981 a new \$2.5 million elementary school opened within the Hardin County School System. During the 1981-82 school year, the Hardin County School System was accepted as a member of the Southern Association of Colleges and Schools and recognized as a model for other school systems in a new accreditation process by the Kentucky Department of Education. In addition, the school system has received a \$14,000 grant from Radio Shack Corporation for 11 computers.

The North Hardin Medical Center opened in January 1983. The center contains doctors' offices, a pharmacy, a lab, a physical therapy room and X-ray facilities.

A new Best Western Hotel was recently constructed in Radcliff and began operating in September 1983. Further construction is planned to increase the number of rooms from sixty-six to ninety-four by the summer of 1984.

A new 7,000-square-foot post office building was completed in Radcliff in September 1983.

Under Way

An expansion at Hardin Memorial Hospital is under way. The project includes the construction of a new 80,000-square-foot wing and the addition of 94 more beds. The project is scheduled for completion in 1986.

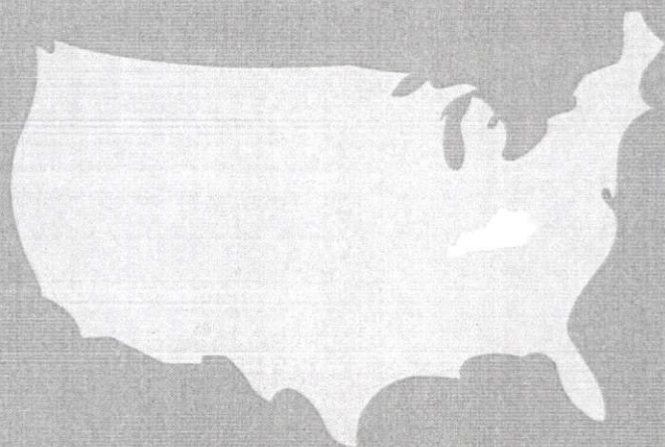
Planned

Construction of a highway which will directly connect Radcliff with Interstate 65 near Colesburg, approximately 11 miles east, is in the planning stage. Design of the new highway is scheduled to begin in 1985.

Hardin County Water District No. 2 is planning an expansion of its service area into southern Hardin County. The project is to include 35 miles of six to twelve-inch water mains, a new pump station and two new storage tanks tentatively planned to hold a total of 400,000 gallons. Work on the project is scheduled to begin in the spring of 1984. Tentative plans for the future include the construction of a 2 million to 4 million gallon per day treatment plant.

The City of Radcliff is in the early planning stage for the construction of a new wastewater treatment plant which will have a proposed treatment capacity of between 2.5 million and 4.0 million gallons per day.

The City of Radcliff has purchased a 19.5-acre site which will be used for a new recreational park. Development of the park will begin in 1984. The park will contain a regulation football field, a regulation soccer field, a youth-size soccer field and two softball fields.



Kentucky Department of Economic Development
Capital Plaza Tower
Frankfort, Kentucky 40601 • Phone (502) 564-4270