

1986

Industrial Resources: Madison County - Richmond

Kentucky Library Research Collection
Western Kentucky University, spcol@wku.edu

Follow this and additional works at: https://digitalcommons.wku.edu/madison_cty

 Part of the [Business Administration, Management, and Operations Commons](#), [Growth and Development Commons](#), and the [Infrastructure Commons](#)

Recommended Citation

Kentucky Library Research Collection, "Industrial Resources: Madison County - Richmond" (1986). *Madison County*. Paper 12.
https://digitalcommons.wku.edu/madison_cty/12

This Report is brought to you for free and open access by TopSCHOLAR®. It has been accepted for inclusion in Madison County by an authorized administrator of TopSCHOLAR®. For more information, please contact topscholar@wku.edu.

MADISON COUNTY

RESOURCES FOR ECONOMIC DEVELOPMENT

Richmond



KENTUCKY
The business environment is right.

RICHMOND, KENTUCKY --- Index to Industrial Sites --- 1986

For more information contact the Kentucky Department of Economic Development, Industrial Development & Marketing Division, Capital Plaza Tower, Frankfort, Kentucky 40601 (502-564-7140).



Site 186 - 59.4 Acres

RICHMOND TECHNOLOGY PARK

LOCATION: Within northwestern city limits

ZONING: I-2

HIGHWAY ACCESS: Interstate 75 interchange approximately 0.6 mile north via Keeneland Drive and US 25/421; Tates Creek Road adjacent to southern boundary

RAILROAD: Not rail served

WATER: Richmond Water, Gas and Sewerage Works

Size Line: 18-inch line along east side of Keeneland Drive; 10-inch line along north side of Hanger Drive

SEWERAGE: Richmond Water, Gas and Sewerage Works

Size Line: 12-inch line serves the park

NATURAL GAS: Richmond Water, Gas and Sewerage Works

Size Line: 6-inch line along west side of Keeneland Drive

ELECTRICITY: Kentucky Utilities Company

OWNERSHIP: City of Richmond

SCHOOL DISTRICT: Madison County

Site 286 - 24.7 Acres

LOCATION: Within southern city limits

ZONING: I-2

HIGHWAY ACCESS: KY 876 (Richmond Bypass) approximately 0.3 mile north via Boggs Lane; Interstate 75 interchange approximately 2.3 miles west via Boggs Lane and KY 876

RAILROAD: CSX 200 feet from northeast corner; spur location graded to site

WATER: Richmond Water, Gas and Sewerage Works

Size Line: 16-inch line approximately 100 feet away along east side of Boggs Lane

SEWERAGE: Richmond Water, Gas and Sewerage Works

Size Line: 15-inch line approximately 100 feet away along east side of Boggs Lane

NATURAL GAS: Delta Natural Gas Company

Size Line: 6-inch line approximately 100 feet away along east side of Boggs Lane

ELECTRICITY: Kentucky Utilities Company

OWNERSHIP: Helmick Corporation

SCHOOL DISTRICT: Madison County



SCALE: 1 inch = 2000 feet

CONTOUR INTERVAL: 10 feet

BASE: USGS 7.5 minute series - 1965

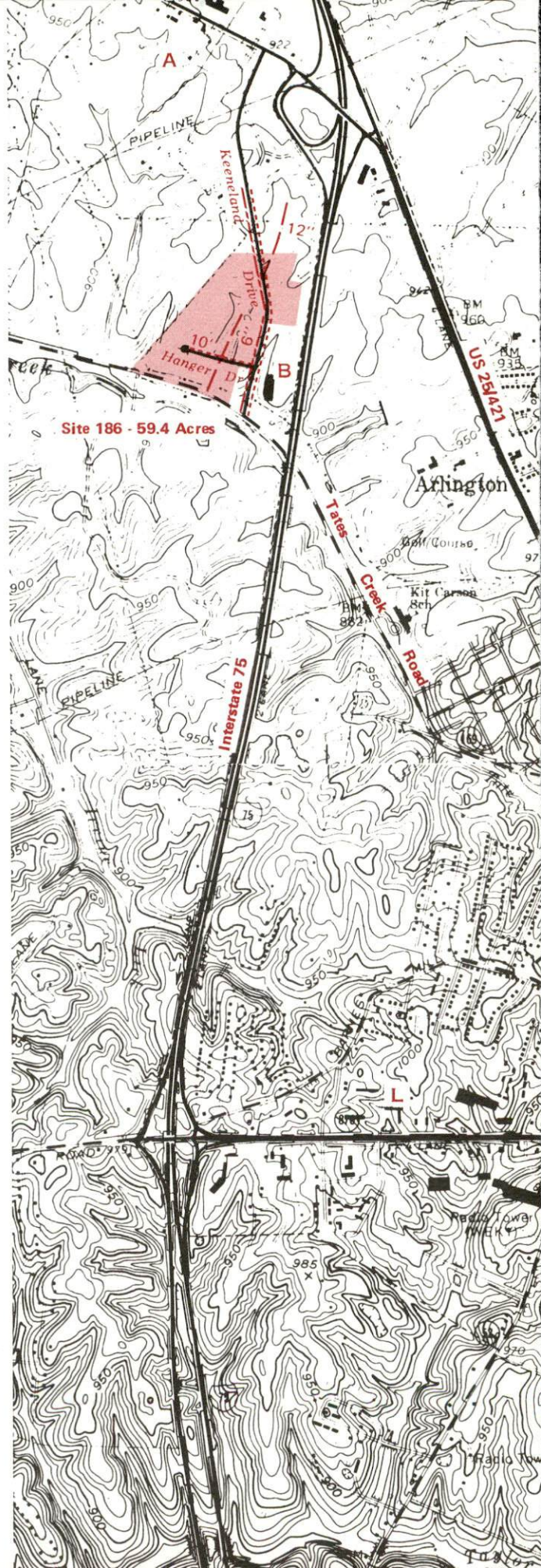
Photorevised - 1979

UTILITIES

-  Water Line
-  Sewer Line
-  Gas Line

Existing Industries

- A Sembol Industries
- B Plexus Corp.
- C North American Philips Lighting Corp.
- D National Metal Processing Inc.
- E Blue Grass Plating
- F Irvin Industries
- G Uncle Charles Sausage Co.
- H American Greeting
- I Rand McNally & Co.
- J Beatrice Grocery Products Inc.
- K Exide Company
- L Lectrodryer Division
Ajax Magnethermic Corp.
- M Available Industrial Bldg. (101,405 sq. ft.)
- N Sherwin Williams Company



RESOURCES FOR ECONOMIC DEVELOPMENT

RICHMOND, KENTUCKY

Prepared by
The Kentucky Department of Economic Development
Division of Research and Planning
in cooperation with
The Richmond Chamber of Commerce

1986

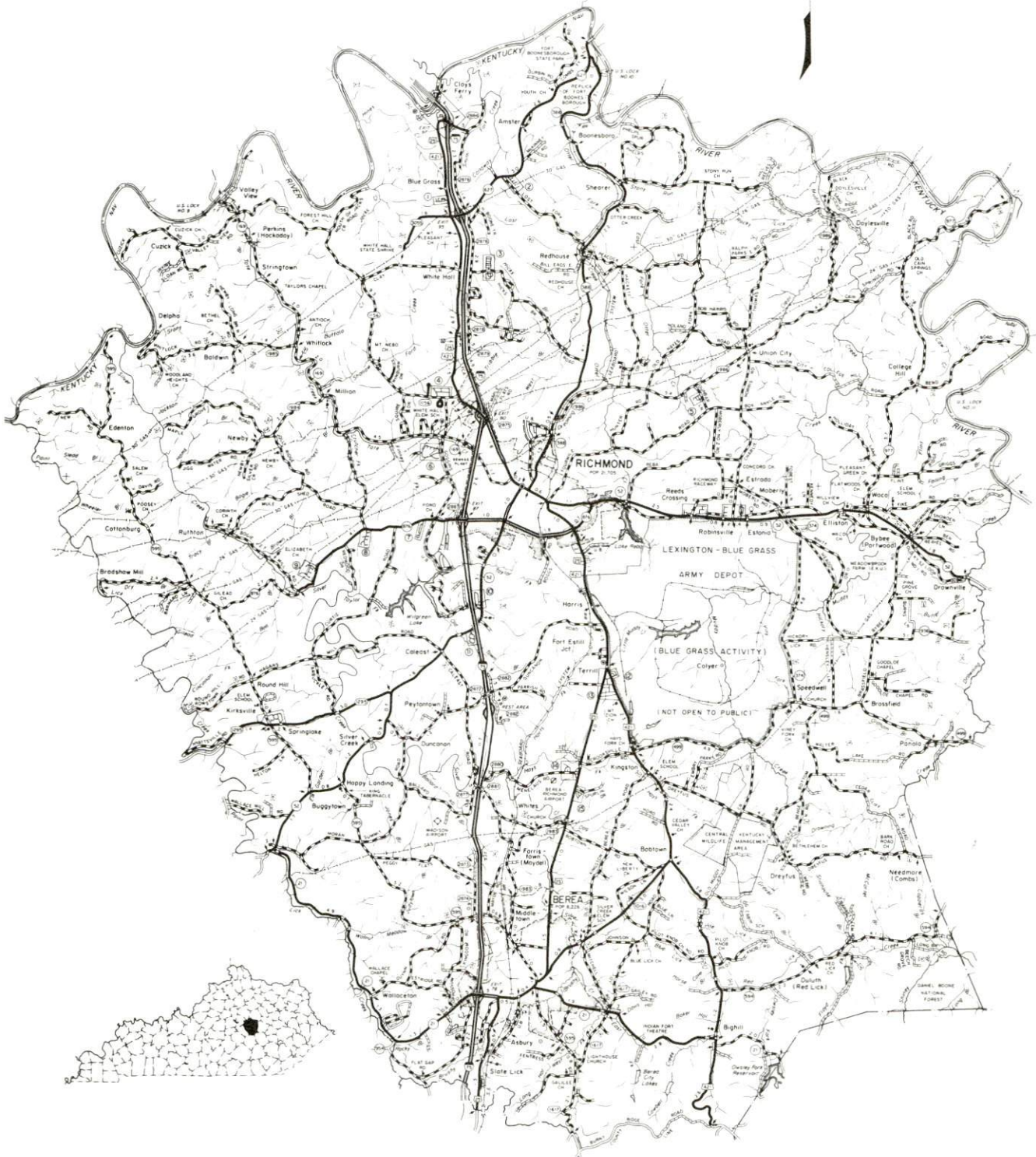
TABLE OF CONTENTS

<u>Chapter</u>	<u>Page</u>
INDUSTRIAL SITES	i
RICHMOND, KENTUCKY - A RESOURCE PROFILE	1
LABOR MARKET STATISTICS	2
Population	2
Population Projections	2
Labor Force Characteristics of Residents, 1985	3
Selected Components of Nonagricultural Employment, by Place of Work, 1985	3
Per Capita Personal Income	3
Estimated Male Labor Supply	4
Estimated Female Labor Supply	4
Average Weekly Wages By Industry, by Place of Work, 1985	5
EXISTING INDUSTRY	7
Major Richmond Manufacturing Firms, Their Products and Employment	7
Labor Organizations in Manufacturing Firms	9
Selected Industrial Services	10
TRANSPORTATION	11
Rail	11
Highways	11
Truck Service	11
Air	12
Air Express Service	13
Water	13
POWER AND FUEL	14
Electricity	14
Natural Gas	14
Other Fuels	15
WATER AND SEWERAGE	16
Public Water Supply	16
Sewerage	17

<u>Chapter</u>	<u>Page</u>
CLIMATE	18
LOCAL GOVERNMENT	19
Structure	19
Planning and Zoning	19
Local Fees and Licenses	19
State and Local Property Taxes	20
Safety	21
Police	21
Fire	21
Rescue Service	21
Refuse Collection and Disposal	21
EDUCATION	22
Public Schools	22
Nonpublic Schools	22
Area Colleges and Universities	23
Vocational Training	24
HEALTH.....	26
Local Medical Personnel	26
Hospitals	26
Other Medical Facilities	26
Ambulance Service	26
OTHER LOCAL FACILITIES.....	27
Communications	27
Library Services	27
Religious Institutions	28
Financial Institutions	28
Hotels and Motels	28
RECREATION	29
COMMUNITY IMPROVEMENTS	32

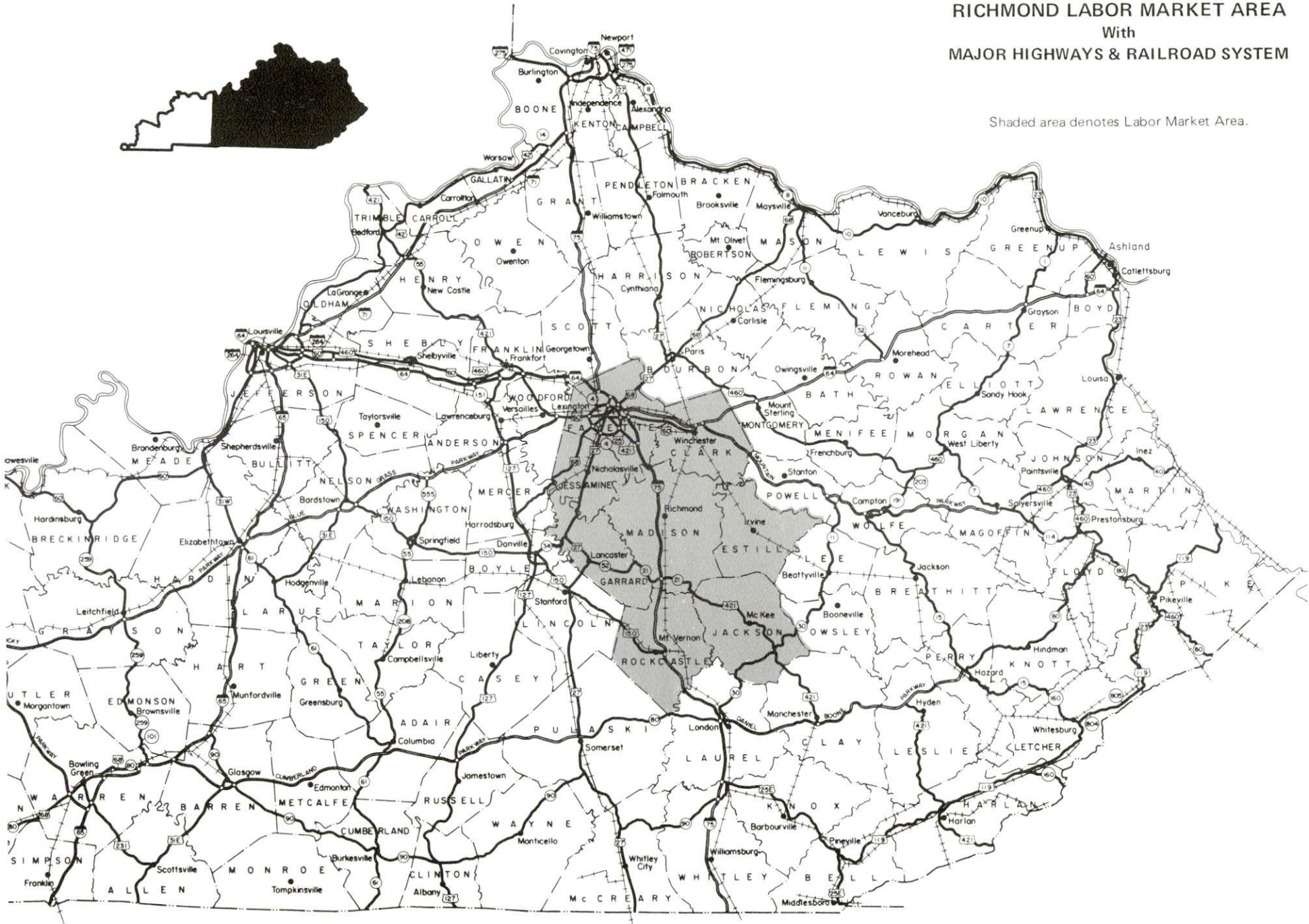
1986 EDITION
GENERAL HIGHWAY MAP
MADISON COUNTY
KENTUCKY

PREPARED BY THE
KENTUCKY TRANSPORTATION CABINET
DEPARTMENT OF HIGHWAYS
DIVISION OF PLANNING
IN COOPERATION WITH THE
U.S. DEPARTMENT OF TRANSPORTATION
FEDERAL HIGHWAY ADMINISTRATION



RICHMOND LABOR MARKET AREA
With
MAJOR HIGHWAYS & RAILROAD SYSTEM

Shaded area denotes Labor Market Area.



RICHMOND, KENTUCKY - A RESOURCE PROFILE

Richmond, the home of Eastern Kentucky University, is situated in central Kentucky's Blue Grass Region and is the county seat of Madison County. Richmond is located 25 miles southeast of Lexington, Kentucky; 107 miles south of Cincinnati, Ohio; and 147 miles north of Knoxville, Tennessee.

Madison County covers a land area of 443 square miles and had a 1984 estimated population 54,396 persons, with 21,564 of these persons residing within the city of Richmond.

The Economic Framework - The total number of Madison County residents employed in 1985 averaged 25,230. Manufacturing firms in the county reported 3,340 employees; wholesale and retail trade provided 5,260 jobs; 2,930 people were employed in service occupations; state and local government accounted for 3,650 employees; and contract construction firms provided 540 jobs.

Labor Supply - There is a current estimated labor supply of 19,000 men and 20,295 women available for industrial jobs in the labor market area. In addition, from 1986 through 1990, 14,140 young men and 13,255 young women in the area will become 18 years of age and potentially available for industrial jobs.

Transportation - CSX Transportation provides Richmond with main line rail freight service. Two interchanges of Interstate Highway 75 serve Richmond, as do U.S. Highways 25 and 421, and Kentucky Routes 52 and 1295. There are 25 common carrier trucking companies with authority to provide interstate and/or intrastate service to Richmond. The nearest scheduled commercial airline service is available at Lexington, Kentucky's, Bluegrass Airport, 30 miles northwest of Richmond. The Madison Airport, 6½ miles south of Richmond, has a paved 4,000-foot runway and offers charter service.

Power and Fuel - Kentucky Utilities Company, an electric power generation and transmission company, provides electricity to Richmond and portions of Madison County. Madison County also receives electricity from Blue Grass Rural Electric Cooperative Corporation and Clark Rural Electric Cooperative Corporation. Natural gas service to Richmond is provided by a municipal service. Delta Natural Gas Company, Inc., also serves portions of Richmond and Madison County. Three propane dealers and five fuel oil dealers are located at Richmond.

Education - The Richmond Independent School System and the Madison County School System provide primary and secondary public education to city and county residents. Two nonpublic schools also operate in Richmond. Eastern Kentucky University, a public institution of higher learning, is located at Richmond, and has an enrollment of over 12,000 students. Vocational training is available at Madison County Area Vocational Education Center at Richmond, and at Central Kentucky State Vocational-Technical School, 25 miles northwest of Richmond.

LABOR MARKET STATISTICS

The Richmond Labor Market Area includes Madison County and the adjoining Kentucky counties of Clark, Estill, Fayette, Garrard, Jackson, Jessamine and Rockcastle.

POPULATION

<u>Area</u>	<u>1984*</u>	<u>1980</u>	<u>1970</u>	<u>Percent Nonwhite</u>
				<u>1980</u>
Richmond	21,564	21,705	16,861	12.3
Labor Market Area	375,072	363,221	303,092	N/A
Madison County	54,396	53,352	42,730	6.8
Clark County	29,223	28,322	24,090	6.5
Estill County	14,991	14,495	12,752	0.2
Fayette County	210,150	204,165	174,323	14.5
Garrard County	11,292	10,853	9,457	5.5
Jackson County	12,473	11,996	10,005	0.1
Jessamine County	28,016	26,065	17,430	4.6
Rockcastle County	14,531	13,973	12,305	0.3

* Population estimates.

Note: The 1980 city counts of population by race are provisional.

Sources: U.S. Department of Commerce, Bureau of the Census, 1980 Census of Population and Housing, March 1981; 1980 Census of Population, Number of Inhabitants. University of Louisville, Urban Studies Center, Population Unit, October 1985; Kentucky Population Research Notes, Issue Number One, May 1985.

POPULATION PROJECTIONS

<u>Area</u>	<u>1990</u>	<u>1995</u>	<u>2000</u>	<u>2010</u>
Labor Market Area	395,166	409,608	420,765	436,092
Madison County	54,156	54,005	53,820	52,894
Clark County	31,081	32,565	33,731	35,330
Estill County	15,704	16,303	16,779	17,470
Fayette County	223,311	232,104	238,725	247,882
Garrard County	11,849	12,252	12,543	12,899
Jackson County	12,882	13,246	13,570	14,052
Jessamine County	31,085	33,572	35,699	39,306
Rockcastle County	15,098	15,561	15,898	16,259

Source: University of Louisville, Urban Studies Center, Population Research Unit, How Many Kentuckians: Population Forecasts, 1980-2020, the 1986 Edition, Spring 1986.

LABOR FORCE CHARACTERISTICS OF RESIDENTS, 1985

	<u>Madison County</u>	<u>Labor Market Area</u>
Civilian Labor Force	26,976	194,275
Employment	25,229	181,987
Unemployment	1,747	12,288
Rate of Unemployment (%)	6.5	6.3

Source: Kentucky Cabinet for Human Resources, Kentucky Labor Force Estimates, Annual Averages, 1985.

SELECTED COMPONENTS OF NONAGRICULTURAL EMPLOYMENT,
BY PLACE OF WORK, 1985

	<u>Madison County</u>	<u>Labor Market Area</u>
All Industries (total)	16,640	156,552
Manufacturing	3,344	28,236
Wholesale & Retail Trade	5,263	40,829
Services	2,932	31,990
State/Local Government	3,647	25,826
Contract Construction	540	8,591

Note: Excludes domestic workers, railway workers, certain nonprofit corporations, majority of federal government workers, and self-employed workers.

Source: Kentucky Cabinet for Human Resources, Average Monthly Workers Covered by Kentucky Unemployment Insurance Law, 1985.

PER CAPITA PERSONAL INCOME

<u>Area</u>	<u>1980</u>	<u>1984</u>	<u>Percent Change</u>
Madison County	\$ 6,246	\$ 8,782	40.6
Labor Market Area Range	\$3,933 - 9,977	\$5,548 - 14,421	N/A
Kentucky	7,644	10,232	33.9
U. S.	9,494	12,772	34.5

Sources: U.S. Department of Commerce, Bureau of Economic Analysis. Kentucky Economic Information System, June 1986.

ESTIMATED MALE LABOR SUPPLY
RICHMOND LABOR MARKET AREA

Area	Current			Future	
	Total Male	Unemployed	Under-employed	Not in Labor Force	
				Future Becoming 18 years of age 1986 thru 1990	
Labor Market					
Area*	19,000	7,175	10,291	1,534	14,137
Madison	2,717	903	1,814	0	1,919
Clark	1,129	632	497	0	1,296
Estill	1,513	483	408	622	699
Fayette	8,904	3,229	5,675	0	7,443
Garrard	905	353	285	267	429
Jackson	1,408	522	353	533	594
Jessamine	1,433	549	884	0	1,082
Rockcastle	991	504	375	112	675

ESTIMATED FEMALE LABOR SUPPLY
RICHMOND LABOR MARKET AREA

Area	Current			Future	
	Total Female	Unemployed	Under-employed	Not in Labor Force	
					Future Becoming 18 years of age 1986 thru 1990
Labor Market					
Area*	20,295	5,113	11,700	3,482	13,255
Madison	3,277	844	2,433	0	1,814
Clark	1,275	639	636	0	1,131
Estill	1,600	223	295	1,082	629
Fayette	9,140	2,375	6,765	0	7,136
Garrard	1,009	223	196	590	373
Jackson	1,498	191	173	1,134	518
Jessamine	1,351	330	1,021	0	1,069
Rockcastle	1,145	288	181	676	585

* Additional workers may be drawn from other nearby counties.

Note: Unemployed - persons unemployed and actively seeking work;
Underemployed - persons employed but working only 14 to 26 weeks per year;
Not in Labor Force - represents the number of persons who would enter the labor force if suitable employment were available (based on the assumption that persons in Kentucky would like to participate in the labor force in the same proportion that they do nationally).

Sources: Kentucky Cabinet for Human Resources, Kentucky Labor Supply Estimates by County, 1985. Kentucky Department of Economic Development, Future Labor Supply Becoming 18 Years of Age, 1986 thru 1990.

AVERAGE WEEKLY WAGES BY INDUSTRY,
BY PLACE OF WORK, 1985

	<u>Madison County</u>	<u>Clark County</u>	<u>Estill County</u>	<u>Fayette County</u>
All Industries	\$271.60	\$318.58	\$253.94	\$334.95
Mining & Quarrying	*	*	411.19	733.11
Contract Construction	274.23	344.07	117.95	339.93
Manufacturing	390.48	399.16	*	533.18
Transportation, Communications & Public Utilities	295.76	508.00	324.01	401.22
Wholesale & Retail Trade	178.76	197.95	176.37	224.06
Finance, Insurance & Real Estate	308.09	294.13	244.52	351.92
Services	233.50	211.14	166.26	285.59
State/Local Government	322.16	280.77	276.29	356.53
Other	153.48	116.39	*	286.06
	<u>Garrard County</u>	<u>Jackson County</u>	<u>Jessamine County</u>	<u>Rockcastle County</u>
All Industries	\$205.20	\$244.51	\$262.49	\$196.01
Mining & Quarrying	*	330.56	*	382.98
Contract Construction	247.69	228.76	290.82	150.58
Manufacturing	204.82	187.96	321.75	187.39
Transportation, Communications & Public Utilities	328.36	311.93	320.03	237.30
Wholesale & Retail Trade	137.67	181.11	219.60	150.98
Finance, Insurance & Real Estate	275.51	*	248.61	209.88
Services	212.48	211.72	208.05	189.64
State/Local Government	220.87	243.71	232.48	245.70
Other	161.46	*	257.10	*

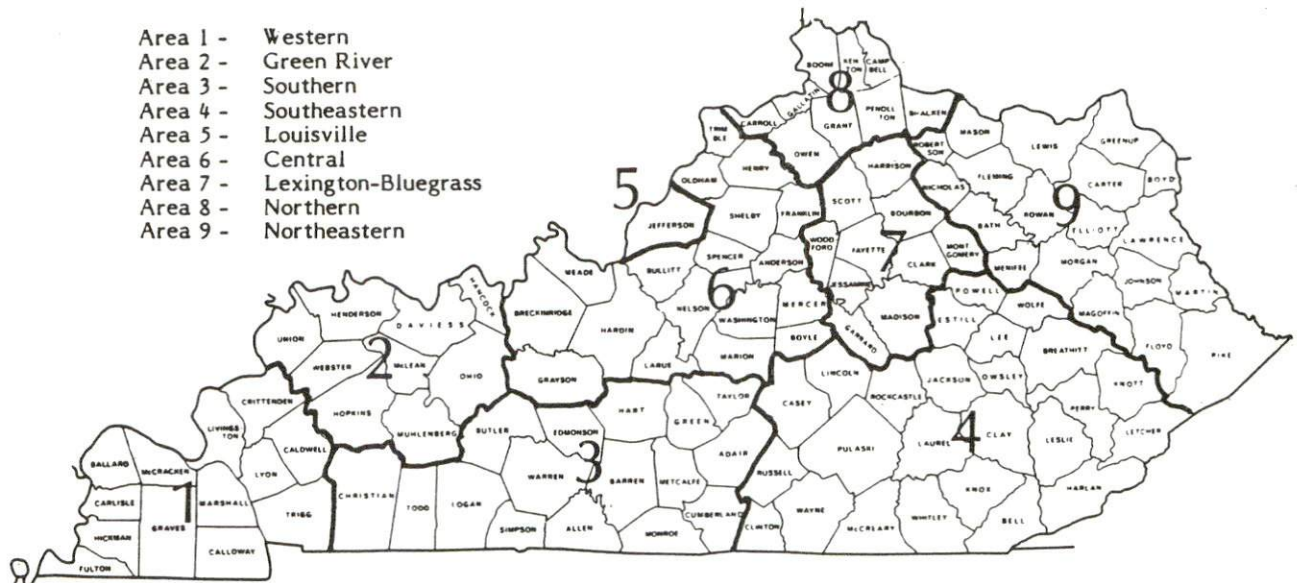
* Not disclosed.

Note: The average weekly wage for each category includes the salaries and wages of all persons working for that type business. For example, the manufacturing category includes both production workers and administrative personnel. Excludes domestic workers, railway workers, certain nonprofit corporations, majority of federal government workers, and self-employed workers.

Source: Kentucky Cabinet for Human Resources, Average Weekly Wages of Workers Covered by Kentucky Unemployment Insurance Law, 1985.

Occupational wage rates for specific industries are usually not available to most government agencies, and wage data furnished to state employment agencies by individual industrial employers are protected from disclosure by federal law. The most reliable up-to-date wage information can be obtained by direct contact with local employers.

Associated Industries of Kentucky, a voluntary organization of Kentucky businesses, regularly collects occupational wage rates and fringe benefits data from participating member firms. Data are compiled for over 127 clearly defined office, production, and service occupations. Tabulations are published for nine geographical areas of Kentucky, as shown on the map below. It should be noted that the data may be weighted by the preponderance of firms in the larger cities and may be somewhat higher than the rates paid in the smaller communities. Data from these tabulations are available, upon request, from the Kentucky Department of Economic Development, Frankfort, Kentucky 40601.



Associated Industries of Kentucky Area Wage Surveys

EXISTING INDUSTRY

MAJOR RICHMOND MANUFACTURING FIRMS, THEIR PRODUCTS AND EMPLOYMENT*

<u>Firm (Establishment date)</u>	<u>Product</u>	<u>Employment</u>			<u>Labor Unions</u>
		<u>Total</u>	<u>Male</u>	<u>Female</u>	
Ajax Magnethermic Corporation (1972)	Induction melting & heating equipment, industrial dryer equipment	109	92	17	
B & H Tool Company, Inc. (1984)	Dies, jigs (wire EDM), special machinery, machine design and building	28	26	2	
Blue Grass Plating (1969)	Electroplating and related services	27	25	2	
Concrete Materials Corporation (1949)	Septic tanks, manholes, ready-mixed concrete	36	28	8	
Continental Metal Specialty, Inc. (1969)	Metal stampings, tools, dies, office products	210	--	--	
Electronic Assembly, Inc. (1985)	Electronic sub-assemblies	50	--	--	
Exide Company (1976)	Storage batteries	205	--	--	
Irvin Industries, Metal Stamping Divison (1961)	Metal stampings, automotive parts, appliance oven door hinges	150	70	80	Auto Workers**

(Continued)

<u>Firm (Establishment date)</u>	<u>Product</u>	<u>Employment</u>			<u>Labor Unions</u>
		<u>Total</u>	<u>Male</u>	<u>Female</u>	
Lectrodryer Division, Ajax Magnethermic Corporation (1972)	Industrial dryers, dehydration equipment	45	31	14	
National Metal Processing, Inc. (1968)	Commercial and laser heat- treating, laser welding	32	29	3	Electronic Workers, IUE**
North American Philips Lighting Corporation (1948)	Miniature electric light bulbs, halogen light sources	430	--	--	Electrical Workers, IBEW**
The Okonite Company (1968)	Insulated cable	250	241	9	Electrical Workers, IBEW**
Rand McNally & Company (1982)	Maps and books, globe manufacture	113	--	--	
The Richmond Register, A Thomson Group Newspaper (1917)	Newspapers, offset printing	48	25	23	
Sembol Systems (1978)	Electro- mechanical assemblies, machine shop	45	5	40	
Sherwin Williams Company (1974)	Coatings	214	167	47	

(Continued)

<u>Firm (Establishment date)</u>	<u>Product</u>	<u>Employment</u>			<u>Labor Unions</u>
		<u>Total</u>	<u>Male</u>	<u>Female</u>	
Uncle Charlie's Sausage Company (1957)	Sausage, meat processing, ground beef	59	50	9	

* Firms with 25 or more employees.

** See Labor Organizations below.

Sources: Kentucky Department of Economic Development, 1986 Kentucky Directory of Manufacturers; Division of Research and Planning; Richmond Chamber of Commerce.

LABOR ORGANIZATIONS IN MANUFACTURING FIRMS

<u>Union</u>	<u>Representing workers at:</u>
International Brotherhood of Electrical Workers, AFL-CIO	North American Philips Lighting Corporation; The Okonite Company
International Union of Electronic, Electrical, Technical, Salaried and Machine Workers, AFL-CIO	National Metal Processing, Inc.
International Union, United Automobile, Aerospace and Agricultural Implement Workers of America	Irvin Industries, Metal Stamping Division

SELECTED INDUSTRIAL SERVICES

<u>Types of Services</u>	<u>Location</u>	<u>Mileage from Richmond</u>
Custom Plastics Producers	Berea	12
	Irvine	21
	Lexington	25
Electric Motor Repair	Richmond	-
Grinding, Precision & Tool	Richmond	-
Heat Treating Facilities	Richmond	-
Industrial Equipment & Supplies	Richmond	-
Industrial Gases	Lexington	25
Industrial Waste Removal	Richmond	-
Machine Shops, Tool & Die	Richmond	-
Metal Finishers	Richmond	-
Metal Service Centers	Richmond	-
Millwrights	Lexington	25
Public Warehouse Facilities	Lexington	25

Sources: Kentucky Department of Economic Development, Kentucky Directory of Selected Industrial Services, 1985; Division of Research and Planning.

TRANSPORTATION

Rail

Line serving **Richmond** - CSX Transportation

Services - Main line; freights stop as needed; two northbound and two southbound through freights daily; switching services; team track space for 10 cars. The nearest piggyback facilities are maintained by the Southern Railway System at Danville, 43 miles southwest of Richmond.

For details on routing, schedules, rates, and services contact:

Manager of Industrial Development
CSX Transportation
P.O. Box 2157
Louisville, Kentucky 40201
(502) 587-5228

Highways

Interstate Highway 75, U.S. Highways 25 and 421, and Kentucky Routes 52 and 1295 are all "AAA"-rated (80,000-pound gross load limit) trucking highways serving Richmond. Interstate 75 has interchanges 2 miles northwest of the city and 2 miles southwest of the city. Interstate 75 provides direct access to Interstate 64, 23 miles north of Richmond near Lexington. Kentucky Route 876 also serves the city, forming a four-lane bypass around Richmond's south side.

A new interchange of Interstate 75 is planned at Kentucky 595, south of Richmond. The new interchange will provide improved access to the Madison Airport.

Truck Service

ABF Freight System, Inc.*	Duff Truck Line, Inc.*
ANR Freight System, Inc.**	General Highway Express, Inc.**
ARA/Smith's**	Lawrenceburg Transfer Company*
American Freight Systems, Inc.**	Manning Motor Express, Inc.*
Bailey's Express, Inc.*	Middlewest Freightways, Inc.*
Bestway Express, Inc.**	The O.K. Trucking Company*
Bishop Motor Express*	Overnite Transportation Company*
CCC Highway, Inc.*	Owenton Express, Inc.*
CW Transport, Inc.*	Preston Trucking Company, Inc.*
Carolina Freight Carriers Corporation*	Roadway Express, Inc.*
Central Transport, Inc.**	Ryder/P-I-E Nationwide, Inc.**
Consolidated Freightways Corporation of Delaware*	Suburban Motor Freight, Inc.*
	Transcon Lines*

* Interstate and intrastate service.

** Interstate service only.

Source: American Motor Carrier Directory, Spring 1986.

HIGHWAY MILES AND TRUCK TRANSIT TIME IN DAYS FROM
RICHMOND, KENTUCKY, TO SELECTED MARKET CENTERS

City	Highway Miles	Delivery		City	Highway Miles	Delivery	
		Time TL				Time TL	
Atlanta, Ga.	340	1		Los Angeles, Ca.	2,205	5	
Baltimore, Md.	557	2		Louisville, Ky.	102	1	
Birmingham, Ala.	401	2		Nashville, Tenn.	235	1	
Chicago, Ill.	377	1		New Orleans, La.	743	2	
Cincinnati, Ohio	107	1		New York, N. Y.	728	-	
Cleveland, Ohio	342	1		Pittsburgh, Pa.	368	2	
Detroit, Mich.	362	1		St. Louis, Mo.	360	2	
Knoxville, Tenn.	147	1					

Note: Mileage computations are via the best interstate or primary highways, not necessarily the most direct route of travel.

Sources: Rand McNally Road Atlas, 1979. Official Kentucky Mileage Map, 1985.
Delivery time - Overnite Transportation Company, Lexington, Kentucky.

Air

Local

Location: Madison Airport*
 Runways: 6½ miles south of Richmond
 Length: 1 paved
 Traffic: 4,000 feet
 Control: Lighted wind cone
 Lighting: Runway, taxiway, beacon, VASI, REIL, MIRL
 Services: 100LL and jet-A fuel; major A & P repairs; tie-down; hangar
 with lobby, offices, and maintenance shop; flight
 instruction; plane rental; charter; car rental; parking

Air Freight Service: Chartered air freight services must be arranged

* Construction of a new interchange of Interstate 75 at Kentucky 595 near the airport is planned. The new interchange will provide direct access to the Madison Airport.

Nearest Scheduled Commercial Airline Service

Location: Bluegrass Airport
5 miles west of Lexington, Kentucky;
30 miles northwest of Richmond

Runways: 2 paved
Length: 7,000 feet; 3,500 feet

Traffic Control: Tower

Lighting: Approach lighting system, beacon, runways and
obstructions lighted, VASI

Services: Delta, Piedmont, United, USAir, Allegheny Commuter,
Piedmont Commuter, Eastern Metro, Comair, American
Eagle; fuel - 100LL and jet-A; hangars, tie-downs; major
A & P repairs; major Avionics repairs; APU, charter, flight
instruction, oxygen, plane rentals, survival equipment; taxi,
limousine, car rentals, courtesy car, weather information;
restaurant, snack bar

Air Freight Service: Air freight terminal

Air Express Service

Several major companies offer air express services in Kentucky. These companies provide a quick means of shipping small to medium-sized packages expeditiously.

Water

The Kentucky River forms the northern boundary of Madison County. The nearest navigable point on the Kentucky River is the beginning of a 6-foot navigation channel at Frankfort, Kentucky, 52 miles northwest of Richmond.

POWER AND FUEL

Electricity

Company serving **Richmond and portions of central Madison County** - Kentucky Utilities Company

Source of power - Kentucky Utilities Company

For industrial rates contact:

Industrial Development Department
Kentucky Utilities Company
One Quality Street
Lexington, Kentucky 40507
(606) 255-1461

Company serving **northwestern and southern portions of Madison County** - Blue Grass Rural Electric Cooperative Corporation

Source of power - East Kentucky Power Cooperative

For industrial rates contact:

Industrial Development Division
East Kentucky Power Cooperative
P.O. Box 707
Winchester, Kentucky 40391
(606) 744-4812

Company serving **northeastern portion of Madison County** - Clark Rural Electric Cooperative Corporation

Source of power - East Kentucky Power Cooperative

For industrial rates contact:

Industrial Development Division
East Kentucky Power Cooperative
P.O. Box 707
Winchester, Kentucky 40391
(606) 744-4812

Natural Gas

Company serving **Richmond** - Richmond Water, Gas & Sewerage Works

Source of supply - Columbia Gas Transmission Corporation

Size of transmission mains - 6-inch (supplier); 6 to 8 inches (distributor)

Distribution mains - 2 to 8 inches

Distribution pressure - 20 psi to 30 psi

Btu content - 1,029 per cubic foot

Specific gravity - 0.581 to 0.592

For rates and supplies contact:

Richmond Water, Gas & Sewerage Works
300 Hallie Irvine Street
P. O. Box 700
Richmond, Kentucky 40475
(606) 623-2323

Company serving **portions of Richmond and Madison County** - Delta Natural Gas Company, Inc.

Source of supply - Columbia Gas Transmission Corporation* and Tennessee Gas Pipeline Company

Size of transmission mains - Columbia Gulf: 30-inch; Tennessee Gas: 24-inch; Delta Natural Gas: 4-inch

Distribution mains - 2 and 4 inches

Distribution pressure - 15 psi to 90 psi

Btu content - 1,040 per cubic foot

Specific gravity - 0.60

For rates and supplies contact:

Manager of Marketing and
Public Relations
Delta Natural Gas Company, Inc.
Route 1, Box 30 A
Winchester, Kentucky 40391
(606) 744-6171

Other Fuels

Propane

Buckeye Gas Products Company
Edwards Avenue, P. O. Box 741
Richmond, Kentucky 40475

Southern States Cooperative, Inc.
Irvine Road, P. O. Box 916
Richmond, Kentucky 40475

Crawford Gas and Appliances
Big Hill Avenue, P. O. Box 833
Richmond, Kentucky 40475

Fuel oils

Distillate fuel oil -

Congleton's Sunoco
Route 3
Richmond, Kentucky 40475

Red Hed Oil Company, Inc.
Irvine Road
Richmond, Kentucky 40475

Grimes and Curry
Route 2, Quality Drive
Richmond, Kentucky 40475

Chevron USA, Inc.
Boggs Lane
Richmond, Kentucky 40475

Jenkins Fuel Oil and Gas, Inc.
Route 2, Berea Road
Richmond, Kentucky 40475

Residual fuel oil - Arrangements must be made with the refinery.

Low sulphur content coal - Available in Kentucky.

* Delta Natural Gas Company has a contract with Columbia Gas Transmission Corporation; however, gas is supplied through a Columbia Gulf Transmission Company transmission main.

WATER AND SEWERAGE

Public Water Supply

Company serving **Richmond** - Richmond Water, Gas & Sewerage Works*
300 Hallie Irvine Street, P. O. Box 700
Richmond, Kentucky 40475
(606) 623-2323

Source - Kentucky River
Treatment plant capacity - 7,500,000 gallons per day
Average daily consumption - 4,200,000 gallons
Peak daily consumption - 6,000,000 gallons
Treatment processes - Rapid mix, coagulation, flocculation, sedimentation,
filtration, chlorination, fluoridation, chlorine dioxide and chloramines
Storage capacity - 9,300,000 gallons (including 900,000 gallons in clear well)
Size lines - 4 to 24 inches
Water pressure - 50 psi to 60 psi

MONTHLY WATER RATES

First	300 cubic feet	\$5.65 (Minimum)
Next	400 cubic feet	1.65 per 100 cubic feet
Next	5,000 cubic feet	1.50 per 100 cubic feet
Next	5,000 cubic feet	1.25 per 100 cubic feet
All over	10,700 cubic feet	.94 per 100 cubic feet

Tap-on charge: None

Name of water district - Kingston-Terrill Water District**
P. O. Box 5204
Richmond, Kentucky 40475
(606) 623-7723

Area served - South central Madison County
Date when water district began operating - 1965
Source of supply of treated water - Richmond Water, Gas & Sewerage Works
Average amount of water used in a 24-hour period - 400,000 gallons
Peak amount of water used in a 24-hour period - 500,000 gallons
Storage capacity - 100,000 gallons
Size lines - 8, 6, 4 and 3 inches
Water pressure - 50 psi to 100 psi

(Continued)

* The city of Richmond completed an \$8,500,000 expansion of its water treatment plant in 1986. The plant's capacity was increased, and a new raw water transmission main was installed from the Kentucky River to Richmond.

** Tentative plans are being made to construct a 300,000-gallon water storage tank when funding becomes available.

MONTHLY WATER RATES

First	200 cubic feet	\$6.06 (Minimum)
Next	300 cubic feet	2.68 per 100 cubic feet
Next	300 cubic feet	1.93 per 100 cubic feet
All over	800 cubic feet	1.18 per 100 cubic feet

Tap-on charge:

5/8- x 3/4-inch meter - \$375.00

Larger meters - Cost of labor and materials, plus 10 percent

Sewerage

Company serving **Richmond** - Richmond Water, Gas & Sewerage Works
300 Hallie Irvine Street, P. O. Box 700
Richmond, Kentucky 40475
(606) 623-2323

Design capacity - 6,640,000 gallons per day (total for two treatment plants)

Average daily flow - 4,300,000 gallons

Type of treatment - Advanced secondary

Treatment processes - Flow equalization, screening, grit removal, primary sedimentation, rotating biological contactors, secondary sedimentation, chlorination, anaerobic digester, sludge drying beds, filter press, post aeration

Treated effluent discharged into - Tates Creek, Dreaming Creek

Size of sanitary mains - 4 inches to 36 inches

Monthly rates - Based on water usage:

First	300 cubic feet	\$4.50 (Minimum)
Next	400 cubic feet	1.30 per 100 cubic feet
Next	5,000 cubic feet	1.15 per 100 cubic feet
Next	5,000 cubic feet	1.00 per 100 cubic feet
All over	10,700 cubic feet	.87 per 100 cubic feet

A 100 percent surcharge is added to the above rates for customers outside the city of Richmond.

Surcharges for industrial wastes exceeding specific strengths:

BOD -- \$0.065 per pound in excess of 225 mg/l

TSS -- \$0.083 per pound in excess of 265 mg/l

NH₃-N -- \$0.293 per pound in excess of 25 mg/l

Tap-on charge:

Most residential and commercial units - \$0.20 per square foot of building size

Industrial units - \$500, plus \$0.02 per square foot of building size

CLIMATE

Madison County

Temperature

Normal (30-year record)	54.90 degrees
Average annual 1985	54.60 degrees
Record highest, August 1983 (41-year record)	103.00 degrees
Record lowest, January 1963 (41-year record)	-21.00 degrees
Normal heating degree days (30-year record) (Heating degree day totals are the sums of negative departures of average daily temperatures from 65 degrees F.)	4,814

Precipitation

Normal (30-year record)	45.68 inches
Mean annual snowfall (30-year record)	16.50 inches
Total precipitation 1985	37.75 inches
Mean number days precipitation (.01 inch or more) (41-year record)	130.70
Mean number days thunderstorms (41-year record)	45.80

Prevailing Winds (through 1963)

South

Relative Humidity

1 a.m.	77 percent (21-year record)
7 a.m.	82 percent (22-year record)
1 p.m.	60 percent (22-year record)
7 p.m.	64 percent (22-year record)

Source: U.S. Department of Commerce, Environmental Science Services Administration, Climatological Data, 1985. Station of record: Lexington, Kentucky.

LOCAL GOVERNMENT

Structure

Richmond is governed by a mayor and four commissioners. Madison County is governed by a county judge/executive and four magistrates.

Planning and Zoning

City agency - Planning Commission of Richmond

Zoning enforced - Within the corporate limits of Richmond

Subdivision regulations enforced - Within the corporate limits of Richmond and 5 miles beyond

Local codes enforced - Building and housing

Mandatory state codes enforced - Kentucky Plumbing Code, National Electric Code, Kentucky Boiler Regulations and Standards, Kentucky Building Code (modeled after BOCA code)

Local Fees and Licenses

Madison County began levying a one percent tax on wages and net profits of businesses on June 1, 1986. The tax levy could be halted if voters do not approve it in the November 1986 election. The city of Richmond levies a one and one-half percent tax on wages and net profits of businesses located within its corporate limits. Taxpayers located within the city are subject to both city and county taxes.

A 3 percent tax is levied on utilities receipts for schools in Madison County. Tax is paid by all consumers of utilities as an add-on to the utilities bills. Exempted are receipts from utilities services that are resold and the receipts from the sale of energy or energy producing fuels that exceed 3 percent of the cost of production in manufacturing, processing, mining or refining.

State and Local Property Taxes

All property in Kentucky, except items exempted by the state constitution, is taxed by the state. Property which also may be taxed by local jurisdictions includes land and buildings, finished goods inventories, automobiles, trucks, office furniture and office equipment. Local taxing jurisdictions in Kentucky include counties, cities, and school districts.

All property in Kentucky is assessed at 100 percent of fair cash value.

COMBINED STATE AND LOCAL RATES PER \$100 VALUATION, 1985

	<u>Richmond and Richmond School District</u>	<u>Richmond and Madison County School District</u>	<u>Unincorporated Madison County</u>
Land and Buildings	\$1.002	\$0.760	\$0.491
Manufacturing Machinery	0.150	0.150	0.150
Pollution Control Equipment	0.150	0.150	0.150
Inventories			
Raw materials	0.001*	0.001*	0.001*
Goods in Process	0.001*	0.001*	0.001*
Finished Goods	0.835*	0.566*	0.279*
Automobiles and Trucks	1.340	1.015	0.728
Other Tangible Personal Property	1.284	1.015	0.728
Intangibles (Accounts receivable, money in hand, stock, notes, bonds)	0.250**	0.250**	0.250**
Goods Stored in Public Warehouses in Transit Status	0.001*	0.001*	0.001*
Private Leaseholds in Industrial Revenue Bond Financed Facilities	0.015	0.015	0.015

Two special taxing districts in Madison County levy property taxes on real estate in their district boundaries at rates of \$0.10 per \$100 valuation and \$0.003 per acre, respectively.

* Includes 1986 state rate.

** Accounts receivable are taxed at 85 percent of face value, for an effective rate of \$0.2125 per \$100 valuation.

Safety

Police	Richmond	Madison County
Total staff	44	8
Radio-patrol cars	16	5
Fire*		
Insurance Services Office, Public Protection Classification	3	**
Full-time staff	49	--
Volunteers	12	60
Rescue Service		

Rescue service is provided by Madison County Rescue Squad, whose 44-member staff includes five paramedics and seven emergency medical technicians.

Refuse Collection and Disposal

The city of Richmond provides municipal refuse collection and disposal service to residential and commercial customers in the city. Industrial customers and residents of unincorporated Madison County must contract with private haulers for refuse collection. Customers may dispose of refuse at the city-owned landfill for a fee.

* Includes copyrighted material of ISO Commercial Risk Services, Inc., with its permission.

** Property within the Berea Fire District that is located 3 road miles or less from a fire station has a class 6 rating if within 1,000 feet of a fire hydrant, and a class 9 rating if more than 1,000 feet from a fire hydrant. Property within the Madison County Fire District or the White Hall Fire District has a class 9 rating if within 5 road miles of a fire station. The remainder of unincorporated Madison County has a class 10 rating.

EDUCATION

Public Schools

	Richmond Independent	Madison County
Total Enrollment (Spring, 1986)	922	6,884
Kindergarten	92	505
Elementary	468	3,310
Junior High	151	-
Middle School	-	1,121
High School	211	1,948
 Pupil-Teacher Ratio (1984-85)	 15-1	 20-1
 Percent High School Graduates to College (1984-85)	 37.8	 68.2
 Expenditures Per Pupil (1984-85)	 \$2,325.22	 \$1,657.31

Nonpublic Schools

<u>School</u>	<u>Enrollment</u>	<u>Grades</u>
St. Mark Elementary	150	K-8
Model Laboratory*	532	K-12

* The Model Laboratory School of Eastern Kentucky University is accredited by the Southern Association of Colleges and Schools. Model Laboratory enrollment is included in the enrollment figures for the Madison County School System.

Area Colleges and Universities

<u>Name</u>	<u>Location (Miles distant)</u>	<u>Enrollment (Fall, 1985)</u>	<u>Highest Degree Conferred</u>
Eastern Kentucky University	Richmond	12,229	Masters, Specialist*
Berea College	Berea (12)	1,566	Baccalaureate
Lexington Community College	Lexington (25)	2,538	Associate
Transylvania University	Lexington (25)	856	Baccalaureate**
University of Kentucky	Lexington (25)	20,895	Doctorate, M.D., D.M.D., J.D.
Asbury College	Wilmore (34)	980	Baccalaureate
Georgetown College	Georgetown (39)	1,315	Masters
Midway College	Midway (41)	314	Associate
Centre College	Danville (43)	804	Baccalaureate

Eastern Kentucky University

Eastern Kentucky University is a regional, public institution of higher education located in Richmond. The University offers general and liberal arts programs, pre-professional and professional training in education and various other fields at both the undergraduate and graduate levels. Eastern also offers continuing education and special programs to meet the varied needs and interests of the area.

* Joint doctoral degree programs are offered in cooperation with the University of Kentucky, Lexington. The degrees are issued by the University of Kentucky.

** Courses in a masters degree program are taught on the Transylvania campus by faculty members of Xavier University of Cincinnati. The degree is issued by Xavier University.

Vocational Training

The Bluegrass State Skills Corporation, an independent public corporation created and funded by the Kentucky General Assembly, provides programs of skills training to meet the needs of business and industry from entry level to advanced training, and from upgrading present employees to retraining experienced workers.

The Bluegrass State Skills Corporation is the primary source for skills training assistance for a new or existing company. The Corporation works in partnership with other employment and job training resources and programs, as well as Kentucky's economic development activities, to package a program customized to meet the specific needs of a company.

Vocational training is available at both the state vocational-technical schools and the area vocational education centers. The state vocational-technical schools are post-secondary institutions. The area vocational education centers are designed to supplement the curriculum of high school students. Both the state vocational-technical schools and the area vocational education centers offer evening courses to enable working adults to upgrade current job skills.

Arrangements can be made to provide training in the specific production skills required by an industrial plant. Instruction may be conducted either in the vocational school or in the industrial plant, depending upon the desired arrangement and the availability of special equipment.

(Continued)

Nearest State School

Central Kentucky State Vocational-Technical School
Lexington, 25 miles distant

Academic Related Subjects

Language

Math

Technical Related Math

Business & Office

Accounting

Clerical

Secretarial

Consumer & Home Economics

Commercial Foods

Distributive Education

Retail Training-Merchandising/

Food Marketing

Hotel/Motel-Waiter/Waitress-

Housekeeping Services

Health & Personal Services Occupations

Cosmetology

Dental Assistant

Nurse's Aide

Practical Nursing

Surgical Technician

Ward Clerk

Medications Aide

Home Health Care

Geriatric

Industrial Education

Air Conditioning

Auto Body Repair

Auto Mechanics

Carpentry

Drafting (with CAD/CAM)

Electronics

Graphic Arts

Industrial Electricity

Machine Shop

Masonry

Welding

Learning Resource Center

GED

Public Service

E.M.T. Training

Fire Training

Cardiopulmonary Resuscitation

First Aid

Industrial Fire Brigade Training

Apprenticeship

Electrical

Tool & Die

Up-Grade Programs

Nearest Area Education Center

Madison County Area Vocational Education Center
Richmond

Business & Office

Accounting/Jr. Management

Clerical

Secretarial

Health & Personal Services Occupations

Health Services

Industrial Education

Auto Mechanics

Drafting

Machine Shop

Welding

Learning Resource Center

HEALTH

Local Medical Personnel

Physicians - 58
Dentists - 32

Hospitals

<u>General Hospital</u>	<u>Location</u>	<u>Beds</u>
Pattie A. Clay Hospital	Richmond	112

Medical staff - 41 doctors, 120 registered nurses, and 9 licensed practical nurses

Other Medical Facilities

Madison County Health Department (a public health facility)

Ambulance Service

Name - Madison County Ambulance Service
Staff - 18 full-time and 15 part-time emergency medical technicians; 4 paramedics

OTHER LOCAL FACILITIES

Communications

Telephone -	South Central Bell
Telegraph -	Western Union Toll-free number, 1-800-325-6000; counter service available
Newspaper - Daily and circulation -	Richmond Register - 8,640
Weekly and circulation -	Madison County Post - 11,550
Radio -	WCBR-AM; WMCQ-FM; WEKY-AM; WEKU-FM (Eastern Kentucky University)
Television - Airwave reception from -	Lexington, Kentucky
Cable service -	Centel Cable Television Company of Kentucky
Educational television -	The Kentucky Educational Television (K.E.T.) network is available statewide

Library Services

University library - John Grant Crabbe Library, Eastern Kentucky University
Size collection - 745,947 volumes
Circulation, 1984-85 - 238,410

Private library - The Richmond Women's Club operates a library in Richmond.
The library is open to the public three days per week.

Religious Institutions

Denominations -	A.M.E. Apostolic Assembly of God Baptist Catholic Christian Christian - Disciples of Christ Church of Christ Church of God Church of Jesus Christ of Latter Day Saints Church of Nazarene Episcopal Lutheran Jehovah's Witnesses Methodist Presbyterian Seventh-Day Adventist United Methodist
Nearest Synagogues -	Lexington, 25 miles northwest of Richmond
Congregations -	Adath Israel (reform) Ohavey Zion (traditional)

Financial Institutions

<u>Banks</u>	<u>Assets</u>	<u>Deposits</u>	<u>Statement Date</u>
Madison National Bank	\$ 89,728,501.11	\$ 72,412,860.08	6/20/86
Richmond Bank and Trust	46,540,773.00	42,095,137.00	6/21/86
State Financial Bancshares, Inc., and its subsidiary State Bank and Trust Company	139,884,559.00	121,591,971.00	12/31/85

<u>Savings and Loan Associations</u>	<u>Assets</u>	<u>Savings Accounts</u>	<u>Statement Date</u>
First Federal Savings and Loan Association of Richmond	\$ 86,276,752.33	\$ 81,570,382.86	12/31/85

Hotels and Motels

Total number - 13
Total rooms - 832

RECREATION

Local

The Richmond Parks and Recreation Department maintains and administers six park sites and a community center. These facilities include the Recreation and Tourism Center, historic Irvinton and the Irvine McDowell Park, Million Park, Camp Catalpa Environmental Park, Lake Reba Recreation Area, Dillingham Heights Neighborhood Playground, and the Highway 421-25 County Park. Located within these facilities are 10 ball fields, four tennis courts, two outdoor basketball courts, four-square courts, eight picnic shelters, five apparatus areas (with one specifically designed for the orthopedically handicapped), numerous outdoor picnic areas with tables and grills, a nature trail, horseshoe pits, green spaces, parking, restrooms, and concessions. The recreation center features a gymnasium, a kitchen, meeting rooms, a game room, a crafts room, locker rooms with shower facilities, and a large multipurpose room.

The department organizes a well-balanced recreation program offering participation in sports leagues and athletics, games, wellness and physical fitness programs, outdoor recreational activities, cultural arts programs, and social activities. Special interest classes and programs for special population groups, such as senior citizens and the handicapped, involve residents and visitors of all ages and backgrounds.

Special annual events in Richmond include the Madison County Fair, the Founders Day Fourth of July Celebration, the Pops in the Park concert (held at White Hall State Shrine), the Haunted Forest and Big Boo Bash held during the Halloween season, the Holiday Happening Arts and Crafts Fair, the Easter Egg Extravaganza, the Holiday Parade held during the Christmas season, the Pattie A. Clay Charity Ball, and the Richmond Junior Women's Club Junior Miss Pageant. A local children's theater group presents two performances annually.

Private recreational facilities include two country clubs offering golf and swimming, two indoor and two drive-in movie theaters, two bowling facilities, the Madison Fish and Game Club, a fishing lake, and several campgrounds.

Eastern Kentucky University, located at Richmond, is the center for a variety of educational, cultural, and recreational activities, including lectures, theatrical productions, art exhibits, ballets, concerts, and sporting events. The ECU campus also serves as a conference center for eastern and central Kentucky, hosting numerous groups and organizations throughout the year. Recreational facilities on the University campus include indoor and outdoor Olympic-size swimming pools, indoor and outdoor tennis courts, a 27-acre intramural sports area, racquetball courts, gymnasiums, a 6,500-seat basketball arena, and a 20,000-seat football complex. The University has been host to the Girls' State High School Basketball Tournament and the boys' and girls' state high school swimming meets.

Historical buildings in Richmond include the Greek Revival-style Madison County Courthouse, built in 1849-1850; Bronston Place and Brighton, homes built during the 1820's and 1830's in the traditional Federal style; Nay Coy's Home and Elmwood, designed in the late 1880's by Cincinnati architect des Jardin; and Irvinton, built in the 1820's and listed on the National Register of Historic Homes.

White Hall State Shrine, 8 miles north of Richmond, one of the grand estate houses of post-Civil War Kentucky, is the Italianate mansion of Cassius Marcellus Clay, the early abolitionist and politician. Kentucky handcrafts are sold in the White Hall gift shop, only a short walk from the mansion.

The spirit of Daniel Boone and his pioneers is reborn at **Fort Boonesborough State Park** in Boonesboro, 13 miles north of Richmond. In the re-created fort, pioneer crafts of the eighteenth century are demonstrated by using functioning antiques from the frontier era. Cabins are furnished as they would have been in the days of Boone and documentary films are presented which depict the struggle of the first Kentuckians to make the Kentucky wilderness a home. A gift shop within the fort offers for sale all the handcrafted items made at the fort. Other recreational facilities and activities of the park include the finest sand beach on the Kentucky River with a modern bathhouse and a modern camping area with 187 sites.

Area (Within 55 miles)

The Daniel Boone National Forest, approximately 22 miles east of Richmond, covers 640,000 acres of timberland in eastern Kentucky. It encompasses much of Kentucky's great beauty and provides a vacation paradise. There are scenic hiking trails, rivers and streams stocked with a variety of fish, hunting preserves, camping sites, and numerous other natural and historical attractions.

Lexington, 25 miles northwest of Richmond, offers a variety of cultural, sporting, and recreational activities. Thoroughbred and harness racing is presented at Keeneland Race Course and the Red Mile Harness Track during several meets each year. The University of Kentucky and Transylvania University offer a number of sporting events. The University of Kentucky basketball games are held at Rupp Arena, the world's largest basketball arena. Other attractions include Lexington Philharmonic concerts, Lexington Children's Theatre, and plays performed by Broadway touring companies, all held in the recently renovated Opera House.

Waveland State Shrine, 26 miles northwest of Richmond near Lexington, features an 1847 Greek Revival mansion depicting Kentucky lifestyles from the days of early settlers to the antebellum era of gentility and elegance as well as the Civil War and postwar periods. The shrine also includes the Kentucky Life Museum and a plantation village on ten acres with many shops and displays.

The Kentucky Horse Park, a park dedicated to horses and to man's love for horses, is located 33 miles northwest of Richmond near Lexington. The park, which contains more than 1,000 acres of Kentucky Bluegrass, features the International Museum of the Horse; the Man O'War Memorial; an antique carriage display; horseback and pony rides; walking farm tours; horse-drawn tours; a restaurant; a gift shop; and a campground area, which offers swimming, tennis, and planned activities. Numerous special events are held year-round and include various horse shows, steeplechasing, dressage, polo games, and rodeos.

Constitution Square State Shrine, 36 miles west of Richmond in Danville, is a reproduction of Kentucky's first courthouse square, including the original 1792 post office which was the first in the west.

William Whitley House State Shrine, 40 miles southwest of Richmond near Stanford, is the first brick house west of the Allegheny Mountains, built 1787-94. Whitley laid out Kentucky's first race track here and started U.S. counterclockwise racing. The facility provides picnic and playground areas in a ten-acre park.

Isaac Shelby State Shrine, 41 miles southwest of Richmond near Danville, is the burial site of Kentucky's first governor and one of the Commonwealth's foremost statesmen.

Herrington Lake, 42 miles west of Richmond near Danville and Harrodsburg, was developed by the Kentucky Utilities Company in 1925. Dix River Dam near Pleasant Hill is located on the 3,600-acre lake. Fishing, boating, and swimming can all be enjoyed on the lake. Camping and fishing facilities are available near Danville and Harrodsburg.

Old Fort Harrod State Park, 45 miles west of Richmond, is a 28-acre park in Harrodsburg that features a full-scale reproduction of the original Fort Harrod. The park also contains the log cabin where Abraham Lincoln's parents were wed, the Mansion Museum which houses mementos associated with the great periods of Kentucky history, a pioneer cemetery, and a federal monument dedicated to pioneers. The "Legend of Daniel Boone" and "Lincoln" are two excellent outdoor dramas which are performed at the Old Fort Amphitheater during the summer months.

Perryville Battlefield State Shrine, 49 miles west of Richmond near Perryville, is the site of the largest Civil War battle in Kentucky. A museum, a picnic area, and a playground are located on the grounds.

Frankfort, the capital of Kentucky, is 52 miles northwest of Richmond. Points of interest in Frankfort include the Capitol Building, a 34-foot floral clock, the Daniel Boone Monument, several museums, and old homes with their original furnishings. Frankfort is also the home of Kentucky State University which offers many cultural activities and sporting events.

Pleasant Hill, a restored Shaker Village located 52 miles west of Richmond, is a National Historic Landmark. Over 20 buildings and grounds have been restored to display unique Shaker skills in furniture making, crafts, and architecture. Dining rooms, lodging, craft shops, and seasonal festivals and plays are offered.

Natural Bridge State Resort Park near Slade, 54 miles east of Richmond, is located in the Daniel Boone National Forest where cliffs and stone arches fill the landscape. The rugged awesomeness of the great Natural Bridge is the main attraction. The park has a 35-room resort lodge with a dining room and gift shop, ten rustic cottages, and 95 camping sites. Other facilities include a lake, a swimming pool, picnic shelters and playgrounds, hiking trails, and a riding stable.

COMMUNITY IMPROVEMENTS

Recent

During 1984, 1985, and 1986, three companies announced plans to build new manufacturing facilities in Richmond. Also during that time, 12 manufacturing companies announced plans to expand their Richmond facilities.

Leadership Madison County, a community leadership development program, was formed in 1985.

Richmond received its fourth consecutive Kentucky Certified Cities award in 1985. The Kentucky Certified Cities Program is sponsored by the Kentucky Chamber of Commerce and each year recognizes those cities which demonstrate progress in economic and community development.

New classrooms were constructed at the Madison County School System's Silver Creek Elementary School during 1986. The Richmond Independent School System also completed an 85,000-square-foot building addition at Bellevue Elementary School during 1986.

The city of Richmond recently constructed a new police station and parking lot, and has installed new downtown lighting.

Pattie A. Clay Hospital recently added a new radiology section, which includes CAT scanning facilities. The hospital's laboratory was expanded, and renovations were completed in the physical therapy and maternity sections of the hospital.

Under Way

The Richmond Technology Park is under development. The 72-acre industrial park fronts on Interstate 75 and has all utilities.

An \$8,500,000 expansion of the Richmond water treatment and distribution system is scheduled for completion during 1986. The plant's treatment capacity is being increased from 6,000,000 gallons per day to 7,500,000 gallons per day. The project also includes installation of a second raw water transmission main from the Kentucky River to the city, and construction of a 5,000,000-gallon ground storage water tank.

The Lake Reba Recreation Area, near Richmond, is being developed as a major recreation complex for Madison County. Current facilities include three ball fields, picnic and playground areas, and nature trails.

Planned

Construction of an interchange of Interstate 75 at Kentucky 595, south of Richmond near the Madison Airport, is scheduled to begin in 1986. Plans also are being made to extend the Richmond Bypass from Kentucky 52 east of the city north and west to U.S. Highway 25 north of the city.

Tentative plans are being made for construction of a 300,000-gallon water storage tank for the Kingston-Terrill Water District.

Plans are being made for the construction of a new high school building for the Madison County School System at Berea.

Construction of a new 300,000-square-foot retail shopping mall is scheduled to begin in 1986.