

1977

Industrial Resources: Hopkins County - Madisonville and Earlington

Kentucky Library Research Collections
Western Kentucky University, spcol@wku.edu

Follow this and additional works at: https://digitalcommons.wku.edu/hopkins_cty

 Part of the [Business Administration, Management, and Operations Commons](#), [Growth and Development Commons](#), and the [Infrastructure Commons](#)

Recommended Citation

Kentucky Library Research Collections, "Industrial Resources: Hopkins County - Madisonville and Earlington" (1977). *Hopkins County*. Paper 35.
https://digitalcommons.wku.edu/hopkins_cty/35

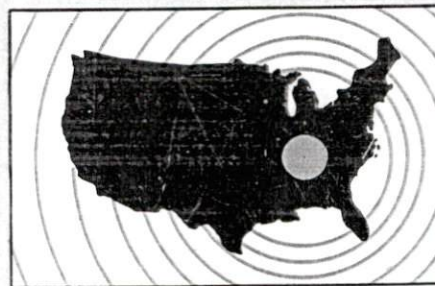
This Report is brought to you for free and open access by TopSCHOLAR®. It has been accepted for inclusion in Hopkins County by an authorized administrator of TopSCHOLAR®. For more information, please contact topscholar@wku.edu.

INDUSTRIAL RESOURCES

MADISONVILLE

EARLINGTON

**Kentucky
first**



DEPARTMENT OF COMMERCE

MADISONVILLE, KENTUCKY --- Index to Industrial Sites --- 1977

For detailed data on individual sites, contact The Greater Madisonville Area Chamber of Commerce, 299 South Main Street, Madisonville, Kentucky 42431, or the Industrial Development Division, Kentucky Department of Commerce, Capital Plaza Tower, Frankfort, Kentucky 40601.



LEGEND

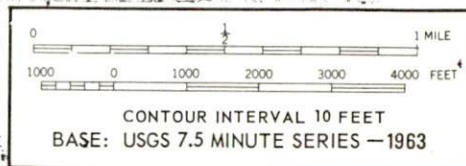
Available Sites

177
10 Ac
Site Number
and Acreage
(General location)

Existing Industries

- A. GENERAL ELECTRIC CO.
- B. HUEBSCH ORIGINATORS
- C. NATIONAL CAN CO.
- D. MID-AMERICA CANNING CORP.
- E. KENTUCKY-BIRMINGHAM BOLT CO.
- F. GOODYEAR TIRE AND RUBBER CO.
- G. YORK DIVISION BORG WARNER CORP.

277
200 ac.
Site Number
and Acreage
(General location)



INDUSTRIAL RESOURCES
MADISONVILLE AND EARLINGTON, KENTUCKY

Prepared by
The Kentucky Department of Commerce
Division of Research and Planning
in cooperation with
The Greater Madisonville Area Chamber of Commerce
and
The City of Earlington

1977

Production supervisor: Patsy Wallace; research: Terry Patterson;
clerical: Mildred Keefer; graphics: N. C. Montague, Frank Ferrante,
Tony Cecconi; cartography: Site Development Section. Cost of printing
paid from state funds.

TABLE OF CONTENTS

<u>Chapter</u>	<u>Page</u>
INDUSTRIAL SITES	i
MADISONVILLE AND EARLINGTON, KENTUCKY - A RESOURCE PROFILE	1
THE LABOR MARKET AREA	3
Population	3
Labor Force Characteristics of Residents, 1975	3
Nonagricultural Employment by Industry, by Place of Work, 1975	4
Major Madisonville Manufacturing Firms, Their Products and Employment	5
Labor Organizations	7
Estimated Male Labor Supply	8
Estimated Female Labor Supply	8
Average Weekly Wages by Industry, by Place of Work, 1975	9
Per Capita Personal Income	11
TRANSPORTATION	12
Rail	12
Highways	12
Truck Service	13
Air	14
Bus	15
Taxi	15
Rental Services	15
POWER AND FUEL	16
Electricity	16
Natural Gas	17
Other Fuels	17
WATER AND SEWERAGE	19
Water	19
Sewerage	21

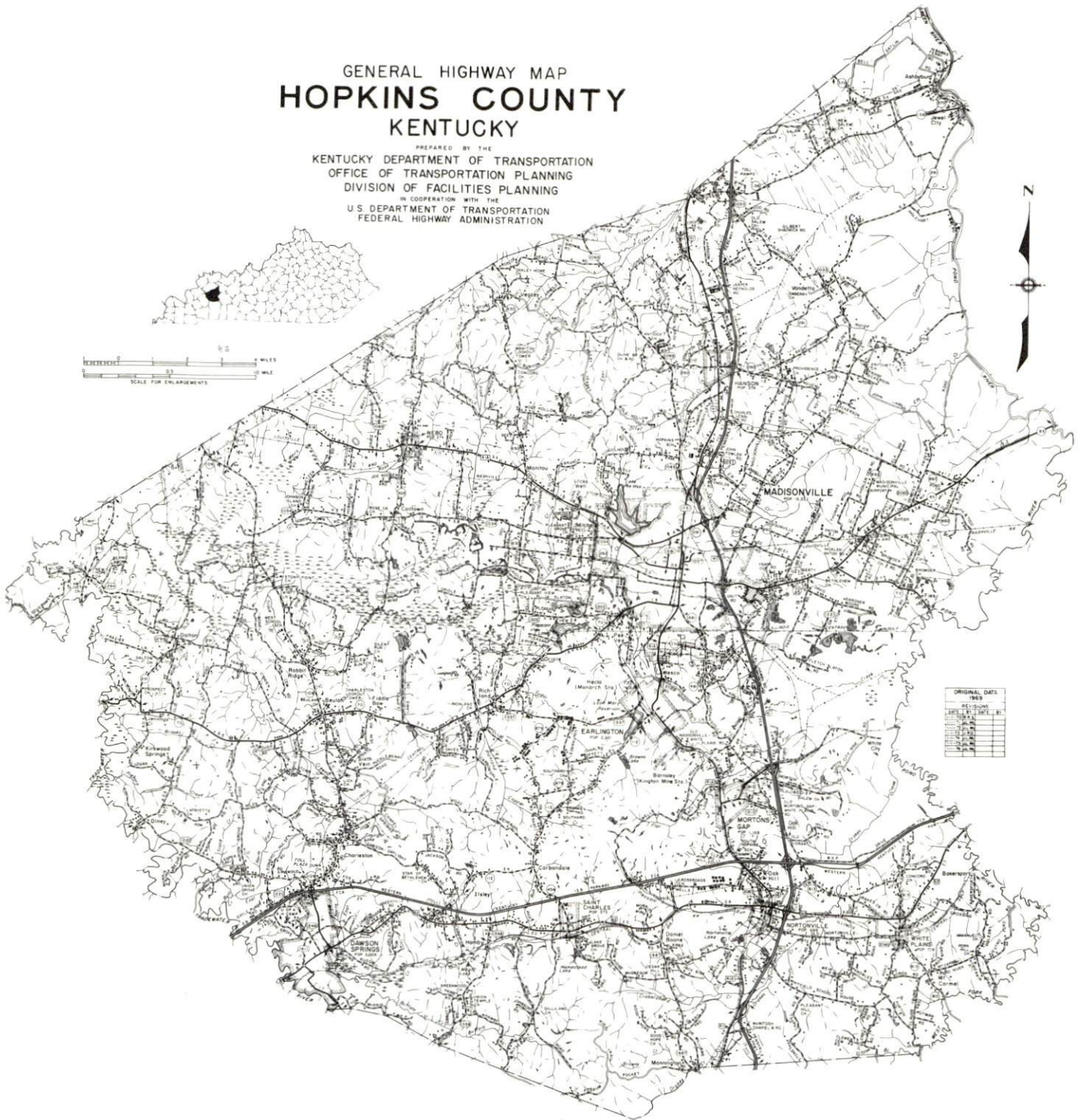
<u>Chapter</u>	<u>Page</u>
CLIMATE	22
LOCAL GOVERNMENT	23
City	23
County	23
Assessed Value of Property, 1976.	23
Property Taxes	23
Local Property Tax Rate Per \$100 of Assessed Valuation, 1976	24
Planning and Zoning	24
Safety	25
Police	25
Fire	25
Rescue Service	25
Solid Waste	26
EDUCATION	27
Public Schools.	27
Nonpublic Schools	27
Area Colleges and Universities	29
Vocational Schools	29
HEALTH	30
Local Medical Personnel	30
Hospitals	30
Other Medical Facilities	30
Ambulance Service.	30
Nursing Homes	31
Public Health	31
OTHER LOCAL FACILITIES.	32
Communications	32
Library Services	33
Religious Institutions.	33
Financial Institutions.	35
Hotels and Motels	35
Clubs and Organizations	35
RECREATION	38
COMMUNITY IMPROVEMENTS	40
HISTORY	42

GENERAL HIGHWAY MAP HOPKINS COUNTY KENTUCKY

PREPARED BY THE
KENTUCKY DEPARTMENT OF TRANSPORTATION
OFFICE OF TRANSPORTATION PLANNING
DIVISION OF FACILITIES PLANNING
IN COOPERATION WITH THE
U.S. DEPARTMENT OF TRANSPORTATION
FEDERAL HIGHWAY ADMINISTRATION



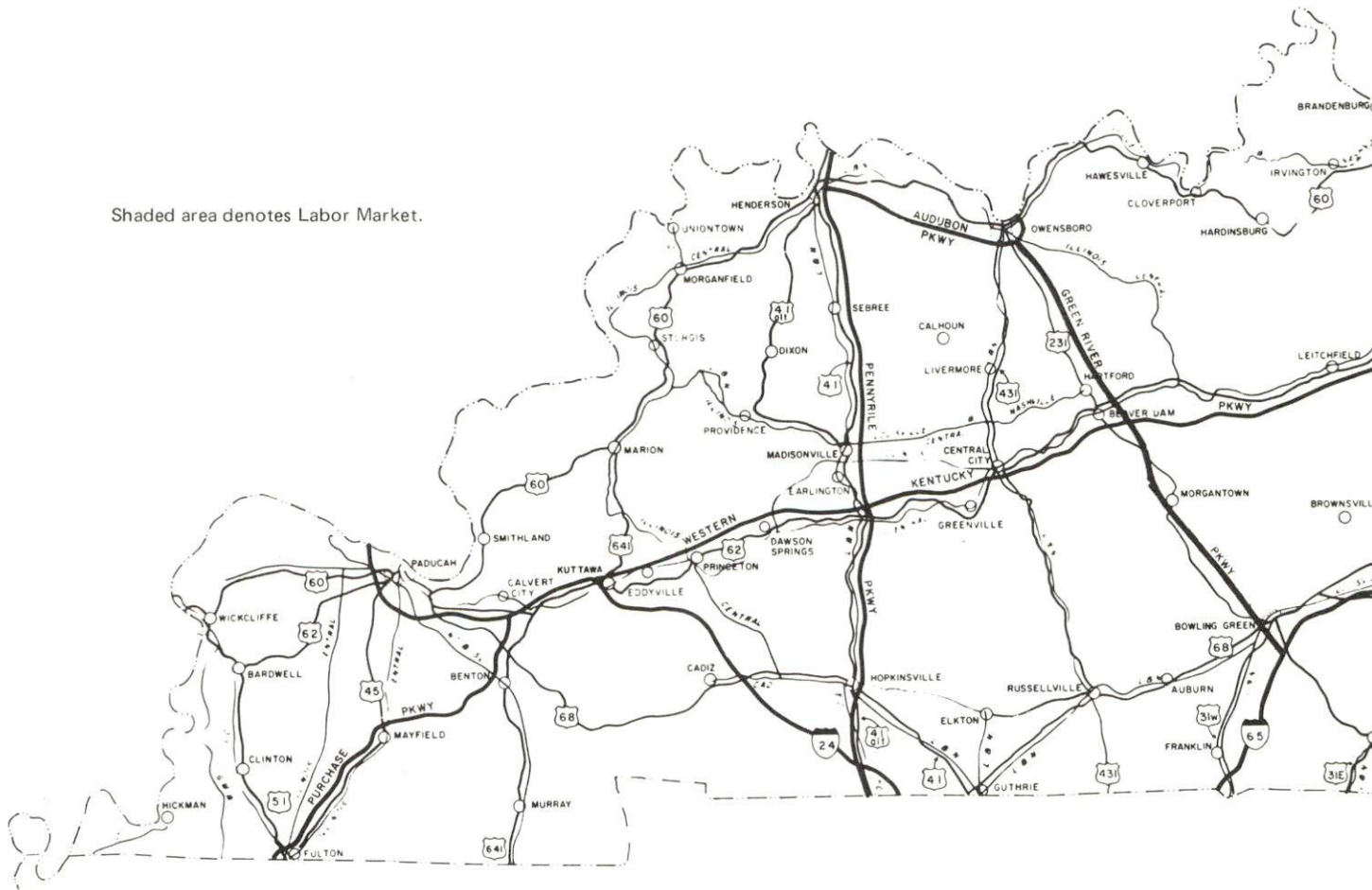
ORIGINAL DATA	
1969	
SECTION	DATE
1	1969
2	1969
3	1969
4	1969
5	1969
6	1969
7	1969
8	1969
9	1969
10	1969
11	1969
12	1969
13	1969
14	1969
15	1969
16	1969
17	1969
18	1969
19	1969
20	1969
21	1969
22	1969
23	1969
24	1969
25	1969
26	1969
27	1969
28	1969
29	1969
30	1969
31	1969
32	1969
33	1969
34	1969
35	1969
36	1969
37	1969
38	1969
39	1969
40	1969
41	1969
42	1969
43	1969
44	1969
45	1969
46	1969
47	1969
48	1969
49	1969
50	1969
51	1969
52	1969
53	1969
54	1969
55	1969
56	1969
57	1969
58	1969
59	1969
60	1969
61	1969
62	1969
63	1969
64	1969
65	1969
66	1969
67	1969
68	1969
69	1969
70	1969
71	1969
72	1969
73	1969
74	1969
75	1969
76	1969
77	1969
78	1969
79	1969
80	1969
81	1969
82	1969
83	1969
84	1969
85	1969
86	1969
87	1969
88	1969
89	1969
90	1969
91	1969
92	1969
93	1969
94	1969
95	1969
96	1969
97	1969
98	1969
99	1969
100	1969



MADISONVILLE & EARLINGTON LABOR MARKET AREA



Shaded area denotes Labor Market.



MADISONVILLE AND EARLINGTON, KENTUCKY - A RESOURCE PROFILE

Madisonville, a member of the All Kentucky City Hall of Fame, is the county seat of Hopkins County. Located on the Pennyriple Parkway in the Western Coal Field Region of Kentucky, Madisonville is 46 miles south of Evansville, Indiana; 105 miles northwest of Nashville, Tennessee; 156 miles southwest of Louisville, Kentucky; and 220 miles southeast of St. Louis, Missouri. The estimated population of Madisonville was 16,324 in 1973.

Earlington, located 4 miles south of Madisonville, had an estimated population of 2,177 in 1973.

Hopkins County, covering a land area of 553 square miles, had a 1975 estimated population of 42,900.

The Economic Framework

The total number of Hopkins County residents employed in 1975 averaged 19,210, with nonagricultural jobs accounting for 18,650 workers. Manufacturing employers in the county reported 3,120 workers; mining and quarrying 2,700; construction firms 760; transportation, communications and public utilities 1,190; wholesale and retail trade 2,490; finance, insurance, and real estate 420; and employees in the service industries 3,040. Major industrial products are fluorescent lamp ballasts, industrial tires, shirts, air conditioning systems and furnaces, custom injection molding, and washable service apparel.

Total unemployment in Hopkins County averaged 3.6 percent of the labor force in 1975.

Per capita personal income in the county in 1974 was \$5,248, an increase of 54.2 percent since 1970.

The Madisonville and Earlington labor market area includes Hopkins and the five adjoining counties. The total number of residents of the labor market area employed in 1975 averaged 62,450, with non-agricultural jobs accounting for 58,210 workers. Manufacturing employers in the area reported 8,950 workers; mining and quarrying 6,880; construction firms 1,950; transportation, communications and public utilities 2,470; wholesale and retail trade 9,280; finance, insurance, and real estate 1,510; and employees in the service industries 7,180.

Resources for Growth

1. Labor Supply - There is a current labor supply of 7,340 men and 12,140 women available for industrial jobs in the labor market area. In addition, 7,370 young men and 7,200 young women in the area will become 18 years of age before 1982 and potentially available for work.

2. Transportation - The local transportation capability is excellent. The Louisville & Nashville Railroad serves the Madisonville and Earlington area, and the Illinois Central Gulf Railroad serves Madisonville. The Pennyriple Parkway and U. S. Highway 41, which connects with the Western Kentucky Parkway, provide easy highway access to major market areas. The Madisonville Municipal Airport currently has a 4,200-foot paved runway, capable of accommodating light aircraft. The airport plans to extend the runway to 5,000 feet and install a more advanced lighting system. Commercial air service is available at the Evansville Dress Regional Airport, 50 miles north of Madisonville.

3. Utilities and Fuel - Madisonville is supplied electric power by the Municipal Light and Water Plant of Madisonville, while Earlington is supplied by the Kentucky Utilities Company. Hopkins County is served electricity by the Kentucky Utilities Company, Green River Electric Corporation, and the Henderson-Union RECC. Natural gas service is provided to Madisonville and Earlington by the Western Kentucky Gas Company, whose source of supply is the Texas Gas Transmission Corporation. There are three distributors of propane and nine distributors of distillate fuel oil located in the Madisonville-Earlington area.

4. Education - Two public school systems operate in Hopkins County. Madisonville and Earlington are served by the Hopkins County School System.

Madisonville Community College, a part of the University of Kentucky Community College System, provides two years of liberal arts and career-oriented programs and offers an Associate Degree in Arts, Science, or Applied Science. In the spring of 1973, the college moved to a new \$3,000,000 facility situated on a 150-acre campus just north of Madisonville. In addition, one university, one university extension campus, two senior colleges and two other community colleges are located within 50 miles of Madisonville.

A state vocational-technical school is located at Madisonville and offers training in sixteen course areas.

THE LABOR MARKET AREA

POPULATION

Area	1975*	1970	Percent Nonwhite
			1970
Madisonville	16,324**	15,332	12.0
Earlington	2,177**	2,321	29.9
Labor Market Area	180,800	157,451	N.A.
Hopkins County	42,900	38,167	7.9
Caldwell County	13,500	13,179	7.1
Christian County	69,800	56,224	22.5
McLean County	10,200	9,062	0.9
Muhlenberg County	30,300	27,537	4.3
Webster County	14,100	13,282	7.1

*Provisional Estimates.

**1973 Population Estimates.

Sources: U. S. Department of Commerce, Bureau of the Census, Census of Population, 1970. U. S. Department of Commerce, Bureau of the Census, Current Population Reports, Series P-25, No. 562, June 1975; Series P-26, No. 75-17, May 1976.

LABOR FORCE CHARACTERISTICS OF RESIDENTS, 1975

	Hopkins County	Labor Market Area
Civilian Labor Force	19,930	66,730
Employment	19,206	62,454
Agricultural	555	4,245
Nonagricultural	18,651	58,209
Unemployment	724	4,276
Rate of Unemployment (percent)	3.6	6.4

Source: Kentucky Department for Human Resources, Kentucky Labor Force Estimates, Annual Averages, 1975.

NONAGRICULTURAL EMPLOYMENT BY INDUSTRY,
BY PLACE OF WORK, 1975

	<u>Hopkins County</u>	<u>Labor Market Area</u>
All Industries	13,750	38,395
Mining & Quarrying	2,699	6,877
Contract Construction	759	1,950
Manufacturing	3,122	8,946
Food & Kindred Products	222	515
Tobacco	0	11
Apparel, Textiles, Leather	510	2,490
Lumber, Furniture	120	787
Printing & Publishing, Paper	105	213
Chemicals, Petroleum, Coal &		
Rubber	613	815
Stone, Clay & Glass	33	163
Primary Metals	3	520
Machinery, Metal Products &		
Equipment	1,506	3,232
Other Manufacturing	9	200
Transportation, Communications,		
& Public Utilities	1,194	2,469
Wholesale & Retail Trade	2,492	9,281
Finance, Insurance &		
Real Estate	415	1,514
Services	3,038	7,184
Other	30	108

Note: Excludes domestic workers, railway workers; certain nonprofit corporations; majority of federal, state, and local government workers; and self employed workers. Labor market area totals for some employment categories exclude employment that was not disclosed for individual counties. Manufacturing detail may not add to totals because of rounding of base data.

Source: Kentucky Department for Human Resources, Average Monthly Workers Covered by Kentucky Unemployment Insurance Law, 1975.

MAJOR MADISONVILLE MANUFACTURING FIRMS,
THEIR PRODUCTS AND EMPLOYMENT*

<u>Firm</u> (Establishment date)	<u>Product</u>	<u>Employment</u>			<u>Organized</u>
		<u>Total</u>	<u>Male</u>	<u>Female</u>	
American Mine Tool, Inc. (1972)	Mine bits	114	110	4	**
The Enro Shirt Company, Inc. (1948)	Dress and sport shirts	418	29	389	**
General Electric Company (1970)	Fluorescent lamp ballasts	800	150	650	**
Goodyear Tire & Rubber Company (1966)	Industrial tires	337	287	50	**
Huebsch Originators (1968)	Coin-op laundry dryers, dryer service parts	124	119	5	
Kentucky - Birmingham Bolt Company (1968)	Mine roof bolts, steel plates for mine bolts	128	125	3	**
Mid America Canning Corporation (1970)	Canned and bottled soft drinks	86	71	15	
Southern Specialty, Division of Knowlton Brothers, Inc. (1973)	Filter paper for auto air, fuel and oil filters	54	50	4	
U. C. Milk Company, Inc. (1927)	Fluid milk, cul- tured buttermilk	133	119	14	**
York Division of Borg Warner Corporation (1974)	Air conditioning systems, furnaces	363	233	130	

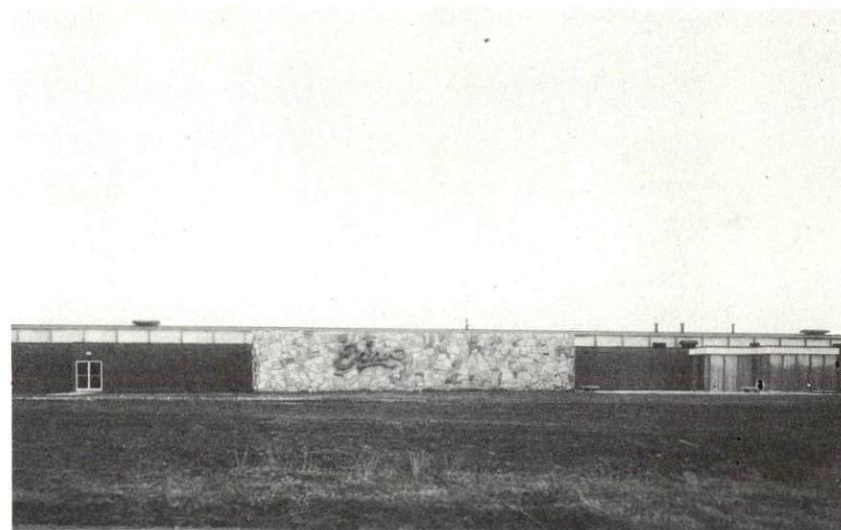
*Employment over 50.

**See Labor Organizations below.

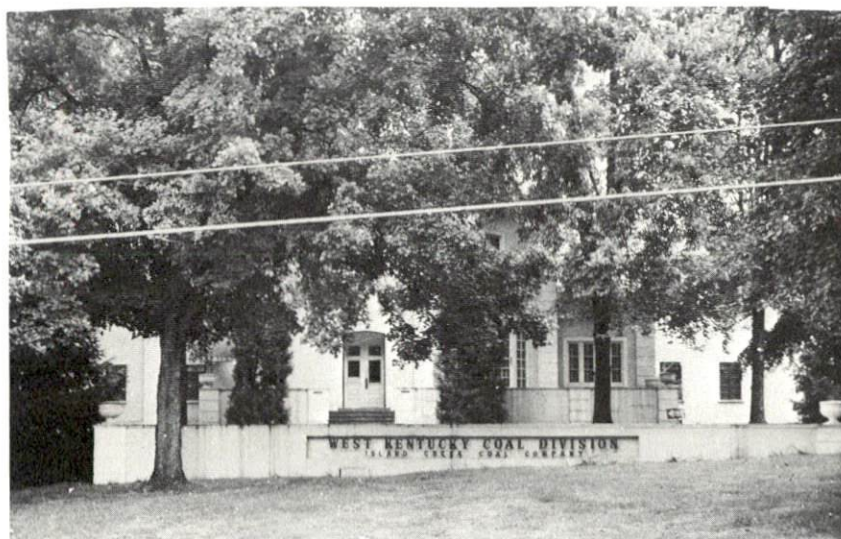
Source: Kentucky Department of Commerce, Division of Research
and Planning.



Versnick Manufacturing Company



Enro Shirt Company



Island Creek Coal Company



U. C. Milk Company

LABOR ORGANIZATIONS

<u>Union</u>	<u>Representing manufacturing workers at:</u>
United Steelworkers of America	American Mine Tool, Inc., and National Can Company
International Brotherhood of Teamsters, Chauffeurs, Warehousemen, and Helpers of America	Austin Powder Company
Amalgamated Clothing Workers of America	The Enro Shirt Company, Inc.
International Union of Electrical, Radio, and Machine Workers	General Electric Company
United Rubber Workers	Goodyear Tire & Rubber Company
International Brotherhood of Boilermakers, Shipbuilders, Ironworkers, Blacksmiths, Forgers, and Helpers	Kentucky-Birmingham Bolt Company
United Steelworkers of America	U. C. Milk Company, Inc.

ESTIMATED MALE LABOR SUPPLY
MADISONVILLE AND EARLINGTON LABOR MARKET AREA

Area	Current			Future	
	Total	Not in Labor Force	Unemployed	Under- employed	Reaching 18 yrs. of age before 1982
Labor Market					
Area	7,340	2,620	1,780	2,940	7,368
Hopkins	840	0	370	470	1,883
Caldwell	1,050	570	310	170	565
Christian	4,060	1,950	530	1,580	2,624
McLean	260	0	110	150	400
Muhlenberg	650	0	300	350	1,316
Webster	480	100	160	220	580

Sources: Kentucky Department for Human Resources, Kentucky Labor Supply Estimates by County, 1975. Kentucky Department of Commerce, Future Labor Supply before 1982.

ESTIMATED FEMALE LABOR SUPPLY
MADISONVILLE AND EARLINGTON LABOR MARKET AREA

Area	Current			Future	
	Total	Not in Labor Force	Unemployed	Under- employed	Reaching 18 yrs. of age before 1982
Labor Market					
Area	12,140	8,310	1,140	2,690	7,200
Hopkins	840	0	170	670	1,715
Caldwell	1,220	680	260	280	564
Christian	6,550	5,080	440	1,030	2,521
McLean	200	0	60	140	456
Muhlenberg	2,380	1,890	140	350	1,363
Webster	950	660	70	220	581

Sources: Kentucky Department for Human Resources, Kentucky Labor Supply Estimates by County, 1975. Kentucky Department of Commerce, Future Labor Supply before 1982.

AVERAGE WEEKLY WAGES BY INDUSTRY,
BY PLACE OF WORK, 1975

	<u>Hopkins County</u>	<u>Caldwell County</u>	<u>Christian County</u>
All Industries	\$185.77	\$130.88	\$135.43
Mining & Quarrying	334.19	205.51	185.07
Contract Construction	196.55	125.35	154.13
Manufacturing	167.17	145.18	147.20
Transportation, Com- munications and Public Utilities	185.89	146.59	171.17
Wholesale and Retail Trade	126.73	113.45	122.53
Finance, Insurance and Real Estate	145.92	163.20	137.95
Services	125.01	96.74	123.68
Other	106.73	132.78	158.49
	<u>McLean County</u>	<u>Muhlenberg County</u>	<u>Webster County</u>
All Industries	\$164.40	\$235.05	\$213.73
Mining & Quarrying	289.16	358.57	342.40
Contract Construction	114.79	139.02	171.39
Manufacturing	149.15	111.81	138.54
Transportation, Com- munications and Public Utilities	268.08	229.60	*
Wholesale and Retail Trade	109.57	134.78	94.11
Finance, Insurance and Real Estate	109.72	145.76	136.47
Services	96.22	99.11	79.00
Other	*	92.46	*

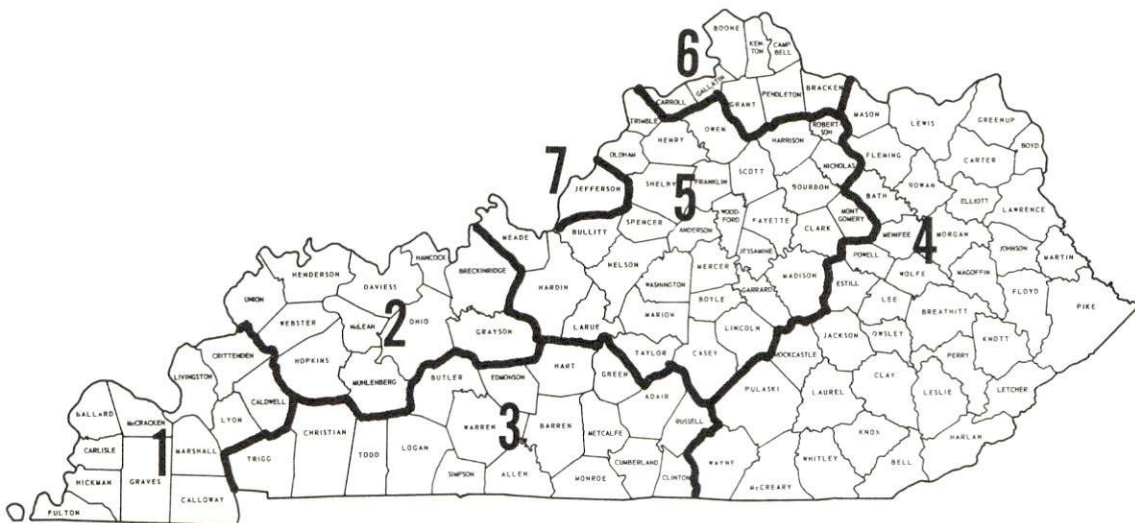
Note: Excludes domestic workers, railway workers; certain nonprofit corporations; majority of federal, state and local government workers; and self employed workers.

*Not disclosed.

Source: Kentucky Department for Human Resources, Average Weekly Wages of Workers Covered by Unemployment Insurance, 1975.

Occupational wage rates for specific industries are usually not available to most government agencies, and wage data furnished to state employment agencies by individual industrial employers is protected from disclosure by federal law. The most reliable up-to-date wage information can be obtained by direct contact with local employers.

Associated Industries of Kentucky, a voluntary organization of Kentucky businesses, regularly collects occupational wage rates and fringe benefits data from participating member firms. Data is compiled for over 127 clearly defined office, production, and service occupations. Tabulations are published for seven regions of Kentucky, as shown on the map below. It should be noted that the data may be weighted by the preponderance of firms in the larger cities and may be somewhat higher than the rates paid in the smaller communities. Data from these tabulations are available, upon request, from the Kentucky Department of Commerce, Frankfort, Kentucky 40601.



Associated Industries of Kentucky Area Wage Surveys

PER CAPITA PERSONAL INCOME

<u>Area</u>	<u>1974</u>	<u>1970</u>	<u>Percent Change</u>
Hopkins County	\$5,248	\$3,404	54.2
Labor Market Area			
Range	\$3,909 - 5,248	\$2,791 - 3,404	N.A.
Kentucky	4,442	3,112	42.7
U. S.	5,448	3,966	37.4

Sources: U. S. Department of Commerce, Bureau of Economic Analysis, Survey of Current Business, August 1975. U. S. Department of Commerce, Bureau of Economic Analysis, March 1976.

TRANSPORTATION

Rail

Line serving Madisonville and Earlington - Louisville & Nashville Railroad
Services - 4 northbound and 4 southbound through freights daily;
switching facilities available in Earlington; team track for 15 cars
in Madisonville and 60 cars in Earlington; siding space for 15 cars
in Madisonville and 450 cars in Earlington; nearest piggyback
facilities are in Evansville, Indiana, 46 miles north of Madisonville

Line serving Madisonville - Illinois Central Gulf Railroad
Services - 4 daily through freights; 6 daily through freights (hauling
coal); switching facilities; team track for 12 cars; nearest piggy-
back facilities at Princeton, 37 miles southwest of Madisonville

Details on routing, schedules, rates, and services, contact:

Manager of Industrial Development
Louisville & Nashville Railroad
908 West Broadway
Louisville, Kentucky 40203
(502) 587-5000

and/or

Manager of Industrial Development
Illinois Central Gulf Railroad
112 North 4th Street
St. Louis, Missouri 63102
(314) 241-9400

Highways

U. S. Highways 41 and 41A and Kentucky Highways 70, 85, and 254 serve Madisonville. U. S. Highway 41A and Kentucky Highway 112 intersect Earlington. Two interchanges of the Pennyryle Parkway, which runs north to south from Henderson to Hopkinsville, are located at Madisonville. In addition, the Western Kentucky Parkway, running east to west, is located 8 miles south of Madisonville.

South Main Street in Madisonville is now being widened to four lanes. The project will extend to the northern city limits of Earlington.

Truck Service

Company

Madisonville

A & H Truck Line, Inc.*
Duff Truck Line, Inc.*
Harper Truck Service, Inc.
Interstate Motor Freight System
Ligon Specialized Hauler, Inc.*
Majors Transit, Inc.
McLean Trucking Company

Overnite Transportation
Company*
Renner's Express, Inc.

Schroder's Express, Inc.

T.I.M.E. - DC, Inc.

Tennessee Cartage Company, Inc.

Earlington

Harper Truck Service, Inc.

Ligon Specialized Hauler, Inc.

Majors Transit, Inc.

McLean Trucking Company

Overnite Transportation
Company
T.I.M.E. - DC, Inc.

Tennessee Cartage Company, Inc.

Home Office

1111 East Louisiana Street
Evansville, Indiana 47717
P. O. Box 359
Lima, Ohio 45802
1230 North 8th Street
Paducah, Kentucky 42001
134 Grandville Avenue S. W.
Grand Rapids, Michigan 49502
Kentucky Highway 85E
Madisonville, Kentucky 42431
P. O. Box 7
Caneyville, Kentucky 42721
P. O. Box 213
Winston-Salem, North Carolina
27102

1000 Semmes Avenue
Richmond, Virginia 23209
1350 South West Street
Indianapolis, Indiana 46206
1550 Perin Street
Cincinnati, Ohio 45204
P. O. Box 2550
Lubbock, Texas 79408
1238 Antioch Pike
Nashville, Tennessee 37211

1230 North 8th Street
Paducah, Kentucky 42001
Kentucky Highway 85E
Madisonville, Kentucky 42431
P. O. Box 7
Caneyville, Kentucky 42721
P. O. Box 213
Winston-Salem, North Carolina
27102

1000 Semmes Avenue
Richmond, Virginia 23209
P. O. Box 2550
Lubbock, Texas 79408
1238 Antioch Pike
Nashville, Tennessee 37211

*Local terminal.

Other Freight ServicesShipping Center

United Parcel Service

Madisonville

HIGHWAY MILES AND TRUCK TRANSIT TIME IN DAYS FROM
MADISONVILLE, KENTUCKY, TO SELECTED MARKET CENTERS

City	Delivery		City	Delivery	
	Highway Miles	Time TL		Highway Miles	Time TL
Atlanta, Ga.	347	2	Los Angeles, Calif.	2,065	5
Birmingham, Ala.	301	3	Louisville, Ky.	156	1
Chicago, Ill.	396	2	Nashville, Tenn.	105	1
Cincinnati, Ohio	257	1	New Orleans, La.	622	2
Cleveland, Ohio	501	2	New York, N. Y.	904	2
Detroit, Mich.	516	2	Pittsburgh, Pa.	544	2
Knoxville, Tenn.	282	3	St. Louis, Mo.	220	3

Sources: Delivery Time Only - McLean Trucking Company, P. O. Box 213,
Winston-Salem, North Carolina 27102; Renner's Express, Inc.,
P. O. Box 882, Indianapolis, Indiana 46206.

AirLocal

Madisonville Municipal Airport*

Location: 6 miles east of Madisonville

Runways: 1 paved

Length: 4,200 feet

Traffic Control: Wind tee and sock

Lighting: Runway lighting sunset to
sunrise, rotating beaconServices: 100 octane, flight training
and charter - single and
multi-engine, major and
minor repairs, auto rental

Air Freight

Service: Chartered air freight services
must be arranged.

*Planned improvements include: extension of the runway to 5,000 feet;
installation of RAILS and VASI 4 lighting systems; and construction of
a parallel taxi runway and additional airplane parking space.

Nearest Commercial

Location: Evansville Dress Regional Airport
4 miles northeast of Evansville, Indiana;
50 miles from Madisonville

Runways: 3 paved

Length: 8,027, 5,084, 2,968 feet

Traffic Control: Unicom, approved instrument approach

Lighting: Beacon, runway lights (hours of darkness)

Services: Eastern, Delta, and Allegheny Airlines;
80-87, 100-130, jet fuel; minor repairs,
hangars and tie downs; charter;
weather information; taxi, car rentals,
and limousine; restaurant

Air Freight Service: Air freight terminal regularly serviced by
freight carrying airlines

Madisonville

Earlington

Bus -

Greyhound Bus Lines
Kentucky Bus Lines

Greyhound Bus Lines

Taxi -

2 companies, radio-dispatched, 24-hour service

3 companies, 24-hour service

Rental Services -

Complete car, truck and trailer rentals

Nearest car, truck and trailer rental service at Madisonville, 4 miles distant

POWER AND FUEL

Electricity

Company serving Madisonville - Municipal Light and Water Plant

Source of power - Kentucky Utilities Company

Total generating capacity - 1,615,500 KW

For industrial rates contact:

Municipal Light and Water Plant
Municipal Building
Madisonville, Kentucky 42431
(502) 821-4522

Company serving Earlington and Hopkins County - Kentucky Utilities Company

Source of power - Kentucky Utilities Company

Total generating capacity - 1,615,500 KW

For industrial rates contact:

Industrial Development Department
Kentucky Utilities Company
120 South Limestone Street
Lexington, Kentucky 40507
(606) 255-1461

Company serving Hopkins County - Green River Electric Corporation and Henderson-Union RECC

Source of power - Big Rivers Electric Corporation

Total generating capacity - 590,000 KW

For industrial rates contact:

Green River Electric Corporation
P. O. Box 1389
Owensboro, Kentucky 42301
(502) 926-4141

and/or

Henderson-Union RECC
P. O. Box 18
Henderson, Kentucky 42420
(502) 826-3991

Natural Gas

Company serving Madisonville - Western Kentucky Gas Company

Source of supply - Texas Gas Transmission Corporation

Size of transmission mains - 10 inches (supplier);

8, 6, and 4 inches (distributor)

Distribution mains - 6, 4 and 2 inches

Distribution pressure - 15 psi (summer); 25 psi (winter)

Btu content - 1,000 per cubic foot

Specific gravity - .60

For rates and supplies contact:

Director of Marketing
Western Kentucky Gas Company
311 West 7th Street
Owensboro, Kentucky 42301
(502) 684-8811

Company serving Earlington - Western Kentucky Gas Company

Source of supply - Texas Gas Transmission Corporation

Size of transmission mains - 10 inches (supplier);

8, 6 and 4 inches (distributor)

Distribution mains - 2 inches

Distribution pressure - 10 psi (summer); 15 psi (winter)

Btu content - 1,000 per cubic foot

Specific gravity - .60

For rates and supplies contact:

Director of Marketing
Western Kentucky Gas Company
311 West 7th Street
Owensboro, Kentucky 42301
(502) 684-8811

Other Fuels

Propane

Lin-Gas, Inc., Highway 415, Hanson, Kentucky 42413

Pargas of Nebo, Highway 41A, Nebo, Kentucky 42441

Texgas Corporation, Outer North Main, Madisonville, Kentucky
42431

Fuel oils

Distillate fuel oil -

Corum & Gibson Oil Company, Inc., Highway 41, Madisonville,
Kentucky 42431 (bulk plant)
W. H. Cox Distributing Company, Greenville Pike, Madisonville,
Kentucky 42431
Dugger's Sunoco, Hanson Road, Madisonville, Kentucky 42431
(bulk plant)
Gulf Oil Company, Lincoln Avenue, Madisonville, Kentucky 42431
Freddie Gunn Ashland Oil Distributor, 708 South Main,
Madisonville Kentucky 42431
Marathon Oil Company, Bassett Avenue, Madisonville,
Kentucky 42431
Shell Oil Jobber, South Main, Madisonville, Kentucky 42431
Standard Oil Company, 181 Murray, Madisonville, Kentucky 42431
(bulk plant)
Winn Oil Company, 115 East Clark, Earlington, Kentucky 42410

Residual fuel oil - Arrangements must be made with the refinery.

Low sulphur content coal - Available in eastern Kentucky

WATER AND SEWERAGE

Water

Company serving Madisonville - Municipal Light and Water Plant
P. O. Box 704
Madisonville, Kentucky 42431
(502) 821-4522

Source - Impoundment from four surface lakes*

Treatment plant capacity - 7,000,000 gallons per day

Average daily consumption - 3,800,000 gallons

Peak daily consumption - 4,200,000 gallons

Type treatment - Sedimentation, filtration, absorption, stablization,
flocculation, chlorination, fluoridation

Storage capacity - 3,300,000 gallons**

Size lines - 4 to 16 inches

Average pressure - 45 psi

Average temperature - 62 degrees F.

MONTHLY WATER RATES FOR WHOLESALE AND INDUSTRIAL CONSUMERS

First	2,000 gallons	\$2.80 Minimum
Next	8,000 gallons	.80 per M gallons
Next	10,000 gallons	.55 per M gallons
Next	30,000 gallons	.40 per M gallons
Next	450,000 gallons	.35 per M gallons
All over	500,000 gallons	.25 per M gallons

Rates outside the city limits of Madisonville: The water bill to be computed by adding 20 percent to the rates as shown on the schedule above.

Tap-on charges (tap fees and labor for laying water lines)

5/8-inch meter	\$185
1-inch meter	260
1 1/2-inch meter	470
2-inch meter	610

The cost for laying water lines will be \$1 per foot.

*A 24-inch water transmission main will be extended to the Green River to furnish an additional water source.

**Does not include clearwell storage.

Company serving Earlington - Earlington Water and Sewer Company*
West Main Street
Earlington, Kentucky 42410
(502) 383-5121

Source - Loch Mary Reservoir

Treatment plant capacity - 400,000 gallons per day

Average daily consumption - 250,000 gallons

Peak daily consumption - 300,000 gallons

Type treatment- Filtration, sedimentation, flocculation, chlorination

Storage capacity - 200,000 gallons

Size lines - 6, 4, 3, 2 and 1 inches

Average pressure - 90 psi

Average temperature - 78 degrees F.

MONTHLY WATER RATES FOR WHOLESALE
AND INDUSTRIAL CONSUMERS

First	2,000 gallons	\$4.50 Minimum
Next	2,000 gallons	.85 per M gallons
Next	2,000 gallons	.80 per M gallons
Next	2,000 gallons	.75 per M gallons
Next	2,000 gallons	.70 per M gallons
Next	10,000 gallons	.60 per M gallons
Next	30,000 gallons	.50 per M gallons
All over	50,000 gallons	.40 per M gallons

Tap-on charge - \$60

Surface water sources - Impoundment from four surface lakes for
Madisonville; Tradewater and Pond Rivers

Average discharge - Tradewater River at Olney, 329 cfs (35 years,
USGS); Pond River near Apex, 264 cfs (35 years, USGS)

Expected ground water yield - 50 to 200 gpm in southern and western
part of county; 5 to 50 gpm in bands running east-west in central
part of county; 5 gpm or less in remainder of county

*Planned improvements include: complete replacement of water distri-
bution mains, meters, and fire hydrants; reparation of sedimentation
basin; and reconstruction of the flocculation and filtration systems, which
will increase the treatment capacity to 600,000 gallons per day.

Sewerage

Company serving Madisonville - Municipal Light and Water Plant*
P. O. Box 704
Madisonville, Kentucky 42431
(502) 821-4522

Design capacity - 2,000,000 gallons per day
Average daily flow - At capacity
Treatment - Primary and secondary
Type treatment - Drying beds, trickling filter, clarifiers,
chlorination
Treated effluent discharged into - Flat Creek
Size of sanitary mains - 15, 18 and 24 inches
Size of storm mains - 10 inches to 6 feet
Rates - 50 percent of monthly water bill
Tap-on charge: \$350 (\$150 where sewer installation was paid
by property owner)

Company serving Earlington - Earlington Water & Sewer Company*
West Main Street
Earlington, Kentucky 42410
(502) 383-5121

Design capacity - 350,000 gallons per day
Average daily flow - 108,000 gallons
Treatment - Primary and secondary
Type treatment - Sedimentation, digester, trickling filter, drying
beds, chlorination
Treated effluent discharged into - Drakes Creek
Size of sanitary mains - 8 and 6 inches
Rates - 100 percent of monthly water bill
Tap-on charge: \$200

*A 201 Facilities Study for Hopkins County was completed in April, 1976. The present sewage treatment plant in Madisonville will be upgraded, while the Earlington plant will be phased out. The projected completion date is December, 1977.

CLIMATE

Hopkins County

Temperature

Annual mean (30-year record)	56.0 degrees
Average annual 1975	57.0 degrees
Record highest, July, 1966 (15-year record)	104.0 degrees
Record lowest, January, 1963 (15-year record)	- 18.0 degrees
Normal heating degree days (30-year record)	4,629
(Heating degree day totals are the sums of negative departures of average daily temperatures from 65 degrees F.)	

Precipitation

Mean annual total (30-year record)	41.88 inches
Mean annual snowfall (36-year record)	13.10 inches
Total precipitation 1975	51.01 inches
Mean number days precipitation (.01 inch or more) (35-year record)	115
Average number days thunderstorms (35-year record)	46

Prevailing Winds (14-year record)

South-
southwest

Relative Humidity (14-year record)

Midnight	79 percent
6 a. m.	81 percent
Noon	60 percent
6 p. m.	63 percent

Source: U. S. Department of Commerce, Environmental Science Services
Administration, Climatological Data, 1975. Station of record:
Evansville, Indiana.

LOCAL GOVERNMENT

City

Madisonville

Structure - Mayor - 4-year term; 6 councilmen - 2-year terms

Budget 1976 - General Fund \$2,523,026

Water, Sewer and Electric Fund 3,846,300

Fees and licenses - Occupational license tax - one percent of all wages, salaries and net profits; city motor vehicle sticker - \$10 annually

Earlington

Structure - Mayor - 4-year term; 6 councilmen - 2-year terms

Budget 1975 - General Fund \$108,986.96

Water and Sewer Fund 97,254.56

Fees and licenses - Business licenses - \$10.75 annually; city auto stickers - \$10.00; unloading license - \$15.75 annually

County

Structure - County Judge - 4-year term; 7 magistrates - 4-year terms

Budget 1975-76 - General Fund \$708,144; Road Fund \$356,980

Assessed Value of Property, 1976

<u>Classes of Property</u>	<u>Madisonville</u>	<u>Earlington</u>	<u>Hopkins County</u>
Real Estate	\$133,990,877	\$6,983,714(1975)	\$345,710,256
Tangibles	56,320,310	2,887,456(1975)	115,005,387

Property Taxes

All property in Kentucky is assessed at 100 percent of fair cash value.

Land and buildings are taxed by the state and may be taxed by local jurisdictions. The state rate is \$0.315 per \$100 of assessed valuation. Beginning January 1, 1977, local school tax rates were reduced by \$0.30 per \$100 valuation and the state rate was increased by \$0.30 per \$100 (from \$0.015), resulting in no net change in the combined state and local rates.

Manufacturing machinery, raw materials inventories, pollution control equipment, and goods in the process of manufacture are not subject to local taxation. The state rate is \$0.15 per \$100.

Other tangible personal property owned by manufacturers (automobiles, trucks, finished goods, office furniture, office equipment) is taxed by the state at \$0.45 per \$100 and may be taxed by local jurisdictions. Beginning January 1, 1977, local school rates were reduced by \$0.30 per \$100 valuation and the state rate was raised by \$0.30 per \$100 (from \$0.15).

Property stored in public warehouses in a transit status is not subject to local taxation. The state rate is only \$0.015 per \$100.

Intangible personal property located in Kentucky (money in hand, shares of stock, notes, bonds, accounts, and other credits) is taxed by the state at \$0.25 per \$100, and is not subject to local taxation.

Intangible personal property owned by corporations in Kentucky as a result of business transactions performed out-of-state, but having a tax situs in Kentucky (accounts receivable, notes, bonds, credits, non-domestic bank deposits, licensing or royalty agreements, shares of stock of any affiliated company, etc.) is taxed by the state at \$0.015 and is not subject to local taxation.

Local Property Tax Rate Per \$100 of Assessed Valuation, 1976*

<u>Taxing Jurisdiction</u>	<u>Madisonville</u>	<u>Earlington</u>	<u>Hopkins County</u>
County	\$.160	\$.160	\$.160
School	.682	.701	.682
City	.300	.305	

Planning and Zoning

Madisonville

Joint agency - Hopkins County Joint Planning Commission

Zoning enforced - In the city

Subdivision regulations enforced - In the city and those areas served by the Municipal Light and Water Plant

Local codes enforced - Building and housing

Mandatory state codes enforced - Plumbing, National Fire Protection Association Code, National Building Code (for major buildings and residential construction containing more than 12 bedrooms per building)

*Kentucky Department of Revenue.

Earlington

Joint agency - Hopkins County Joint Planning Commission

Zoning enforced - City only

Subdivision regulations enforced - City only

Local codes enforced - Building and housing

Mandatory state codes enforced - Plumbing, National Fire Protection

Association Code, National Building Code (for major buildings and residential construction containing more than 12 bedrooms per building)

Safety

<u>Police</u>	<u>Madisonville</u>	<u>Earlington</u>	<u>Hopkins County</u>
Total staff	50	3	9
Radio-patrol cars	6	1	5

Fire

American Insurance

Association Fire

Rating 6 and 9 7

Full-time staff 48 (3 stations)

Volunteers 26

Rescue Service

Hopkins County Radio and Rescue Association, Inc.

Number of volunteers - 39

Equipment - Ambulance, 2 boats, dragging equipment, search lights and power plant

Personnel training - First aid, dragging operations and radio communications

Earlington Rescue Squad:

Number of volunteers - 26*

Equipment - 2 fire trucks, 1 tanker truck, fully equipped emergency vehicle

Personnel training - EMT and Red Cross

*Operated by the Earlington Volunteer Fire Department.

Solid Waste

	<u>Madisonville</u>	<u>Earlington</u>
Type service	Municipal	Municipal
Fee charged:		
residential	\$2 monthly	\$4 monthly
business	\$2 monthly	Contract
industrial	\$2 monthly	
Collection frequency:		
residential	Weekly	Weekly
business	As required	Contract
industrial	As required	
Trash pickup	As required	As required
Disposal method	Landfill	Landfill

Hopkins County provides a free sanitation service to residents of the county. Refuse may be disposed of at collection points which are located throughout the county. The county provides pick-up service at these points with disposal at the county sanitary landfill.

EDUCATION

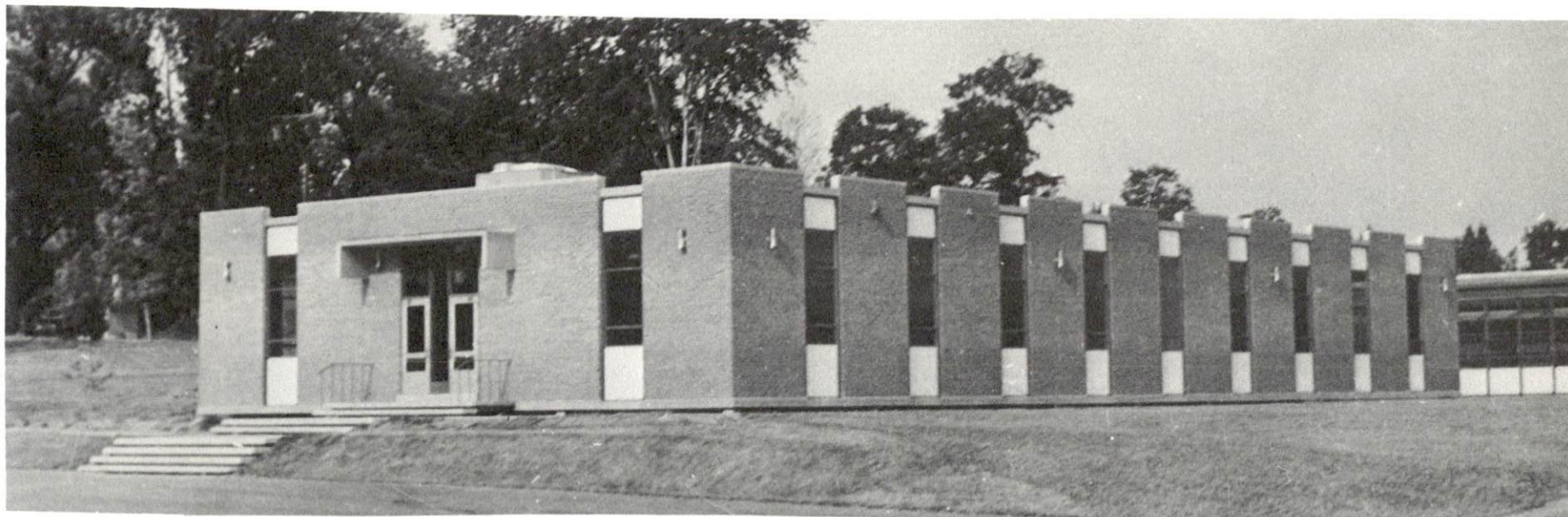
Public Schools

Hopkins County

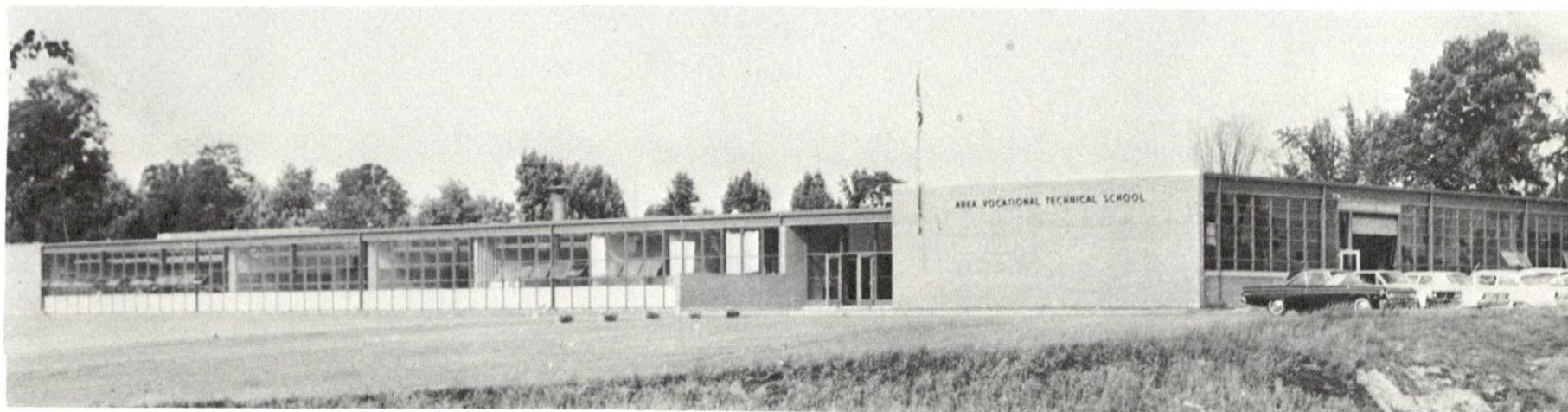
Total Enrollment	
(September, 1976)	8,482
Elementary	5,525
Junior High	862
High School	2,095
Student-Teacher Ratio	20-1
Elementary	21-1
Junior High	19-1
High School	18-1
Accreditation	Southern Association of Colleges and Schools
Percent High School	
Graduates to College	36.7
Expenditures Per Pupil	
(1974-75)	\$677.37
Bonded Indebtedness,	
June 30, 1976	\$3,879,000

Nonpublic Schools

Total Enrollment	320
Elementary	240
High School	80
Student-Teacher Ratio	21-1
Elementary	22-1
High School	20-1



Madisonville Community College



Madisonville State Vocational Technical School

Area Colleges and Universities

<u>Name</u>	<u>Location (Miles Distant)</u>	<u>Enrollment (Fall, 1975)</u>	<u>Highest Degree Conferred</u>
Madisonville Community College	Madisonville	624	Associate
Hopkinsville Community College	Hopkinsville (32)	1,215	Associate
Henderson Community College	Henderson (40)	672	Associate
Brescia College	Owensboro (43)	928	Baccalaureate
Kentucky Wesleyan College	Owensboro (43)	708	Baccalaureate
Indiana State University, Evansville Campus	Evansville, Indiana (46)	2,945	Academic and Professional
University of Evansville	Evansville, Indiana (46)	6,042	Academic and Professional

Vocational Schools

Nearest State School

Location	Madisonville State Vocational- Technical School
Curriculum	Madisonville Health and Personal Services Certified Lab Assistant Health Careers Medical Secretary Practical Nursing Respiratory Therapy Surgical Technician Industrial Education Auto Body Repair Auto Mechanics Carpentry Drafting Electronics (Communications) Industrial Electricity Machine Shop Mining Maintenance Mechanics Welding

Arrangements can be made to provide training in the specific production skills required by an industrial plant. Instruction may be conducted either in the vocational school or in the industrial plant, depending upon the desired arrangement and the availability of special equipment.

HEALTH

Local Medical Personnel

Physicians - 70

Dentists - 15

Hospitals

<u>General Hospital</u>	<u>Location</u>	<u>Beds</u>
Hopkins County Hospital, Inc.	Madisonville	272*

General hospital facilities - Emergency service, operating suites, recovery room, intensive care, coronary care, inhalation therapy, physical therapy, laboratory, radiology, nuclear medicine, obstetrics, ultrasonics, home health, ECG, EEG, EMG, psychiatric unit, pharmacy, family practice residency program, association with Pennyryle Area Health Education System

Medical staff - 65 physicians, 750 professional and support personnel

Other Medical Facilities

Trover Clinic - A diagnostic clinic with 60 physicians and 118 examination rooms at Madisonville and 2 physicians and 8 examination rooms at the branch office in Earlington.

Madisonville Mental Health Clinic

Ambulance Service

Cardinal Ambulance Service will begin 24-hour service to Hopkins County on January 1, 1977. The company will operate four county-owned ambulances.

*Construction of an addition to the hospital, which will expand the capacity to 401 beds, is scheduled to begin in the spring of 1977.

Nursing Homes

	<u>Number</u>	<u>Beds</u>
Extended care homes	3	250
Personal care homes	3	271

Public Health

Facility - Hopkins County Health Department
Staff - 1 health officer (part-time), 3 registered nurses,
3 public health environmentalists, 4 clerks

OTHER LOCAL FACILITIES

Communications

	<u>Madisonville</u>	<u>Earlington</u>
Telephone - Services -	South Central Bell Standard	South Central Bell Standard
Telegraph - Services -	Western Union Telephone and messenger	Western Union from Madisonville Telephone and messenger
Postal-U.S. Post Office		
Class -	First	Second
Mail received	Twice daily	Once daily
Mail dispatched -	Twice daily	Once daily
Newspapers -	Madisonville Messenger	
Daily (except Sunday) and circulation -	11,500	
Other papers received from -	Louisville, Kentucky; Nashville, Tennessee; Evansville, Indiana	Madisonville and Louisville, Kentucky; Nashville, Tennessee; Evansville, Indiana
Radio -	WFMW (AM-FM) WTTL (AM)	
Stations received from -	Owensboro, Henderson and Central City, Kentucky; Evansville, Indiana	Madisonville, Owens- boro, Henderson and Central City, Kentucky; Evansville, Indiana
Television -		
Cable service	Yes	Yes
Reception from -	Paducah and Bowling Green, Kentucky; Nashville, Tennessee; Evansville, Indiana	Paducah and Bowling Green, Kentucky; Nashville, Tennessee; Evansville, Indiana
Kentucky Educational Television -	Madisonville transmitter- Channel 35	Madisonville trans- mitter - Channel 35

Library Services

Public library - Hopkins County-Madisonville Public Library

Size collection - 23,961 volumes

Circulation, 1975 - 121,000

Services - Magazines, records, record player, filmstrip projector, slide projector, tape cassette player, tapes, story hour, book-mobile, newspapers

Private library - Madisonville Community College Library

Size collection - 20,000 volumes

Services - Newspapers, magazines, periodicals, records, cassette tape player, films and projectors, audio-visual equipment, copying services, New York Times on microfilm since 1954, Courier-Journal on microfilm since 1969, Wall Street Journal on microfilm since 1970

Religious Institutions

	<u>Madisonville</u>	<u>Earlington</u>
Number of churches -	47	10
Denominations -	AME-Zion, Apostolic Holiness, Assembly of God, Baptist, Catholic, Christian Science, Church of Christ, Church of God, Church of Jesus Christ of Latter Day Saints, Church of the Nazarene, Cumberland Presbyterian, Episcopal, General Baptist, Jehovah's Witnesses, Life Temple Church, Light House Mission, Lutheran, Methodist, Pentecostal, Presbyterian, Primitive Baptist, Seventh Day Adventist	AME-Zion, Assembly of God, Baptist, Catholic, Christian, General Baptist, Methodist

Nearest Synagogue - Hopkinsville, 32 miles south
Congregation - Adath Israel (reform)



Madisonville Building and Loan Association



Peoples Bank and Trust Co.



Hopkins County First Federal Savings and Loan Association



The Kentucky Bank and Trust Co.



Farmers Bank & Trust Co.

Financial Institutions

<u>Banks</u>	<u>Assets</u>	<u>Deposits</u>	<u>Statement Date</u>
Farmer s Bank & Trust Company	\$44,675,432.12	\$39,607,892.32	6/30/76
The Kentucky Bank and Trust Company	57,568,826.04	51,246,676.48	6/30/76
Peoples Bank and Trust Company (branch in Earlington)	44,722,581.56	40,464,895.81	6/30/76

<u>Savings and Loan Associations</u>	<u>Assets</u>	<u>Shared Accounts</u>	<u>Statement Date</u>
First Federal Savings and Loan Association	\$32,932,543.67	\$30,433,746.22	12/31/75
Madisonville Building and Loan Association	13,788,766.68	12,656,376.63	6/30/76

Hotels and Motels

Total number - 8
Total units - 214

Clubs and Organizations

Madisonville

Business and Civic - Greater Madisonville Area Chamber of Commerce, Jaycees, Kiwanis, Lions, Medical Society, Ministerial Association, Retail Merchants Association, Rotary, Hopkins County Bar Association, Hopkins County Education Association, Community Improvement Foundation

Fraternal - American Legion, Eagles, Elks, IOOF, Masons, Moose, Shrine, VFW

Women's - Business and Professional Women's Club, Women's Book Club, Women's Club, Women's Medical Society Auxiliary, American Legion Auxiliary, Women of the Moose, VFW Auxiliary, DAR, Eastern Star, Past Matrons, Jaycettes, Daughters of the Nile, Beta Sigma Phi, Prosody Club, Madisonville Council of Garden Clubs (6 clubs), Panhellenic, YWCA, Ladies Golf Associations, Hopkins County Women's Republican Club, Hopkins County Democratic Women's Club, Newcomers Club

Youth - Boy Scouts, Girl Scouts, Cub Scouts, Brownies, FFA, FHA, 4-H, FTA, FAA, Beta Club, FBLA, Teens Who Care, Key Club, Interact Club, Young Democrats Club, Young Republicans Club

Other - Association for Childhood Education, Madisonville Music Society, PTA, Vintage Vehicle Voyagers, Footlight Players, Pennyrite Performing Arts, Chautauqua Club, Dodeka Study Club, Hopkins County Historical Society, Gun Club, Riding Club, Archery Club

Earlington

Business and Civic - Earlington Civic Club, Ministerial Association

Fraternal - American Legion, Eagles, Masons

Women's - Business and Professional Women's Club, Garden Club, Homemaker's Club

Youth - Boy Scouts, Girl Scouts, Cub Scouts, 4-H, FTA, Beta Club, Key Club

Other - Young-At-Heart Club (Senior Citizens)



Madisonville Municipal Clubhouse



Residential Section



Rizpah Temple

RECREATION

Local

Madisonville, Earlington and the surrounding area offer unlimited recreational opportunities. Madisonville, with 480 acres of park land, provides year-round supervised recreational programs for all ages. Facilities at the 185-acre Municipal Park include a golf course with 9 holes to play, clubhouse containing a golf pro shop and a large clubroom, olympic-size swimming pool, ball park, basketball courts, playgrounds, tennis courts, and picnic areas. Supervised baseball leagues, football teams, tennis clinics, and golf clinics are also sponsored by the city and local civic groups. Other recreational facilities include one indoor and one outdoor theater, a 20-lane bowling alley, a YMCA, and a Youth Athletic Association Sports complex with eight baseball diamonds on a 31-acre tract.

The Loch Mary Lake, a 147-acre lake at Earlington, not only offers boating and fishing, but also has a city park with new playground equipment, a picnic area and boat ramp. Earlington also has three tennis courts, outdoor basketball courts, baseball diamond, and three supervised baseball leagues.

Two private country clubs are located in Madisonville. The Madisonville Country Club, located on a 170-acre site at the southern edge of the city, has a clubhouse, 18-hole golf course, olympic size swimming pool and bathhouse, and tennis courts. Lakeshore Country Club is located on 190 acres on the shores of Lake Pee Wee and present facilities include a clubhouse, 9-hole golf course and driving range, double olympic size swimming pool and a bathhouse, tennis courts, and boat dock.

Madisonville Community College serves as an important source of cultural events. The Pennyrile Performing Arts, presenting the Community Concert Series, the Children's Theatre, and the Footlight Players, Inc., offer additional entertainment.

Area (Within 60 miles)

Several of the state's finest resort parks and recreational areas are located within easy driving distance of Madisonville and Earlington.

Pennyrile Forest State Resort Park, Kentucky Dam Village State Resort Park, and Lake Barkley State Resort Park are full vacation resort parks with overnight lodging and dining service. Lake Malone State Park

and John James Audubon State Park offer camping facilities in addition to other attractions. Land Between the Lakes National Recreation Area, a 170,000-acre woodland formed into a peninsula by Kentucky Lake and Lake Barkley, is a major area for outdoor recreation, conservation, and environmental learning.

The Jefferson Davis Monument State Shrine is the site of the birthplace-farm of Confederate President Jefferson Davis. This 351-foot obelisk is the fourth highest in the United States.

COMMUNITY IMPROVEMENTS

Recent:

1. The capacity of the Madisonville water treatment plant has been increased to 7,000,000 gallons per day with the installation of new filter media.
2. A new Hopkins County-Madisonville Public Library has been constructed.
3. The Penny Pincher, a weekly advertising publication, has begun operations.
4. Thirty-two new businesses established in 1975.
5. Cardinal Ambulance Service has been contracted to provide 24-hour ambulance service to Hopkins County, beginning January 1, 1977.
6. The Earlington Emergency Squad, which was formed in 1975, has purchased a new emergency vehicle for rescue operations.
7. The Madisonville Fire Department has purchased a new 1,500 gpm pumper and opened another branch fire station.

Underway:

1. GTE Sylvania is constructing a plant that will manufacture the rod portion of mining bits.
2. A 420-acre tract of land, located in the northern city limits of Earlington, is under development. Approximately 100 acres of this land will be used as an industrial park.
3. A 201 Facilities Study for Hopkins County was completed in April, 1976. The present sewage treatment plant in Madisonville will be upgraded, while the Earlington plant will be phased out. The projected completion date is December, 1977.
4. South Main is being widened to four lanes from Lake Street in Madisonville to the northern city limits of Earlington.

5. The former Holiday Inn has been donated to the Madisonville Community College. The school plans to convert the motel into a dormitory and office building.

6. Two new shopping centers are under construction.

Planned:

1. The Madisonville Municipal Airport plans to extend the runway to 5,000 feet, install RAILS and VASI 4 lighting systems and construct a parallel taxi runway and additional airplane parking space.

2. The Hopkins County Hospital, Inc., will begin construction on a new hospital wing in the spring of 1977 which will increase the capacity to 401 beds.

3. The Madisonville Light & Water Plant plans to extend a 24-inch water transmission line to the Green River.

4. The Earlington Water Works plans to completely replace the water distribution lines, meters, and hydrants; to repair the sedimentation basin at the treatment plant; and reconstruct the flocculation and filtration systems, thereby increasing the plant capacity to 600,000 gallons per day.

5. The Hopkins County School System plans to construct a new middle school to accommodate approximately 400 students and also six additional classrooms at an elementary school. In addition, the school board plans to purchase the school transportation system, which is now privately owned and operated.

6. Two apartment complexes are planned.

HISTORY

Hopkins County lies in the Audubon-Pennyrile area of western Kentucky. Pond River, a tributary of Green River, flows along its eastern boundary and Tradewater River flows along the western border. Green River, which is navigable, touches the county on the extreme northeast. The county's 553 square miles of territory varies from flat in the river bottoms to rolling and hilly. There are extensive deposits of coal and petroleum in the county, especially in the western two-thirds of it. Some tracts of timber of the finest quality are scattered throughout the area.

Hopkins became Kentucky's forty-ninth county in 1806, its territory taken from Henderson County. It was named for General Samuel Hopkins, a native of Virginia who settled on the Green River in Kentucky. A distinguished Revolutionary War veteran, Hopkins served several terms in the State Legislature and one term in the U. S. Congress.

Madisonville, the county seat, was named for President James Madison. Located in the center of a plateau between the Pond and Tradewater Rivers, the town was built on land donated by Daniel McGary and Solomon Silkwood. Incorporated in 1810, the city has grown steadily to an estimated population of 16,324 in 1973.

Earlington, just 4 miles south of Madisonville, had an estimated population of 2,177 in 1973; Dawson Springs, on the county's southwestern border had 2,982; and Morton's Gap, 3 miles south of Earlington, had 1,173.

In 1810, four years after its formation, Hopkins County had a population of 2,964. This climbed to 38,815 in 1950 and has since leveled off at 38,458 in 1960 and 38,167 in 1970. However, an estimated population of 42,900 was projected for Hopkins County in 1975.

The total number of Hopkins County residents employed in 1975 averaged 19,210, with nonagricultural jobs accounting for 18,650 workers. Manufacturing employers in the county reported 3,120 workers; mining and quarrying 2,700; construction firms 760; transportation, communications and public utilities 1,190; wholesale and retail trade, 2,490; finance, insurance, and real estate 420; and employees in the service industries 3,040. Largest of the county's firms are: General Electric Company, which makes fluorescent lamp ballasts; The Enro Shirt Company, Inc., making dress and sport shirts; York Division of Borg-Warner Corporation, which produces air conditioning systems and furnaces; and Goodyear Tire and Rubber Company, producing industrial tires. Hopkins County ranks high among the producers of coal and petroleum in the state.