

1986

Industrial Resources: Hardin County - Elizabethtown

Kentucky Library Research Collections
Western Kentucky University, spcol@wku.edu

Follow this and additional works at: https://digitalcommons.wku.edu/hardin_cty

 Part of the [Business Administration, Management, and Operations Commons](#), [Growth and Development Commons](#), and the [Infrastructure Commons](#)

Recommended Citation

Kentucky Library Research Collections, "Industrial Resources: Hardin County - Elizabethtown" (1986). *Hardin County*. Paper 27.
https://digitalcommons.wku.edu/hardin_cty/27

This Report is brought to you for free and open access by TopSCHOLAR®. It has been accepted for inclusion in Hardin County by an authorized administrator of TopSCHOLAR®. For more information, please contact topscholar@wku.edu.

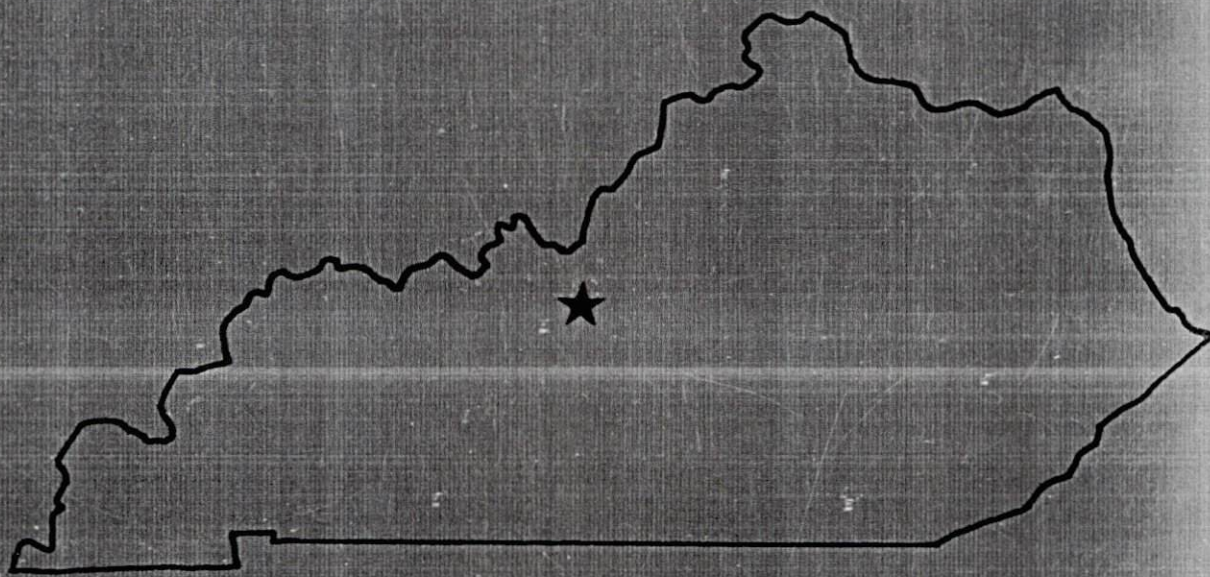
IR

459

Hardin County

RESOURCES FOR ECONOMIC DEVELOPMENT

Elizabethtown

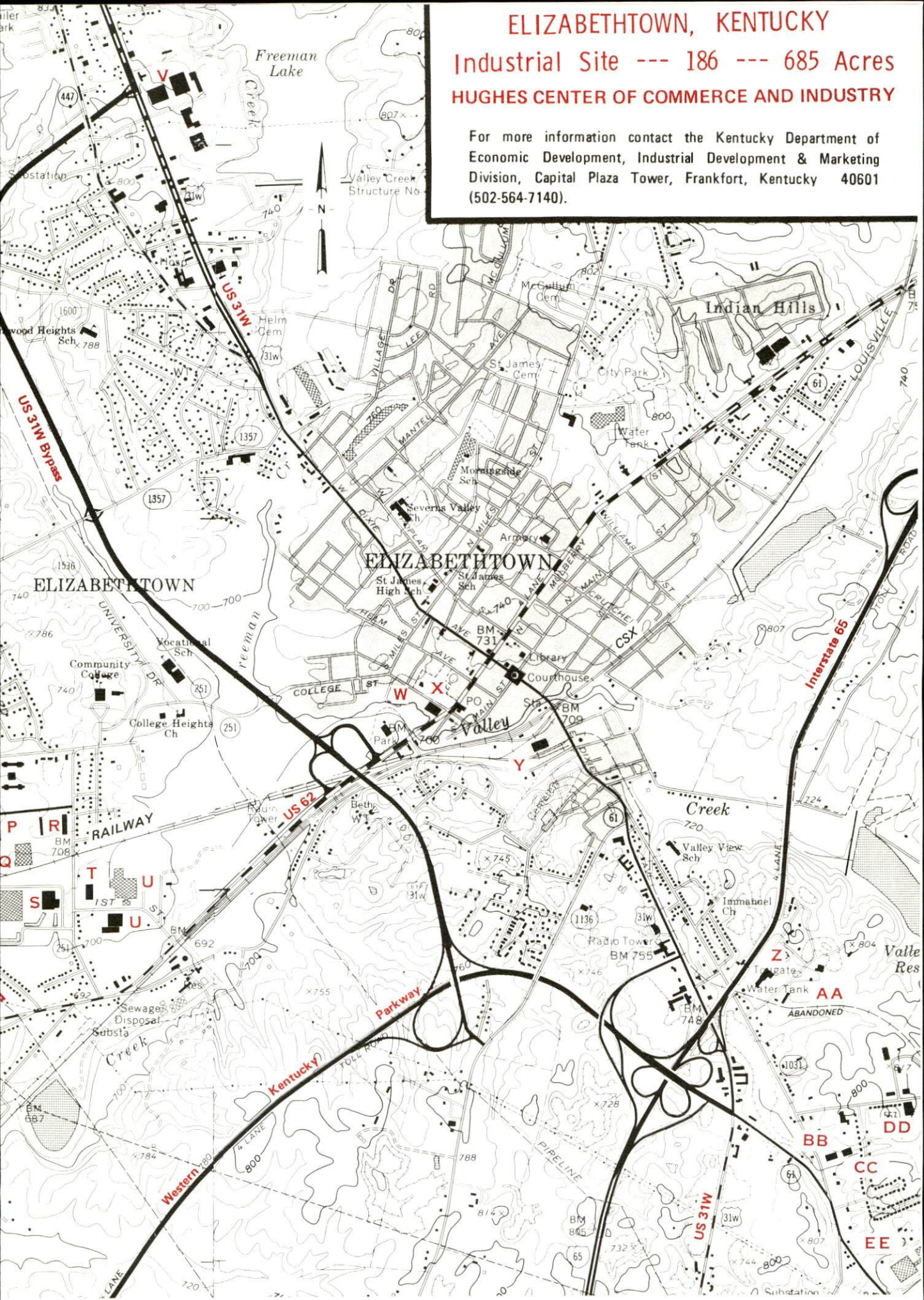


KENTUCKY
The business environment is right.

ELIZABETHTOWN, KENTUCKY

Industrial Site --- 186 --- 685 Acres
HUGHES CENTER OF COMMERCE AND INDUSTRY

For more information contact the Kentucky Department of
Economic Development, Industrial Development & Marketing
Division, Capital Plaza Tower, Frankfort, Kentucky 40601
(502-564-7140).



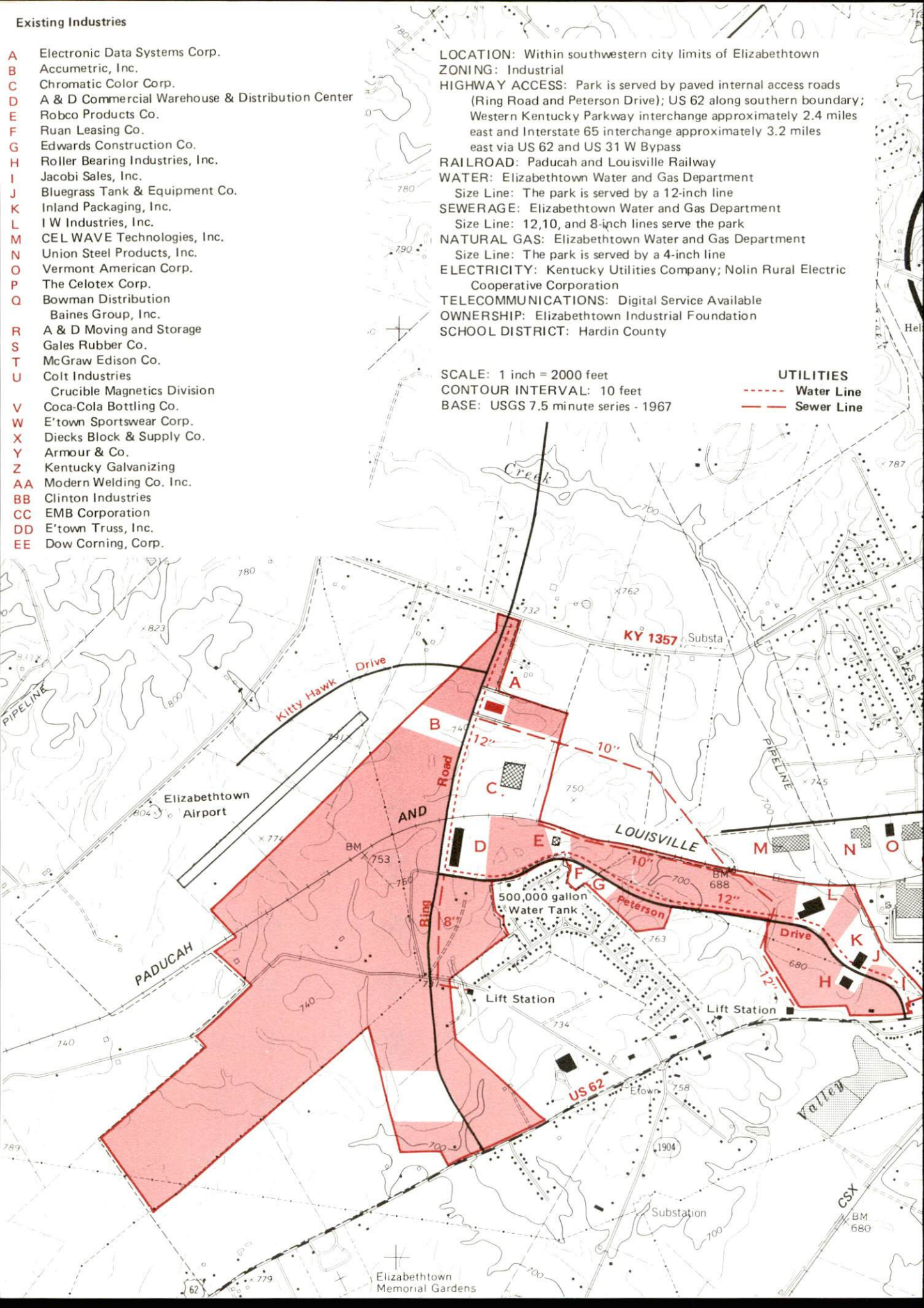
Existing Industries

- A Electronic Data Systems Corp.
- B Accumetric, Inc.
- C Chromatic Color Corp.
- D A & D Commercial Warehouse & Distribution Center
- E Robco Products Co.
- F Ruan Leasing Co.
- G Edwards Construction Co.
- H Roller Bearing Industries, Inc.
- I Jacobi Sales, Inc.
- J Bluegrass Tank & Equipment Co.
- K Inland Packaging, Inc.
- L IW Industries, Inc.
- M CEL WAVE Technologies, Inc.
- N Union Steel Products, Inc.
- O Vermont American Corp.
- P The Celotex Corp.
- Q Bowman Distribution
- R Baines Group, Inc.
- S A & D Moving and Storage
- T Gales Rubber Co.
- U McGraw Edison Co.
- V Colt Industries
- W Crucible Magnetics Division
- X Coca-Cola Bottling Co.
- Y E'town Sportswear Corp.
- Z Diecks Block & Supply Co.
- AA Armour & Co.
- BB Kentucky Galvanizing
- CC Modern Welding Co. Inc.
- DD Clinton Industries
- EE EMB Corporation
- EE E'town Truss, Inc.
- EE Dow Corning, Corp.

LOCATION: Within southwestern city limits of Elizabethtown
ZONING: Industrial
HIGHWAY ACCESS: Park is served by paved internal access roads (Ring Road and Peterson Drive); US 62 along southern boundary; Western Kentucky Parkway interchange approximately 2.4 miles east and Interstate 65 interchange approximately 3.2 miles east via US 62 and US 31 W Bypass
RAILROAD: Paducah and Louisville Railway
WATER: Elizabethtown Water and Gas Department
Size Line: The park is served by a 12-inch line
SEWERAGE: Elizabethtown Water and Gas Department
Size Line: 12,10, and 8-inch lines serve the park
NATURAL GAS: Elizabethtown Water and Gas Department
Size Line: The park is served by a 4-inch line
ELECTRICITY: Kentucky Utilities Company; Nolin Rural Electric Cooperative Corporation
TELECOMMUNICATIONS: Digital Service Available
OWNERSHIP: Elizabethtown Industrial Foundation
SCHOOL DISTRICT: Hardin County

SCALE: 1 inch = 2000 feet
CONTOUR INTERVAL: 10 feet
BASE: USGS 7.5 minute series - 1967

UTILITIES
 - - - - - Water Line
 ——— Sewer Line



JUN 13 1986

RESOURCES FOR ECONOMIC DEVELOPMENT

ELIZABETHTOWN, KENTUCKY

Prepared by
The Kentucky Department of Economic Development
Division of Research and Planning
in cooperation with
The Elizabethtown-Hardin County Chamber of Commerce
and
The Elizabethtown Industrial Foundation

1986

Program manager - Andrew Dennis; research - Bill Morris; clerical - Bobbi Graves; graphics - Frank Ferrante, Tony Cecconi, Robert Owens; cartography - Site Evaluation Branch, Division of Industrial Development and Marketing. Cost of printing paid from state funds.

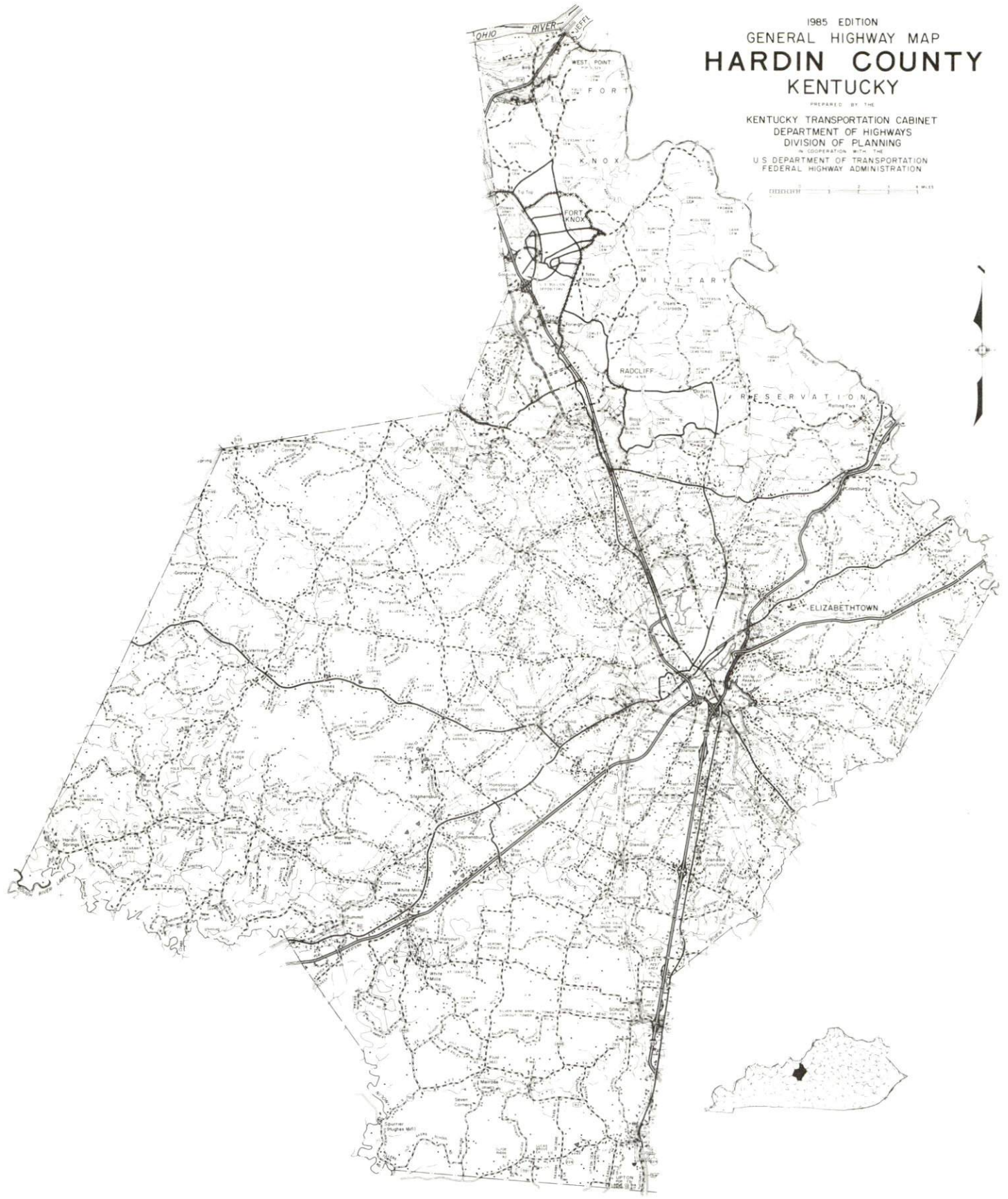
TABLE OF CONTENTS

<u>Chapter</u>	<u>Page</u>
INDUSTRIAL SITES	i
ELIZABETHTOWN, KENTUCKY - A RESOURCE PROFILE	1
LABOR MARKET STATISTICS	2
Population	2
Population Projections	2
Labor Force Characteristics of Residents, 1984	3
Selected Components of Nonagricultural Employment, by Place of Work, 1984	3
Per Capita Personal Income	3
Estimated Male Labor Supply	4
Estimated Female Labor Supply	4
Average Weekly Wages By Industry, by Place of Work, 1984	5
EXISTING INDUSTRY	7
Major Elizabethtown Manufacturing Firms, Their Products and Employment	7
Labor Organizations in Manufacturing Firms	9
Industrial Services	10
TRANSPORTATION	11
Rail	11
Highways	12
Truck Service	12
Air	14
Air Express Service	15
Water	15
POWER AND FUEL	16
Electricity	16
Natural Gas	16
Other Fuels	17
WATER AND SEWERAGE	18
Public Water Supply	18
Sewerage	20

<u>Chapter</u>	<u>Page</u>
CLIMATE	21
LOCAL GOVERNMENT	22
Structure	22
Planning and Zoning	22
Local Fees and Licenses	22
State and Local Property Taxes	23
Safety	24
Police	24
Fire	24
Rescue Service	24
Refuse Collection and Disposal	24
EDUCATION	25
Public Schools	25
Nonpublic Schools	25
Area Colleges and Universities	26
Vocational Schools	27
HEALTH	28
Local Medical Personnel	28
Hospitals	28
Other Medical Facilities	28
Ambulance Service	28
OTHER LOCAL FACILITIES	29
Communications	29
Library Services	29
Religious Institutions	30
Financial Institutions	30
Hotels and Motels	31
RECREATION	32
COMMUNITY IMPROVEMENTS	35

1985 EDITION
GENERAL HIGHWAY MAP
HARDIN COUNTY
KENTUCKY

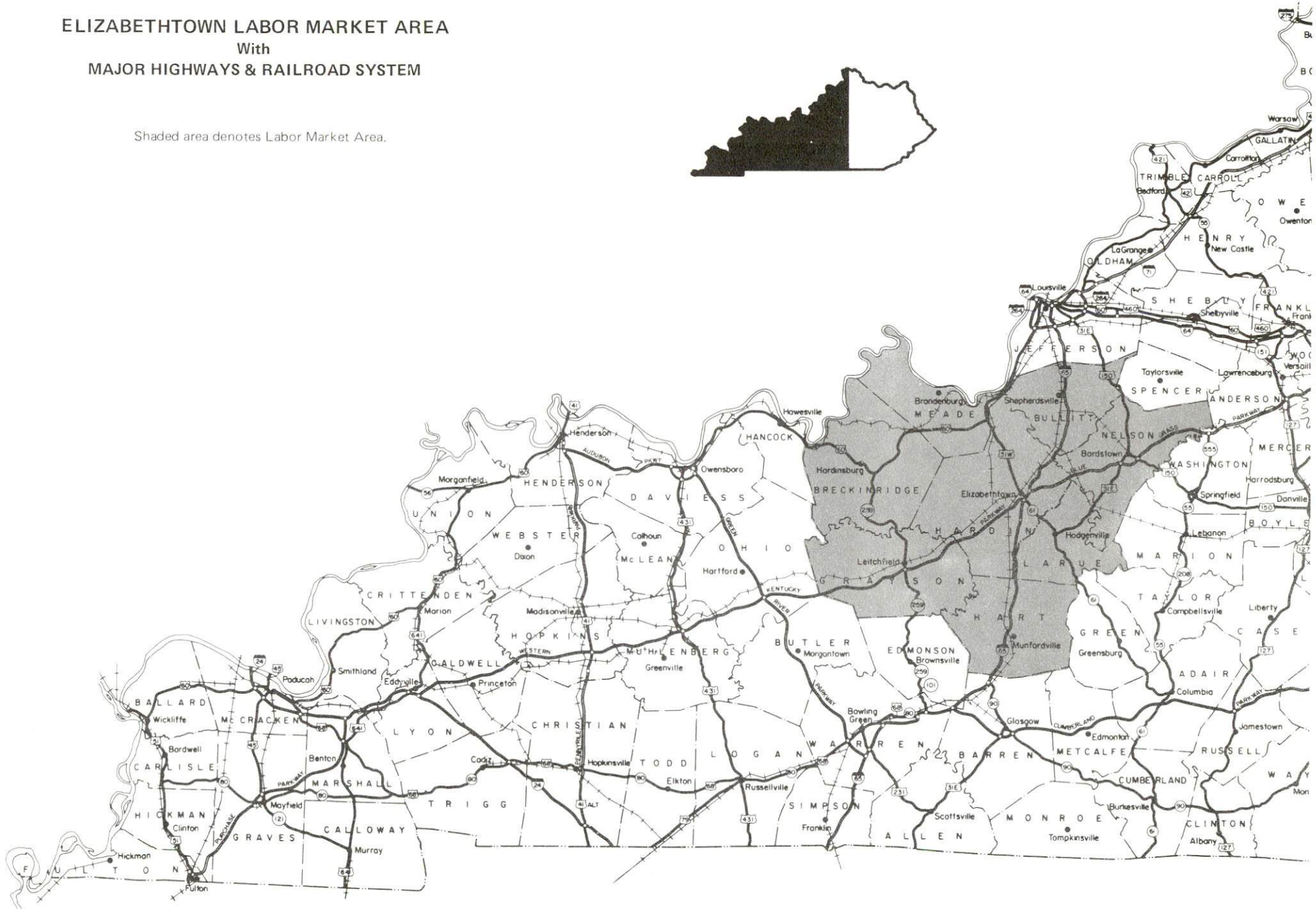
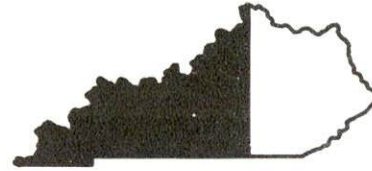
PREPARED BY THE
KENTUCKY TRANSPORTATION CABINET
DEPARTMENT OF HIGHWAYS
DIVISION OF PLANNING
IN COOPERATION WITH THE
U.S. DEPARTMENT OF TRANSPORTATION
FEDERAL HIGHWAY ADMINISTRATION



ELIZABETHTOWN LABOR MARKET AREA

With
MAJOR HIGHWAYS & RAILROAD SYSTEM

Shaded area denotes Labor Market Area.



ELIZABETHTOWN, KENTUCKY - A RESOURCE PROFILE

Elizabethtown, the county seat of Hardin County, is located in north central Kentucky at the intersection of several major highway systems. The city is situated only 44 miles south of Louisville, Kentucky; 84 miles southwest of Lexington, Kentucky; 131 miles northeast of Nashville, Tennessee; and 142 miles southwest of Cincinnati, Ohio. The city had a 1984 estimated population of 16,872 persons.

Hardin County, covering a land area of 629 square miles, is located primarily in Kentucky's Mississippian Plateaus Region, an area of gently rolling plains and uplands. The topography of the county is diverse, ranging from limestone plains in the eastern and central portions of the county, to steep high ridges further west. The county had a 1984 estimated population of 90,231 persons.

The Economic Framework - The total number of Hardin County residents employed in 1984 averaged 26,860, with nonagricultural jobs accounting for 26,050 workers. Manufacturing firms in the county reported 3,930 employees; wholesale and retail trade provided 5,880 jobs; 2,180 people were employed in service occupations; state and local government accounted for 3,040 employees; and contract construction firms provided 820 jobs.

Labor Supply - There is a current estimated labor supply of 13,590 men and 14,940 women available for industrial jobs in the labor market area. In addition, from 1986 through 1990, 11,040 young men and 10,490 young women in the area will become 18 years of age and potentially available for industrial jobs.

Transportation - CSX Transportation and the Paducah and Louisville Railway provide main line rail service to Elizabethtown. Elizabethtown is served by Interstate Highway 65, the Bluegrass Parkway, the Western Kentucky Parkway, U.S. Highways 31W and 62, and Kentucky Route 61, all of which are "AAA"-rated trucking highways. Of the 29 trucking companies which provide interstate and/or intrastate service to Elizabethtown, seven maintain local terminals. The nearest scheduled commercial airline service is located at Louisville's Standiford Field, 39 miles north of Elizabethtown. Addington Field, a local airport 4 miles west of Elizabethtown, has a paved 5,000-foot runway. The nearest navigable waterway is the Ohio River, where a 9-foot navigation channel is maintained. Riverport facilities are available on the Ohio River near Louisville, 44 miles north of Elizabethtown.

Power and Fuel - Electric power is provided to Elizabethtown and portions of Hardin County by Kentucky Utilities Company. Hardin County is also served by the Nolin Rural Electric Cooperative Corporation and the Louisville Gas and Electric Company. Natural gas service is provided to Elizabethtown by Elizabethtown Water and Gas Department. There are three distributors of propane and six distributors of fuel oil located in Elizabethtown.

Education - The Elizabethtown Independent School System and the Hardin County School System are each accredited by the Southern Association of Colleges and Schools. Six nonpublic schools also operate in Hardin County. Elizabethtown Community College, a unit of the University of Kentucky Community College System, had a Fall 1985 enrollment of 2,049 students. Vocational training is available locally at the Elizabethtown State Vocational-Technical School.

LABOR MARKET STATISTICS

The Elizabethtown Labor Market Area includes Hardin County and the adjoining Kentucky counties of Breckinridge, Bullitt, Grayson, Hart, Larue, Meade and Nelson.

POPULATION				
Area	1984*	1980	1970	Percent Nonwhite 1980
Elizabethtown	16,872	15,380	11,748	9.5
Labor Market Area	254,074	247,740	202,670	N/A
Hardin County	90,231	88,917	78,421	14.7
Breckinridge County	16,632	16,861	14,789	3.8
Bullitt County	44,760	43,346	26,090	0.8
Grayson County	22,281	20,854	16,445	0.6
Hart County	16,694	15,402	13,980	8.1
Larue County	12,002	11,922	10,672	4.7
Meade County	22,809	22,854	18,796	9.0
Nelson County	28,665	27,584	23,477	6.6

* Population estimates.

Note: The 1980 city counts of population by race are provisional.

Sources: U.S. Department of Commerce, Bureau of the Census, 1980 Census of Population and Housing, March 1981; 1980 Census of Population, Number of Inhabitants. University of Louisville, Urban Studies Center, Population Unit, October 1985; Kentucky Population Research Notes, Issue Number One, May 1985.

POPULATION PROJECTIONS				
Area	1990	1995	2000	2010
Labor Market Area	276,894	310,292	330,060	375,299
Hardin County	91,710	108,160	116,244	133,040
Breckinridge County	18,376	19,442	20,232	21,526
Bullitt County	56,388	65,273	73,270	87,280
Grayson County	24,573	26,682	28,374	31,314
Hart County	17,007	17,842	18,490	19,488
Larue County	12,956	13,595	14,020	14,639
Meade County	24,284	25,454	26,787	29,499
Nelson County	31,600	33,844	35,643	38,513

Source: University of Louisville, Urban Studies Center, Population Research Unit, How Many Kentuckians: Population Forecasts, 1980-2020, the 1984 Edition, September 1984.

LABOR FORCE CHARACTERISTICS OF RESIDENTS, 1984

	<u>Hardin County</u>	<u>Labor Market Area</u>
Civilian Labor Force	28,832	101,500
Employment	26,864	92,165
Agricultural	816	5,604
Nonagricultural	26,048	86,561
Unemployment	1,968	9,335
Rate of Unemployment (%)	6.8	9.2

Source: Kentucky Cabinet for Human Resources, Kentucky Labor Force Estimates, Annual Averages, 1984.

SELECTED COMPONENTS OF NONAGRICULTURAL EMPLOYMENT,
BY PLACE OF WORK, 1984

	<u>Hardin County</u>	<u>Labor Market Area</u>
All Industries (total)	17,573	41,294
Manufacturing	3,926	11,154
Wholesale & Retail Trade	5,877	11,453
Services	2,176	4,849
State/Local Government	3,040	7,728
Contract Construction	817	1,978

Note: Excludes domestic workers, railway workers, certain nonprofit corporations, majority of federal government workers, and self-employed workers.

Source: Kentucky Cabinet for Human Resources, Average Monthly Workers Covered by Kentucky Unemployment Insurance Law, 1984.

PER CAPITA PERSONAL INCOME

<u>Area</u>	<u>1979</u>	<u>1983</u>	<u>Percent Change</u>
Hardin County	\$ 6,156	\$ 8,630	40.2
Labor Market Area Range	\$ 5,139 - 6,649	\$ 6,412 - 8,630	N/A
Kentucky	7,124	9,396	31.9
U. S.	8,651	11,687	35.1

Sources: U.S. Department of Commerce, Bureau of Economic Analysis; Commerce News, August 28, 1984; May 7, 1985. Kentucky Economic Information System, June 1985.

ESTIMATED MALE LABOR SUPPLY
ELIZABETHTOWN LABOR MARKET AREA

Area	Current			Not in Labor Force	Future
	Total Male	Unemployed	Under- employed		Becoming 18 years of age 1986 thru 1990
Labor Market					
Area*	13,591	5,489	6,853	1,249	11,039
Hardin	4,122	967	3,155	0	3,272
Breckinridge	1,211	561	515	135	722
Bullitt	1,904	1,026	878	0	2,625
Grayson	1,580	962	618	0	923
Hart	1,510	357	454	699	631
Larue	601	301	214	86	476
Meade	861	285	399	177	1,128
Nelson	1,802	1,030	620	152	1,262

ESTIMATED FEMALE LABOR SUPPLY
ELIZABETHTOWN LABOR MARKET AREA

Area	Current			Not in Labor Force	Future
	Total Female	Unemployed	Under- employed		Becoming 18 years of age 1986 thru 1990
Labor Market					
Area*	14,940	3,846	5,471	5,623	10,489
Hardin	4,567	1,001	1,938	1,628	3,113
Breckinridge	1,241	369	348	524	690
Bullitt	2,405	673	1,031	701	2,461
Grayson	869	349	520	0	871
Hart	1,609	309	313	987	592
Larue	560	134	178	248	444
Meade	2,039	315	521	1,203	1,017
Nelson	1,650	696	622	332	1,301

* Additional workers may be drawn from other nearby counties.

Note: Unemployed - persons unemployed and actively seeking work;
Underemployed - persons employed but working only 14 to 26 weeks per year;
Not in Labor Force - represents the number of persons who would enter the labor force if suitable employment were available (based on the assumption that persons in Kentucky would like to participate in the labor force in the same proportion that they do nationally).

Sources: Kentucky Cabinet for Human Resources, Kentucky Labor Supply Estimates by County, 1984. Kentucky Department of Economic Development, Future Labor Supply Becoming 18 Years of Age, 1986 thru 1990.

AVERAGE WEEKLY WAGES BY INDUSTRY,
BY PLACE OF WORK, 1984

	<u>Hardin County</u>	<u>Breckinridge County</u>	<u>Bullitt County</u>	<u>Grayson County</u>
All Industries	\$271.05	\$228.48	\$272.86	\$235.52
Mining & Quarrying	344.71	229.12	*	333.13
Contract Construction	295.36	231.89	242.69	218.67
Manufacturing	367.51	228.28	394.10	255.44
Transportation, Communications & Public Utilities	329.86	344.33	303.07	307.40
Wholesale & Retail Trade	183.15	178.46	171.18	183.99
Finance, Insurance & Real Estate	275.53	301.57	243.15	263.30
Services	242.92	187.79	189.24	173.24
State/Local Government	311.70	267.35	268.46	248.72
Other	241.70	*	130.75	202.18
	<u>Hart County</u>	<u>Larue County</u>	<u>Meade County</u>	<u>Nelson County</u>
All Industries	\$229.43	\$216.97	\$318.21	\$277.02
Mining & Quarrying	*	0	*	387.16
Contract Construction	277.11	226.33	313.17	292.57
Manufacturing	266.28	227.24	*	395.14
Transportation, Communications & Public Utilities	214.35	384.96	420.63	388.62
Wholesale & Retail Trade	180.86	169.68	162.30	172.46
Finance, Insurance & Real Estate	267.74	268.10	232.63	240.38
Services	183.86	143.00	129.68	158.91
State/Local Government	241.36	260.15	278.53	286.26
Other	243.88	160.92	241.82	88.71

* Not disclosed.

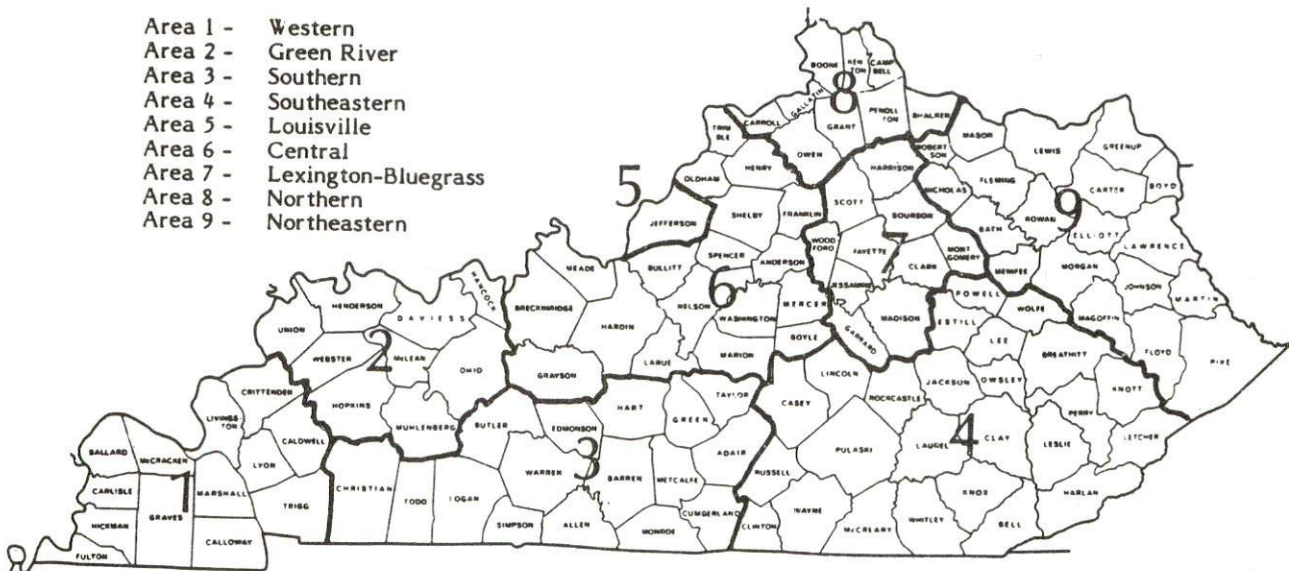
Note: Excludes domestic workers, railway workers, certain nonprofit corporations, majority of federal government workers, and self-employed workers.

Sources: Kentucky Cabinet for Human Resources, Average Weekly Wages of Workers Covered by Kentucky Unemployment Insurance Law, 1984.

Occupational wage rates for specific industries are usually not available to most government agencies, and wage data furnished to state employment agencies by individual industrial employers are protected from disclosure by federal law. The most reliable up-to-date wage information can be obtained by direct contact with local employers.

Associated Industries of Kentucky, a voluntary organization of Kentucky businesses, regularly collects occupational wage rates and fringe benefits data from participating member firms. Data are compiled for over 127 clearly defined office, production, and service occupations. Tabulations are published for nine geographical areas of Kentucky, as shown on the map below. It should be noted that the data may be weighted by the preponderance of firms in the larger cities and may be somewhat higher than the rates paid in the smaller communities. Data from these tabulations are available, upon request, from the Kentucky Department of Economic Development, Frankfort, Kentucky 40601.

- Area 1 - Western
- Area 2 - Green River
- Area 3 - Southern
- Area 4 - Southeastern
- Area 5 - Louisville
- Area 6 - Central
- Area 7 - Lexington-Bluegrass
- Area 8 - Northern
- Area 9 - Northeastern



Associated Industries of Kentucky Area Wage Surveys

EXISTING INDUSTRY

MAJOR ELIZABETHTOWN MANUFACTURING FIRMS, THEIR PRODUCTS AND EMPLOYMENT*

<u>Firm</u> (Establishment date)	<u>Product</u>	<u>Employment</u>			<u>Labor Unions</u>
		<u>Total</u>	<u>Male</u>	<u>Female</u>	
Accumetric, Inc. (1970)	Primers; industrial adhesives; metering, mixing and dispensing equipment	46	--	--	Chemical Workers**
Cel Wave Technologies, Inc. (1974)	Telephone cable	217	163	54	Electronic Workers, IUE**
The Celotex Corporation (1971)	Hytec iso- cyanurate roof insulation	53	40	13	Paper- workers**
Chromatic Color Corporation (1980)	Pigments for printing ink industry	126	--	--	
Coca-Cola Bottling Company (1920)	Soft drinks	190	160	30	
Colt Industries, Crucible Magnetics Division (1965)	Ceramic alnico and crucore magnets	500	400	100	Electronic Workers, IUE**
Cooper Industries, Bussmann Division (1955)	Electrical and electronic fuses	308	66	242	Electronic Workers, IUE**
Dow Corning Corporation (1963)	Silicone sealants	252	191	61	Chemical Workers**

(Continued)

<u>Firm</u> (Establishment date)	<u>Product</u>	<u>Employment</u>			<u>Labor Unions</u>
		<u>Total</u>	<u>Male</u>	<u>Female</u>	
EMB Corporation (1973)	Motor start relays, snap switches, special use switches	80	9	71	
E-Town Sportswear Corporation (1960)	Men's slacks	464	47	417	Clothing and Textile Workers**
Gates Rubber Company, Auto Belt & Hose Division (1964)	Auto V-belts, curved auto hose, urethane polyflex belts	470	--	--	Electronic Workers, IUE; Rubber Workers**
Gates Rubber Company, Industrial Belt & Hose Division (1964)	Urethane industrial belts	110	--	--	
I W Industries, Inc. (1981)	Rebuild heavy duty industrial equipment, weldments, fabrication shop	56	54	2	
J.B.'s Cabinet Shop, Inc. (1955)	Wood cabinets	54	44	10	
Kentucky Galvanizing Company, Inc. (1968)	Guardrails and posts, steel fabrication, hot dip galvanizing	49	46	3	
News Enterprise, Inc. (1969)	Newspaper, commercial printing	106	38	68	
Scotty's Paving (1949)	Asphalt	50	49	1	

(Continued)

<u>Firm (Establishment date)</u>	<u>Product</u>	<u>Employment</u>			<u>Labor Unions</u>
		<u>Total</u>	<u>Male</u>	<u>Female</u>	
Union Steel Products, Inc. (1971)	Refrigerator shelves, freezer baskets, custom wire parts	82	56	26	Steelworkers**
Vermont American Corporation, Magna Division (1976)	Screwdriver bits and holders, sockets and nut runners	122	97	25	Aluminum, Brick and Glass Workers**
Vulcan Materials (1977)	Crushed stone	50	49	1	

* Firms with 40 or more employees.

** See Labor Organizations below.

Sources: Kentucky Department of Economic Development, Division of Research and Planning; Elizabethtown-Hardin County Chamber of Commerce.

LABOR ORGANIZATIONS IN MANUFACTURING FIRMS

<u>Union</u>	<u>Representing workers at:</u>
Aluminum, Brick and Glass Workers International Union, AFL-CIO	Vermont American Corporation, Magna Division
Amalgamated Clothing and Textile Workers Union, AFL-CIO	E-Town Sportswear Corporation
International Brotherhood of Teamsters, Chauffeurs, Warehousemen and Helpers of America	Armour and Company
International Chemical Workers Union, AFL-CIO	Accumetric, Inc.; Dow Corning Corporation
International Union of Electronic, Electrical, Technical, Salaried and Machine Workers, AFL-CIO	Cel Wave Technologies, Inc.; Colt Industries, Crucible Magnetics Division; Cooper Industries, Bussmann Division; Gates Rubber Company, Auto Belt & Hose Division
United Paperworkers International Union, AFL-CIO	The Celotex Corporation

(Continued)

<u>Union</u>	<u>Representing workers at:</u>
United Rubber, Cork, Linoleum and Plastic Workers of America, AFL-CIO	Gates Rubber Company, Auto Belt & Hose Division
United Steelworkers of America, AFL-CIO	Union Steel Products, Inc.

INDUSTRIAL SERVICES

<u>Types of Services</u>	<u>Location</u>	<u>Mileage from Elizabethtown</u>
Custom Plastics Producers	Mt. Washington	35
	Fairdale	39
	Springfield	43
	Louisville	44
Electric Motor Repair	Elizabethtown	-
Grinding, Precision & Tool	Louisville	44
Heat Treating Facilities	Louisville	44
Industrial Equipment & Supplies	Springfield	43
	Louisville	44
Industrial Gases	Elizabethtown	-
Industrial Waste Removal	Elizabethtown	-
Machine Shops, Tool & Die	Elizabethtown	-
Metal Finishers	Elizabethtown	-
Metal Service Centers	Louisville	44
Millwrights	Elizabethtown	-
Public Warehouse Facilities	Elizabethtown	-

Sources: Kentucky Department of Economic Development, Kentucky Directory of Selected Industrial Services, 1985; Division of Research and Planning.

TRANSPORTATION

Rail

Line serving **Elizabethtown** - CSX Transportation

Services - Main line; daily service is available, currently freights stop two days per week; five northbound and five southbound through freights daily; switching services; team track space for 12 cars, siding space for 10 cars. Nearest piggyback facilities are located in Louisville, 44 miles to the north.

Line serving **Elizabethtown** - Paducah and Louisville Railway

Services - Main line; one northbound and one southbound through freight daily, additional service is available on an "as needed" basis. Nearest piggyback facilities are located in Louisville, 44 miles to the north.

For details on routing, schedules, rates, and services contact:

Manager of Industrial Development
CSX Transportation
P.O. Box 2157
Louisville, Kentucky 40201
(502) 587-5228

and/or

Paducah and Louisville Railway
1500 Kentucky Avenue
Paducah, Kentucky 42001
(502) 443-1246

Highways

Major highways which serve Elizabethtown are Interstate 65, the Blue Grass Parkway, the Western Kentucky Parkway, U.S. Highways 31W and 62, and Kentucky Route 61.

Interstate 65, a major north-south highway, serves Elizabethtown and connects with Interstates 64 and 71 in Louisville, 44 miles north of Elizabethtown. A major widening project has been completed on Interstate 65 at Elizabethtown.

Elizabethtown is the terminus of two multilane toll roads. Eastbound Blue Grass Parkway traverses central Kentucky to a point near Lexington. The Western Kentucky Parkway extends west from Elizabethtown through western Kentucky.

U.S. Highways 31W and 62 and Kentucky Route 61 are all "AAA"-rated (80,000-pound gross load limit) trucking highways. Kentucky Route 61 has been reconstructed between Elizabethtown and Hodgenville. The highway was expanded from two to four lanes.

The final segment of a bypass from U.S. 62 west of Elizabethtown to U.S. 62 east of the city is under construction. The project is scheduled for completion in 1986. The new highway is known as Ring Road.

Truck Service

Company

ABF Freight System, Inc.*	KATO Express, Inc. (T)*
A & H Truck Line, Inc.*	Leitchfield Transfer Company*
ANR Freight System, Inc. (T)*	Majors Transit, Inc.*
ARA/Smith's (T)*	Manning Motor Express, Inc.*
American Freight System, Inc.**	McLean Trucking Company**
Bestway Express, Inc. (T)**	Overnite Transportation Company*
Bowman Transportation, Inc.**	Harry Owen Trucking, Inc. (T)**
Buske Lines, Inc. (truck load only)**	Owenton Express, Inc.*
CW Transport, Inc.*	Portland Express, Inc.*
Central Transport, Inc.**	R-W Service System, Inc.*
Claxon Truck Line (T)*	Spartan Express, Inc.*
Consolidated Freightways Corporation of Delaware (T)*	Suburban Motor Freight, Inc.*
Duff Truck Line, Inc.*	TSC Express*
Holland Motor Express, Inc.*	Transcon Lines*
	United Trucking Service, Inc.*

(T) Terminal.

* Interstate and intrastate service.

** Interstate only.

Sources: American Motor Carrier Directory, Spring 1986; Elizabethtown-Hardin County Chamber of Commerce.

HIGHWAY MILES AND TRUCK TRANSIT TIME IN DAYS FROM
ELIZABETHTOWN, KENTUCKY, TO SELECTED MARKET CENTERS

City	Highway Miles	Delivery		City	Highway Miles	Delivery	
		Time TL				Time TL	
Atlanta, Ga.	373	2		Los Angeles, Ca.	2,152	5	
Baltimore, Md.	625	3		Louisville, Ky.	44	1	
Birmingham, Ala.	327	2		Nashville, Tenn.	131	1	
Chicago, Ill.	336	2		New Orleans, La.	648	3	
Cincinnati, Ohio	142	1		New York, N. Y.	787	-	
Cleveland, Ohio	389	3		Pittsburgh, Pa.	427	2	
Detroit, Mich.	404	3		St. Louis, Mo.	307	1	
Knoxville, Tenn.	255	2					

Note: Mileage computations are via the best interstate or primary highways, not necessarily the most direct route of travel.

Sources: Rand McNally Road Atlas, 1979. Official Kentucky Mileage Map, 1980.
Delivery time - Overnite Transportation Company, P. O. Box 99308, Louisville, Kentucky 40299.

Air

Local

Addington Field

Location: 4 miles west of Elizabethtown

Runways: 1 paved

Length: 5,000 feet

Traffic

Control: Unicom, wind sock

Lighting: Runway and beacon, VASI, REILS, lighted taxiway

Services: 100 octane, jet-A fuel, charter, major A & P repairs, hangar, tie down, flight instruction

Air Freight

Service: Chartered air freight service must be arranged

Nearest Scheduled Commercial Airline Service

Location: Standiford Field
5 miles southeast of center of Louisville, Kentucky;
39 miles north of Elizabethtown

Runways: 2 paved
Length: 10,000 feet; 7,250 feet

Traffic Control: Control tower

Lighting: Runways, obstructions, beacon and approach; touch-down lights and center line on one runway

Services: Delta, Eastern, Ozark, Piedmont, Republic, TWA, United, USAir, Allegheny Commuter, Comair, Florida Express; fuel - 100 and jet-A; major A & P repairs; major Avionics repairs; APU, charter, oxygen, U. S. Customs; taxi, car rentals, limousine, courtesy car, public transit; Weather Bureau; restaurant, snack bar

Air Freight Service: Air freight terminal

Air Express Service

Several major companies offer air express services in Kentucky. These companies provide a quick means of shipping small to medium-sized packages expeditiously.

Water

The nearest navigable river is the Ohio River. A nine-foot navigation channel is maintained along the entire Ohio River. Elizabethtown is 44 miles south of a point on the Ohio River at Louisville where public port facilities are available. Louisville has been designated as a foreign trade zone with complete U.S. customs services.

POWER AND FUEL

Electricity

Company serving **Elizabethtown and portions of Hardin County** - Kentucky
Utilities Company
Source of power - Kentucky Utilities Company
For industrial rates contact:

Industrial Development Department
Kentucky Utilities Company
One Quality Street
Lexington, Kentucky 40507
(606) 255-1461

Company serving **major portions of Hardin County** - Nolin Rural Electric
Cooperative Corporation
Source of power - East Kentucky Power Cooperative
For industrial rates contact:

Industrial Development Division
East Kentucky Power Cooperative
P.O. Box 707
Winchester, Kentucky 40391
(606) 744-4812

Company serving **northern portion of Hardin County** -Louisville Gas and
Electric Company
Source of power - Louisville Gas and Electric Company
For industrial rates contact:

Louisville Gas and Electric Company
P.O. Box 32010
Louisville, Kentucky 40232
(502) 566-4246 or (502) 566-4253

Natural Gas

Company serving **Elizabethtown** - Elizabethtown Water and Gas Department
Source of supply - Texas Gas Transmission Corporation
Size of transmission mains - 26-inch (supplier); 8 and 6-inch (distributor)
Distribution mains - 1 through 6 inches
Distribution pressure - 30 to 300 psi
Btu content - 1,000 per cubic foot
Specific gravity - 0.583
For rates and supplies contact:

Elizabethtown Water and Gas Department
111 West Dixie Avenue
P. O. Box 550
Elizabethtown, Kentucky 42701
(502) 765-6121

Other Fuels

Propane

Cottrells Service Center, Inc.
809 North Mulberry
Elizabethtown, Kentucky 42701

Olympic Muffler & Brake Center
917 North Mulberry
Elizabethtown, Kentucky 42701

Langley's Auto Center
U.S. 62
Elizabethtown, Kentucky 42701

Fuel oils

Distillate fuel oil -

Ashland Petroleum Company
736 Hawkins Drive
Elizabethtown, Kentucky 42701

Guy Williams & Son, Inc.
(Sunoco Jobber)
I C Tracks
Elizabethtown, Kentucky 42701

Ball Brothers Oil Company
(Shell Oil Products Jobber)
Hawkins Drive
Elizabethtown, Kentucky 42701

Union Oil Company
I C Tracks, P. O. Box 308
Elizabethtown, Kentucky 42701

Norman L. Jones
Hawkins Drive, P. O. Box 327
Elizabethtown, Kentucky 42701

Cox Oil Company
Southern States Petroleum
Cooperative
337 East Dixie Avenue
Elizabethtown, Kentucky 42701

Residual fuel oil - Arrangements must be made with the refinery.

Low sulphur content coal - Available in Kentucky.

WATER AND SEWERAGE

Public Water Supply

Company serving **Elizabethtown** - Elizabethtown Water and Gas Department*
 111 West Dixie Avenue, P. O. Box 550
 Elizabethtown, Kentucky 42701
 (502) 765-6121

Source - Two wells (900 gpm total pumping capacity), two springs and Freeman Lake

Treatment plant capacity - 4,500,000 gallons per day (2 plants)

Average daily consumption - 3,000,000 gallons

Peak daily consumption - 4,000,000 gallons

Type treatment - Rapid mix, flocculation, coagulation, sedimentation, filtration, chlorination, and fluoridation

Storage capacity - 2,915,000 gallons

Size lines - 4, 6, 8, 10, and 12 inches

Average pressure - 50 psi to 100 psi

MONTHLY WATER RATES

First	2,000 gallons	\$5.85 (minimum)
Next	3,000 gallons	2.01 per M gallons
Next	5,000 gallons	1.88 per M gallons
Next	5,000 gallons	1.75 per M gallons
Next	10,000 gallons	1.62 per M gallons
Over	25,000 gallons	1.43 per M gallons

Tap-on charges:

	<u>Inside City Limits</u>	<u>Outside City Limits</u>
3/4-inch	\$150	\$225
1-inch	150	225
1 1/2-inch	150	225
2-inch	150	225
3-inch	300	450
4-inch	300	450
6-inch	300	450
8-inch	300	450

The above charges are in addition to the actual cost of materials necessary for service installations.

(Continued)

* The Elizabethtown Water and Gas Department is expanding the treatment capacity of one of its plants from 2,000,000 gallons per day to 3,000,000 gallons per day, and installing a new circular clarifier. The pumping capacity of the well field is being doubled also. The project is scheduled for completion in August 1987.

Tap-on charge for standby fire protection outside city limits:

<u>Size of Service</u>	<u>Cost Per Year</u>
4-inch tap	\$ 250.00
6-inch tap	500.00
8-inch tap	1,000.00
12-inch tap	1,500.00

A charge of \$100.00 per year is levied on all private fire hydrants located on private property outside the city limits.

Name of water district - Hardin County Water District No. 2*

P. O. Box 66
 Elizabethtown, Kentucky 42701
 (502) 737-1056

Area served - Hardin County (except Elizabethtown, Radcliff, Vine Grove, and Upton)

Date when water district began operating - 1969

Sources of supply of treated water - Hardin County Water District No. 1 and Elizabethtown Water and Gas Department

Average amount of water used in a 24-hour period - 1,688,000 gallons

Peak amount of water used in a 24-hour period - 2,228,400 gallons

Storage capacity - 1,900,000 gallons

Size lines - 2 through 12 inches

Water pressure - 35 psi to 150 psi

MONTHLY WATER RATES

First	2,000 gallons	\$8.35 (Minimum)
Next	2,000 gallons	2.55 per M gallons
Next	6,000 gallons	2.05 per M gallons
Next	30,000 gallons	1.70 per M gallons
Next	60,000 gallons	1.45 per M gallons
Over	100,000 gallons	1.25 per M gallons

Minimum Bills:

<u>Meter size</u>	<u>Minimum gallonage</u>	<u>Minimum charge</u>
5/8 x 3/4-inch	2,000 gallons	\$ 8.35
1-inch	5,000 gallons	15.50
1 1/2-inch	10,000 gallons	25.75
2-inch	20,000 gallons	42.75
3-inch	30,000 gallons	59.75
4-inch	50,000 gallons	91.25
6-inch	100,000 gallons	163.75

(Continued)

* Two new storage tanks with a combined capacity of 900,000 gallons were installed in 1986. Funding is being sought for the construction of a 1,000,000-gallon-per-day water treatment plant.

Tap-on charges:

5/8 x 3/4-inch meter	\$ 325.00
1-inch meter	410.00
1 1/2-inch meter	800.00
2-inch meter	1,250.00 or actual cost
3-inch meter	2,090.00 or actual cost
4-inch meter	3,575.00 or actual cost
6-inch meter	5,550.00 or actual cost

Sewerage

Company serving **Elizabethtown** - Elizabethtown Water and Gas Department*
111 West Dixie Avenue, P. O. Box 550
Elizabethtown, Kentucky 42701
(502) 765-6121

Design capacity - 4,500,000 gallons per day

Average daily flow - 3,500,000 gallons

Type of treatment - Primary and secondary

Treatment processes - Flow equalization, screening, grit removal, primary sedimentation, rotating biological contactors, secondary sedimentation, chlorination, anaerobic digester, sludge drying beds, vacuum filters, land spreading of sludge

Treated effluent discharged into - Valley Creek

Size of sanitary mains - 6, 8, 10, 12, 15, 24 and 42 inches

Monthly rates - Based on water usage:

	<u>Inside City Limits</u>	<u>Outside City Limits</u>
First 2,000 gallons	\$5.20 minimum	\$10.40 minimum
Over 2,000 gallons	1.62 per M gallons	3.25 per M gallons

Quality treatment surcharges for industrial wastes exceeding specific limits:

BOD - \$0.046 per pound of BOD in excess of 250 mg/l

T S S - \$0.032 per pound of T S S in excess of 250 mg/l

COD - \$0.012 per pound of COD in excess of 1,000 mg/l

Tap-on charge: \$300 inside city limits; \$450 outside city limits.

* In 1985, the Elizabethtown Water and Gas Department began operations of its new 4,500,000-gallon wastewater treatment plant.

CLIMATE

Hardin County

Temperature

Normal (30-year record)	54.90 degrees
Average annual 1984	55.30 degrees
Record highest, August 1983 (40-year record)	103.00 degrees
Record lowest, January 1963 (40-year record)	-21.00 degrees
Normal heating degree days (30-year record) (Heating degree day totals are the sums of negative departures of average daily temperatures from 65 degrees F.)	4,814

Precipitation

Normal (30-year record)	45.68 inches
Mean annual snowfall (29-year record)	16.30 inches
Total precipitation 1984	42.27 inches
Mean number days precipitation (.01 inch or more) (40-year record)	130.80
Mean number days thunderstorms (40-year record)	46.00

Prevailing Winds (through 1963)

South

Relative Humidity

1 a.m.	77 percent (20-year record)
7 a.m.	81 percent (21-year record)
1 p.m.	60 percent (21-year record)
7 p.m.	64 percent (21-year record)

Source: U.S. Department of Commerce, Environmental Science Services Administration, Climatological Data, 1984. Station of record: Lexington, Kentucky.

LOCAL GOVERNMENT

Structure

Elizabethtown is served by a mayor and six council members. Hardin County is served by a county judge/executive and eight magistrates.

Planning and Zoning

City agency - Elizabethtown Planning Commission
Zoning enforced - Within the city of Elizabethtown
Subdivision regulations enforced - Within the city of Elizabethtown
Local codes enforced - Building and housing

County agency - Hardin County Planning and Development Commission
Zoning enforced - All areas of unincorporated Hardin County
Subdivision regulations enforced - All areas of unincorporated Hardin County
Local codes enforced - Building
Mandatory state codes enforced - Kentucky Plumbing Code, National Electric Code, Kentucky Boiler Regulations and Standards, Kentucky Building Code (modeled after BOCA code)

Local Fees and Licenses

Elizabethtown levies an annual license fee of eight-tenths of one percent on wages and on net profits of businesses, with a minimum net profit fee of \$25.00.

A 3 percent tax is levied on utilities receipts for schools in Hardin County. Tax is paid by all consumers of utilities as an add-on to the utilities bills. Exempted are receipts from utilities services that are resold and the receipts from the sale of energy or energy producing fuels that exceed 3 percent of the cost of production in manufacturing, processing, mining or refining.

State and Local Property Taxes

All property in Kentucky, except items exempted by the state constitution, is taxed by the state. Property which also may be taxed by local jurisdictions includes land and buildings, finished goods inventories, automobiles, trucks, office furniture and office equipment. Local taxing jurisdictions in Kentucky include counties, cities, and school districts.

All property in Kentucky is assessed at 100 percent of fair cash value.

COMBINED STATE AND LOCAL RATES PER \$100 VALUATION, 1985

	<u>Elizabethtown and Elizabethtown School District</u>	<u>Elizabethtown and Hardin County School District</u>	<u>Unincorporated Hardin County</u>
Land and Buildings	\$ 0.9946	\$ 0.7086	\$ 0.5106
Manufacturing Machinery	0.150	0.150	0.150
Pollution Control Equipment	0.150	0.150	0.150
Inventories			
Raw materials	0.001*	0.001*	0.001*
Goods in Process	0.001*	0.001*	0.001*
Finished Goods	0.8536*	0.4966*	0.2986*
Automobiles and Trucks	1.3066	0.9496	0.7476
Other Tangible Personal Property	1.3026	0.9456	0.7476
Intangibles (Accounts receivable, money in hand, stock, notes, bonds)	0.250**	0.250**	0.250**
Goods Stored in Public Warehouses in Transit Status	0.001*	0.001*	0.001*
Private Leaseholds in Industrial Revenue Bond Financed Facilities	0.015	0.015	0.015

* Includes 1986 state rate.

** Accounts receivable are taxed at 85 percent of face value, for an effective rate of \$0.2125 per \$100 valuation.

Safety

Police	Elizabethtown	Hardin County
Total staff	27	8 full-time 1 part-time
Radio-patrol cars	22	6
Fire*		
Insurance Services Office, Public Protection Classification	4	**
Full-time staff	29	-
Volunteers	-	277

Rescue Service

Rescue service in Hardin County is provided by Hardin County Disaster and Emergency Service.

Refuse Collection and Disposal

Private companies provide refuse collection and disposal in the city of Elizabethtown. A private company has been franchised to provide service to unincorporated Hardin County.

* Includes copyrighted material of ISO Commercial Risk Services, Inc., with its permission.

** Thirteen volunteer fire departments serve Hardin County. The cities of Radcliff, Vine Grove, and West Point have ISO classifications of 5, 7, and 6, respectively. Property located within 5 road miles of the Upton fire station in southern Hardin County and within 1,000 feet of a fire hydrant has a classification of 7. Most other property in the county lying within 5 road miles of a fire station has a class 9 rating. Property located within the county, but more than 5 road miles from a fire station, has a class 10 rating.

EDUCATION

Public Schools

	Elizabethtown Independent	Hardin County
Total Enrollment (Spring, 1986)	2,016	11,399
Kindergarten	131	899
Elementary	842	4,501
Junior High	344	-
Middle School	-	2,603
High School	709	3,396
Accreditation	Southern Association of Colleges and Schools	Southern Association of Colleges and Schools
Pupil-Teacher Ratio (1984-85)	21-1	23-1
Percent High School Graduates to College (1984-85)	81.0	53.3
Expenditures Per Pupil (1984-85)	\$2,065.27	\$1,745.70

Nonpublic Schools

<u>School</u>	<u>Enrollment</u>	<u>Grades</u>
St. James Elementary (Elizabethtown)	200	K -6
Elizabethtown Montessori Child Center	64	K -4
St. Brigid Elementary (Vine Grove)	148	1-8
St. Christopher Elementary (Radcliff)	103	1-6
Fort Knox Community Schools (Military Personnel)	3,877	K -12
Trinity Wesleyan Christian School (Elizabethtown)	30	1-4

Area Colleges and Universities

<u>Name</u>	<u>Location (Miles distant)</u>	<u>Enrollment (Fall, 1985)</u>	<u>Highest Degree Conferred</u>
Elizabethtown Community College	Elizabethtown	2,049	Associate
Campbellsville College	Campbellsville (42)	648	Baccalaureate
Saint Catharine College	Springfield (43)	246	Associate
Bellarmino College	Louisville (44)	2,664	Masters
Jefferson Community College	Louisville (44)	6,746	Associate
Spalding University	Louisville (44)	1,138	Masters, Specialist
University of Louisville	Louisville (44)	20,083	Doctorate, M.D., D.M.D., J.D.

Elizabethtown Community College

Elizabethtown Community College is a member of the University of Kentucky's Community College System and is accredited by the Southern Association of Colleges and Schools. The College offers an Associate in Applied Science degree in the following fields: Nursing, Secretarial and Office Administration, Data Processing Technology, and Business Technology with options in Management, Banking Management, and Real Estate Management. In addition, the college offers the first two years of study toward baccalaureate degrees in most programs offered by four-year colleges and universities. An Associate in Arts or an Associate in Science degree may be awarded in the pre-baccalaureate program.

Fort Knox Extension Campuses

Six universities and two colleges operate extension campuses at Fort Knox Military Reservation, 15 miles north of Elizabethtown. These extension campuses confer various graduate and undergraduate degrees, including doctorate degrees in policy analysis and education. The extension campuses' programs are open to the public, and the Fall 1985 total enrollment was 1,943. The extension campuses include: Central Texas College, Eastern Kentucky University, Embry Riddle Aeronautical University, Sullivan Junior College of Business, University of Kentucky, University of Louisville, University of Southern California, and Western Kentucky University.

Vocational Schools

The Kentucky Department of Education operates both the state vocational-technical schools and the area vocational education centers. The state vocational-technical schools are post-secondary institutions. The area vocational education centers are designed to supplement the curriculum of high school students. Both the state vocational-technical schools and the area vocational education centers offer evening courses to enable working adults to upgrade current job skills.

Arrangements can be made to provide training in the specific production skills required by an industrial plant. Instruction may be conducted either in the vocational school or in the industrial plant, depending upon the desired arrangement and the availability of special equipment.

Nearest State School

Elizabethtown State Vocational-Technical School
Elizabethtown

Business & Office

Accounting Management
Administrative Clerk
Bookkeeper
Clerical
Legal Secretary
Management Trainee
Medical Secretary
Secretarial
Stenographic Secretary
Word Processing
Word Processing Operator
Word Processing Specialist
Consumer & Home Economics
Commercial Foods
Distributive Education
Retail Training
Industrial Education
Agricultural Mechanics
Air Conditioning

Appliance Repair

Auto Mechanics
Carpentry
Diesel Mechanics
Drafting (with CAD/CAM)
Electronics
Industrial Electricity
Industrial Maintenance
Machine Shop
Plumbing
Radio & T.V. Repair
Vocational Career Exploration
Welding
Public Service Occupations
Fire Service
E.M.T. Training
Cardiopulmonary Resuscitation
Multimedia First Aid
Rescue Training

HEALTH

Local Medical Personnel

Physicians - 50

Dentists - 19

Hospitals

<u>General Hospital</u>	<u>Location</u>	<u>Beds</u>
Hardin Memorial Hospital	Elizabethtown	300

Medical staff - 80 physicians, 285 registered nurses, and 28 licensed practical nurses

Other Medical Facilities

Heartland Recovery Center (drug and alcohol abuse recovery and rehabilitation; to be opened November 1986)
Hardin County Health Center/Lincoln Trail District Health Department
North Central Comprehensive Care Center, Inc.
Regional Renal Dialysis Facility
Speech and Hearing Clinic
Surgical Center of Elizabethtown

Ambulance Service

Name - Hardin County Ambulance Service (Stations in Elizabethtown, Sonora and Radcliff)
Staff - 19 emergency medical technicians

OTHER LOCAL FACILITIES

Communications

Telephone -	General Telephone Company
Telegraph -	Western Union Toll-free number, 1-800-325-6000; counter service available
Newspaper - Daily (Sunday-Friday) - Circulation - Other papers received from -	The News-Enterprise 16,874 Louisville, Kentucky
Radio -	WIEL-AM, WKMO-FM, WQXE-FM
Television - Airwave reception from - Cable service - Educational television -	Louisville, Lexington, and Bowling Green, Kentucky Telescripps The Kentucky Educational Television (K.E.T.) network is available statewide

Library Services

- Public library - Hardin County Public Library (Lincoln Trail System)
Size collection - 67,584 volumes
Circulation, 1984-85 - 178,378
- College library - Elizabethtown Community College Media Center
Size collection - 29,517
Special collections - Kentucky collection
- Private library - Brown-Pusey House Library
Special collection - Historical, genealogy materials

Religious Institutions

Denominations -	African Methodist Episcopal Apostolic Assembly of God Baptist Christian Church of Christ Church of God Church of God of Prophecy Church of Jesus Christ of Latter Day Saints Episcopal	Interdenominational Jehovah's Witnesses Lutheran Methodist Nazarene Pentecostal Presbyterian Roman Catholic Seventh Day Adventist Wesleyan
Nearest Synagogues - Congregations -	Louisville, 44 miles north Adath Isreal Brith Sholom (reform) Adath Jeshurum (conservative) Anshei Sfard (orthodox) Keneseth Isreal (orthodox) Sholom (reform)	

Financial Institutions

<u>Banks</u>	<u>Assets</u>	<u>Deposits</u>	<u>Statement Date</u>
Elizabethtown			
Bank of Elizabethtown	\$ 28,233,984.02	\$ 24,359,922.35	12/31/85
Citizens Bank	60,732,268.49	55,420,926.13	12/31/85
Citizens Fidelity Bank and Trust Company of Hardin County	207,323,000.00	166,516,000.00	12/31/85
Republic Savings Bank*	208,368,274.17	192,190,410.26	12/31/85
Cecilia			
The Cecilian Bank	45,935,711.53	38,153,505.11	12/31/85
Fort Knox			
Fort Knox National Bank	59,635,000.00	45,588,000.00	12/31/85

(Continued)

* Figures represent totals for all nine Kentucky office locations, including Elizabethtown.

<u>Banks</u>	<u>Assets</u>	<u>Deposits</u>	<u>Statement Date</u>
Radcliff			
The Bank of North Hardin	32,216,000.00	28,569,000.00	12/31/85

Vine Grove

Farmers Bank	13,704,128.82	11,609,834.98	12/31/85
--------------	---------------	---------------	----------

<u>Savings and Loan Associations</u>	<u>Assets</u>	<u>Savings Accounts</u>	<u>Statement Date</u>
--------------------------------------	---------------	-------------------------	-----------------------

Elizabethtown

First Federal Savings and Loan Association	\$153,013,159.00	\$138,936,504.00	12/31/85
--	------------------	------------------	----------

Radcliff

Lincoln Federal Savings and Loan Association	527,194,669.00	475,190,050.00	6/30/84
--	----------------	----------------	---------

<u>Credit Union</u>	<u>Assets</u>	<u>Share Deposits</u>	<u>Statement Date</u>
---------------------	---------------	-----------------------	-----------------------

Fort Knox

Fort Knox Federal Credit Union	\$ 69,801,774.00	\$ 64,597,583.00	12/31/85
--------------------------------	------------------	------------------	----------

Hotels and Motels

Total number - 14
Total rooms - 962

RECREATION

Local

Three public parks provide Elizabethtown with a variety of outdoor activities. Freeman Lake Park offers a 120-acre lake for fishing and boating, plus 80 acres with picnic areas, grills, playground equipment, hiking trails, and five shelter houses. University Park, with eight acres, has ten lighted tennis courts, two soccer fields, and facilities for volleyball, baseball, handball, softball, and picnicking. The 32-acre American Legion Park features a picnic area, four tennis courts, a soccer field, softball fields, two outdoor swimming pools and a kiddie pool, and a par-3 golf course. Three mini-parks offer picnic areas and playground equipment. Greenbelt, an area for hiking, bicycling, and nature walking, extends approximately 16 miles. Gates Field, approximately 21 acres, has four soccer fields and one softball field, all for youth teams.

The Elizabethtown Parks and Recreation Department offers supervised programs including youth baseball leagues, spring and fall soccer leagues, a swim team, an adult co-ed volleyball league, adult full- and half-court basketball leagues, and a women's tennis league. Golf and tennis lessons also are taught by the Recreation Department.

The Recreation Department also is in charge of the Elizabethtown Summer Youth Day Camp Program for children ages six through 13. An average of 900 children attend the six-week day camp program annually. Activities include fishing, boating, hiking, swimming, sports, and visits to educational and recreational attractions in the area.

Elizabethtown has a new, fully equipped softball park, with three lighted fields. Facilities include restrooms, a concession stand, lighted parking, and home and visitors' dugouts. Summer and fall leagues are available for men's and women's teams, as well as co-ed church leagues.

The J. R. Pritchard Community Center features a multi-use area with a seating capacity of 855 and banquet arrangements for 400 people, two meeting rooms with seating capacities of 100 each, a kitchen, a snack area, stage facilities, bathroom and shower facilities, two full-size basketball courts, handball and racquetball courts, an indoor tennis court, a weight room, and equipment for ping-pong, badminton, volleyball, and gymnastics.

Both the Severns Valley Baptist Church and the Memorial Methodist Church offer athletic facilities.

Local schools have facilities for track, football, and indoor swimming. Other recreational facilities include a private country club with a swimming pool and an 18-hole golf course; a public 9-hole, par-3 golf course; a semi-private golf club offering a 9-hole course, swimming pool, tennis courts, hiking trails and picnic tables. Bowling facilities and indoor movie theaters are available also. One private health club is available, and a second one is scheduled to open in 1987.

Historical sites in Elizabethtown include the Lincoln Heritage House, built by Thomas Lincoln before his son's birth; the Governor Helm Mansion, an antebellum estate; and the Brown-Pusey House, the first inn and presently a community center. Other tourist attractions in or near Elizabethtown include General Custer Headquarters, the Patton Museum and the U.S. Gold Depository at nearby Fort Knox, and the Coca-Cola Bottling Company which displays art work, sculpture, Japanese landscaping, and a pool containing live, imported, brilliantly colored carp.

Area (Within 55 miles)

Abraham Lincoln Birthplace National Historic Site, located 15 miles southeast of Elizabethtown near Hodgenville, features the log cabin which was the birthplace of Abraham Lincoln, enclosed within a granite memorial shrine. The grounds include 116 acres of the original Thomas Lincoln farm and a visitors' center with audiovisual programs and exhibits on the Lincoln family.

Bernheim Forest Arboretum and Nature Center, located 22 miles northeast of Elizabethtown, is a privately endowed 10,000-acre forest and wildlife refuge. The area contains over 1,400 labeled varieties of plants, trees and shrubs; ornamental gardens; a museum; nature trails and waterfowl ponds.

Otter Creek Park, 22 miles northwest of Elizabethtown, is a scenic area of spectacular river bluffs along the Ohio River. Accommodations include a 24-unit lodge, cottages, and a scenic restaurant overlooking the Ohio River. Swimming pools, camping facilities, and meeting rooms are also available.

My Old Kentucky Home State Park, 26 miles east of Elizabethtown in Bardstown, portrays an image of the South's gentle and leisurely home life before the Civil War. The restored Georgian Colonial mansion is where composer Stephen Foster visited and where he was inspired to write "My Old Kentucky Home." One of the nation's most successful outdoor dramas, "The Stephen Foster Story", is presented in the park's amphitheatre during the summer months. The park also offers a 40-site campground, a gift shop, a 9-hole golf course and pro shop, a picnic area, and planned recreation.

Louisville, 44 miles north of Elizabethtown, provides a wide variety of recreational opportunities. The most noted recreational event in Louisville is the Kentucky Derby at Churchill Downs. The "Run for the Roses" is the oldest continuously held horse race in the United States. Other attractions include: Kentucky Center for the Arts, Macauley Theatre, Actors Theatre of Louisville, Louisville Children's Theatre, the Louisville Bach Society, the Louisville Orchestra, the Louisville Ballet, the Kentucky Opera Association, several museums, the Louisville Zoological Gardens, University of Louisville sporting events, rock concerts, and the "Belle of Louisville" sternwheeler.

Mammoth Cave National Park is located 44 miles southwest of Elizabethtown near Cave City. Beneath 52,000 park acres, Mammoth Cave is among the major tourist attractions of all times. It is the largest cave network ever discovered, with at least 230 miles of caverns. Some famous sights are Snowball Dining Room (267 feet below surface), Frozen Niagara, Crystal Lake, and Bottomless Pit. The park also features scenic boat trips on the Green River and nature and hiking trails. Park accommodations include a hotel with distinctive gift shops featuring native Kentucky and Southern Highland handicrafts, a motor lodge, hotel cottages, woodland cottages, and a hotel annex with budget accommodations and craft shop featuring live exhibits of broom making and weaving. Other park facilities include the hotel dining room and coffee shop, a service center, group meeting facilities, a campground, a picnic area, and tennis and shuffleboard courts.

Nolin River Lake is just north of Mammoth Cave National Park. The lake has a surface area of 5,800 acres and offers facilities for camping, boating, and fishing.

Green River Lake State Park near Campbellsville, 45 miles southeast of Elizabethtown, is made up of 1,300 acres surrounding an 8,200-acre lake. The park is open all year-round and offers 96 campsites, a beach, boat docks, fishing, and a picnic area.

Lincoln Homestead State Park, 48 miles east of Elizabethtown near Springfield, is a 153-acre park on land settled by Abraham Lincoln's family. The actual building in which Nancy Hanks, mother of President Lincoln, lived during her courtship with Thomas Lincoln is preserved here as well as a replica of the 1782 cabin where Thomas Lincoln lived as a boy. The park also has a museum, a gift shop, a picnic area, and an 18-hole golf course.

E. P. "Tom" Sawyer State Park, 50 miles northeast of Elizabethtown, is located near Louisville. Recreational facilities include an outdoor Olympic-size pool, a bathhouse, 12 lighted tennis courts, a picnic area, an archery range, and soccer fields. Planned recreation and a playground are offered year-round. Indoor facilities are available for basketball, volleyball, exercise classes, dance classes and various other events.

Noteworthy for its spaciousness, **Rough River Dam State Resort Park** at Falls of Rough is 50 miles west of Elizabethtown. The 377-acre park on Rough River Lake has a 40-room lodge with a dining room, a coffee shop, a gift shop, and a meeting room. Cottages and camping sites are also available. Recreational facilities include a launching ramp, a dock with open and covered slips, fishing and pleasure boat rentals, a 9-hole, 3-par golf course, a swimming pool, a sand beach with a bathhouse complex, tennis courts, an archery range, hiking trails, picnic and playground areas, and planned recreation. Cruise boat excursions on Rough River Lake are available on the "Lady of the Lake" in season.

Taylorville Lake, 52 miles northeast of Elizabethtown near Taylorville, was developed by the U.S. Army Corps of Engineers. The 3,050-acre lake and 10,700-acre recreation area offer facilities for fishing, boating, swimming, and wildlife recreation.

COMMUNITY IMPROVEMENTS

Recent

In 1985, Inland Packaging announced plans to begin a new manufacturing operation at Elizabethtown. Also in 1985, a total of 12 Elizabethtown manufacturing firms announced plans for expansions of their facilities, representing an estimated total investment of over \$36,000,000.

Elizabethtown was chosen as a "Kentucky Certified City" in 1985, marking its fifth consecutive year of certification by the Kentucky Chamber of Commerce. The award is based upon achievement in economic and community development.

The city of Elizabethtown began operation of its new \$15,000,000 wastewater treatment facility in 1985. The new plant has a design capacity of 4,500,000 gallons per day.

The Hardin County Water District No. 2 added two new water storage tanks to its system in 1986, at a cost of \$268,000.

Interstate Highway 65 was recently widened and improved at Elizabethtown. Kentucky Route 61 also was widened from two to four lanes between Elizabethtown and Hodgenville.

The Hardin County School System completed \$3,400,000 in construction and renovation projects in 1986. These include a new all-purpose facility and eight classrooms at North Hardin High School, a new cafeteria at East Hardin High School, a cafeteria expansion at Vine Grove Elementary School, a new lobby and dressing facilities at Lynnvale Elementary School, and a new kitchen, cafeteria, and all-purpose room at West Hardin High School. Also, since 1984, approximately \$200,000 has been invested for new computer equipment in all the system's schools.

A new learning resource center opened in 1984 at Elizabethtown Community College. The \$2,000,000 center contains a media center/library and a learning laboratory.

Hardin Memorial Hospital recently completed construction of a new 80,000-square-foot wing. The number of hospital beds has been increased to 300.

A new 300,000-square-foot shopping mall opened in Elizabethtown in 1985.

Under Way

The Elizabethtown Water and Gas Department has begun an expansion project to increase the treatment capacity of one of its fresh water treatment plants from 2,000,000 gallons per day to 3,000,000 gallons per day. The capacity of the well field is also being increased from its current yield of 900 gallons per minute to 1,800 gallons per minute. The project is scheduled to be completed by August of 1986.

The final segment of a bypass (Ring Road) from U.S. Highway 62 west of Elizabethtown to US. 62 east of the city is being constructed, and is scheduled to be completed in 1986. Ring Road provides direct access from the Hughes Center for Commerce and Industry to Interstate 65.

A multi-phased retirement community is under construction in Elizabethtown.

Planned

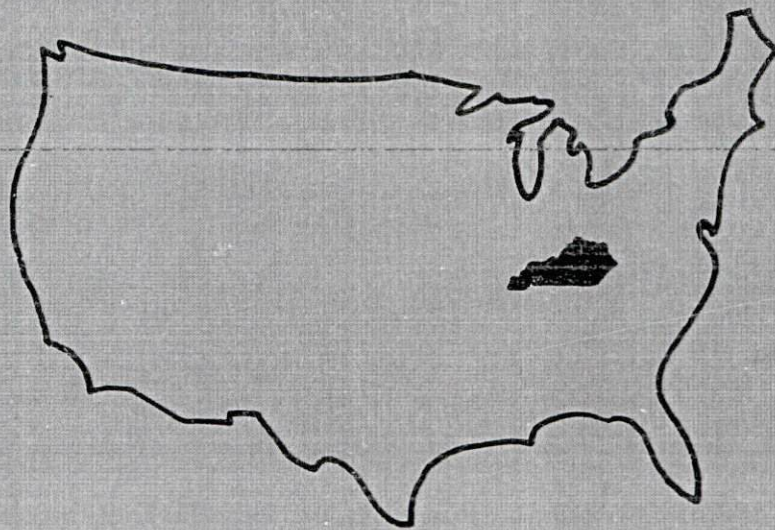
Hardin County Water District No. 2 is planning to construct a 1,000,000-gallon-per-day water treatment plant.

The Elizabethtown Independent School System is planning a library expansion at Helmwood Heights Elementary School.

An expansion and construction project is planned at Freeman Lake City Park.

A 30-acre private recreational facility is planned at Elizabethtown.

A project to widen U.S. Highway 62 west of Elizabethtown is planned.



**Kentucky Commerce Cabinet
Department of Economic Development
Capital Plaza Tower
Frankfort, Kentucky 40601
(502) 564-7140**