

Fall 1986

# Longhunter, Southern Kentucky Genealogical Society Newsletter Volume 9, Number 4

Department of Library Special Collections  
Western Kentucky University, [spcol@wku.edu](mailto:spcol@wku.edu)

Follow this and additional works at: [https://digitalcommons.wku.edu/longhunter\\_sokygsn](https://digitalcommons.wku.edu/longhunter_sokygsn)



Part of the [Genealogy Commons](#), [Public History Commons](#), and the [United States History Commons](#)

---

## Recommended Citation

Department of Library Special Collections, "Longhunter, Southern Kentucky Genealogical Society Newsletter Volume 9, Number 4" (1986). *Longhunter, Southern Kentucky Genealogical Society Newsletter*. Paper 19.  
[https://digitalcommons.wku.edu/longhunter\\_sokygsn/19](https://digitalcommons.wku.edu/longhunter_sokygsn/19)

This Newsletter is brought to you for free and open access by TopSCHOLAR®. It has been accepted for inclusion in Longhunter, Southern Kentucky Genealogical Society Newsletter by an authorized administrator of TopSCHOLAR®. For more information, please contact [topscholar@wku.edu](mailto:topscholar@wku.edu).

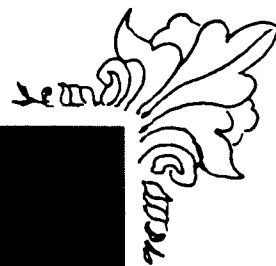
THE LONGHUNTER

Volume IX, No. 4  
Winter Issue - 1986

C O N T E N T S

In Memoriam . . . . .	114
A Christmas Quote . . . . .	115
A History of Logan County, Kentucky . . . . .	116
Scottish Clans . . . . .	121
Photos of Southern Kentucky Confederate Soldiers . . . . .	124
Photos of Southern Kentucky Union Soldiers . . . . .	126
Ancestor Charts:	
James Robert Wilkerson . . . . .	128
Meredith G. Wilkerson . . . . .	130
James Wilkerson . . . . .	131
Bullock, Canon, Dean, Edwards . . . . .	132
Holman, Terry . . . . .	133
Carter, Wakefield . . . . .	134
Dial . . . . .	136
Funeral Notice of Walter T. Crofton . . . . .	138
Funeral Notices of Alice D. and Rachel Atkinson . . . . .	139
William Allen Cemetery . . . . .	140
Vital Record Offices in the United States . . . . .	141
Book Reviews . . . . .	142
Queries . . . . .	145
The Society of Kentucky Pioneers . . . . .	148
Books and Publications from Longhunter Members . . . . .	149
Surname Index . . . . .	149

*In Memory  
of*



*Rosa Jones Halliburton*



Some say that ever 'gainst that season comes  
 Wherin Our Saviour's birth is celebrated,  
 The bird of dawning singeth all night long.  
 And then, they say, no spirit dare stir abroad,  
 The nights are wholesome, then no planets strike,  
 No fairy takes nor witch hath power to charm,  
 So hallowed and so gracious is the time.

Shakespeare, *Hamlet* I. i.



## A HISTORY OF EARLY LOGAN COUNTY, KENTUCKY

by

Mrs. A. V. (Louise) Shrum

Editors Note: Mrs. Shrum retired from a distinguished thirty-year teaching career at Lewisburg High School in the year 1955. The following article was prepared by her in the year 1948, for presentation to the Logan County Homemakers. We thank Mrs. Shrum for her kind permission to reprint this interesting article in The Longhunter.

- - -

Up until the year 1792 Kentucky was a part of Virginia. In that year it was admitted to the Union as a state and in the same year by an act of the legislature Logan County was established and given the name Logan for Col. Benjamin Logan, the Chief Officer of this territory. Logan then included all territory west of Barren and Metcalfe, at the south end, and west of Henderson at the north. Since then 28 counties have been set up out of Logan's original extent. As such, it was the western frontier. As early as 1793 Logan County was referred to as "Rogues Harbor." Refugees from all parts of the U.S. fled here to escape justice--murderers, horse thieves, and counterfeiters--actually formed a majority. Due to this, nothing could be done in the courts as the rogues would swear each other free. The honest citizens were so ashamed of this that they organized themselves into a body called Regulators. On Court Day the Regulators came to Russellville to see justice done, but they were outnumbered by the Rogues and a battle ensued. They fought with guns, pistols, knives, dirks, and clubs. At least one man was killed and many wounded. The Rogues won the day, but the undaunted Regulators rallied and by lynching and killing, finally drove the majority of the rogues out of the county. In the process many lives were lost.

In 1793 there were no schools, no churches, no newspapers, no stores, or mills. People killed their meat from the forest wild and beat meal and hominy with a pestle and moiler. They stretched a deer skin over a hoop and burned holes in it with the prongs of a fork for a meal sifter. They raised or gathered their teas from the woods. They had sage, bohea, crossvine, and sassafras teas in abundance. They made sugar and molasses from the water of the maple tree and fattened their hogs on acorns and wild pigeons. The wild pigeons were in such abundance they broke the limbs from trees where they roosted and when in flight darkened the sky for hours at the time. For clothing they used cotton and flax raised and woven at home. Dressed in an outfit completely produced at home, they felt as important as anybody. The first exports of the county were gunpowder and salt. The gunpowder was made from saltpeter found in caves here and a salt manufactory was started at Moate's lick in 1784.

Fort Messick on the north bank of the Ohio at the south end of Illinois had a U.S. government military post, our nearest store. After an inhabitant on Red River, near where Adairville now stands, made a big quantity of gun powder, he decided to take it to Fort Messick on

a trading expedition. To do this he cut a huge poplar, hollowed it out, and made a large neat canoe. Then he made a proclamation to the neighborhood if they had money or anything to trade to bring it in on a set day with a signed list of the things they wished to be got at Fort Messick. He launched his canoe in Red River, loaded it, and proceeded to the Cumberland River, then to the Ohio to Fort Messick. He made the round trip safely and his homecoming was a time of great rejoicing. They had learned the advantage of navigation. A one-fourth pound of coffee, 1 yard of ribbon, a butcher knife, a tin cup, etc. is a part of the list of things he brought back.

A large part of the county was in forest and some remarkable forest trees were found here--poplars, 8 or 9 feet through, were cut in 1818 and found to be 600 years old. There are two ancient oaks still standing in the yard of Mrs. Jimmy Dew at Lewisburg. Under one of which the Mt. Pleasant Baptist Church was organized 126 years ago. There were such dense cane brakes around Russellville that people who lived a mile or two out of town in some directions had to go 7 or 8 miles and enter by a buffalo trace. The buffalo traces from lick to lick were the first roads in the county. The Schochoh country was known as "Hickory Flat" or the "Barrens" because there were no trees there. They even dug moats for fences. The traces of these moats may still be found. The early settlers paid \$6.75 an acre for land out on the Bowling Green Road because there was an abundance of wood, water, and wild game; while in the Schochoh neighborhood land could be bought for 75¢ an acre.

According to Finley, in 1780 Morton Maulding, who was hunting buffalo, was the first white visitor to the place where Russellville now stands. It was known as Great Boiling Springs until 1790, as Logan Courthouse until 1798, when Russellville was laid out and named in honor of William Russell, the original owner of the land.

West Maulding was elected first sheriff of Logan County. The Citizens, thinking he should have a house fitting his office, erected a cedar house with 2 rooms above and 2 below with a cellar. This was the most commodious and elegant house in Green River Country.

The first officers of the county were paid in tobacco. The county court Clerk received 1200 pounds, county attorney, 1500 pounds and the sheriff, 1200 pounds. Morton Maulding was elected first Representative from Logan County to the State Legislature in 1794. He could neither read nor write anything except his own initials. Two-thirds of the legislature were in the same shape. He was succeeded in 1795 by Young Ewing from the county who was quite a brilliant and educated man.

Violence, robbery, and murder, and all manner of crimes ruled supreme in Logan County from 1792 to 1800. The people were so hardened in sin that it was hard to get a gospel hearing.

The Rev. James McCready, who founded the Cumberland Presbyterian Church at Old Red River Church here in the county, was the first minister to get any accreditable hearing. He and Peter Cartwright ushered in one of the three greatest American revivals. This great

awakening began in 1800 and had its beginning in Logan County. According to the biography of Peter Cartwright this revival was accompanied by great manifestations of the Spirit known as the jerks. When women were affected by the jerks they shook every hair pin from their heads and those with long plaits were said to have made their hair pop like a long wagon whip. He said that he always advised the affected one to pray fervently and this usually relieved the jerking. If they resisted; however, they only jerked the harder. He relates this story. A camp meeting was in progress in 1804, a great crowd was assembled and many had the jerks. A group of ruffian approached with their whiskey bottles in their pockets and were going to break up the meeting. The leader started into the group and taken with the jerks. This made him angry so he took his bottle from his pocket and cursed and said he would drink the d\_\_\_ things down. His arm jerked so that he was unable to get the bottle to his lips, but instead broke it on a nearby sapling. This further infuriated him and he cursed and swore and jerked the more until he jerked his head so hard he broke his neck and he fell dead on the spot.

Around the camp meeting ground were nearly always saplings, topped to about the height of a man, that those who were seized with the jerks hung onto. Around these, it looked as if horses had been stamping.

In 1804, Logan Academy was established. In 1806, Logan and Newton Academies united and the new establishment was called Newton Academy. It was built where the Russellville Grade School now stands. It was a brick building--2 rooms below, and 2 above with 2 halls. This school was the chief means of education in the West and claims many distinguished men as alumni.

In 1800, a post route was established from Frankfort to Logan County Courthouse to Robinson County, Tennessee.

The first cemetery was where the jail now is.

The period from 1800 to 1830 is the Golden Age of Logan County. In those years a stream of cultured and refined people came pouring into the county to take the place of the lawless element. These new settlers were a sturdy and dependable stock--aristocrats from Virginia and Pennsylvania Dutch. From these families, in succeeding generations, have come many distinguished men in all walks of life. It is said that Russellville has produced more men of marked individuality than any other town in the state. Logan County has produced four governors of Kentucky, four Chief Justices, five governors of other states, as well as many outstanding financiers, statesmen, and religious and educational leaders.

Another chapter in Logan County history is told of the Shakers by Julia Neal of Auburn in her book By Their Fruits, a summary of which follows as taken from the cover of the book:

In terms of communal living, few American communities have been successful as South Union in Logan County, Kentucky. The United Believers, or Shakers, came from New York, arriving in 1805 during the great religious revival in Kentucky, to fulfill the prophecy

of their "female Christ" in bringing the gospel to the southwest. In this frontier country they built a neat and attractive village. From their many acres of farmland and their fine livestock, the Shakers became completely self-supporting, surviving even the panic of 1837 without severe loss. Their goods were sold down the river as far as New Orleans, and their food was so widely acclaimed that such dignitaries as President Monroe, General Jackson, Henry Clay, and Sam Houston stopped at the village to dine as they passed through southern Kentucky.

The Shakers were both respected and hated in Kentucky. They conducted themselves with a dignity which gave honor to their cause, but their communal venture was so successful economically that many of their less fortunate neighbors allowed envy to carry them to the point of persecution. Several fires were set which destroyed the barns of the colony, horses were poisoned, and there were even threats of personal violence. The derisive epithet "Shaker" was attached to the group of United Believers because of the unusual religious practices of the group. Picnics combined with worship services, love feasts (wine, cakes, and gospel), and the "exercises" and dances which made up part of the church program caused the Shakers to be a curiosity in the frontier community.

Although quiet and conservative in matters of dress and living quarters, these people believed in the usefulness of modern inventions (unlike many of the other religio-socialist groups) which would make "God's work" easier and better. They were first in the section to have sewing machines, corn shellers, and lighting rods. In the early 1900's the Believers installed telephones and bathrooms, bought a gasoline water pump, and were known to have the first auto in the county.

Logan County was in the midst of the conflict of the War Between the States. The greater part of the north of the county were Yankees, the greater part of the south, Rebels. Many human interest stories are told of the period when Yankee soldiers were stationed in Russellville; the following was told by M. B. Morton in his book Kentuckians Are Different:

We were destined to a rude awakening a few days later. We had just sat down to dinner. Perhaps you would call it lunch. We had on the table turkey, biscuit, butter, milk, and dumplings. We heard the rattle of a drum and looking out the window saw General McCook, Yankee officer, with a thousand men filing into our cornfield. They stripped the corn from the stalks and put it in sacks which were thrown across their horses. These horses were bountifully loaded with many things. They had geese, ducks, chickens, and pigs tied to the saddles.

Judge Hise was counted a Union man because, though he held that the contention of the South was constitutionally sound, he could never consent to the dismemberment of the Union, which he loved more than life. On this occasion he was greatly disturbed and highly indignant. Said he: "I will saddle old Peter and go to town and report these thieves to the commanding officer. Here they are robbing poor Bill while he is in town sick in bed."

Peter was a fat old horse, a good saddle and harness horse, of whom Judge Hise was very fond. He mounted him and started on his

mission. Meantime, a squad of soldiers, having filled their sacks with corn, came to the house for something to eat. My aunt, who was a dyed-in-the-wool Rebel, pretended to be deaf. The soldiers searched the house. When they got to the dining room which had been closed with the dinner on the table, they found my aunt standing in front of the door. "You can't come in this room," she said, "This is my parlor and you shan't go in there and mess everything up," so the soldiers passed on to other rooms. They opened an old tin safe and found in it a large dish of smearcase--perhaps you would call it cottage cheese. They began to gouge their hands in and eat it by great mouthfuls. The old Spartan aunt snatched the dish, threw it in the yard, and said: "If you are going to eat like dogs, go out in the yard and eat."

Her slave cook, Hennie, seeing my aunt pretending to be deaf, also pretended that she could not hear. Finally the soldiers, all except one little German recruit, left the house and began chasing the flock of turkeys in the yard. My aunt ran out, and would jump in front of the saber when a soldier attempted to cut off a turkey's head. She gave up the turkey hunt. The old lady then went back into the house, picked up a stick and said to the German recruit: "Now you are the only one left in the house; and if you do not get out, I will knock you out." A soldier standing outside near the door yelled to the German with many profane epithets and told him to come out of the house and "let that old crazy woman alone." The German slowly obeyed, saying as he went down the steps: "If she had hit me with that stick I would have killed her." One gentleman in the squad had saved the day.

On his journey to town Judge Hise had got no farther than the big gate leading out of the farm when he was met by a squad of soldiers. One of them said: "Old man, get off that horse for we are going to trade horses." Peter was fat but the soldier's horse was poor and emaciated. "I won't trade," said the Judge. "Oh yes, you will," said the soldier. "Get down and take the saddle off that horse." The saddles were exchanged, the soldier mounted old Peter and rode away, and the Judge came walking back to the house leading his new horse. Half way from the gate to the house he met the soldiers who had been there trying to get something to eat. At the same time they were met by another bunch of soldiers going toward the house.

"Where are you going?" asked one of the first squad. "We are going up to that house," said one of the second squad, "to get something to eat." The first man replied, "There is no use. They have nothing to eat, and there is nobody up there except an old crazy white woman, and a Negro just as crazy as she is."

The Judge came on up to the house leading his horse. "I won't ride the d--- pack of bones," said he. So he took the saddle and bridle off the horse and turned him loose. The pack of bones wandered across the field, fell into a sinkhole and broke his neck. When the war was over and thousands of old army horses were being brought through the country and sold, the Judge for several years kept a sharp lookout for Peter, but he never saw him again. "Poor old Peter," said he. "He could not stand army usage, and they soon rode him to death."

A history of our county could not be complete without one story of Jesse James. This one was told to Milton Baker, news commentator,

(to be continued in next issue)

# Want to know your Scottish clan?

## ...check this listing

EDITOR'S NOTE--Many area residents are wondering about their Scottish roots. Following is a list of some of the more prominent clans and their family members.

### NAME CLAN

Abbot, <i>Macnab</i>	Brown, <i>Lamont, Macmillan</i>	Dewar, <i>Macnab, Menzies</i>
Abbotson, <i>Macnab</i>	Buchan, <i>Cumin</i>	Dingwall, <i>Munro, Ross</i>
*Abercrombie, <i>Family</i>	Burdon, <i>Lamont</i>	Dis, <i>Disc, Skene</i>
Abernethy, <i>Leslie</i>	Burk, <i>MacDonald</i>	Dochart, <i>MacGregor</i>
Adam, <i>Gordon</i>	*Burnett, <i>Campbell</i>	Doig, <i>Drummond</i>
Adamson, <i>MacIntosh</i>	*Burns, <i>Campbell of Argyll</i>	Doles, <i>MacIntosh</i>
Adie, <i>Gordon</i>		Donachie, <i>Robertson</i>
Airlie, <i>Ogilvie</i>		Donald, <i>MacDonald</i>
Alexander, <i>MacAlister,</i>	Caddell, <i>Campbell of Cawdor</i>	Donaldson, <i>MacDonald</i>
<i>MacDonald, MacDonell of</i>	Caird, <i>MacGregor, Sinclair</i>	Donleavy, <i>Buchanan</i>
<i>Glengarry</i>	Calder, <i>Campbell of Cawdor</i>	
Allan, <i>MacDonald of</i>	Callum, <i>MacLeod of Raasay</i>	Dougall, <i>MacDougall</i>
<i>Clunranald, MacFarlane</i>	Campbell of Strachur,	Dove, <i>Buchanan</i>
Allanson, <i>MacDonald of</i>	<i>MacArthur</i>	Dow, <i>Buchanan, Daviason</i>
<i>Clanranald, MacFarlane</i>	Cariston, <i>Skene</i>	Dowall, <i>MacDougall</i>
Allardice, <i>Graham</i>	*Carmichael, <i>MacDougall,</i>	Drysdale, <i>Douglas</i>
*Allison, <i>Family</i>	<i>Stewart</i>	
Alpin, <i>MacAlpine</i>	*Carnegie, <i>Family</i>	Duff, <i>MacDuff</i>
Anderson, <i>Ross</i>	Carson, <i>Macpherson</i>	Duffie, <i>Duffy, Macfie</i>
Andrew, <i>Ross</i>	Cattanach, <i>Macpherson</i>	Dullach, <i>Stewart</i>
*Angus, <i>MacInnes</i>	Caw, <i>MacFarlane</i>	*Dunbar, <i>Family</i>
Arthur, <i>MacArthur</i>	Chalmers, <i>Cameron</i>	Duncanson, <i>Duncan</i>
Austin, <i>Keith</i>	Cheyne, <i>Sutherland</i>	Dunnachie, <i>Robertson</i>
Ayson, <i>MacIntosh</i>	*Christie, <i>Farquharson</i>	*Dyce, <i>Skene</i>
*Baillie, <i>Family</i>	*Clark, <i>Clerk, Cameron,</i>	Edie, <i>Gordon</i>
Bain, <i>Macbean, MacKay,</i>	<i>MacIntosh, Macpherson</i>	Elder, <i>MacIntosh</i>
<i>Macnab</i>	Clarkson, <i>Cameron, MacIntosh,</i>	Esson, <i>MacIntosh</i>
Bannatyne, <i>Campbell of Argyll,</i>	<i>Macpherson</i>	Ewan, <i>Ewen, MacEwen</i>
<i>Stewart</i>	Clyne, <i>Sinclair</i>	Ewing, <i>MacEwen</i>
Bannerman, <i>Forbes</i>	*Cochrane, <i>Family</i>	Fair, <i>Ross</i>
Bartholomew, <i>MacFarlane</i>	*Cockburn, <i>Family</i>	Farquhar, <i>Farquharson</i>
*Baxter, <i>Macmillan</i>	Collier, <i>Robertson</i>	Federith, <i>Sutherland</i>
Bayne, <i>Macbean, MacKay,</i>	Colman, <i>Buchanan</i>	Fergus, <i>Ferguson</i>
<i>Macnab</i>	Colson, <i>MacDonald</i>	Ferries, <i>Ferguson</i>
Bean, <i>Macbean</i>	Colyear, <i>Robertson</i>	Ferson, <i>Macpherson</i>
Beathy, <i>MacBeth</i>	Combich, <i>Stewart</i>	Fife, <i>Macduff</i>
Beaton, <i>MacDonald, MacLean,</i>	Combie, <i>MacIntosh</i>	Findlay, <i>Finlay, Farquharson</i>
<i>MacLeod of Harris</i>	Comrie, <i>MacGregor</i>	Findlayson, <i>Farquharson</i>
Bell, <i>Macmillan</i>	Comyn, <i>see Cumming</i>	
Begg, <i>MacDonald</i>	Conacher, <i>MacDougall</i>	Findlater, <i>Ogilvie</i>
Berkeley, <i>Barclay</i>	*Connell, <i>Conne, MacDonald</i>	Fleming, <i>Murray</i>
Bethune, <i>MacDonald, MacLean,</i>	Conochie, <i>Campbell</i>	Fordyce, <i>Forbes</i>
<i>MacLeod of Harris</i>	Cook, <i>Stewart</i>	*Forsyth, <i>Family</i>
Beton, <i>MacDonald, MacLean,</i>	Coulson, <i>MacDonald</i>	Foulis, <i>Munro</i>
<i>MacLeod of Harris</i>		France, <i>Stewart</i>
Binnie, <i>MacBean</i>	Coutts, <i>Farquharson</i>	Fresell, <i>Friscall, Frizell, Fraser</i>
Black, <i>Lamont, MacGregor,</i>	Cowan, <i>Colquhoun, MacDougall</i>	Frew, <i>Fraser</i>
<i>MacLean</i>	*Cranston, <i>Family</i>	Fullarton, <i>Stewart</i>
Bontain, <i>Bontine, Buntin,</i>	*Crauford, <i>Crawford, Lindsay</i>	Fyfe, <i>MacDuff</i>
<i>Graham</i>	Crerar, <i>MacIntosh</i>	*Galbraith, <i>MacDonald,</i>
Bowie, <i>MacDonald</i>	Crombie, <i>MacDonald</i>	<i>MacFarlane</i>
Boyd, <i>Stewart</i>	Crookshanks, <i>Stewart</i>	Garrow, <i>Stewart</i>
Brewer, <i>Drummond, MacGregor</i>	Cruikshanks, <i>Stewart</i>	Gaunson, <i>Gunn</i>
Brieve, <i>Morrison</i>	Currie, <i>MacDonald of</i>	Geddes, <i>Gordon</i>
	<i>Clanranald, Macpherson</i>	Georgeson, <i>Gunn</i>
	Dallas, <i>MacIntosh</i>	Gibb, <i>Buchanan</i>
	*Dalziel, <i>Family</i>	Gibson, <i>Buchanan</i>
	Darroch, <i>MacDonald</i>	Gilbert, <i>Buchanan</i>
	Davie, <i>Davidson</i>	Gilbertson, <i>Buchanan</i>
	Davis, <i>Davidson</i>	Gilbride, <i>MacDonald</i>
	Davison, <i>Davidson</i>	Gilchrist, <i>MacLachlan, Ogilvie</i>
	Dawson, <i>Davidson</i>	Gilfillan, <i>Macnab</i>
	Denoon, <i>Campbell of Argyll</i>	Gillanders, <i>Ross</i>
	Deuchar, <i>Lindsay</i>	Gillespie, <i>Macpherson</i>

\*Gillies, Macpherson  
 Gilmore, Morrison  
 Gilroy, Grant, MacGillivray  
 \*Gladstone, Family  
 Glen, Glennie, Mackintosh  
 Gorrie, MacDonald  
 Gowrie, MacDonald  
 Gray, Stewart, Sutherland  
 Gregor, MacGregor  
 Gregorson, MacGregor  
 Gregory, MacGregor  
 Greig, MacGregor  
 Greusach, Farquharson  
 Grier, MacGregor  
 Grierson, MacGregor  
 \*Haig, Family  
 Hallyard, Skene  
 Hanna, Hannah, Hannay  
 Hardie, Hardy, Farquharson,  
 Mackintosh  
 Harper, Buchanan  
 Harpers, Buchanan  
 Hawthorn, MacDonald  
 Hendrie, Hendry, Henderson,  
 MacNaughton  
 Hewison, MacDonald  
 \*Home, Family  
 Houston, MacDonald  
 Howison, MacDonald  
 Hughson, MacDonald  
 \*Hunter, Family  
 Huntly, Gordon  
 Hutcheson, MacDonald  
 Hutchinson, MacDonald  
 Inches, Robertson  
 \*Inglis, Family  
 Innis, Innes  
 \*Irvine, Family  
 Jameson, Gunn, Stuart of Bute  
 \*Jardine, Family  
 \*Johnson, Gunn, MacDonald  
 Kay, Davidson  
 Kean, Keene, Gunn,  
 MacDonald  
 Kellie, Kelly, MacDonald  
 Kendrick, Henderson,  
 MacNaughton  
 Kenneth, MacKenzie  
 Kennethson, MacKenzie  
 \*Kilgour, Family  
 Kilpatrick, Colquhoun  
 King, MacGregor  
 Kinnell, MacDonald  
 \*Kinnieson, MacFarlane  
 Kirkpatrick, Colquhoun  
 Lachlan, MacLachlan  
 Lamb, Lamont  
 Lambie, Lamont  
 Lammie, Lamont  
 Lammond, Lamont  
 Lamondson, Lamont  
 Landers, Lamont  
 Lang, MacDonald  
 \*Lauder, Family  
 Laurence, MacLaren  
 Law, MacLaren  
 Lawrie, MacLaren  
 Lean, MacLean  
 Leckie, Lecky, MacGregor  
 Lees, Macpherson  
 Lennie, Lenny, Buchanan  
 Lennox, MacFarlane, Stewart  
 Lewis, MacLeod

Limont, Lamont  
 Lobban, Logan  
 Loudoun, Campbell  
 Love, MacKinnon  
 Low, MacLaren  
 Lucas, Lamont  
 \*Lumsden, Forbes  
 Lyall, Sinclair  
 Lyon, Farquharson  
 MacAdam, MacGregor  
 MacAdie, Munro  
 MacAindra, MacFarlane  
 MacAlaster, MacAlister  
 Macalduie, Lamont  
 MacAlester, MacAlister  
 MacAllan, MacDonald of  
 Clanranald, MacFarlane  
 Macandcoir, Buchanan,  
 Macnab, Menzies  
 MacAndrew (see Anderson),  
 Mackintosh, Ross  
 MacAngus, MacInnes  
 Macara, MacGregor, Macrae  
 Macarree, MacGregor  
 MacAskill, MacLeod of Harris  
 MacAuslan, MacAusland,  
 Buchanan  
 MacAy, Mackintosh  
 MacBain, MacBean  
 MacBaxter, Macmillan  
 \*MacBeath, MacBean,  
 MacDonald, MacLean  
 MacBeolain, MacKenzie  
 \*MacBeth, MacBean,  
 MacDonald, MacLean  
 MacBrayne, MacNaughton  
 MacBride, MacDonald  
 MacBrieve, Morrison  
 MacCaa, MacFarlane  
 MacCaig, Farquharson,  
 MacLeod of Harris  
 MacCainsh, MacInnes  
 MacCaishe, MacDonald  
 MacCall, MacColl  
 MacCalman, Buchanan  
 MacCalmont, Buchanan  
 MacCamie, Stewart  
 MacCammon, MacCammond,  
 Buchanan  
 MacCansh, MacInnes  
 MacCardney, Farquharson,  
 Mackintosh  
 MacCartair, MacArthur  
 MacCash, MacDonald  
 MacCaskill, MacLeod  
 MacCaul, MacDonald  
 MacCause, MacFarlane  
 MacCaw, Stewart  
 MacCay, MacKay  
 MacCeallaich, MacDonald  
 MacChoiter, MacGregor  
 MacChruter, Buchanan  
 MacClerich, MacChlery,  
 Cameron, Mackintosh,  
 Macpherson  
 MacCloy, Stuart of Bute  
 MacClure, MacLeod  
 MacClymont, Lamont  
 MacCodrum, MacDonald  
 MacColinan, Buchanan  
 MacComas, Gunn  
 MacCombe, Mackintosh

MacCombich, Stewart of Appin  
 MacCombie, Mackintosh  
 MacConacher, MacDougall  
 MacConachie, MacGregor,  
 Robertson  
 MacCondy, MacFarlane  
 MacConnach, MacKenzie  
 MacConnechy, Campbell,  
 Robertson  
 MacConnell, MacDonald  
 MacConnichie, Campbell,  
 MacGregor, Robertson  
 MacCooish, MacDonald  
 MacCook, MacDonald  
 MacCorkill, MacCorkle, Gunn  
 MacCorkindale, MacLeod  
 MacCormack, Buchanan,  
 MacLaine of Lochbuie  
 MacCormick, Buchanan,  
 MacLaine of Lochbuie  
 MacCorquodale, MacLeod  
 MacCorrie, MacCorry,  
 Macquarrie  
 MacCoull, MacDougall  
 MacCowan, Colquhoun,  
 MacDougall  
 MacCulloch, MacDonald, Mac-  
 Dougall, Munro, Ross  
 MacDaniell, MacDonald  
 MacDowall, MacDowell,  
 MacDougall  
 MacGuire, Macquarrie  
 Mackinney, Mackinnon  
 MacIure, MacLeod of Harris  
 MacLymont, Lamont  
 MacMartin, Cameron  
 MacMaster, Buchanan,  
 MacInnes  
 MacMath, Matheson  
 MacMaurice, Buchanan  
 MacMenzies, Menzies  
 MacMichael, Stewart  
 MacMinn, Menzies  
 MacMordoch, MacDonald,  
 Macpherson  
 MacMorran, Mackinnon  
 MacMunn, Stewart  
 MacMurchie, MacMurchy,  
 Buchanan, MacDonald,  
 MacKenzie  
 MacMurdo, MacDonald,  
 Macpherson  
 MacMurray, Murray  
 MacMurrich, MacDonald of  
 Clanranald, Macpherson  
 MacMurtie, Stuart of Bute  
 MacNair, MacNayer,  
 MacFarlane, MacNaughton  
 MacNee, MacGregor  
 MacNeillage, MacNeill  
 MacNeish, MacGregor  
 MacNelly, MacNeill  
 MacNeur, MacFarlane  
 MacNider, MacFarlane  
 MacNie, MacGregor  
 Malcolmson, MacCallum,  
 MacLeod, Malcolm  
 Malloch, MacGregor

Mann, Gunn  
 Manson, Gunn  
 Marr, Gordon  
 Marshall, Keith  
 Martin, Cameron, MacDonald  
 Masterton, Buchanan  
 Mathie, Matheson  
 Maxwell, Family  
 May, MacDonald  
 Means, Menzies  
 Meikleham, Lamont  
 Mein, Meine, Menzies  
 Melville (see page 254), Family  
 Melvin, MacBeth  
 Mengues, Menzies  
 Mennie, Menzies  
 Menteith, Graham, Stewart  
 Meynars, Menzies  
 Michie, Forbes  
 \*Middleton, Innes  
 Miller, MacFarlane  
 Milne-Gordon, Innes, Ogilvie  
 Minn, Menzies  
 Minnus, Menzies  
 \*Mitchell, Innes  
 Moir, Gordon  
 Monach, MacFarlane  
 Monteith, Graham, Stewart  
 Monzie, Menzies  
 Moray, Murray  
 More, Leslie  
 Morgan, MacKay  
 \*Mowat, Sutherland  
 \*Muir, Family  
 Munn, Stewart  
 Murchie, Buchanan,  
 MacDonald, MacKenzie  
 Murchison, Buchanan,  
 MacDonald, MacKenzie  
 Murdoch, MacDonald,  
 Macpherson  
 Murdoson, MacDonald,  
 Macpherson  
 Neil, Neill, MacNeill  
 Neilson, MacKay, MacNeill  
 Neish, MacGregor  
 Nelson, Gunn  
 Nicol, Nicoll, MacNicol  
 Nicolson, see MacNicol  
 \*Nisbet, Family  
 Nish, MacGregor  
 Niven, Cumin, MacIntosh,  
 MacNaughton  
 Noble, MacIntosh  
 Norman, MacLeod of Harris  
 \*Oliphant, Sutherland  
 Parlane, MacFarlane  
 Paterson, MacLaren  
 Patrick, Lamont  
 Paul, Cameron, MacIntosh,  
 MacKay  
 Peter, MacGregor  
 Philipson, MacDonell of  
 Keppoch  
 Pitullich, MacDonald  
 Polson, MacKay  
 Purcell, MacDonald  
 Rae, Macrae  
 Raeburn, Family  
 \*Rankin, MacLean  
 \*Rattray, Murray  
 Reid, Murray  
 Reid, Robertson  
 Reoch, Farquharson,  
 MacDonald

Revie, MacDonald  
 Riach, Farquharson, MacDonald  
 Risk, Buchanan  
 Ritchie, MacIntosh  
 Robb, MacFarlane, Robertson  
 Robinson, Gunn  
 Robson, Gunn  
 \*Rollo, Family  
 Ronald, MacDonell of Keppoch  
 Ronaldson, MacDonell of  
 Keppoch  
 Rorison, MacDonald  
 Roy, Robertson  
 Ruskin, Buchanan  
 \*Russell, Family  
 \*Ruthven, Family  
 Sandersort, MacDonell of  
 Glengarry  
 Sandison, Gunn  
 Scobie, Mackay  
 Scobie, Mackay  
 \*Seaton, Family  
 Shannon, MacDonald  
 Sim, Sime, Fraser  
 Simon, Fraser  
 Simpson, Fraser  
 Small, Murray  
 Sorley, Cameron, Lamont,  
 MacDonald  
 Spalding, Murray  
 Spence, MacDuff  
 Spens, MacDuff  
 Sporrin, MacDonald  
 Stalker, MacFarlane  
 Stark, Robertson  
 \*Sturrock, Family  
 Swan, MacQueen  
 Swanson, Gunn  
 Syme, Fraser  
 Synn, Fraser  
 Taggart, Russ  
 Tarrill, MacIntosh  
 Tawesson, Campbell of Argyll  
 \*Taylor, Cameron  
 Thomas, Campbell of Argyll  
 Thomason, Campbell of Argyll,  
 MacFarlane  
 \*Thompson, Thomson,  
 Campbell of Argyll  
 Tolinie, MacLeod  
 Todd, Gordon  
 Tosh, MacIntosh  
 Toshach, MacIntosh  
 Toward, Towart, Lamont  
 Train, MacDonald  
 Turner, Lamont  
 Tweedie, Fraser  
 Tyre, Macintyre  
 Ure, Campbell of Argyll,  
 MacIver  
 Vass, Munro, Ross  
 Wallis, Wallace  
 Walters, Forbes  
 Wass, Munro, Ross  
 Watson, Buchanan  
 Watt, Buchanan  
 Weaver, MacFarlane  
 \*Weir, Buchanan, MacFarlane,  
 MacNaughton  
 \*Wemyss, MacDuff  
 Whannell, MacDonald  
 White, Whyte, Lamont,  
 MacGregor  
 Wilkinson, MacDonald

Will, Gunn  
 Williamson, Gunn, Mackay  
 \*Wilson, Gunn  
 \*Wotherspoon, Family  
 Wright, Macintyre  
 Wylie, Gunn, MacFarlane  
 Yuill, Yuille, Yule, Buchanan

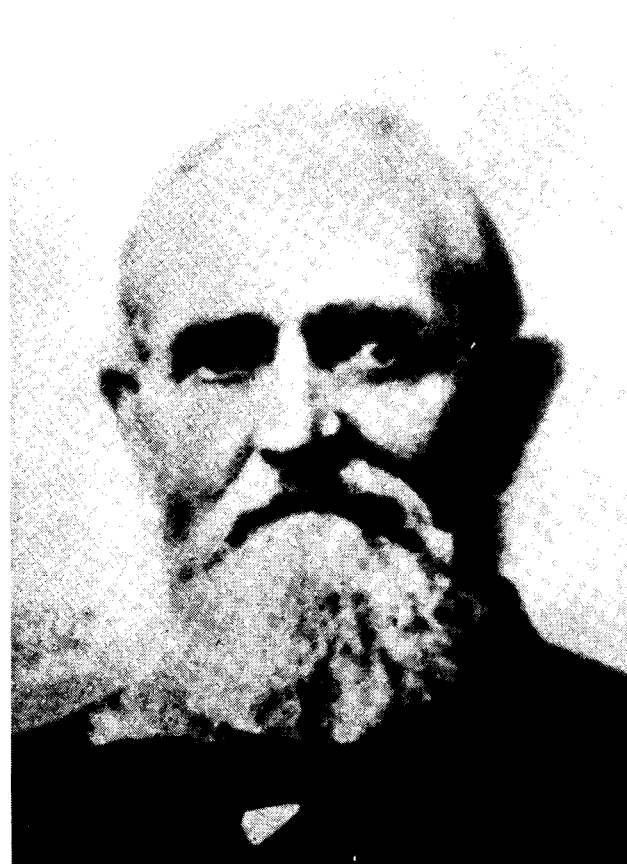
Glasgow, Ky., Daily Times,

Thursday, May 29, 1986





Captain Thomas Henry Hines, C.S.A.  
Co. E. 9th KY - Morgan's Cav.  
Original C.D.V. photo by  
Clement Reeves Edwards, B. G., KY  
Courtesy Stephen L. King



General William F. Perry, C.S.A.  
44th Alabama - Buried Fairview Cemetery  
Bowling Green, Kentucky  
Courtesy of Kentucky Library



Major John D. Mannen, C.S.A.  
Bowling Green Guards 1861  
Courtesy Joseph S. Hays



General William Joseph Hardee, C.S.A.  
Served under Gen. A. S. Johnston during  
Bowling Green's Confederate Occupation  
Original C.D.V. by Clement Reeves Edwards - B.G., KY  
Courtesy Kenneth C. Thomson, Jr.



Unknown Union Officer  
Original C.D.V. by Clement Reeves Edwards - B.G., KY  
Courtesy Kenneth C. Thomson, Jr.



Unknown Union Officer  
Original C.D.V. by Clement Reeves Edwards - B.G., KY  
Courtesy Kenneth C. Thomson, Jr.



2nd Lieut. J. David Bryan, Union  
from Franklin, KY  
Copy of Original Ferrottype  
Courtesy Kenneth C. Thomson, Jr.



General William Edward Hobson, Union  
13th Ky. Inf. from Bowling Green, KY  
Original C.D.V. by Clement Reeves Edwards - B.G., KY  
Courtesy Kenneth C. Thomson, Jr.

**HUSBAND'S NAME** James Robert WILKERSON

When Born 28 Nov 1816 Where Logan/Simpson Co., Ky.  
 Christened \_\_\_\_\_ Where \_\_\_\_\_  
 When Died 9 Apr 1900 Where Logan/Simpson Co., Ky.  
 When Buried \_\_\_\_\_ Where Friendship Cemetery  
 When Married 3 Feb 1856 Where Simpson Co., Ky.  
 Other Wives (if any) first Mahala PEART, Nancy's sister  
 Number (1) (2) etc. \_\_\_\_\_  
 His Father Meredith G. WILKERSON His Mother's Maiden Name Elizabeth W. PRICE

James Robert WILKERSON  
 (Husband's Full Name)

Nancy PEART  
 (Wife's Maiden Name)

This information obtained from  
 court house and family Bible  
 records

128

**WIFE'S MAIDEN NAME** Nancy PEART

When Born 11 Aug 1824 Where Simpson Co., Ky.  
 Christened \_\_\_\_\_ Where \_\_\_\_\_  
 When Died 9 Jun 1887 Where Logan/Simpson Co., Ky.  
 When Buried \_\_\_\_\_ Where \_\_\_\_\_  
 Other Husb. (if any) \_\_\_\_\_  
 Number (1) (2) etc. \_\_\_\_\_  
 Her Father James PEART Her Mother's Maiden Name Elizabeth JOHNSON

Date VAN A. STILLEY  
 Comj 3812 SWEETBRIAR ROAD  
 Addr WILMINGTON, N. C. 28403-5437  
 City TELEPHONE (919) 392-6604

Male or Female	CHILDREN (Arrange in order of birth)	WHEN BORN Day Month Year	WHERE BORN Town or Place County	State or Country	WHEN DIED* Day Month Year	Married
	All ch b	Logan/Simpson	Co., Ky.		child	Date never
	1 James M.	28 Jan 1857				To
	2 Alice	19 Feb 1858				Date 14 Dec 1879
						To Samuel RAY
	3 Levi	11 Jun 1861			3 Oct 1942	Date 16 Aug 1888
						To Virtie E. HOLLINS
	4 Ida	21 Sep 1864				Date 13 Oct 1886
						To Henry HERNDON
	5 Ann	26 Aug 1867			ca 1945	Date Oct 1889
						To Philander ELLIOTT
	6					Date
						To
	7					Date
						To
	8					Date
						To
	9					Date
						To
	10					Date
						To

compiler's  
 grandparents

**HUSBAND'S NAME** James Robert WILKERSON

When Born 28 Nov 1816 Where Logan/Simpson Co., Ky.  
 Christened \_\_\_\_\_ Where \_\_\_\_\_  
 When Died 9 Apr 1900 Where Simpson Co., Ky  
 When Buried \_\_\_\_\_ Where Friendship Cemetery, Logan Co.  
 When Married 30 Aug 1837 Where Simpson Co., Ky.  
 Other Wives (if any) second Nancy PEART, Mahala's sister  
 Number (1) (2) etc. \_\_\_\_\_  
 His Father Meredith G. WILKERSON His Mother's Maiden Name Elizabeth W. PRICE

James Robert WILKERSON  
 (Husband's Full Name)

Mahala PEART  
 (Wife's Maiden Name)

This information obtained from  
 Logan Co., Ky., census, court,  
 cemetery, and Bible records;  
 Mrs. Ola Wilkerson Matlock;  
 Mrs. Bulena Wilkerson Stilley  
 Vick; Mrs. J. Wells Vick; DAR  
 Library

**WIFE'S MAIDEN NAME** Mahala PEART

When Born 31 Mar 1816 Where Simpson Co., Ky.  
 Christened \_\_\_\_\_ Where \_\_\_\_\_  
 When Died 11 Jul 1855 Where Logan Co., Ky.  
 When Buried \_\_\_\_\_ Where Friendship Cemetery, Logan Co.  
 Other Husb. (if any) \_\_\_\_\_  
 Number (1) (2) etc. \_\_\_\_\_  
 Her Father James PEART Her Mother's Maiden Name Elizabeth JOHNSON

Date VAN A. STILLEY  
 Com 3812 SWEETBRIAR ROAD  
 Addr WILMINGTON, N. C. 28403-5437  
 City TELEPHONE (919) 392-6604

Male or Female	CHILDREN (Arrange in order of birth)	WHEN BORN Day Month Year	WHERE BORN Town or Place County State or Country	WHEN DIED* Day Month Year	Married
	1 Mary Elizabeth	5 Aug 1838	All children b Simpson Co. Ky.	26 Apr 1878	Date 8 Oct 1856 To Thomas NEEL
	2 William B.	23 Nov 1839		17 Jan 1894	Date 10 Dec 1868 To Susan E.
	3 Matilda	18 Apr 1841			Date 7 Oct 1858 To Coleman HALL
	4 Nancy Peart	22 Jan 1843		21 Jul 1898	Date 13 Sep 1860 To James APPLING
	5 Amanda	8 Jan 1845			Date 5 Feb 1862 To Granville HARRIS
	6 George Leonard	24 Nov 1848			Date 2nd Annie 17 Jan 1894 To Jennie CREWDSON
	7 Henry C.	15 Aug 1853		5 Oct 1892	Date 30 Sep 1873 To Belle PERKINS
	8				Date _____ To _____
	9				Date _____ To _____
	10				Date _____ To _____

HUSBAND'S NAME Meredith G. WILKERSONWhen Born 18 Nov 1793 Where Louisa Co., VA

Christened \_\_\_\_\_ Where \_\_\_\_\_

When Died 19 Apr 1858 Where Morgan Co., MO

When Buried \_\_\_\_\_ Where \_\_\_\_\_

When Married 30 Nov 1815 Where Logan Co., KYOther Wives (if any)  
Number (1) (2) etc. \_\_\_\_\_His Father James WILKERSON His Mother's Maiden Name Charity STANLEYMeredith G. WILKERSON  
(Husband's Full Name)Elizabeth W. PRICE  
(Wife's Maiden Name)This information obtained from  
Various; inquire of compilerWIFE'S MAIDEN NAME Elizabeth W. PRICEWhen Born 25 Mar 1795 (stone) 1796 (Bible) Where Pittsylvania Co., VA

Christened \_\_\_\_\_ Where \_\_\_\_\_

When Died 5 Feb 1881 Where Logan Co., KY\*When Buried \_\_\_\_\_ Where Friendship CemeteryOther Husb. (if any) \* Fam moved ca 1840 to Morgan Co., MO; Eliz returned after Meredith's death Address 3812 Sweetbriar RoadHer Father Robert PRICE Her Mother's Maiden Name Sarah CHURCH City Wilmington State NC 28403

Male or Female	CHILDREN (Arrange in order of birth)	WHEN BORN Day Month Year	WHERE BORN Town or Place County State or Country	WHEN DIED* Day Month Year	Married
	1 James Robert	28 Nov 1816	All ch. b. Logan or Simpson Co., KY	9 Apr 1900	Date <u>1837</u> <u>1856</u> Logan KY To <u>Mahala and Nancy PEART</u>
	2 Joel P.	10 Jan 1819			Date _____ To _____
	3 Marge	7 May 1822			Date _____ To _____
	4 Sary Ann	15 May 1829			Date <u>25 Feb 1846</u> Morgan Co., MO To <u>Alexander WALKER</u>
	5 Carriline	7 Apr 1831			Date _____ To _____
	6 Meredith Francis	4 Mar 1833			Date <u>30 Apr 1854</u> Morgan Co., MO To <u>Nancy D. SMITH</u>
	7 William Garland	18 Jul 1837			Date _____ To <u>E. C.</u>
	8				Date _____ To _____
	9				Date _____ To _____
	10				Date _____ To _____

**HUSBAND'S NAME** James WILKERSON

When Born ca 1775 Where Louisa Co., VA  
 Christened \_\_\_\_\_ Where \_\_\_\_\_  
 When Died 1820-1830 Where Logan Co., KY  
 When Buried \_\_\_\_\_ Where \_\_\_\_\_  
 When Married 11 Oct 1792 Where Goochland Co., VA  
 Other Wives (if any)  
 Number (1) (2) etc. \_\_\_\_\_  
 His Father Jarrett WILKERSON His Mother's Maiden Name Ann/Nancy PERKINS

James WILKERSON  
 (Husband's Full Name)

Charity STANLEY  
 (Wife's Maiden Name)

This information obtained from  
 Various; inquire of compiler.

**WIFE'S MAIDEN NAME** Charity STANLEY

When Born \_\_\_\_\_ Where Hanover or Louisa Co., VA  
 Christened \_\_\_\_\_ Where \_\_\_\_\_  
 When Died 1820-1830 Where Logan Co., KY  
 When Buried \_\_\_\_\_ Where \_\_\_\_\_  
 Other Husb. (if any)  
 Number (1) (2) etc. \_\_\_\_\_  
 Her Father Solomon STANLEY Her Mother's Maiden Name Elizabeth/Betsy

Date August 1986

Compiler Van A. STILLEY

Address 3812 Sweetbriar Road

City Wilmington State NC 28403

Male or Female	CHILDREN (Arrange in order of birth)	WHEN BORN			WHERE BORN		State or Country	WHEN DIED*			Married
		Day	Month	Year	Town or Place	County		Day	Month	Year	
	1 Meredith G.	18	Nov	1793	All ch. b. Louisa or Fluvanna Co., VA			Morgan Co., KY 19 Apr 1858			Date 30 Nov 1815 Logan Co., KY To Elizabeth W. PRICE
	2 Brice M.	18	Oct	1795				Simpson Co., KY 10 Apr 1870			Date To Emily SHAW?
	3 Solomon Stanley	28	Sep	1802				Simpson Co., KY 18 Feb 1856			Date To (1) Sarah; (2) Minerva
	4 Robert										Date To
	5 William C.	15	Dec	1806				Simpson Co., KY 20 Feb 1850			Date To S. E. BLACKBURN
	6 James W.										Date To Rebecca HENDRICKS
	7										Date To
	8										Date To
	9										Date To
	10										Date To

## Ancestor Chart

Name of Compiler WINKENHOFER, Margaret

Person No. 1 on this chart is the same person as No. \_\_\_\_\_ on chart No. \_\_\_\_\_

Chart No. \_\_\_\_\_

Address 2138 Cemetery RdCity, State Bowling Green, Ky 42101Date 25 Oct 1986

## 4 BULLOCK, Peter Elias

b. 8 Mar 1850 (Father of No. 2)

p.b. Ind

m. 4 Dec 1870

d. Nov 1926

p.d. Sileam Springs, Ark

p.d. Redrock Cem. Calumet, Ok

## 2 BULLOCK, George Washington

(Father of No. 1)

b. 16 Oct 1892

p.b. Besworth, Carroll Co, Mo

m. 10 Sept 1919

d. 15 May 1974

p.d. Hydro, Custer Co, Okla

## 5 DEAN, Martha Dillard

(Mother of No. 2)

b. 10 Sept 1851

p.b. Besworth, Carroll Co, Mo

d. 30 May 1911

p.d. Calumet, Canadian Co, Ok  
Redrock Cem

## 1 BULLOCK, Margaret Elaine

b. 21 Aug 1920

p.b. Calumet, Canadian Co, Okla

m. 24 Dec 1943

d.

p.d.

## 6 CANON, Pressly Carlane

(Father of No. 3)

b. 9 Jul 1865

p.b. Forest City, Holt Co, Mo

m. 11 Oct 1893

d. 19 May 1937

p.d. El Reno, Canadian Co, Ok

## 3 CANON, Helen Mary

(Mother of No. 1)

b. 8 Mar 1895

p.b. Banner, Canadian Co, Ok Terr

d.

p.d.

## 7 EDWARDS, Artie Missie

(Mother of No. 3)

b. 11 Jun 1868

p.b. Ocoola, Clarke Co, Iowa

d. 20 Nov 1957

p.d. El Reno, Canadian Co, Ok

## 8 BULLOCK, Curtis

(Father of No. 4)

b. 1817

p.b. Ky

m.

d. 17 Jan 1898

p.d. Besworth, Carroll Co, Mo

Bethlehem Cem

## 9 ZIEGLER, Martha

(Mother of No. 4)

b. 1820

p.b. Ohio

d.

p.d. Besworth, Carroll Co, Mo

## 10 DEAN, George Washington

(Father of No. 5)

b. 1809

p.b. Cumberland Gap? Tenn

m. 17 Mar 1838

d. 19 Feb 1870

p.d. Besworth, Carroll Co, Mo

Bethlehem Cem

## 11 JOHNSTON, Rachel Dillard

(Mother of No. 5)

b. 20 Dec 1815

p.b. Mc Minnville, Warren Co, Tn

d. 22 Sept 1851

p.d. Besworth, Carroll Co, Mo

Bethlehem Cem

## 12 CANON, John Morgan

(Father of No. 6)

b. 18 Mar 1837

p.b. Uniontown, Fayette Co, Pa

m. 20 Apr 1864

d. 27 Aug 1898

p.d. El Reno, Canadian Co, Ok

## 13 DABBY, Sarah Elizabeth

(Mother of No. 6)

b. 18 Jul 1838

p.b. Alliance, Ohio

d. 8 Feb 1915

p.d. El Reno, Canadian Co, Ok

## 14 EDWARDS, James Buchanan

(Father of No. 7)

b. 1820

p.b. Tn

m.

d. 14 Aug 1888

p.d. Beaver Co, No-Man's-Land

later Ok

## 15 ALLEN, Mary

(Mother of No. 7)

b. 1823

p.b. Tn

d. 1909

p.d. Mo

## 16 BULLOCK

b. N.Y. (Father of No. 8,  
Cont. on chart No. \_\_\_\_\_)

m.

d.

## 17

b. Va (Mother of No. 8,  
Cont. on chart No. \_\_\_\_\_)

d.

## 18 ZIEGLER

b. Pa (Father of No. 9,  
Cont. on chart No. \_\_\_\_\_)

m.

d.

## 19

b. Va (Mother of No. 9,  
Cont. on chart No. \_\_\_\_\_)

d.

## 20

b. (Father of No. 10,  
Cont. on chart No. \_\_\_\_\_)

m.

d.

## 21

b. (Mother of No. 10,  
Cont. on chart No. \_\_\_\_\_)

d.

## 22 JOHNSTON, Alexander Jr

b. 16 Jul 1789 (Father of No. 11,  
Cont. on chart No. \_\_\_\_\_)

m. 6 Dec 1813

d. 22 Feb 1839

## 23 HAMMONDS, Mary

b. 7 Mar 1795 (Mother of No. 11,  
Cont. on chart No. \_\_\_\_\_)

d. 33 Sept 1863

## 24 CANON, John

b. 1798 (Father of No. 12,  
Cont. on chart No. \_\_\_\_\_)

m.

d.

## 25 BROWN, Margaret

b. 1797 (Mother of No. 12,  
Cont. on chart No. \_\_\_\_\_)

d.

## 26

b. (Father of No. 13,  
Cont. on chart No. \_\_\_\_\_)

m.

d.

## 27

b. (Mother of No. 13,  
Cont. on chart No. \_\_\_\_\_)

d.

## 28

b. (Father of No. 14,  
Cont. on chart No. \_\_\_\_\_)

m.

d.

## 29

b. (Mother of No. 14,  
Cont. on chart No. \_\_\_\_\_)

d.

## 30

b. (Father of No. 15,  
Cont. on chart No. \_\_\_\_\_)

m.

d.

## 31

b. (Mother of No. 15,  
Cont. on chart No. \_\_\_\_\_)

d.

## WINKENHOFER, Willard Edward

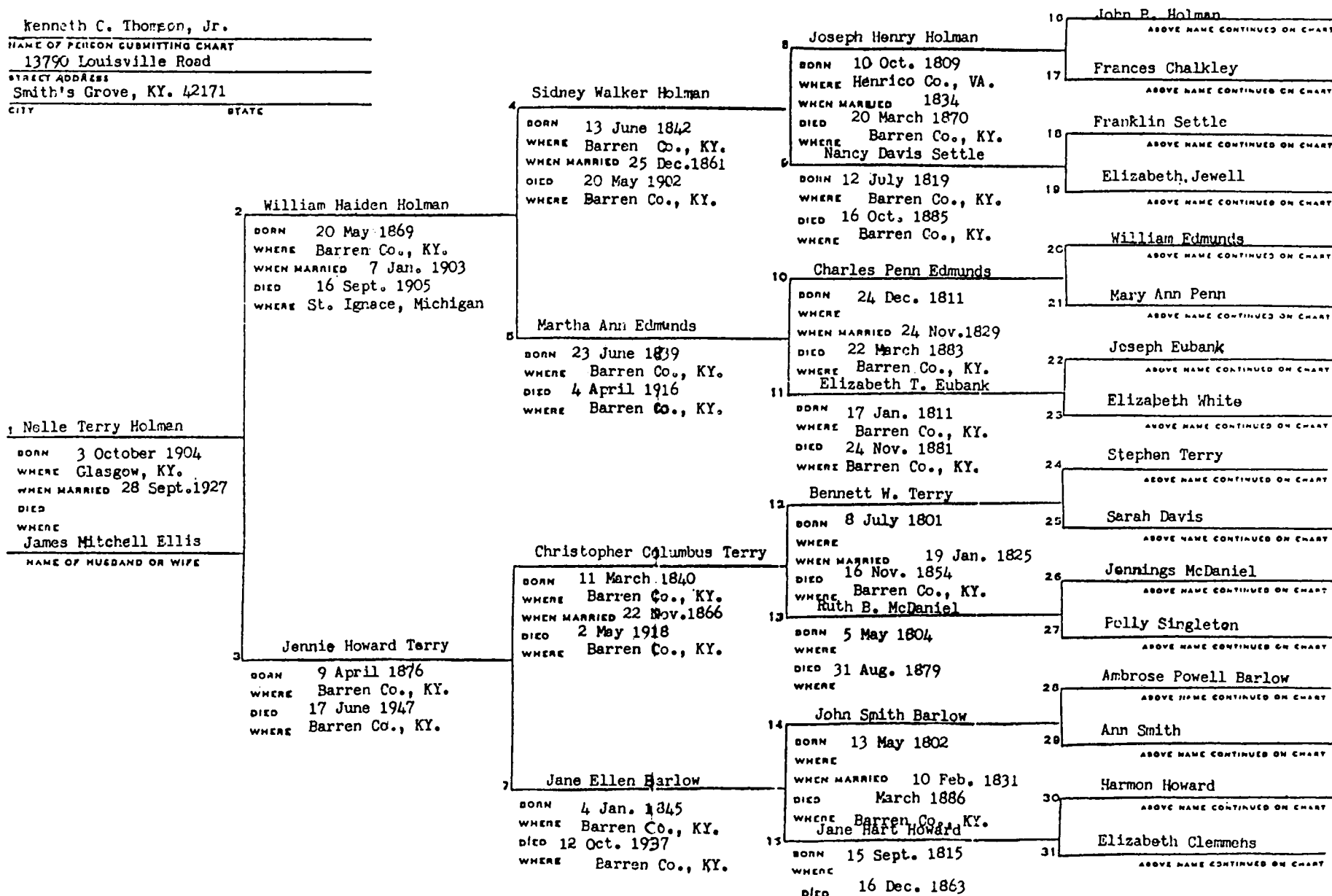
(Son of No. 1)

b. 13 Jul 1915

p.b. Bowling Green, Ky

p.d.

Kenneth C. Thompson, Jr.  
 NAME OF PERSON SUBMITTING CHART  
 13790 Louisville Road  
 STREET ADDRESS  
 Smith's Grove, KY. 42171  
 CITY STATE



## COMPILER:

Claudette Wakefield  
17702 December Pine  
Spring, Texas 77379

Edward Lucius Carter - - - 24 Dec 1895 21 Jan 1956 West Plains, Missouri	John Anderson Carter -- 8 Aug 1875 28 April 1955 Carter Co. Missouri	Joel Anderson Carter 1850 Tennessee 26 Feb 1894 Millie Hassell 10 April Tennessee 18 Feb 1937
Harold Edward Carter 14 July 1925 Texline, Texas	Mary Frances Thrasher -- 25 Aug 1877 Grand Rapids, Michigan	Lucius Buell Thrasher 19 March 1848 Michigan Mary Hammond 4 Nov 1857 Michigan
Alpha Omega Broyles - - - 21 May 1897 13 April 1986 West Plains, Missouri	William Sylvester Broyles 17 April 1854 29 April 1917 Kansas Cynthia Ann Chaplain -- 3 Sept 1927 Missouri	Lewis S. Broyles 17 June 1829 Illinois 1891 Laura Ellen Waller 1834 Illinois 24 March 1902 John Henry Chaplain 18 March 1793 Tennessee 11 Jan 1853 Elizabeth McClusky 15 Nov 1820 Tennessee
Claudette Margaret Carter 2 Oct 1946 Naples, Texas	Thomas Jones Georgia Sarah Eliza Franklin Georgia	John Jones Georgia David Franklin Georgia McWilliams Georgia
Eddie Effridge Jones - - 1867 9 April 1931 Woodbury, Georgia	Jonas Moon Trumble - - 26 Oct 1854 17 June 1947 Naples, Texas	Harmon Trumble 1 July 1820 New York 22 April 1854 Anna Moon 1 June 1822 Tennessee 13 Nov 1889 Isham Stroud Tennessee Josephine Arkansas
Margaret Lenora Jones 28 April 1926 Naples, Texas Ladonia Trumble - - - 15 June 1889 19 June 1944 Naples, Texas	Margaret Josephine Stroud 1867-68 May 1941 Hempstead, Co. Arkansas	

SPOUSE: Jimmy Harve Wakefield  
17 Sept 1939

Claudette Wakefield  
17702 December Pine  
Sapring, Texas 77379

Charles Harvey Wakefield -

12 Aug 1867 Cass Co.  
4 April 1896 Tx

Catherine Elizabeth Hall

2 Aug 1869

Harvey Sylvester Wakefield

17 Dec 1842 Georgia Butts Co  
11 Dec 1889

Martha Ann Leftwich  
9 Sept 1849 Texas  
1869

Willis Wade Wakefield - - -

22 July 1895 Daingerfield  
5 Jan 1928 Tx

Harve Calvin Wakefield  
5 Aug 1919

Daingerfield, Texas

Annie Gladys Gilstrap - - -

10 Nov 1896 Daingerfield  
27 April 1977 Texas

Ira Alonzo Gilstrap - - -

20 Sept 1851 Georgia

27 July 1929

Jeremiah Madison Gilstrap

1 Aug 1821 Georgia  
26 Feb 1901

Sarah Ann Flemister  
13 Sept 1825 Georgia  
22 March 1888

Avery B. Hood  
1831 Georgia

Jeanin Bolton Hood - - -

4 June 1857 Texas

17 May 1923

Mildred Bolton  
1830 Georgia

Jimmy Harve Wakefield

17 September 1939

Daingerfield, Texas

John Henry Smith - - - -

10 April 1862 Alabama  
29 Oct 1913

Thomas Henry Smith  
1823 Georgia

Malinda Georgia

James Robert Smith - - -

16 July 1892 Alabama  
1 July 1963

Mary Frances Reams - - -

6 May 1867 Alabama  
14 Dec 1945

James Ransom Reams  
19 July 1834 Georgia  
3 April 1902

Caroline Tapley Georgia  
19 May 1825

Esther Florence Smith

22 April 1922

Tipton, Oklahoma

William Franklin Leonard -

6 June 1852 Texas  
20 June 1919

William Matthew Leonard  
1813 South Carolina

Elizabeth C. Cole  
1818 Tennessee

Alberta Leonard - - - -

26 March 1897 Hamilton  
4 Jan 1978 Tx

Charles Garrett  
1815 Tennessee

Spouse:

Claudette Wakefield  
2 Oct 1946

Margaret Rebecca Garrett -

27 Sept 1854 Texas  
23 Dec 1916

Rebecca North Carolina

## WILLIAM DIAL

Occupation: Farmer in Cave Hill, Ky.

b. 1807, Warren Co., Ky.

d. ca. 1897, Ky.

bur. Lewis Cemetery (buried near father, mother, and brother, according to the wishes of his will dated 3/22/1897)

Father: Thomas Dial-? (Dyal; Doyle)

Mother:

#1 married: November 27, 1828, Butler Co., Ky.

## Polly Bennett

b. Ky. (her birthplace conflicts as listed on her children's marriage bonds-- son Thomas's marriage bond states Warren Co.,; daughter Mary's states Butler Co.)

d. Ky. (Polly possibly died in childbirth in 1846, as William remarried in 1848)

Father:

Mother:

#2 married: February 15, 1848, Logan Co., Ky. (Bk. 2, Pg. 50)

## Elizabeth McMillan

b. ca. 1828, Ky. or Indiana (discrepancy in records)

d. Jan. 15, 1922, Kentucky

bur. Lewis Cemetery near Cave Hill, Ky., in family plot.

Father:

Mother:

## Issues with wife #1:

Warren M. Dial	b. 11/1831	mar. Sarah E.
	d. 1906, Auburn Cem.	
Orleans W. Dial	b. ca. 1834	mar. James S. Shannon
	d.	9/1/1853, Warren Co.
Sarah E. Dial	b. Ca. 1836	mar. Elisha Mobley
	d.	
James S. Dial	b. ca. 1838	mar.
	d. (was living in Missouri in 1922)	
Amanda R. Dial	b. 11/8/1839	mar. Doctor Daniel Clay
	d. 5/10/1895, Ky.	
William F. Dial	b. ca. 1842	mar.
	d.	
Mary E. Dial	b. 5/9/1846, Warren Co.	mar. Francis M. Young
	d.	7/30/1863, Warren Co.
Thomas M. Dial	b. 5/1/1846, Warren Co.	mar. Lutie B. Wood
	d. 10/19/1898, Logan Co.	7/18/1872, Logan Co.

## Issues with wife #2:

John B. Dial	b. 2/1850, Warren Co.	mar. Sarah N. Ewing
	d.	11/30/1871, Logan Co.
Bloomer M. Dial	b. 2/1860, Kentucky	mar. Georgia Bell Ezell
	d.	12/11/1881, Logan Co.
(moved to Texas and was living there in 1922)		
Andrew Jackson Dial	b. 8/26/1863, Ky.	#1mar. Mary Thomas White
"Jack"	b. 9/1/1841, Rison, Ark.	#2mar. Viola Bea Duff
		3/25/1897, Warren Co.
(moved with his family to Arkansas about 1908)		
Robert E. Lee Dial	b. ca. 1869	#1mar. Cindy Jackson
	d. before 1940	#2mar. Ida Landon
		9/9/1910, Warren Co.

(continued)

# WILLIAM DIAL Continued

## Sources:

1850 Warren Co. Census, District 1, Hse. 605  
 1880 and 1900 Warren Co. Census, Stallard Springs, Hse. 93  
 1900 Logan County Census, Auburn Precinct, Hse. 280  
 Logan County Cemetery Book, pg. 157  
 William Dial will, Warren Co., Ky. dated 3/22/1897  
 Elizabeth McMillan Dial Obituary  
 Warren County Marriage Records  
 Logan County Marriage Records  
 Zula Dial Letter  
 Virgie Price Letter

## OBITUARY

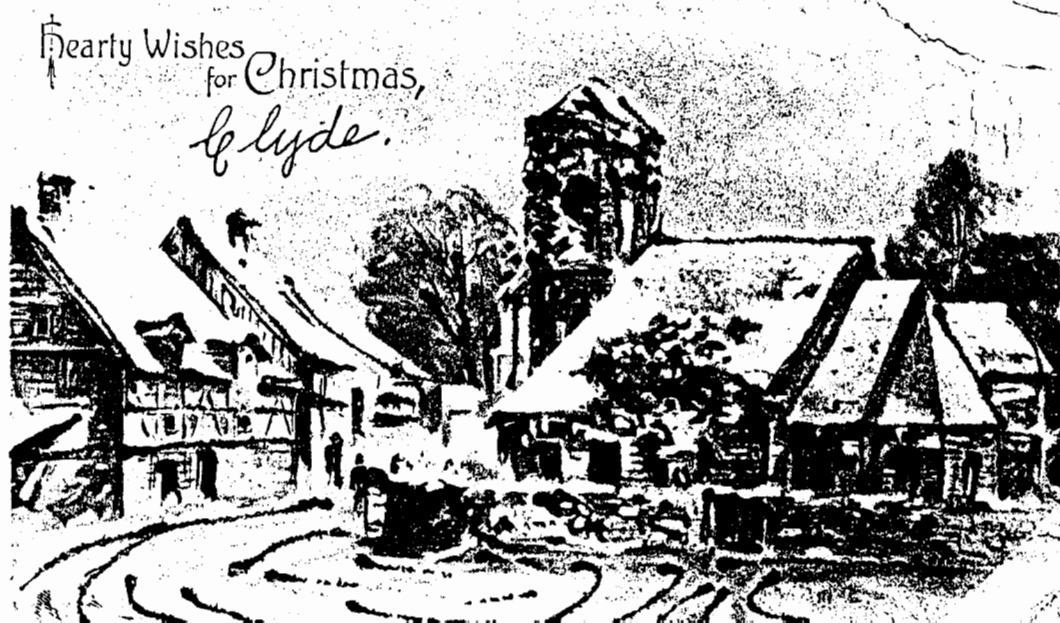
MRS. ELIZABETH DIAL

Went to Her Eternal Sleep in Her Ninety-fourth Year.

Mrs. Elizabeth Dial died Monday, January 15, at her home in the Cave Hill neighborhood after a long life of usefulness. She was the widow of the late William Dial of Cave Hill. The cause of her death was old age, being in her ninety-fourth year. She was of a kind heart, lovable disposition, and numbered her friends by all who knew her.

The deceased is survived by four sons: J.B Dial, of this city; Bloomer Dial of Texas; A. J. Dial of Arkansas; Robert Dial of Cave Hill, and two step-sons, W. F. Dial, who resides on Upper College Street, and J.S. Dial of Missouri.

She gave her heart to God in early girlhood and united with the Cumberland Presbyterian Church and lived a consistent Christian life. The remains were buried in the old family lot near Cave Hill.





## Funeral Notice.

---

*The friends and acquaintances  
of Mr and Mrs J. C. Crofton  
are invited to attend the funeral of  
their son*

WALTER T.,

*to take place from the Cumberland  
Presbyterian Church, this, Satur-  
day, afternoon at 4 o'clock.*

*Services by Rev. J. Agnes  
McDonald.*

*Bowling Green, Ky., Mar. 31, 1888.*

Funeral Notices  
Courtesy

Mildred Collier  
1644 Smallhouse Road  
Bowling Green, Ky. 42101

---

**FUNERAL NOTICE.**

---

*The friends and acquaintances of Wm.  
T. Atkinson, of Clarksville, Tenn., are  
invited to attend the funeral of his wife,*

**ALICE D.,**

*to take place from the C. P. Church  
in this city, to-morrow (Tuesday) morn-  
ing at 10 o'clock.*

*Services by Rev. Jesse S. Grider.*

Bowling Green, Ky., March 26, 1883.

---

---

**FUNERAL NOTICE.**

---

*The friends and acquaintances of Thomas  
Atkinson are respectfully invited to attend  
the funeral of his wife,*

**RACHAEL,**

*from his residence on lower State street, this  
(Saturday) evening at 3 o'clock.*

---

## WILLIAM ALLEN CEMETERY

Cemetery is located 14 miles from Bowling Green, Kentucky on highway 31W North now owned (1986) by Mr. and Mrs. John Perkins. In the 1920's it was badly mutilated by Harry Stone and in 1986 completely obliterated. Copied 1986 by Joseph Stephen Hays - 13790 Louisville Road - Smith's Grove, KY.

1. Elizabeth B. Allen - B. 13 May 1814 D. 7 Oct. 1819 (d/o Wm. Allen & Mary White)
2. Charles Allen - B. 13 Feb. 1836 D. 4 Aug. 1870 (s/o Wm. Allen & Mary White)
3. Mary Allen - B. 26 Jan. 1795 D. 7 Jan. 1873 (wid/o Wm. Allen; d/o Carter White)
4. Elijah Allen - B. 20 July 1826 D. 16 June 1876 (s/o Wm. Allen & Mary White)
5. Violet Allen - B. 15 Nov. 1851 D. 7 May 1883 (At birth named 'Vina' d/o Mary a slave of Wm. Allen)
6. Joseph C. Smith - B. 19 June 1814 D. 9 Jan. 1855 s/o John K. & Elizabeth H. Smith
7. Joseph C. Comfort - B. 13 Jan. 1837 D. 11 Sept. 1845
8. Nancy J. Comfort - dates missing (d/c James & Jane Ann Comfort)
9. A. M. Comfort - footstone only
10. William Allen - Footstone only (B. 22 Sept. 1781 D. 1 Sept. 1863 s/o Charles Allen & Ursula Hendrick)

Also buried without any trace of markers:

11. Elisha Allen - B. 20 July 1826 D. 31 March 1846 s/o Wm. Allen & Mary White
12. Charles Allen - B. c 1751 D. 1827 a Revolutionary Soldier; f/o Wm. Allen
13. Ursula Allen - wife of Charles Allen; d/o William Hendrick
14. Unknown Union Soldier from Michigan killed by Thomas Allen as he rode off on the saddle horse of his sister Martha Allen



WHERE TO WRITE FOR BIRTHS AND DEATHS  
ADDRESSES OF VITAL RECORD OFFICES IN THE UNITED STATES

STATE	ADDRESS	CITY	ZIP	BIRTH	DEATH
Alabama	VR, DPH	Montgomery	36130	\$5	\$5
Alaska	VR, Pouch H-026	Juneau	99811	\$3	\$3
Arizona	VR, DPH, P.O. Box 3887	Phoenix	85030	\$3	\$3
Arkansas	VR, 4815 West Markham St	Little Rock	72201	\$3	\$3
California	VR, DPH, 410 "N" St	Sacramento	95814	\$9	\$5
Colorado	VR, DPH, 4210 East 11th Avenue	Denver	80220	\$6	\$6
Connecticut	VR, DPH, 79 Elm Street	Hartford	06115	\$3	\$3
Delaware	VR, DPH, State Health Bldg	Dover	19901	\$2.50	\$2.50
Dist. of Col.	VR, 615 Pennsylvania Avenue, NW	Washington DC	20004	\$3	\$3
Florida	VR, P.O. Box 210	Jacksonville	32231	\$2.50	\$2.50
Georgia	VR, Room 217-H, 47 Trinity Ave., SW	Atlanta	30334	\$3	\$3
Hawaii	VR, DPH, P.O. Box 3378	Honolulu	96801	\$2	\$2
Idaho	VR, Statehouse	Boise	83720	\$6	\$6
Illinois	VR, DPH, 535 West Jefferson St	Springfield	62761	\$10	\$10
Indiana	VR, DPH, P.O. Box 1964	Indianapolis	46206	\$4	\$4
Iowa	VR, Lucas State Office Bldg	Des Moines	50319	\$6	\$6
Kansas	VR, 6700 South Topeka Avenue	Topeka	66620	\$6	\$6
Kentucky	VR, DPH, 275 East Main Street	Frankfort	40621	\$4	\$4
Louisiana	VR, P.O. Box 60630	New Orleans	70160	\$6	\$5
Maine	VR, Station II, Statehouse	Augusta	04333	\$3	\$3
Maryland	VR, P.O. Box 13146	Baltimore	21203	\$2	\$2
Massachusetts	VR, 105 McCormack Bldg., 1 Ashburton Pl.	Boston	02108	\$3	\$3
Michigan	VR, 3500 North Logan Street	Lansing	48914	\$10	\$10
Minnesota	VR, 717 Delaware Street, SE	Minneapolis	55440	\$5	\$5
Mississippi	VR, P.O. Box 1700	Jackson	39205	\$10	\$10
Missouri	VR, Department of Health & Welfare	Jefferson City	65101	\$5	\$5
Montana	VR, DPH	Helena	59601	\$5	\$5
Nebraska	VR, P.O. Box 95007	Lincoln	68509	\$5	\$5
Nevada	VR, Capitol Complex	Carson City	89710	\$4	\$4
New Hampshire	VR, Health & Welfare Bldg., Hazen Drive	Concord	03301	\$3	\$3
New Jersey	VR, CN 360	Trenton	08625	\$5	\$5
New Mexico	VR, P.O. Box 968	Santa Fe	87503	\$4	\$4
New York State	VR, Empire State Plaza, Tower Bldg.	Albany	12237	\$5	\$5
New York City	VR, DPH, 125 Worth Street	New York	10013	\$4	\$4
North Carolina	VR, P.O. Box 2091	Raleigh	27602	\$3	\$3
North Dakota	VR, Office of Statistical Services	Bismark	58505	\$5	\$5
Ohio	VR, DPH, 65 South Front Street	Columbus	43215	\$3	\$3
Oklahoma	VR, DPH, P.O. Box 53551	Oklahoma City	73152	\$2	\$2
OREGON	VR, P.O. Box 116	Portland	97207	\$5	\$5
Pennsylvania	VR, P.O. Box 1528	New Castle	16103	\$4	\$4
Rhode Island	VR, Rm 101 Cannon Bldg., 75 Davis St	Providence	02908	\$5	\$5
South Carolina	VR, 2600 Bull Street	Columbia	29201	\$5	\$5
South Dakota	VR, Joe Foss Office Bldg.	Pierre	57501	\$5	\$5
Tennessee	VR, DPH, Cordell Hull Building	Nashville	37219	\$6	\$4
Texas	VR, DPH, 1100 West 49th St	Austin	78756	\$5	\$5
Utah	VR, DPH, P.O. Box 2500	Salt Lake City	84110	\$5	\$5
Vermont	VR, DPH, Box 70	Burlington	05402	\$3	\$3
Virginia	VR, DPH, P.O. Box 1000	Richmond	23208	\$5	\$5
Washington	VR, P.O. Box 9709, ET-11	Olympia	98504	\$6	\$6
West Virginia	VR, DPH, State Office Building #3	Charleston	25305	\$5	\$5
Wisconsin	VR, DPH, P.O. Box 309	Madison	53701	\$7	\$5
Wyoming	VR, Hathaway Building	Cheyenne	82002	\$2	\$2

VR = Vital Records                      DPH = Department of Public Health  
Fees are subject to change without notice

## BOOK REVIEWS

**1860 RUSSELL COUNTY, KENTUCKY CENSUS.** 1986. Transcribed, researched and compiled by James D. Garner. Indexed by Deborah M. Hall and Libby D. Garner. Soft cover, 81 pp. Full-name index. Order from James D. Garner, 1215½ Chestnut Street, Bowling Green, KY 42101. \$12.50 (postpaid).

Included in this excellent transcription of residents of Russell County in 1860, is household number, age of person, maiden and middle names (researched from other sources), and place of birth. A separate list of those married within the year is included. Also, a separate list of slaveholders is included.

**SOME COLLIER FAMILIES AND FOLKS THEY'RE KIN TO.** 1982. Researched and authored by Leroy and Mildred Collier. Soft cover, 35pp. Full-name index. Order from Leroy/Mildred Collier, 1644 Smallhouse Road, Bowling Green, KY 42101. \$7.50 (postpaid). Kentucky residents add 5% sales tax).

This book is a record of the descendants of Harbert and Mahala (Fuller) Collier who were married in Granville Co., NC, on 20 Oct 1792. They moved to Chatham Co., NC, before 1798 and were in Henry Co., TN., by 1826. Their descendants settled in Henry and Weakley Cos., TN, and places North, South, and West.

A first-name index which contains over 735 names has been included for the convenience of those who may use this book for reference. Over 190 different surnames appear in index.

Some allied lines cited include the following: ADAMS, BOWDEN, BOWLES, COHN, DAWSON, FRIELDS, FRIZZELL, GREGORY, HOGAN, JONES, LATTIMORE, MOON, OLIVE, PATTERSON, SKAGGS, SMITH, SNIPES, STANTON, STEWART, TODD, WAGGENER, WATTS, and WHITE.

**A COBERLEY/COBERLY/CUBERLEY GENEALOGY: 1690-1985.** 1985. Compiled by John Bradley Arthaud, M.D. Hard cover, 688 pages, full-name index. Order from James A. Coberly, c/o J. William Coberly, 445 N. 35th St., Decatur, Illinois 62521. \$50.00, plus \$2.50 postage (Il. residents add appropriate sales tax)

Dr. James Stell Coberly, a Revolutionary War patriot, settled in Hampshire County, Virginia by 1772. This book identifies more than 6800 descendants of Dr. Coberly. His descendants are known to have been born in 43 states and 16 foreign countries. Descendants of the first settlers at Jamestowne, Huguenots and more than 100 descendants of eight passengers on The Mayflower are included in the Coberly Family. Over 1000 Coberly descendants share ancestry with one or more of the following U.S. Presidents: Grant, Hayes, Teddy Roosevelt and Franklin D. Roosevelt.

Allied families included in this work are:

BEAN	GARR	PENDLETON	VANDEVENDER
BROWN	GOLDEN	MATHEWS	VANSCOY
CHENOWETH	HINKLE	MELTON	WALLING
CUNNINGHAM	JAMES	PENDLETON	WATSON
DE(A)VER	JETT	PHILLIPS	WESTFALL

An excellent work. A must for any major library.

## BOOK REVIEWS

ANCESTRAL GRAVES IN WARREN COUNTY, KENTUCKY. 1986. By O. L. Thomas. Soft back, 363 pp., plus index. Order from O. L. Thomas, 333 Hillwood Drive, Bowling Green, KY 42101. \$20.00 (plus \$2.00 postage).

The area of Warren County included in this work extends from the Barren River Road area and sweeps southwest to Interstate 65. Some graveyards just over the county lines have also been included.

Mr. Thomas recorded these 148 graveyards over a twenty-year period. Many of these listings are old family graveyards "far from the beaten trails" which are being destroyed at a rapid rate. Even now, many tombstones recorded here no longer exist.

This work offers an excellent collection of the burial grounds in much of the western half of Warren County, Kentucky.

WILLIAM DUNCAN WILSON. 1986. Compiled by Stephen Lynn King. Soft cover, 77 pages, photographs, full-name index. Order from Stephen Lynn King, 250 Oak St., Bowling Green, KY 42101. \$10.00, plus \$1.00 postage & handling.

This is a history of William Duncan Wilson's Civil War years while serving in the 46th Tenn. Inf. Regt. Confederate States Army. Preceding the war years is the genealogical background of the WILSON and KELLY families. Beginning in 1790, while the family was living in Rockingham and Caswell Counties in North Carolina, the book includes the family's settling in the Tennessee and Kentucky area. Also included in this work are Confederate military, medical, prison, and pension records from the Archives in Washington, D.C. and the State Archives in Nashville, Tn. There are also census records and family group sheets included. The family is of English & Scottish descent.

THOMAS ENGLISH, DESCENDANTS AND SOME OF THEIR KIN. 1986. By Leroy and Mildred (English) Collier. Hard cover, 165 pp. Full-name index. Order from Leroy/Mildred Collier, 1644 Smallhouse Road, Bowling Green, KY 42101. \$20.00, plus \$2.00 postage. Ky residents should also add \$1.00 postage.

This book is a record of some descendants of Thomas and Ann English who were residents of Durham County England in the early 1600s. They moved to Westmeath County, Ireland between 1641 and 1650. Their great grandson, JOSHUA ENGLISH, SR., migrated to America and arrived at Charleston, S.C., on 22 July 1753. The main body of this book deals with the descendants of Joshua and is divided into thirteen sections, each devoted to a record of the descendants of one member of the English family. The book is fully documented with a detailed bibliography at the end of each of the thirteen sections.

A first name index containing 4200 names has been included for the convenience of those who may use this book for reference. Over 900 different surnames appear in this index. Allied lines, cited extensively, include the following surnames: AKINS, ALEXANDER, BAKER, BLAIR, BOATRIGHT, BRADLEY, BROWNLOW, CAMPBELL, CARPENTER, COLLINS, COUSAR, FRY, GARRETT, HANNAH, HAYS, HOGGATT, HUNT, JONES, MORRIS, PARKER, PETTY, RAGAN, SMITH, STORY, TACKER, TOMLINSON, WEST, WILSON, WILLIFORD, and YOKLEY.

## BOOK REVIEWS

ALLEN COUNTY, KENTUCKY CEMETERY & GRAVEYARDS REVISITED: VOL. II  
(With a Collection of Genealogical Notes). 1987. Compiled by Martha W. Jackson. Pre-publication price of \$12.00, plus \$1.00 postage, is now being accepted for this volume. Order from Martha W. Jackson, 509 Pea Ridge Road, Scottsville, KY 42164.

This volume will be approximately 200 pages--including 70 cemeteries never before published. It will include a full-name index. Pre-publication price is available until February 1, 1987. Orders received after that date will be \$15.00, plus \$1.00 postage.

THE BARRENS: A FAMILY HISTORY OF SOUTH CENTRAL KENTUCKY. 1986. By Emery H. White. Soft back, 112 pp. Full-name index and four maps. Order from Emery H. White, 215 Windsor Avenue, Glasgow, 42141. \$10.00 (plus \$1.50 postage & handling).

This book is primarily a family history of the WHITE, MAXEY, POPE, JONES, LAMBERT, HAYS, CLACK, REYNOLDS, STEELE, KIRKPATRICK, RICHARDSON, MANNEN and GARDNER families in the south central area of Kentucky from 1780 to the present. Some of the families are traced back to the 1600s in Virginia. In addition to genealogical information, events are described to make this book interesting reading.

CALLAM BAILEY: EARLY SETTLER OF BARREN COUNTY, KENTUCKY. 1983.

By Alice Morrey Bailey. Soft back, 191 pp. Photos and two fold-out charts. For price, send SASE to South Central Kentucky Historical & Genealogical Society, Box 80, Glasgow, KY 72141.

This work deals with Thomas Bailey of Goochland Co., VA; Callum Bailey of Goochland & Albemarle Cos., VA; Callum Holman Bailey (b. 1749), early settler of Barren County, Kentucky; and related lines of the Baileys--where they are and where they went (up to 9 generations). Also included is land grants, deeds, wills, interviews, etc., collected by Mrs. Bailey and her late husband over a period of several years, while researching this family. This should be a most valuable aid to those interested in this family.

LEE FAMILY DATA FROM THE STATE OF VIRGINIA: MARRIAGES, WILLS AND MISCELLANEOUS. Soft back, 20 pp. For price, send SASE to Elder Researchers, P.O. Box 41433, Indianapolis, Indiana 46241.

This work includes a listing of the Lee marriages in the state of Virginia from 1700 to 1900; a listing of Lee wills and estate settlements (1700s) in various Virginia counties; the wills of Richard, Henry and Hancock Lee; and a short biography of Richard Henry Lee (1734-1794).

COSHOCTON COUNTY, OHIO MARRIAGES 1811-1823. Compiled by Colleen Corwin Ridlen. Soft back, 20 pages. For price, send SASE to Elder Researchers, P.O. Box 41433, Indianapolis, Indiana 46241.

Marriages arranged alphabetically by both groom and bride surname. Gives groom, bride and date of marriage.

QUERIES

WOOD  
SPEEKS  
TRUNDEL  
SWAIN

Seeking parents of Lashley WOOD, born 1740 in Prince George County, Maryland. He came to Nelson Co. KY before 1800 and was living in Logan Co., KY by 1804. He died 1809. Lashley's brothers & sisters were: John, Robert, Elizabeth (SPEEKS), Hannah (TRUNDEL), Alice (SWAIN), and Elijah. Half-brothers were James and Thomas. I plan to publish a book on the WOOD family within the next year.  
MARGARET GERHART WOOLF, 7515 Arlington, Raytown, MO 64138.

TERRY

ERA STINSON, 615 Fairdale Ave., Bowling Green, KY 42101, would like to correspond with person who placed the gravestones at Kennerly Chapel Cemetery (Logan Co., KY--near Lewisburg) at grave sites of Nancy Williams Terry and Cora Taylor Terry. She will exchange information on the Nancy Terry family.

SHOOK

Would like to exchange information on the SHOOK family--Georgia, North Carolina & Tennessee.  
JANIE TURNER, 210 April Way, Bowling Green, KY 42101.

WHITE  
GARRETT

Who were the parents of Martha White (ca. 1793, S.C.; after 1878, Gibson Co., Ind.) who married 16 Aug 1811 in Warren Co., Shuble GARRETT? There is strong circumstantial evidence that Martha was the daughter of Solomon White who settled in Warren Co. by 1800. Documentation that Solomon was Martha's father is needed.  
JOHN BRADLEY ARTHAUD, M.D., 3201 Woodkirk Drive, Columbia, MO 65203.

NEEL  
CARRETT

Need the identity of the parents of John and Hannah NEEL, parents of Martha NEEL (ca. 1792, South Carolina; 1850/55, Gibson Co., Ind.). Martha married 12 Jan 1809, in Warren Co., Amos CARRETT. Any data on the Neel ancestry would be welcome.  
JOHN BRADLEY ARTHAUD, M.D., 3201 Woodkirk Drive, Columbia, MO 65203.

JENKINS  
ATCHISON  
(ETCHISON)

Need information on Minerva Victoria ATCHISON (ETCHISON) born c. 1805 in KY. In 1823, she married Joel Jenkins, son of William JENKINS of Butler Co., KY. They were supposed to have been married in Bowling Green, KY. We need information about her parents and other ancestors.  
SONDRA K. JANDER, College Heights P.O.B. U-2, Bowling Green, KY 42101.

QUERIES

DIAL  
McMILLAN  
BENNETT  
SHANNON  
MOBLEY  
CLAY  
YOUNG  
WOOD  
EWING  
EZELL  
WHITE  
JACKSON  
LANDON  
DUFF

Would like to trade info with anyone with knowledge of the DIAL/DYAL family of Logan and Warren Co., KY. William DIAL married 1st Polly BENNETT, 2nd Elizabeth McMILLAN (b. 1828, d. 1922). Who were Elizabeth McMILLAN's parents? William DIAL (b. 1807, d. 1897) had children named: Warren M. married Sarah E.; Orleans W. married James S. SHANNON; Sarah E. married Elisha MOBLEY; James S. married ?; Amanda R. married Doctor Daniel CLAY; William F. married ?; Mary E. married Francis M. YOUNG; Thomas M. married Lutie B. WOOD; John B. married Sarah N. EWING; Bloomer M. married Georgia Bell EZELL; Andrew Jackson DIAL married #1 Mary Thomas WHITE, #2 Viola Bea DUFF; Robert E. Lee DIAL married #1 Cindy JACKSON, #2 Ida LANDON. I have info on above families. Will trade with anyone who can help further completion of this family.  
DARLENE PRICE, 665 Brandenburgh Way, Roswell, Georgia 30075.

BOLLES  
LOWERY

Reuben BOLLES married 1829 in Warren Co., KY, Susan LOWERY. Pleasant BOWLES signed their marriage bond. Any information on Pleasant appreciated.  
ELLEN BYRNE, 8566 Lancaster Dr., Rohnert Park, CA 94928.

MATLOCK  
LINK/LYNK  
SUMMERS

Need origins and life information about John W. MATLOCK, b. ca. 1856, and his first wife Angie LINK/LYNK who married ca. 1880 in Logan/Simpson/Warren Co., KY. Two of their known children were John Jackson, b. 1891, and Luke, both born in Simpson Co. There may have been others. Also, need ancestry of Elizabeth M. SUMMERS, born 1827 Warren Co., died 1900 Logan Co., KY, married 1848 Logan Co. to James Monroe MATLOCK.  
VAN A. STILLEY, 3812 Sweetbriar Road, Wilmington, North Carolina 28403.

NUNNALLY  
COX

John Cox married Sarah Nunnally in Virginia, Henry County, Dec. 26, 1777, according to various Cox family researchers. I am looking for the actual marriage bond or the book source from which this date was extracted. If anyone can supply the actual printed source, please advise. To date, this marriage date appears in many researchers' books, but the actual printed source eludes us all. My research in Henry County records does not produce this date. Please help verify.  
DARLENE PRICE, 665 Brandenburgh Way, Roswell, Georgia 30075.

QUERIES

- BULLOCK** Need info on Curtis Bullock b. 1817 in Ky. Believed to have been a Baptist minister & Union soldier. My grandfather, Peter Elias was born 8 Mar 1850. John was an older brother. Younger was Elliot Coen (Cene) b/ 8 May 1855. Sister Julia married a Hubble. All lived in Carroll Co., Mo. Curtis died 17 Jan 1889 near Bosworth, Carroll Co., Mo. and buried in Bethlehem Cem. Would like birth date & place & parents' names.
- ZEIGLER** Martha ZIEGLER was wife of Curtis & from Ohio. 1880 census shows her father b. in Pa. & her mother b. in Va. Martha was b. 1820. Buried by husband. Alsace-Lorraine figures in their background. Margaret Bullock Winkenhoefer, 2138 Cemetery Rd, Bowling Green, Ky 42101
- DEAN** Need parents & birthplace of George Washington Dean b. 1809 in east Tenn. As a widower in 1837 he took sons John b. 1834 and Harvey b. 1836 to Mo. swimming his horse across the Mississippi R. He married Rachel Dillard Johnston 17 Mar 1838 in Cooper Co, Mo. Mary Malvina was b. 17 Dec 1838 in Carlinville, Ill. Family returned to Mo. settling in Carrollton, Carroll Co. Mo. 8 more children were born. George Washington Dean d. 19 Feb 1870 near Bosworth, Carroll Co., Mo. & is buried in Bethlehem Cem. Rachel Dillard Johnston Dean d. 22 Sept 1851 in Bosworth & b. in Bethlehem. She was b. 20 Dec 1815 near McMinnville, Warren Co., Tn. the daughter of Alexander Johnston Jr. b. 15 Jul 1789 in N. C., d. 22 Feb 1839 in Cooper Co., Mo. & Mary HAMMONDS b. 7 Mar 1795, d. 22 Sept 1863.
- JOHNSTON** Would like info on the Hammonds of McMinnville, Warren Co, Tn area. Margaret Bullock Winkenhoefer, 2138 Cemetery Rd, Bowling Green, Ky 42101
- HAMMONDS**
- CANON** Who knows the parents of John Morgan CANON b. 18 Mar 1837 in Uniontown, Fayette Co., Pa? Relatives established Canonsburg. John served with Union forces along with brother, Pressly, who was killed in last week on conflict. 20 April 1864 he married Sarah Elizabeth Darby b. 18 Jul 1838. She was born in Alliance, Ohio. George Darby was a brother. She told of the Johnstown flood & Upper Darby, Pa. The Lilleys of pharmaceutical fame were kin. Brown DeMuth was a relative. John & Sarah lived in Forest City, Holt Co., Mo, Hiawatha, Brown Co., Ka & Frisco, Canadian Co, Ok. Terr. John Morgan Canon was president of the first Board of Regents of the Univ. of Ok. He died in office as sheriff of Canadian Co. & his son, Pressly Carlane, succeeded him. Dates & places appreciated. Margaret Bullock Winkenhoefer, 2138 Cemetery Rd, Bowling Green, Ky 42101
- DARBY**
- EDWARDS** James Buchanan Edwards was b. Tn 1820. Mary Allen was b. Tn 1823. Families of these 2 migrated to Ill. where James & Mary wed. Lived in Ocoela, Clarke Co., Iowa where my grandmother was b. 11 Jun 1868.
- ALLEN** Artie Missie told of the sky getting dark, the stars comin out and the earth shaking. This leads me to believe it to be the New Madrid earthquake & that the Edwards & Allens lived in central or west Tenn. In 1886 James & Mary Edwards were in Beaver Co., No-Man's-Land which is now the panhandle of Okla. James died on Palo Duro Creek 14 Aug 1888. Mary died at home of a daughter in 1909 at Ava, Douglas Co., Mo. Elizabeth Switzer Deweese and Deliah Winnerholm lived in Ava. Would like Tn origins. Margaret Bullock Winkenhoefer, 2138 Cemetery Rd, Bowling Green, Ky 42101

### QUERIES

HINES  
PUCKETT  
WILEY  
McGINNIS

In "Hines Family of Butler and Warren Counties, KY" (Vol. IX, No. 2 LONGHUNTER, pp. 65 & 67), Elizabeth "Betsy" Hines (#7), married 25 Nov 1810 John H. Puckett, not James. Mrs. Morris (see below) also has information on the Chesterfield Watts Wiley family and the Hezekiah J. McGinnis family which she will share with anyone interested.  
Correction supplied by CHARLINE WILEY MORRIS, P.O. Box 507, Linden, Texas 75563.

CLAYPOOL  
ROBERTSON

For those decendants of Stephen CLAYPOOL, Jr. and Elizabeth ROBERTSON: Stephen did not die in 1862 as recorded in some family histories. He was still living in 1910 in Allen County, Kentucky, in the home of his son-in-law, Robert Pullam. His age at that time is listed as 93.  
Information supplies by LAURITA SLEDGE, 835 Sledge Road, Alvaton, KY 42122.

### THE SOCIETY OF KENTUCKY PIONEERS

The Society of Kentucky Pioneers was formed in 1982 to honor our Kentucky pioneer ancestors and to further genealogy in general and Kentucky genealogy in particular.

To be eligible for membership one must document that he or she is descended from an ancestor who resided in Kentucky on or before 31 December 1800. By 1800, there were 40 counties in Kentucky. There were also more than 200,000 people living in Kentucky by this date.

Kentucky has been called the "Daughter of the East and Mother of the West." Therefore, the percentage of Americans west of the Cumberland Gap who have Kentucky ancestry must be very high.

If you are interested in honoring your ancestor and joining this group, send a self-addressed stamped envelope to SOCIETY OF KENTUCKY PIONEERS, Rte. 4, Box 314, Utica, KY 42376, requesting an application.

[above information from Society of Kentucky Pioneers 1983 Yearbook compiled by Sam McDowell (McDowell Publications: Utica, KY, 1983).7