

1988

# Industrial Resources: Hardin County - Elizabethtown

Kentucky Library Research Collections  
Western Kentucky University, [spcol@wku.edu](mailto:spcol@wku.edu)

Follow this and additional works at: [https://digitalcommons.wku.edu/hardin\\_cty](https://digitalcommons.wku.edu/hardin_cty)

 Part of the [Business Administration, Management, and Operations Commons](#), [Growth and Development Commons](#), and the [Infrastructure Commons](#)

---

## Recommended Citation

Kentucky Library Research Collections, "Industrial Resources: Hardin County - Elizabethtown" (1988). *Hardin County*. Paper 25.  
[https://digitalcommons.wku.edu/hardin\\_cty/25](https://digitalcommons.wku.edu/hardin_cty/25)

This Report is brought to you for free and open access by TopSCHOLAR®. It has been accepted for inclusion in Hardin County by an authorized administrator of TopSCHOLAR®. For more information, please contact [topscholar@wku.edu](mailto:topscholar@wku.edu).

**RESOURCES FOR ECONOMIC DEVELOPMENT**

---

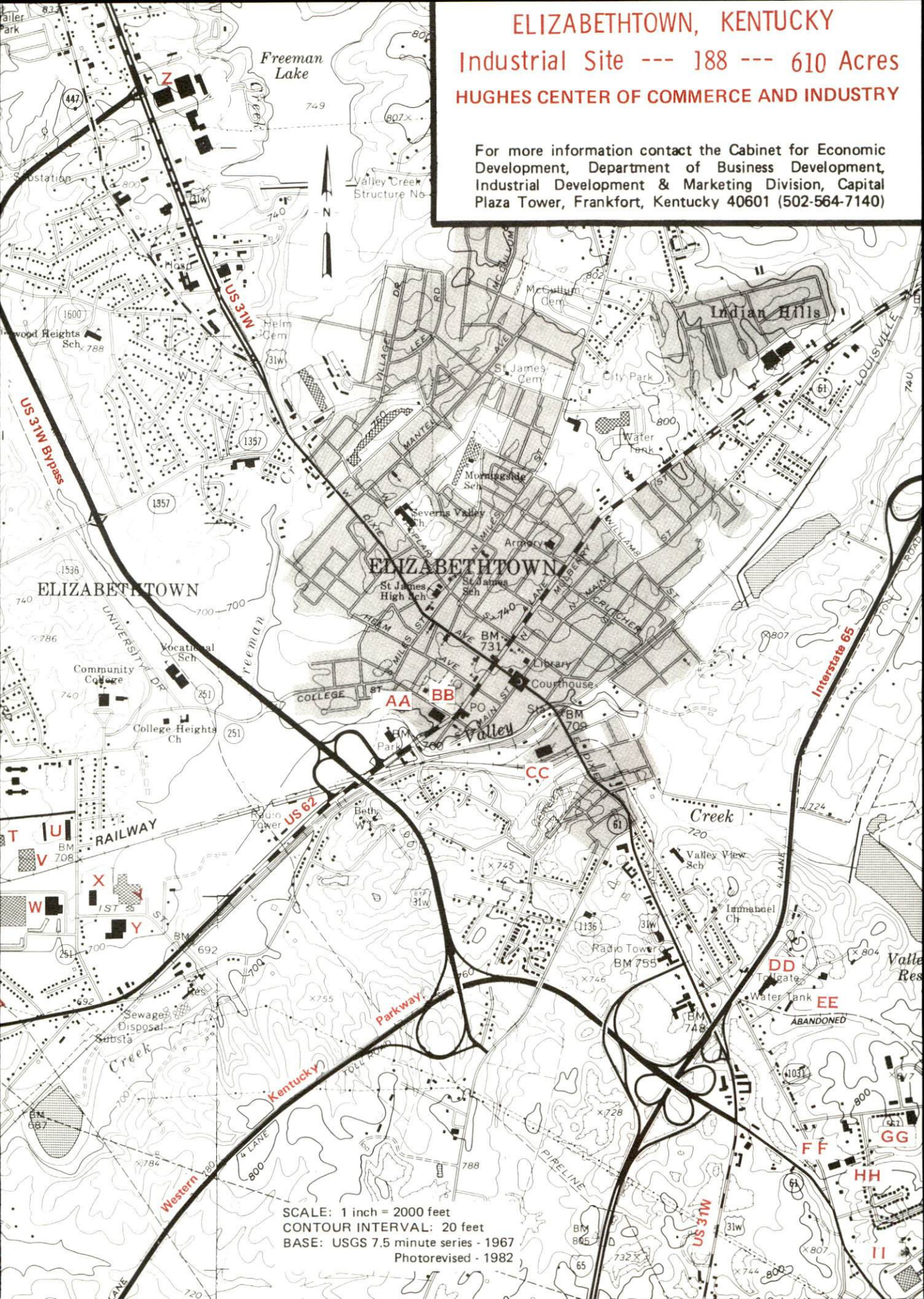
# Elizabethtown



# ELIZABETHTOWN, KENTUCKY

Industrial Site --- 188 --- 610 Acres  
HUGHES CENTER OF COMMERCE AND INDUSTRY

For more information contact the Cabinet for Economic Development, Department of Business Development, Industrial Development & Marketing Division, Capital Plaza Tower, Frankfort, Kentucky 40601 (502-564-7140)



SCALE: 1 inch = 2000 feet  
CONTOUR INTERVAL: 20 feet  
BASE: USGS 7.5 minute series - 1967  
Photorevised - 1982

**Existing Industries**

- A** A-P Technoglass
- B** Ambrake Corporation
- C** Accumetric, Inc.
- D** Electronic Data Systems Corp.
- E** Chromatic Color Corporation
- F** A & D Commercial Distribution Center
- G** Cytech Products, Inc.
- H** Robco Products
- I** Ruan Leasing Company
- J** Edwards Construction Company
- K** Thomas Produce
- L** Roller Bearing Industries, Inc.
- M** Jacobi Sales, Inc.
- N** Bluegrass Tank & Equipment Co.
- O** Inland Packaging, Inc.
- P** I. W. Industries Inc.
- Q** Alcatel
- R** Collis Inc.  
Elizabethtown Div.
- S** Vermont American Corp.  
Magna Div.
- T** Celotex Corporation
- U** A & D Moving and Storage
- V** Bowman Distribution
- W** Gates Rubber Co.
- X** Cooper Industries  
Bussmann Div.
- Y** Crucible Materials Corp.  
Crucible Magnetics Div.
- Z** Coca-Cola Bottling Co.
- AA** E'town Sportswear Corp.
- BB** Diecks Block & Supply Co.
- CC** Armour Food Co.
- DD** Kentucky Galvanizing Co., Inc.
- EE** Modern Welding Co., Inc.
- FF** Clinton Industries Inc.
- GG** E'town Truss Inc.
- HH** E M B Corporation
- II** Dow Corning Corporation

**LOCATION:** Within southwestern city limits of Elizabethtown  
**ZONING:** Industrial (I-1)

**HIGHWAY ACCESS:** Park is served by paved internal access roads (Ring Road and Peterson Drive); US 62 (4-lane) along southern boundary. Western Kentucky Parkway interchange approximately 2.4 miles east and Interstate 65 interchange approximately 3.2 miles east via US 62 and US 31W Bypass.

**RAILROAD:** Paducah and Louisville Railroad passes through park

**WATER:** Elizabethtown Water and Gas Department  
 Industrial capacity water service provided to all areas of park

**SEWERAGE:** Elizabethtown Water and Gas Department  
 Industrial capacity sewer service provided to all areas of park

**NATURAL GAS:** Elizabethtown Water and Gas Department  
 Industrial capacity gas service provided to all areas of the park

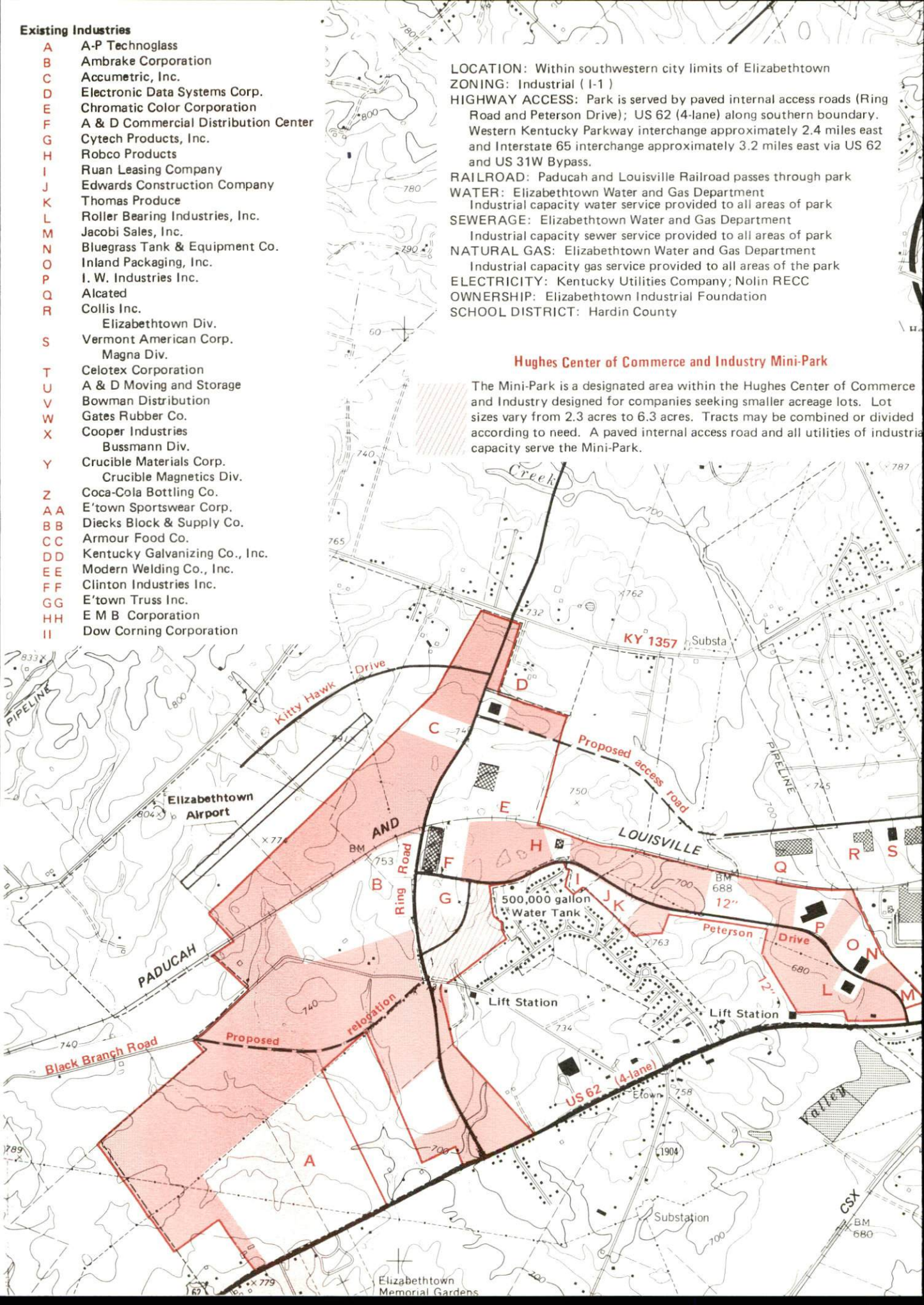
**ELECTRICITY:** Kentucky Utilities Company; Nolin RECC

**OWNERSHIP:** Elizabethtown Industrial Foundation

**SCHOOL DISTRICT:** Hardin County

**Hughes Center of Commerce and Industry Mini-Park**

The Mini-Park is a designated area within the Hughes Center of Commerce and Industry designed for companies seeking smaller acreage lots. Lot sizes vary from 2.3 acres to 6.3 acres. Tracts may be combined or divided according to need. A paved internal access road and all utilities of industrial capacity serve the Mini-Park.



**RESOURCES FOR ECONOMIC DEVELOPMENT**

**ELIZABETHTOWN, KENTUCKY**

Prepared by  
The Kentucky Department of Business Development  
Division of Research and Planning  
in cooperation with  
The Elizabethtown-Hardin County Chamber of Commerce  
and  
The Elizabethtown Industrial Foundation

1988

Program manager - Andrew Dennis; research - Keith Roberts; clerical - Bobbi Graves; graphics - Tony Cecconi, Robert Owens, Pat Coleman; cartography - Site Evaluation Branch, Division of Industrial Development and Marketing. Cost of printing paid from state funds.

TABLE OF CONTENTS

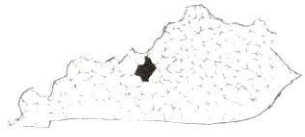
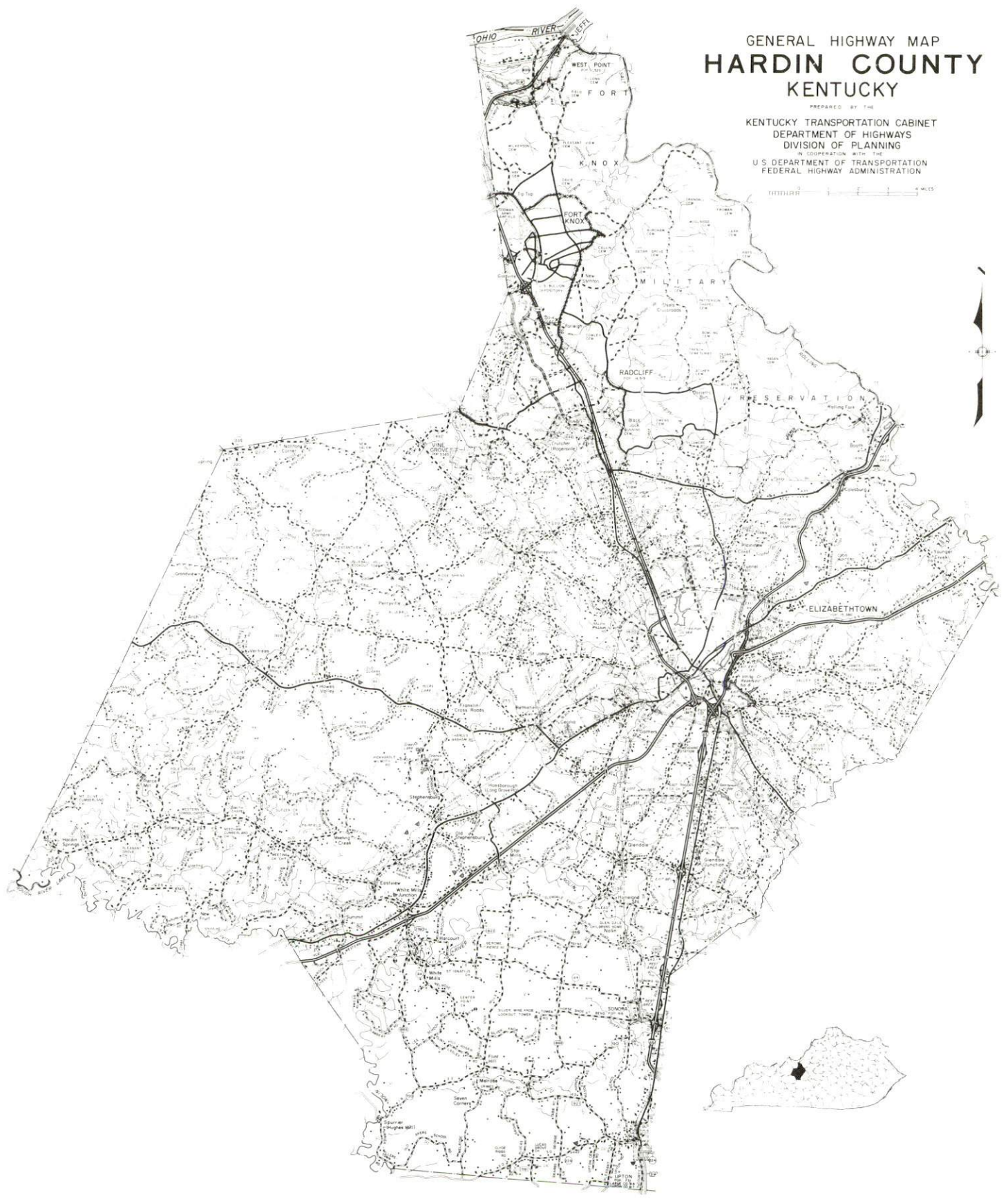
<u>Chapter</u>	<u>Page</u>
INDUSTRIAL SITES . . . . .	i
ELIZABETHTOWN, KENTUCKY - A RESOURCE PROFILE . . . . .	1
THE LABOR MARKET STATISTICS . . . . .	2
Labor Market Area Map . . . . .	2
Population . . . . .	3
Population Projections . . . . .	3
Unemployment Rates, 1980-1987 - Line Chart . . . . .	4
Labor Force Characteristics of Residents, 1987 . . . . .	5
Selected Components of Nonagricultural Employment, by Place of Work, 1987 . . . . .	5
Estimated Male Labor Supply . . . . .	6
Estimated Female Labor Supply . . . . .	6
Average Placement Wages . . . . .	7
Per Capita Personal Income . . . . .	7
Average Weekly Wages of Workers Covered by Unemployment Insurance F. Y. 1986-87 - Bar Chart . . . . .	8
Average Weekly Wages by Industry, by Place of Work, 1987 . . . . .	9
EXISTING INDUSTRY . . . . .	10
Major Elizabethtown Manufacturing Firms, Their Products and Employment . . . . .	10
Labor Organizations in Manufacturing Firms . . . . .	12
Selected Industrial Services . . . . .	13
TRANSPORTATION . . . . .	14
Rail . . . . .	14
Highways . . . . .	14
Truck Service . . . . .	16
Air . . . . .	17
Air Express Service . . . . .	17
Water . . . . .	17
POWER AND FUEL . . . . .	18
Electricity . . . . .	18
Natural Gas . . . . .	18
WATER AND SEWERAGE . . . . .	19
Public Water Supply . . . . .	19
Sewerage . . . . .	21

<u>Chapter</u>	<u>Page</u>
CLIMATE . . . . .	22
LOCAL GOVERNMENT . . . . .	23
Structure . . . . .	23
Planning and Zoning . . . . .	23
Local Fees and Licenses . . . . .	23
State and Local Property Taxes . . . . .	24
Combined State and Local Rates Per \$100 Valuation, 1987 . . . . .	24
Safety . . . . .	25
Police . . . . .	25
Fire . . . . .	25
Rescue Service . . . . .	25
Refuse Collection and Disposal . . . . .	25
EDUCATION . . . . .	26
Public Schools . . . . .	26
Nonpublic Schools . . . . .	26
Area Colleges and Universities . . . . .	27
Vocational Training . . . . .	28
HEALTH . . . . .	29
Local Medical Personnel . . . . .	29
Hospitals . . . . .	29
Other Medical Facilities . . . . .	29
Ambulance Service . . . . .	29
OTHER LOCAL FACILITIES . . . . .	30
Communications . . . . .	30
Library Services . . . . .	30
Religious Institutions . . . . .	31
Financial Institutions . . . . .	31
Hotels and Motels . . . . .	31
RECREATION . . . . .	32
COMMUNITY IMPROVEMENTS . . . . .	35



# GENERAL HIGHWAY MAP HARDIN COUNTY KENTUCKY

PREPARED BY THE  
KENTUCKY TRANSPORTATION CABINET  
DEPARTMENT OF HIGHWAYS  
DIVISION OF PLANNING  
U.S. DEPARTMENT OF TRANSPORTATION  
FEDERAL HIGHWAY ADMINISTRATION



## ELIZABETHTOWN, KENTUCKY - A RESOURCE PROFILE

Elizabethtown, the county seat of Hardin County, is located in north central Kentucky at the intersection of several major highway systems. The city is situated 44 miles south of Louisville, Kentucky; 84 miles southwest of Lexington, Kentucky; 131 miles northeast of Nashville, Tennessee; and 142 miles southwest of Cincinnati, Ohio. The city had a 1986 estimated population of 16,390 persons.

Hardin County, covering a land area of 629 square miles, is located primarily in Kentucky's Mississippian Plateaus Region, an area of gently rolling plains and uplands. The topography of the county is diverse, ranging from limestone plains in the eastern and central portions of the county, to steep high ridges further west. The county had a 1986 estimated population of 93,811 persons.

**The Economic Framework** - The total number of Hardin County residents employed in 1987 averaged 31,400. Manufacturing firms in the county reported 4,200 employees; wholesale and retail trade provided 7,200 jobs; 3,320 people were employed in service occupations; state and local government accounted for 3,830 employees; and contract construction firms provided 1,300 jobs.

**Labor Supply** - There is a current estimated labor supply of 13,310 men and 19,670 women available for industrial jobs in the labor market area. In addition, from 1988 through 1992, 10,930 young men and 10,440 young women in the area will become 18 years of age and potentially available for industrial jobs.

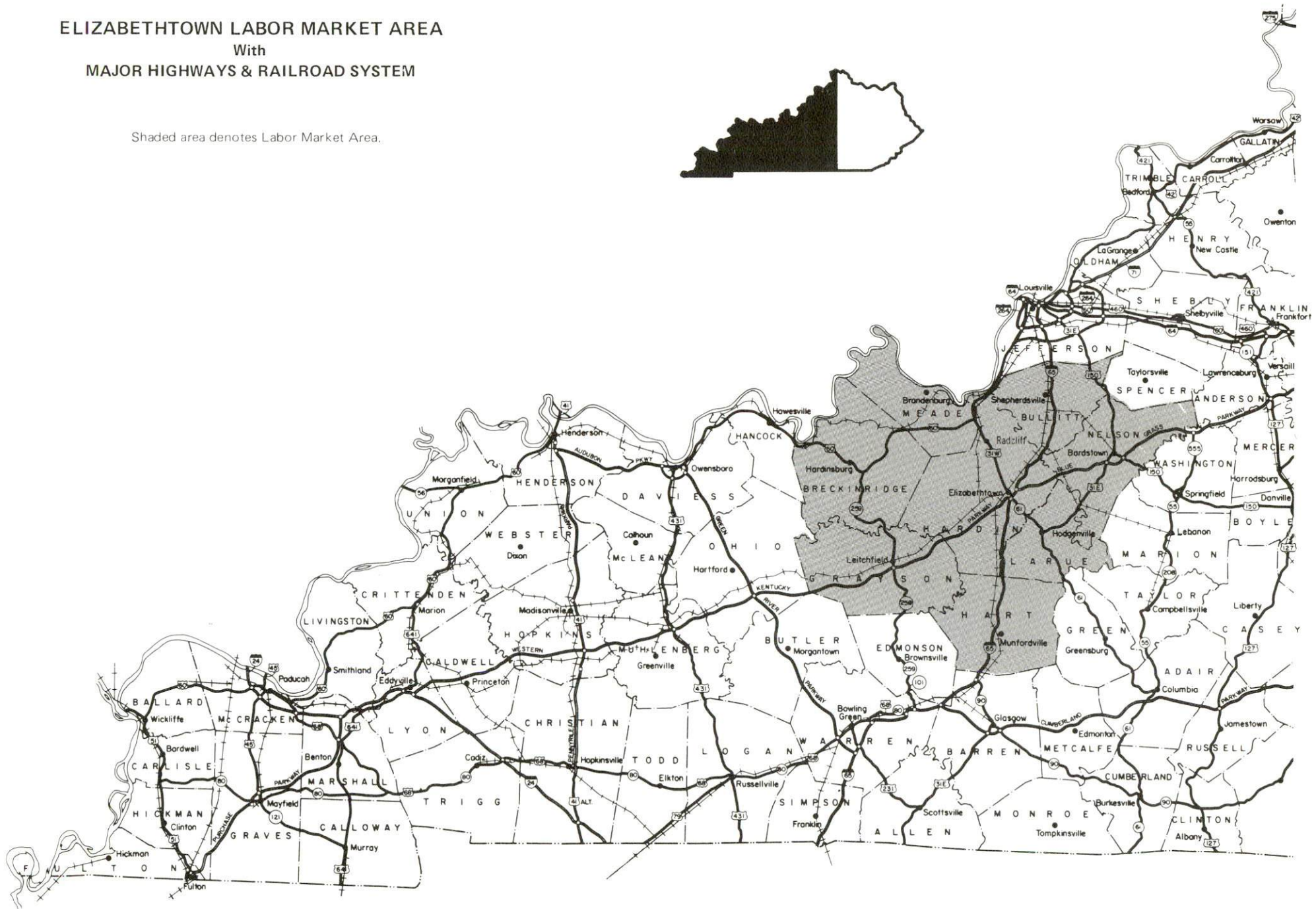
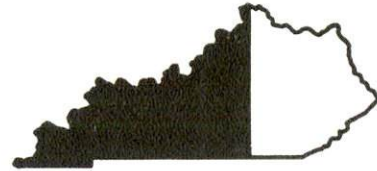
**Transportation** - CSX Transportation and the Paducah and Louisville Railway provide main line rail service to Elizabethtown. Elizabethtown is served by Interstate Highway 65, the Bluegrass Parkway, the Western Kentucky Parkway, U.S. Highways 31W and 62, and Kentucky Route 61, all of which are "AAA"-rated trucking highways. Of the 29 trucking companies which provide interstate and/or intrastate service to Elizabethtown, three maintain local terminals. The nearest scheduled commercial airline service is located at Louisville's Standiford Field, 40 miles north of Elizabethtown. Addington Field, a local airport 4 miles west of Elizabethtown, has a paved 5,000-foot runway. The nearest navigable waterway is the Ohio River, where a 9-foot navigation channel is maintained. Riverport facilities are available on the Ohio River near Louisville, 44 miles north of Elizabethtown.

**Power and Fuel** - Electric power is provided to Elizabethtown and portions of Hardin County by Kentucky Utilities Company. Hardin County is also served by the Nolin Rural Electric Cooperative Corporation and the Louisville Gas and Electric Company. Natural gas service is provided to Elizabethtown by Elizabethtown Water and Gas Department.

**Education** - The Elizabethtown Independent School System and the Hardin County School System are each accredited by the Southern Association of Colleges and Schools. Elizabethtown Community College, a unit of the University of Kentucky Community College System, had a Fall 1987 enrollment of 2,346 students. Vocational training is available locally at the Elizabethtown State Vocational-Technical School.

# ELIZABETHTOWN LABOR MARKET AREA With MAJOR HIGHWAYS & RAILROAD SYSTEM

Shaded area denotes Labor Market Area.



## LABOR MARKET STATISTICS

The Elizabethtown Labor Market Area includes Hardin County and the adjoining Kentucky counties of Breckinridge, Bullitt, Grayson, Hart, Larue, Meade and Nelson.

### POPULATION

Area	1986*	1980	1970	Percent Nonwhite
				1980
Elizabethtown	16,390	15,380	11,748	9.5
Labor Market Area	259,253	247,734	202,670	-
Hardin County	93,811	88,911	78,421	14.7
Breckinridge County	16,982	16,861	14,789	3.8
Bullitt County	46,387	43,346	26,090	0.8
Grayson County	21,601	20,854	16,445	0.6
Hart County	15,709	15,402	13,980	8.1
Larue County	12,223	11,922	10,672	4.7
Meade County	22,952	22,854	18,796	9.0
Nelson County	29,588	27,584	23,477	6.6

\* Population estimates.

Sources: U.S. Department of Commerce, Bureau of the Census. University of Louisville, Urban Studies Center, Population Unit.

### POPULATION PROJECTIONS

Area	1990	1995	2000	2010
Labor Market Area	273,983	287,826	300,640	321,971
Hardin County	100,320	105,210	109,905	118,450
Breckinridge County	17,454	17,748	17,919	18,022
Bullitt County	49,537	53,451	57,182	63,069
Grayson County	22,941	24,053	25,090	26,920
Hart County	16,011	16,677	17,266	18,195
Larue County	12,074	11,999	11,860	11,392
Meade County	24,395	25,284	26,046	27,018
Nelson County	31,251	33,404	35,372	38,905

Source: University of Louisville, Urban Studies Center, State Data Center, Newsletter Vol. 6, Nos. 3/4, March/June 1988.

# UNEMPLOYMENT RATES



**LABOR FORCE CHARACTERISTICS OF RESIDENTS, 1987**

	<u>Hardin County</u>	<u>Labor Market Area</u>
Civilian Labor Force	33,413	104,781
Employment	31,402	96,039
Unemployment	2,011	8,742
Rate of Unemployment (%)	6.0	8.3

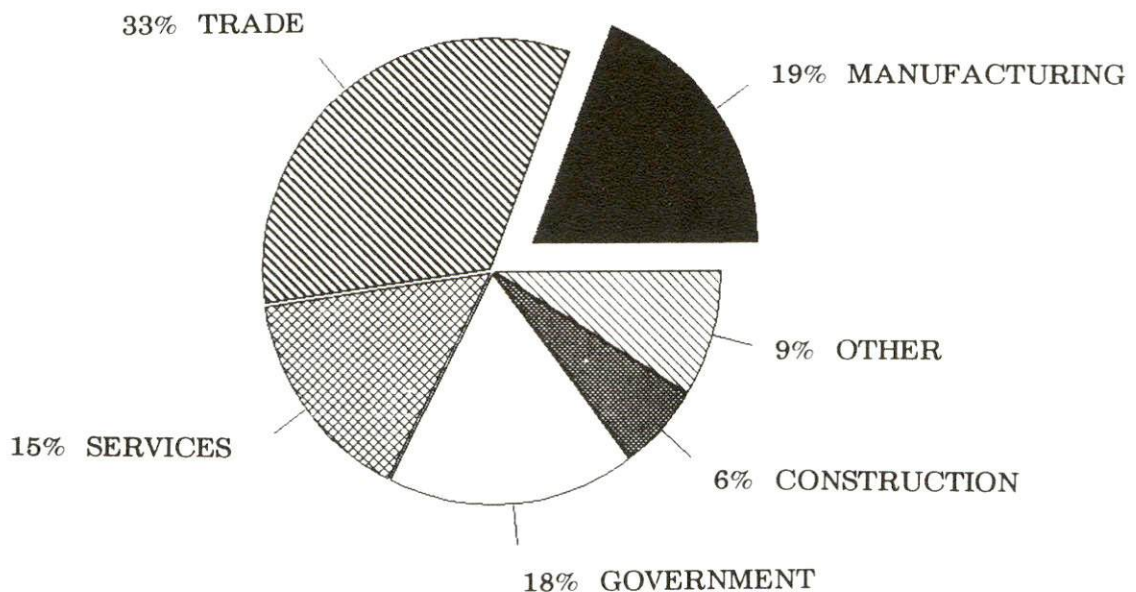
Source: Kentucky Cabinet for Human Resources, Kentucky Labor Force Estimates, Annual Averages, 1987.

**SELECTED COMPONENTS OF NONAGRICULTURAL EMPLOYMENT  
BY PLACE OF WORK, 1987**

	<u>Hardin County</u>	<u>Labor Market Area</u>
All Industries (total)	21,802	49,513
Manufacturing	4,201	12,433
Wholesale & Retail Trade	7,195	13,998
Services	3,316	6,548
State/Local Government	3,832	9,117
Contract Construction	1,300	2,782

Note: Excludes domestic workers, railway workers, certain nonprofit corporations, majority of federal government workers, and self-employed workers.  
Source: Kentucky Cabinet for Human Resources, Average Monthly Workers Covered by Kentucky Unemployment Insurance Law, 1987.

**HARDIN COUNTY**



ESTIMATED MALE LABOR SUPPLY  
ELIZABETHTOWN LABOR MARKET AREA

Area	Current				Future
	Total Male	Unemployed	Under-employed	Not in Labor Force	Becoming 18 years of age 1988 thru 1992
Labor Market Area*	13,308	4,945	7,009	1,354	10,931
Hardin	4,099	910	3,189	0	3,326
Breckinridge	932	425	507	0	721
Bullitt	1,770	861	909	0	2,501
Grayson	2,036	918	649	469	882
Hart	1,381	420	486	475	634
Larue	572	292	217	63	468
Meade	1,030	269	414	347	1,210
Nelson	1,488	850	638	0	1,189

ESTIMATED FEMALE LABOR SUPPLY  
ELIZABETHTOWN LABOR MARKET AREA

Area	Current				Future
	Total Female	Unemployed	Under-employed	Not in Labor Force	Becoming 18 years of age 1988 thru 1992
Labor Market Area*	19,668	4,528	5,668	9,472	10,444
Hardin	4,707	1,222	2,001	1,484	3,161
Breckinridge	1,603	363	350	890	660
Bullitt	3,835	733	1,071	2,031	2,406
Grayson	2,148	437	550	1,161	846
Hart	2,131	471	337	1,323	603
Larue	922	170	181	571	429
Meade	2,619	385	539	1,695	1,139
Nelson	1,703	747	639	317	1,200

\* Additional workers may be drawn from other nearby counties.

Note: Unemployed - persons unemployed and actively seeking work; Underemployed - persons employed but working only 14 to 26 weeks per year; Not in Labor Force - represents the number of persons who would enter the labor force if suitable employment were available (based on the assumption that persons in Kentucky would like to participate in the labor force in the same proportion that they do nationally).

Sources: Kentucky Cabinet for Human Resources, Kentucky Labor Supply Estimates by County, 1986. Kentucky Department of Economic Development, Future Labor Supply Becoming 18 Years of Age, 1988 thru 1992.

## AVERAGE PLACEMENT WAGES

Hardin County is served by the Elizabethtown local office of the Kentucky Department for Employment Services. The focus of the following data is on job placements made by the Elizabethtown local office and may therefore be used as an indicator of the wages which employers in the area pay new employees. During the twelve months which ended on June 30, 1988, the local employment office filled 3,256 job openings in various occupational categories. The average hourly wage for selected occupational categories were:

<u>OCCUPATIONAL CATEGORY</u>	<u>NUMBER OF PLACEMENTS</u>	<u>AVERAGE WAGE(\$)</u>
All Occupations	3,256	4.47
Clerical	960	3.90
Sales	291	3.89
Services (excluding domestic)	841	4.22
Agricultural, Fishery, Forestry, etc.	57	3.90
Processing	18	4.61
Machine Trades	164	5.46
Bench Work	146	3.92
Structural	209	5.28
Motor Freight/ Transportation	99	4.92
Packaging and Materials Handling	233	4.66
Other	4	10.27

The Elizabethtown local office also serves Breckinridge, Grayson, Larue, and Meade Counties. The above occupational categories are taken from the Dictionary of Occupational Titles published by the U.S. Department of Labor.

Source: Kentucky Cabinet for Human Resources, Department for Employment Services.

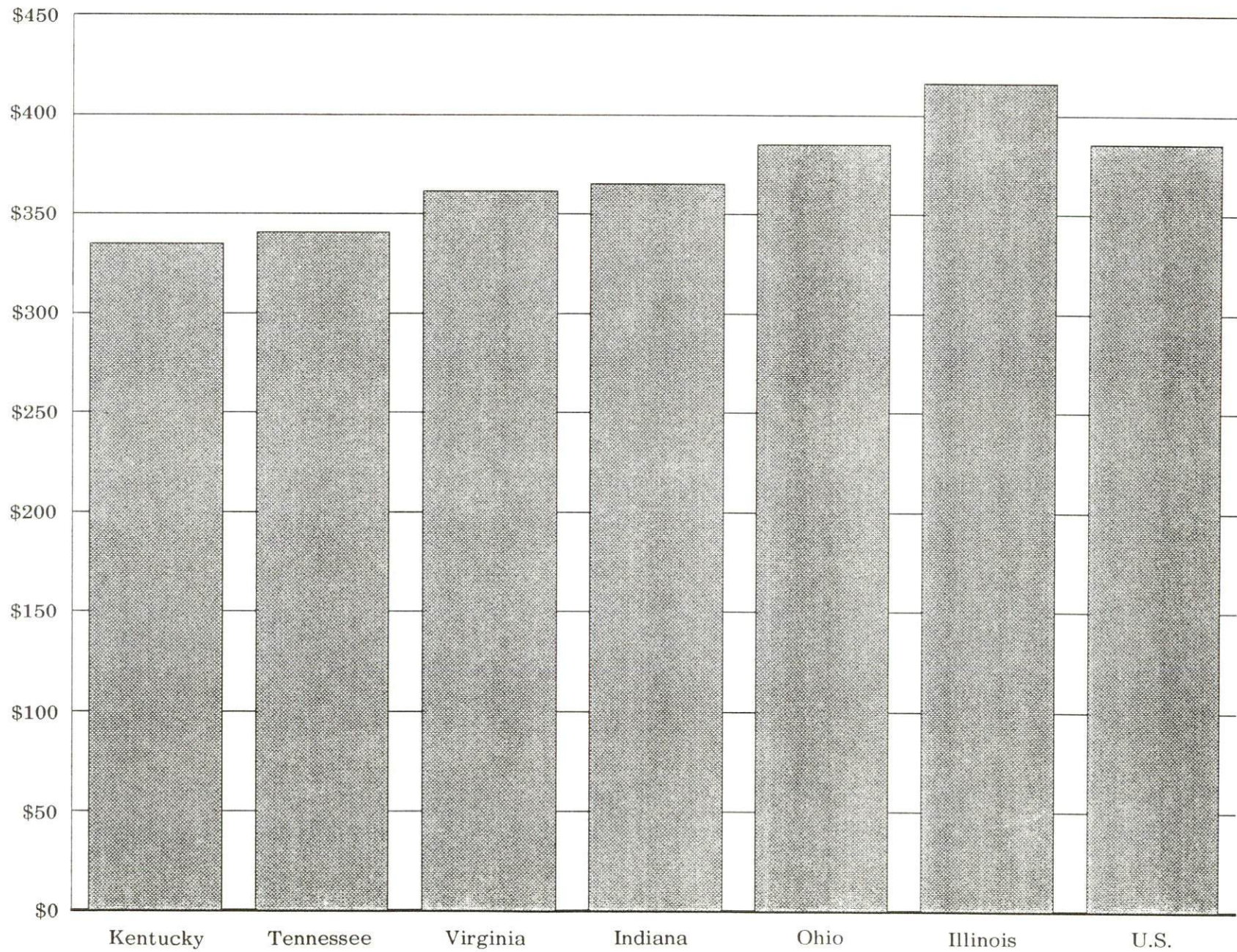
### PER CAPITA PERSONAL INCOME

<u>Area</u>	<u>1982</u>	<u>1986</u>	<u>Percent Change</u>
Hardin County	\$8,158	\$10,096	23.8
Labor Market Area Range	\$6,861 - 8,602	\$7,942 - 10,438	-
Kentucky	\$9,277	\$11,342	22.3
U.S.	\$11,480	\$14,636	27.5

Sources: Kentucky Economic Information System, April 1988.



AVERAGE WEEKLY WAGES OF WORKERS COVERED BY  
UNEMPLOYMENT INSURANCE F.Y. 1986-87



AVERAGE WEEKLY WAGES BY INDUSTRY  
BY PLACE OF WORK, 1987

	<u>Hardin</u> <u>County</u>	<u>Breckinridge</u> <u>County</u>	<u>Bullitt</u> <u>County</u>	<u>Grayson</u> <u>County</u>
All Industries	\$292.15	\$250.30	\$293.83	\$246.61
Mining & Quarrying	*	281.44	*	460.39
Contract Construction	343.83	314.47	250.34	235.32
Manufacturing	412.16	256.08	419.40	261.57
Transportation, Communications & Public Utilities	352.57	390.78	364.00	331.15
Wholesale & Retail Trade	191.36	183.40	174.83	191.05
Finance, Insurance & Real Estate	300.52	301.67	262.40	272.48
Services	278.42	203.21	202.75	181.64
State/Local Government	328.05	298.28	313.79	285.30
Other	237.29	154.14	192.41	180.97
	<u>Hart</u> <u>County</u>	<u>Larue</u> <u>County</u>	<u>Meade</u> <u>County</u>	<u>Nelson</u> <u>County</u>
All Industries	\$243.93	\$235.74	\$325.11	\$293.45
Mining & Quarrying	*	0	250.89	301.61
Contract Construction	188.08	196.51	237.27	330.45
Manufacturing	285.85	234.08	603.25	386.01
Transportation, Communications & Public Utilities	229.86	455.71	477.93	434.16
Wholesale & Retail Trade	182.90	181.09	197.18	185.34
Finance, Insurance & Real Estate	271.49	272.89	259.86	266.66
Services	206.31	194.49	169.37	183.59
State/Local Government	273.19	292.13	317.65	313.19
Other	195.18	147.70	178.20	193.72

\* Not disclosed.

Note: The average weekly wage for each category includes the salaries and wages of all persons working for that type business. For example, the manufacturing category includes both production workers and administrative personnel. Excludes domestic workers, railway workers, certain nonprofit corporations, majority of federal government workers, and self-employed workers.

Source: Kentucky Cabinet for Human Resources, Average Weekly Wages of Workers Covered by Kentucky Unemployment Insurance Law, 1987.

EXISTING INDUSTRY

MAJOR ELIZABETHTOWN MANUFACTURING FIRMS,  
THEIR PRODUCTS AND EMPLOYMENT\*

<u>Firm</u> <u>(Establishment date)</u>	<u>Product</u>	<u>1987</u> <u>Average Employment</u>	<u>Labor</u> <u>Unions</u>
Accumetric, Inc. (1970)	Primers; industrial adhesives; metering, mixing equipment	55	Chemical Workers**
Alcatel (1974)	Telephone cable	217	Electronic Workers, IUE**
Ambrake Corporation (1987)	Automotive brakes, brake components	100	
The Celotex Corporation (1971)	Hytec ISO roof insulation	53	Paper- workers**
Chromatic Color Corporation (1980)	Pigments for printing inks & paint	135	
Coca-Cola Bottling Company (1920)	Soft drinks	200	
Cole Industries (1975)	Truck toppers	45	
Collis, Inc., Elizabethtown Division (1971)	Refrigerator shelves, custom wire parts	125	Steel- workers**
Cooper Industries, Bussmann Division (1955)	Electrical & electronic fuses	256	Electronic Workers, IUE**
Crucible Materials Corporation, Crucible Magnetics Division (1965)	Ceramic, alnico, & rare earth magnets	500	Electronic Workers, IUE**

(Continued)

<u>Firm</u> <u>(Establishment date)</u>	<u>Product</u>	<u>1987</u> <u>Average Employment</u>	<u>Labor</u> <u>Unions</u>
Dow Corning Corporation (1963)	Silicone sealants	260	Chemical Workers**
EMB Corporation (1973)	Motor start relays, snap switches, special use assemblies	89	
E-Town Sportswear Corporation (1960)	Men's slacks	464	Clothing & Textile Workers**
Gates Rubber Company, Auto Belt & Hose Division (1964)	Auto V-belts, curved auto hose, urethane polyflex belts	510	Electronic Workers, IUE; Rubber Workers**
Gates Rubber Company, Industrial Belt & Hose Division (1964)	Urethane industrial belts, rubber synchronous belts	118	Electronic workers, IUE; Rubber Workers**
I W Industries, Inc. (1981)	Rebuild heavy duty industrial equipment, weldments, fabrication shop	73	
Mousers Kitchens, Inc. (1955)	Wood cabinets	83	
News Enterprise, Inc. (1969)	Newspaper, commercial printing	121	
Scotty's Contracting, Inc. (1949)	Asphalt	50	

(Continued)

<u>Firm</u> <u>(Establishment date)</u>	<u>Product</u>	<u>1987</u> <u>Average Employment</u>	<u>Labor</u> <u>Unions</u>
Trinity Industries (1968)	Guardrails & posts, steel fabrication, hot dip galvanizing	49	
Vermont American Corporation, Magna Division (1976)	Screwdriver bits & holders, sockets & nut runners	220	Aluminum Workers**
Vulcan Materials (1977)	Crushed stone, agricultural lime	50	

\* Firms with 40 or more employees.

\*\* See Labor Organizations below.

Sources: Kentucky Department of Economic Development, 1988 Kentucky Directory of Manufacturers; Division of Research and Planning; Elizabethtown-Hardin County Chamber of Commerce

#### LABOR ORGANIZATIONS IN MANUFACTURING FIRMS

<u>Union</u>	<u>Representing workers at:</u>
Aluminum, Brick and Glass Workers International Union, AFL-CIO	Vermont American Corporation, Magna Division
Amalgamated Clothing and Textile Workers Union, AFL-CIO	E-Town Sportswear Corporation
International Brotherhood of Teamsters, Chauffeurs, Warehousemen and Helpers of America	Armour Food Company
International Chemical Workers Union, AFL-CIO	Accumetric, Inc.; Dow Corning Corporation
International Union of Electronic, Electrical, Technical, Salaried and Machine Workers, AFL-CIO	Cel Wave Systems, Inc.; Crucible Materials Corporation, Crucible Magnetics Division; Cooper Industries, Bussmann Division; Gates Rubber Company, Auto Belt & Hose Division; Gates Rubber Company, Industrial Belt & Hose Division

(Continued)

<u>Union</u>	<u>Representing workers at:</u>
United Paperworkers International Union, AFL-CIO	The Celotex Corporation
United Rubber, Cork, Linoleum and Plastic Workers of America, AFL-CIO	Gates Rubber Company, Auto Belt and Hose Division; Gates Rubber Company, Industrial Belt and Hose Division
United Steelworkers of America, AFL-CIO	Collis, Inc., Elizabethtown Division

#### SELECTED INDUSTRIAL SERVICES

<u>Types of Service</u>	<u>Location</u>	<u>Mileage from Elizabethtown</u>
Custom Data Processing	Elizabethtown	-
Custom Plastics Producers	Mt. Washington	35
	Fairdale	39
	Springfield	43
	Louisville	44
Electric Motor Repair	Elizabethtown	-
Grinding, Precision & Tool	Clermont	20
	Louisville	44
Heat Treating Facilities	Louisville	44
Industrial Equipment & Supplies	Springfield	43
	Louisville	44
Industrial Gases	Elizabethtown	-
Industrial Waste Removal	Elizabethtown	-
Machine Shops, Tool & Die	Elizabethtown	-
Metal Castings	Horse Cave	38
Metal Finishers	Elizabethtown	-
Metal Service Centers	Louisville	44
Millwrights	Elizabethtown	-
Public Warehouse Facilities	Elizabethtown	-

Sources: Kentucky Department of Economic Development, Kentucky Directory of Selected Industrial Services, 1987; Division of Research and Planning.

## TRANSPORTATION

### Rail

CSX Transportation and the Paducah and Louisville Railway provide main line rail service to Elizabethtown. The nearest piggyback facilities are located in Louisville, 44 miles north of Elizabethtown.

For details on routing, schedules, rates, and services contact:

Manager  
Industrial Development  
CSX Transportation  
908 West Broadway  
P. O. Box 2157  
Louisville, Kentucky 40201  
(502) 587-7746

and/or

Vice President - Marketing and Sales  
Paducah and Louisville Railway  
1500 Kentucky Avenue  
Paducah, Kentucky 42001  
(502) 444-4341

### Highways

Major highways serving Elizabethtown are Interstate 65, the Blue Grass Parkway, the Western Kentucky Parkway, U.S. Highways 31W and 62, and Kentucky Route 61.

Interstate 65, a major north-south highway, serves Elizabethtown and connects with Interstates 64 and 71 in Louisville, 44 miles north of Elizabethtown. A major widening project has been completed on Interstate 65 at Elizabethtown. Interstate 65 is now six lanes to Louisville.

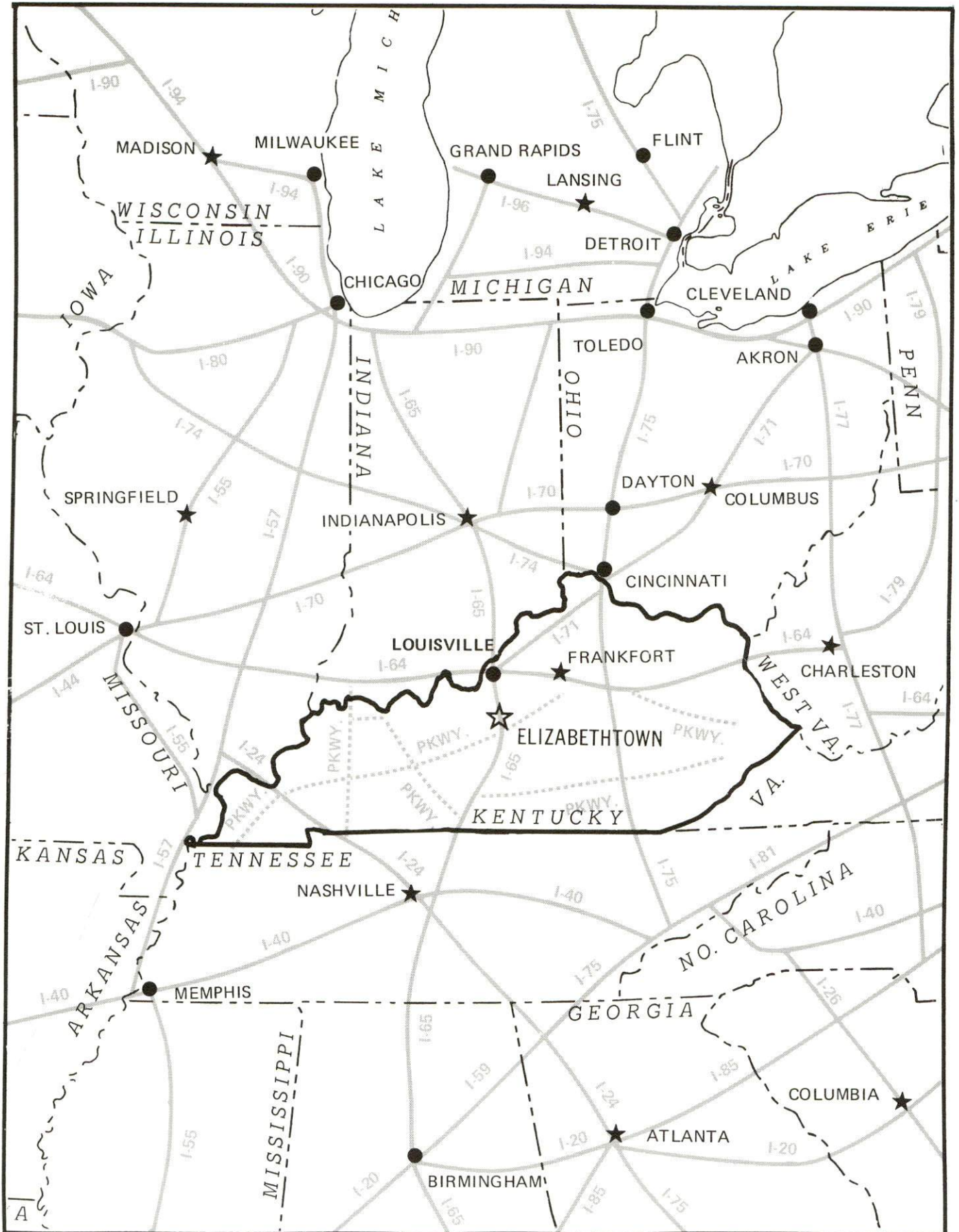
Elizabethtown is the terminus of two multilane parkways. Eastbound Blue Grass Parkway traverses central Kentucky to a point near Lexington. The Western Kentucky Parkway extends west from Elizabethtown through western Kentucky.

U.S. Highways 31W and 62 and Kentucky Route 61 are all "AAA"-rated (80,000-pound gross load limit) trucking highways. Kentucky Route 61 has been reconstructed between Elizabethtown and Hodgenville. The highway was expanded from two to four lanes.

A five-mile segment of U.S. Highway 62 West, which serves the Hughes Center of Commerce and Industry, is presently being widened to four lanes. The project will be completed in the fall of 1988.

Ring Road, a bypass connecting U.S. 62 west and U.S. 62 east, was recently completed.

# Major Highway Network





## Truck Service

ABF Freight System, Inc.*	Majors Transit, Inc.**
ANR Freight System, Inc.*	Manning Motor Express, Inc.**
Advance Transportation Company**	NW Transport Service, Inc.**
American Freight System, Inc.*	Overnite Transportation Company**
Averitt Express, Inc.**	Owenton Express, Inc.**
Bowman Transportation, Inc.*	P-I-E Nationwide, Inc.**
Buske Lines, Inc.*	Portland Express, Inc.**
Carolina Freight Carriers Corporation**	R-W Service System, Inc.**
Churchill Truck Lines, Inc.**	Roadway Express, Inc.**
Claxon Truck Lines, Inc. (T)**	Spartan Express, Inc.*
Consolidated Freightways (T)**	TNT Holland Motor Express, Inc.**
F-F-E Transportation Services, Inc.**	Transcon Lines**
Hohenwald Truck Lines, Inc. (T)**	Tyme Dedicated Truck Service, Inc.**
Jones Truck Lines, Inc.**	Yellow Freight System, Inc.**
Leitchfield Transfer Company**	

(T) Terminal.

\* Interstate service only.

\*\* Interstate and intrastate service.

Source: American Motor Carrier Directory, Fall 1988.

### HIGHWAY MILES AND TRUCK TRANSIT TIME IN DAYS FROM ELIZABETHTOWN, KENTUCKY, TO SELECTED MARKET CENTERS

City	Highway Miles	Delivery		City	Highway Miles	Delivery	
		Time TL				Time TL	
Atlanta, GA	373	2		Los Angeles, CA	2,152	5	
Baltimore MD	625	3		Louisville, KY	44	1	
Birmingham, AL	327	3		Nashville, TN	131	1	
Chicago, IL	336	2		New Orleans, LA	648	3	
Cincinnati, OH	142	1		New York, NY	787	-	
Cleveland, OH	389	1		Pittsburgh, PA	427	1	
Detroit, MI	404	2		St. Louis, MO	307	1	
Knoxville, TN	255	2					

Note: Mileage computations are via the best interstate or primary highways, not necessarily the most direct route of travel.

Sources: Rand McNally Deluxe Motor Carriers' Road Atlas, 1987. Official Kentucky Mileage Map, 1980. Delivery time - Overnite Transportation Company, P. O. Box 99308, Louisville, Kentucky 40299.

## Air

### Local

Addington Field  
Location: 4 miles west of Elizabethtown  
Runways: 1 paved  
Length: 5,000 feet  
Traffic  
Control: Unicom, wind sock  
Lighting: Runway and beacon, VASI, REILS, lighted taxiway  
Services: 100 octane, jet-A fuel, charter, major A & P repairs,  
tie-down, flight instruction, lease car, FBO,  
RTR 119.45

Air Freight  
Service: Chartered air freight service must be arranged

### Nearest Scheduled Commercial Airline Service

Standiford Field  
Location: 4 miles southeast of center of Louisville, Kentucky;  
40 miles north of Elizabethtown  
Runways: 2 paved  
Length: 10,000 feet; 7,250 feet  
Traffic  
Control: Control Tower  
Lighting: Runways, obstructions, beacon and approach; touch-  
down lights and center line on one runway  
Services: American Airlines, Delta, Eastern, Piedmont,  
Northwest, TWA, United, USAir, Jetstream,  
Allegheny Commuter, Comair, Braniff; fuel - 100  
and jet-A; major A & P repairs, major Avionics  
repairs, APU, charter, oxygen, U.S. Customs; taxi,  
car rentals, limousine, courtesy car, public  
transit; Weather Bureau, restaurant, snack bar,  
gift shop, USO, bank

Air Freight  
Service: Air freight terminal

### **Air Express Service**

Several major companies offer air express services in Kentucky. These companies provide a quick means of shipping small to medium-sized packages expeditiously.

## Water

The nearest navigable river is the Ohio River. A nine-foot navigation channel is maintained along the entire Ohio River. Elizabethtown is 44 miles south of a point on the Ohio River at Louisville where public port facilities are available. Louisville has been designated as a foreign trade zone with complete U.S. customs services.

## POWER AND FUEL

### Electricity

Company serving Elizabethtown and portions of Hardin County -  
Kentucky Utilities Company  
Source of power - Kentucky Utilities Company  
For industrial rates contact:

Industrial Development Department  
Kentucky Utilities Company  
One Quality Street  
Lexington, Kentucky 40507  
(606) 255-1461

Company serving major portions of Hardin County - Nolin Rural Electric  
Cooperative Corporation  
Source of power - East Kentucky Power Cooperative  
For industrial rates contact:

Industrial Development Division  
East Kentucky Power Cooperative  
P. O. Box 707  
Winchester, Kentucky 40391  
(606) 744-4812

Company serving the northern portion of Hardin County - Louisville  
Gas and Electric Company  
Source of power - Louisville Gas and Electric Company  
For industrial rates contact:

Louisville Gas and Electric Company  
P. O. Box 32010  
Louisville, Kentucky 40232  
(502) 566-4246 or (502) 566-4253

### Natural Gas

Company serving Elizabethtown - Elizabethtown Water and Gas Department  
Source of supply - Texas Gas Transmission Corporation  
Size of transmission mains - 26- and 30-inch (supplier); 8- and  
6-inch (distributor)  
Distribution mains - 1 through 8 inches  
Distribution pressure - 30 to 300 psi  
Btu content - 1,000 per cubic foot  
Specific gravity - 0.583  
For rates and supplies contact:

Elizabethtown Water and Gas Department  
111 West Dixie Avenue  
P. O. Box 550  
Elizabethtown, Kentucky 42701  
(502) 765-6121, Ext. 221

## WATER AND SEWERAGE

### Public Water Supply

Company serving Elizabethtown - Elizabethtown Water and Gas  
Department\*  
111 West Dixie Avenue  
P. O. Box 550  
Elizabethtown, Kentucky 42701  
(502) 765-6121

Source - Six wells (2,300 gpm total pumping capacity), two springs  
and Freeman Lake

Treatment plant capacity - 5,100,000 gallons per day (2 plants)

Average daily consumption - 3,500,000 gallons

Peak daily consumption - 5,000,000 gallons

Treatment processes - Rapid mix, flocculation, sedimentation, filtration,  
chlorination, fluoridation, activated carbon, potassium permanganate

Storage capacity - 2,915,000 gallons

Size lines - 4, 6, 8, 10, and 12 inches

Water pressure - 50 psi to 100 psi

### MONTHLY WATER RATES

First	2,000 gallons	\$5.85 (Minimum)
Next	3,000 gallons	2.01 per M gallons
Next	5,000 gallons	1.88 per M gallons
Next	5,000 gallons	1.75 per M gallons
Next	10,000 gallons	1.62 per M gallons
Over	25,000 gallons	1.43 per M gallons

#### Tap-on charges:

3/4-inch	\$150
1-inch	150
1 1/2-inch	150
2-inch	150
3-inch	300
4-inch	300
6-inch	300
8-inch	300

The above charges are in addition to the actual cost of materials  
necessary for service installations.

\* An expansion project at Plant #1 is under way. This \$1.0 million project will increase treatment capacity from 2.1 mgd to 3.3 mgd.

Name of water district - Hardin County Water District No. 2\*  
P. O. Box 66  
Elizabethtown, Kentucky 42701  
(502) 737-1056

Area served - Hardin County (except Elizabethtown, Radcliff, Vine Grove, and Upton) and parts of Larue County

Date when water district began operating - 1969

Sources of supply of treated water - Hardin County Water District No. 1 and Elizabethtown Water and Gas Department

Average amount of water used in a 24-hour period - 1,615,000 gallons

Peak amount of water used in a 24-hour period - 2,266,000 gallons

Storage capacity - 2,000,000 gallons

Size lines - 2 through 12 inches

Water pressure - 30 psi to 145 psi

#### MONTHLY WATER RATES

First	2,000 gallons	\$8.45 (Minimum)
Next	2,000 gallons	2.60 per M gallons
Next	6,000 gallons	2.10 per M gallons
Next	30,000 gallons	1.75 per M gallons
Next	60,000 gallons	1.50 per M gallons
Over	100,000 gallons	1.30 per M gallons

#### Minimum Bills:

<u>Meter size</u>	<u>Minimum gallonage</u>	<u>Minimum charge</u>
5/8- x 3/4-inch	2,000 gallons	\$ 8.45
1-inch	5,000 gallons	15.75
1 1/2-inch	10,000 gallons	26.25
2-inch	20,000 gallons	43.75
3-inch	30,000 gallons	61.25
4-inch	50,000 gallons	93.75
6-inch	100,000 gallons	168.75

#### Tap-on charges:

5/8- x 3/4-inch meter	\$ 325.00	
1-inch	410.00	
1 1/2-inch meter	800.00	
2-inch meter	1,250.00	or actual cost
3-inch meter	2,090.00	or actual cost
4-inch meter	3,575.00	or actual cost
6-inch meter	5,550.00	or actual cost

\* Hardin County Water District #2 plans to construct a new two-million-gallon-per-day water treatment plant. Construction of the \$3.5 million plant is scheduled to be completed in the spring of 1990.

## Sewerage

Company serving Elizabethtown - Elizabethtown Water and Gas  
Department\*  
111 West Dixie Avenue  
P. O. Box 550  
Elizabethtown, Kentucky 42701  
(502) 765-6121

Design capacity - 4,500,000 gallons per day

Average daily flow - 4,000,000 gallons

Type of treatment - Primary and secondary

Treatment processes - Flow equalization, screening, grit removal,  
primary sedimentation, rotating biological contactors, secondary  
sedimentation, chlorination, anaerobic digester, sludge drying  
beds, vacuum filters, land spreading of sludge

Treated effluent discharged into - Valley Creek

Size of sanitary mains - 6, 8, 10, 12, 15, 24 and 42 inches

Monthly rates - Based on water usage:

First	2,000 gallons	\$5.20 (Minimum)
Over	2,000 gallons	1.62 per M gallons

Quality treatment surcharges for industrial wastes exceeding  
specific limits:

BOD - \$0.12 per pound of BOD in excess of 250 mg/l

TSS - \$0.12 per pound of TSS in excess of 250 mg/l

COD - \$0.03 per pound of COD in excess of 1,000 mg/l

Tap-on charge: \$300

---

\* The Elizabethtown Water and Gas Department has tentative plans to expand the wastewater treatment plant. Plans are to increase the treatment capacity from 4 mgd to 6 mgd. Approximate cost of the expansion is \$2.5 million.

## CLIMATE

### Hardin County

#### Temperature

Normal (30-year record)	54.90 degrees
Average annual 1986	54.40 degrees
Record highest, August 1983 (42-year record)	103.00 degrees
Record lowest, January 1963 (42-year record)	-21.00 degrees
Normal heating degree days (30-year record) (Heating degree day totals are the sums of negative departures of average daily temperatures from 65 degrees F.)	4,814

#### Precipitation

Normal (30-year record)	45.68 inches
Mean annual snowfall (30-year record)	16.40 inches
Total precipitation 1986	34.86 inches
Mean number days precipitation (.01 inch or more) (42-year record)	130.30
Mean number days thunderstorms (42-year record)	45.60

#### Prevailing winds (through 1963)

South

#### Relative Humidity

1 a.m.	77 percent (22-year record)
7 a.m.	82 percent (23-year record)
1 p.m.	60 percent (23-year record)
7 p.m.	64 percent (23-year record)

Source: U.S. Department of Commerce, Environmental Science Services Administration, Climatological Data, 1986. Station of record: Lexington, Kentucky.

## LOCAL GOVERNMENT

### Structure

The city of Elizabethtown is served by a mayor and six council members. Hardin County is served by a county judge/executive and eight magistrates.

### Planning and Zoning

City agency - Elizabethtown Planning Commission  
Zoning enforced - Within the city of Elizabethtown  
Subdivision regulations enforced - Within the city of Elizabethtown  
Local codes enforced - Building and housing  
Mandatory state codes enforced - Kentucky Plumbing code, National Electric Code, Kentucky Boiler Regulations and Standards, Kentucky Building Code (modeled after BOCA code)

County agency - Hardin County Planning and Development Commission  
Zoning enforced - All areas of unincorporated Hardin County  
Subdivision regulations enforced - All areas of unincorporated Hardin County  
Local codes enforced - Building  
Mandatory state codes enforced - Kentucky Plumbing code, National Electric Code, Kentucky Boiler Regulations and Standards, Kentucky Building Code (modeled after BOCA code)

### Local Fees and Licenses

The city of Elizabethtown levies an occupational license fee of eight-tenths of one percent on wages, salaries, and commissions of individuals and on net profits of businesses. The minimum net profit fee for businesses is \$25.00 per year.

A 3 percent tax is levied on utilities receipts for schools in Hardin County. Tax is paid by all consumers of utilities as an add-on to the utilities bills. Exempted are receipts from utilities services that are resold and the receipts from the sale of energy or energy producing fuels that exceed 3 percent of the cost of production in manufacturing, processing, mining or refining.



## State and Local Property Taxes

All property in Kentucky, except items exempted by the state constitution, is taxed by the state. Property which also may be taxed by local jurisdictions includes land and buildings, finished goods inventories, automobiles, trucks, office furniture and office equipment. Local taxing jurisdictions in Kentucky include counties, cities, and school districts.

All property in Kentucky is assessed at 100 percent of fair cash value.

### COMBINED STATE AND LOCAL RATES PER \$100 VALUATION, 1987

	Elizabethtown/ Elizabethtown Independent School District	Elizabethtown/ Hardin County School District	Unincorporated Hardin County
Land and Buildings	\$0.9936	\$0.6866	\$0.5006
Manufacturing			
Machinery	0.150	0.150	0.150
Pollution Control			
Equipment	0.150	0.150	0.150
Inventories			
Raw materials	0.001	0.001	0.001
Goods in Process	0.001	0.001	0.001
Finished Goods	0.8406	0.4846	0.2986
Automobiles & Trucks	1.2936	0.9266	0.7376
Other Tangible			
Personal Property	1.2896	0.9336	0.7476
Intangibles (Accounts receivable*, money in hand, stock, notes, bonds)	0.250	0.250	0.250
Goods Stored in Public Warehouses in Transit Status	0.001	0.001	0.001
Private Leaseholds in Industrial Revenue Bond Financed Facilities	0.015	0.015	0.015

\* Accounts receivable are taxed at 85 percent of face value, for an effective rate of \$0.2125 per \$100 valuation.

## Safety

Police	Elizabethtown	Hardin County
Total staff	35	13
Radio-patrol cars	28	9
<b>Fire*</b>		
Insurance Services Office, Public Protection Classification	4	**
Full-time staff	31	-
Volunteers	3	262
<b>Rescue Service</b>		

Hardin County Disaster and Emergency Service provides rescue service to all areas of Hardin County.

## Refuse Collection and Disposal

Private contractors provide refuse collection and disposal in the city of Elizabethtown. A private company has been franchised to provide service to unincorporated Hardin County.

\* Includes copyrighted material of ISO Commercial Risk Services, Inc., with its permission.

\*\* Ten fire protection districts serve Hardin County. Property located within five road miles of a responding fire station ranges from class 7 to class 9. Property located in unincorporated Hardin County, more than five road miles from a fire station, has a class 10 rating.

## EDUCATION

### Public Schools

	Elizabethtown Independent*	Hardin County**
Total Enrollment (May 1988)	1,967	11,837
Kindergarten	119	922
Elementary	812	4,716
Junior High	320	-
Middle School	-	2,674
High School	716	3,409
Special Education	-	116
Accreditation	Southern Association of Colleges and Schools	Southern Association of Colleges and Schools
Pupil-Teacher Ratio (1986-87)	19-1	21-1
Percent High School Graduates to College (1986-87)	73.9	64.2
Expenditures Per Pupil (1986-87)	\$2,349.00	\$2,122.00

### Nonpublic Schools

<u>School</u>	<u>Enrollment</u>	<u>Grades</u>
St. James Elementary	165	K-6
Elizabethtown Montessori Child Center	65	K-3

(Nonpublic schools are also located in Radcliff, Vine Grove, and Fort Knox.)

\* The Elizabethtown Independent School System recently completed construction of a library-classroom addition at Helmwood Elementary. Cost of the addition was \$325,000. Public restroom facilities were also recently constructed at the Elizabethtown High School football stadium.

\*\* The Hardin County School System is presently converting Hardin Central Middle School to a new high school. A new middle school is also under construction. Both facilities are scheduled to be completed in the fall of 1990 at a cost of \$9.1 million.

## Area Colleges and Universities

<u>Name</u>	<u>Location (Miles distant)</u>	<u>Enrollment (Fall, 1987)</u>	<u>Highest Degree Conferred</u>
Elizabethtown Community College	Elizabethtown	2,346	Associate
Campbellsville College	Campbellsville (42)	660	Baccalaureate
Saint Catharine College	Springfield (43)	265	Associate
Bellarmino College	Louisville (44)	3,624	Masters
Jefferson Community College	Louisville (44)	7,750	Associate
Spalding University	Louisville (44)	1,177	Doctorate
University of Louisville	Louisville (44)	21,087	Doctorate, M.D., D.M.D., J.D.

### Elizabethtown Community College

Elizabethtown Community College is a member of the University of Kentucky's Community College System and is accredited by the Southern Association of Colleges and Schools. The College offers an Associate in Applied Science degree in the following fields: Nursing, Office Administration, Data Processing Technology, and Business Technology with options in Management, Banking Management, and Real Estate Management. In addition, the college offers the first two years of study toward baccalaureate degrees in most programs offered by four-year colleges and universities. An Associate in Arts or an Associate in Science degree may be awarded in the pre-baccalaureate program.

### Fort Knox Extension Campuses

Ten institutions of higher education operate extension campuses at Fort Knox Military Reservation, 15 miles north of Elizabethtown. These extension campuses confer various graduate and undergraduate degrees, including doctorate degrees in policy analysis and education. The extension campuses' programs are open to the public. The extension campuses include: Central Texas College, Eastern Kentucky University, Embry Riddle Aeronautical University, Sullivan Junior College of Business, University of Kentucky, University of Louisville, University of Southern California, Western Kentucky University, Elizabethtown Community College, and McKendree College.

## Vocational Training

The Bluegrass State Skills Corporation, an independent public corporation created and funded by the Kentucky General Assembly, provides programs of skills training to meet the needs of business and industry from entry level to advanced training, and from upgrading present employees to retraining experienced workers.

The Bluegrass State Skills Corporation is the primary source for skills training assistance for a new or existing company. The Corporation works in partnership with other employment and job training resources and programs, as well as Kentucky's economic development activities, to package a program customized to meet the specific needs of a company.

Vocational training is available at both the state vocational-technical schools and the area vocational education centers. The state vocational-technical schools are post-secondary institutions. The area vocational education centers are designed to supplement the curriculum of high school students. Both the state vocational-technical schools and the area vocational education centers offer evening courses to enable working adults to upgrade current job skills.

Arrangements can be made to provide training in the specific production skills required by an industrial plant. Instruction may be conducted either in the vocational school or in the industrial plant, depending upon the desired arrangement and the availability of special equipment.

### Nearest State School

Elizabethtown State Vocational-Technical School  
Elizabethtown

Agriculture	Electricity
Agricultural Mechanics	Electronics
Business & Office	Industrial Machine Maintenance
Accounting/Management	Machine Shop
Clerical	Plumbing
Secretarial	Radio & TV Repair
Word Processing	Welding
Consumer & Home Economics	Public Service Occupations
Commercial Foods	Business/Industry Security
Consumer & Family Life	Training
Skills	CPR Training
Industrial Education	Electrical Safety Training
Air Conditioning	Emergency Medical Care
Appliance Repair	Fire Service Training
Auto Mechanics	First Aid & Safety
Carpentry	Rescue & Emergency Services
Diesel Mechanics	Training
Drafting (with CAD/CAM)	

## HEALTH

### Local Medical Personnel

Physicians - 71

Dentists - 18

### Hospitals

<u>General Hospital</u>	<u>Location</u>	<u>Beds</u>
Hardin Memorial Hospital*	Elizabethtown	300

Medical staff - 107 physicians, 318 registered nurses, 22 licensed practical nurses

### Other Medical Facilities

Communicare, Inc.

Heartland Recovery Center (drug and alcohol abuse recovery and rehabilitation)

Lakeview Rehabilitation Center

Hardin County Health Center/Lincoln Trail District Health Department

Regional Renal Dialysis Facility

Speech and Hearing Clinic

Surgical Center of Elizabethtown

### Ambulance Service

Name - Hardin County Ambulance Service

Staff - 19 full-time and 6 part-time emergency medical technicians

\* Recent additions at Hardin Memorial Hospital include a cardiac rehabilitation center, mobile diagnostic van, MRI, and outpatient surgery.

## OTHER LOCAL FACILITIES

### Communications

Telephone - Telegraph -	General Telephone Company Western Union Toll-Free number, 1-800-325-6000
Newspapers - Daily (except Saturday) and circulation - Weekly and circulation -	The News-Enterprise - 16,326 Hardin County Independent - 7,000
Radio -	WIEL-AM, WKMO-FM, WQXE-FM, WASE-FM
Television - Airwave reception from -	Louisville, Lexington, and Bowling Green, Kentucky Telescripps
Cable service - Educational Television -	The Kentucky Educational Television (K.E.T.) network is available statewide

### Library Services

Public library - Hardin County Public Library (Lincoln Trail System) Size collection - 73,968 volumes Circulation, 1986-87 - 163,680	
College library - Elizabethtown Community College Media Center Size collection - 30,586 volumes Special collections - Kentucky collection	
Private library - Brown-Pusey House Library Special collection - Historical, genealogy materials	

## Religious Institutions

Denominations -	African Methodist Episcopal Apostolic Assembly of God Baptist Christian Church of Christ Church of God Church of God of Prophecy Church of Jesus Christ of Latter Day Saints	Episcopal Interdenominational Jehovah's Witnesses Lutheran Methodist Nazarene Pentecostal Presbyterian Roman Catholic Seventh Day Adventist
Nearest Synagogues - Congregations -	Louisville, 44 miles north Adath Isreal Brith Sholom (reform) Adath Jeshurum (conservative) Anshei Sfard (orthodox) Keneseth Isreal (orthodox) Sholom (reform)	

## Financial Institutions

<u>Banks</u>	<u>Assets</u>	<u>Deposits</u>	<u>Statement Date</u>
<b>Hardin County</b>			
The Cecilian Bank	\$ 58,224,066.99	\$ 48,598,506.31	12/31/87
Citizens Fidelity Bank of Hardin County	231,559,000.00	168,167,000.00	6/30/88
Farmers Bank	16,872,458.85	14,762,949.56	6/30/88
First Citizens Bank	92,983,469.00	82,184,336.00	6/30/88
Fort Knox National Bank	66,052,000.00	58,968,000.00	12/31/87
Hardin County Bank	43,603,814.00	38,809,196.00	12/31/87
Liberty National Bank of Hardin County	28,568,091.00	23,504,611.00	12/31/87
<b>Savings and Loan Associations</b>			
<u>Associations</u>	<u>Assets</u>	<u>Deposits</u>	<u>Statement Date</u>
First Federal Savings Bank	\$178,416,081.00	\$147,310,508.00	3/31/88
Republic Savings Bank	348,705,373.41	175,897,907.39	12/31/87

## Hotels and Motels

Total number - 15  
Total rooms - 1,035



## RECREATION

### Local

Three public parks provide Elizabethtown with a variety of outdoor activities. Freeman Lake Park offers a 120-acre lake for fishing and boating, plus 80 acres with picnic areas, grills, playground equipment, hiking trails, and five shelter houses. University Park, with eight acres, has ten lighted tennis courts, two soccer fields, and facilities for volleyball, baseball, handball, softball, and picnicking. The 32-acre American Legion Park features a picnic area, four tennis courts, a soccer field, softball fields, two outdoor swimming pools and a kiddie pool, and a par-3 golf course. Three mini parks offer picnic areas and playground equipment. Greenbelt, an area for hiking, bicycling, and nature walking, extends approximately 16 miles. Gates Field, approximately 21 acres, has four soccer fields and one softball field, all for youth teams.

The Elizabethtown Parks and Recreation Department offers supervised programs including youth baseball leagues, spring and fall soccer leagues, a swim team, an adult co-ed volleyball league, adult full- and half-court basketball leagues, and a women's tennis league. Golf and tennis lessons also are taught by the Recreation Department.

The Recreation Department also is in charge of Elizabethtown Summer Youth Day Camp Program for children ages six through 13. An average of 900 children attend the six-week day camp program annually. Activities include fishing, boating, hiking, swimming, sports, and visits to educational and recreational attractions in the area.

Elizabethtown has a new, fully-equipped softball park, with three lighted fields. Facilities include restrooms, a concession stand, lighted parking, and home and visitors' dugouts. Summer and fall leagues are available for men's and women's teams, as well as co-ed church leagues.

The J. R. Pritchard Community Center features a multi-use area with a seating capacity of 855 and banquet arrangements for 400 people, two meeting rooms with seating capacities of 100 each, a kitchen, a snack area, stage facilities, bathroom and shower facilities, two full-size basketball courts, handball and racquetball courts, an indoor tennis court, a weight room, and equipment for ping-pong, badminton, volleyball, and gymnastics.

Both the Severns Valley Baptist Church and the Memorial Methodist Church offer athletic facilities.

Local schools have facilities for track, football, and indoor swimming. Other recreational facilities include a private country club with a swimming pool and an 18-hole golf course; a public 9-hole, par-3 golf course; a semi-private golf club offering a 9-hole course, swimming pool, tennis courts, hiking trails and picnic tables. Bowling facilities and indoor movie theaters are available also.

E-Town Swim and Fitness is a locally-owned and operated health/recreation/entertainment facility. Facilities include a 50-meter pool, a 25-yard pool, a baby pool, 8 tennis courts, a 3,000-square-foot weight room, a 2,000-square-foot aerobics studio, 2 racquetball courts, a co-ed spa, men's and women's locker rooms and saunas, tanning beds, masseuse, restaurant/lounge, and hair salon. Additionally, a variety of programs, tournaments, and exhibitions are regularly scheduled.

Historical sites in Elizabethtown include the Lincoln Heritage House, built by Thomas Lincoln before his son's birth; the Governor Helm Mansion, an antebellum estate; and the Brown-Pusey House, the first inn and presently a community center. Other attractions in or near Elizabethtown include General Custer Headquarters, the Patton Museum and the U.S. Gold Depository at nearby Fort Knox, and the Coca-Cola Bottling Company which displays art work, sculpture, Japanese landscaping, and a pool containing live, imported brilliantly colored carp.

#### Area (Within 55 miles)

Abraham Lincoln Birthplace National Historic Site, located 15 miles southeast of Elizabethtown near Hodgenville, features the log cabin which was the birthplace of Abraham Lincoln, enclosed within a granite memorial shrine. The grounds include 116 acres of the original Thomas Lincoln farm and a visitors' center with audiovisual programs and exhibits on the Lincoln family.

Bernheim Forest Arboretum and Nature Center, located 22 miles northeast of Elizabethtown, is a privately endowed 10,000-acre forest and wildlife refuge. The area contains over 1,200 labeled varieties of plants, trees and shrubs; ornamental gardens; a nature center; nature trails and waterfowl ponds.

My Old Kentucky Home State Park, 26 miles east of Elizabethtown in Bardstown, portrays an image of the South's gentle and leisurely home life before the Civil War. The restored Georgian Colonial mansion is where composer Stephen Foster visited and where he was inspired to write "My Old Kentucky Home." A world-renown outdoor drama, "The Stephen Foster Story", is presented in the park's amphitheatre during the summer months. The park also offers a 40-site campground, a gift shop, a 9-hole golf course and pro shop, a picnic area, and planned recreation.

Louisville, 44 miles north of Elizabethtown, provides a wide variety of recreational opportunities. The most noted recreational event in Louisville is the Kentucky Derby at Churchill Downs. The "Run for the Roses" is the oldest continuously held horse race in the United States. Other attractions include: Kentucky Center for the Arts, Macauley Theatre, Actors Theatre of Louisville, Louisville Children's Theatre, the Louisville Bach Society, the Louisville Orchestra, the Louisville Ballet, the Kentucky Opera Association, several museums, the Louisville Zoological Gardens, University of Louisville sporting events, rock concerts, and the "Belle of Louisville" sternwheeler.

**Mammoth Cave National Park** is located 44 miles southwest of Elizabethtown near Cave City. Beneath 52,000 park acres, Mammoth Cave is among the major tourist attractions of all times. It is the largest cave network ever discovered, with over 300 miles of caverns. Some famous sights are Snowball Dining Room (267 feet below surface), Frozen Niagara, Crystal Lake, and Bottomless Pit. The park also features scenic boat trips on the Green River and nature and hiking trails. Park accommodations include a hotel with distinctive gift shops featuring native Kentucky and Southern Highland handicrafts, a motor lodge, hotel cottages, and woodland cottages. Other park facilities include the hotel dining room and coffee shop, a service center, group meeting facilities, a campground, boat rides, a picnic area, and tennis and shuffleboard courts. The park is open for tours every day of the year (except Christmas Day).

**Nolin River Lake** is just north of Mammoth Cave National Park. The lake has a surface area of 5,800 acres and offers facilities for camping, boating, and fishing.

**Green River Lake State Park** near Campbellsville, 45 miles southeast of Elizabethtown, is made up of 1,300 acres surrounding an 8,200-acre lake. The park is open all year-round and offers 156 campsites, a service building, playground, planned recreation, beaches, boat docks, fishing, and a picnic area.

**Lincoln Homestead State Park**, 48 miles east of Elizabethtown near Springfield, is a 153-acre park on land settled by Abraham Lincoln's family. The actual building in which Nancy Hanks, mother of President Lincoln, lived during her courtship with Thomas Lincoln is preserved here as well as a replica of the 1782 cabin where Thomas Lincoln lived as a boy. The park also maintains a museum, a gift shop, a picnic area, and an 18-hole golf course.

**E. P. "Tom" Sawyer State Park**, 50 miles northeast of Elizabethtown, is located near Louisville. Recreational facilities include an outdoor Olympic-size pool, a bathhouse, 12 lighted tennis courts, bicycle moto-cross track (BMX), softball fields, a one-mile fitness trail, a picnic area, an archery range, and soccer fields. Planned recreation and playground are offered year-round. Indoor facilities are available for basketball, volleyball, exercise classes, dance classes and various other events.

Noteworthy for its spaciousness, **Rough River Dam State Resort Park** at Falls of Rough is 50 miles west of Elizabethtown. The 637-acre park on Rough River Lake features a 40-room lodge with a dining room, a coffee shop, a gift shop, a meeting room, and a 2,500-foot lighted airstrip. Cottages and camping sites are also available. Recreational facilities include a launching ramp, a dock with open and covered slips, fishing and pleasure boat rentals, a 9-hole, 3-par golf course, a swimming pool, a sand beach with a bathhouse complex, tennis courts, an archery range, hiking and fitness trails, picnic and playground areas, and planned recreation. Cruise boat excursions on Rough River Lake are available on the "Lady of the Lake" in season.

**Taylorville Lake State Park**, 52 miles northeast of Elizabethtown near Taylorville, was developed by the U.S. Army Corps of Engineers. The 3,050-acre lake and 10,700-acre recreation area features full-service marina facilities, fishing, boating, swimming, and wildlife recreation.

## COMMUNITY IMPROVEMENTS

### Recent

Elizabethtown was chosen as a "Kentucky Certified City" in 1987, marking its seventh consecutive year of certification. The award is based on achievement in the following categories: economic development, transportation, public affairs, utilities, health, commercial development, housing, education and recreation. The Certified Cities Program is sponsored by the Kentucky Chamber of Commerce.

GTE South Telephone Company recently announced plans to move a division of the company's operator services to Elizabethtown. The move will provide approximately 150 jobs and be complete by the fall of 1989. GTE also announced plans to consolidate its Western Kentucky and Tennessee divisions. These offices will also now be housed in Elizabethtown.

Cytech, Inc., and AP Technoglass recently announced plans to construct manufacturing facilities in Elizabethtown. Cytech will manufacture a chemical coating and chemical release agent for the auto industry. Production is scheduled to begin in the fall of 1988 and employ approximately 12 persons initially. AP Technoglass will begin production of automotive safety glass in the spring of 1989 and employ 175 persons initially, with plans to employ approximately 500 persons within two years.

Lakeview Rehabilitation Hospital recently began operations in Elizabethtown. The \$3.5 million, 40-bed facility, provides a comprehensive treatment program to patients in a ten-county area who have experienced disabling injuries or illness.

Recent additions at Hardin Memorial Hospital include a cardiac rehabilitation center, mobile diagnostic van, MRI, and outpatient surgery.

Hardin County Government recently purchased and renovated a downtown building for use as county offices. The courthouse is being renovated for use by the state court system.

Elizabethtown Community College recently completed construction of a new 55,000-square-foot academic technical building. The new facility houses the nursing program, office administration program, data processing, and student services.

The Elizabethtown Independent School System recently completed construction of a library-classroom addition at Helmwood Elementary. Cost of the addition was \$325,000. Public restroom facilities were also recently constructed at the Elizabethtown High School football stadium.

## Under Way

Gates Rubber Company is currently moving a portion of its operation from Denver, Colorado, to Elizabethtown. The move is scheduled to be complete within two years and will add approximately 100 jobs to the Elizabethtown operation.

A five-mile segment of U.S. Highway 62 West, which serves the Hughes Center of Commerce and Industry, is presently being widened to four lanes. The project will be completed in the fall of 1988.

The Hardin County School System is presently converting Hardin Central Middle School to a new high school. A new middle school is also under construction. Both facilities are scheduled to be completed in the fall of 1990 at a cost of \$9.1 million.

The Elizabethtown Water and Gas Department is presently installing eight- and twelve-inch fresh water distribution lines and twelve- and eighteen-inch wastewater collection lines to the industrial park. This \$600,000 project will be completed in the fall of 1988. An expansion project at the Fresh Water Treatment Plant #1 is also under way. This \$1 million project will increase capacity from 2.1 mgd to 3.3 mgd.

## Planned

Hardin County Water District #2 plans to construct a new two-million-gallon-per-day water treatment plant. Construction of the \$3.5 million plant is scheduled to be completed in the spring of 1990.

The Hardin County School System plans to construct a new high school. Estimated cost of the new facility is approximately \$5.7 million and scheduled for completion in the fall of 1992. A \$2.5 million renovation project is also planned for Lincoln Trail Elementary.

The Elizabethtown Water and Gas Department has tentative plans to expand the wastewater treatment plant. Plans are to increase the treatment capacity from 4 mgd to 6 mgd. Approximate cost of the expansion is \$2.5 million.



**Cabinet for Economic Development  
Department of Business Development  
Capital Plaza Tower  
Frankfort, Kentucky 40601  
(502) 564-7140**