

1993

## Industrial Resources: Hardin County - Radcliff

Kentucky Library Research Collections  
Western Kentucky University, [spcol@wku.edu](mailto:spcol@wku.edu)

Follow this and additional works at: [https://digitalcommons.wku.edu/hardin\\_cty](https://digitalcommons.wku.edu/hardin_cty)

 Part of the [Business Administration, Management, and Operations Commons](#), [Growth and Development Commons](#), and the [Infrastructure Commons](#)

---

### Recommended Citation

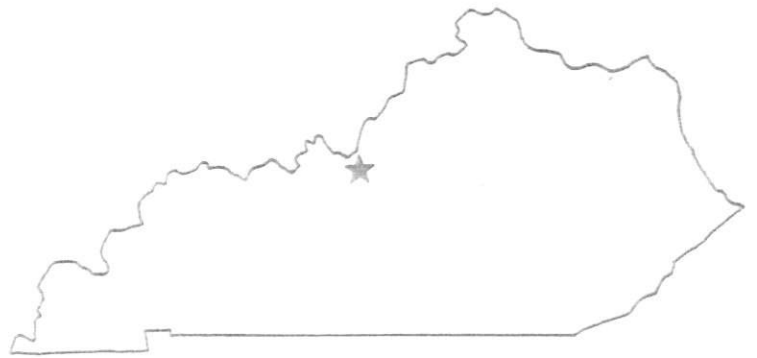
Kentucky Library Research Collections, "Industrial Resources: Hardin County - Radcliff" (1993). *Hardin County*. Paper 22.  
[https://digitalcommons.wku.edu/hardin\\_cty/22](https://digitalcommons.wku.edu/hardin_cty/22)

This Report is brought to you for free and open access by TopSCHOLAR®. It has been accepted for inclusion in Hardin County by an authorized administrator of TopSCHOLAR®. For more information, please contact [topscholar@wku.edu](mailto:topscholar@wku.edu).

JK  
195 Hardin

# *Resources for Economic Development*

## Radcliff



**KENTUCKY**

---

RESOURCES FOR ECONOMIC DEVELOPMENT

RADCLIFF, KENTUCKY

Prepared by  
The Kentucky Cabinet for Economic Development  
Division of Research  
in cooperation with  
City of Radcliff

1993

Division Director - Pamela K. Riley; program manager - Keith Roberts; research - Richard H. Cobb; clerical - Wanda Sharp; graphics - Robert Owens, Pat Coleman; cartography - Edwin Scott, Dave Clark. Cost of printing paid from state funds.

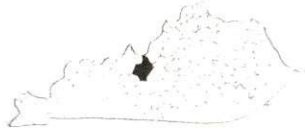
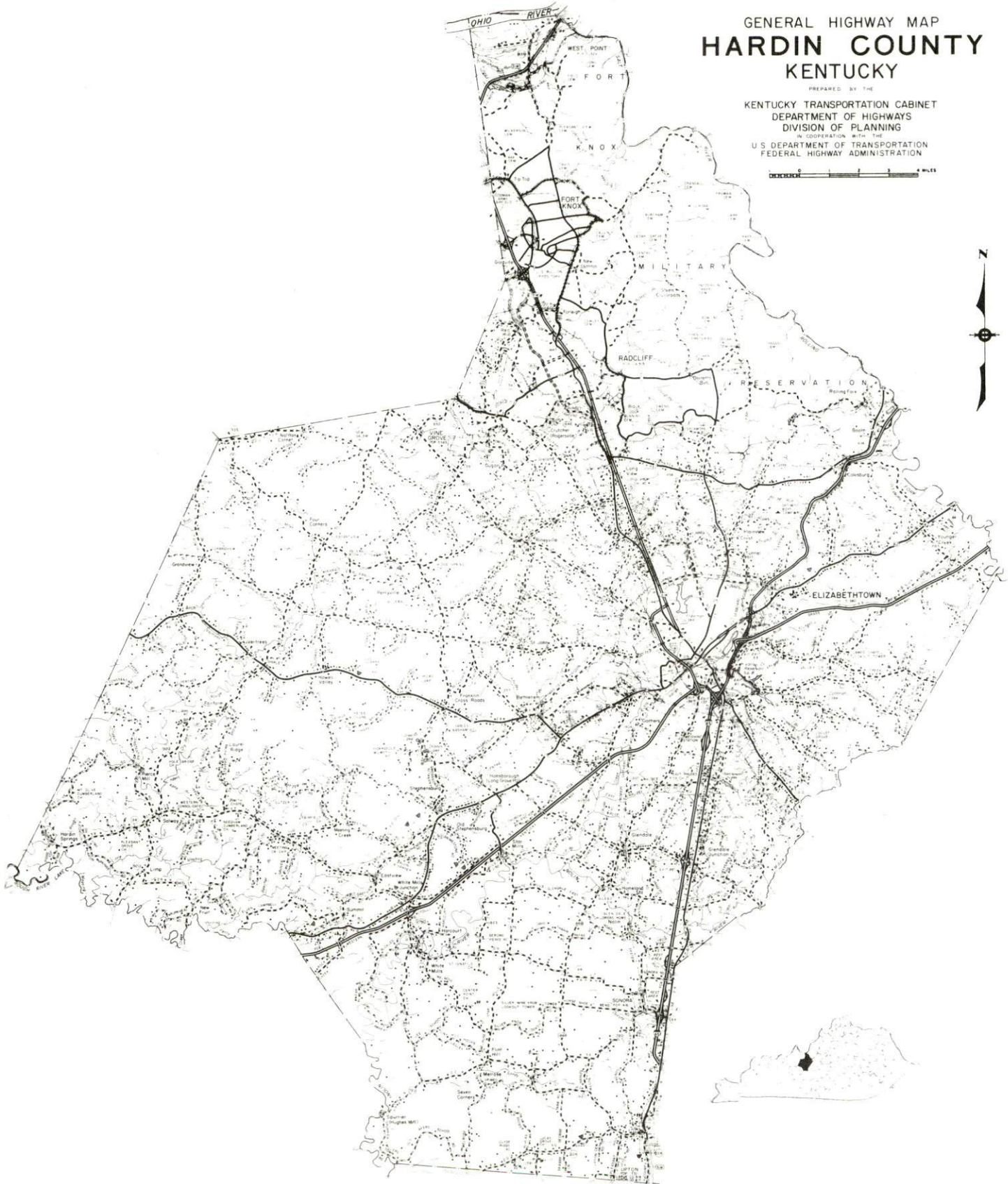
## TABLE OF CONTENTS

<u>Chapter</u>	<u>Page</u>
RADCLIFF, KENTUCKY - A RESOURCE PROFILE .....	1
THE LABOR MARKET STATISTICS .....	2
Labor Market Area Map .....	2
Population .....	3
Population Projections .....	3
Estimated Labor Supply .....	3
Labor Force Characteristics of Residents, 1992 .....	4
Selected Components of Nonagricultural Employment, by Place of Work, 1991 .....	5
Per Capita Personal Income .....	6
Average Placement Wages .....	7
Average Weekly Wages of Workers Covered by Unemployment Insurance 1991 - Bar Chart .....	8
Average Weekly Wages by Industry, by Place of Work, 1991 .....	9
EXISTING INDUSTRY .....	10
Radcliff Manufacturing Firms, Their Products and Employment .....	10
Labor Organizations in Manufacturing Firms .....	10
Selected Industrial Services .....	11
TRANSPORTATION .....	12
Highways .....	12
Truck Service .....	12
Selected Market Location Map .....	13
Rail .....	14
Air .....	14
UTILITIES .....	15
Electricity .....	15
Natural Gas .....	15
Public Water Supply .....	16
Sewerage .....	16
CLIMATE .....	17

<u>Chapter</u>	<u>Page</u>
LOCAL GOVERNMENT .....	18
Structure.....	18
Planning and Zoning .....	18
Local Fees and Licenses.....	18
State and Local Property Taxes .....	19
EDUCATION.....	20
Public Schools .....	20
Area Colleges and Universities .....	20
Vocational Training .....	21
OTHER LOCAL FACILITIES .....	23
Local Medical Personnel.....	23
Hospitals .....	23
Other Medical Facilities and Services .....	23
Banks and Savings & Loan Associations .....	23
Newspapers.....	23
Telephone Service .....	23
RECREATION.....	24
COMMUNITY IMPROVEMENTS.....	26

# GENERAL HIGHWAY MAP HARDIN COUNTY KENTUCKY

PREPARED BY THE  
KENTUCKY TRANSPORTATION CABINET  
DEPARTMENT OF HIGHWAYS  
DIVISION OF PLANNING  
IN COOPERATION WITH THE  
U.S. DEPARTMENT OF TRANSPORTATION  
FEDERAL HIGHWAY ADMINISTRATION



## RADCLIFF, KENTUCKY - A RESOURCE PROFILE

Radcliff, situated in northern Hardin County, had a 1990 population of 19,772 persons. Radcliff is adjacent to the Fort Knox Military Reservation. U.S. Highway 31W, a major traffic artery through Radcliff, provides direct, four-lane access to Louisville, Kentucky, only 35 miles northeast of the city. Radcliff is located 136 miles southwest of Cincinnati, Ohio; and 141 miles northeast of Nashville, Tennessee.

Hardin County, located in north central Kentucky's Mississippian Plateaus Region, covers a land area of 628 square miles. The topography of the county ranges from a low, rolling plateau in the central section where Radcliff is located, to steeper hills and ridges along the eastern border of the county. Hardin County's 1990 population was 89,240 persons.

**The Economic Framework** - The total number of Hardin County residents employed in 1992 averaged 33,742. In 1991, manufacturing firms in the county reported 4,974 employees; wholesale and retail trade provided 8,047 jobs; 4,440 people were employed in service occupations; state and local government accounted for 4,391 employees; and contract construction firms provided 1,123 jobs.

**Labor Supply** - There is a current estimated labor supply of 19,898 persons available for industrial jobs in the labor market area. In addition, from 1993 through 1997, 20,123 young persons in the area will become 18 years of age and potentially available for industrial jobs.

**Transportation** - U.S. Highway 31W, a "AAA"-rated trucking highway, provides Radcliff with four-lane access to Interstate 65, the Blue Grass Parkway, and the Western Kentucky Parkway at Elizabethtown, 14 miles south of Radcliff. U.S. 31W also provides four-lane access to the Louisville area, 32 miles northeast of Radcliff, where Interstate 64, Interstate 65, Interstate 71 and several major U.S. and Kentucky highways intersect. Twenty-nine trucking companies provide intrastate and/or interstate service to Radcliff. Paducah and Louisville Railway provides rail freight service to Radcliff. The nearest scheduled commercial airline service is available at Louisville's Standiford Field, 31 miles northeast of Radcliff. Addington Field, 15 miles south of Radcliff, maintains a 5,000-foot paved runway. Riverport facilities are available on the Ohio River at Louisville, 35 miles northeast of Radcliff.

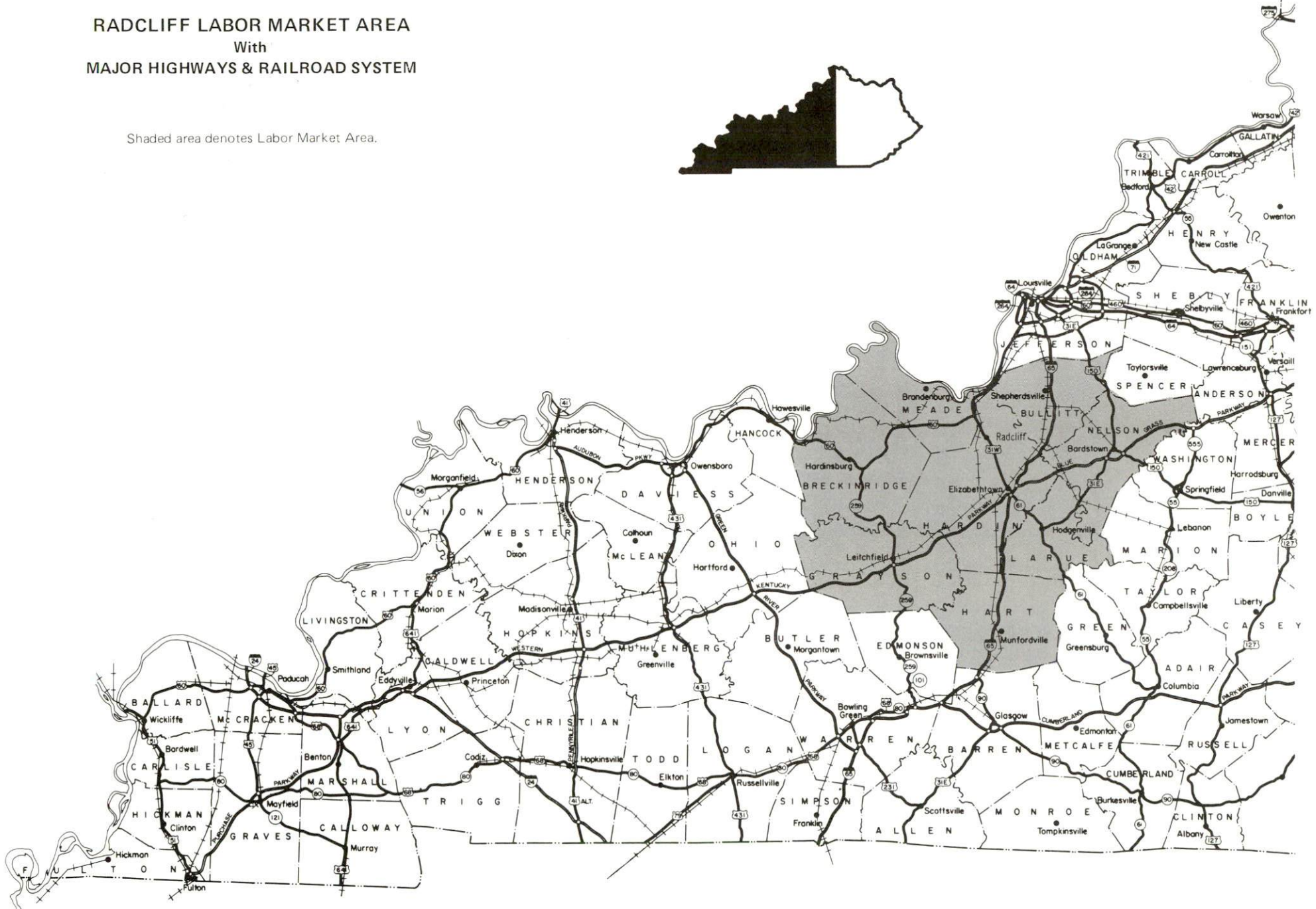
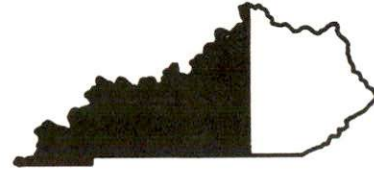
**Power and Fuel** - Kentucky Utilities Company and Nolin Rural Electric Cooperative Corporation each serve portions of Radcliff and Hardin County with electric power. Louisville Gas and Electric Company provides electric power to a portion of northern Hardin County and natural gas service to Radcliff.

**Education** - The Hardin County School System, accredited by the Southern Association of Colleges and Schools, provides public education to Radcliff. Several nonpublic schools, at Fort Knox Military Reservation and two private schools, provide education to Radcliff. The Elizabethtown Community College is located 13 miles south at Elizabethtown. Vocational training is provided by Elizabethtown State Vocational-Technical School at Elizabethtown.



**RADCLIFF LABOR MARKET AREA**  
With  
**MAJOR HIGHWAYS & RAILROAD SYSTEM**

Shaded area denotes Labor Market Area.



## LABOR MARKET STATISTICS

The Radcliff Labor Market Area includes Hardin County and the adjoining Kentucky counties of Breckinridge, Bullitt, Grayson, Hart, Larue, Meade, and Nelson.

POPULATION			
	1990	1980	1970
Labor Market Area	254,618	247,734	202,670
Radcliff	19,772	14,656	8,426
Hardin County	89,240	88,911	78,421

Source: U.S. Department of Commerce, Bureau of the Census, January 1991.

POPULATION PROJECTIONS				
	1995	2000	2010	2020
Labor Market Area	265,072	274,138	288,054	295,926
Hardin County	92,590	95,442	99,934	102,373

Note: Population projections are from Moderate Growth Series forecast.

Source: University of Louisville, Urban Studies Center, State Data Center.

ESTIMATED LABOR SUPPLY				
	Current		Not in Labor Force	Future
	Total	Unemployed		Becoming 18 years of age 1993 thru 1997
Labor Market Area*	19,898	8,226	11,672	20,123
Hardin County	4,930	2,166	2,764	6,712

\* Additional workers may be drawn from other nearby counties.

Note: Unemployed - persons unemployed and actively seeking work; Not in Labor Force - represents the number of persons who would enter the labor force if suitable employment were available (based on the assumption that persons in Kentucky would like to participate in the labor force in the same proportion that they do nationally).

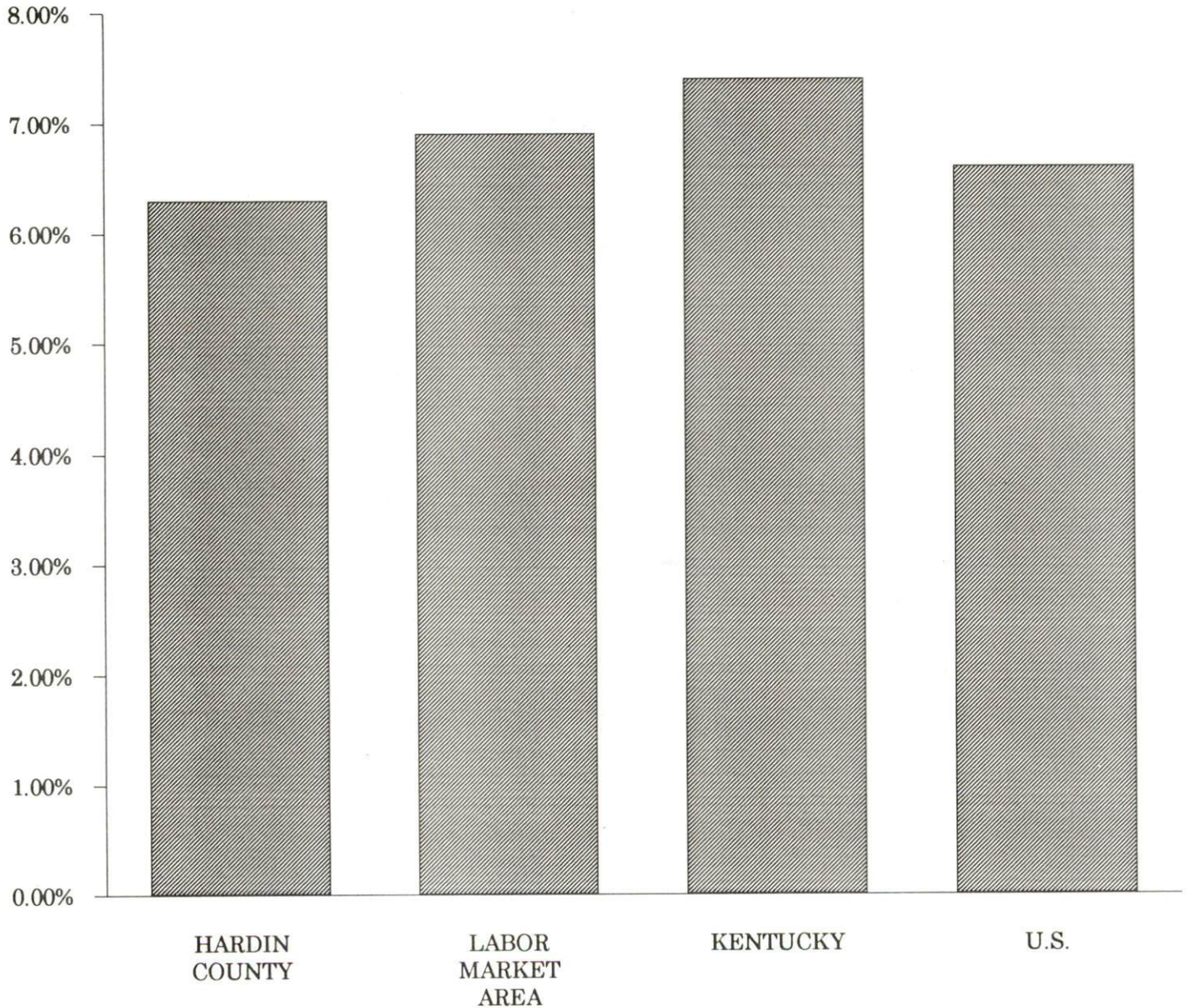
Sources: Kentucky Cabinet for Human Resources, Kentucky Labor Supply Estimates by County, 1991. Kentucky Cabinet for Economic Development, Future Labor Supply Becoming 18 Years of Age, 1993 thru 1997.

**LABOR FORCE CHARACTERISTICS OF RESIDENTS, 1992**

	<u>Hardin County</u>	<u>Labor Market Area</u>
Civilian Labor Force	36,029	114,506
Employment	33,742	106,642
Unemployment	2,287	7,864
Rate of Unemployment (%)	6.3	6.9

Source: Kentucky Cabinet for Human Resources, Kentucky Labor Force Estimates, Annual Averages, 1992.

**UNEMPLOYMENT RATES  
1992**

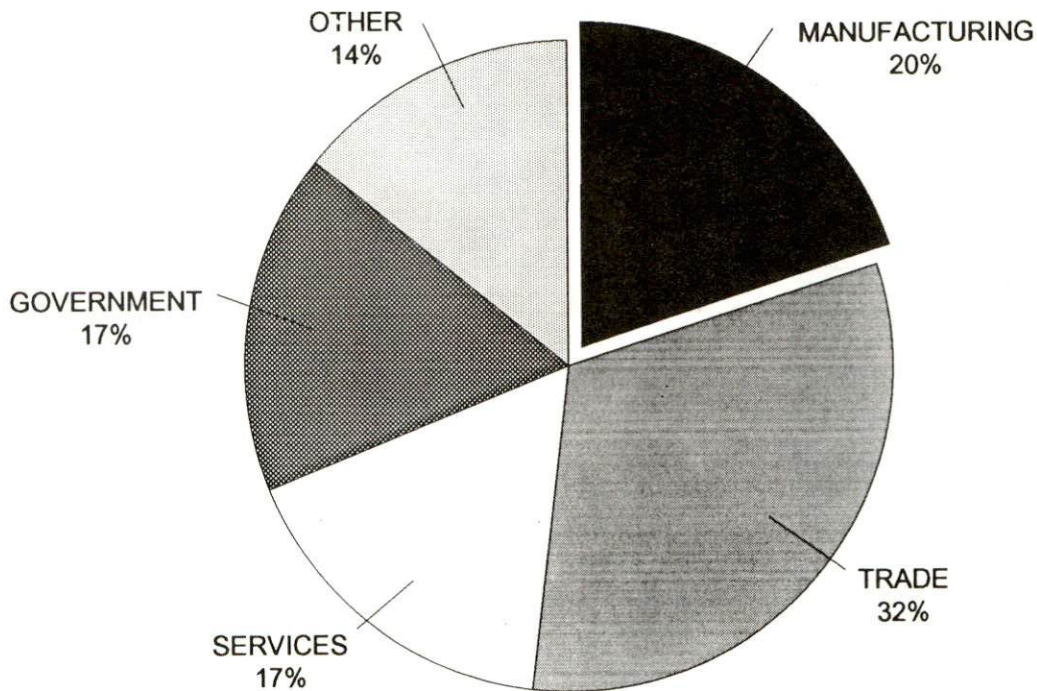


SELECTED COMPONENTS OF NONAGRICULTURAL EMPLOYMENT  
BY PLACE OF WORK, 1991

	Hardin County	Labor Market Area
All Industries (total)	25,479	58,073
Manufacturing	4,974	14,812
Wholesale & Retail Trade	8,047	16,205
Services	4,440	8,391
State/Local Government	4,391	10,307
Contract Construction	1,123	3,033

Note: Excludes domestic workers, railway workers, certain nonprofit corporations, majority of federal government workers, and self-employed workers.  
 Source: Kentucky Cabinet for Human Resources, Average Monthly Workers Covered by Kentucky Unemployment Insurance Law, 1991.

HARDIN COUNTY

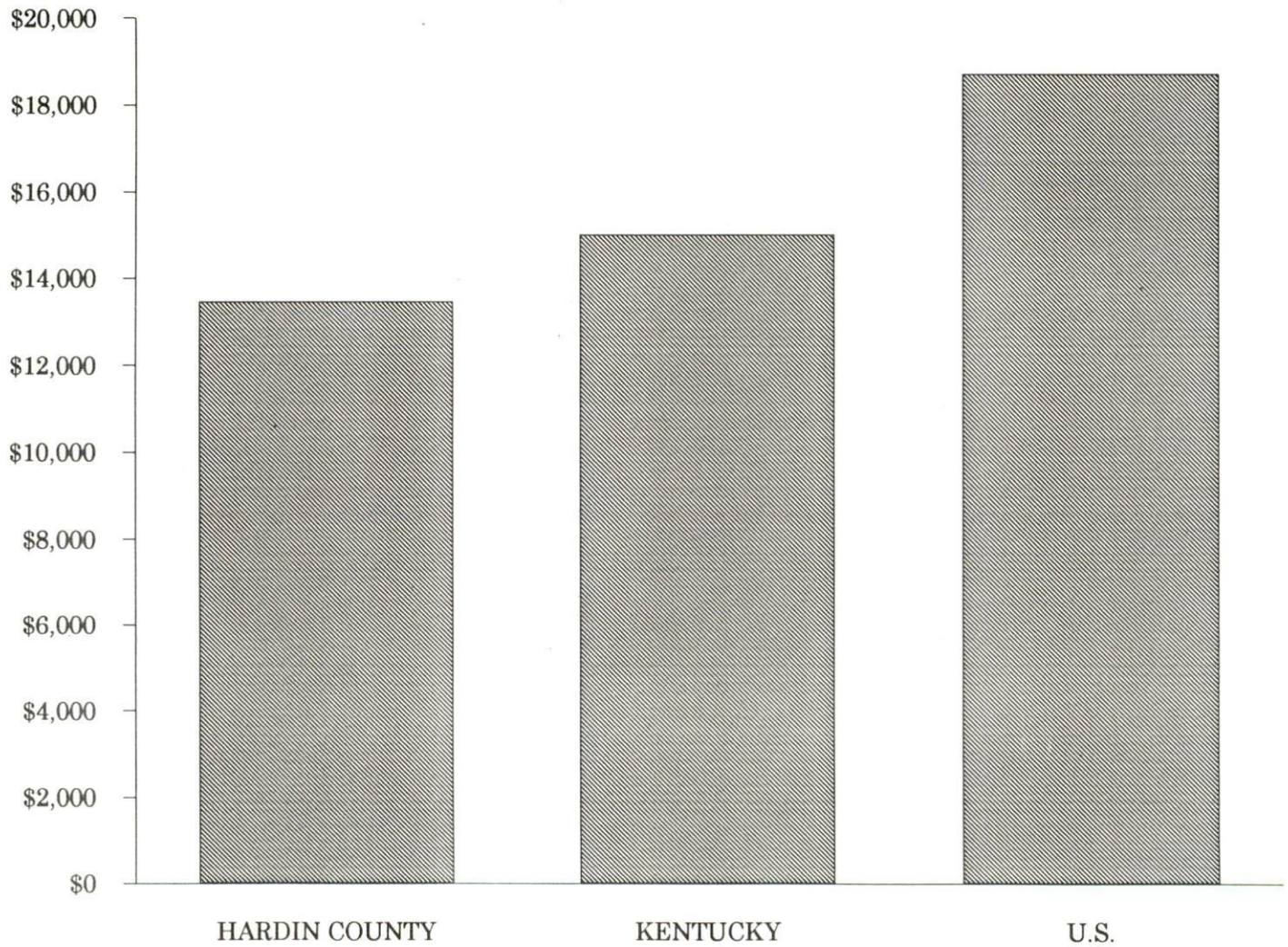


PER CAPITA PERSONAL INCOME

Area	1986	1990	Percent Change
Hardin County	\$9,966	\$13,459	35.0
Labor Market Area Range	\$8,304 - \$10,750	\$10,824 - \$14,580	-
Kentucky	\$11,273	\$14,992	33.0
U.S.	\$14,654	\$18,696	27.6

Source: U.S. Bureau of Economic Analysis, Kentucky Economic Information System, April 1992.

PER CAPITA PERSONAL INCOME  
1990



## AVERAGE PLACEMENT WAGES

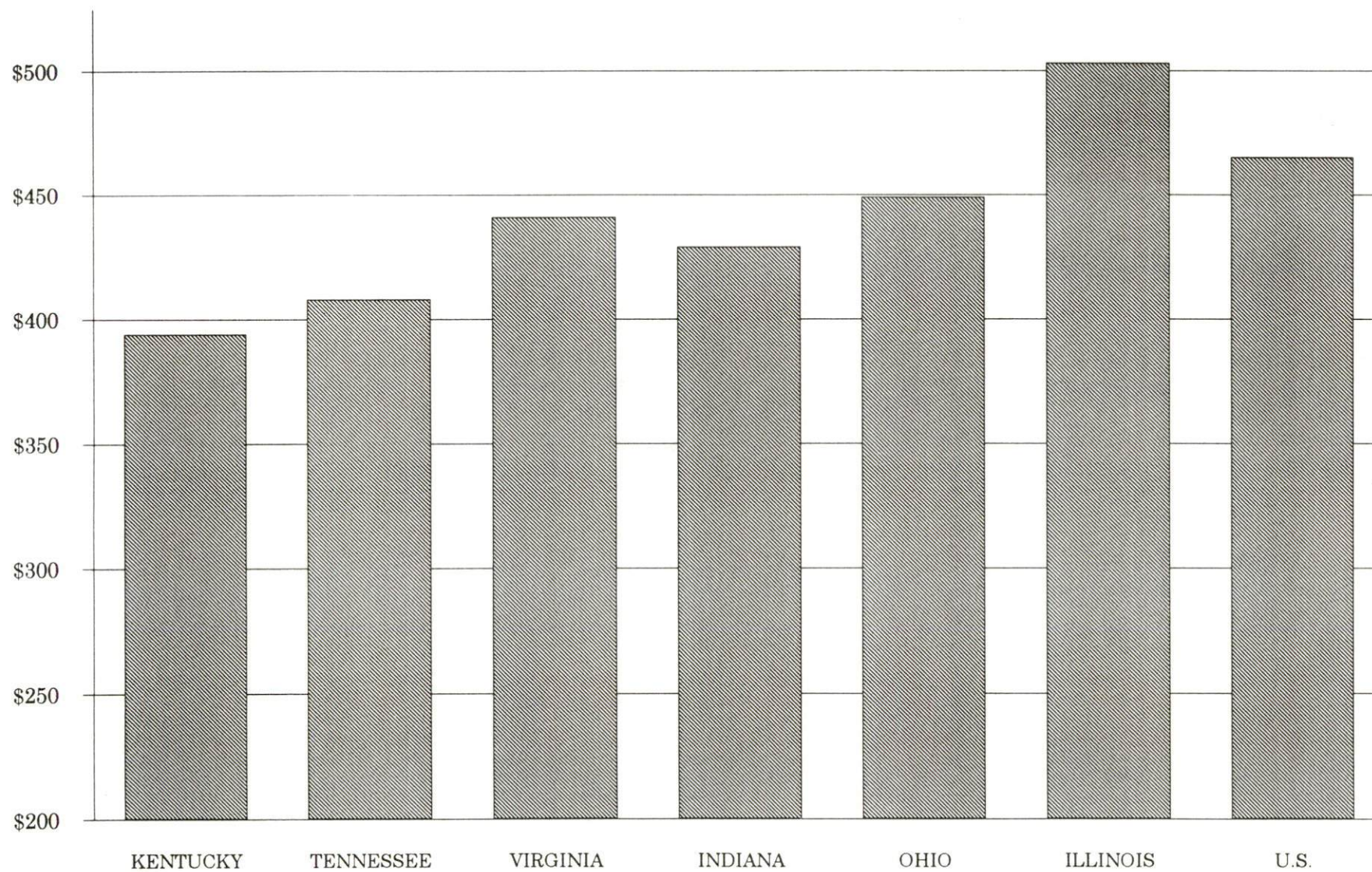
Hardin County is served by the Elizabethtown local office of the Kentucky Department for Employment Services. The focus of the following data is on job placements made by the Elizabethtown local office and may therefore be used as an indicator of the wages which employers in the area pay new employees. During the eight months which ended on February 28, 1993, the local employment office filled 1,771 job openings in various occupational categories. The average hourly wage for selected occupational categories were:

<u>OCCUPATIONAL CATEGORY</u>	<u>NUMBER OF PLACEMENTS</u>	<u>AVERAGE WAGE(\$)</u>
All Occupations	1,771	5.41
Clerical	595	8.97
Sales	48	4.66
Services (excluding domestic)	216	4.86
Agricultural, Fishery, Forestry, etc.	29	4.79
Processing	52	6.20
Machine Trades	414	6.00
Bench Work	74	4.29
Structural	123	6.58
Motor Freight/ Transportation	49	5.09
Packaging and Materials Handling	96	5.76
Other	3	10.28

The Elizabethtown local office also serves Breckinridge, Grayson, Larue, and Meade Counties. The above occupational categories are taken from the Dictionary of Occupational Titles published by the U.S. Department of Labor.

Source: Kentucky Cabinet for Human Resources, Department for Employment Services.

AVERAGE WEEKLY WAGES OF WORKERS COVERED BY  
UNEMPLOYMENT INSURANCE - 1991



AVERAGE WEEKLY WAGES BY INDUSTRY  
BY PLACE OF WORK, 1991\*

	Hardin County	Kentucky (State- Wide)	Tennessee	Virginia
All Industries	\$349.95	\$394.46	\$408.00	\$441.00
Mining & Quarrying	427.92	661.68	528.00	655.00
Contract Construction	336.66	410.33	436.00	452.00
Manufacturing	484.93	505.56	477.00	509.00
Transportation, Communications & Public Utilities	414.93	528.78	541.00	605.00
Wholesale & Retail Trade	214.10	268.42	N/A	N/A
Finance, Insurance & Real Estate	352.71	449.89	495.00	523.00
Services	349.44	350.41	394.00	455.00
State/Local Government	430.60	413.84	N/A	N/A
	<u>Indiana</u>	<u>Ohio</u>	<u>Illinois</u>	<u>U. S.</u>
All Industries	\$429.00	\$449.00	\$503.00	\$465.00
Mining & Quarrying	708.00	609.00	758.00	747.00
Contract Construction	499.00	510.00	635.00	514.00
Manufacturing	583.00	613.00	609.00	579.00
Transportation, Communications & Public Utilities	531.00	567.00	632.00	599.00
Wholesale & Retail Trade	N/A	N/A	N/A	N/A
Finance, Insurance & Real Estate	458.00	498.00	650.00	596.00
Services	368.00	398.00	462.00	443.00
State/Local Government	N/A	N/A	N/A	N/A

\* Wages for U.S. and surrounding states rounded to nearest dollar.

N/A Not Available.

Note: The average weekly wage for each category includes the salaries and wages of all persons working for that type business. For example, the manufacturing category includes both production workers and administrative personnel. Excludes domestic workers, railway workers, certain nonprofit corporations, majority of federal government workers, and self-employed workers.

Source: Kentucky Cabinet for Human Resources, Average Weekly Wages of Workers Covered by Kentucky Unemployment Insurance Law, 1991. U.S. Department of Labor, Bureau of Labor Statistics, Employment and Wages, Annual Averages, 1991, January 1993.



## EXISTING INDUSTRY

### RADCLIFF MANUFACTURING FIRMS, THEIR PRODUCTS AND EMPLOYMENT

<u>Firm</u> (Establishment date)	<u>Product</u>	<u>1992</u> <u>Average Employment</u>
Cole Industries (1976)	Truck Toppers	40
Eagle Thermoplastics, Inc. (1985)	Plastic and aluminum containers	12
Hardin County Ready Mix (1979)	Ready-mixed concrete	24
Lincoln Trail Concrete (1966)	Precast concrete products, ready-mixed concrete	3
Racliff Concrete, Inc. (1957)	Ready-mixed concrete	50
Royalty Printing Company & The Sentinel (1957)	Newspaper, job printing	5
UARCO, Inc. (1972)	Business forms	232

**Sources:** Kentucky Cabinet for Economic Development, Division of Research and City of Radcliff.

### LABOR ORGANIZATIONS IN MANUFACTURING FIRMS

Union

International Brotherhood  
of Teamsters, Chauffeurs,  
Warehousemen and Helpers  
of America

Representing workers at:

Radcliff Concrete, Inc.

## SELECTED INDUSTRIAL SERVICES

---

---

<u>Types of Services</u>	<u>Location</u>	<u>Mileage from Radcliff</u>
Custom Plastics Producers	Louisville, Kentucky	35
Electric Motor Repair	Elizabethtown	13
Heat Treating Facilities	Louisville	35
Industrial Waste Removal	Elizabethtown	13
Machine Shops, Tool & Die	Elizabethtown	13
Metal Castings	Louisville	35
Metal Finishers	Elizabethtown	13
Metal Service Centers	Elizabethtown	13
Millwrights & Riggers	Louisville	35

---

Sources: Kentucky Cabinet for Economic Development, Division of Research.

## TRANSPORTATION

### Highways

Radcliff is directly served by U.S. Highway 31W, a "AAA"-rated (80,000-pound gross load limit) trucking highway. U.S. 31W provides Radcliff with four-lane access to two major highway networks. Interstate 65, the Western Kentucky Parkway, and the Blue Grass Parkway are all accessible at Elizabethtown, 14 miles south of Radcliff. Interstate 65 is a major north-south traffic artery extending from Chicago, Illinois, to the Gulf of Mexico. The Blue Grass Parkway and the Western Kentucky Parkway are both multi-lane highways connecting with Interstate 65. Together they extend from Interstate 24 in western Kentucky to Lexington in central Kentucky.

U.S. 31W also provides four-lane access to a highway network at Louisville, 32 miles northeast of Radcliff, which includes Interstate 64, Interstate 65, Interstate 71, and many other U.S. and Kentucky highways. The Gene Snyder Freeway is 21 miles north of Radcliff via U.S. 31W and provides easy multi-lane access to and from Interstate 65, just south of the Louisville metropolitan area.

Logsdon Parkway (Kentucky Highway 313) is in its second phase of construction. When completed in 1995, Kentucky 313 will provide a direct link from Radcliff to Interstate 65. At present, Logsdon Parkway provides four-lane access to the Radcliff Industrial Park.

#### HIGHWAY MILES FROM RADCLIFF, KENTUCKY, TO SELECTED MARKET CENTERS

City	Highway Miles	City	Highway Miles
Atlanta, GA	366	Los Angeles, CA	2,101
Baltimore, MD	633	Louisville, KY	35
Birmingham, AL	328	Nashville, TN	141
Chicago, IL	322	New Orleans, LA	663
Cincinnati, OH	136	New York, NY	795
Cleveland, OH	383	Pittsburgh, PA	423
Detroit, MI	396	St. Louis, MO	293
Knoxville, TN	228		

Note: Mileage computations are via the best interstate or primary highways, not necessarily the most direct route of travel.

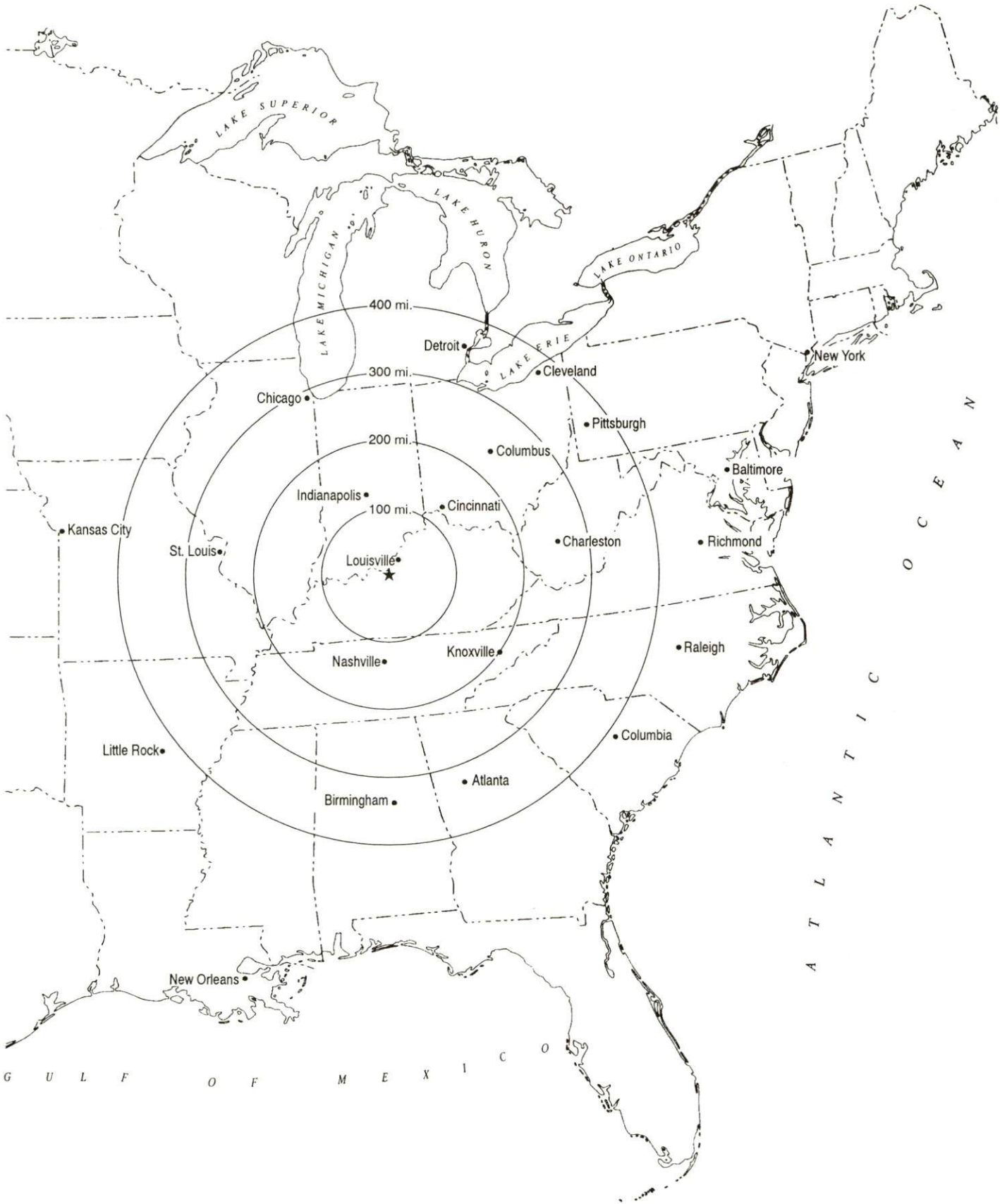
Sources: Rand McNally Standard Highway Mileage Guide, 1990. Official Kentucky Mileage Map, 1985.

### Truck Service

Twenty-nine common carrier trucking companies provide interstate and/or intrastate service to Radcliff.

Source: American Motor Carrier Directory, Spring 1993.

# Selected Market Centers



## Rail

The Paducah and Louisville Railway provides main line rail service to Radcliff. The nearest intermodal facilities are located in Louisville, 32 miles northeast of Radcliff.

For details on routing, schedules, rates, and services contact:

Vice President - Marketing & Sales  
Paducah and Louisville Railway  
1500 Kentucky Avenue  
Paducah, Kentucky 42001  
(502) 444-4341

## Air

### Nearest Small Craft Airport

Addington Field  
Location: 4 miles west of Elizabethtown;  
15 miles south of Radcliff  
Runways: 1 paved  
Length: 5,000 feet  
Traffic  
Control: Unicom, wind sock  
Lighting: Runway, lighted taxiway, and beacon, VASI  
Services: 100LL, Jet-A fuel, charter, major A & P repairs,  
hangar and tie-downs, flight instruction,  
rental cars, FBO, CLNC 119.45  
Air Freight Service: Chartered air freight service must be arranged

The Addington Field Airport Board recently constructed 12 additional T-hangars at the airport which now gives the airport a total of 22 T-hangars. Addington Field Airport is approximately 15 miles south of Radcliff.

### Nearest Scheduled Commercial Airline Service

Standiford Field  
Location: 4 miles southeast of center of Louisville,  
Kentucky; 31 miles northeast Radcliff  
Air Service: Air Toronto, Delta, Northwest, American,  
Continental, TWA, United, USAir, ComAir,  
Midway, Midwest Express, Southwest  
Daily Arrivals & Departures: 136

## Foreign Trade

The Louisville and Jefferson County Riverport Authority, 35 miles northeast of Radcliff, has been designated as a Foreign Trade Zone and offers complete U.S. Customs services for imports and exports.

## UTILITIES

### Electricity

Company serving portions of Radcliff and Hardin County - Kentucky  
Utilities Company

Source of power - Kentucky Utilities Company

For industrial rates contact:

Industrial Development Department  
Kentucky Utilities Company  
One Quality Street  
Lexington, Kentucky 40507  
(606) 255-2100

Company serving portions of Radcliff and Hardin County - Nolin Rural  
Electric Cooperative Corporation

Source of power - East Kentucky Power Cooperative

For industrial rates contact:

Industrial Development Department  
East Kentucky Power Cooperative  
P.O. Box 707  
Winchester, Kentucky 40392-0707  
(606) 744-4812

and/or

Nolin Rural Electric Cooperative  
Corporation  
612 East Dixie  
Elizabethtown, Kentucky 42701  
(502) 765-6153

Company serving northern portion of Hardin County - Louisville Gas  
and Electric Company

Source of power - Louisville Gas and Electric Company

For industrial rates contact:

Manager, Economic Development Department  
Louisville Gas and Electric Company  
P.O. Box 32010  
Louisville, Kentucky 40232  
In Kentucky: (502) 627-3717  
Out of State : (800) 252-0226

### Natural Gas

Company serving Radcliff - Louisville Gas and Electric Company

Source of supply - Texas Gas Transmission Corporation

For rates and supplies contact:

Manager, Economic Development Department  
Louisville Gas and Electric Company  
P.O. Box 32010  
Louisville, Kentucky 40232  
In Kentucky: (502) 627-3717  
Out of State: (800) 252-0226

## Public Water Supply

Company serving Radcliff - Hardin County Water District No. 1  
409 West Lincoln Trail Blvd.  
P.O. Box 489  
Radcliff, Kentucky 40159-0489  
(502) 351-3222 Fax #(502) 352-3055

Source -	Wells
Treatment plant capacity -	4,800,000 gallons per day
Average daily consumption -	3,172,686 gallons
Peak daily consumption -	4,123,000 gallons
Storage capacity -	3,487,000 gallons
Water pressure -	30 psi to 185 psi

The Hardin County Water District No. 1 constructed a 750,000-gallon elevated water storage tank and a 250,000-gallon storage tank in 1993. Total cost of the project was \$1.1 million.

The Hardin County Water District No. 1 plans to construct a new water treatment plant and/or enter into an agreement with another company to purchase treated water.

## Sewerage

Company serving Radcliff - City of Radcliff Wastewater Facility  
350 New Street  
Radcliff, Kentucky 40160  
(502) 351-6466 Fax #(502) 351-7329

Design capacity -	2,810,000 gallons per day
Average daily flow -	1,886,000 gallons
Type of treatment -	Secondary
Treated effluent discharged into -	Mill Creek

The City of Radcliff is in the early planning stages to construct a second wastewater treatment plant.

## CLIMATE

### Hardin County

#### Temperature

Normal (30-year record)	54.90 degrees
Average annual 1991	57.30 degrees
Record highest, July 1988 (47-year record)	103.00 degrees
Record lowest, January 1963 (47-year record)	-21.00 degrees
Normal heating degree days (30-year record)	4,814
(Heating degree day totals are the sums of negative departures of average daily temperatures from 65 degrees F.)	

#### Precipitation

Normal (30-year record)	45.68 inches
Mean annual snowfall (47-year record)	15.70 inches
Total precipitation 1991	41.80 inches
Mean number days precipitation (.01 inch or more) (47-year record)	129.40
Mean number days thunderstorms (47-year record)	44.90

#### Prevailing winds (through 1963)

South

#### Relative Humidity (28-year record, except 1 a.m. - 27-year record)

1 a.m.	77 percent
7 a.m.	82 percent
1 p.m.	60 percent
7 p.m.	64 percent

Source: U.S. Department of Commerce, Environmental Science Services Administration, Climatological Data, 1991. Station of record: Lexington, Kentucky.



## LOCAL GOVERNMENT

### Structure

Radcliff is governed by a mayor and six council members. The mayor serves a four-year term, while the council members are elected to two-year terms each. Hardin County is governed by a county judge/executive and eight magistrates. Each county official serves a four-year term.

### Planning and Zoning

City agency - Radcliff Planning Commission  
Zoning enforced - Within Radcliff city limits  
Subdivision regulations enforced - Within Radcliff city limits  
Local codes enforced - Building and housing  
Mandatory state codes enforced - Kentucky Plumbing Code, National Electric Code, Kentucky Boiler Regulations and Standards, Kentucky Building Code (modeled after BOCA code)

County agency - Hardin County Planning and Development Commission  
Zoning enforced - All areas of unincorporated Hardin County  
Subdivision regulations enforced - All areas of unincorporated Hardin County  
Local codes enforced - Building  
Mandatory state codes enforced - Kentucky Plumbing Code, National Electric Code, Kentucky Boiler Regulations and Standards, Kentucky Building Code (modeled after BOCA code)

### Local Fees and Licenses

Radcliff levies business license fees based upon annual gross receipts. Assessment rates on the businesses' gross receipts vary according to the type of business, and range from .00094 to .005. The minimum annual fees for businesses are \$25. The assessment rate for manufacturers is .00094 with a minimum annual fee of \$50.

Radcliff also levies a one percent occupational tax on wages, salaries, and commissions of individuals. Unloading license fees are \$30.50 per year in Radcliff.

PROPERTY TAXES

The Kentucky Constitution requires the state to tax all classes of taxable property, and state statutes allow local jurisdictions to tax only a few classes. All locally taxed property is subject to county taxes and school district taxes (either a county school district or an independent school district). Property located inside of city limits may also be subject to city property taxes.

Special local taxing jurisdictions (fire protection districts, watershed districts, and sanitation districts) levy taxes within their operating areas (usually a small portion of community or county).

Property assessments in Kentucky are at 100% fair cash value. A 15% reduction is automatically granted for accounts receivable.

**STATE PROPERTY TAX RATES PER \$100 VALUATION**

<u>Selected Classes of Property</u>	<u>1992 State Rate</u>	<u>Local Taxation Permitted</u>
Real Estate	\$0.184	YES
Manufacturing Machinery	0.150	NO
Pollution Control Equipment	0.150	NO
Inventories		
Raw Materials	0.050	NO
Goods in Process	0.050	NO
Finished Goods	0.050	YES
Motor Vehicles	0.450	YES
Other Tangible Personal Property	0.450	YES
Intangibles (Accounts Receivable, Money on Hand)	0.250	NO

**LOCAL PROPERTY TAX RATES PER \$100 VALUATION, 1992**

<u>Taxing Jurisdiction</u>	<u>Real Estate</u>	<u>Finished Goods &amp; Tangibles</u>	<u>Motor Vehicles</u>
Hardin County	\$0.1436	\$0.1476	\$0.1476
School Districts:			
Hardin County	0.4320	0.4320	0.5400
Cities:			
Radcliff	0.1750	0.1990	0.1990

## EDUCATION

### Public Schools

	Hardin County
Total Enrollment (Fall, 1992)	13,343
Accreditation	Southern Association of Colleges and Schools
Pupil-Teacher Ratio (1991-92)	19.2-1
Percent High School Graduates to College (1991-92)	67.6
Expenditures Per Pupil (1991-92)	\$3,499.20

Recent improvements to the Hardin County School System include: construction of a new middle school at Vine Grove and physical education facilities at four elementary schools. Also additional classroom space was constructed at both North and Central High School. Total combined cost of these projects was approximately \$12 million.

Students attending Hardin County Public Schools have averaged above state and national norms on achievement tests.

### Area Colleges and Universities

<u>Name</u>	<u>Location (Mileage from Radcliff)</u>	<u>Enrollment (Fall, 1992)</u>
McKendree College	Radcliff, Kentucky	319
Elizabethtown Community College	Elizabethtown, Kentucky (13)	4,297
Bellarmino College	Louisville, Kentucky (35)	2,977
Jefferson Community College	Louisville, Kentucky (35)	11,861
Spalding University	Louisville, Kentucky (35)	1,141
University of Louisville	Louisville, Kentucky (35)	22,634
Campbellsville College	Campbellsville, Kentucky (51)	1,042
Saint Catherine College	Springfield, Kentucky (52)	353

## VOCATIONAL-TECHNICAL TRAINING

Kentucky Tech schools are operated by the Cabinet for Workforce Development and provide secondary (Sec) and postsecondary (P/S) vocational-technical training.

<u>Kentucky Tech Schools</u>	<u>Location (Mileage from Elizabethtown)</u>	<u>Number of Program Offerings</u>	<u>Cumulative Enrollment 1991-1992</u>	<u>Approximate Number Completing Programs Annually</u>
Elizabethtown State Vocational- Technical School	Elizabethtown (13)	16	<u>Sec</u> <u>P/S</u> 42 562	190

### Customized Training

The Elizabethtown Industrial Foundation Training Consortium is a partnership of local companies, government, civic and education representatives who are dedicated to achieve training excellence by planning, conducting and evaluating training for people from local business and industry to ensure continuous improvement. The partnership cooperatively ties together Elizabethtown Community College and Elizabethtown SVTS. For information concerning the consortium, contact Elizabethtown SVTS.

The Kentucky Tech system, through its Training and Development Coordinators, will provide technical assistance and will identify and develop low cost customized training programs and services for both established and prospective businesses. Companies wanting to establish a customized training program should simply contact a Training and Development Coordinator located at the Kentucky Tech Northwest Region office in Elizabethtown.

### Assessment Services

Kentucky Tech Career Connections offers to business, education, and government agencies customized assessment in career inventories, interest inventories, psychomotor skills and academic potential as well as pre-hire assessment. A Career Connections Assessment Center is located on the campus of Elizabethtown STVS.

### Articulation

Articulation agreements developed between various colleges and universities and the Kentucky Tech system allow students to earn credits to be used when matriculating to degree programs at a college or university. Elizabethtown SVTS has articulation agreements with Elizabethtown Community College.

### Adult Basic Education

Adult education programs are available to adults who want to develop new skills, improve basic skills or earn a high school equivalency diploma. In Hardin County, adult literacy is provided by "Project Read" and adult basic education is provided by the Fort Knox School system and the Hardin County Board of Education.

## Bluegrass State Skills Corporation

The Bluegrass State Skills Corporation, an independent public corporation created and funded by the Kentucky General Assembly, provides programs of skills training to meet the needs of business and industry from entry level to advanced training, and from upgrading present employees to retraining experienced workers.

The Bluegrass State Skills Corporation is a major source for skills training assistance for a new or existing company. The Corporation works in partnership with other employment and job training resources and programs, as well as Kentucky's economic development activities, to package a program customized to meet the specific needs of a company.

## OTHER LOCAL FACILITIES

### Local Medical Personnel (Hardin County)

Physicians - 139

Dentists - 36

### Hospitals

<u>General Hospital</u>	<u>Location (Mileage from Radcliff)</u>	<u>Beds</u>
Hardin Memorial Hospital	Elizabethtown (13)	300

Medical staff - 140 physicians, 374 registered nurses, 21 licensed practical nurses

Hardin Memorial Hospital constructed a three-story addition to its facility. With this additional space the hospital now has a larger out-patient surgery facility, a larger emergency room, additional office space and created a radiation oncology center. Total cost of this project was approximately \$16 million.

### Other Medical Facilities and Services

Carefirst  
Communicare, Inc.  
Lincoln Trail Health Department  
North Hardin Medical Center

### Banks and Savings & Loan Associations

PNC Bank  
First Citizens Bank  
First Federal Savings Bank  
Fort Knox National Bank  
West Point National Bank

### Newspapers

The Sentinel

### Telephone Service

General Telephone Company

## RECREATION

### Local

Radcliff and Northern Hardin County residents enjoy a year-round recreation program with excellent facilities. The recreation department is staffed by a Recreation Director, Recreation Maintenance Supervisor and Custodian who work full-time and seasonal and part-time personnel are staffed as needed. A host of volunteers support the many programs for all age groups.

The David S. Colvin Community Center which houses the Radcliff Recreation Department office has two meeting rooms (one equipped with kitchen facilities), restrooms, and elevator. Facilities on the grounds include a junior olympic-size swimming pool, a wading pool, a walking course, two lighted tennis courts, half-court basketball, playground equipment, and hopscotch area.

Several civic organizations and groups meet in the center each month. These organizations include the Rotary Club, Chamber of Commerce, Women's Club, International Wives, Radcliff Homemakers, Senior Citizens, Adult Activity, Grand Squares, D.A.V. and Auxiliary and the Amateur Radio Club.

Activities supervised by the Radcliff Recreation Department includes kids and youth soccer, kids and youth baseball/softball leagues, little league football, cheerleading, adult softball leagues, water polo, swimming lessons, tennis lessons, tennis leagues, tennis tournaments, youth and adult volleyball leagues, teen dances, ballet, tap, and pointe lessons, square dance lessons, women's fitness programs, kidcrafts, co-ed basketball for first through eight grades, indoor soccer, little kids storybook/craft time, aquatic exercise classes, adult basketball leagues, Festival run/walk, turkey shoot, parents day out, stuffed animal pet show, Family Feud, staff superstars, flag football and many other programs/events.

Radcliff provides three community parks including Radcliff City Park, Duvall Park and Dawley Park.

Radcliff City Park with entrances off U.S. Highway 31W and Hill Street offers picnic areas, playground equipment, basketball court, two pavilions, restroom facilities, walkways, shade trees, and ample parking space. The Hardin County Playhouse, a theater with seating for 75 persons, is located at the park and features five productions each year.

Duvall Park with entrances off Atcher Street and Carolyn Street provides five baseball/softball fields, a concession stand, restroom facilities, and convenient parking space.

Dawley Park with two entrances off Shelton Road has two adult softball fields, two soccer fields, one football field, soccer, playground equipment, a fitness course, two pavilions, picnic tables, grills, a concession stand, restroom facilities, and convenient parking space.

League play in all youth sports extends to Fort Knox and three surrounding communities.

Bingo, card games, and shuffleboard are among the list of senior citizen activities.

The Golden Armor Festival is held in Radcliff in September of each year and pays tribute to nearby Fort Knox and the military personnel stationed there. The events are open to the public. The week-long celebration features a parade, entertainment, music, food, crafts, funfest, sport tournaments, receptions, and a beauty pageant.

#### Area (Within 45 miles)

**The Patton Museum of Cavalry and Armor at Fort Knox**, adjacent to Radcliff, features exhibits depicting the history and development of cavalry and armored weapons. A military history and reference library is also available. The Patton Gallery displays many of General George S. Patton, Jr.'s personal items. Historic pieces of armor, including some captured from Germany by General Patton's army in World War II, are displayed on the museum grounds. The newest addition to the museum is the 350-seat "Abrams Auditorium," named for General Creighton Abrams. The facility can serve as a meeting area for large and small groups, and is available on advance-reservation basis

**Coke Museum** The Schmidt Museum of Coca Cola Memorabilia, located inside the Coca Cola bottling plant, is located ten minutes from Radcliff. It contains what's considered to be the world's largest collection of Coke memorabilia.

**Abraham Lincoln Birthplace National Historic Site**, located 20 miles southeast of Radcliff near Hodgenville, features the log cabin which was the birthplace of Abraham Lincoln, enclosed within a granite memorial shrine. The grounds include 116 acres of the original Thomas Lincoln farm and a visitors' center with audiovisual programs and exhibits on the Lincoln family.

**Bernheim Forest Arboretum and Nature Center**, located 34 miles east of Radcliff, is a privately endowed 10,000-acre forest and wildlife refuge. The area contains over 1,200 labeled varieties of plants, trees and shrubs; ornamental gardens; a nature center; nature trails and waterfowl ponds.

**Louisville**, 34 miles northeast of Radcliff, provides a wide variety of recreational opportunities. The most noted recreational event in Louisville is the Kentucky Derby at Churchill Downs. The "Run for the Roses" is the oldest continuously held horse race in the United States. Other attractions include: Kentucky Center for the Arts, Macauley Theatre, Actors Theatre of Louisville, Louisville Children's Theatre, the Louisville Ballet, the Kentucky Opera Association, several museums, the Louisville Zoological Gardens, University of Louisville sporting events, rock concerts, and the "Belle of Louisville" sternwheeler.

**My Old Kentucky Home State Park**, 38 miles east of Radcliff in Bardstown, portrays an image of the South's gentle and leisurely home life before the Civil War. The restored Georgian Colonial mansion is where composer Stephen Foster visited and where he was inspired to write "My Old Kentucky Home." A world-renown outdoor drama, "The Stephen Foster Story", is presented in the park's amphitheatre during the summer months. The park also offers a 40-site campground, a gift shop, a nine-hole golf course and pro shop, a picnic area, and planned recreation.

**E.P. "Tom" Sawyer State Park**, 45 miles northeast of Radcliff, is located near Louisville. Recreational facilities include an outdoor Olympic-size pool, a bathhouse, 12 lighted tennis courts, bicycle motor-cross track (BMX), softball fields, a one-mile fitness trail, a picnic area, an archery range, and soccer fields. Planned recreation and playground are offered year-round. Indoor facilities are available for basketball, volleyball, exercise classes, dance classes and various other events.



## COMMUNITY IMPROVEMENTS

Radcliff re-certified as a "Kentucky Certified City" in 1992, and is distinguished as a gold award winner recognizing eight consecutive years of certification. Re-certification is based on achievement in the following areas: existing industry assistance, small business assistance, educational resources, and community development factors of health care, public safety, arts and culture, recreation, governmental awareness and resources. In addition to receiving the 1992 Gold Award, Radcliff was recognized as a Hall of Fame community. This category not only demonstrates that a community is adequately prepared for immediate growth, but also that the community has analyzed emerging economic trends, and has set about planning for the future. The Certified Cities Program is sponsored by the Kentucky Chamber of Commerce.

Logsdon Parkway (Kentucky Highway 313) is in its second phase of construction. When completed in 1995, Kentucky 313 will provide a direct link from Radcliff to Interstate 65. At present, Logsdon Parkway provides four-lane access to the Radcliff Industrial Park.

The Hardin County Water District No. 1 constructed a 750,000-gallon elevated water storage tank and a 250,000-gallon storage tank in 1993. Total cost of the project was \$1.1 million.

The Hardin County Water District No. 1 plans to construct a new water treatment plant and/or enter into an agreement with another company to purchase treated water.

The City of Radcliff is in the early planning stages to construct a second wastewater treatment plant.

Hardin Memorial Hospital constructed a three-story addition to its facility. With this additional space the hospital now has a larger out-patient surgery facility, a larger emergency room, additional office space and created a radiation oncology center. Total cost of this project was approximately \$16 million.

Recent improvements to the Hardin County School System include: construction of a new middle school at Vine Grove and physical education facilities at four elementary schools. Also, additional classroom space was constructed at both North and Central High School. Total combined cost of these projects was approximately \$12 million.

The Addington Field Airport Board recently constructed 12 additional T-hangers at the airport which now gives the airport a total of 22 T-hangers. Addington Field Airport is approximately 15 miles south of Radcliff.

The Patton Museum of Cavalry and Armor recently constructed "Abrams Auditorium". The 350-seat facility can serve as a meeting area for large and small groups and is available on an advanced-reservation basis.



# KENTUCKY