

3-2000

Industrial Resources: Madison County - Berea

Kentucky Library Research Collections
Western Kentucky University, spcol@wku.edu

Follow this and additional works at: https://digitalcommons.wku.edu/madison_cty

Recommended Citation

Kentucky Library Research Collections, "Industrial Resources: Madison County - Berea" (2000). *Madison County*. Paper 3.
https://digitalcommons.wku.edu/madison_cty/3

This Report is brought to you for free and open access by TopSCHOLAR®. It has been accepted for inclusion in Madison County by an authorized administrator of TopSCHOLAR®. For more information, please contact topscholar@wku.edu.

Kentucky

Resources For Economic Development

Berea (Madison County)

March 2000



Prepared by
Kentucky Cabinet for Economic Development
Division of Research
in cooperation with
City of Berea
P. O. Box 8
Berea, KY 40403
Phone: 606-986-8528 Fax: 606-986-7657

Kentucky Cabinet for Economic Development
Division of Research
500 Mero Street
2300 Capital Plaza Tower
Frankfort, KY 40601
Telephone: (502) 564-4886
Fax: (502) 564-3256
Email: econdev@mail.state.ky.us

Cost of printing paid from state funds.

TABLE OF CONTENTS

	Page
BEREA, KENTUCKY – A RESOURCE PROFILE	1
LABOR MARKET STATISTICS.....	3
Population.....	3
Population Projections.....	3
Estimated Labor Supply	3
Labor Force Characteristics of Residents, 1998	4
Work Force Commuting Patterns, 1990	4
Selected Components of Nonagricultural Employment by Place of Work, 1997.....	4
Per Capita Personal Income.....	6
Average Placement Wages	6
Average Weekly Wages by Industry by Place of Work, 1998	7
EXISTING INDUSTRY	8
Berea Manufacturing Firms, Their Products and Employment	8
Labor Organizations in Madison County	9
Selected Industrial Services – Within 50 Miles of Berea	10
TRANSPORTATION.....	11
Highways.....	11
Truck Service	11
Rail	13
Air.....	13
UTILITIES.....	14
Electricity	14
Natural Gas.....	15
Public Water Supply.....	15
Sewerage	16
CLIMATE	17
LOCAL GOVERNMENT.....	18
Structure	18
Planning and Zoning.....	18
Local Fees and Licenses	18
Sales and Use Tax	18
State and Local Property Taxes	18
EDUCATION	20
Primary and Secondary Schools	20
Colleges and Technical Schools	21
OTHER LOCAL FACILITIES.....	24
RECREATION	25
APPENDIX - DEFINITIONS	27

BEREA, KENTUCKY – A RESOURCE PROFILE

Berea, home of Berea College, is situated in southern Madison County near the edge of central Kentucky's Blue Grass Region. The city is located 40 miles south of Lexington, Kentucky; 113 miles southeast of Louisville, Kentucky; and 135 miles north of Knoxville, Tennessee.

Berea's reputation as a center of artists and craftsmen is known internationally. The community strives to preserve the Appalachian heritage of fine quality artistry and craftsmanship. Many shops and galleries are open to the public in Berea, including shops owned by organizations and by private individuals alike. In addition, numerous antique outlets are located in Berea.

Madison County covers a land area of 441 square miles and had an estimated 1998 population of 66,502 persons. Berea had an estimated population of 10,341 in 1998.

The Economic Framework – Madison County firms employed 23,847 people in 1997. Contract construction firms provided 713 jobs; manufacturing firms in the county reported 5,706 employees; wholesale and retail trade provided 6,725 jobs; 4,764 were employed in the service industry; and state and local government accounted for 4,809 jobs.

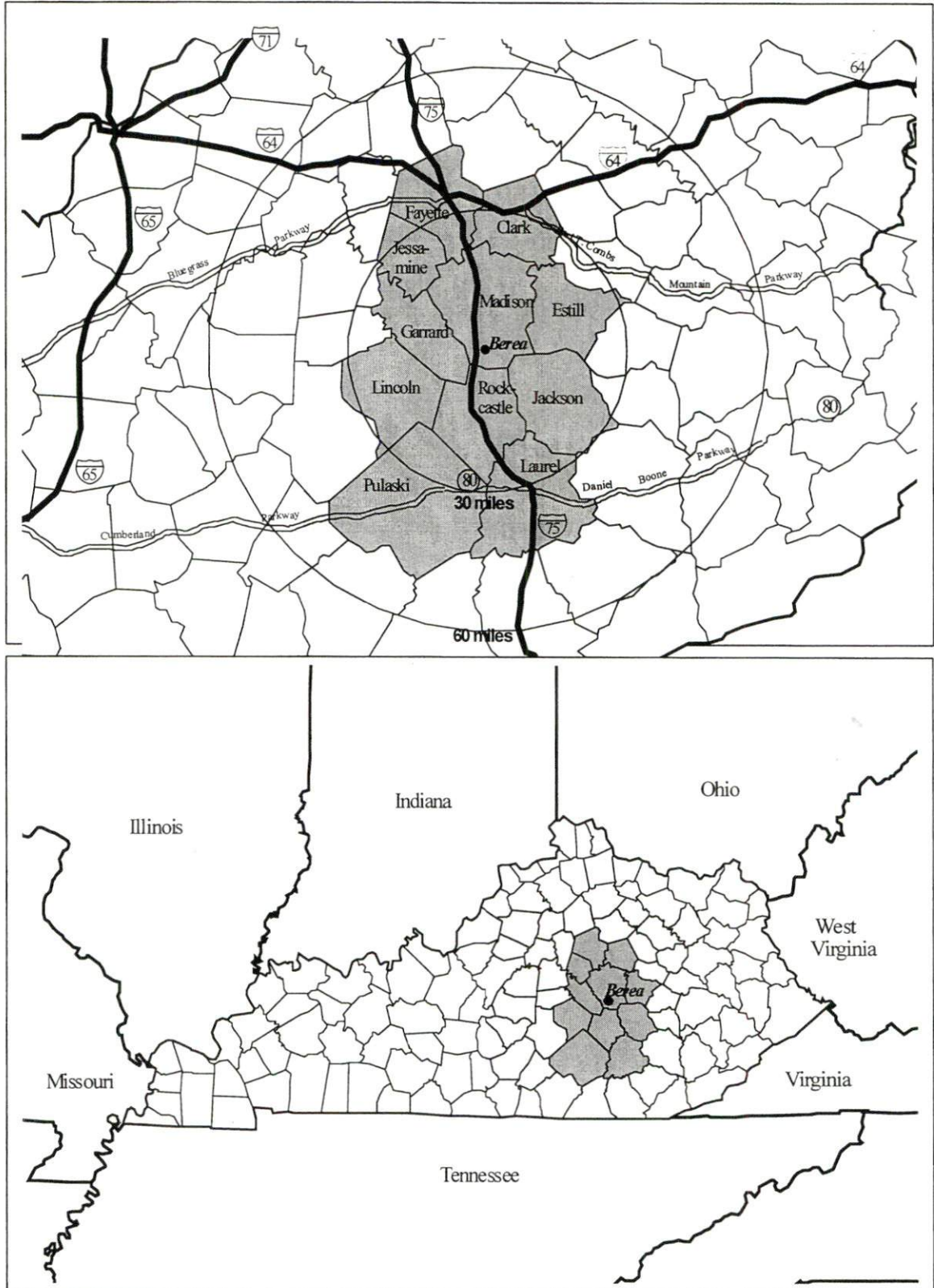
Labor Supply – There is a current estimated labor supply of 120,960 persons available for industrial jobs in the labor market area. In addition, from 2000 through 2004, approximately 37,518 young persons in the labor market area will become 18 years of age and potentially available for industrial jobs.

Transportation – AAA-rated trucking highways serving Berea include Interstate 75 and U.S. Highway 25. Twenty-three common carrier trucking companies provide interstate and/or intrastate service to Berea. CSX Transportation provides main line rail service to Berea. The nearest scheduled commercial airline service is available at Lexington's Blue Grass Airport, 43 miles northwest of Berea. The Madison Airport, fifteen miles north of Berea, maintains a 4,000-foot paved runway and offers charter service.

Power and Fuel – Berea receives electric power from the Berea College Electric Utility. Kentucky Utilities Company, Blue Grass Energy Cooperative Corporation and Clark Energy Cooperative, Inc. each serve portions of Madison County. Delta Natural Gas Company, Inc., provides natural gas service to Berea.

Education - The Madison County School System and the Berea Independent School System provide primary and secondary public education to Berea and Madison County. Three nonpublic schools also operate in Madison County. Berea College is a private, four-year college offering a unique, tuition-free work/study program. Fourteen other colleges and universities are located within 60 miles of Berea. Secondary technical education is available at the Madison County Area Technology Center in Richmond. Post secondary technical education is available at the Central Kentucky Technical College Lexington Campus and at the Laurel Technical College in London.

Labor Market Area Maps



Note: To obtain detailed topographical and general highway maps contact Maps and Publications at 502-564-4715, or for industrial site maps contact the Site Evaluation Division at 502-564-7140.

LABOR MARKET STATISTICS

The Berea labor market area includes Madison County and the following additional counties: Clark, Estill, Fayette, Garrard, Jackson, Jessamine, Laurel, Lincoln, Pulaski, and Rockcastle.

Population

	<u>1980</u>	<u>1990</u>	<u>1995*</u>	<u>1998*</u>
Labor Market Area	467,059	508,801	546,006	564,520
Madison County	53,352	57,508	64,202	66,502
Berea	8,600	9,129	9,786	10,341

Note: * Population estimates.

Source: U.S. Department of Commerce, Bureau of the Census.

Population Projections

	<u>2000</u>	<u>2010</u>	<u>2020</u>
Labor Market Area	575,497	614,387	637,573
Madison County	68,528	75,527	79,924

Source: University of Louisville, Urban Studies Center, State Data Center.

Estimated Labor Supply

	<u>Available Labor, 1998</u>			<u>Future Labor</u>	
	<u>Total</u>	<u>Unemployed</u>	<u>Potential Labor Supply</u>	<u>Under-employed</u>	<u>Becoming 18 years of age 2000 through 2004</u>
Labor Market Area	120,960	8,890	8,873	103,196	37,518
Madison County	11,326	871	832	9,622	4,307

Note: Unemployed – people not working but actively seeking work. Potential Labor Supply – represents the number of persons not in the labor force, but would like a job (based on national estimates). Underemployed – people employed in wholesale/retail trade and non-professional services. See Appendix for further explanation.

Sources: U.S. Department of Labor, Bureau of Labor Statistics. U.S. Department of Commerce, Bureau of the Census. Kentucky Cabinet for Economic Development, Future Labor Supply Becoming 18 Years of Age, 1999 through 2003.

Labor Force Characteristics of Residents, 1998

	<u>Madison County</u>	<u>Labor Market Area</u>
Civilian Labor Force	35,080	298,097
Employed	34,209	289,207
Unemployed	871	8,890
Unemployment Rate (%)	2.5	3.0

Source: U.S. Department of Labor, Bureau of Labor Statistics.

Work Force Commuting Patterns, 1990

Workers commuting into Madison County	4,849
Workers commuting out of Madison County	6,448
Workers residing and working in Madison County	20,436

Source: University of Louisville, State Data Center.

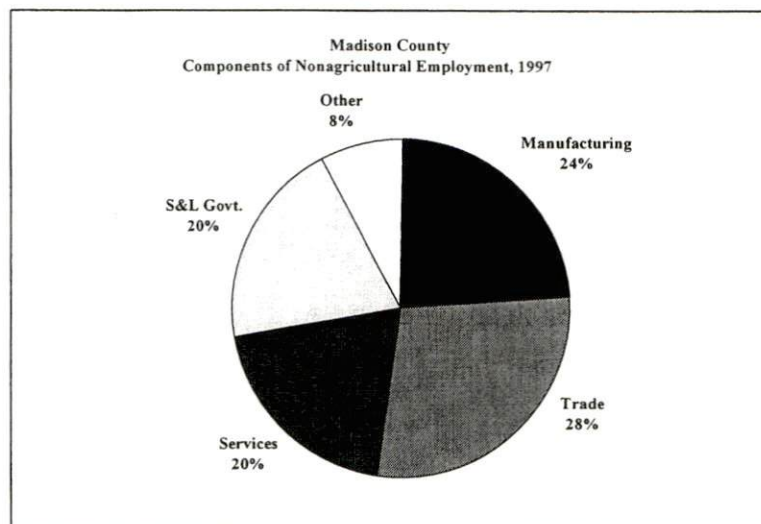
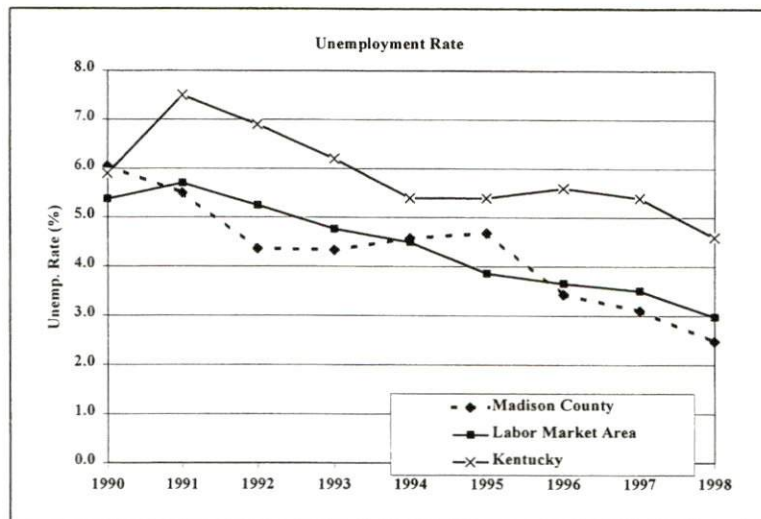
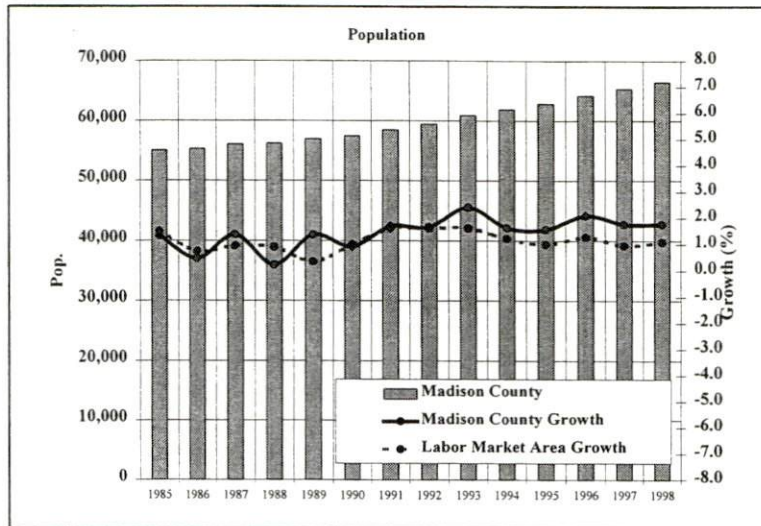
Selected Components of Nonagricultural Employment by Place of Work, 1997

	<u>Madison County</u>	<u>Labor Market Area</u>
All Industries	23,847	261,853
Mining & Quarrying	N/A	514
Contract Construction	713	13,835
Manufacturing	5,706	43,184
Transportation & Public Utilities	464	12,415
Wholesale & Retail Trade	6,725	70,325
Finance, Insurance, & Real Estate	549	10,593
Services	4,764	66,263
State & Local Government	4,809	41,084
Other	110	3,494

Note: Excludes domestic workers, railway workers, certain nonprofit corporations, majority of federal government workers, and self-employed workers. N/A – Data not available.

Source: Kentucky Workforce Development Cabinet, Average Monthly Workers Covered by Kentucky Unemployment Insurance Law, 1997.

Selected Charts



Per Capita Personal Income

	<u>1993</u>	<u>1997</u>	<u>Percent Change (1993-1997)</u>
Madison County	\$15,357	\$18,249	18.8%
Kentucky	\$17,309	\$20,570	18.8%
U.S.	\$21,368	\$25,288	18.3%
Labor Market Area Range	\$10,510 - \$22,931	\$13,132 - \$28,045	-

Source: U.S. Department of Commerce, Bureau of Economic Analysis, 1998.

Average Placement Wages

The Kentucky Department for Employment Services local office in Winchester serves Madison County. The focus of the following data is on job placements made by the Winchester local office and may therefore be used as an indicator of the wages which employers in the area pay new employees. During the twelve months ended on June 30, 1999, the local employment office filled Madison County job openings in various occupational categories. The average hourly wage for selected occupational categories were:

	<u>Number of Placements</u>	<u>Average Wage (\$)</u>
All Occupations	3,315	6.12
Professional, Technical & Managerial	36	5.82
Clerical	428	5.61
Sales	106	3.79
Domestic	11	5.43
Services (excluding domestic)	280	5.46
Agricultural, Fishery, Forestry, etc.	12	5.50
Processing	131	6.69
Machine Trades	366	6.52
Bench Work	1,473	6.11
Structural	263	7.51
Motor Freight & Transportation	57	5.81
Packaging & Materials Handling	149	6.91
Other	3	6.17

Note: Occupational categories are taken from the Dictionary of Occupational Titles published by the U.S. Department of Labor. The Winchester local office serves Clark, Estill, Madison and Powell Counties.

Source: Kentucky Workforce Development Cabinet, Department for Employment Services.

Average Weekly Wages by Industry by Place of Work, 1998

	<u>Madison County</u>	<u>Kentucky (Statewide)</u>	<u>Tennessee</u>	<u>Virginia</u>
All Industries	\$439.81	\$512.00	\$546.00	\$595.00
Mining & Quarrying	N/A	808.00	896.00	799.00
Contract Construction	399.00	543.00	585.00	567.00
Manufacturing	616.90	666.00	641.00	670.00
Transportation & Public Utilities	533.72	686.00	674.00	842.00
Wholesale & Retail Trade	265.69	357.00	413.00	416.00
Finance, Insurance, & Real Estate	423.51	652.00	757.00	815.00
Services	382.91	462.00	521.00	628.00
State & Local Government	533.69	494.00	511.00	551.00
	<u>Indiana</u>	<u>Ohio</u>	<u>Illinois</u>	<u>U.S.</u>
All Industries	\$560.00	\$579.00	\$668.00	\$610.00
Mining & Quarrying	883.00	813.00	910.00	1,000.00
Contract Construction	642.00	650.00	804.00	641.00
Manufacturing	772.00	801.00	816.00	770.00
Transportation & Public Utilities	662.00	698.00	798.00	756.00
Wholesale & Retail Trade	371.00	409.00	479.00	435.00
Finance, Insurance, & Real Estate	686.00	736.00	1,023.00	935.00
Services	476.00	510.00	608.00	577.00
State & Local Government	526.00	586.00	638.00	598.00

Note: The average weekly wage for each category includes salaries and wages of all persons working for that type of business. For example, the manufacturing category includes both production workers and administrative personnel. Domestic workers, railway workers, certain nonprofit corporations, majority of federal government workers, and self-employed workers are excluded. Wages for U.S. and surrounding states rounded to nearest dollar. N/A – Data not available.

Sources: Kentucky Workforce Development Cabinet, Average Weekly Wages of Workers Covered by Kentucky Unemployment Insurance Law, 1998. U.S. Department of Labor, Bureau of Labor Statistics, Employment and Wages, Annual Averages, 1998, December 1999.

EXISTING INDUSTRY

Berea Manufacturing Firms, Their Products and Employment

<u>Firm</u>	<u>Product(s)</u>	<u>1999 Emp.</u>	<u>Date Established</u>
A & P Machine & Tool, Inc.	Machine shop: custom tooling; general, CNC & production machining	7	1996
Alcan Rolled Products, Corp.	Ingots & recycled aluminum cans	120	1989
B & K Machine & Tool, Inc.	Machine shop: general machining, tooling, custom metal fabricating, drilling, boring, lathe & mill work	3	N/A
Berea Citizen	Newspaper publishing	5	1899
Berea College Crafts	Wooden furniture & toys, games, brooms, baby blankets, place mats, couch throws, ceramics & wrought iron accessories	200	1893
Berea Sign Co.	Handcrafted wooden signs, banners & vehicle lettering	1	1973
Berea Tool & Cutter Grinding	Machine shop: jigs, fixtures, tools, drill bits, specialty machining, drilling, boring, cutting, honing, surface grinding, sharpening, lathe & mill work	13	1984
Berea Top Shop	Counter tops	9	1978
Bluegrass Wire Harness, Inc.	Fork lift industry electrical wiring harnesses	30	1986
Booneway Farms	Jellies, preserves, sauces, syrups, seasonings & mustards	20	1981
Central Kentucky Mixed Concrete	Ready-mixed concrete	6	1983
Churchill Weavers, Inc.	Baby blankets, afghans & ladies' accessories	95	1922
Dresser Industries, Inc.	Pressure gauges	400	1961
Galaxy Co.	Textile screen printing	5	1990
Gastineau, Kenneth Jewelry	Costume jewelry	2	1985
Haley Custom Furniture	Custom wooden household furniture	2	1986
Hall's Print Shop	Commercial offset printing, computer typesetting, staple & saddle stitch binding	4	1988
Hayes Lemmerz International	Semi trailer hubs & drums	280	1986
Integrity Mold & Die Ltd., Inc.	Tools & dies, plastic injection & thermoform molds	20	1989
Keller Mehler	Custom hardwood furniture	1	1979
Kentucky Homes Magazine	Magazine publishing	9	1989
KI-USA Corp	Machined, metal stamped & cationic painted automotive parts & components, arc & resistance welding assemblies	300	1988
Matsushita Electric Motor Corp.	Small electric motors	200	1996
Moore Cabinets	Custom commercial & household kitchen, bath, entertainment cabinets & vanities	7	N/A
Municipal Sign	Aluminum & vinyl lettered signs	1	N/A
NACCO Materials Handling Group	Industrial fork lift trucks & uprights	590	1973

<u>Firm</u>	<u>Product(s)</u>	<u>1999 Emp.</u>	<u>Date Established</u>
Parker Seal Co.	Rubber O-rings	200	1951
Phoenix Poke Boats, Inc.	Fiberglass kayaks & small boats	12	1973
PPG Industries, Inc.	Automobile windshields	150	1989
S & S Custom Machining	Machine shop: general & precision machining; MIG & TIG welding	4	N/A
Simple Gifts, Inc.	Custom shaker style furniture & oval boxes	2	1982
Tokico (USA) Inc.	Automobile shock absorbers, struts, brake systems & air compressors	575	1987
Tolle Gallery	Picture frames & lithographic printing	3	1980
Upstairs Gallery	Decorative furniture & dulcimers	3	1977
Weaver's Bottom	Corn shuck dolls; woven cotton & wool bedspreads, placemats, napkins & custom items	2	1975

Note: N/A - Data not available.

Sources: Kentucky Directory of Manufacturers published by Harris InfoSource in cooperation with the Kentucky Cabinet for Economic Development, Division of Research.

Labor Organizations in Madison County

International Brotherhood of Electrical Workers, AFL-CIO
 International Union of Electronic, Electrical, Technical, Salaried, Machine and Furniture Workers, AFL-CIO
 International Union, United Automobile, Aerospace and Agricultural Implement Workers of America-UAW
 National Conference of Firemen and Oilers, SEIU, AFL-CIO, CLC
 United Paperworkers International Union, AFL-CIO

Source: Kentucky Cabinet for Economic Development, Division of Research.

Selected Industrial Services – Within 50 Miles of Berea

Miles	City	Custom Plastics Producers	Electric Motor Repair	Heat Treating Facilities	Industrial Waste Removal	Machine Shops, Tool & Die	Metal Castings	Metal Finishers	Metal Service Centers	Mill- wrights & Riggers
-	Berea				X	X				
11	Richmond	X		X		X		X		
13	Waco				X					
14	Crab Orchard					X				
26	Nicholasville	X			X	X				
27	Danville	X	X		X	X				
28	Clay City					X				
30	Stanton					X				
30	Winchester		X			X			X	
33	Harrodsburg					X				
33	Lexington	X	X		X	X		X		X
38	Mount Sterling					X		X		
38	Somerset		X		X	X				
39	Means					X				
41	Versailles					X				
43	Paris					X				
45	Corbin					X			X	
46	Georgetown	X		X		X				
46	Lawrenceburg					X				

Note: Miles are calculated as the straight-line distance from city center to city center; not road miles.

Source: Kentucky Cabinet for Economic Development, Division of Research.

TRANSPORTATION

Highways

Interstate 75 and U.S. Highway 25 are AAA-rated (80,000-pound gross load limit) trucking highways serving Berea. Two interchanges of Interstate 75 are located within two miles west of Berea. Interstate 75 provides direct access to Interstate 64, 37 miles north of Berea near Lexington. The Mountain Parkway is accessible 38 miles northeast of Berea, and provides multi-lane highway access to eastern Kentucky. The Cumberland Parkway, accessible 42 miles southwest of Berea, provides multi-lane highway access to western Kentucky. The Daniel Boone Parkway is accessible 38 miles south of Berea and provides access to southeast Kentucky.

Highway Miles from Berea, Kentucky to Selected Market Centers

<u>City</u>	<u>Highway Miles</u>	<u>City</u>	<u>Highway Miles</u>
Atlanta, GA	344	Indianapolis, IN	229
Baltimore, MD	552	Kansas City, MO	623
Birmingham, AL	389	Knoxville, TN	135
Charleston, WV	188	Lexington, KY	40
Chicago, IL	411	Louisville, KY	113
Cincinnati, OH	122	Minneapolis, MN	822
Cleveland, OH	368	Nashville, TN	211
Columbia, SC	395	New Orleans, LA	732
Columbus, OH	225	New York, NY	720
Dallas, TX	871	Pittsburgh, PA	412
Des Moines, IA	700	Raleigh, NC	492
Detroit, MI	381	Richmond, VA	507
Evansville, IN	231	St. Louis, MO	374
Huntington, WV	140	Tallahassee, FL	613

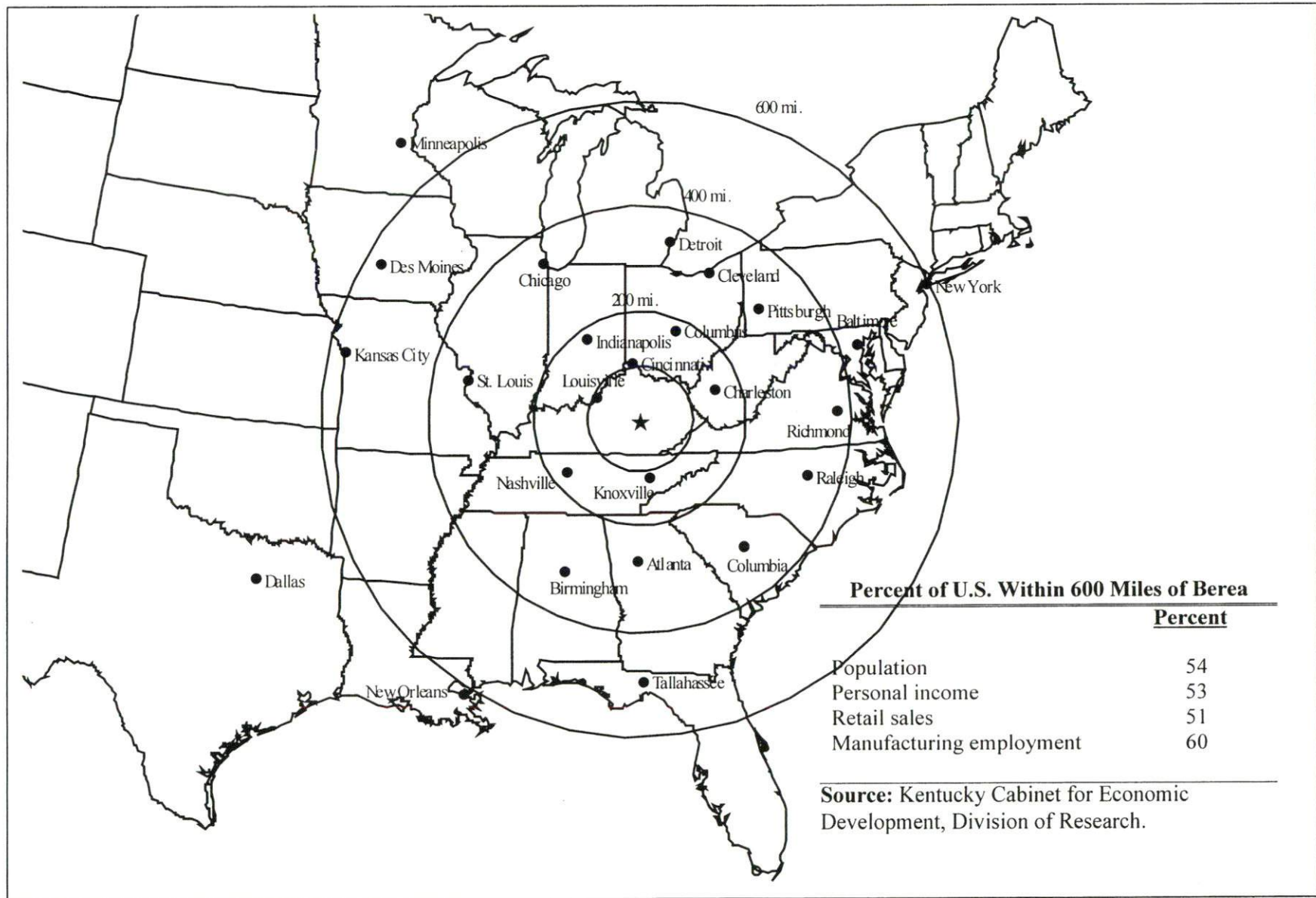
Note: Mileage computations are via the best interstate or primary highways, not necessarily the most direct route of travel.

Source: AAA Map 'n' Go, DeLORME, 1998.

Truck Service

Twenty-three common carrier trucking companies provide interstate and/or intrastate service to Berea. American Motor Carrier Directory, 2000 Edition.

Selected Market Centers Map



Rail

CSX Transportation provides main line rail service to Berea. Norfolk Southern Corporation provides the nearest intermodal facilities at Georgetown, Kentucky, 53 miles north of Berea.

For details on routing, schedules, rates, and services contact:

Manager of Industrial Development
CSX Transportation
9420 Bunsen Parkway
Suite 212
Louisville, KY 40220
(502) 499-3025

Air

Local

Location:	Madison Airport Richmond, KY
Distance from Berea:	15 miles north
Phone:	(606) 986-3913
Number of runways:	1
Length and type of longest runway:	4,000 feet (asphalt) The airport's runway will be extended to 4,410 feet in 2000.

Commercial/International

Location:	Blue Grass Airport Lexington, KY
Distance from Berea:	43 miles northwest
Phone:	(606) 254-9336
Air service:	ASA, Comair, Continental Express, Delta, Northwest Airlin, TW Express, United Express, US Airways
Daily arrivals & departures:	192

UTILITIES

Electricity

Service area:
Company:
Source of power:
For industrial rates contact:

Berea and parts of Madison County

Berea College Electric Utility
Kentucky Utilities Company

Berea College Electric Utility
C. P. O. 2337
Berea, KY 40404
(606) 986-9341, extension 6462

Service area:
Company:
Source of power:
For industrial rates contact:

parts of Madison County

Blue Grass Energy Cooperative Corporation
East Kentucky Power Cooperative

Blue Grass Energy Cooperative Corporation
1201 Lexington Road
P.O. Box 990
Nicholasville, KY 40340-0990
(606) 885-4191

and/or

East Kentucky Power Cooperative
Industrial Development Department
4775 Lexington Road
P.O. Box 707
Winchester, KY 40391
(606) 744-4812

Service area:
Company:
Source of power:
For industrial rates contact:

parts of Madison County

Clark Energy Cooperative, Inc.
East Kentucky Power Cooperative

Clark Energy Cooperative, Inc.
2640 Iron Works Road
P.O. Box 748
Winchester, KY 40392-0748
(606) 744-4251

and/or

East Kentucky Power Cooperative
Industrial Development Department
4775 Lexington Road, P.O. Box 707
Winchester, KY 40391
(606) 744-4812

Service area: **parts of Madison County**
Company: Kentucky Utilities Company
Source of power: Kentucky Utilities Company
For industrial rates contact:

Kentucky Utilities Company
Economic Development Department
One Quality Street
Lexington, KY 40507
(606) 255-2100

Natural Gas

Service area: **Berea**
Company: Delta Natural Gas Company, Inc.
Source of supply: Columbia Gas Transmission Company, Tennessee Gas Pipeline Company, and local production

For rates and supplies contact:

Delta Natural Gas Company, Inc.
VP-Public and Consumer Affairs
3617 Lexington Road
Winchester, KY 40391
(606) 744-6171

Public Water Supply

Service area: **Berea**
Company: Berea College Utilities
C.P.O. 2207
Berea, KY 40404
(606) 985-3666

Treatment facilities information:
Source of raw water: Reservoirs
Treatment plant capacity: 4,000,000 gallons per day
Average daily consumption: 2,405,484 gallons
Peak daily consumption: 3,292,140 gallons
Storage capacity: 3,600,000 gallons
Water pressure: 70 psi to 90 psi

Service area: **Southern Madison County**
Company: Southern Madison Water District
207 N. Dogwood Dr.
P. O. Box 220
Berea, KY 40403
(606) 986-9031

Treatment facilities information:
Source of treated water: Berea College Utilities
Amount that can be purchased: 1,000,000 gallons per day
Average daily consumption: 708,953 gallons

Peak daily consumption: 1,031,890 gallons
Storage capacity: 860,000 gallons
Water pressure: 43 psi to 165 psi

Improvements: The water district is extending 10,130 feet of six-inch line and 9,600 feet of four-inch line to Davis Hollow and Gravel Lick at a cost of \$57,215.92. Wolf Gap and Chapel Road will have 4,520 feet of six-inch line and 4,400 feet of four-inch line extended at a cost of \$51,259.38. Relocation and upgrade of 4,775 feet of eight-inch line on Highway 595 has been completed at a cost of \$88,510.00. On Highway 21 West, 8,960 feet of six-inch line was extended, as well as 4,640 feet of four-inch line at a cost of \$98,360.00

Sewerage

Service area: **Berea**
Company: Berea Sewer Commission
P. O. Box 926
Berea, KY 40403
(606) 986-4391

Design capacity: 2,342,000 gallons per day
Average daily flow: 2,200,000 gallons
Type of treatment: Secondary
Treated effluent discharged into: Silver Creek

Improvements: The Berea Sewer Commission is in the second year of a four-year rehabilitation project of the collection system. Total cost of the project is \$1.0 million. A plant expansion to 4.0 million-gallon capacity is planned at an estimated cost of \$4.0 million. Completion is anticipated for 2005.

CLIMATE

Madison County

Temperature

Normal (115-year record)	55.1 degrees
Average annual, 1998	57.6 degrees
Record highest, July 1988 (54-year record)	103 degrees
Record lowest, January 1963 (54-year record)	-21 degrees
Normal heating degree days (30-year record)	4,783
Normal cooling degree days (30-year record)	1,140

Precipitation

Normal (30-year record)	44.55 inches
Mean annual snowfall (30-year record)	17.5 inches
Total precipitation, 1998	49.60 inches
Mean number days precipitation (0.01 inch or more) (30-year record)	129.1
Mean number days thunderstorms (54-year record)	43.8

<u>Prevailing Winds</u> (27-year record)	South
--	-------

Relative Humidity (30-year record)

1 a.m.	77 percent
7 a.m.	82 percent
1 p.m.	60 percent
7 p.m.	64 percent

Notes: Heating degree day totals are the sums of negative departures of average daily temperatures from 65 degrees F. Cooling degree day totals are the sums of positive departures of average daily temperatures from 65 degrees F.

Source: U.S. Department of Commerce, National Climatic Data Center, Local Climatological Data, 1998.
Station of record: Lexington, Kentucky.

LOCAL GOVERNMENT

Structure

Berea is governed by a mayor, eight council members, and a full-time city administrator. The mayor is elected to a four-year term, while the council members each serve two-year terms. Madison County is governed by a county judge/executive and four magistrates. Each county official is elected to a four-year term.

Planning and Zoning

City agency - Berea Planning and Zoning Commission

Zoning enforced - Within the city

Subdivision regulations enforced - Within the city and one mile beyond the corporate limits

Local codes enforced - Building and housing

Mandatory state codes enforced - Kentucky Plumbing Code, National Electric Code, Kentucky Boiler Regulations and Standards, Kentucky Building Code (modeled after BOCA code)

Local Fees and Licenses

Madison County, excluding the cities of Berea and Richmond, levies a one percent occupational license tax on wages, salaries, and commissions of individuals and on net profits of businesses. The City of Berea levies a two percent occupational license tax on wages, salaries, and commissions of individuals and on net profits of businesses located within the city. Taxpayers employed within the city pay only the city tax.

Sales and Use Tax

A state sales and use tax is levied at the rate of 6.0% on the purchase or lease price of taxable goods and on utility services. Local sales taxes are not levied in Kentucky.

State and Local Property Taxes

The Kentucky Constitution requires the state to tax all classes of taxable property, and state statutes allow local jurisdictions to tax only a few classes. All locally taxed property is subject to county taxes and school district taxes (either a county school district or an independent school district). Property located inside the city limits may also be subject to city property taxes. Property assessments in Kentucky are at 100% fair cash value. Accounts receivable are taxed at 85% of face value. Special local taxing jurisdictions (fire protection districts, watershed districts, and sanitation districts) levy taxes within their operating areas (usually a small portion of community or county).

State Property Tax Rates Per \$100 Valuation

<u>Selected Classes of Property</u>	<u>State Rate, 1998</u>	<u>Local Taxation Permitted</u>
Real Estate	\$0.153	Yes
Manufacturing Machinery	0.150	No
Pollution Control Equipment	0.150	No
Inventories:		
Raw Materials	0.050	No
Goods in Process	0.050	No
Finished Goods	0.050	Yes
Motor Vehicles	0.450	Yes
Other Tangible Personal Property	0.450	Yes
Intangibles (Accounts Receivable, Money on Hand)	0.250	No

Source: Property Tax Rates 1998, Kentucky Revenue Cabinet, Department of Property Valuation.

Local Property Tax Rates Per \$100 Valuation, 1998

<u>Taxing Jurisdiction</u>	<u>Real Estate</u>	<u>Finished Goods & Tangibles</u>	<u>Motor Vehicles</u>
<u>County</u>			
Madison County	0.2283	0.2492	0.2480
<u>Cities</u>			
Berea	0.0352	0.0352	0.0505
<u>School Districts</u>			
Berea Independent	0.5420	0.5420	0.5910
Madison County	0.4390	0.4390	0.5580

Source: Property Tax Rates 1998, Kentucky Revenue Cabinet, Department of Property Valuation.

EDUCATION

Primary and Secondary Schools

Public School District Enrollments and Expenditures, 1998-99

	<u>Total Enrollment</u>	<u>Expenditures Per Pupil</u>	<u>Pupil to Teacher Ratio</u>
Berea Independent	1,094	5,752	15.2
Madison County	9,197	5,924	16.4

Note: N/A – Data not available.

Source: Kentucky Department of Education, Office of Curriculum, Assessment, and Accountability.

Transition to Adult Life of High School Graduates, 1996-97

<u>County-wide</u>	<u>Number of Graduates</u>	<u>Percent of Total Graduates (%)</u>
Total High School Graduates	517	
To College	285	55.1
To Vocational/Technical School	12	2.3
To Workforce	180	34.8
To Work & School	19	3.7
To Military	12	2.3
Other	9	1.7

Source: Kentucky Department of Education, Office of Curriculum, Assessment, and Accountability.

Nonpublic Schools, 1999-2000

	<u>Enrollment</u>	<u>Grades</u>
The following schools are in Richmond, Kentucky 15 miles north of Berea.		
Model Lab Elementary	313	PS-5
Model Lab High School	220	9-12
Model Lab Middle School	174	6-8
Richmond Christian Academy	80	PK-8
St. Mark Elementary	200	PS-8

Source: Kentucky Schools Directory 1999-2000, Kentucky Department of Education.

Colleges and Technical Schools

Area Colleges and Universities Within 60 Miles of Berea

<u>Miles</u>	<u>Institution</u>	<u>Location</u>	<u>Enrollment (Fall 1999)</u>
-	Berea College	Berea	1,550
11	Eastern Kentucky University	Richmond	15,188
27	Centre College	Danville	1,022
28	Asbury College	Wilmore	1,329
33	Lexington Community College	Lexington	6,807
33	Transylvania University	Lexington	1,072
33	University of Kentucky	Lexington	23,742
38	Somerset Community College	Somerset	2,407
45	Midway College	Midway	816
46	Georgetown College	Georgetown	1,672
53	Kentucky State University	Frankfort	2,393
54	Union College	Barbourville	855
54	Saint Catharine College	St. Catharine	477
58	Cumberland College	Williamsburg	1,662
60	Campbellsville College	Campbellsville	1,615
Total Enrollment			62,607

Note: Miles are calculated as the straight-line distance from Berea, not road miles.

Source: Kentucky Council on Higher Education.

Kentucky Technical Schools Within 60 Miles of Berea

<u>Miles</u>	<u>Institution</u>	<u>Location</u>	<u>Enrollment (1997-98)</u>		
			<u>Sec</u>	<u>P/S</u>	<u>Total</u>
11	Madison County ATC	Richmond	799	0	799
15	Rockcastle County ATC	Mount Vernon	367	73	440
16	Garrard County ATC	Lancaster	199	0	199
27	Central KY Technical College Danville Campus	Danville	107	125	232
30	Clark County ATC	Winchester	207	2	209
32	Lee County ATC	Beattyville	429	21	450
33	Harrodsburg ATC	Harrodsburg	383	4	387
33	Central KY Technical College Lexington Campus	Lexington	0	1,154	1,154
33	Eastside Center for Applied Technology	Lexington	345	0	345
33	Southside Center for Applied Technology	Lexington	261	0	261
33	Laurel Technical College	London	232	399	631
38	Montgomery County ATC	Mt. Sterling	692	0	692

<u>Miles</u>	<u>Institution</u>	<u>Location</u>	<u>Enrollment (1997-98)</u>		
			<u>Sec</u>	<u>P/S</u>	<u>Total</u>
38	Somerset Technical College	Somerset	2	711	713
39	Casey County ATC	Liberty	709	0	709
41	Clay County ATC	Manchester	248	35	283
45	Corbin ATC	Corbin	265	44	309
46	Central KY Technical College Anderson Campus	Lawrenceburg	0	115	115
50	Breathitt County ATC	Jackson	376	19	395
53	Franklin County Area Vocational Education Center	Frankfort	178	0	178
53	Marion County ATC	Lebanon	501	0	501
54	Knox County ATC	Barbourville	371	32	403
56	Harrison County ATC	Cynthiana	720	5	725
56	Russell County ATC	Russell Springs	414	0	414
58	Leslie County ATC	Hyden	641	15	656
59	Wayne County ATC	Monticello	749	0	749
Total Enrollment			9,195	2,754	11,949

Notes: Kentucky Tech secondary schools (Sec), called area technology centers (ATC), are operated by the Cabinet for Workforce Development and the post-secondary schools (P/S), called technical colleges, are governed by the Kentucky Community and Technical College System (KCTCS). Adult courses may be offered at some secondary technical schools. Miles are calculated as the straight-line distance from Berea, not road miles.

Source: Kentucky Workforce Development Cabinet, KCTCS.

Customized Training

The Kentucky Tech system, through its training and development coordinators, will provide technical assistance and will identify and develop low-cost customized training programs and services for both established and prospective businesses. Businesses wanting to establish a customized training program should contact a Training and Development Coordinator at the Central Kentucky Technical College in Lexington and the Laurel Technical College in London.

Assessment Services

Kentucky Tech Career Connections offers business, education, and government agencies testing packages for evaluating job applicants, selecting employees for promotional consideration and developing training programs within the organization. The Career Connections Assessment Centers serving the Berea area is located at the Central Kentucky Technical College Lexington Campus and at the Laurel Technical College in London.

Adult Education Services

Adult education programs are available to adults who want to develop new academic skills, improve basic skills, or earn a high school equivalency diploma. In Berea, adult basic education and adult literacy classes are administered through the Madison County Board of Education, Madison County Literacy Council and Berea College.

Bluegrass State Skills Corporation

The Bluegrass State Skills Corporation (BSSC) was established in 1984 by the General Assembly of the Commonwealth of Kentucky as an independent, de jure corporation to stimulate economic development through customized business and industry specific skills training programs. The BSSC works with business and industry and Kentucky's educational institutions to establish programs of skills training. The BSSC is attached to the Cabinet for Economic Development for administrative purposes, in recognition of the relationship between economic development and skills training efforts.

The BSSC is comprised of two economic development tools, matching grants and the newly authorized Skills Training Investment Credit Act. The BSSC grant program is available to new, expanding and existing business and industry. Eligible training activities include pre-employment skills training and assessment; entry level, skills upgrade and occupational upgrade training; train-the-trainer travel; and capacity-building. The Skills Training Investment Credit Act provides tax credits to existing businesses for skills upgrade training.

OTHER LOCAL FACILITIES

Local Medical Personnel

Physicians - 25

Dentists - 5

Hospitals

<u>General Hospital</u>	<u>Location</u>	<u>Beds</u>
Berea Hospital, Inc.	Berea	50 acute 65 skilled

Other Medical Facilities and Services

Berea Health Care Center - 84 intermediate-care beds

Berea Rescue Squad

Madison County Ambulance District

Banks and Savings & Loan Associations

Berea National Bank

Community Trust Bank

Cumberland Valley National Bank

Peoples Bank and Trust Company of Madison County

First Star Bank

Newspapers

The Berea Chronicle (weekly)

The Berea Citizen (weekly)

The Berea Register (weekly)

Telephone Service

GTE

RECREATION

The City of Berea provides a variety of public recreational facilities and activities. The city park complex includes a 9,000 square-foot swimming pool complete with a 35-foot water slide, an umbrella fountain, a diving well, a children's pool, and Olympic lanes. Adjacent to this complex are softball/baseball fields, two soccer fields, horseshoes, sand volleyball, blacktop basketball, and shuffleboard. A walking trail encircles the entire complex. Across the street is Memorial Park, which has picnic and playground facilities and a shelter with bathrooms. A daily playground program for youth also is offered during the summer, with weekly special events planned.

Private facilities include a golf course, skating rink, and camping areas. A private athletic club is available in Berea. Facilities include a gymnasium, racquetball courts, and weight room.

Berea has an active senior citizens organization offering a variety of programs including meals, programs, home health care, special activities, and tours. The Intergenerational Center houses one of the most modern programs of its kind. The center has separate areas for the seniors and a head start program. The design allows for interaction among the two groups. In the same general area, Berea College makes available to the public, a walking/running track.

Berea College also offers to the public a wide range of recreational, cultural, and entertainment attractions. Regular student-guided tours of the campus, concerts, and lecture series are offered to the public at no charge. Drama productions and most intercollegiate sports are open to the public. The track and field facilities, baseball/softball and soccer fields, tennis courts, and swimming pool are available for public use with permission. The Rogers/Traylor Art Building offers traveling art exhibits and selections from the college collections which include the Kress Study Collection of Renaissance Paintings and Doris Ulmann photographs. One of the finest collections of fossil, mineral, and gemstone specimens in the state is displayed in the Burroughs Geology Museum. The Appalachian Museum offers exhibits and audio-visual programs depicting the traditional lifestyle and crafts of the Appalachian Southern Highlands. Selections from the Wallace Nutting collection of Early American furniture styles are also on display. The Berea College Crafts program serves to preserve and promote folk art and craftsmanship and comprises woodcraft, broomcraft, weaving, ceramics, and wrought iron arts. Boone Tavern Hotel, owned by Berea College and 80 percent staffed by college students, is noted for its southern charm and excellent food. The college's forest areas total 7,700 acres and include popular hiking trails at Indian Fort Mountain, three miles east of Berea, and Owsley Fork Lake, ten miles east of Berea, which offers fishing and non-motorized boating.

Special events held annually in Berea include the Kentucky Guild of Artists and Craftsmen's spring and fall fairs, Berea Craftspersons Summer Craft Fair, and annual Chamber of Commerce Antique Show and Sale. Berea College sponsors a month-long summer repertory theater program, as well as the annual Traditional Music Celebration, the Mountain Folk Festival, and the Christmas Country Dance School, which features music and dancing and other special events.

Churchill Weavers, the largest handweaving company in the country, is located in Berea. Tours are available through the loomhouse.

Area (within 35 miles)

Richmond, 15 miles north of Berea, offers a variety of cultural, sporting, and recreational activities. Eastern Kentucky University is the center for numerous cultural activities including lectures, theatre productions, art exhibits, ballets, concerts, and sporting events.

The Daniel Boone National Forest, approximately 20 miles southeast of Berea, covers 640,000 acres of timberland in eastern Kentucky. It encompasses much of Kentucky's great beauty and provides a vacation paradise. There are scenic hiking trails, rivers and streams stocked with a variety of fishing, hunting preserves, camping sites, and numerous other natural and historical attractions.

White Hall State Historic Site, 22 miles north of Berea near Richmond, one of the grand estate houses of post-Civil War Kentucky, is the Italianate mansion of Cassius Marcellus Clay, the early abolitionist and politician.

Bybee Pottery, located 25 miles northeast of Berea, is known internationally for its unusual handmade Kentucky pottery. Generations of craftsmen-potters have been creating the Bybee line for over a century. Tours are available.

The spirit of Daniel Boone and his pioneers is reborn at Fort Boonesborough State Park in Boonesboro, 30 miles north of Berea. In the re-created fort, pioneer crafts of the eighteenth century are demonstrated by using functioning antiques from the frontier era. Cabins are furnished as they would have been in the day of Boone and documentary films are presented which depict the struggle of the first Kentuckians to make the Kentucky wilderness a home. A gift shop within the fort offers for sale all the handcrafted items made at the fort. Other recreational facilities and activities of the park include an Olympic-size swimming pool with a modern bathhouse and a modern 187-site camping area, a picnic area, a playground, and miniature golf.

Constitution Square Historic Site, 34 miles west of Berea in Danville, is a reproduction of Kentucky's first courthouse square, including the original 1792 post office which was the first in the west.

APPENDIX - DEFINITIONS

Geographic definition of the labor market area

A county's labor market area is defined as the base county, adjacent counties, and any other major commuting counties. Adjacency is used to define the labor market area primarily because of the small size of Kentucky's counties. The major commuting counties are defined from the point of view of the base county. Major commuting counties are those counties that comprise 90% of the base county's total commuters. The source of the commuting patterns is the 1990 journey-to-work data available from the U.S. Department of Commerce, Bureau of Economic Analysis.

Example – Logan County

To determine the labor market area for Logan County the following steps are taken. First, the counties with workers commuting into Logan county are listed in ascending order (see the table below). The cumulative percent is calculated. Next, all counties that comprise up to 90% of the commuters are included in the labor market area (actually the cut-off will be the county that breaks the 90% threshold – Montgomery County, TN at 92.6% in this case). Although Robertson is not a major commuter county, it is included since it is adjacent. The Logan County labor market is then comprised of the seven bold-faced counties in the table below.

Labor Market Area – Logan County (Example Only)				
Adjacent to Logan	Commuter County	Commuters into Logan	Percent of Total Commuters	Cumulative Percent
Y	Todd	385	24.4%	24.4%
Y	Warren	377	23.9	48.4
Y	Muhlenberg	365	23.2	71.5
Y	Simpson	162	10.3	81.8
Y	Butler	116	7.4	89.1
	Montgomery, TN	55	3.5	92.6
	Christian	36	2.3	94.9
	Sumner, TN	35	2.2	97.1
Y	Robertson, TN	25	1.6	98.7
	Davidson, TN	20	1.3	100.0
<i>Total Commuters into Logan County</i>		<i>1,576</i>	<i>100.0</i>	

Source: U.S. Department of Commerce, Bureau of Economic Analysis. Regional Economic Information System, CD-ROM. August 1997.

Potential Labor Supply

The potential labor supply is an estimate of those persons not classified as in the labor force (not employed and not unemployed), but who want a job. The assumption is that people not in the labor force at the local level would like a job at the same rate as the nation. The U.S. Department of Labor, Bureau of Labor Statistics provides national, yearly estimates of the percent of the people not in the labor force who want a job. This percent is applied to the county-level number of people not in the labor force.

Underemployed

Wholesale/retail trade and non-professional services have historically paid low wages. The assumption is that workers in these industries would take higher paying jobs if they were available. Non-professional services excludes Miscellaneous Repair Services (SIC 7600), Health Services (SIC 8000), Legal Services (SIC 8100), and Engineering and Management Services (SIC 8700).

Total Available Labor

Total available labor is the sum of the number of unemployed, potential labor supply, and underemployed. Please note that the number of unemployed is the only generally accepted measure of labor availability. The other concepts are weaker measures and should be used with caution.