

Winter 2008

## South Union Messenger (Winter 2008)

Kentucky Library Research Collections  
Western Kentucky University, [spcol@wku.edu](mailto:spcol@wku.edu)

Follow this and additional works at: [https://digitalcommons.wku.edu/su\\_messenger](https://digitalcommons.wku.edu/su_messenger)



Part of the [Christian Denominations and Sects Commons](#), and the [United States History Commons](#)

---

### Recommended Citation

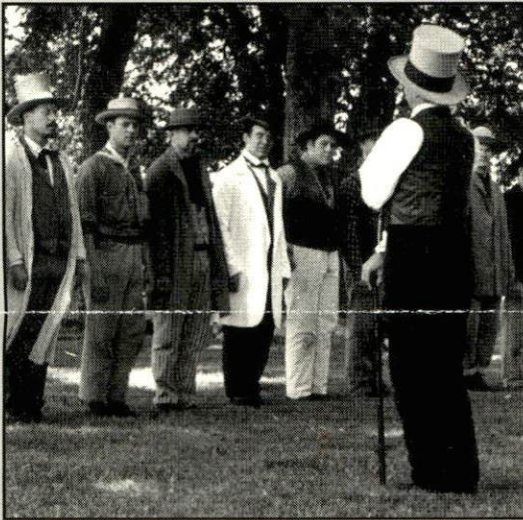
Kentucky Library Research Collections, "South Union Messenger (Winter 2008)" (2008). *South Union Messenger*. Paper 43.  
[https://digitalcommons.wku.edu/su\\_messenger/43](https://digitalcommons.wku.edu/su_messenger/43)

This Newsletter is brought to you for free and open access by TopSCHOLAR®. It has been accepted for inclusion in South Union Messenger by an authorized administrator of TopSCHOLAR®. For more information, please contact [topscholar@wku.edu](mailto:topscholar@wku.edu).

# SOUTH UNION MESSENGER

S H A K E R M U S E U M A T S O U T H U N I O N

## South Union Seminar: April 25 & 26 “Are These Not Perilous Times”



*Men participate in a Civil War reenactment hosted at the Shaker Museum on April 1, 2006.*

This year's South Union Seminar will focus on the Civil War and its impact on the Shakers. The title of the event, “Are These Not Perilous Times,” comes from the manuscript diary of Eldress Nancy Moore, a detailed account of the war from a Shaker woman's perspective.

The Seminar will feature readings from this document, as well as other journal references to the period between 1861 and 1865. A manuscript copy of a letter written from the South Union Shakers to President Abraham Lincoln will also be on display during the weekend.

Other highlights include presentations by noted speakers, a new exhibit on the Civil War, a period Shaker meal, and other surprises. This event coordinates with the bicentennial celebration of Lincoln's birthday this year and in 2009. Please join us!

### INSIDE THIS ISSUE

Fall Events Review	2
Recent Happenings	3
Events 2008	4
Special Thanks	5
Ky. Colonels Grant	6
Acquisitions/ Tributes	7
South Union Bicentennial Thank You	8

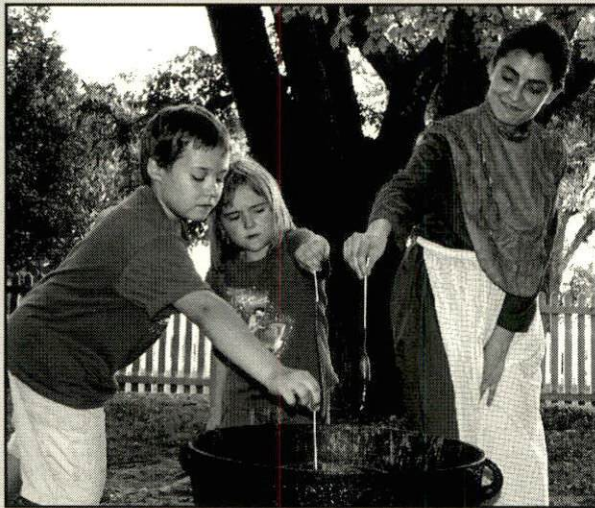
**RSVP: [shakmus@loganetele.com](mailto:shakmus@loganetele.com)**

800-811-8379

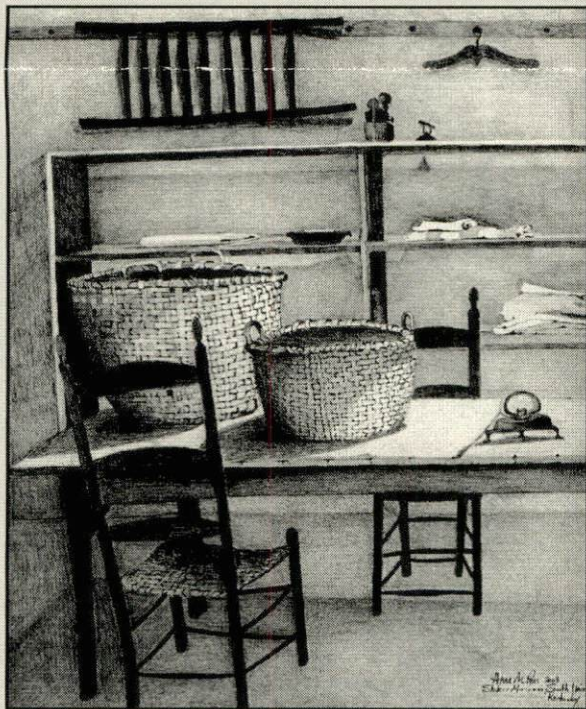
**PO Box 177 Auburn, KY 42206**

[www.shakermuseum.com](http://www.shakermuseum.com)

## FALL EVENTS REVIEW 2007



*Adriana Dela Cuadra (right) demonstrates candle dipping during Farm Day 2007. Children and adults enjoyed practicing daily Shaker chores.*



*Creative drawing workshop participant Anne Ross, a Nashville, TN, resident, completed this graphite on paper piece Dec. 8. The drawing depicts a laundry display located on the third floor of the 1824 Centre House.*

### Farm Day

In spite of the unseasonably hot temperatures, more than 300 adults and children attended Shaker Museum's Farm Day Oct. 6. Attendees enjoyed the demonstrations of shoemaking, meat smoking, cider pressing and old-fashioned wet plate photography. The Shaker Museum offers a special thanks to all the volunteers who made the event a success. Without the generous donation of volunteers' time and talents, the Shaker Museum could not offer such educational opportunities. Generous financial support from Just Piddlin' Farm Pumpkin Patch, Logan Telephone Cooperative and the Kentucky Historical Society is appreciated.

### A Shaker Breakfast

The 1869 Shaker Tavern Bed & Breakfast hosted a full house for four seatings of A Shaker Breakfast Nov. 3 & 10. Guests enjoyed a breakfast from the journals of Civil War-era Shakers, including: sausage, asparagus, fried chicken, biscuits, sweet potatoes and apple pie.

### Christmas at Shakertown

Sponsored by Scarbrough & Barton, CPAs and Auburn Banking Company, Christmas at Shakertown welcomed over 1,000 shoppers to the Preview Party Nov. 30 and the Open House market Dec. 1. Held in the Centre House, shoppers enjoyed the antiques and crafts of local vendors. The Preview Party raised more than \$550 and 200 bags of canned food items. The donations were distributed to needy families by the Auburn Fire Department. The Logan Friendship League provided a popular hot lunch during the Open House.

### Creative Drawing Workshop

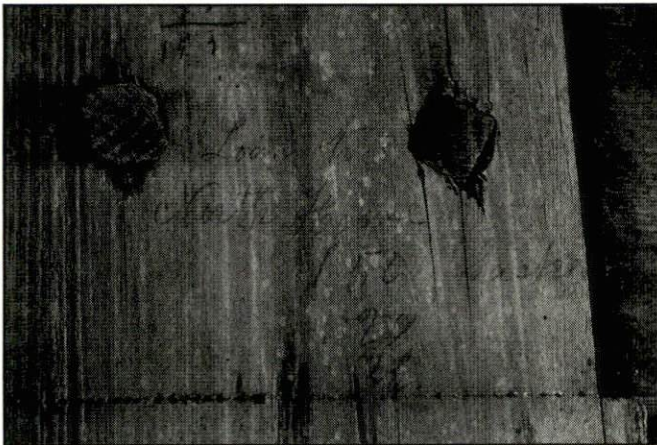
The Shaker Museum welcomed Adairville, Ky., resident artist Charles Brindley as he directed a creative drawing workshop Dec. 8. Brindley taught participants how to achieve proportion, perspective and color dynamics on-site. Participants worked directly from the architecture and daily items on location at the Centre House including: oval boxes, chairs, tools and the structure of the Centre House itself.

## SHAKER BARN 'MOTHBALLED' FOR THE WINTER

The 1875 Grain Barn has literally been wrapped in a blanket for the winter months until work resumes in the spring. A layer of insulation has been temporarily attached to portions of the structure that do not have weatherboarding in place. Eventually, newly milled clapboards will replace the insulation. All of the additions made to the original barn in the 1920s and 1930s have been stripped away, a set of concrete piers have been poured to stabilize the building, and missing portions of the stud wall have been replaced. A new metal roof has also been installed.

A number of finds in the barn have provided information about the building's history. Original architectural details from the barn, removed when the additions were made in the 1920s and 1930s, have been discovered "re-used" throughout the building. A great number of artifacts from other portions of the village have also been found, including handcrafted pickets from the original village fences, pieces of a Mochaware pitcher, remnants of a small pistol, and a great number of stone elements from the 1818 Meeting House, which was demolished in 1926.

Recently, workers found an inscription on one of the posts in the barn that read "Loan to North Family, 150 sacks." Close examination of the brick pit that housed the barn's scales revealed a child's shoeprints in the mortar that capped the top of the wall. Small pieces of evidence like these help form a better picture of the past.



*"Loan to North Family, 150 sacks" is the inscription that workers discovered on a post in the 1875 Grain Barn at South Union.*



*A child's shoeprints in the 1875 Gran Barn mortar adds a human element to the restoration project.*

# EVENTS 2008

## *Seminar*

*"Are These Not Perilous Times?"*

April 25-26

1824 Centre House

## *Hoedown at Shakertown*

September 13

Meeting House Lot

## *Farm Day*

October 18

1824 Centre House

## *Breakfast at Shakertown*

November 1 & 8

1869 Shaker Tavern

## *Christmas at Shakertown*

### *Preview Party*

December 5

1824 Centre House

## *Christmas at Shakertown*

### *Holiday Market*

December 6

1824 Centre House

## SOUTH UNION GOES GREEN

When the Shakers first came to southern Kentucky in 1807, their settlement was in a part of Kentucky known as "the Barrens." Hundreds of acres of grass and very few trees characterized the landscape surrounding South Union. The lack of building material made the construction of log or frame buildings difficult until the Shakers began to purchase tracts of timber north of the village.

Thanks to a federal government program called CREP, much of the South Union landscape will soon be covered with native grasses again. The Conservation Reserve Enhancement Program is a voluntary land retirement program that helps agricultural producers protect environmentally sensitive land, decrease erosion, restore wildlife habitat, and safeguard ground and surface water. A portion of the museum's 500-acre farm will be dedicated to warm season grasses for the next 15 years, a situation that not only has positive environment ramifications but financial benefits as well. Several of the farmers who own land around the museum property are also signing up for the CREP program. Much of the landscape in the area will soon look much like it did when the Shakers first came to Kentucky. Here's historic preservation and environmental conservation working hand in hand!

# SPECIAL THANKS

## Contributions

Dale & Mary Spencer (*In Memory of Ed Disch*)

Joseph & Dorothy Jones (*In Memory of Rose Mary Lawson*)

Dale & Mary Spencer (*In Memory of Rose Mary Lawson*)

George & Darlene Kohrman (*In Memory of Rose Mary Lawson*)

Sharon Edwards

Joseph & Dorothy Jones

Grover & Mary Corum

Edith S. Bingham

The Atticus Trust

## New Members

Donna Hill

Dawna A. Young

Mark Hardison

## Membership Renewals

Christopher & Carrie Barnette

Mary Lucy Franklin

Wayne & Dottie Metcalf

Grover & Mary Corum

Ward & Jane Coleman

Mr. & Mrs. John D. Cole

Vivian Stephens

Alan & Adrienne Dieball

Ralph & Romanza Johnson

Robert Martin

Rafael Perez

Barbara Strickler

Jackson & Betty Kesler

Col. Robert & Cora Spiller

Preston & Margy Thomas

Annie F. Duncan— Ponvert

Clark & Peggy Carthrae

Mr. & Mrs. Dennis Newberry III

Thomas & Rhonda Dotson

William & Janet Wade

E.M. Bear & Elizabeth Woodworth

Lee Young

Julia Meadows

Stanley & Edwina Strickler

Trent Spurlock

Dale Covington

Susan Jackson Keig

Nancy Hillenburg

Jim & Sarah Riley

John Cain III

Sally Ann Strickler

Karl & Marcia Federer

Salli LaGrone

Ruth Warner

Robert & Lillian Sharp

Max & Sue Brail II

Joseph & Colleen Kresovich

George & Darlene Kohrman

Raymond & Ann Cravens

Dale & Mary Spencer

Jon & Darla Barrow

Nancy Baird

W. Clark Conn

Edie Bingham

Sharon Crawford

John & Jocelyn Knepler

Flo Morse

Deborah Widick

Ernie & Joan Dewald

Gordon Newell

Joseph Hays

Peggy Boaz

Maggie Selvidge

Naomi McAfee

Eugene & Jo Bethel Sparling

Kathy Wise-Leonard

John & Carol Rochford

Brian Lankford

Ivor & Joan Carter

Sue Carol Browning

Mike & Leigh Harper

Bob Clendennen

Riley White, Inc.

Logan County Chamber of Commerce

## Sponsorships

### **Farm Day**

Just Piddlin' Farm Pumpkin Patch

Logan Telephone Cooperative

Kentucky Historical Society

### **Christmas at Shakertown**

Auburn Banking Company

Scarborough & Barton, CPAs

## GRANT FROM THE HONORABLE ORDER OF KENTUCKY COLONELS

The 1846 Ministry Shop was first opened to the public in 2003, but the restoration was not quite complete. The nine windows in the building were originally flanked by working louvered shutters. Four sets of shutters had survived the Ministry Shop's 157 years, but they were not sturdy enough to withstand the wear and tear of daily use. It was decided that the original shutters should be mounted "closed" on the four windows on the back of the building for the sake of preservation. This also allowed us to control the light that flooded the rooms through windows that supplied no UV protection.

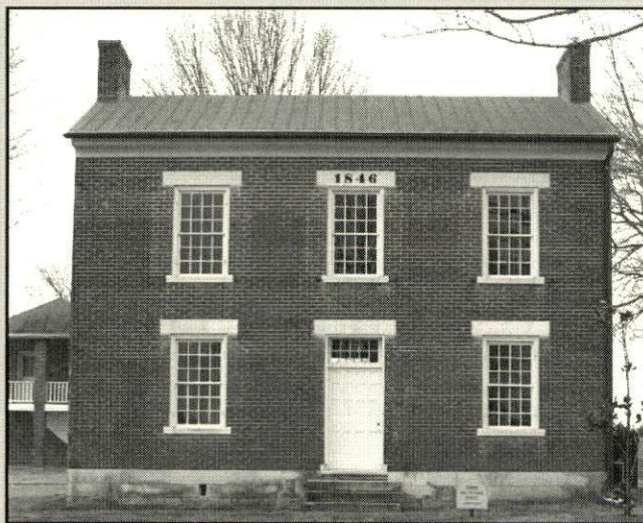
The five windows on the north façade of the Ministry Shop were left "shutterless" as the museum waited for funds to have working reproductions made. A contribution from long-time supporters John and Linda Tanner initiated a drive to have new shutters built. Now the project will finally become a reality, thanks to a \$5,000 grant from the Honorable Order of Kentucky Colonels. The shutters are currently being made to match the originals and will be mounted on the north façade of the building using some of the original hardware.

Paint analysis by Susan Buck of Historic Paint Services provided information that the shutters on the Ministry Shop were painted a dark green. The first generation paint layer on one of the original louvers consisted of Prussian blue and yellow ochre particles bound in linseed oil. A match will be made using modern paint.

Many thanks to John and Linda Tanner and to the Honorable Order of Kentucky Colonels for funding this restoration project.



*Ministry Shop with shutters, ca. 1930*



*Ministry Shop without shutters, 2008*

## SHAKER MUSEUM ACQUISITIONS

**Shaker Theology**, 4<sup>th</sup> edition of South Union Elder Hervey Eads book with manuscript dedication, "Eldress Harriet Bullard. Present from Elder Hervey L. Eads of South Union, Ky., 1887."

~ Donated Anonymously

**Shaker Theology**, 4<sup>th</sup> edition of South Union Elder Hervey Eads book with manuscript dedication, "Elder Giles B. Avery. Present from Elder Hervey L. Eads of South Union, Ky., July 16, 1887."

~ Donated Anonymously

**Wantage Rod**, cherry, rule for measuring wine in a barrel, made at South Union, ca. 1820. "South Union" stamped on two sides, "Wine" stamped on another side, "Yard" stamped on another. South Union made and marketed a variety of measuring rules during the first half of the 19<sup>th</sup> century.

~ Purchased with Acquisition Endowment Funds

## IN MEMORIUM

The Shaker Museum recently lost two long-time friends, Richard ~~Cox~~ of Auburn, Ky., and Jim Harmon of Springfield, Ky. Richard Cox was a member of the museum's board of directors for nearly 20 years and spent countless hours volunteering at South Union during the 1970s and 1980s. Jim Harmon was a crafts demonstrator for the museum during the Shaker Festival and other events in the 1990s. Both men made an impact on South Union and will be missed.

## TRIBUTE TO MIKE HOSSOM

The Shaker Museum family extends its gratitude and wishes of prosperity to Mike Hossom, a long-term employee of the Shaker Museum at South Union, as he leaves the museum for other endeavors.

During his time at the Shaker Museum, Mike worked as a docent and developed various computerized documents including Museum Photo Guide used for tours and several demonstration handouts. Mike and his wife, Sam, have demonstrated spinning and weaving at Shaker Farm Day for over a decade.

*AT RIGHT: Mike Hossom demonstrates spinning at Farm Day 2007.*







SHAKER  
MUSEUM  
AT SOUTH UNION

NONPROFIT ORGANIZATION  
U.S. POSTAGE  
PAID  
SHAKERTOWN AT  
AUBURN, KENTUCKY 42206  
PERMIT NO. 3

shakmus@logantele.com • 800-811-8379  
P.O. Box 177, Auburn, KY 42206

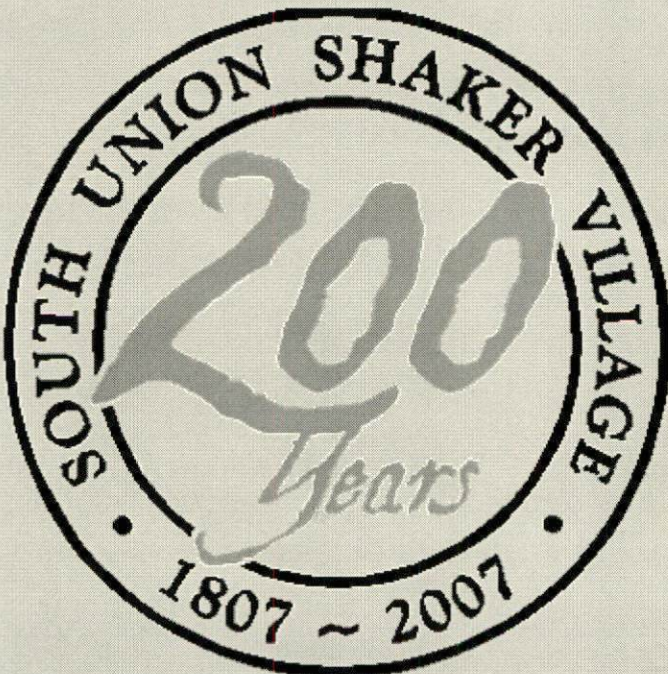
**ADDRESS SERVICE REQUESTED**

Col. & Mrs. Robert Spiller  
1056 Oakland Road  
Oakland, KY 42159

42159+6847-36 R001



## SOUTH UNION BICENTENNIAL THANK YOU



Thank You for making the Shaker Museum at South Union's bicentennial celebration a success.

During 2007, the Shaker Museum hosted entertaining special events, educational workshops and fun school and group tours.

With your loyal support, the Shaker Museum will continue to provide top quality experiences for community members and visitors from around the world. We look forward to serving you in 2008.

Visit us soon!