

April 2024

## Guest Editorial

Phyllis Ann Solari-Twadell PhD, RN, MPA, FAAN  
*Loyola University Chicago*

Follow this and additional works at: <https://digitalcommons.wku.edu/ijfcn>



Part of the [Community Health and Preventive Medicine Commons](#), [International Public Health Commons](#), [Other Nursing Commons](#), and the [Public Health and Community Nursing Commons](#)

---

### Recommended Citation

Solari-Twadell, Phyllis Ann PhD, RN, MPA, FAAN (2024) "Guest Editorial," *International Journal of Faith Community Nursing*: Vol. 9: Iss. 1, Article 1.

Available at: <https://digitalcommons.wku.edu/ijfcn/vol9/iss1/1>

This Editorial is brought to you for free and open access by TopSCHOLAR®. It has been accepted for inclusion in International Journal of Faith Community Nursing by an authorized administrator of TopSCHOLAR®. For more information, please contact [topscholar@wku.edu](mailto:topscholar@wku.edu).

---

## Guest Editorial

Cover Page Footnote

None

Guest Editorial: Journal of Faith Community Nursing International- Special Issue

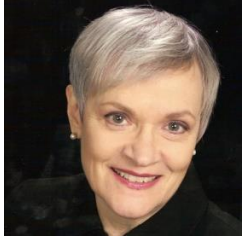
This special issue of the *International Journal of Faith Community Nursing* is a compilation of manuscripts resulting from the work of Faith Community Nurses (FCNs) during the onset and course of the 2020 pandemic. COVID-19 was and still is a global experience of infectious disease directing day to day life. Individuals' lives changed with the loss of loved ones, restrictions on personal freedoms, and learning new ways to connect with family and friends safely. Likewise, institutions including faith communities were deeply affected. The vitality and life of the faith community continues to be challenged by the COVID-19 pandemic, which impacted their ministries, particularly the faith community nursing ministry. In the disruption created by COVID-19, only 13 percent of Americans noted that they were attending services in their faith communities (Norley, 2022). Although individuals maintained their religious identity through the pandemic, attendance did not return to pre-pandemic levels in faith communities when restrictions on attendance were lifted. The lack of church participation affected the economics, services and ministries offered by the church as well as the ministry of faith community nursing.

“Practice Matters” presents a collaborative approach used by a health system, faith communities, and faith community nurses for safely reopening faith communities once isolation restrictions were lifted. This article provides practices that can be replicated in the future if needed to restore participation in religious services within a faith community.

The articles in this issue offer a variety of responses to differing circumstances brought on by the COVID-19 pandemic. These demonstrate the perspectives of FCNs in countries outside the U.S. The United Kingdom is represented through the sharing of data collected through quarterly reports to the “parish nurse” about experiences with COVID-19. The perspective from Germany is also reflected upon and describes how the economic impact of COVID-19 is still being felt by faith communities and the “Vis a Vis” parish nurse ministries. Grant procurement and the disruption posed by COVID-19 is presented in the final article relating a picture of how normal operations were affected and goals were maintained during this challenging time.

In closing, we also acknowledge the war in Croatia and how this conflict affected faith communities, faith community nurses, and the way in which they supported their people. In the “Moments for Reflection,” the psalms are creatively used to engage people in the realities of pain, disorientation, and faith.

I hope you glean knowledge from your reading that will be of benefit to you and to your faith community nursing ministry.



P. Ann Solari-Twadell, Guest Editor

## References

Nortey, J. (2022). More houses of worship are returning to normal operations, but in person attendance is unchanged since fall. Retrieved from <https://www.pewresearch.org/fact-tank/2022/03/22/more-houses-of-worship-are-returning-to-normal-operations-but-in-person-attendance-is-unchanged-since-fall>.