

8-1999

South Union Messenger (August 1999)

Kentucky Library Research Collections
Western Kentucky University, spcol@wku.edu

Follow this and additional works at: https://digitalcommons.wku.edu/su_messenger

Part of the [Christian Denominations and Sects Commons](#), and the [United States History Commons](#)

Recommended Citation

Kentucky Library Research Collections, "South Union Messenger (August 1999)" (1999). *South Union Messenger*. Paper 95.
https://digitalcommons.wku.edu/su_messenger/95

This Newsletter is brought to you for free and open access by TopSCHOLAR®. It has been accepted for inclusion in South Union Messenger by an authorized administrator of TopSCHOLAR®. For more information, please contact topscholar@wku.edu.

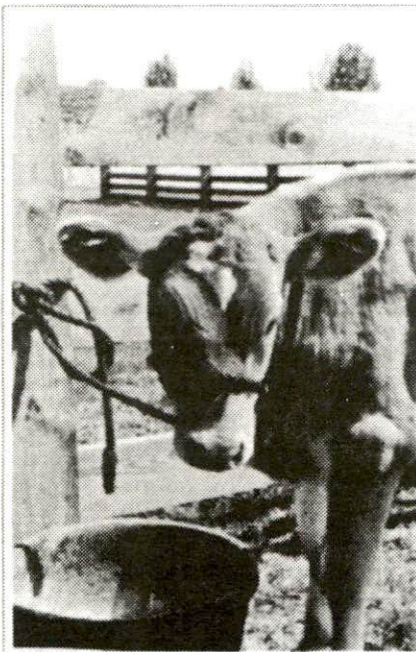


South Union Messenger

Newsletter for the Friends of the Shaker Museum at South Union, Kentucky
August 1999

It's Harvest Time at South Union!

Shelling corn, cutting fodder, smoking meat, making candles, and rendering lard. All in a day's work, right? These are just a few of the many daily tasks that 19th century farmers were required to perform. While considered curiosities by most of us today, these chores were once necessary for a family's comfort and survival. The South Union Shakers were no exception to this fact of life. The six thousand acres that the Shakers called home required constant maintenance and hours of hard work. The lack of mechanization in the first half of the 19th century made the task even more daunting.



We are expecting big things from our second annual **Shaker Farm Day**, scheduled for September 11. Last year marked something of a milestone for the museum. Not only was it the inaugural year for the event, but for the first time in well over one hundred years the arch kettle in the 1847 Steam House was fired. We have to thank interpreter Mike Sisk, who undoubtedly had one of the hottest jobs--"steaming" cow feed all day!

We also want everyone to come this year and say hello to "Sallie," a newcomer to South Union. She will be providing milk for the sisters in the dairy and her calf will also be in tow. Roy's Bar-B-Q will be on the grounds serving southern Kentucky barbecue and fried pies, so be sure to bring a hearty appetite. If anyone is interested in helping with Farm Day, or any other special event, feel free to call or write the museum. We will not hesitate to put your talents to good use! We invite everyone to come out and help us welcome the fall season at South Union.

~~~~~



Last minute touches are made as guests begin to arrive for the 1999 gala, "An Evening in Shakertown"

### *Welcome New Members*

Reid & Margaret Taube, Santa Claus, IN

Thomas C. Kish, Louisville, KY

Mr. & Mrs. Bruce Dobie, Nashville, TN

Margaret L. Price, Nashville, TN

Phillip & Mitsy Clendenin, Bowling Green, KY

Mr. & Mrs. John W. Stone III, Nashville, TN

### *Thank You for Your Contributions*

Dory Hudspeth, Alvaton, KY for secondary library materials

Dick & Cindy Downey, Bowling Green, KY for general support

Irene's Antique Gallery, Elizabethtown, KY for Southern Furniture Symposium underwriting

Col & Mrs. Robert E. Spiller, Oakland, KY for Southern Furniture Symposium underwriting

~~~~~

From the Board of Directors

We are nearing the end of another campaign to purchase land that is so vital to the protection and preservation of the South Union historic site. The past few years have been somewhat mind boggling as two relatively large and very critical parcels of land have become available. So many changes are taking place at South Union, and many of the items on the "wish list" in our long-term plan are becoming a reality. On behalf of the Board, I want to thank our members for the overwhelming support you have provided. South Union is very lucky to have such a dedicated and generous membership.

South Union is tremendously fortunate to also have such a talented and dedicated staff. The Board owes a giant debt to Tommy, Saddler and all of the staff for the energy, direction, and leadership they have provided. They are both the stability and the driving force behind the incredible growth the museum has realized. Finally, I must thank Mrs. Edie Bingham and all the members of our Advisory Board for the leadership, focus, and generosity during our fund drive.

I realize that my "thank you list" could go on for several pages if I included everyone who has contributed to South Union in one way or another. Your gifts are greatly appreciated and the site that you are helping to develop and preserve will be a lasting gift to the many generations of people who will come to experience the beauty of the land, architecture, and artifacts. A complete list of all contributors to *Buying Back the Shaker Farm* will be published in the next newsletter.

Please keep in mind that as South Union grows, so do our needs for operational funds. I hope that all who have been generous in their giving will continue to contribute. I encourage all of our members to give to the extent you can. Please remember, no gift is too small. If you know family members or friends who might be interested in becoming members at South Union, be sure to ask them to call or visit the museum.

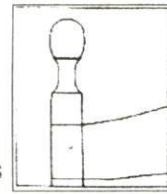
I want to mention that the Board of Directors is also experiencing some growth and changes. This year, six of our members will be leaving the Board to get a much deserved rest. Grover Corum, Gran Clark, Charlie Ray, Carol Dyche, Sally Ann Strickler, and Alicia Stivers will all be stepping aside in December 1999. These individuals are long time members of the Board and their contributions have been enormous. It would be difficult to ever thank them enough. The Board welcomes Beth McKinney, Laura Caswell, Gene Crume, and Diane Howerton to our "ranks." We all look forward to their ideas and talents. I hope to see many of you at the upcoming events at the museum this fall and, again, thank you!

Skip Cleavinger, President
Shaker Museum at South Union
Board of Directors

Recent Acquisitions

Straight Chair, South Union, ca. 1830. Classic Type B chair with evidence of two different paint colors, salmon and yellow ochre. Room number "18" stamped on both front posts.

.....purchased with acquisition endowment funds



Parlor Suite, ca 1900. Walnut, upholstered set including settee and three chairs for use at the Shaker Tavern Bed & Breakfast.

.....purchased with acquisition endowment funds

Southern Furniture Symposium Scheduled for October 1-2

In 1994 the Shaker Museum at South Union hosted its first Southern Furniture Symposium. This educational forum was developed to study furniture made by the Kentucky Shakers, comparing it with that made in the regions surrounding both villages. The success of the first event led to a second Symposium in 1996. Since that time furniture scholars have had a better grasp on the form and style common to Kentucky Shaker furniture. Research stimulated by the event has led to the discovery that South Union and Pleasant Hill furniture does relate very closely with the furniture that was being made by their non-Shaker neighbors, producing a "southern" Shaker style unlike that found in other Shaker villages.



On October 1-2, the museum will present its third SFS, featuring presentations by leaders in the field of southern material culture, including keynote speaker, Ronald Hurst, Chief Curator and

Vice-President of Colonial Williamsburg. An exhibit will also open in conjunction with the event, featuring forty pieces of antebellum furniture and seventy-five pieces of pre-Civil War silver by Kentucky and Tennessee makers. Examples of South Union and Pleasant Hill furniture will also be included.

A registration form may be found in the newsletter if you would like to attend. Seating is limited so make your reservation as soon as possible. If you are unable to attend the Symposium, the exhibit will be in place until November 21. An exhibit catalog will be available in the Museum Shop on October 1. Exhibit catalogs from the 1996 southern furniture exhibit are also available, as are a limited number from the 1994 exhibit.

Thank You Recent Contributors to "Buying Back the Shaker Farm"

Fundraising Drive Goal: \$585,000

Balance Yet to Raise as of 7/26/99: \$137,600

William B. Simpson, Bowling Green, KY
NASCO, Bowling Green, KY
Dollar General Corporation, Goodlettsville, TN
Sally Ann Strickler, Auburn, KY
Alicia Stivers, Bowling Green, KY
Carolyn Moreland, Franklin, KY
Grover Corum, Auburn, KY
Carolyn Garrett, Auburn, KY

Charlie Ray, Russellville, KY
Skip Cleavinger, Bowling Green, KY
Mark Reynolds, Russellville, KY
Colonial House, Auburn, KY
Dale Calrk, Russellville, KY
Ray Clark, Russellville, KY
Allison Fuqua, Russellville, KY
Mike Robbins, Nashville, TN

Programming Notes - Saddler Taylor

Summer has hit hard at South Union. We know how Elder Harvey felt when he noted in the Centre Family journal that it was "104 degrees in the shade!" We can only hope for cooler temperatures as

September approaches. Our second annual **Shaker Farm Day** is starting to take shape. Scheduled for September 11, the event promises to be even bigger than last year. We are pleased to welcome two new craftspeople, Jerry and Sandy Martin, to the fold.

Living in Woodbury, Kentucky, Jerry and Sandy are veterans of the living history field. Specializing in 18th and 19th century demonstrations, Jerry is both a blacksmith and an accomplished carpenter while Sandy is a talented candle maker.



Although it is only August, planning for the "Christmas in the Kitchen" student program has begun. To my pleasant surprise, teachers have already called to reserve tour slots! Most of the summer has been spent developing ideas and tracking down new period kitchen gadgets for the students to enjoy. If I learned one thing during last year's program, it's that children love to eat! The fresh bread and apple butter were a treat for all. We might serve something this year that will tease the sweet tooth a little more. As always, your support is crucial to the success of the educational programming at South Union. A list of items and materials needed for the "Christmas in the Kitchen" program will be included in the next newsletter. While most of the items might seem insignificant and trivial, donations of such a nature are vital and always appreciated. We are looking forward to an exciting fall season!

A Word from the Director - Tommy Hines

We are closing in on our deadline for "Buying Back the Shaker Farm." Since September 26, 1997 the museum has received, in donations and pledges, \$448,000.00 toward the purchase price of the 140-acre farm just east of the Centre House. At this writing, there is still a balance of \$137,000.00 to be raised before September 26, 1999. We will be dashing to find additional resources over the next seven weeks in order to meet our goal of \$585,000.00. In our November newsletter, we will publish a list of all those who have so generously contributed toward this effort. Contributors who gave at least \$3,000.00 will receive a mock deed for their acre of Shaker land.

"An Evening in Shakertown," South Union's annual gala fund-raising event was held on June 12 with great success. As always, there were nearly one hundred volunteers giving of their time and talent to the planning and preparation of the gala. At the helm this year was Mrs. Randall Epley, who chaired the event with style and flair. She made the process a great pleasure and we all wish to express our sincere thanks for her very successful efforts. A dinner in Mrs. Epley's honor was given by the Board of Directors at the Shaker Tavern on July 26.

Thanks so much to all of you who have written letters to Dan Cherry regarding the proposed airpark development at South Union. There have been some very convincing letters submitted! We will keep you posted as to the progress of the site selection, hoping that the 2,500 acre facility will be as far from South Union as possible.

I am sure that most of you have heard the sad news of Randy Folger's death in an automobile accident in July. If you have visited the Shaker Village of Pleasant Hill during the past decade, you probably had the opportunity to hear one of his marvelous music performances in the meeting house. Randy worked tirelessly to preserve and perform the music of the western Shakers, always doing so with a kind word, an infectious smile and a gentle heart. He will be terribly missed by those who knew him and by the thousands who had the privilege of hearing him sing. Our prayers go out to Randy's family and to his close friends and colleagues at Pleasant Hill.

The South Union Messenger is published by the Shaker Museum at South Union.

For more information contact the museum at:

P.O. Box 30

South Union, Kentucky 42283

Phone: 270-542-4167 Fax: 270-542-7558

E-mail: shakmus@logantele.com Webpage: <http://www.logantele.com/~shakmus/>



SHAKER MUSEUM AT SOUTH UNION

South Union, Kentucky 42283



Jonathan Jeffrey
1338 College St.
Bowling Green, KY 42101

Upcoming at the Shaker Museum

September 11

Shaker Farm Day

In its second year, Shaker Farm Day will recreate the atmosphere of a 19th century farm community with a wide variety of living history demonstrations. Fee: members free, non-members \$5.00 per adult, \$1.00 per child (6-12 years). Time: 9:00am - 4:00pm.

October 1-2

Southern Furniture Symposium

A biannual event featuring presentations by noted scholars in the field of southern antebellum material culture. Fee: \$55.00 prior to Sept. 15, \$70.00 thereafter. Fee includes Friday evening meal, light breakfast and lunch on Saturday.

December 3-4

Christmas at Shakertown