

Western Kentucky University

TopSCHOLAR®

University Organizations

WKU Archives Records

12-1995

UA66/14/4 Kentucky Partnership Newsletter, Vol. II, No. 9

Kentucky Partnership for Farm Family Health & Safety

Follow this and additional works at: https://digitalcommons.wku.edu/univ_org



Part of the [Agricultural Education Commons](#), [Community Health and Preventive Medicine Commons](#), [Occupational Health and Industrial Hygiene Commons](#), and the [Public Health Education and Promotion Commons](#)

This Newsletter is brought to you for free and open access by TopSCHOLAR®. It has been accepted for inclusion in University Organizations by an authorized administrator of TopSCHOLAR®. For more information, please contact topscholar@wku.edu.

MEMBERSHIP UPDATE

The following families/organizaations have pledged their support for The Kentucky Partnership through their recent membership. We sincerely appreciate their support and welcome their suggestions and input as we work together to improve the health and safety of farm families.

Individual Memberships

Joe Frank Duncan
Beverly Graham

Family Memberships

Melinda and Daniel Parks
Susan and Gordon Jones
Janice and Don Williams

Organizational Membership

Sally-Anne Downes
Olds College
Olds, Alberta Canada

UPCOMING EVENTS

January 8, 1995: The Annual Meeting for all members of The Kentucky Partnership for Farm Family Health and Safety will be held at 6:30pm at the L.D. Brown Agricultural Exposition Center on WKU Farm in Bowling Green, Kentucky. Call 502-745-6328 for more details.

Susan Jones, Regional Coordinator
The Kentucky Partnership for Farm Family Health and Safety, Inc.
WKU Box 8266 1 Big Red Way
Bowling Green, KY 42101-3476
Phone: (502-745-3213 or 745-6328 Fax: 502-745-3392

ADDRESS CORRECTION REQUESTED--DO NOT FORWARD

Board of Directors

Angela Vaughn, President	Kristin Smith, Vice President
Theresa Lowe, Treasurer	Peggy Tucker, Secretary
Jan Akin	Faye Alford
Gail Ballance	Nancy Bunton
Norma Cohron	Linda Dickerson
Elizabeth Hawkins	Lori Hughes
Vivian McClellan	Debbie Vernon
Elizabeth Westbrook	

*There is no time
more fitting to say
"Thank You"*

*to all our friends & supporters
and to wish you a
Happy Holiday Season
and a New Year
of health, happiness
and prosperity*

THE KENTUCKY PARTNERSHIP
FOR FARM FAMILY HEALTH & SAFETY, INC.

NON-PROFIT
ORGANIZATION
U.S. POSTAGE PAID
BOWLING GREEN, KY
PERMIT NO. 398



THE KENTUCKY PARTNERSHIP FOR
FARM FAMILY HEALTH AND SAFETY, INC.

NEWSLETTER

Vol. II, No. 9

December

1995

The Kentucky Partnership is a not-for-profit community based organization focused on bringing together farm women, their families and their communities to improve the health and safety of Kentucky's farm families.

PRESIDENT'S PEN

It's hard to believe the year is almost over and another planting season has begun in the fields and with The Kentucky Partnership.

The annual meeting for The Kentucky Partnership will be January 8th. (Call the office at 502-745-6328 for more details). At this meeting the 1996 Board of Directors, Stakeholders and program status will be discussed.

I'm not sure what the statistics on farm injury are for 1995, but locally the number seems to be up. Please urge your neighbors, family and friends to become more aware of the safety and health issues of farming by attending meetings. If you would like more information about a certain safety or health issue pertaining to farming, please call The Kentucky Partnership.

Another reminder--it's time to renew your membership or better yet JOIN. Remember, we are a not-for-profit organization in need of your support.

Be careful and stay safe,

Angela Vaughn

NEWSLETTER SURVEY

Please Share Your Opinion!!!

How often are you sincerely asked to share what you think??? Here's your chance to sound off!!! Please take a few minutes to complete and return the enclosed questionnaire. Your opinion does count and we welcome feedback and suggestions as we attempt to meet the needs of our reading audience.

SUMMARY OF THE KY PARTNERSHIP ACTIVITIES

The members of The Kentucky Partnership continue to be engaged in diverse activities directed at achieving a common goal--*to reduce agricultural illnesses and injuries*. Highlights of activities include:

WARREN COUNTY CHAPTER

▲ Sponsored booth promoting health and safety practices at the Bowling Green/Warren County, "Back to School Bash," July 29, 1995.

▲ Provided information about The Kentucky Partnership and assisted with the local Plastic Pesticide Container Recycling Project, August 17, 1995.

▲ Shared display and conducted blood pressure screening at the Southern States annual meeting, August 25, 1995 and at the Warren County Farm Bureau annual meeting, September 23, 1995.



▲ Provided a program on prevention of back injuries for the farm women attending a tobacco meeting with their husbands in the Richardsville Community, November 1, 1995.



▲ Worked with Western Kentucky University nursing students in conducting blood pressure screening and assessment of health education needs for customers visiting 11 businesses in the rural communities of Warren County.

SIMPSON CO. ACTIVITIES

▲ Shared display promoting The Kentucky Partnership and provided blood pressure screening at the Southern States annual meeting, September 13, 1995.



▲ Obtained a proclamation from County Judge Executive recognizing September 17-23 as National Farm Safety Week.

▲ Completed results of a survey of 131 farm women conducted by Simpson County FFA members. (See the yellow insert for some of the results).

▲ Organized a program, "Keeping Our Children Safe on Today's Farms," October, 1995.

STATE, REGIONAL, and NATIONAL ACTIVITIES

▲ Shared display on The Ky Partnership at the annual meeting of the Warren Rural Electric Cooperative Cooperation, May 16, 1995.

▲ Nine individuals from both the Simpson and Warren County chapters completed a Health Care Provider CPR class on May 22, 1995.

▲ Shared program highlighting the mission of The Ky Partnership at Reedyville Community Center in Butler County, May 25, 1995 and at the Altrusa Club meeting in Bowling Green, June 20.

▲ Presented slide presentation featuring the achievements, barriers and plans for sustainability at the Rural Health Conference in Atlanta, GA, May 19, 1995 and at the World Health Organization Safe Communities Conference in McMurray, Alberta, Canada, June 8, 1995 and at the Ky League for Nursing Annual Meeting in Lexington, KY on October 6, 1995.

▲ Presented overview of The Ky Partnership to Western Ky University (WKU) nursing students in Owensboro, KY on June 21 and University of Louisville (U of L/Area Health Education Center (AHEC)) students on June 26.

▲ Presented a poster display outlining the involvement of nursing students from WKU and U of L with The Ky Partnership at the National League for Nursing biennial convention, Chicago, IL, June 10, 1995.

▲ Prepared and submitted documentation to enter the 1995 Ky Farm and Home Safety Award, Community Safety Group Category, Summer, 1995. The Ky Partnership has been selected to receive Special Recognition for Outstanding Community Farm Safety Programs by The Ky Farm and Home Safety Council.

▲ Presented Farm Safety Program at Grayson County Agriculture Fair, August 4-5, 1995.

▲ Representative attended Electrical Safety Advisory Council meeting, October 2, 1995.

▲ Representative attended Partners for a Safer Community advisory committee meeting in Chicago, October 18, 1995. This new national initiative is a collaborative effort to compile and distribute children's safety education training resources to agriculture teacher and commodity leaders.

▲ Attended a Farm Wives Conference in Macon, GA, November 11, 1995.

SPECIAL EVENTS

FARM SAFETY DAY CAMP FOR CHILDREN

On July 18, 1995, 100 energetic campers attended a day long Safety Day Camp for Kids. The event co-sponsored by **The KY Partnership** and **Progressive Farmer** magazine was declared a success by all participants!!! The campers age 8-13 attended 10 thirty minute educational sessions while the 3-7 year olds enjoyed creative fun activities focused on agriculture but targeted to their age group.

A special "thanks" to the following individuals, businesses and organizations for their generous contributions. The camp was a success due to the collaborative effort of all parties!!!

VOLUNTEER INSTRUCTORS

► First Aid/First Responder Training

Randy Fathbruckner, EMS, Medical Center at Bowling Green

► Animal Safety

Bart Jones, JonCo Livestock

► Beware: Spot the Hazard

Joe Claxon, KY Farm Bureau

► How to Prevent Falls

Susan Cherry and Lori Fox, Greenview Hospital

► PTO/Tractor Safety

Larry Piercy, Farm Safety Specialist, UK Cooperative Extension Service

► Sun Sense

Elizabeth Westbrook, The KY Cancer Program

► Pesticide/Chemical Safety

Diana Revolinski, Kosair Children's Hospital

► Electrical Safety

Roger Bessinger, WRECC

► Water/Pond Safety

Mark Gray, Natural Resources Conservation Services

► Fire Safety

Bill Carver, KY Tech Fire & Rescue Training

The children left the camp with a bag filled with items related to safety and, if lucky, they won one of the many door prizes given away. Door prizes and incentives were provided by **Progressive Farmer** and **The KY Partnership**. In addition, incentives, and food/drink items were generously donated by:

Ky Regional Poison Center of Kosair Children's Hospital,

**Country Oven Bakery,
Farm Credit Services,
Fred's Discount Store.
James River Corp,
Kendall Company,
Kentucky Cancer Program,
Ky Farm Bureau,
McDonalds,
Purity Dairy,
Southern States Coop
STAT Flight,
Vallen Safety Supply,
WRECC,**

OTHER VOLUNTEERS INCLUDED:

**Kallie Alford
Helen Brown
Neal Ballance
Vickie Brandt
Joyce Cloutier
Renea Dearing
Beverly Denton
Sue Donoho
Rita Ellis
Freda Ellis
Janice Gibson
Carol Ann Gilbert
Jeff Gravit
Mayme Ruth Halcomb
Emily Hall**

**Lorraine Mullins and Lena Shriver from
Hughes and Coleman, KIDS ARE SPECIAL**

**Garrett Janes
Pam Jarboe
& AHEC Staff
Romanza Johnson
Jane Jones
P.J. Jones
Kathy Jump
Valerie Konow
Nathan McClellan
Carie McKinnis
Barbara Nelson
Melinda Parks
Brooke Pearson
Andy Perkins
Keith Pinson
Dr. Jack Rudolph, Jr.
Anne Rush
Beverly Siegrist
Eugenia Smith
Mark Thomas
Darrell Towe
Melissa Tucker
Dennis Wright**

CAMPERS

Ginnie Adams
Jereme Alford
Justin Basham
Nicholas Basham
Laura Blackburn
Mary Neale Blackburn
B. J. Bunton
Blane Burnett
Brian Cain
Dustin Carrier
Devin Carrier
Kenny Carver
Heather Clark
J. Cullom
Ryan Davis
Kyle Davis
Kevin Dick
Dana Dickerson
Lee Dickerson
Julie Dobson
Sarah Eubank
J. David Fields, II
Matt Folker
Steven Haley
Curtis Hargett
Brandon Hayes
Christopher Hoots
Elissa Hoots
Stephanie Kennedy
Derick Kepley
Kyle Kepley
Kevin Matthews
Chad Moody
Scott Parks
Matt Parks
Caleb Pearson
Daniel Pearson
Sarah Pitts
Whit Potter
Robbie Renick, II
Rachel Rudolph
Jacob Sensenig
Chris Siegrist
Sarah Sloss
Jeremy Steele
Miranda Stinson
Audra Stratton
Jacob Sumner
Beau Tabor
Darren Tabor
Emily Tabor
Jennifer Taylor
Lisa Taylor
Beth Carol Thomas
Andy Tucker
Nicholas Tucker
David Waddell
Joseph Weber
Hollye Westbrook
Laruen Westbrook
Andy Willoughby
Kyle Yates

Safety Day Camp for Children July 18, 1994

CAMPERS: IMPORTANT NOTICE

Fred's Discount Store and
The Kentucky Partnership
have both donated a bicycle and safety helmet.
Two lucky campers will be the proud owners of
these gifts. To enter the drawing,
you must complete and return the evaluation
form that will be mailed to you in January.
**DON'T FORGET TO WATCH FOUR YOUR
EVALUATION FORM IN THE MAIL!!!**

Welcome!

Win a Bicycle
Enter by
Returning Evaluation
Form in January

**Progressive
Farmer.**

July 27, 1995

Ms. Angela Vaughn
1610 Elliott Road
Auburn, KY 42206

Dear Angela:

Congratulations on the success of your farm safety day camp. I've heard nothing but
great reports from the camp.

I realize how much work and effort goes into organizing a camp such as this, but your
efforts will save lives and prevent injuries.

Again, congratulations. We look forward to working with you again next year.

Sincerely,

Jack
Jack Odle
Editor

MINI SESSION CAMPERS

Christopher Adams
Wesley Baldwin
Jeffrey Baldwin
Ashley Bertram
Christopher Brown,
Corey Brown
Wren Burnett
Kelsey Carver
Nathan Dick
John Dodson
Aaron Drexler
Austin Drexler
Christy Eubank
Joshua Eubank
David Evitts
Ashley Haley
Jacob Hawkins
James Hawkins
Jenna Jones
Ricky Kepley
Travis Lowe
Hannah Pearson
John Pearson
Joseph Potter
Helen Pruitt
Forrest Revolinski
Tessa Revolinski
Leann Stinson
Loren Stinson
Daniel Symonds
Justin Vaughn
Cassandra Watts
Leigh Weber
Ethan Wheeler
Kara Wilcoxson
DeAnn Wright
Kevin Yates

Comments from campers:

I learned:

- ▲if someone is electrocuted, if you touch them, you can be too.
- ▲that you can get sunburned on a cloudy day.
- ▲lots.
- ▲what a roll bar is for.
- ▲be careful.
- ▲to not climb on things.
- ▲the hazards in your house to prevent a fire.
- ▲suntanned skin is damaged skin.
- ▲how to save people in the water.
- ▲how to get out of a house when there is a fire.
- ▲you can drown in grain in less than 60 seconds.
- ▲about dog bites.
- ▲about pesticides.
- ▲you can be safe and still have fun.
- ▲all kind of things and still had fun!
- ▲you can die from animals

CHILD FIRE SAFETY HOUSE

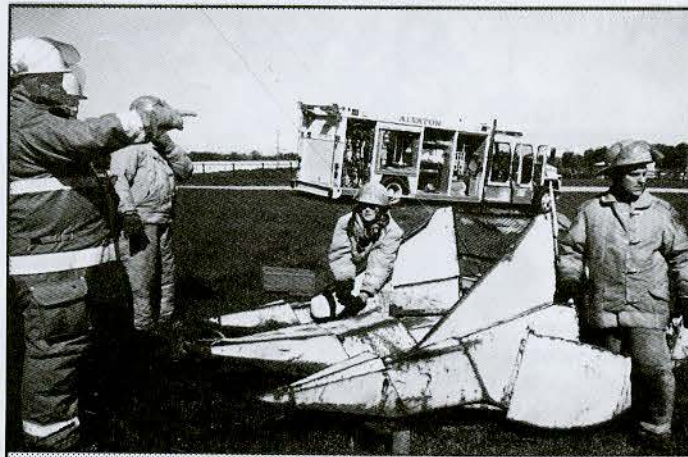
FARMEDIC TRAINING

On October 14-15, 1995, 25 EMS/fire/rescue personnel from Warren and surrounding counties completed a 2-day course in farm rescue. The program was conducted by 6 individuals who completed the Farmedic National Training Course sponsored by The KY Partnership and South Central AHEC in March, 1994. Individuals providing the course include: **Bill Carver**, Ky Tech's Bowling Green Technical School; **David Oliver**, Alvaton Fire Dept; **Bob Sanborn**, Bowling Green Fire Dept; **Kim McCarty**, Gary Madison and **Jim Williams**, Medical Center EMS.



Individuals completing the farm rescue training include:

Jimmy Adkison, Alvaton Volunteer Fire Dept.
Chris Bell, Medical Center, EMS
Donny Brown, Alvaton Volunteer Fire Dept.
Tim Buchanan, Alvaton Volunteer Fire Dept.
Michael Clay, Alvaton Volunteer Fire Dept.
Randy Cline, Browning Volunteer Fire Dept.
Jeff Corder, Browning Volunteer Fire Dept.
Kevin Cox, Cave City Fire Dept.
Jeremy Duvall, Alvaton Volunteer Fire Dept.
Allen England, Cave City Fire Dept.
Janice Gott, Richardsville Volunteer Fire Dept.
David Hall, Barren River Volunteer Fire Dept.
Kenny Harper, Cave City Fire Dept.
Pat McGrath, DVM, Alvaton Volunteer Fire Dept.
Tim Meyer, Alvaton Volunteer Fire Dept.
Edward Moody, Browning Volunteer Fire Dept.
Michael Phillips, Richardsville Vol. Fire Dept.
Randy Scoggins, Park City Volunteer Fire Dept.
Jason Smith, Alvaton Volunteer Fire Dept.
Scott Smith, Browning Volunteer Fire Dept.
Jonathon Tabor, Alvaton Volunteer Fire Dept.
Dave Turner, Alvaton Volunteer Fire Dept.
Joshua Wenzel, Medical Center, EMS
Craig Wickman, Alvaton Volunteer Fire Dept.
Sarah Wickman, Alvaton Volunteer Fire Dept.



The farm rescue training could not have been provided without the support from individuals and businesses in the community. A special thanks to the following for their assistance in providing tours and/or equipment for the training.

Joey Clark, WKU Dairy Farm
Pete Dotson and Derek Solberg, WKU Department of Agriculture
Kristin and Kelly Smith, Heritage Feed and Grain
Mitch Whitaker and Dewayne Cowles, Farmer's Fertilizer Co., Inc.
Glen Martin, Green River Ford-New Holland, Inc.

CELEBRATION OF ACCOMPLISHMENTS



In appreciation of their hard work and in celebration of their accomplishments, the members of the Board of Directors and the project staff celebrated on August 26, 1995. The celebration included a cruise with luncheon buffet on **THE GENERAL JACKSON** at Opryland, USA, Nashville, TN. Spouses were included in the festive event!!!

NEWS ABOUT OUR OWN

Norma Cohron, is currently serving a Chair, Education Committee, Warren County Farm Bureau. Norma has recently been busy presenting programs in the elementary schools emphasizing the role of agriculture in supplying the food available for purchase in the grocery stores.

Lori Hughes, spent 2 weeks this past summer in St. Petersburg, Russia serving as an advisor to Russian farmers. While serving through the Citizens Network Agribusiness Alliance (CNA) Volunteer Program, Lori assisted with seminars addressing building grassroots farming organizations at the 4th annual Russian Farmers' World Fair. The seminars, which she conducted along with other American Farm Bureau (AFB) Women's Committee members, covered topics such as farm bureau structure, government relations and fundraising.

Elizabeth Westbrook, Regional Coordinator, The KY Cancer Program, recently reviewed a manuscript on skin cancer for the **JOURNAL OF AGROMEDICINE**. Also, Elizabeth, received funding from the KY Oral Health Consortium for a grant proposal to develop a photo novel addressing the use of "Smokeless Tobacco" among our rural youth. The KY Partnership will be working with The KY Cancer Program on this creative endeavor. Angela Vaughn, President of The KY Partnership, accepted the award on behalf of both groups in Frankfort, KY on September 28, 1995.

Peggy Tucker was recently appointed to the KY Farm Bureau Safety and Rural Health Advisory Committee. Peggy also attended a Farm Wives Conference in Macon, Georgia on November 11, 1995. Hats off to **Dale Tucker**, Peggy's husband, for being selected as Farmer of the Year by Bowling Green-Warren County Chamber of Commerce. Dale and Peggy hosted a second year resident in Family Practice from the University of Louisville on September 19, 1995. Dr. Rogers was eager to discuss potential strategies to reduce agricultural illnesses and injuries.

Angela and Dennis Vaughn received the 1995 Agricultural Leadership Award at the Simpson County Cooperative Extension Service Leadership Banquet on November 20, 1995.

NEW RESOURCES AVAILABLE

The Board of Directors of The KY Partnership are pleased to announce the completion of 2 new educational resources. First, a video, "Being Safe on the Farm: A Child's View" emphasizes safe practices children can take on farms to prevent illnesses and injuries. The production of the video would not have been possible without the hard

work of key individuals and the community support of the following individuals and businesses:

Linda Dickerson, Member, Board of Directors and Chair, Video Committee; **Jeff Boyles**, WBVR; **Sheryl Morris and Chris Bratton**, TKR Cable of Southern Kentucky; Community Cast Members: **Curtis and Ronnie Hargett**, **Betsey and Bonnie Berman**, **Zack Phillips**, **Ronald Bunton**, **Sueann Thomas and Kevin Moore**, Educational Consultant, University of Kentucky. We were delighted that the majority of these individuals joined us for a family potluck on Sunday, May 24, 1995

Committee members of The KY Partnership, **Faye Alford**, **Debbie Vernon**, **Vivian McClellan**, have completed the creative coloring/activity book presented in rhyme. The book is targeted for children ages 5 to 8. **Jennifer Desmarais** provided the artistic illustration for the book and 2 community organizations, **The Medical Center at Bowling Green** and **Warren Rural Electric Cooperative Cooperation**, provided funds to assist with the first printing of the coloring book. Please visit the office or call and request these educational tools to be used in your community programs to promote safe practices.

We have recently added the following items to our resource library:

- ▲ Play It Safe Farm Safety Challenge Games
- ▲ Barney Video on Safety
- ▲ Photonovels on "Proper Lifting," "Stress and Stress Management," and "Safety Around Grain Bins".
- ▲ A Student Manual and Video addressing Farm Equipment Operation for Women (FEOW) produced by Olds College, Olds, Alberta, Canada.
- ▲ Video, "On Country Roads" developed by the National Extension Homemakers Councils, Inc. and funded by a grant from the National Highway Traffic Safety Administration.

We have an inventory list of all resources and encourage you to use these items to promote the health and safety of our farm families.

Also, we have items to sell, tote bags and sweat shirts with The KY Partnership logo and a first aid kit!!! These items make nice gifts for those special occasions. Call 502-745-6328 for more information.