

Winter 2005

## Traces Volume 33, Number 4

Kentucky Library Research Collections  
Western Kentucky University, [spcol@wku.edu](mailto:spcol@wku.edu)

Follow this and additional works at: [https://digitalcommons.wku.edu/traces\\_bcgsn](https://digitalcommons.wku.edu/traces_bcgsn)



Part of the [Genealogy Commons](#), [Public History Commons](#), and the [United States History Commons](#)

---

### Recommended Citation

Kentucky Library Research Collections, "Traces Volume 33, Number 4" (2005). *Traces, the Southern Central Kentucky, Barren County Genealogical Newsletter*. Paper 140.  
[https://digitalcommons.wku.edu/traces\\_bcgsn/140](https://digitalcommons.wku.edu/traces_bcgsn/140)

This Newsletter is brought to you for free and open access by TopSCHOLAR®. It has been accepted for inclusion in Traces, the Southern Central Kentucky, Barren County Genealogical Newsletter by an authorized administrator of TopSCHOLAR®. For more information, please contact [topscholar@wku.edu](mailto:topscholar@wku.edu).

2005

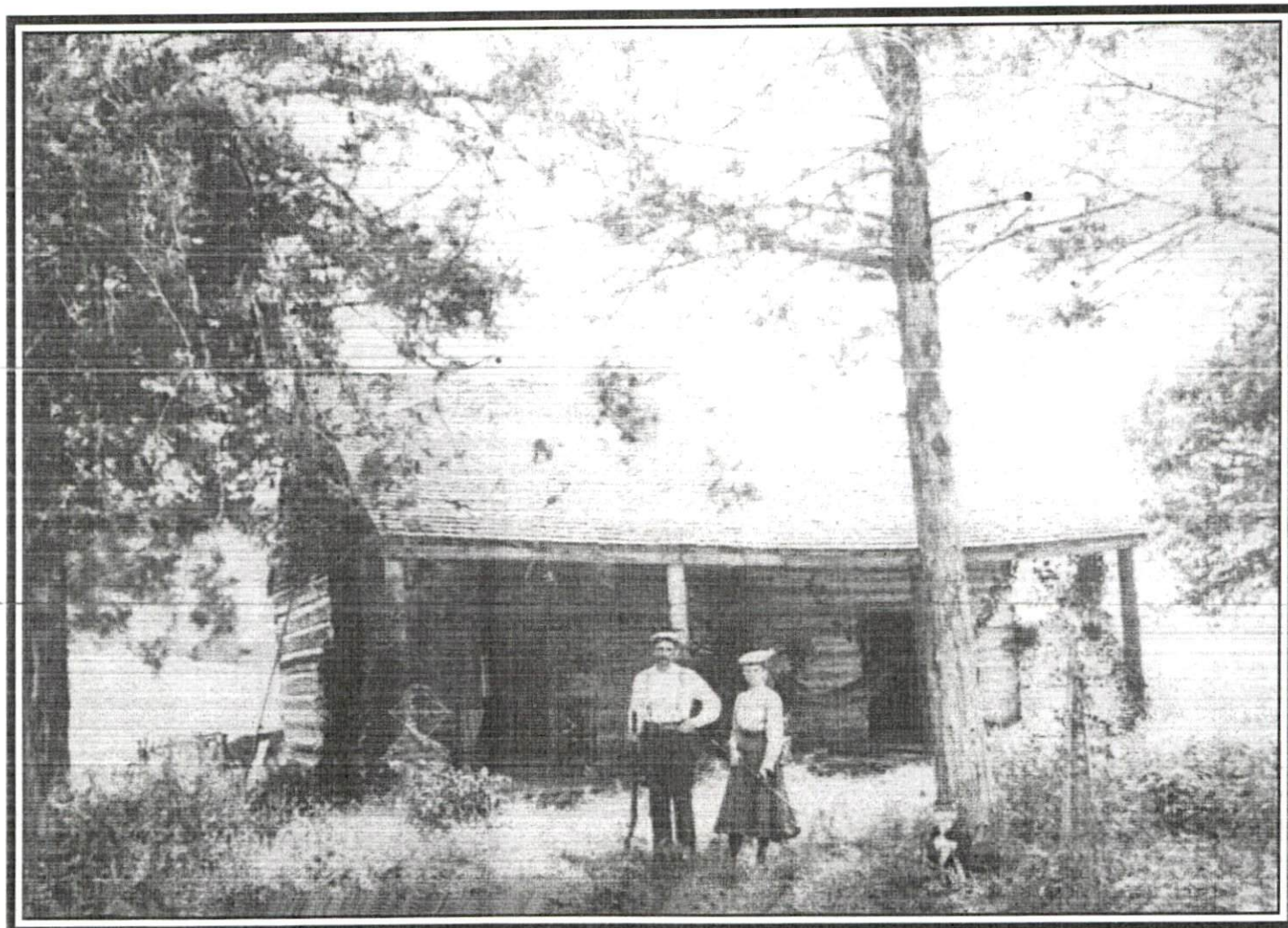
VOLUME 33

ISSUE NO. 4

ISSN - 0882-2158

WINTER

# TRACES



## **John and Orpha Nelson**

Quarterly Publication of  
**THE SOUTH CENTRAL KENTUCKY HISTORICAL AND GENEALOGICAL SOCIETY,  
INCORPORATED**

P.O. Box 157

Glasgow, Kentucky 42142-0157

**SOUTH CENTRAL KENTUCKY HISTORICAL & GENEALOGICAL SOCIETY**

Post Office Box 157  
Glasgow, Kentucky 42142-0157

**OFFICERS AND DIRECTORS 2004-2005**

<b>PRESIDENT</b>	<b>LEONARD KINGREY</b>
<b>1<sup>ST</sup> VICE PRESIDENT</b>	<b>VACANT</b>
<b>2<sup>ND</sup> VICE PRESIDENT</b>	<b>KEN BEARD – MEMBERSHIP</b>
<b>3<sup>RD</sup> VICE PRESIDENT</b>	<b>VACANT</b>
<b>RECORDING SECRETARY</b>	<b>GAYLE BERRY</b>
<b>CORRESPONDING SECRETARY/ TREASURER</b>	<b>JUANITA BARDIN</b>
<b>ASSISTANT TREASURER</b>	<b>RUTH WOOD</b>
<b>EDITOR, "TRACES"</b>	<b>SANDI GORIN</b>

**BOARD OF DIRECTORS**

Haskel Bertram  
James Peden

Don Novosel  
Selma Mayfield

Dorothy Wade  
Mary B. Jones

**PAST PRESIDENTS**

Paul Bastien  
Jerry Houchens \*  
Katie M. Smith \*

L. E. Calhoun  
Brice T. Leech \*  
Ruby Jones Smith

Cecil Goode  
John Mutter  
Joe Donald Taylor

Kaye Harbison  
James Simmons \*  
W. Samuel Terry IV

\*Deceased

**ON THE COVER**

John "Pa" Nelson and wife Orpha in front of their cabin at Mammoth Cave. See article following.



*John Marion Nelson - "Pa"  
March 17, 1867 - July 31, 1956*



The following article was presented by James Mark Nelson and John R. Nelson at a recent South Central Kentucky Historical and Genealogical Society meeting 22 September 2005. The above photograph of "Pa" Nelson and the cover photograph were provided by them.

Many of you already know something of the life of John Nelson, but for those who may not, let me begin with a brief biographical sketch just to give you some perspective of how diverse and extraordinary the man is. I'll try to be as chronological and accurate as possible, but if any of you recognize inaccuracies or have questions or comments, please feel free to interrupt and contribute at any time.

John Marion Nelson was born on St. Patrick's Day in 1867 - just two years after the Civil War ended. John was born in Burkesville where his father, Nick Nelson, was ferryman at a place called Neeley's Ferry on the Cumberland River. Nick, born in Scotland, had come to Kentucky from Pennsylvania with a group of men to dig salt wells. As an aside, they struck oil, but didn't "strike it rich". Nick Nelson died in November 1878. Nick's wife, Amanda Firquin Nelson, - being five months pregnant - moved with her eight children to Glasgow where they lived in a tenant house on Judge Bowles property at Dugantown. The ninth child was born there on the Bowles property, and their mother, Amanda, died three years later in 1882. John was an orphan at age 15, but luckily Judge John Bowles and his wife, Ella, took John and four younger daughters "under wing" and educated them. I don't know how the other orphaned children survived or were "farmed out". But they were relatively successful. John continued to work on Judge Bowles' sizeable farm for an unknown time.

In 1894, John, at age 27, got a job painting and papering the Old Mammoth Cave Hotel which was then under private ownership. It was also in 1894 that circumstances led John to begin guiding tours through the Cave. In 1899 he married Orpha Jane Rigdon, and they lived in cottage on Mammoth Cave Estate, and later moved to Cheaumont. He remained an official guide until 1905, having made some 4,500 trips through the Cave. He then guided at Colossal Cave for two years and was able to explore a good many caves in the region. By 1907 they had moved to Glasgow where they bought a house on Columbia Avenue behind which was the Burkesville



stagecoach barn. In Glasgow, John worked as a decorator, and became fire chief in 1907 – a job he had until he retired in 1942 at age 75. He officially became “Pa” Nelson in 1909 when son, John Uri, was born and then, in 1911, when twins, Dink and Lorien, were born. “Pa’s” wife Orpha died in 1918, the boys were 9 & 7, he was 51 years old and must have been a busy man.

Even though “Pa” was fire chief for over 35 years, and while the Fire Department had several trucks including the 1925 Seagrove, “Granny”, still in service for parades, the irony is that “Pa” never drove. He depended on his kids or others to take him to the fire or elsewhere. So, when “Pa” went fishing, or to the houseboat, arrowhead hunting, or caving, somebody drove him. It was not uncommon for somebody to drop him off at a newly plowed field, leave him all day, and pick him up after work.

And, “Pa” was a collector. He collected guns, knives, fossils, cave rocks, sea shells, stuffed animals. But his real passion was for Native American artifacts, i.e., Indian relics. To give you some idea of the magnitude of his several collections, I quote from an article written for the Courier-Journal ca 1946. I quote J. H. Mader: “For every day so spent in exploration, John Nelson has a memento. There are thousands of these in a huge warehouse he has erected at the rear of his home in Glasgow. Some he treasures more than others, not because he has been offered more by collectors, but because of the circumstances under which they were found. Heaped together in bushel baskets, barrels, boxes and other kinds of containers, he will exhibit more than 27,000 arrowheads, spearheads, war points, domestic implements used in bygone centuries. If volume will impress the visitor he will show him that many more items which he has discarded because they are broken or imperfect. He will bring forth more than 200 celts, perfectly shaped tool stones; more than 100 tomahawks; stone pipes by the dozens; strings of bone and shell beads ... An interested visitor will get a tale with each item, for John loves nothing better than to show his precious collection under the most favorable circumstances – a good listener, a keen eye, and plenty of time for anecdotes. He likes best to conjecture about the varied use the Indians made of stone – paint stones for facial decoration or masquerading, if not to incite fear; canoe-shaped boat stones, which mystify him, but which he believes were used to throw as weapons before bows and arrows came into use; play stones of all shapes and sizes – the chess and checker pieces of another age. He can vividly re-enact his understanding of their social, domestic and political activities as reflected in flint hoes of all sizes, skinning stones used to trim fur and hide from the animals; scrapers used in whittling and shaping tools and wearing apparel; flint knives, flint drills, arrow points, spear points, bone, shell and horn needles and awls. He likes to show his collection of Indian bowls, cups, bottles and jars, slyly conjuring up meanwhile suggestions as to what the Indians used to quench their thirst.

“Pa” had envisioned a museum at Mammoth Cave with his collection serving as a nucleus, but that has yet to materialize. In 1942 he did sell a collection to the Mammoth Cave National Park Association who then gave it to the National Park Service for study and display. According to Charles “Chuck” DeCroix some 17,000 items of the Nelson collection are in curation at the Park. However, a 1958 archaeological report from Mammoth Cave lists 25,000 catalogued specimens and 5,000 un-catalogued in the 1942 collection. This same report also clearly indicates that the archaeologists were more than a little miffed that Pa had failed to catalogue his artifacts with respect to provenience – nor did he have notes to help. They were also less than impressed with his ability to recall from memory where he or others had found things. Again, “Pa” was a collector – not a scientist. Many of “Pa’s” relics are “buried at Mammoth Cave, many are at the Kentucky Building at Western Kentucky University where they are occasionally displayed, and others are at the Smithsonian in D. C. Others are in private collections.



**BARREN COUNTY CEMETERY BOARD RECEIVES \$2,000 GRANT**

By Sandi Gorin, Chair, Barren County Cemetery Board.

As previously announced some time back in "Traces", a Barren County Cemetery Board was established to assist in the preservation and restoration of two cemeteries in the county; McDaniel's Cemetery and Burton. After a long, wait, the Board received notification through Davie Greer, County Judge Executive, that we had received a \$2,000 grant. The following article appeared in the *Glasgow Daily Times* Wednesday, November 2, 2005 on pages 1 and 16:

"Legislators bring checks of gold. (Ronnie Ellis, reporter). "State Sen. Richie Sanders, R-Franklin, and Rep. Steve Nunn, R-Glasgow, were in town Tuesday bearing gifts for the Glasgow Police Department and the county Cemetery Board. The two represented the Governor's Office of Local Development (GOLD) which made grants of \$3,310 to the police department for body armor and \$2,000 to the county Cemetery Board to preserve Burton and McDaniels cemeteries. [Police Department story here].

"Shortly after presenting the check to the police department, the two representatives and staff from the GOLD office presented another, this one to the county's cemetery board. "Board chair Sandy [sic] Gorin said the board "appreciate(s) these funds very much and they will be well used. She said the board will clear off and preserve graves in the McDaniel Cemetery which includes five to six Confederate soldiers [sic, seven], one of whom was a member of John Hunt Morgan's cavalry, and graves in the Burton Cemetery. That cemetery is small, Gorin said, with graves of African Americans, one of whom was a Union soldier.

"GOLD Commissioner Ellen Williams said through a written statement such local projects are important. Funding projects like these are very important to the people of the community." Williams' statement said. "I am pleased this administration chose to award these grants to Glasgow and Barren County residents."

The photograph below is courtesy of the *Glasgow Daily Times* and Jamie Ray, photographer. Pictured: Back row, left to right: Brian Smith, field representative for Gov. Ernie Fletcher, Krista Levee of the GOLD office, Phyllis Causey, Sen. Richie Sanders. County Judge Executive Davie Greer, Rep. Steve Nunn and Samuel Terry IV (representing the Terry family buried at the McDaniel's cemetery). Front row left to right: Wayne Davis, Sandi Gorin, Mary Green and Martha Powell Harrison, Barren County Cemetery Board. Not shown was Ruth Hundley.





## The Town of Glasgow

by Ken Beard

During the later part of the 1980's, I was required to use a drafting software program called AutoCad. Some time before I had made various copies of old maps recorded in deed books in the Barren county court Clerk's office and decided to use them as a learning tool. Recent events have focus my attention back to these maps and information compiled by my good friend, the late Mr. Pete Leech. Little is known about the early days of Glasgow and the real origin of the name. Glasgow is of Gaelic origin and meaning *The green, fruitful place*. Some information can be gleamed from a study of the map and a knowledge of history for that time period. In Franklin Gorins book "The Times of Long Ago Barren County, Kentucky" he states "*The town of Glasgow received its name from Glasgow, Virginia and not Glasgow, Scotland.*" The Winter 1995 issue of Traces addresses this question and possible location/history.

The town begins at the corner of Liberty and Front streets. By naming the first street Liberty, they have made a tribute to the American Revolution, especially those who played a major roll at the Battle of the Cowpens January 17, 1781.

Washington Street	Major General George Washington - 1732-1799
Green Street	Major General Nathaniel Greene - 1742 - 1786
Morgan Street	Brigadier General Daniel Morgan - 1736-1802
Wayne Street	Brigadier General Anthony Wayne - 1745-1796
Lewis Street	unknown
Front Street	The front side of town.
Water Street	Along spring branch and South Fork of Beaver Creek.
Race Street	Horse racing between Front & Washington Street.
Main Street	The Main Street of town.
Main Cross Street	North-South Main Street - now Broadway
Common Street	Now Franklin Street, changed sometimes after 1863.
Short Street	The shortest street in town, extended to Liberty and renamed College.

### STORIES OF EARLY DAYS

by Cyrus Edwards

The Act creating Barren County was adopted in the year 1798 - I presume early in the year - and an election was held to determine the location of the County Seat. There were only two places seriously considered as available - at the Gorin Spring at (later) Glasgow and at the Squire Garnett spring on Beaver Creek [where the Old Munfordville road/Lexington Drive crosses Beaver Creek]. The owners of both proposed sites agreed to give land for public buildings and streets free of charge and, both being popular, the race was fought with great vigor to a finish. The northeast portion of the county - about Pascal, Laffayette, and Knob Lick - was the thickest settled and was strong for Garnett, the region toward Edmonton was divided, and the southern part of the county, with a much smaller vote, was supposed to be nearly solid for Gorin. The two contesting points were the only voting in the county and the election lasted three days. Many of the voters went the first day and camped on the grounds until the election was over. The last day couriers went each way about every half hour with statements of the vote and the excitement ran high toward the last. Gorin won by only a few votes and the capital was established accordingly. It was said that Gorin won by all of his Revolutionary comrades in the north and east portion of the county (and they were many) coming in on the last day and voting solidly for him, although many of them through that the Garnett place was the better in many respects.



## ESTABLISHMENT OF GLASGOW

Barren County Order Book #1  
November Court 1799

An application of John Goran it is Ordered that a Town be Established on his land where he now lives, and that 152 acres of land be appropriated to the use of the said Town which are in the Following bounds Towit Beginning at a stake on the side of a hill running thence S 70° E 142 poles to a Beech tree thence S 24° E 106 poles to a Beech at the foot hill near the Creek thence S 33° W 114 poles Crossing the Creek to a small beech standing on the bank of said Creek thence N 33½° W 214 poles to a stake on the top of a hill near the Corner of the Original Survey thence N 70° W 16 poles to a Stake thence N 20° E 61½ poles to the Beginning which said Town shall be called and known by the name of Glasgow; & it is ordered that Hardan Trigg, John Cole, John Mathews, John McFerran, John Moss, Abel Hennon & Wm Welsh be appointed Trustees of the said Town of Glasgow and that the Title of the afs' 152 Acres of Land be vested in the said Trustees and their Successors agreeable to an Act of Assembly entitled "an Act of Assembly concerning Establishing of Towns" thereupon the said John Goran with John Mathews & John Moss his surety entered into bond in the penalty of £1000 conditioned as the Law directs.

This land was from a land grant to John Scott who served as a Lieutenant in the Fifth Regiment of Light Dragoons from August 10, 1780, to November, 1782. The grant issued on February 24, 1784 for 2,666 2/3 acres and surveyed December 15, 1785 by George Rogers Clark. See Traces, Fall issue 1999.

### COURT ORDER BOOK #1 Page 29

January 1800 - John Gorin, first mayor in said courts came into court and took the oath to the United States, the oath to the State of Kentucky, and the oath of office which is ordered to be certified.

-----

The Town of Glasgow was divided into two sections. The Lots within the Towns border were equal in length and width (blocks 300' x 300', lots 150' x 150', based on the scale and the call along Front Street) with streets on each side (35' wide). The "in" lots number 1 through 110. The "Out" lots were irregular without street access. The out lots numbered 1 through 17.

The survey of the town's establishment begins near the corner of Liberty and Front Street at Lot #1 and runs East along Front Street to Out Lot #1. From Out Lot #1 (crosses the Burksville Road US 90) to a corner between Out Lots #6 and #10. From 6 & 10 to the South corner of Out Lot #17, crossing the South Fork of Beaver Creek in lot # 13. It continues along the East side of the creek, crossing the Temple Hill road at the junction of the spring branch and to a point approximately 700' South of the road (US 63). From this point, a straight line to a point near the corner of Race and Washington Street. Along Washington Street to Liberty Street. Along Liberty Street to the Beginning.

Comparison of this map and the next, indicates a change of the call between out lots #6 & #10. This call has been moved back point on out lot #3, just North of the Burksville Road and all of the out lots compressed to fit the bounds. There is no indication or location of the creek. A map drawn by S. J. Jordan, etal. in 1891 indicate that the bounds never cross the creek.

## MAPS OF GLASGOW

### MAP # 1

The first map of the Town of Glasgow can be found on page 112 of deed book A. The transaction on the previous page (back) is dated Aug. 15, 1804. The transaction on the next page is dated May 27, 1800. It is assumed that this map was drawn within this book about 1805. After 180 years, the ink used to draw the map has degraded the paper to the extent that the following lots are missing or loose within the book: 81, 82, 83, 84, 85, 86, 87, 88, 94, 95, 96, 97, 98, 99, 100, 101, 106, 107, 108, 109 & 110. Out lots 12, 13, and 17 are detached but still within the book. Portions of the map have been taped to prevent further loss. The tape has turned dark and difficult to read through. The original map was apparently drawn by John Gorin himself. (Signed vertically by John Gorin on the right margin.) (Today, 2005, this book has been copied and combined with Deed book before A (AA) with the original books archived.)

It can be noted by plotting the original land owners by date, that the lots along the creek were the first to be sold. This would seem logical because the early settlers required a convenient source of water in order to survive. This fact may explain the unusual shape of Glasgow by extending the town along the Spring branch. For the most part, the creek runs through the center of Glasgow.

### MAP # 2

The second map dates around 1820 and is found in Deed Book B prior page #1. This map shows all of the "in" lots, the creek and connecting roads. It also shows several dwellings. The artist uses several schemes to show the differences in each dwelling. The Public Square shows a small building on the East side of the square. This apparently is the pub granted to John Gorin.

### MAP # 3

This map dates to 1852 and has the following note written on the back.

Sat, Jas. G. Hardy, this day before me in my office, being sworn states that the within is a correct map of the town of Glasgow according to the map of the old part of the town and by actual survey of the divisions as shown by William Depp.  
March 8th, 1852

Parts of the lower portion of the original has been destroyed but recorded in Plat Book #1. A note on the map states;

This is an exact reproduction of a map that was filed for record about the year 1800(?). The original map may be found in Barren County Court Clerks office.

Paul F. Pride  
Barren County  
Surveyor 1950

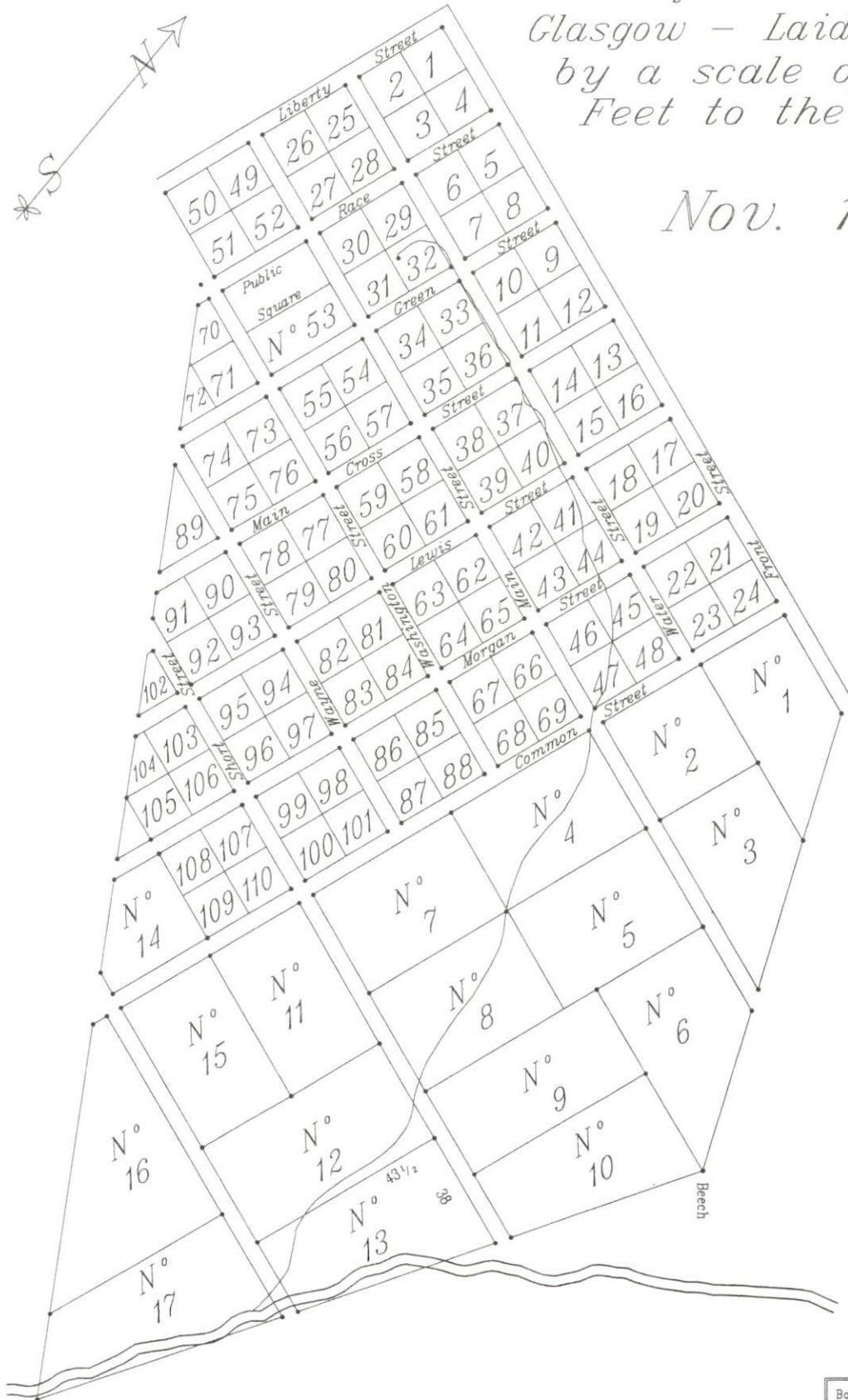
-----

The following is a list of property owners compiled mostly by Pete Leech. I have yet to resolve his source "co".



*A Plot of the Town of  
Glasgow - Laid down  
by a scale of 400  
Feet to the inch*

*Nov. 1799*



0 400 500 800 1000  
Scale in Feet

MAP #1  
Barren County Ky.  
Map Deed Book A  
Page 112  
Calls Order Book #1  
Page 17  
Sept. 1908





MAP #2

Barren County Ky.  
Deed Book B  
Prior to page 1.  
Sept. 1988

ANGLAS\_KY2.DWG





TOWN OF GLASGOW - Lot Owners

Lot	Grantee	Price	Date	Book	Page
1	George Washington Fletcher	\$10.00	March 22, 1800	A	47
	B. B. Crump		June 20, 1820	co	124
2	John Matthews		March 31, 1801	B	17
	John Matthew heirs		1815	co	16
3	William Stringfield - lots 3 & 28	\$70.00	March 22, 1800	A	57
4	George Chapman		Sept. 26, 1811	B	4??
	John Matthew orig to Geo Chapman		Sept. 1811	co	20
	John Matthew heirs (4 & 5)		1815	co	161
5	Edward Saunders	\$12.00	March 22, 1800	A	48
6					
7	John Matthews - lots 7, 13, 70 & 71	\$82.00	March 22, 1800	A	46
8	James Franklin - lots 8, 9, 12 & 37	\$55.00	March 22, 1800	A	56
9	James Franklin		March 22, 1800	A	56
9	William Welsh - lots 9 & 38	\$29.00	March 22, 1800	A	39
10	John Gorin		Oct. 31, 1801	B	16
11	John Gorin		Oct. 31, 1801	B	16
12	James Franklin		March 22, 1800	A	56
13	John Matthews - lots 7, 13, 70 & 71	\$82.00	March 22, 1800	A	46
14					
15	James Miller - lots 15 & 16	33 shillings	July 28, 1806	A	344
	James H. Rice		June 20, 1807	B	148
16	James Miller		July 28, 1806	A	344
	James H. Rice		June 20, 1807	B	148
17	Henry Miller	\$9.84	April 23, 1803	B	28
18	Henry Miller - lots 17, 18, 19, 20, & out lot 12		April 23, 1803	B	28
19	Henry Miller		April 23, 1803	B	28
20	Henry Miller		April 23, 1803	B	28
21	Ann Harris - lots 21, 22, 23, & 24	48 shillings	June 20, 1807	B	146
22	Ann Harris		June 20, 1807	B	146
23	Ann Harris		June 20, 1807	B	146
24	Ann Harris		June 20, 1807	B	146
25	Rhody Fewell	\$26.00	June 7, 1800	A	40
26	William Higgins	\$37.00	March 22, 1800	A	53
27	William Feland	\$41.00	March 22, 1800	A	59
	John Terry part of for taxes		Jan. 1840	co	294
28	William Stringfield - lots 3 & 28		March 22, 1800	A	57
29	part of Spring Lot				
30	John Cole Sr. - lots 30 & 74	\$59.00	March 22, 1800	A	38
	Henry Crutcher house		1810	co	3
31	John Gorin original				

Book \_\_\_\_\_ Page 104

At a meeting of the trustees at the Bank of Green River on the 20th. Feb. 1819.

Present - Joseph Winlocke, Pres., Charles Harvey, J. R. Underwood.

It was satisfactorily proved to the board by the testimony of John McFerran that the original establishment of the town of Glasgow, John Gorin gave to the county of Barren 150 acres of land for the purpose of establishing a town and two acres in addition for a public square, the said 150 acres to be laid off into inn and out lots and to be sold for the benefit of said Gorin and the county of Barren (said Gorin having a right reserved to select first choice of Lots) said Gorin made selection



TOWN OF GLASGOW - Lot Owners

Lot	Grantee	Price	Date	Book	Page
	of the corner lot above the spring on which the family lived which he took at \$79.00 being the price of the highest lot sold at auction. It is therefore considered by the Board that said Gorin is entitled to the legal title to said lot No. 31 and that this Board will execute a deed for said lot to said Gorin when the same is properly prepared and presented.				
	Adjourned Jas. Winlocke.				
32	<b>Spring Lot</b>				
33	John Gorin .....		Oct. 31, 1801	B	16
	B. B. Crump .....		Nov. 27, 1835	co	276
	35' Front 35' Back 75'				
34	John Gorin .....		Oct. 31, 1801	B	16
	John Anderson - part of .....	\$20.00	Oct. 1, 1802	B	27
	S. M. Bagby				
	taxes 20' on Green St. ....		Nov. 27, 1835	co	253
	D. Miller & Duncan heirs .....		Jan. 1839	co	279
35	Henry Miller - lots 35 & 52 .....	\$68.00	March 22, 1800	A	54
	John Anderson blacksmith shop .....		1810	co	3
	A. B. Crutcher .....		Jan. 07, 1839	co	279
36	John Gorin .....		Oct. 31, 1801	B	16
	occupied by G. T. Deering in 1839				
	A. B. Crutcher .....		Jan. 07, 1839	co	279
37	James Franklin .....		March 22, 1800	A	56
38	William Welsh .....		March 22, 1800	A	38
39	John Bird .....			co	8?
	John Matthew to Daniel Culp .....		Oct. 11, 1811	co	21
40	W. T. Bush from W. Matthews .....				
41	Daniel Culp .....		1811	co	52
42	Daniel Culp .....		1811	co	52
43	Daniel Culp .....		1811	co	52
44	Daniel Culp .....		1811	co	52
45	Thomas Dickerson .....		April 23, 1803	B	29
46	Thomas Dickerson .....		April 23, 1803	B	29
47	Thomas Dickerson .....		April 23, 1803	B	29
48	Thomas Dickerson .....		April 23, 1803	B	29
49	John Bell - lots 49 & 75 .....	\$22.00	March 23, 1801	B	5
49	Andrew Soury - by suit in chancery .....		April 23, 1803	B	26
50	John Matthews .....		1815	co	61
	W. J. Wood .....		Jan. 1840	co	294
51	John Allin .....	\$79.00	March 22, 1800	A	50
	John Matthews .....		1810	co	3
52	Henry Miller .....		March 22, 1800	A	54
53	<b>PUBLIC SQUARE</b>				
54	James Black .....	\$50.00	March 22, 1800	A	44
55	William Wright .....	\$34.00	Oct. 31, 1801	B	15
56	Mr. Welch .....		1810	co	3
57	John Baugh .....	\$16.00	March 22, 1800	A	51
	part occupied by O. E. Curd				
	L. H. Murrell \$5.23 .....		Jan. 07, 1839	co	279
	W. J. Wood .....		Jan. 1840	co	294
58	Isaac Robertson - lot 58, 59, 60,61 .....	\$26.00	Oct 31, 1801	B	16

TOWN OF GLASGOW - Lot Owners

Lot	Grantee	Price	Date	Book	Page
	T. Feland J. Miller .....		Oct. 30, 1835	co	256
	Whitejett & Curd .....		Jan. 07, 1839	co	279
59	Isaac Robertson - lot 58, 59, 60,61 .....	\$26.00	Oct 31, 1801	B	16
60	Isaac Robertson - lot 58, 59, 60,61 .....	\$26.00	Oct 31, 1801	B	16
	from Jas. Eubank Jr et. al. to .....		1832		
	Thomas Dickinson				
61	Isaac Robertson - lot 58, 59, 60,61 .....	\$26.00	Oct 31, 1801	B	16
	from Jas. Eubank Jr et. al. to .....		1832		
	Thomas Dickinson				
62	.....			-	-
63	John Matthews heirs .....		1815	co	61
64	John Matthews heirs .....		1815	co	61
65	John Matthews heirs .....		1815	co	61
66	John Matthews heirs .....		1815	co	62
	F. Gorin taxes .....		Dec. 30, 1835	co	256
67	John Matthews heirs .....		1815	co	62
	F. Gorin taxes .....		Dec. 30, 1835	co	256
68	John Matthews heirs .....		1815	co	62
69	John Matthews heirs .....		1815	co	62
70	John Matthews .....		March 22, 1800	A	46
71	John Matthews .....		March 22, 1800	A	46
72	Matthews heirs .....		1815	co	53
73	William Cole .....	\$14.00	Mar. 22, 1800	A	36
	John Monroe				
	Edward Eubank .....		May 24, 1817	F	57
74	John Cole Sr. ....		March 22, 1800	A	38
75	John Bell - lots 49 & 75 .....		March 23, 1801	B	5
76	John Sea .....	\$14.00	March 22, 1800	A	43
77	.....			-	-
78	William Standly - lots 78, 98, 99, 100, 101 .....	\$1.00	April 23, 1803	B	26
79	.....			-	-
	James Jeffries				
	¼ back taxes .06¢ .....		Nov. 27, 1835	co	250
80	John Monroe .....		May 1811	co	51
	John Garnett				
	Lucy Monroe John decd. ....		Sept. 13, 1821	co	127
81	John Matthews orig. ....		1804		
	Jas. H. Rice .....		Sept. 26, 1811	co	19
82	John Matthews orig. ....		1804		
	Jas. H. Rice .....		Sept. 26, 1811	co	19
83	John Matthews orig. ....		1804		
	Jas. H. Rice .....		Sept. 26, 1811	co	19
84	John Matthews orig. ....		1804		
	Jas. H. Rice .....		Sept. 26, 1811	co	19
85	James Miller - lots 85, 86, 87 & 88 .....	\$5.00	July 28, 1806	A	345
86	James Miller .....		July 28, 1806	A	345
87	James Miller .....		July 28, 1806	A	345
88	James Miller .....		July 28, 1806	A	345
89	Daniel Curd .....	\$8.00	April 23, 1803	B	17
90	.....			-	-



TOWN OF GLASGOW - Lot Owners

Lot	Grantee	Price	Date	Book	Page
91	Thos Mayfield, Jos Jinkins, W. T. Bush .....		1815		
92	.....			-	-
93	.....			-	-
94	Jas. H. Rice .....		Sept. 1811	co	19
	B. B. Crump taxes .....		Dec. 30, 1835	co	256
	T. Feland - all .....		Jan. 03, 1840	co	294
95	Jas. H. Rice .....		Sept. 1811	co	19
96	Jas. H. Rice .....		Sept. 1811	co	19
97	Jas. H. Rice .....		Sept. 1811	co	19
	B. B. Crump taxes .....		Dec. 30, 1835	co	256
98	William Standly ??? .....		April 23, 1803	B	26
	Samuel & George Trotter of Fayette Co. ....	\$30.00	May 3 1806	A	254
99	William Standly .....		April 23, 1803	B	26
	Samuel & George Trotter of Fayette Co. ....		May 3 1806	A	254
100	William Standly .....		April 23, 1803	B	26
	Samuel & George Trotter of Fayette Co. ....		May 3 1806	A	254
101	William Standly .....		April 23, 1803	B	26
	Samuel & George Trotter of Fayette Co. ....		May 3 1806	A	254
102	John Mathews heirs .....		1815	co	61
	F. Gorin back taxes .03 1/8¢ .....		Nov. 27, 1835	co	251
	Robert B. Hall .....		July 23, 1838	co	275
103	Benj Gassaway .....		1808	co	22
	Philip Jinkins .....		1810	co	22
	Jane Jinkins (dau of Philip) .....		Oct. 11, 1811	B	405
	B. B. Crump back taxes .....		Nov. 27, 1835	co	251
	deed .....		July 23, 1838	co	276
104	Benj Gassaway .....		1808	co	22
	Philip Jinkins .....		1810	co	22
	Jane Jinkins (dau of Philip) .....		Oct. 11, 1811	B	405
	B. B. Crump back taxes .....		Nov. 27, 1835	co	251
	deed .....		July 23, 1838	co	276
105	Benj Gassaway .....		1808	co	22
	Philip Jinkins .....		1810	co	22
	Jane Jinkins (dau of Philip) .....		Oct. 11, 1811	B	405
	B. B. Crump back taxes .....		Nov. 27, 1835	co	251
	deed .....		July 23, 1838	co	276
106	Benj Gassaway .....		1808	co	22
	Philip Jinkins .....		1810	co	22
	Jane Jinkins (dau of Philip) .....		Oct. 11, 1811	B	405
	B. B. Crump back taxes .....		Nov. 27, 1835	co	251
	deed .....		July 23, 1838	co	276
107	John Crozier .....		June 20, 1807	B	149
108	John Crozier .....		June 20, 1807	B	149
109	John Crozier .....		June 20, 1807	B	149
110	John Crozier .....		June 20, 1807	B	149
	Location of Lot # 111 was not marked on the original map.				
111	Jane Jinkins .....		Oct. 11, 1811	B	405
	F. Gorin taxes .....		Nov. 27, 1835	co	251
	Robert B. Hall .....		July 23, 1838	co	275

TOWN OF GLASGOW - Lot Owners

Lot	Grantee	Price	Date	Book	Page
During the July term of 1817, the Barren County Court approved the addition of extra lots on the South side of town. On Oct. 8, 1817 the Trustees made the addition of in lots 112 to 345 and out lots 18 thru 21. Proceed to sell the balance began on Nov. 18. 1817.					
112	T. Mayfield	\$500.00	Oct. 1817	co	87?
117	John Monroe	\$350.00	Oct. 1817		
118	Will T. Bush & Co.	\$410.00			
119	T. B. Monroe	\$75.00	Oct. 1817		
	John Perkins		July 20, 1822	co	139
120	John Harris	\$70.00	Oct. 1817		
	T. B. Monroe		July 1819	co	121
121	F. Gorin	\$31.00	Oct. 1817		
122	J. Harris	\$35.00	Oct. 1817		
123	T. B. Monroe	\$25.00	July 1819	co	121
124	Geo. W. Matthews	\$76.00	Oct. 1817	co	
	F. Gorin back taxes		Nov. 27, 1835	co	251
	Robert B. Hall		July 23, 1838	co	275
125	W. T. Bush	\$250.00	Oct. 1817		
	F. Gorin back taxes		Nov. 27, 1835	co	251
	Robert B. Hall		July 23, 1838	co	275
126	G. W. Matthews	\$161.00	Oct. 1817		
	F. Gorin back taxes		Nov. 27, 1835	co	251
	Robert B. Hall		July 23, 1838	co	275
127	W. T. Bush	\$200.00	Oct. 1817		
	F. Gorin back taxes		Nov. 27, 1835	co	251
	Robert B. Hall		July 23, 1838	co	275
128	W. T. Bush & Co.	\$250.00	Oct. 1817		
	F. Gorin back taxes		Nov. 27, 1835	co	251
	Robert B. Hall		July 23, 1838	co	275
129	Dabney Turner	\$51.00	Oct. 1817		

Lots 130 thru 136 were not assigned.

139	D. Turner	\$61.00			
	F. Gorin back taxes		Nov. 27, 1835	co	257
140	T. B. Monroe	\$50.00	July 1819	co	121
	F. Gorin back taxes		Nov. 27, 1835	co	257
141	Ben. Monroe	\$40.00	Oct. 1817		
	J. Gorin		Dec. 22, 1822	co	142
	F. Gorin back taxes		Nov. 27, 1835	co	257
142	T. B. Monroe	\$210.00	Oct. 1817		
	Geo. Rogers		May 01, 1820	co	124
143	Will Butler	\$200.00	Oct. 1817		
	Geo. Rogers		May 01, 1820	co	124
144	Will Butler	\$205.00	Oct. 1817		
	Geo. Rogers		May 01, 1820	co	124
145	Wm. Courts Jr.	\$181.00	Oct. 1817		
146	Geo. Rogers	\$175.00	Oct. 1817		
147	Geo. Rogers	\$180.00	Oct. 1817		
148	Smith & Matthews	\$50.00	Oct. 1817		



TOWN OF GLASGOW - Lot Owners

Lot	Grantee	Price	Date	Book	Page
149	Smith & Matthews	\$50.00	Oct. 1817		
150	Smith & Matthews	\$50.00	Oct. 1817		
151	Smith & Matthews	\$50.00	Oct. 1817		
152	Smith & Matthews	\$100.00	Oct. 1817		
153	O. Wade	\$36.00 Bal. \$90.00	Oct. 1817		
154	Preston H. Ritter	\$200.00	Oct. 1817		
155	Preston H. Ritter	bal \$300.00	Oct. 1817		
	Dan Smith	\$16.00	Oct. 1817		
156	Smith & Matthews	bal \$20.00			
	Preston Ritter	bal \$100.00			
	Dan Smith	\$34.00	Oct. 1817		
157	Smith & Matthews	bal \$20.00	Oct. 1817		
158	O. Wade	\$42.00	Oct. 1817		
159	F. Gorin back taxes		Nov. 27, 1835	co	251
160	F. Gorin back taxes		Nov. 27, 1835	co	251
161	F. Gorin back taxes		Nov. 27, 1835	co	251
162	F. Gorin back taxes		Nov. 27, 1835	co	251
163	F. Gorin back taxes		Nov. 27, 1835	co	251
164	F. Gorin back taxes		Nov. 27, 1835	co	251
165	T. B. Monroe	\$150.00	July 1819	co	121
166	John Workman Jr.	\$100.00	Oct. 1817		
167	John Workman Jr.	\$77.00	Oct. 1817		
168	Bush & Gorin	\$75.00	Oct. 1817		
	Henry Clack for taxes of .25¢		Jan. 30, 1839	co	279
	Includes lots 169 & 170.				
169	Bush & Gorin	\$76.00	Oct. 1817		
170	Geo. Rogers	\$90.00	Oct. 1817		
171	O. Wade	bal \$40.00 \$52.00	Oct. 1817		
172	Smith & Matthew	\$10.00	Oct. 1817		
	Bush & Gorin	\$21.00	Oct. 1817		
	F. Gorin back taxes		Nov. 27, 1835	co	251
	Robert B. Hall		Jul. 23, 1838	co	275
173	Obadiah Wade	\$20.00 \$41.00	Oct. 1817		
174	Bush & Gorin	\$55.00	Oct. 1817		
	J. Eubank Jr. taxes		Nov. 27, 1835	co	253
	Deed		Jul. 23, 1838	co	276
175	J. Garnett	\$61.00	Oct. 1817		
	J. Eubank Jr. taxes		Nov. 27, 1835	co	251
	Deed		Jul. 23, 1838	co	276
176	Bush & Gorin	\$60.00	Oct. 1817		
	J. Eubank Jr. taxes		Nov. 27, 1835	co	253
	Deed		Jul. 23, 1838	co	276

June 1818 - Lots 370 thru 428 added.

OUT LOTS

1	John Anderson lots 1, 2 & 3	\$17.50	April 23, 1803	B	27
2	John Anderson		April 23, 1803	B	27
3	John Anderson		April 23, 1803	B	27
4				-	-

TOWN OF GLASGOW - Lot Owners

Lot	Grantee	Price	Date	Book	Page
5	David Walker .....			co	51
	(opposit John Anderson lots)				
	John Terry tax .....		Jan. 1840	co	294
6	John Terry tax .....		Jan. 1840	co	294
7	William Savage .....	5 shillings - 4 acres	Sept. 26, 1811	B	403
	William Savage .....		Sept 20, 1811	co	19
	J. Murrell redemed by D. Miller .....		Dec. 1835	co	256
8	H--- Moss for tax .....		Jan. 07, 1840	co	294
9	John Matthews heirs .....		1815	co	61
	W. T. Bush .....		Sept. 29, 1823	co	150
10	Isaac Robinson original .....			co	150
	W. T. Bush .....		Sept. 27, 1823	co	150
11	Isaac Robinson .....			co	150
	Lewis Franklin .....		Sept. 27, 1823	co	150
	J. Murrell tax S. E. front lot .....		Nov. 27, 1835	co	253
	H. Moss .....		Jan. 1840		
12	Henry Miller .....		April 23, 1803	B	28
13	David Walker .....			co	50
	B. B. Crump back tax .16 .....		Nov. 27, 1835	co	150
	deeds .....		July 23, 1838	co	276
14	.....			-	-
15	H. Moss for tax .....		Jan. 07, 1840	co	294
16	B. B. Crump back tax north west 1/2 of lot. ....		Nov. 27, 1835	co	253
	F. Gorin for taxes .....		Dec. 30, 1835	co	256
	North 1/2 of lot deeded .....		July 23, 1838	co	276
17	John Matthew heirs .....		1815	co	61
	Crump & Bagby back taxes .....		Nov. 27, 1835	co	250
	F. Gorin for taxes .....		Dec. 30, 1835	co	256
	deeds .....		July 23, 1838	co	276
18	B. B. Winn .....	\$21.25	Oct. 17, 18??		
	Crump & Bagby back taxes .....		Nov. 27, 1835	co	250
	F. Gorin for taxes .....		Dec. 30, 1835	co	256
	deeds .....		July 23, 1838	co	276
19	.....	\$ 40.00			
	Crump & Bagby back taxes .....		Nov. 27, 1835	co	250
	F. Gorin for taxes .....		Dec. 30, 1835	co	256
	deeds .....		July 23, 1838	co	276
20	Jas Hatton .....	\$40.00	Oct. 17, 18??		
	Crump & Bagby back taxes .....		Nov. 27, 1835	co	250
	deeds .....		July 23, 1838	co	276
21	Thos. B. Monroe .....	\$52.00	Oct. 17, 18??		
	.....		July, 1819	co	121

The next map of the Glasgow area is a topographical map made in 1863. It is bounded on the North and West by Beaver Creek and extends 2.5 miles South of the Square and 1.7 miles East. This map includes an 8x inset of Ft. Williams, showing details at the time of the Civil War.

The 1879 Barren County map by Beers & Lanagan include an inset of Glasgow. There is also an insets for Cave City, Hiseville, Glasgow Junction (Park City), Rocky Hill, Slick Rock and Flat Head. It also shows all heads of household. 24" x 30 1/2" card stock, for sale by the Society.



## South Central Kentucky Historical and Genealogical Society

Membership and Life Membership for 2005

001	Alvis, Phyllis	1211 W. Jornada St.	Pahrump, NV 89048-7193
002	Anderson, Margaret V.	505 Eagle Bend Rd.	Clinton, TN. 37716-3822
003	Anderson, Susan Renfro	618 E. 10th.	Sedalia, MO. 65301-5938
004	<b>Annis, Russell W.</b>	11112 Orr, NE	Albuquerque, NM. 87111-1860
005	Bailey, Sue Church	3817 Ashridge Dr.	Louisville, Ky. 40241-1652
006	<b>Bailey, Pascal E.</b>	588 Townhill Road	Taylorsville, KY. 40071-9637
007	Bardin, Juanita	501 South Green Street	Glasgow, KY. 42141-2122
008	<b>Bastien, Paul</b>	80 Paul Bastien Ln.	Glasgow, KY. 42141-7880
009	<b>Beam, Maurice E.</b>	1218 Shawnee	Bowling Green, KY. 42104-4257
010	<b>Beard, Ken</b>	1012 Woodlawn Dr.	Glasgow, KY. 42141-2561
011	Beatty, David A., PE	9213 Auburn Ave.	Jeffersontown, KY. 40299-1603
012	Becker, Julia Drane	3890 Crestmont Drive	Santa Maria, CA. 93455-3028
013	Bennett, Dora L.	887 S. Gassaway Rd.	Glasgow, KY. 42141-9744
014	Benningfield, Arland W.	2196 Janlyn Road	Louisville, KY. 40299-1718
015	Berry, Mrs. Gayle	1420 Glenview Dr.	Glasgow, KY. 42141-3513
016	Bertram, Ira H.	211 New Salem Road	Glasgow, KY. 42141-3216
017	Bird, David A.	17802 N. 23rd. Ave.	Phoenix, AZ 85023-2104
018	Bishop, Marlon J.	5008 Tahoka Drive	Grangurg, TX. 76049-5144
019	Bishop, William Sue	2415 Carlford Rd.	Pleasant Garden, NC. 27313-9279
020	Bittorie, Kay	2218 Hidden Woods Blvd.	Beavercreek, Ohio 45431-3392
021	Black, Mrs. Lois Grider	5333 Daniels Drive	Troy, MI 48098-3005
022	Bohlin, Joan	1513 Escondida Court	Santa Fe, NM 87507-5161
023	Borton, Robert	10605 Dry Creek Way	Louisville, KY. 40299-1287
024	Botts, Stephen R.	2220 New Salem Rd.	Glasgow, Ky. 42141-7411
025	Bowles, Edward H., Jr.	241 East 11th. Place	Hobart, IN: 46342-5908
026	Boyd, Mrs. James R.	1545 Shephardsville Rd.	Hodgenville, KY. 42748-9429
027	Brannan, Beverly W.	617 E Street N. E.	Washington, D.C 20002-5229
028	Brents, Walker A., Jr.	7645 Skylake Drive	Fort Worth, TX. 76179-2815
029	Brown, Mrs. Gloria J.	208 Hurst Drive	Old Hickory, TN. 37138-2802
030	Brown, Robert	14A East Burnam Road	Columbia, MO. 65203-3512
031	Burgess, Martha R.	738-D Avenida Majorca	Laguna Hills, CA. 92653-4437
032	Bush, Mrs. Dennis	104 Green Hills Drive	Glasgow, KY. 42141-1423
033	<b>Calhoun, L. E.</b>	10547 Finney Road	Glasgow, KY. 42141-7031
034	<b>Cannon, W. J.</b>	P.O. Box 133	Scottsville, KY. 42164-0133
035	Chamberlain, Mary Ed	224 W. Washington St. Apt. 2	Glasgow, KY. 42141-2451
036	Chambliss, William J.	149 Goodrich Ave.	Lexington, Ky. 40503-1911
037	<b>Chapman, Robert B.</b>	1333 Santa Barbara Blvd Apt. 246	Cape Coral, Fl. 33991-2803
038	Childs, Shelley	8309 Turnbury Dr.	Sacramento, Ca. 95828-5384
039	Christian, Michael A.	4602 Kevin Court	Jeffersonville, IN. 47130-9531
040	Christiansen, Mrs. Betty J.	3621 Georgia N E	Albuquerque, NM 87110-1434
041	Clack, Randall Gene	7902 Farina Way	Indianapolis, IN. 46259-6796
042	Clark, Sharon	3624 Swan Ct.	Fort Worth, TX. 76117-3037
043	<b>Clemons, Marna L.</b>	12120 Mil Pitrero Road	San Diego, CA. 92128-3851
044	Cox, Alan Depp	4519 Oak Chase Ln.	Eagan, MN 55123-1848
045	Cox, Ruth Depp	2711 Mulberry Lane	Greenville, NC. 27858-5846
046	Crabtree, Larry L.	120 West Church Road	Sterling, VA 20164-3803
047	Crabtree, Robert W., Jr.	308 Gwindale Road	Gadsden, AL. 35901-5618

## South Central Kentucky Historical and Genealogical Society

Membership and Life Membership for 2005

048	<b>Cross, Willie G.</b>	122 Vermont Ave.	Cincinnati, OH. 45215-2046
049	<b>Crowe, Joan Thompson</b>	130 Morgan St.	Versailles, KY. 40383-1429
050	Daniels, Anita P.	17617 SE 34th Circle	Vancouver, WA. 98683-8200
051	Dean, Mr. Lloyd	6770 U.S. 60 East	Morehead, KY. 40351-9035
052	Devore, Charlotte	P.O. Box 96	Hardyville, KY. 42746-0096
053	Dewey, Geraldine	988 Missouri Valley Road	Riverton, WY. 82501-9711
054	Dow, Rose Mary	1080 Chinoo Rd.	Lexington, KY. 40502-3098
055	Downing, Susan	65 Erie Crescent	Fairport, NY. 14450-2472
056	<b>Downing, Elizabeth</b>	6314 Ratliff Rd.	Camby, IN. 46113-9226
057	Draper, Norma J.	1734 Old Buck Creek Road	Adolphus, KY. 42120-8771
058	Duvall, Sandra G.	200 Marmak Dr.	Glasgow, KY. 42141-3320
059	Elmore, Mrs. Margaret	115 Sandwood Dr.	Glasgow, KY. 42141-3321
060	<b>Fisher, Thruman E.</b>	P.O. Box 653	Dumas, TX. 79029-0653
061	<b>Fleming, Linda S.</b>	270 1st. Ave. Apt. 6B	New York, NY. 10009-2622
062	Forkan, Janet E.	15235 So. Hamlin Ave.	Midlothian, IL. 60445-3730
063	Freeman, Jo Ann Day	8631 N. 55 Place	Paradise Valley, AZ. 85253-2112
064	<b>Frost, Dr. Michael D.</b>	8910 West 62nd St.	Shawnee Mission, KA. 66202-2814
065	Gaetje, Johanna B.	P.O. Box 41628	Houston, TX. 77241-1628
066	Gaines, Paul	806 Eastside Drive	Horse Cave, Ky. 42749-1820
067	Gardner, Willis W.	2802 Lincolnshire Ct.	Waukesha, WI. 53188-1372
068	Garland, Paul Griffith	2156 Date Palm Road	Boca Raton, FL. 33432-7918
069	Garrison, Ray H.	848 Braemar Road	Flossmoor, IL. 60422-2204
070	Gentry, Margie	2796 Etoile Road	Glasgow, KY. 42141-8619
071	<b>Gilley, David G.</b>	1245 Woodsdale Farm Dr.	Shepherdsville, KY. 40165-5772
072	Goode, Mr. Cecil E.	180 Scottie Drive - Apt 167	Glasgow, KY. 42141-3567
073	Gorin, Sandi	205 Clements	Glasgow, KY. 42141
074	Green, Ray	911 Nelson Dr.	Melbourne, FL. 32940-1799
075	<b>Griffin, Lorraine M.</b>	P.O. Box 25712	Salt Lake City, UT. 84125-0712
076	<b>Hafling, Judy A.</b>	698 Anderson-Perkins Rd.	Edmonton, KY. 42129-9526
077	Hale, James E., Jr.	1855 Sandbar Dr.	Merritt Island, FL. 32953
078	Hamm, Mrs. Jane Turner	3507 Pinecone Circle	Louisville, KY. 40241-2725
079	<b>Harmon, Sandra</b>	2701 Cabernet Way	Rancho Cordova, CA. 95670-4811
080	Harrison, Martha Powell	1786 Capital Hill Church Road	Fountain Run, KY. 42133
081	Head, Carolyn B.	155 Dana Drive	Fayetteville, GA. 30215-3004
082	Henderson, Susan A.	555 Ash Street	Winnetka, IL. 60093-2603
083	<b>Hill, Margaret Lester</b>	489 Middle Gate	Irvington, VA. 22480-2416
084	Hollingsworth, Patricia E.	617 Jacana Court	Mt. Sterling, KY. 40353-8209
085	Hope, Linda L.	5732 Holly Hills Ave.	St. Louis, MO. 63109-3524
086	<b>Houchens, Ruel</b>	100 Longhunters Trail	Glasgow, KY. 42141-1244
087	Houck, Wanda	599 Newlin Court	Lawrenceville, GA. 30045-6240
088	Howard, Mrs. John W.	759 W. Country Road 200 S.	Frankfort, IN. 46041-7637
089	Huffman, Ms. Vicki A.	1433 Parnell Dr.	Eugene, OR. 97404-2887
090	Hull, Mrs. Mary G.	518 Fulton St.	Keokuk, IA. 52632-5632
091	Jackson, Terry	75 Beaver Valley Road	Glasgow, KY. 42141-9727
092	Jameson, Dana L.	6246 N. 750 W.	Frankton, IN. 46044-9692
093	<b>Jewell, Jeffrey</b>	905 Broadfields Drive	Louisville, KY. 40207-4341
094	Jobe, James R.	512 Amberwood Way	Kingston, Georgia 30145-2736



## South Central Kentucky Historical and Genealogical Society

Membership and Life Membership for 2005

095	Jones, Judy Davidson	P.O. Box 237	Tijeras, New Mexico 87059-0237
096	Jones, Mrs. Mary Bridges	108-A Trista Lane	Glasgow, KY. 42141-3481
097	<b>Jones, Robert M.</b>	4411 Lynn Brook Drive	Louisville, KY. 40220-1007
098	Jordan, Mrs. Barbara R.	7617 South New Jersey St.	Indianapolis, IN. 46227-2487
099	Joyce, Brenda	640 Mason St. Apt. 407	San Francisco, CA. 94108-3827
100	<b>Kerley, James</b>	2808 Sparger Road	Durham, NC. 27705-1643
101	King, Ricki	950 65th St.	De Moines, IA 50312
102	Kingrey, Betty A.	8893 Tompkinsville Road	Glasgow, KY. 42141-7810
103	Kingrey, Leonard	3598 Finney Rd.	Glasgow, Ky. 42141-9646
104	Kinslow, Mrs. Walter E.	727 Southfork Road	Glasgow, KY. 42141-7020
105	<b>Kinslow, Earl and Alice</b>	3115 Zartman Road	Kokomo, IN. 46902-2977
106	Kirves, Mrs. Sue C.	57 Towne Park Drive	Lawrenceville, GA 30044-4663
107	Klemm, Mrs. Rachel I.	3104 Radiance Road	Louisville, KY. 40220-1806
108	Kugler, Alice Kinslow	Rt. 1 Box 1060	Cross Timbers, MO. 65634-1060
109	Landers, Egie	4953 Edmonton Road	Glasgow, KY. 42141-9595
110	Landon, Kathleen	4-B Holly House, Bunn Dr.	Princeton, NJ 08540-2806
111	<b>Larkin, Pat</b>	HC 67 Box 10	Whiterocks, UT. 84085-9701
112	Laubenstein, Diana	19126 Liggett Street	Northridge, CA. 91324-2719
113	Lawler, Judy	1098 Lonoke Road	Munfordville, KY. 42765-9228
114	<b>Lawson, Clorine J.</b>	180 Scottie Drive	Glasgow, KY. 42141-3552
115	Lemons, George	7508 Yolanda Dr.	Fort Worth, TX. 76112-4417
116	Lewis, Dean H.	PO Box 94	Medanales, NM. 87548-0094
117	Locke, Carl E.	1618 Highway 215	Brighton, MO. 65617-7128
118	Mallicott, Mary E. Shaw	400 E. Miller Dr. Apt. V.	Jerseyville, IL. 62052-2383
119	Maschmeyer, Suzanne D.	10287 Powderhorn Dr.	Corning, NY. 14830-9437
120	Mayfield, Selma	176 Lecta-Kino Road	Glasgow, KY. 42141-9500
121	McClune, Mary	6130 Belpree Rd.	Amarillo, TX. 79106-3305
122	McCluskey, Linda Martin	104-B Lynn Court	Glasgow, KY 42141-1268
123	McDaniel, Mike	202 Tyne Road	Louisville, KY 40207-3444
124	McMechan, Donna	2511 Atchison Ave.	Lawrence, KS. 66047-2621
125	McMillan, Lena Dolores	6320 Woolwich Dr.	Arlington, TX. 76001-7856
126	McNeese, Mrs. Merle E.	1420 Blackhawk Circle	Granbury, TX. 76048-6349
127	Mesker, Wendell W.	7013 Old Heady Rd.	Louisville, KY. 40299-5209
128	Millikan, Marilyn	1192 N.W. Cherry Drive	Roseburg, OR. 97470-1819
129	Mizell, David E.	11870 Spruce Haven	St. Louis, MO 63146-4818
130	Monroe, Carolyn	4527 Elmstone Ct.	Kingwood, TX. 77345-5401
131	Moore, J. Douglas	5223 E. Tamblo Drive	Phoenix, AZ. 85044-2330
132	Morris, Lindell A.	2423 Fulton Ave.	Davenport, IA. 52803-3720
133	Mosier, Homer D.	6472 Harding Road	Valley Springs, CA. 95252-9437
134	Moss, Gerald E.	2005 Tara Ln.	Lexington, Ky. 40514-5920
135	<b>Murrey, Loretta Martin</b>	1313 Dripping Springs Road	Glasgow, KY. 42141-2258
136	<b>Myers, Mrs. Louella K.</b>	8300 N.W. Barry Rd. #217	Kansas City, MO. 64153-1634
137	Nichols, Elmer W.	2240 Sims Drive	Columbus, IN. 47203-2207
138	Norman, Shirley Ann	500 Cleveland Ave.	Glasgow, KY. 42141-1908
139	Nossem, Ruth M.	306-B Paris Harbor Drive	Paris, TN. 38242-4594
140	Novosel, Mr. Don	105 Indie Circle	Glasgow, KY. 42141-3433
141	Nunn, Lee E.	103 Love St.	Edmonton, KY. 42129-8105

## South Central Kentucky Historical and Genealogical Society

### Membership and Life Membership for 2005

142	Nunnally, Robert A.	103 Crosby St.	Georgetown, TX 78628-4948
143	Pace, Leona	5053 Greybull Ave.	Cheyenne, WY. 82009-5243
144	<b>Paris , Marion</b>	12075 Waterford Lane	Carmel, IN 46033-5501
145	Payne, Wilma Jean	12102 Triple Crown Ct.	Louisville, KY. 40243-2904
146	<b>Peden , James E.</b>	5888 Bowling Green Rd.	Glasgow, KY. 42141-9702
147	Pitchford, Jeanetta	979 Stovall Road	Scottsville, KY. 42164-9333
148	Pitcock, John R.	7110 Rolling Creek Blvd.	Louisville, KY. 40228-1346
149	Pitts, Jennifer Newman	3101 Oak Springs Dr.	Plano, TX 75025-3975
150	<b>Powell, Tonia Trull</b>	613 Willow St.	Mansfield, TX. 76063-2417
151	Prescott, Betty Barlow	7 La Salle Dr.	Bangor, ME. 04401-2533
152	Ramey, William Lewis	138 Village Circle	Glasgow, KY 42141-3400
153	Renick, Barbara Ann	311 Copa de Oro Drive	Brea, CA. 92823-7018
154	Reynolds, Mr. Lerond	1006 Meadow Lane	Cave City, KY. 42127-8848
155	Richey, Robert R.	3019 Franks Road	Clinton, Ohio 44216-9327
156	Richey, Russel Steven	RR1 Box 43K	Farmer City, IL. 61842-9722
157	<b>Riddle , William R.</b>	429 Arballo Drive	San Francisco, CA. 94132-2162
158	Riherd, Mrs. Shelley T.	77 Steeplechase Rd.	Glasgow, Ky. 42141-9068
159	Rodgers, Annie K.	716 East Main Street	Glasgow, KY. 42141-2734
160	Ruby, Nell E.	9099 West Brass Lake Rd.	Irons, MI 49644-9018
161	<b>Ryback, Mrs. Clarice</b>	1826 Foothill Ave.	Schofield, Wi. 54476-4848
162	Sawyer, Mrs. Noni	37071 Tovey Ave.	Palmdale, CA. 93551-7831
163	Schwartz, Ann Voges	7508-36th Avenue	Moline, IL. 61265-8019
164	Sevier, Pam	3260 Dogwood Ln.	Algood, TN. 38506
165	Shafer, Helen Sue	8 South 27th Street	Richmond, IN. 47374-5808
166	Shaw, Catherine M.	875 Dry Run Road	Beech Creek, PA. 16822-8022
167	<b>Sides , Stanley D.</b>	2014 Beth Drive	Cape Girardeau, MO. 63701-1810
168	Sieli, Shirl Hite	P.O. Box 262214	Littleton, CO. 80163-2214
169	Simmons, Rollin & Mary Ann	3010 Burkesville Rd.	Glasgow, KY 42141-8319
170	Slife, Donald R.	11189 W. Tulane Ave	Littleton, CO. 80127-1005
171	<b>Smith, Randolph N.</b>	P.O. Box 247	Burksville, KY. 42717-0247
172	<b>Smith , Ruby Jones</b>	917 Meadowood Ln.	Bowling Green, KY. 42104-4335
173	Steenbergen, Julian	8402 Zier Road	Yakima, WA. 98908-9238
174	Stone, Irene Dickerson	R.R.#1	Sedgwick, KS. 67135
175	Strader, Mrs. Sarah R.	3623 Harper's Ferry Drive	Stockton, CA. 95219-3656
176	Talbott, Chrystal B.	P.O. Box 6497	Maryville, TN. 37802-6497
177	Taylor, Joe D. & Sandra	399 Cedar Grove Church Road	Glasgow, KY. 42141-8234
178	Taylor, Joe E.	1980 Oil Well Rd.	Glasgow, KY. 42141-8231
179	Teevan, Alice	2935 Dayton Xenia Rd.	Beavercreek, OH. 45434-6357
180	Templin, Barbara A.	11559 Woodbridge Blvd.	Seminole, FL. 33772-2209
181	<b>Terry , Samuel</b>	705 Leslie Ave.	Glasgow, KY. 42141-2114
182	Thomas, Mrs. Eva M.	1014 S. 24th ST.	Lafayette, IN. 47905-1633
183	Tobin, Charles Robert	1615 Belmont St.	N. Los Vegas, NV. 89030-7263
184	Toole, Patricia R.	6647 Harding St.	Taylor, MI 48180-1829
185	Triplett, Carolyn	9481 W. Co. Rd. 300 S	Dunkirk, IN. 47336-9008
186	Tyler, Nancy Sterling	6031 Lloyd Ct.	Dallas, TX. 75252-2676
187	Vance, Lawrence L.	3740 Scottsville Road	Glasgow, KY. 42141-8212
188	Wade, Dorothy E.	2096 Burksville Road	Glasgow, KY. 42141-8352



## South Central Kentucky Historical and Genealogical Society

Membership and Life Membership for 2005

189	Walker, Sandra Bewley	2331 Old Ida Rd.	Sherman, TX 75090-7424
190	Weidner, Dorothy Pendleton	312 Heather Drive	Heyworth IL. 61745-9215
191	West, Ms. Marjory H.	4017 W. Hayward Ave.	Phoenix, AZ. 85051-5749
192	<b>White, John J.</b>	4039 River Cliff Chase	Marietta, GA. 30067-4742
193	Whitehead, Pam Monroe	922 NW 11th Ave. Apt. 504	Portland, OR. 97209-2777
194	Wilkes, Chester P.	11626 Lida Rose	San Antonio, TX. 78216-3016
195	Wills, Mrs. Nancy F.	20617 Parkside Circle	Potomac Falls, VA. 20165-7512
196	<b>Wilsdon, Diane C.</b>	1175 W. Baseline Rd.	Claremont, CA. 91711-2199
197	Wilson, Leight M.	9114 Glover Ln.	Louisville, Ky. 40242-3324
198	Wilson, Taylor	4783 Radio Station Road	Tompkinsville, KY. 42167-8552
199	Wood, Mrs. Ruth Bridges	156 Lohden Road	Glasgow, KY. 42141-3520
200	<b>Wright, Sophia</b>	8506 Gregory Way	Louisville, KY. 40219-5238
201	Young, Wayne	115 Garmon Ave.	Glasgow, KY. 42141-1515
202	<b>Zablatnik, Linda A.</b>	3200 Hickory Stick Road	Oklahoma City, OK. 73120-5501

### Current E-mail addresses listed with membership.

---

001	Alvis, Phyllis	pbalvis@wizard.com
004	Annis, Russell W.	bettyannis@aol.com
005	Bailey, Sue Church	suewue@aol.com
010	Beard, Ken	kbeard@glasgow-ky.com
012	Becker, Julia Drane	julieart@webtv.net
017	Bird, David A.	dave-nina.bird@cox.net
019	Bishop, William Sue	wbishop56@hotmail.com
020	Bittorie, Kay	j-k.bittorie@att.net
022	Bohlin, Joan	joanbohlin@aol.com
025	Bowles, Edward H., Jr.	edbowles@aol.com
028	Brents, Walker A., Jr.	wbrents@flash.net
029	Brown, Mrs. Gloria J. Wilson	brownmw@bellsouth.net
031	Burgess, Martha R.	marthabe@1world.net
032	Bush, Mrs. Dennis	n.bush@glasgow-ky.com
036	Chambliss, William J.	wcham3@qx.net
038	Childs, Shelley	dch1576744@aol.com
040	Christiansen, Mrs. Betty J.	bjnci@worldnet.att.net
041	Clack, Randall Gene	rg@clack.us
042	Clark, Sharon	clarksha@swbell.net
044	Cox, Alan Depp	neecox@mail.mntner.net
047	Crabtree, Robert W., Jr.	crabby@peop.tdsnet.com
050	Daniels, Anita P.	apdaniels1@msn.com
051	Dean, Mr. Lloyd	mapleview@connectup.com
052	Devore, Charlotte	cwdevore@scrctc.com
053	Dewey, Geraldine	jdewey@tcinc.net
055	Downing, Susan	downing65@hotmail.com
057	Draper, Norma J.	draper@nctc.com
058	Duvall, Sandra G.	sduvall@glasgow-ky.com
063	Freeman, Jo Ann Day	freeman@futureone.com
067	Gardner, Willis W.	vakyilwi@execpc.com

## South Central Kentucky Historical and Genealogical Society

### Membership and Life Membership for 2005

068	Garland, Paul Griffith	Griftylaw@aol.com
069	Garrison, Ray H.	rhgarrison@juno.com
070	Gentry, Margie	margiegentry@scrtc.com
071	Gilley, David G.	dave16@bellsouth.net
073	Gorin, Sandi	sgorin@glasgow-ky.com
075	Griffin, Lorraine M.	lorrainemgriffin@worldnet.att.net
078	Hamm, Mrs. Jane Turner	clydehamm@bellsouth.net
080	Harrison, Martha Powell	hharrison@scrtc.com
081	Head, Carolyn B.	CaBaHead@aol.com
084	Hollingsworth, Patricia E.	pat1218@mrta.com
087	Houck, Wanda	houck-james@hotmail.com
090	Hull, Mrs. Mary G.	maryghul@interlinklc.net
092	Jameson, Dana L.	cjj841@netdirect.net
094	Jobe, James R.	rjobe@mudspring.com
095	Jones, Judy Davidson	jones.lp@worldnet.att.net
099	Joyce, Brenda	icebrenda@yahoo.com
101	King, Ricki	RickiKing@mchsi.com
102	Kingrey, Betty A.	kinglittlebit@caveland.net
103	Kingrey, Leonard	lkingrey@scrtc.com
105	Kinslow, Earl and Alice	eandakinslow@aol.com
106	Kirves, Mrs. Sue C.	Kirves@bellsouth.net
107	Klemm, Mrs. Rachel I.	rik926@aol.com
108	Kugler, Alice Kinslow	jmbwmb@yahoo.com
113	Lawler, Judy	jlawler@mchsi.com
115	Lemons, George	lemonsg@charter.net
116	Lewis, Dean H.	deanlewis@cybesmesa.com
119	Maschmeyer, Suzanne D.	roots@stny.rr.com
121	McClune, Mary	marymac@arn.net
127	Mesker, Wendell W.	wenmesker@aol.com
128	Millikan, Marilyn	millikan@rosenet.net
130	Monroe, Carolyn	cmonroe111@yahoo.com
131	Moore, J. Douglas	moore@asu.edu
132	Morris, Lindell A.	lamorris@msn.com
134	Moss, Gerald E.	gbmoss@alltel.net
142	Nunnally, Robert A.	robertannunnally@verison.net
144	Paris, Marion	mparis@indy.rr.com
145	Payne, Wilma Jean	wibbaone@aol.com
149	Pitts, Jennifer Newman	me@meoz.net
150	Powell, Tonia Trull	tpowell@arlington.net
151	Prescott, Betty Barlow	betbarlow@aol.com
152	Ramey, William Lewis	rameybill@hotmail.com
153	Renick, Barbara Ann	barb@zroots.com
155	Richey, Robert R.	lr7830@aol.com
156	Richey, Russel Steven	SRichey543@aol.com
160	Ruby, Nell E.	mamason@triton.net
162	Sawyer, Mrs. Noni	oldnoni@cs.com
164	Sevier, Pam	psevier@tnaccess.com



## South Central Kentucky Historical and Genealogical Society

Membership and Life Membership for 2005

165	Shafer, Helen Sue	suz@globalsite.net
166	Shaw, Catherine M.	cmshaw@csrlink.net
168	Sieli, Shirl Hite	shineon101@aol.com
174	Stone, Irene Dickerson	irenes@southwind.net
176	Talbott, Chrystal B.	cbt70@bellsouty.net
179	Teevan, Alice	ateevan@earthlink.net
180	Templin, Barbara A.	jtempl1@tampabay.rr.com
182	Thomas, Mrs. Eva M.	eth3626423@aol.com
183	Tobin, Charles Robert	bobcrtvan1@earthlink.net
184	Toole, Patricia R.	toolep@mail.wcresa.k12.mi.us
185	Triplett, Carolyn	ctripl1701@aol.com
186	Tyler, Nancy Sterling	tylertwo@earthlink.net
188	Wade, Dorothy E.	dew@scrtc.com
191	West, Ms. Marjory H.	wgraveyardlady@aol.com
192	White, John J.	john-jeanne-white@worldnet.att
193	Whitehead, Pam Monroe	pamilaw@comcast.net
194	Wilkes, Chester P.	cwilkes@satx.rr.com
197	Wilson, Leight M.	wkudad@aol.com

### 2005 Library Membership

Allen County Public Library	Box 2270	Ft. Wayne, IN. . . . .	46801-2270
Dallas Public Library - Serials	1515 Young St.	Dallas, TX. . . . .	75201-5499
Genealogical Society of Utah	50 E. North Temple St.	Salt Lake City, UT. . . . .	84150-3400
Helm Cravens Library	1906 College Hts Blvd	Bowling Green, KY. . . . .	42101
Lexington Public Library	140 East Main St.	Lexington, KY. . . . .	40507-1318
Public Library of Cincinnati	800 Vine Street	Cincinnati, OH. . . . .	45202-2009
Tennessee State Library & Arch.	403 Seventh Ave. N.	Nashville, TN. . . . .	37243-1409
State Historical Soc. of Wisconsin	816 State Street	Madison, WI. . . . .	53706-1482

**REMINDER.... TIME TO RENEW  
YOUR MEMBERSHIP.... FOR 2006!**

**IF YOUR MEMBERSHIP EXPIRES AT THE END OF 2005,  
A RENEWAL MEMBERSHIP NOTICE WILL BE ENCLOSED.**

## South Central Kentucky Historical and Genealogical Society

Winter 2005

### Surname Research Index

The following is an index of surnames from South Central Kentucky that are of interest or are being researched by current members. Match the numbers with the membership listed above.

Abner . . . . . 152	Blakey . . . . . 79, 195	Cassort . . . . . 78	Curtice . . . . . 92
Adwell . . . . . 143	Borders . . . . . 127	Chamberlain . . . . . 35	Curtis . . . . . 92
Alderson . . . . . 79	Botts . . . . . 24, 70	Chambers . . . . . 31	Dale . . . . . 5, 68
Alexander 69, 78, 117	Bowles . . . . . 25	Chandler . . . . . 79	Dalton . . . . . 78
Allen . . . . . 7, 84	Bowman . . . . . 1	Chapman . . . . . 162	Daniel . . . . . 126
Alley . . . . . 3	Boyd . . . . . 26	Charlton . . . . . 125	Davidson . . . . . 119
Amos . . . . . 194	Bradley . . . . . 41, 63	Cheatham . . . . . 1	Davis . . . . . 79
Anderson 78, 185, 198	Bradshaw . . . . . 60	Childress . . . . . 35	Davison . . . . . 119
Ashley . . . . . 143	Brady . . . . . 81	Christmas . . . . . 196	Dean . . . . . 51, 101
Ashlock . . . . . 117	Brandon . . . . . 29	Church . . . . . 5, 63	Dearing . . . . . 68
Atterbury . . . . . 200	Bransford . . . . . 149	Clack . . . . . 41, 63	Defevers . . . . . 82
Atwell . . . . . 122	Branstetter . . . . . 100	Clark . . . . . 5, 7, 32	Delph . . . . . 63
Austin . . . . . 70	Bratcher . . . . . 60	Clarke . . . . . 190	Denney . . . . . 78
Bagby . . . . . 101, 180	Bridges 27, 96, 105, 199	Clary . . . . . 92	Denton . . . . . 144
Bailey . . . . . 150, 165, 170	Brinegar . . . . . 51	Clayton . . . . . 12, 119	Depp . . . . . 45
Baird . . . . . 36	Britt . . . . . 14, 059, 165	Claywell . . . . . 156	Devore . . . . . 122
Baker . . . . . 78, 156	Brittain . . . . . 160	Cleary . . . . . 92	Dicken . . . . . 78
Ball . . . . . 79	Broady . . . . . 101, 179	Clemens . . . . . 43	Dickens . . . . . 101
Barbour . . . . . 26, 74	Brooks . . . . . 1	Clements . . . . . 32, 43	Dickerson . . . . . 174, 175
Barclay . . . . . 117	Browning 29, 39, 78, 131	Clemmons . . . . . 43	Dickinson . . . . . 70, 192
Bardin . . . . . 7	Brummall . . . . . 78	Clemons . . . . . 43	Dickson . . . . . 29
Barlow . . . . . 151	Bryant . . . . . 196	Clymer . . . . . 4	Dillard . . . . . 148
Barrons . . . . . 113	Buckley . . . . . 14	Cobb . . . . . 156	Dilley . . . . . 165
Barry . . . . . 79	Buley . . . . . 189	Coffey . . . . . 134	Dilliard . . . . . 148
Bartlett . . . . . 70	Bullock . . . . . 160	Collins . . . . . 101	Dodd . . . . . 12, 119, 160
Bartley . . . . . 24, 133, 138	Bulls . . . . . 60	Combs . . . . . 70	Dorsey . . . . . 37
Basham . . . . . 125	Buly . . . . . 189	Compton . . . . . 10, 23, 175	Dossey . . . . . 37, 115
Bass . . . . . 26	Bunnell . . . . . 79	Cooksey . . . . . 52, 105	Dotson . . . . . 10
Beam . . . . . 9	Burch . . . . . 101	Coombs . . . . . 12	Doyel . . . . . 49, 199
Beard . . . . . 10, 143	Burd . . . . . 194	Coomer . . . . . 134, 134, 198	Doyle . . . . . 27, 43, 49, 199
Beasley . . . . . 110	Burgess . . . . . 31	Copas . . . . . 132	Drane . . . . . 12
Beatty . . . . . 11	Burks . . . . . 117	Cox . . . . . 24	Duff . . . . . 42, 186
Beazly . . . . . 110	Burnett . . . . . 78	Crabtree 46, 47, 99, 182	Dunnigan . . . . . 110
Bell . . . . . 40	Burris . . . . . 134	Craddock . . . . . 79	Dunnign . . . . . 110
Berry 5, 35, 63, 79, 175	Burton . . . . . 78, 194	Craighead . . . . . 97	Durham . . . . . 127
Bertram . . . . . 165	Bush 21, 79, 173, 200	Crain . . . . . 176	Dyer . . . . . 198
Bewley . . . . . 189	Butler . . . . . 42, 79, 157	Crawford . . . . . 70	Earp . . . . . 26
Bibb . . . . . 82	Calhoun . . . . . 33	Creech . . . . . 51	Eaton . . . . . 182, 191
Biles . . . . . 29	Cardoza . . . . . 156	Crockett . . . . . 117	Edmunds . . . . . 195
Bird . . . . . 194	Carter . . . . . 84, 119,	Crump . . . . . 26, 113	Edwards . . . . . 79,
Birge . . . . . 57, 182, 182	124, 145, 160, 191, 200	Crumpton . . . . . 57	116, 117, 126, 165, 194
Bishop . . . . . 18, 19	Carver . . . . . 186	Cummingham . . . . . 79	Elliot . . . . . 79
Blair . . . . . 66	Cash . . . . . 133, 143	Curry . . . . . 202	Elmore . . . . . 93



## South Central Kentucky Historical and Genealogical Society

Winter 2005

Emersons . . . . .	185	Gilpin . . . . .	66	Hickey . . . . .	78	Kerley . . . . .	100
Emmert . . . . .	94	Glass . . . . .	143, 182	Hide . . . . .	168	Key . . . . .	101
Emmit . . . . .	150	Glover . . . . .	101	Higdon . . . . .	196	Kidd . . . . .	137, 176
England . . . . .	81, 88, 150	Gooch . . . . .	79	Hight . . . . .	168	Kidwell . . . . .	78
Erwin . . . . .	79	Goodall . . . . .	26	Hill . . . . .	35	Kincheloe . . . . .	108
Estes . . . . .	7	Goodman . . . . .		Hite . . . . .	168	King . . . . .	26, 83, 101, 195
Eubank . . . . .	42, 149		18, 27, 108, 115	Hodge . . . . .	144	Kinnaird . . . . .	134
Fant . . . . .	79	Goodmon . . . . .	115	Holley . . . . .	125	Kinshalo . . . . .	108
Faris . . . . .	144	Goodnight . . . . .	186	Holman . . . . .	25, 63, 150	Kinslow . . . . .	
Farris . . . . .	10, 195	Gorin . . . . .	73, 126	Hood . . . . .	70		75, 93, 105, 108, 151
Farthing . . . . .	30	Gowdey . . . . .	26	Horton . . . . .	43	Kirkpatrick . . . . .	131
Ferguson . . . . .	42, 62, 71	Grady . . . . .	79	Houchin . . . . .	43, 196	Lacefield . . . . .	190
Ferris . . . . .	150	Gragar . . . . .	79	Houk . . . . .	79	Lafferty . . . . .	79
Fields . . . . .	51	Gramlin . . . . .	74	Howard . . . . .	88, 101	Landrum . . . . .	
Finn . . . . .	168	Grant . . . . .	126	Howe . . . . .	117		27, 79, 186, 199
Fishback . . . . .	195	Green . . . . .	20, 74	Huckaby . . . . .	108	Laswell . . . . .	190
Fishburn . . . . .	12	Greer . . . . .	59	Hudson . . . . .	150	Laughery . . . . .	73
Fisher . . . . .	60, 79, 115, 165	Grider . . . . .	185	Huff . . . . .	4, 11, 26	Lawler . . . . .	101
Fitzgerald . . . . .	176	Grogan . . . . .	79	Huffman . . . . .		Lawrence . . . . .	184
Flannery . . . . .	101	Grubbs . . . . .	29, 173		11, 14, 41, 89, 132, 195	Lawson . . . . .	150
Flanray . . . . .	101	Guinn . . . . .	193	Hughes . . . . .	127	Leach . . . . .	70, 150
Flatt . . . . .	5	Gutneckt . . . . .	186	Hull . . . . .	101	Lee . . . . .	150, 189
Flint . . . . .	71	Guzzle . . . . .	79	Hulsey . . . . .	89	Leeper . . . . .	3
Ford . . . . .	29, 81	Hale . . . . .	77	Humphrey . . . . .	157, 185	Levi . . . . .	155
Foster . . . . .	14, 119	Hall . . . . .	29, 81, 143, 153	Hunt . . . . .	135, 173, 195	Lewis . . . . .	19, 57, 119, 175
Fowler . . . . .	125	Hamilton . . . . .	41, 134	Hunter . . . . .	113	Littrell . . . . .	78
Francis . . . . .	127	Hammer . . . . .	160	Hurt . . . . .	150	Locke . . . . .	117
Franklin . . . . .	73, 126, 143	Harbison . . . . .	151	Hyde . . . . .	168	Loeser . . . . .	179
Freeman . . . . .	26, 63, 97	Hardwick . . . . .	118	Isaacs . . . . .	39	Logsdon . . . . .	
French . . . . .	26	Hardy . . . . .	116, 194	Isenberg . . . . .	70		5, 093, 195, 200
Friend . . . . .	187	Harlow . . . . .	39, 187	Jackman . . . . .	135, 160	Long . . . . .	138, 185
Frost . . . . .	69	Harper . . . . .	79	Jackson . . . . .	150, 156	Lorvell . . . . .	70
Furlong . . . . .	19	Harrison . . . . .	21, 60	Jaggers . . . . .	200	Love . . . . .	7
Galloway . . . . .	98	Harston . . . . .	78, 79	James . . . . .	27, 199	Lowe . . . . .	47, 117
Gardner . . . . .	27, 79, 187, 199	Harvey . . . . .	71	Jameson . . . . .	83	Luster . . . . .	11
Garrison . . . . .	69	Haskins . . . . .	79	Jenkins . . . . .	100	Lyons . . . . .	70, 105
Garth . . . . .	78	Hatcher . . . . .	7, 79	Jett . . . . .	117	Mailey . . . . .	6
Gearhart . . . . .	78	Hatchett . . . . .	7	Jewell . . . . .	79, 93	Malone . . . . .	84
Gee . . . . .	131	Hawkins . . . . .	30, 160	Jobe . . . . .	94	Manley . . . . .	184
Gentry . . . . .	70	Hayes . . . . .	41, 112	Johnson . . . . .	112, 137, 160	Mansfield . . . . .	31, 75
Gerald . . . . .	88, 176	Hayslip . . . . .	149	Jones . . . . .	10, 39, 78,	Marrs . . . . .	14
Gibbs . . . . .	191	Heard . . . . .	78		88, 97, 127, 131, 192	Marshall . . . . .	145
Gibson . . . . .	79	Henderson . . . . .	79	Jordan . . . . .	37, 195	Martin . . . . .	
Gilley . . . . .	71, 174	Hensley . . . . .	32, 137	Keel . . . . .	150		79, 122, 138, 176, 195
Gilliam . . . . .	150	Herndon . . . . .	27	Keen . . . . .	69, 101	Mathers . . . . .	68
Gillock . . . . .	173	Herring . . . . .	112	Kelley . . . . .	88	Matney . . . . .	20
Gilmore . . . . .	42	Hestand . . . . .	133	Kelly . . . . .	51, 145, 202	Matthews . . . . .	

## South Central Kentucky Historical and Genealogical Society

Winter 2005

6, 46, 62, 99, 139	Oliphant	184	Ramey	152	Shores	78
Maxey . 128, 131, 192	Oliver	70	Rashall	144	Sibley	40
Mayo	Overfelt	79	Ratliff	10, 053	Sikes	156
McAdams .. 191, 200	Owens .. 79, 116, 117		Ready	83	Simmons	66, 71
McDonald	Owsley	78	Reams	195	Slemmons	39
McGary	Pace	143, 165	Reece	71	Slinker	98, 122
McGavock	Page	79	Reeves	12	Small	78
McGuire	Pare	27, 35, 96	Reid	132	Smith . 11, 31, 70, 079,	
McKibben	Parker	27	Reneau	50	118, 132, 144, 195, 196	
Meads	Parrish	26, 119	Renfro	3, 175	Snoddy	149
Medley	Paull	1	Renick .. 63, 153, 180		Snowden	175
Mesker	Payne	108, 125, 135, 145	Rennick	131	Sorrell	160
Miller	Peace	78	Rhea	12	Speakman	70
Mitchell	Peak	3, 175	Rice	83	Spearman	1, 101
Mize	Peden	31, 139, 165	Richey	155, 156	Spears	18
Mocabee	Pedigo	71, 79, 165, 193	Richmond	96, 199	Spencer	180
Monroe	Peek	3	Riddle	157	Spenser	101
Moore	Peers	26, 133	Rigney	79	Spilman	42
Moran	Pell	73	Rigsby	168	Squires	79
Moris	Pemberton	54	Riherd	160	Staggs	133
Morris	Pendleton	190	Ritter	12, 145, 166, 202	Stark	79
Morrison	Perkins	150, 156, 193	Roberts	7, 054	Starr	46
Morrow	Petty	127, 184	Robinson	88	Steenbergen	62
Morton	Phares	144	Rogers	36, 40, 156	Steenburgen	173
Mosier	Phelps	39	Rollins	127	Steffey	160
Moss	Phillips	1	Rose	150	Stephens	190
Munday	Pinkley	173	Ross	78	Stewart	92
Munford	Pitcock	70, 148	Rowland	78	Stinnet	119
Murley	Planck	51	Rucker	26	Stinson	29
Murphey	Pointer	162, 193	Runyon	165	Stone	33
Murrell	Ponter	6	Russell	79, 179	Stout	14, 39, 139
Myers	Pope	131	Rutherford	39	Stovall	78, 175
Nabors	Porter	153	Sanders	35	Strange	43
Nance	Powell	14, 21	Sanderson	83	Strode	156
Naylor	Poynter	75, 125	Schmidt	11	Sturgeon	5, 200
Neathery	Preston	31	Scholl	144	Summers	101
Nelson	Prewitt	160	Scoggins	118	Sykes	156
Nesbit	Price	78	Scott	79	Tapscott	162
Newsom	Priest	83	Scrimager	152	Tate	78
Newson	Proffett	70	Sears	79	Taylor .. 23, 196, 200	
Nichols	Proffitt	23	Sego	200	Thaxton	69
Norris	Puckett	128	Settles	27, 42, 150, 199	Thomas	51, 168
Nuckels	Pulliam	78	Sexton	23	Thomasson	148
Nunnally	Puryear	25	Sharp	165	Thomerson	148
O'Bannon	Pyle	73	Shaw	83, 118	Thompson	49
O'Neal	Ragsdale	7	Shields	168	Thurman	1, 182
Oldham	Ralston	175	Shipley	99	Toms	193



## South Central Kentucky Historical and Genealogical Society

Winter 2005

Tosh . . . . . 179	Walker . . . . . 134, 198	79, 131, 185, 192, 195	Witty . . . . . 150
Tribble . . . . . 31	Wallace . . . . . 175, 190	Whitley . . . . . 79	Wood 36, 92, 115, 189
Trull . . . . . 150	Walters . . . . . 83	Whitman . . . . . 153	Woodcock . . . . . 141
Turk . . . . . 84	Waller . . . . . 63, 160	Whitney . . . . . 63, 79	Workman . . . . . 7
Turner 54, 78, 79, 138	Walton . . . . . 29, 179, 193	Wilhelm . . . . . 79	Wright . . . . . 144
Underwood . . . . . 4	Warren . . . . . 200	Wilkerson . . . . . 165, 200	Wynn . . . . . 51
Vance . . . . . 187	Weaver . . . . . 127	Williamson . . . . . 39	Wynne . . . . . 110
Vanhook . . . . . 143	Webb . . . . . 138, 156	Willis . . . . . 26	Yancy . . . . . 195
Vaughn . . . . . 79	Welch . . . . . 77	Wilson . . . . . 29,	Yates . . . . . 190
Veluzat . . . . . 193	Wells . . . . . 27, 79	79, 112, 145, 198, 202	Young . . . . . 52, 63, 78
Vernon . . . . . 50	West . . . . . 7, 191	Winfrey . . . . . 84	Zackery . . . . . 198
Waddell . . . . . 195	Westmorland . . . . . 198	Winn . . . . . 25, 110	
Wade . . . . . 40, 82, 89	Whitaker . . . . . 126	Withers . . . . . 29	
Waggener . . . . . 79	White . . . . . 11, 78,	Witt . . . . . 12	

### Gift Membership 2005

Glasgow Christian Academy	601 Calvery Drive	Glasgow, Ky. 42141
Austin Tracy School	247 Austin Tracy Road	Lucas, Kentucky 42156-9313
Barren County High School	507 Trojan Trail	Glasgow, Kentucky 42141-2214
Eastern Elementary School	4601 New Salem Road	Glasgow, Kentucky 42141-9422
Glasgow High School	1601 Columbia Ave.	Glasgow, Kentucky 42141-3333
Glasgow Middle School	104 Scottie Dr.	Glasgow, Kentucky 42141-3518
Hiseville School	Cardinal Boulevard	Hiseville, Kentucky 42152
Library of Congress	10 First St. SE	Washington, DC 20540
Mary Wood Weldon Memorial Library	107 West College St.	Glasgow, Kentucky 42141-2423
Park City School	P.O. Box 247	Park City, Kentucky 42160-0247
Red Cross School	215 Parkview Drive	Glasgow, KY. 42141-5005
Temple Hill School	8788 Tompkinsville Road	Glasgow, Kentucky 42141-8824
Phillip Patton	907 Pritchardsville Road	Glasgow, KY. 42141-8217
Ernie Myers	115 Windsor Avenue	Glasgow, KY. 42141
James M. Nelson	3047 Dripping Springs Rd.	Glasgow, KY. 42141-9708
John Nelson	1331 Finney Rd.	Glasgow, KY. 42141-8702
Darrell G. Pickett	113 Woods Dr.	Glasgow, KY. 42141
Rhonda Trautman	289 Winners Circle	Glasgow, KY. 42141

## South Central Kentucky Historical and Genealogical Society

Winter 2005

### Exchange Membership 2005

Adair Co. Gen. Society	P.O. Box 613	Columbia, KY. 42728-0613
Alva Public Library	504 7th Street	Alva, OK. 73717-2228
Butler Co. Hist. & Gen. Soc.	P.O. Box 435	Morgantown, KY. 42261-0435
Decatur Genealogical Society	P.O. Box 1548	Decatur, IL. 62525-1548
Fort Worth Genealogical Society	P.O. Box 9767	Ft. Worth, TX. 76147-2767
Gene. Society of Central Missouri	P.O. Box 26	Columbia, M.O. 65205-0026
Green Co. Historical Society	P.O. Box 276	Greensburg, KY. 42743-0276
Harrodsburg Historical Society	220 South Chiles Street	Harrodsburg, KY. 40330-0316
Hart Co. Historical Society	P.O. Box 606	Munfordville, KY. 42765-0606
Hoosier Gene. - Indiana Hist. Soc.	450 W. Ohio Street	Indianapolis, IN. 46202-3269
Hopkins County Gene. Society	P.O. Box 51	Madisonville, KY. 42431-0051
Hopkins County Genealogical Soc.	P.O. Box 624	Sulphur Springs, TX. 75482-0624
Kin Hunters, Gene. Publications	P.O. Box 515	Russellville, KY. 42276-0515
Ky. Genealogical Society	P.O. Box 153	Frankfort, KY. 40602-0153
Louisville Genealogical Society	P.O. Box 5164	Louisville, KY. 40255-0164
Macon County Historical Society	4233 Green Grove Rd.	Hartsville, TN. 37074-5047
Metcalf Co. Historical Society	P.O. Box 910	Edmonton, KY. 42129-0910
Muhlenberg Co. Gen. Society	117 S. Main St.	Greenville, KY. 42345-1710
Northumberland Co. Hist. Society	P.O. Box 221	Heathsville, VA. 22473-0221
NSDAR Library	1776 D Street, NW	Washington, DC. 20006-5392
Old Buncombe Co. Gene. Society	P.O. Box 2122	Ashville, NC. 28802-2122
Pellissippi Genealogical Society	118 Hicks Street	Clinton, TN. 37716
Simpson Co. Historical Soc., Inc	206 N. College St.	Franklin, KY. 42134-1826
Southern California Gene. Society	417 Irving Drive	Burbank, CA. 91503-4377
Southern Indiana Gene. Society	P.O. Box 665	New Albany, IN. 47150-0665
Southern Ky Genealogical Society	P.O. Box 1782	Bowling Green, KY. 42102-1782
Southwestern Va. Genealogical Soc.	P.O. Box 12485	Roanoke, VA. 24026-2485
St. Louis Genealogical Society	P.O. Box 43010	St. Lewis, MO. 63143-0010
Surry Co. Genealogical Assoc.	P.O. Box 997	Dodson, NC. 27017-0997
Taylor Co. Historical Society	P.O. Box 14	Campbellsville, KY. 42719-0014
The Fislon Club	1310 South Third St.	Louisville, KY. 40208-2306
Va-N.C. Piedmont Genealogical Soc.	P.O. Box 2272	Danville, VA. 24541-0272
Watauga Association of Genealogists	P.O. Box 117	Johnson City, TN. 37605-0117
West Central Family Research Assoc.	P.O. Box 1932	Owensboro, KY. 42301-1932

### IN MEMORY OF RALPH R. GARMON

We offer the condolences of the Society to the family of Ralph R. Garmon who died November 3, 2005. Ralph was long connected with the Society and will be missed dearly by all. He was born in Cumberland Co, son of Linder and Lucy Carter Garmon. Ralph was a former school teacher and farmer there; a member of the Marrowbone Baptist Church, and a U. S. Army veteran of WWII, receiving two Purple Hearts. Services were held at A. F. Crow & Son Funeral Home in Glasgow with burial in the Marrowbone Cemetery.



### CYCLONE TAKES 12 LIVES

As reported in the *Tompkinsville News*, Thursday, May 11, 1933.

"Cyclone takes 12 lives - disaster injures 40; Negro section destroyed.

"Churches open to receive maimed, dead: Family wiped out. Twelve known dead and forty injured bore witness of a cyclonic storm which Tuesday night laid bare a path about a quarter of a mile wide across the south edge of Tompkinsville. Some damage was done as far as six miles west and three miles east of town. Eight white and four colored comprise the death list. Fifteen white and twenty-five colored are injured. Rev. and Mrs. Roy Redeford, Northern Methodist minister, and their only child are all dead. Mrs. Travis Tyree and two children are among the dead, white Mr. Tyree and another child are injured. Westerfield Anderson and Mrs. Jimmie Coulter are the other two white fatalities. The colored dead are William Bailey, Miami Fraim, Maymie Maxey, and Clara Hamilton, the latter a visitor from Celina Tenn. Only three houses in the Kingdom were left standing, and two of these are unroofed.

Mrs Ed Turner and Mrs. Jyner Blakenship, in Sampson Community Hospital, were living at 2 p.m. Wednesday, but in a precious condition. The conditions of Mrs. Vincent Sewell, Miss Irene Turner and Mr. Ed Turner were considered grave. Others injured were: Mrs. Sanford Crowe, Kenneth Goad, Raymond Goad, Mrs. Raymond Goad, Travis Tyree and child, Robert Sewell, Elizabeth Sewell, Jimmie Coulter and Rube Dodson. With minor injuries, and injuries likely to prove fatal, twenty-five colored people were treated Tuesday night and Wednesday. They are: Riggs Bailey, Gilbert Bennett, Bro and Sister G. W. Craig, Garnett Fraim, Margaret Fraim, Clarence Graves, Martha Ann Graves, Earline Graves, Jesse Graves, Benton Maxey, Mrs. Benton Maxey, James Eagle Maxey, Baby Rose Shirley, Jeff Shirley, Leslie Sims, Mrs. Leslie Sims and infant, Jean Sims, Matthew Sims, Annie Tooley, Franklin Tooley, Lela Tooley, Pauline Tooley, Tooley infant and Bob West. Haggard men and women at the Methodist and Baptist churches yesterday showed the strain of a night of tending the suffering and dying stretched out on the pews. The community mobilized quickly after the threatening rumbling of the storm warned residents of the favored part of town that death and destruction were passing to the south of them. With lanterns and flashlights, many were soon searching among the ruins for the wounded and lifeless.

First aid was given at the Hospital building by local doctors and tender-hearted women. Word spread quickly that bedding, clothing and bandages were needed at the Hospital building and at the churches. Glasgow responded quickly to an urgent call for help, and sent nurses, doctors and ambulances. Dr. J. I. McClendon of Russell Springs, providentially present in Tompkinsville, aided local doctors in the first strenuous hour before Glasgow doctors came. Bare black rectangles surrounded with vernal green mark the spots where homes stood Tuesday. The damaged residence of O. C. Landrum and Oscar Sims mark clearly the edges of the devastation. Between them is a treeless and fenceless waste, with scattered remnants of homes and uprooted trees. A heavy rain, which fell continuously from 1 o'clock until 6 yesterday morning, made roads almost impassable and handicapped the work of rehabilitation. Muddy roads and demolished telephone lines retarded information from the surrounding country. The County Farm near Emberton is said to have suffered and some barns and houses in that vicinity are badly damaged, it is reported. Leathen Proffitt, Jake Kingery, Travis Ray and Claude Sheffield are said to have lost barns or houses, or both. However, none of their families was seriously hurt. One of the dead,

Westerfield Anderson, was brought in from three miles east of town. Vincent Sewell, whose family were injured, lives two miles from town.

Financial help will be needed here. Many of the Negroes - whose fragil{e} houses offered no obstacle to the resistless winds - are penniless. Food, shelter and clothing must be provided the living; and the dead are to bury. City newspapers have been asked to publish an appeal for funds to be sent to either of the banks - The Deposit bank and the Peoples bank of Tompkinsville, Ky. The twisting nature of the winds was clearly revealed when the bodies of the Tyree family were found 75 yards south of their home site, and the bodies of the Redeford family were discovered 100 yards north of the spot where their home had stood. The Tyrees lived on the southern edge of the storm area, while the Redefords lived near the northern edge. One of the miracles of the disaster as the escape of Burford Page, wife and three children, whose home was completely wrecked, but who escaped a scratch. An inch plank was blown through the motor of the Page's automobile. The body of the Rev. Redeford's wife was carried 150 yards to a pond on the land belonging to L. P. Hagan. The corpse of the husband as found entangled in a barb wire fence, having been blown about one hundred yards. Their son lived until Wednesday morning. The Redefords came here about a year ago, and are said to have relatives near Sparksville, Ky. Throngs of visitors from surrounding counties talked with hushed voice in Tompkinsville streets Wednesday. Glasgow sent a score of nurses and physicians and her unit of the National Guard patrolled the streets and directed traffic. Her undertakers and their ambulances performed invaluable service."

#### KEPT WIFE'S BODY IN CAVE

The Washington Post, 29 Oct 1905 - "For Ten Years Farmer Humphries Paid Daily Visits to Exhumed Remains. Glasgow (KY.).

"One of the most remarkable and growsome cases that ever came to light in this section has developed with the death of Abijah Humphries. For ten years Humphries had been visiting twice each day, sometimes oftener, the body of his wife, which he had exhumed from its burial place and concealed in a cave on his farm. Following the funeral of his wife, Humphries went to the graveyard and exhumed the body. As he had always been considered more or less eccentric, nothing was at first thought of his frequent visits to a cave. Then a few intimate neighbors asked him the cause of his frequent pilgrimages to the isolated spot. He readily told them, but out of respect they kept the secret."

#### HARD-BOILED EGG ROMANCE

The Washington Post, 25 Feb 1906 - "Name Scratched with a Pin Leads to an Engagement.

From a Glasgow (Ky.) Dispatch. A hard-boiled egg purchased from a street lunch man at Norfolk, Va., bearing the name and address of Miss Effie Lyons, of Bruce, near here, has resulted in the announcement that Miss Lyons is to become the bride of Barney Freidman.

"Before Mr. Freidman removed the shell from the egg he made a note of the name, and soon afterward wrote to Miss Lyons. A few days ago he arrived at the young woman's home, and the announcement of the engagement followed.

"Miss Lyons is the daughter of a farmer who sells many eggs. She attends to sending the eggs to market. In a spirit of fun she scratched her name on an egg with a in. The wedding will take place this week."



Note: Names are spelled  
As they appeared in the  
originals. Membership  
lists are not indexed.

ADAIR	98	BENNETT, GILBERT	119	CAUSEY, PHYLLIS	93
ADAMS, JANE	30	. STEPHEN	24	CHADOIN, PLEASANT	51
ADKINSON, KANDIE	56	BIGGERS, BOBY	63	CHAMBERLAIN, KED P	85
ALBRIGHT, FAY DELL	5	. J U	82	CHAPMAN, GEORGE	100
NINA	5	. LETHA REDMAN	82	CHEEK	85
ALEXANDER, DOTE	84	BILLINGSLEY	30	CHILDRESS, F C REV	40
ALFORD, CHARLES	24	BILLINGSLY	30	G C	81
. HANSIL	23-24	BIRD, JOHN	101	CHISM	24
. JAMES	23-24	BIRHAM, NANCY	60	CHITWOOD, CREED D	66
ALLEN, JOHN	28-29	BISHOP, MARY	72	CHITWOODK, HENRY	84
N P	28	BLACK, JAMES	101	CLACK, HENRY	105
ALLIGOOD, LEON	8	BLACKFORD, OPAL	37	CLARK, GEORGE ROGERS	56
ALLIN, JOHN	101	BLAIN, GEORGE	24	. JOHN	71, 95
ANDERSON	85	BOHANNON, ELLA	81	. THOMAS D DR	83
. A G	37	BOLES	85	. THOMAS D DR	71
. HAZEL	5	BOLES, CHARLES E	1	CLARKE, HENRY	90
. JOHN	101, 105-106	J H	85	COCKRILL, TRAVIS	99
. WESTERFIELD	119-120	BOONE, DANIEL	56	COFFEE, GRIZEL	59
. WILLIAM	23	BOSTICK, D	69	COFFEY, ANNIE MURRELL	5
ARMSTRONG, ELIZABETH	36	BOWLES, EARNEST	5	. CORDELE	5
ASHBY, PENONILA	60	. ELLA	91	. HARRY	5
ASHTON, REBECCA	36	. JUDGE	91	. JOE PAL	5
ASPLEY, BRUCE	61	BOYD, JOHN	24	. RONDALL	5
. JIGGER	61, 64	BOYNTER, BETTIE	36	. VERLON	5
. WALTER D	61	BRADLEY, JAMES	66	COLE, JOHN	95
AUTRY, GENE	62	WILLIAM	66	. JOHN SR	100, 102
BAGBY	106	BRADSHAW, JUDITH	82	. WILLIAM	102
BAGBY, ANNIE L	81	. JUDY HARRISON	83	COLLETTA, JOHN PHILIP	58
S M	101	. JUDY S	83	COLLINS, MINTY	37
BAILEY, DAVID S	66	. SETH	83	COMBS, BENJAMIN	66
. HAMMERFORD	21	BRALLS, CHESTER	5	COMPTON, JOSEPH R	66
. HARRISON	21	BRANSFORD, THOS S	99	CONKIN, NANCY	37
. HENRY J	66	BRIDGES, WINNEY	83	COTHRAN, MARION ESTES	11
. LIZZIE	21	BROOKS, JAMES	48	COULTER, JIMMIE	119
. OLLIE	21	BROWN, ALSIE	21	COUNDON, W DE	99
. RIGGS	119	. ED	79	COURTS, WM JR	104
. S L	21	. GORDON E	61	COX	31, 34
. SALLIE	21	. MOLLIE	79	COX, A P	32
. WILLIAM	119	. MRS	79	CRABTREE,	
BAIRD, GRESHAM	66	. TESSIE	21	LOUGENE SHIPLEY	37
BARBOUR	27	. WILMA	72	CRADDOCK, PASCHAL D	3
BARKLEY, HUGH	29	BRYAN	85	CRAIG, G W	119
PORTER	29	BUCKLEY, HENRY C	36	. THOMAS	28
BARNER, H P	69	JOICEY REED	36	CREMP	13
BASKERVILLE, C O	37	BULLOCK	13	CRENSHAW, B M	99
. EDITH	37	BUOSCIIO, DELLA	30	CRESWELL, ALICE GEE	11
BASTER	17	BURCH, MR AND MRS	79	CROW, A F	84
BAUGH, JOHN	101	BURR, RAMONA	47	CROWE, SANFORD	119
BAXTER, BARLOW	21	. RAMONA ROBERTS	50	CROZIER, JOHN	103
. CORA	21	BURTON	93	CRUMP	13, 106
. GROVER	21	BURWELL	74	CRUMP, B B	100-101, 103
. JOSH	21	BUSH	105	. HAVILAH	24
. MATTIE	21	BUSH, W T	101, 103-104, 106	CRUTCHER, A B	101
. SIDNEY	21	WILL T	104	. HENRY	99-100
. WALFORD	21	BUTLER, HARMON	66	. JAMES L	69
BAYER, E J	37	WILL	104	CULP, DANIEL	101
BEARD, KENNETH	83	BYBEE, BETTIE	80	CUNNINGHAM	30
KIEN	94	CAMPBELL, JEWELL LEWIS	53	CURD	102
BEASLEY, COLUMBUS	66	TRIBBIE LEWIS	51	CURD, DANIEL	102
VIRGINIA GLOVER	5	CARDEN, C E	85	. LIZZIE	81
BEATTY, CHARLIE	5	CARROLL	27	. O E	101
MARY SANDIDGE	5	CARTER, ALLEN	28	DALE, EMILY	64
BEAUCHAMP, WM	98	. BEVERLY	28	DAVASHER, LELA	81
BELL, J H	82	. J C	21	DAVENPORT, CORINNE	11
. JOHN	101-102	. J T MRS	86	DAVIDSON, BENJA A	66
. WM	98	. LUCY	118	DAVIS	85
		. MR	28-29	DAVIS, E C	99
		. WM P	66	. ELIGIA	22
		CARVER, JOEL	82	. H Y	85
		SUSAN B	82-83		
		CASTEEL, ELLA	21		

. JOHNNIE	21	. STEPHEN R	2	. J JUDGE	60
. MARGARET A	50	. W W	52-53	. JAMES	85
. RUTH	21	ELLIOTT	38	. JOHN	12, 102
. SAMUEL	43	ELLIS, B G	81	. JOHN JR	12
. WAYNE	93	RONNIE	93	. JOHN SR	12
. WINN	1	ELLISON, KE T	81	. RICHARD	12
. WM J	50	EMMERT, J T	21	. SQUIRE	94
DAWSON, THOMAS M	66	MATTIE	21	. WM I	12
DEAN, LLOYD	37	EMRY, VALERIA ALMA	50	. WM S	12
. MINDY	37	WILLIAM HENRY	50	GARRISON, BENJ	12
. THEADORE	37	ESTON, R T	86	. GEO	12
DECKER, FLOYD	5	EUBANK, EDWARD	102	. JAMES	12
WILLARD	5	. J JR	105	GARTH, RHODES	12
DEERING, G T	101	. J W	82	GARVIN, SAMUEL	12
GEORGE T	66	. JAS JR	102	GASSAWAY, BENJ	103
DEPP, ELZ. MRS	99	EVANS, WM	99	SAMUEL	12
WILLIAM	96	EVERETT, BETTY	88	GASSOWAY, JIM	84
DEVASHER, LELA	84	E N	90	ROBERT D	66
DICKEN, FREDDIE	21	EVRETT, WM	99	GATES, EIJAH	12
. JULIE	21	EWING, MARY	99	WM	12
. NANCY	21	FELAND, T	102-103	GATEWOOD, JNO	12
. TOMMY	21	WILLIAM	100	MARY	12
. WALTER	21	FEWELL, RHODY	100	GEE, JNO L	12
DICKERSON, MICHAEL H	66	FIELDER, M S CAPT	86	GIBBON, FRANCIS	12
. THOMAS	101	FIRQUIN, AMANDA	91	FRANCIS C	12
. THOMAS C	66	FLANAGAN, THOS	66	GIBSON, JACOB	12
. THOMAS M	66	FLETCHER,		JOHN	7
. WILLIAM J	66	GEORGE WASHINGTON	100	GILL, EDWARD	12
DICKEY, THOMAS	21	FLETCHIE, ERNIE GOV.	93	WM	12
T M MRS	84	FLIPIN, THO	23	GILLENWATER, T C	84
DICKINSON, SOLOMAN	24	FLIPPIN, THOMAS	24	THOMAS C	12
. THO	24	FORD, EVERT	21	GILLEY, MARIE	5
. THOMAS	23, 102	. JUDSON	21	. MYRTLE	5
. THOMS	24	. MARY EDMUNDS	81	. PAUL	5
DODD, ALLEN	28	. PRESTON L	81	. ROSIE	5
. EDMUND	59	FOSTER, J D	85	GILLILAND, DAVID	12
. HARDIN	99	FRAIM, GARNETT	119	JAMES	12
. JOHN	59	. MARGARET	119	GILLOCK	23, 98
. NATHANIEL	28	. MIAMI	119	GILLOCK, LAWRENCE	12
DODSON, RUBE	119	FRANK, JOHN	66, 99	GIST, BENJ	12
DOSS, JAMES	66	FRANKLIN, E A	90	. JOSEPH	12
DOUGLASS, ARCHEL	66	. FANNY	90	. WM A	13
JOHN L	66	. GEORGE	90	GLAZEBROOK, SUCKY	13
DUFF, WILLIAM W	66	. J M	90	GLOVER, EDNA	5
DUKE, ADELL	5	. JAMES	100-101	. JOHN A	13, 66
. HOWARD	5	. JAMES C	90	. JOSEPH	13, 24
. MAXINE	5	. JOHN	23, 90	. JOSEPH H	66
DUNAGAN, THOMAS	66	. LEWIS	106	. WILLIAM H	13
DUNCAN	101	. MALINDA H	90	. WM	13, 24
DUNCAN, JAMES J	66	. MARY	90	GOAD, KENNETH	119
. PAUL C REV	1	. NANCY	90	. RAYMOND	119
. WILLIAM	66	. SARAH E	90	GOFF, JNO	13
. ZACHARIAH A	66	. WILLIAM	90	LEONARD	13
DUNIGAN, JOHN	66	. WILLIAM B	90	GOFORTH, ANDEW	13
DeCROIX,		FREIDMAN, BARNEY	120	GOIN, CHARLES	13
CHARLES "CHUCK"	92	FROGGETT, JUDY	41	GOODALL, PETER	23
EDMONDSON, BILL	53	FULFORD, G W	52	GOODMAN, GEORGE	13
EDMUNDS, MARY	81	FULP, CYNTHIA	53	WM	13
EDWARDS, ALEXANDER	44	GADDE, JOHN	12	GOODWIN, LEWIS	13
. CADER CAPTAIN	44	WILLIAM	12	GORAN, JOHN	95
. CYRUS	94	GADDIE, WILLIAM	12	GORDON, MARY	44
. E S	49	GAINES, RICH.	23	GORE, JNO	13
. EDWARD STEELE	49	GALLOWAY, JNO	12	MANNON	13
. ELIZABETH	43-44, 47	GARDNER, JACOB	12	GORIN	40, 72
. J A	52	. JAMES R	12	GORIN, COL	98
. JANIE	49	. WM	12	. F	102-106
. LUCETTA	49	GARMON, LINDER	118	. FRANKLIN	13, 94
. MARY ELIZABETH?	44	. LUCY CARTER	118	. FRANKLIN JR	13
. MARY GORDON	44	. RALPH R	118	. JNO	13
. MARY J	49	GARNETT, ELIZABETH	60	. JOHN	94-96, 100-101
. REBECCA NOBLETT	44	. J	105	. MURRELL F	13



. SANDI	69, 90, 93	HAMILL	76	.	51-52, 54-55
. THOS J	99	HAMILTON	3	. MINERVA	48
. W J MRS	99	HAMILTON, ABNER	14	. MINERVA K GUFFY	48
GORRIN, FRANKLIN	13	. CLARA	119	. MISS MATT	47, 49
GOSSETT, GARFIELD	13	. JAMES	14	. NEWTON	53
GOSSOM, M R	13	. JOHN	14	. P T	50
GRADDOCK, PARHAL D	13	HAMLETT, ANNIE L	81	. POLLY SNEAD	44
GRANSTETTER, HENRY	13	HAMMER, BATTIS	14	. PRISCILLA	49-51, 54
GRAVES, CLARENCE	119	PETER	14	. PRISCILLA OWEN	51
. EARLINE	119	HAMPTON, ABIJAH	14	. PRISCILLA TRIBBLE	51
. JESSE	119	HAMS, CHRISTOHER	14	. PRISCILLA TRIBBLE	-
. MARTHA ANN	119	HANDEHELL, JACOB	14	. OWEN	43
. R L	13	HANDY, WILLIAM	14	.	55
GRAY, RICHARD	13	HARBEN, AMOS	14	. REBECCA	44
WM T	13	HARBISON, MACHEW	14	. S H	43, 49-51, 53-54
GRAYSON, TREY	56	. SAMUEL	67, 99	. SAML H	50
GREEN, MARY	93	HARBOUR, JEREMIAH D	14	. SAMUEL H	47-49, 52, 54
GREENE, NATHANIEL	94	HARDIE, ARMILDA S	50	. SAMUEL HENRY	44-45
GREER, DAVIE	93	. JAMES G	50	. SAMUEL HENRY REV	43, 55
. ISAAC	13	. JASPER	50	. SAMUEL HINDS	52, 54
. SOLOMON	13	. MATTIE L	50	. SARAH JANE OWEN	52
GREGGS, DANL B	13	. PRECILLA	50	. TABITHA	48, 50, 52
GREY, WALLACE	5	. PRISCILLA	50	. TABITHA E	50, 55
GRIDER, JACOB	13	. SAMUEL H	50	. THOMAS	44
GRIFFIN, HIRAM	28	. TABITHA	50	. THOMAS J	47
LAZARIUS	66	HARDIN, BEN	3	. ZECHARIAH	52
GRINSTEAD, P W	13	. DAVID	14	HARLAN, GEO B	15
GRISSOM, JIMMIE	21	. MARK	14-15	. JACOB	15
LIZZIE	21	HARDING, BOOKER	9	. JAMES	15
GROOMS, JOHN W	66	HARDWICK, WM	15	. JNO	15
GUFFY, MINERVA K	48	HARDY, AMELIA	44	. SAMUEL	15
GULLETT, JAMES	37	. ARMILDA	51-52	. THOS	15
HAGAN, ALEXANDER	68	. ARMILDA SUSAN	48, 55	HARLIN, SEWELL	1
ARTHUR	13	. BURKS	51	HARLON, CLAYBOURNE	15
. L P	120	. ELIZA JENNINGS	-	HARLOW, MICHAEL	15
HALE, ALBERT	66	. SMITH	47	. RANDAL	15
HALEY, HENRY	14	.	48	. UNCLE JOE	84
. JOHN G	14	. ELIZABETH	44	. WM	15
. MAXIMILLIAN	14	. ELIZABETH EDWARDS	43	. WM D	15
HALL, CLARINDA	60	.	44, 47	. WM DAVIS	60
. CORNELIUS	14	. GRANDPA BOB	53	HARPER	5
. EDMUND MAJOR	60	. HENRIETTA	44	HARPER, HANCE	15
. ELIZABETH GARNETT	60	. HENRY	54	. JAMES	16
. FANNY	60	. HESTER ANN	44	. MARY	16
. FANNY B	60	. ISHAM	15, 47, 49	. MATTHEW	16
. GRISELY	60	. JAMES	54	HARRAE, J DR	85
. GRIZEL COFFEE	59	. JAMES G	15, 47-48, 51-53	HARRIS	64
. J H SR	60	. JAMES GREEN	52	HARRIS, ANN	100
. JAMES	14, 60	. JAMES GREEN II	54	. ARCHABALD	16
. JANE	59	. JAMES GREENE	43, 44, 48	. BENJ	16
. JNO	14	. 49, 55		. HEZEKIAH	15
. JOHN	14, 60	. JAMES LAWRENCE	44	. JNO	16
. JOHN COFFEE	60	. JANE M	48	. JOHN	16, 104
. JOHN JUDGE	59	. JANIE	52	. MARTHA	37
. KITTY STOCKTON	60	. JANIE M	55	. PAUL	1
. MABLLON	14	. JAS G	15, 96	. ROBT	16
. MAHLAN	14	. JASPER A	50	. SHERMAN	37
. MAHLON	14	. JASPER NEWTON	44, 47-48	. THOMAS	16
. MICHAEL	14	.	50, 53, 55	. WM	16
. MICHAEL WASHINGTON	59	. JOHN L	48, 55	HARRISON, J R	16
. NANCY BIRHAM	60	. JOHNNY	52	. JESSE	16
. PALMER	14	. JOS G	15	. JUDY	83
. PENONILA ASHBY	60	. LUCETTA	47	. MARTHA POWELL	84, 93
. PRUDENCE STOCKTON	60	. LUCETTA PERRIN	47	HARROW, RAY	51
. ROBERT B	103-105	. LUCINDA HINES	50	HARVEY, AUSTIN	16
. ROBERT STOCKTON	60	. MARTHA ANN	47	. CHARLES	100
. ROBT L	14	. MARTHA S STRADER	50	. ELIZABETH	16
. THOS	14	. MARY ISHAM	44	. JOSEPH	16
. WILLIAM	14	. MARY SNEAD	44	. MARTIN L	16
. WM WARNER	60	. MATTIE	53	HATCHER, JAMES E	16
HALTZCLAW, RICHARD	14	. MATTIE LEE	43, 47-49	LELA	81

HATTON, JAMES	16	HODGE, DAVID H	67	. ROBERT	37
JAS	106	HOFFMAN, TETOR	17	. ROBT	38
HAUSER, THOS	16	HOGAN,		JAMISON, GEO	38
HAWKINS, A H	53	ROSEANN REINEMUTH	28	. GEO W	38
. A L	16	HOGG, LOZIAS	17	. JAMES	38
. HARVEY G	16	. REUBEN	17	. JNO	38
. HENRY G	16	. REUBIN	17	. ROBT	38
. J T MRS	84	HOLEMAN, EDGAR	67	. WM	38
. JNO	16	JOHN M	67	JEFFREYS, RIALS	38
HAY, PETER A	67	HOLLADAY, JOHN A	17	JEFFRIES, CASE	99
HAYDON, ELIJAH	23	JOHN L	17	. DANIEL	23
HAYES, BETTIE	81	HOLLAND, BRATTON	17	. JAMES	102
HAYNES, JAMES	16	HOLLER, WM	17	. PATSEY	23
PHARIS ZELDA	54	HOLLIDAY, JNO A	17	JEMISON, JOHN	38
HAYS, AARON	16	HOLLOWAY, ABILGAIL	36	JENKINS, ABRAHAM	38
. ALLEN	16	ROBERT M	67	. J C	85-86
. HENRY	16	HOLMES, EMANUEL	17	. JACOB	38
. J B	85	. JOEL	17	. WM	38
. WM	16	. WALTER	17	JENT, JOHN	38
HEADRICK, MARCELLA	21	HOLSCLAW, RICHARD	17	JETER, JNO	38
HEDRICK, WALTER	16	HOLSECLAW, HENRY	17	JINKIN, JANE	103
HELDER, FIELDING	16	HOLT, JOE	3	. JOS	103
HELM, BENJAMIN MALLERY	68	HOLTSCLAWS, JAMES	18	. PHILIP	103
. JOHN B	68-69	HONEYCUTT, CHARLES	62	JOBE, ABRAHAM	38
. JOHN F	16	HONROW, RAY	51	JOHNSON, ALEXANDER	38
. THO J	99	HORSELEY	50	. FRANCIS	38
HELMS, JOHN B	68	HOWARD, C C DR	71	. JAMES	38
HENDERSON, J W	16	. CHRISTOPHER	18	. JOHN P	38
. JNO	16	. WILLIAM	18	. WILLIAM	38
. WM R	16	. WM	18	JOHNSTON, ALEXANDER	38
HENDRICKS, BENJAMIN	16	HOWELL, JAMES	18	. DANIEL	38
HENNON, ABEL	95	JOHN	18	. ISAAC	23, 38
HERRIN, WASHINGTON	16	HUFFMAN, BURKITT	18	. JAMES	38
HESSE	85	ELAM	18	. THOMAS	38
HEWITT, BENJAMIN	16	HUGGINS, ANNIE L	81	. THOS	38
HICKS, WM	16	. BETTY EVERETT	88	JOLIFF, JAMES	38
HICKS	17	. CLEM	88	JOLLISS, JAMES	38
HICKS, MARY RUTH	82	. WASHINGTON A	88	JOLLY, JOSEPH	38
HIGDON, ISHMAEL	17	. Z R	99	JONES, ALEXANDER	38
. JOHN	17	. ZION	88	. J W MRS	86
. JOSEPH	17	HULL, LEWIS	21	. JNO	38
. JOSEPH JR	17	. TURNER	21	. JOHN	38
HIGGINS, ANNIE L	82	HUMPHRIES, ABIJAH	120	. OSELRIDGE J	67
WILLIAM	100	HUNDLEY, RUTH	93	. S T	81
HIGH, MARK	17	HUNT, ELZY	18	. SAMPSON	38
HILDRETH, VAN	85	. HENRY	18	. SILAS	38
HILL, CARY	17	. J B	18	. SLAUGHTER	38
. CLEMENT	17	. JAMES	18	. STEVE	38
. JAMES	17	. JOEL T	18	. THOS	64
. JAS	17	. JOHN	18	. W	99
. NELSON	17, 67	. JOHN S	18	. W T	38
HIND, ROBERT	17	. JONATHAN S	18	. WM	38
WILLIAM	17	. JONATHAN SR	18	JORDAN, S	39
HINDMAN, JAMES	17	HUNTER, SAMUEL	18	. S J	95
. JAMES H	17	INGRAM, B W	50	. SAM	39
. JOHN	17	. ELIZABETH JANE	50	. SAML	39
. NANCY	17	. JOHN	37	. SAMUEL	39
HINES, LUCINDA	50	INNIS, WILLIAM	37	. SARAH M	39
THOMAS	50	ISAAC, SAMUEL	37	. SML	39
HINKER, LEWIS	17	ISAACS, SAMUEL	37	JOURDAN, W D	99
WILLIAM	17	ISBELL, JAMES	37	JOYCE, BRNDA	35
HIRSH	26	ISENBERG, HENRY	37	JUNIS, JOHN	39
HISE	3	ISHAM, MARY	44	JUNKINS, JAMES H	39
HISE, ELIJAH	2	JACKSON, ARTHUR A B	67	KAUFMAN, S	85
HITCH, CLEMENT	17	. BENJAMIN	67	KEEL, JAMES F	39
. CLEMENT G	17	. PETER	37	KEEN, EMMA J	81
. CLEMENTS	17	. WM	37	KELLEY, REUBIN	39
HIZER, BENJAMIN	17	JAMERSON, MATTIE	21	SAMUEL	39
. ISAAC	17	RHODA	21	KELLY, CALEB	39
. JACOB	17	JAMESON, JAMES	37	ROBERT	39
. JOHN	17	. JOHN	37	KELSAY, JAMES	39



KELSEY, HUGH	39	LEONARD, WM	74	LOVE, DOCT	75
. HUGH B	39	LESLIE, P H	74	. EDMUND	75
. JNO	39	LESSENBERRY, ROBERT	1	. ROBT	75
. MOSES	39	LESTER, SARAH	74	LOW, A H	75
KERGER, WILSON	39	THOMAS	74	LOWRY, ELEANOR	75
KERLEY, E L SR	1	LETCHER, DAVIS MYERS	74	LOYD, THOS	75
KERR, WM REV	98	LEVEE, KRISTA	93	LUCKETT, SAMUEL	75
KIDD, WILLIAM	48	LEVI	82	LUTTAMAN, RAY BRUCE	5
KILGORE, D Y	85	LEVY	82	LYNE, TIMOTHY	75
. W B	99	LEWIS, CHARLES	74	LYON, DAVID	75
KIMBLE, JAS A	67	. CLAUDIA ALMEDA	55	. JOHN	75
KINCADE, HOPSON	39	. CYNTHIA FULP	53	. MARTHA	75
KINDALL, FRANCIS	39	. CYNTHIA TRIBBLE	55	LYONS, EFFIE	120
KING, BENJ	39	. DEAN H REV	43, 54	MACKSEY, EHRAM	75
. FRANCIS	39	. E W	74	PHILLIP	75
. JNO	39	. GEORGE HARDY	55	MADER, J H	92
. JOHN	39	. GOERGE WASHINGTON	53	MAGERS, ALBERT C	75
. PETER	39	. HUDSON	74	MALLERY,	
. SOLOMON	39	. JASPER LEE	55	. SARAH ELIZA BETH	68
KINGARY, JOSEPH	39	. JNO	75	. SARAH ELIZABETH	67
KINGERY, JAKE	119	. JOE	28	MALLORY, R T	68-69
KINGRY, JACOB	39	. JOHN	28-29, 75	. ROBERT	67
KINNAIRD, CHARLES	84	. JOHN B	75	. ROBERT T	69
KINSLOW, AARON	67	. JUSTIN OWEN	55	. SARAH ELIZABETH	67, 69
. ALLEN	66	. LANNIS MELVIE	55	MALONE, P L	75
. GINA	64	. MATTIE	54	. SAMUEL	75
. JOHN M	39	. MATTIE LEE	43, 55	. WINN	75
. THOMAS	66	. MATTIE LEE HARDY	48	. WYNN	75
KIRBY, ROBT	39	. ORRIN D	55	MAN, WM	76
KIRTLEY, JNO	39	. PHARIS ZELDA HAYNES	54	MANION, AMBROSE	76
. P J	39	. ROBERT	54	MANLY, GABRIEL G	76
. PASCHAL J	39	. ROBERT HERBERT	55	MANN, JAS W	76
KLEE, ISAAC	66	. ROBERT IVAN	55	. WILLIAM	76
KNIGHT, DAISY	11	. ROBERT LEE 48-49, 53-55		. WM	76
KNOWLES, R S	28	. RUTH WINNONAH	55	MANNON, AMBROSE	76
LAIN, ADRIN	74	. SAMUEL THERON	54-55	MANSFIELD, J T	76
LAIR, MATHIAS	74	. SIMCON	75	WM	76
MATHIS	74	. SIMEON	75	MANSPELL, WM	76
LAMB, RICHARD	74	. TRIBBIE	51	MARCUS, GENICE LEFTWICH	2
LAMBERT, D C	66	. VIRGIL OMER	55	MARR, JACK	28
LANCE, LEO	74	. WILLIAM AUDREY	55	JOHN	76
LAND, TILMAN	74	. WILLIS IVAN	55	MARRIN, WM	76
LANDRUM, O C DR	119	LINCOLN, ABRAHAM	73	MARRS, ABIJAH T	76
LANE, FRANCES	74	LITTEL	27	. JAMES	76
. JOE MRS	1	LITTLE, WM	75	. SAMUEL	76
. LOIS	79	LIVELY, CANNON	75	MARS, JAMES	85
LARD, JOSEPH	74	LOCK, JOHN SR	66	MARSHALL, ABIGAIL	76
LARGEN, T L REV	53	RICHARD	75	. ANDREW	76
LASLEY, JAMES	74	LOCKE	85	. HUGH	76
LATTIMORE, FRANCIS	74	LOFFTUS, GEO	75	. JAMES H	76
LAURENCE, CARTER	74	LOGAN, WM	75	. JNO	76
LAWLESS	2-3	LOGSDON, JNO	75	. SAMUEL	76
LAWLESS, B	74	. MICHAEL	22	MARTIN, BENJAMIN H	76
BURWELL	99	. OBRA	22	. CHARLES	49
LEACH, JNO	74	. ORA	23	. EDW	76
. SUSAN	51	. SAMUEL	75	. ISAAC	76
. TABITHA	47-48	LONDON, ALICE	2	. JAMES	76
LEBSOCK	26	. BERTHA	2	. JAMES B	84
LEE, ELI W	74	. CONNARD	2	. JAS B	76
. HENRY T	74	. DAISY	2	. JNO	76
. ISAAC B	74	. DOROTHY	2	. JOHN B	76
. PRESTON M	74	. GUY	2	. JOSEPH	76
LEECH, BRICE T	83	. ISHAM	2	. LUCINDA	49
. JO S	85	. LITTLE FRED	2	. OWEN	76
. PETE	94, 96	. MARY	2	MASON, ELIJAH	76
LEEPER, MARILLA	21	. RUTH	2	MASTERS, H C	85
. MOLLIE	21	. VIRGIL	2	MATHES, JOHN A	76
. REUBEN	21	. VIRGINIA JEWELL	2	MATHEWS, JOHN	95
LEIBING, HERMAN	81	LOOPER, MILDRED	21	MATONE, CUTHBERT W	76
LEMINGS, WILLIAM	66	LOTPITCH, RALPH	75	MATTHEWS	105
LEMONS, JACOB	74	LOUGH, JACOB	75	MATTHEWS,	

. ELINORA DAVIS	36	ROBERT H	84	. C	85
. EUGENE PORTER	36	MUNFORD, W E	99	PALMORE S	85
. FANNIE	36	MURRAY, ELI	66	PARK, TIMOTHY S	66
. G W	104	MURREL, SAMUEL	24	PARRISH, ED	78
. GEO W	104	MURRELL, HOWARD MRS	99	MR	78-79
. GRANVILLE ROGAN	36	. J	106	PATTON, PHIL JUDGE	63
. HATTIE IRENE	37	. L H	101	PAYNE	84
. HENRIETTA KEY	-	MUSGROVE	2	PEDEN, BENJAMIN S	66
. NORVILLE	36	MUSGROVE, H	99	PEDIGO, DELSA	5
. IDA BELLE	36	McCANDLESS, LONEY MRS	84	. GLADYS	5
. JAMES	76	McCLENDON, J L DR	119	. H M	85
. JNO	76-77	McCONNELL, J D	85	. HARVEY	5
. JOHN	100-101, 103, 106	McDANIEL, S A	24	. J R	85
. JOHN N	77	McDANIEL	93	. J W	85
. MARY FRANCIS	36	McFERAN, WM	98	. MAXINE	5
. MILLARD GILMORE	36	McFERRAN, JOHN	24, 95, 100	. RAY	5
. NANNIE	37	W R	99	. THOMAS	66
. THOS	77	McGLASON, EDNA V	50	. TRESSIE MAE	5
. W	101	McGLASSON	51	PEEPLES	31, 34
MATTHEWSK, JOHN	102	McGLASSON, CYNTHIA	51	PEEPLES, BEN	32
MAUK, GEORGE	66	McGLASSON, DANIEL W	50	PENNINGTON, ALVIE	21
MAUPIN, R G	99	McLERREN, J H	21	. CHARLES	21
MAXEY, BENTON	119	McMURTRY, SAMUEL	66	. EUPHA	21
. EDWARD	77	NANCE, FRANCES	5	. HARVE	21
. JAMES EAGLE	119	. GENEVA	5	. JEFF	21
. EPHRAM	77	. MYRTIE	5	. OSCO	21
. LAURA	21	NANCY, MARY BELL	5	. SALLIE	21
. MAYMIE	119	NEELEY	91	. VIRGIL	21
. PHILLIP	77	NEIGHBORS, B G	81	. WILLIE	21
. TOLBERT	21	NELSON, AMANDA FIRQUIN	91	PERKINS, JOHN	104
. WM	77	. DINK	92	PHILLIPS, L S	81
MAYFIELD	99	. JAMES MARK	91	PHILPOT, WM K	66
MAYFIELD, GIDEON	77	. JOHN	92	PIERCE, GLADYS	5
. JNO JR	77	. JOHN MARION "PA"	91	LOVERNE	5
. T	104	. JOHN R	91	PLANT, ELIZA	37
. THOS	103	. JOHN URI	92	POORE, KATHLEEN	5
MELL, M P	80	. LORIE	92	POWELL, MARTHA	84
METCALFE, THOMAS	71	. NICK	91	PRIDE, PAUL F	96
MILLER, D	101, 106	. ORPHA	92	PROFFITT, LEATHEN	119
. HENRY	23, 100-101, 106	. ORPHA JANE RIGDON	91	PRUITT, JOHNNIE	21
. J	102	NEVILLE, THOMAS R	66	PULLIAM, JIM	28
. JAMES	100, 102	NEWLAND, CLYDE	5	PURCHES, THOS MRS	84
MONDAY, MARCUS	5	. EDNA	5	PURSLEY,	
. WILLIAM	5	. LONNIE	5	MARY ELIZABETH	36
MONROE, BEN	104	NEWMAN, EUGENE	2-3	QUIGLEY, ANDREW	66
. JOHN	102, 104	NOBLETT, REBECCA	44	RALSTON, JAMES M	66
. K T B	104	NORVILLE,		RAMEY, BILL	5
. LUCY	102	HENRIETTA KEY	36	. HARRY	5
. T B	104-105	NUCKOLS, WILLIAM	66	. MITCHELL	5
. THOS B	106	NUNN, STEVE REP.	93	RAPP, ADOLPH	86
MONTELL,		NUNNALLY, WILLIAM B	66	RAUBOLD, H	85
WILLIAM LYNWOOD	43	OAKS, IRISH	5	RAY, JAMIE	64, 93
MONTGOMERY,		. LEE	5	NICHOLAS	3
. ARMILDA HARDY	51	. WHEELER	5	. TRAVIS	119
. DAVID H	66	ODOM, LILLIE VERTREES	7-9	REDDING, FLORRIE	82
. J B	49		10-11	JOHN MRS	84
. JOSHUA T	50-51	OLDFIELD, W L	85	REDEFORD, ROY REV	119, 120
. REUBIN	66	OWEN, DAVID	47	REDMAN, LETHA	82
. S A	51-52	. JOSEPH	47	REEDER, JEMIMA	36
. SIMPSON K	66	. PRISCILLA	51	REID, THOMAS	3
. WILLIAM D	49-51	. PRISCILLA TRIBBLE	43	RENFRO, G Y	82
MOORE, THOMAS	37	. PRISCILLA TRIBBLE	47, 54-55	ROBERTSON	66
MORGAN, DANIEL	94	. PRISCILLA TRIBBLE	46	RENICK, WM	24
MORRIS	85	. SARAH JANE	47, 52	RHOADE, D MRS	99
MORRISS, BURWELL E	66	. SARAH WILKINS	47	RICE, JAMES H	100
MOSER, HENRY	66	. SUSAN LEACH	51	JAS H	102-103
MOSS, H	106	. TABITHA LEACH	47-48	RIGDON, ORPHA JANE	91
JOHN	95	. WILLIAM PETER	47	RILEY, JAMES	37
MUELLER	85	OWENS	28	RINEY, JAMES R	31
MULLIGAN, CHAS A	66	OWSLEY, ERNEST	85	RITTER, JUDGE	84
MUNDAY, FANNIE SPEAR	84	PAGE, BURFORD	120	. MR AND MRS	79



. MRS	78	. DAN	105	. RICHARD	35-36
. PRESTON H	105	. ELIZA JENNINGS	47-48	. WILLIAM WYCOFF	36
ROBERTS, NERVE	37	. HARRISON	21	STRADER, MARTHA S	50
ROBERTSON, ISAAC	101-102	. HEWEY	21	STRINGFIELD, WILLIAM	100
ROBINSON, ISAAC	106	. JOSHUA	67	TADE, E R	21
ROGERS, EDMUND	71	. W B	82	LEN	21
. GEO	99, 104-105	. WILLIAM	47, 67	TAYLOR, A C	80
. GEO DR	60	. WILLIE T	21	TERRY, JOHN	100, 106
. GEORGE C	68-69	. WINNIE	5	. N G REV	85
. JNO G	99	. SNEAD, POLLY	44	. SAMUEL IV	93
ROSARIA, SISTER	30	SNODDY, H C	82	THARP, MANUAL	37
ROSS, DAVID	71	R C	99	THOMPSON, C G	99
JOHN	71	SOURY, ANDREW	101	KENNETH C JR	9
ROUSSEAU, JOHN	84	SPEAKMAN, THOMAS	23	THOMSON, PENELOPE	35
RUSH, GAT C	48	SPEAR, ANN	21	TIDE, GEORGIA	21
RUSSELL, SAMUEL	66	. BARLOW	21	TISQUANTUM, CHIEF	36
SAMES, JAMES D III	31	. BASSIE	21	TISQUANTUMK, CHIEF	35
SAMPSON, WM	99	. BERT	21	TODD, MANLY	67
SANDERS, GEO W	66	. BILLY	21	TOLLE, WILLIAM DANIEL	18
. RICHIE	93	. DORA	21	TOMPKINS, CHRISTOPHER	99
. RICHIE SEN	93	. EDGAR	21	TOOLEY, ANNIE	119
SANDERSON, LAURA G	82	. ELLEN	21	. FRANKLIN	119
SAUNDERS, EDWARD	100	. FANNIE	84	. INFANT	119
SAVAGE, WILLIAM	106	. GEORGIA	21	. LELA	119
SCAGGS, KATHLEEN	5	. JULIA	21	. PAULINE	119
SCOTT, JOHN	95	. LEWIS	21	TRABUE, GEO W	99
S	99	. LUTHER	21	TRIBBLE, ESTHER	47
SCRIMINGER, JOHN	66	. OLLIS	21	. PETER	47
SCRIVINGER, JOSEPH	66	. OVIA PEARL	21	. PRISCILLA	47
SEA, JOHN	102	. PEARL	21	. WILLIAM PETER	47
SETTLE, EDWARD	66	. ROSA	21	TRIGG	84
. GEORGE M	66	. ROSALIA	21	TRIGG, HARDAN	95
. JOE	28	. TOMP	21	TROTTER, GEORGE	103
. JOHN M	66	SPEER, M F	81	SAMUEL	103
. WILLIS F	66	SPENCER, LESA	79	TUCKER, GEO T SR	81
SEWELL, ELIZABETH	119	SPETH	26	TUDER, G T	53-54
. VINCENT	119-120	SPROWLS, FRANK	21	TURNER, DABNEY	104
SHAW, JOEL	24	. LEE	21	. ED	119
SHEFIELD, CLAUDE	119	. MAMIE	21	. IRENE	119
SHELBY, ISAAC	44	. MAY	21	TYREE, TRAVIS	119
SHEPARD, W W	80	. NORA	21	UNDERWOOD, J R	100
SHIPLEY, EUGENE "GENE"	37	STALLARD, LEMUEL	68	T D	84
. GEORGE MACK	37	STANDLY, WILLIAM	102-103	VAN PRINCIS, KENT	35
. LOUGENE	37	STANLEY, W S	34	VANCE, WILLIAM	67
. NANCY CONKIN	37	STANLEYS W	31	VAUGHN, MARTHA	49
SHIRLEY, BABY ROSE	119	STANTON	26-27	R V	49
. JEFF	119	STEWART, ALFRED	67	VELUZAT, CLAY	5
. MISS	84	STOCKTON	13	VERTREES, CATHERINE	10-11
SIMMONS, JAMES	83	STOCKTON, CATHERINE	60	. JOHN LUTHER DR	11
JIMMY	70	. KITTY	60	. PETER	7-11
SIMS, JEAN	119	. PRUDENCE	60	WADE, JESSE	84
. LESLIE	119	. RICHARD DR	60	. LILLIE D	82
. MATTHEW	119	. ROBERT	60	. O	105
. OSCAR DR	119	STOKES, WILLIAM A	67	. OBADIAH	105
SKAGGS, MARY ELIZABETH	9	STONE, CAROL	30	. W E	99
. NORMA	5	STOUT, ABEL	36	WALKER, DAVID	23, 106
. POLLY	9	. ABILGAIN HOLLOWAY	36	WALTON, GEO R	85
SKEGGS, HENRY	44	. BETTIE BOYNTER	36	WARDER, M H	85
SKIPWORTH, BURNIS	72	. DANIEL JAMES	36	WARREN, JOHN A	50
J L	81	. DAVID	36	WASHINGTON, GEORGE	30, 94
SLAUGHTER, G L	21	. ELIZABETH ARMSTRONG	36	WATERS, PHILOMEN MRS	84
SLEMMONS, JOHN W	66	. EPHRIAM H	36	WATSON, AMANDA SANDIDGE	5
SLINKER	63	. JAMES	36	SALLIE	82
SLINKER, L S	61	. JEMIMA REEDER	36	WAYNE, ANTHONY	94
SMALL, JESSE	77-78	. JOICEY REED BUCKLEY	36	WELCH, MR	101
REBECCA WOODSON	77-78	. MARY ELIZABETH	-	WELLS, MABEL SHELBY	37
SMITH	1, 104-105	. PURSLEY	36	WELSH, WILLIAM	100-101
SMITH, ALICE	2	. NANCY "NANNIE"	36	WM	95
. ANNIE L	81	. PENELOPE	35	WHEELER, WM T	67
. ANNIE L HIGGINS	82	. PENELOPE THOMSON	35	WHITE, ANNIE KATE	21
. CHARLES A	67	. REBECCA ASHTON	36	. ERNEST L	21

. VERNON	43
WHITEJETT	102
WHITLOW, JESSIE REID	5
ROBERT	5
WHITNEY, KINCHON	67
WILBORN, M E	82
WILCOX	14
WILKINS, SARAH	47
WILLIAMS, BENJAMIN	83
. DAVID	83
. ELIZABETH TRACY	83
. ELLEN	93
. GEORGE JEWELL	82
. J T	81
. JAMES	83
. JAMES N	82-83
. JUDITH BRADSHAW	82
. JOHN D	67
. JOHN WILLIAMS	83
. JONAS	83
. JONES	83
. JUDY S BRADSHAW	83
. L E	3
. MARY RUTH HICKS	82
. MILLEY RAGLAND	83
. NANCY BRIDGES	83
. PATSY HUCKEBY	83
. POLLY BRIDGES	83
. RACHEL HAWKINS	83
. REBECKAH HUCKEBY	83
. RICHARD	83
. S D	83
. SALLEY KELSAY	83
. SALLEY KELSEY	83
. STEVEN DOUGLAS	82
. SUSAN B CARVER	82-83
. THOMAS	83
. WILLIAM	83
. WINNEY BRIDGES	83
WILSON, JOEL	64
. JOHN	24
. MR AND MRS	79
. ROBERT	67
. WM	99
WINLOCKE, JAS	101
JOSEPH	100
WINN, B B	106
WOOD, ALEXANDER	2
W J	101
WOODS	85
WOODSON, FARMER	77
. G C	80
. REBECCA	77-78
WORKMAN, JOHN JR	105
WREN, I N	3
MR	3
WRIGHT, LAURA G	82
WILLIAM	101
WYCOFF, WILLIAM	36
YANCEY, JOEL	24
YATES, CHARLES	3, 67
. JOHN	3
. JOHN M	3
YORK	24

### NEW RECORDS BEING RELEASED

A new project has begun in which the LDS Church has undertaken recently to place 20 \*billion\* names online within the next several decades, which will come from the 2.3 million rolls of microfilm which are stored in their vaults under Granite Mountain in Utah. Involved with this will be some 200,000 family histories which the Church has in its holdings. It will ultimately involve many thousands of volunteers all over the country, who will have access to special software supplied by the Church for the use by the volunteers who will do various tasks(indexing, arranging data, and many others) with the images which are supplied, via the software, to the volunteers. It took nearly 30,000 volunteers 12 years to get the 1880 census ready for online use. Technology has improved significantly since then, of course, but this is still a staggering amount of work. The Church is beginning the project slowly, as they work with the new software and eliminate bugs, try different approaches to speed up the process without loss of accuracy, etc., and, in some cases, issues of permissions must be addressed. Once all of that is worked out, the Church will begin to publicize the effort more openly and begin asking for volunteers. There are about 4200 family histories which are already one line through the BYU site at

[www.familyhistoryarchive.byu.edu](http://www.familyhistoryarchive.byu.edu).



BOOKS FOR SALE BY THE SOCIETY

**Barren County Cemeteries:** Ken Beard and Brice T. Leech, Editors. Hardbound. \$25.00 plus \$3.50 shipping and handling.

**Barren County Heritage.** Goode and Gardner, Editors. \$25.00 plus \$3.50 shipping and handling.

**Barrens: The Family Genealogy of the White, Jones, Maxey, Rennick, Pope and Kirkpatrick families, related lines.** Emery H. White. \$11.50.

**Biography of Elder Jacob Locke.** James P. Brooks. \$2.60.

**Goodhope Baptist Church** (now Metcalfe Co.), Peden 1838-1872. \$6.00

**Historic Trip Through Barren County, Ky.** C. Clayton Simmons, hardbound. \$17.50.

**Little Barren (Trammel's Creek) Baptist Church,** Mtcalfe Co KY, Peden. \$6.00.

**Mt. Tabor Baptist Church,** Committee. \$11.65.

**Pleasant Run Church, McFarland's Creek,** 1827-1844, Peden. \$6.00.

**Stories of the Early Days, Cyrus Edwards.** Hardbound. \$17.00 plus \$2.00 postage.

**Then And Now,** Dr. R. H. Grinstead. \$2.60.

**Times of Long Ago.** Franklin Gorin. Hardbound. \$12.00. plus \$2.00 postage

**1879 Beers and Lanagan Map of Barren County.** 24x30 laminated cardstock, black and white. Landowners shown, community inserts. \$7.25 plus \$2.75 postage.

I would like to order the following books:

TITLE	COST
_____	_____
_____	_____
_____	_____
_____	_____
_____	_____
Total Cost	\$
Extra S&H if applicable	\$
TOTAL	\$

MEMBERSHIP APPLICATION

New Member (Y)      (N)                      Renewal              (Y)      (N)

Name: \_\_\_\_\_

Address: \_\_\_\_\_

\_\_\_\_\_

\_\_\_\_\_

Names being researched: (Please limit to three)

- 1.
- 2.
- 3.

Enclosed is my check/money order in the amount of \$\_\_\_\_\_ for membership in the Society. Dues received before January 31<sup>st</sup> of each year will insure that your name is on the mailing list of "Traces" for the first issue of the year. If received after that date, you will be mailed your current issue and all back issues due you at that time. Please notify us of address changes!

Regular Membership	\$12.00
Family	\$15.00 (one copy of "Traces")
Life, under age 70	\$150.00
Life, over age 70	\$100.00

Thank you for your continued support!

Mail this application to:

South Central Kentucky Historical and Genealogical Society  
Post Office Box 157  
Glasgow, KY 42142-0157



## GENERAL INFORMATION

**MEMBERSHIP** is open to anyone interested in the history of the South Central Kentucky area, centering around Barren County. Annual dues are \$12.00.

**TRACES**, the Society's quarterly publication is received by all members. It is published seasonally; Spring, Summer, Fall and Winter. Members joining during the year will receive the past issues of that year in a separate mailing.

**CONTRIBUTIONS** are earnestly solicited. Family genealogies, marriages, Bible, will and probate, cemetery, court and other records are all acceptable. You will be listed as the contributor.

**QUERIES** are accepted only from members, without limit, and will be published as space permits. Queries should be limited to about 50 words.

**EXCHANGE** of Traces with other Societies or publications is acceptable and welcome.

**BOOKS** to be reviewed in Traces must be sent with information as to cost, including postage, from whom the book may be obtained. They become the property of the Society library. Books should have Kentucky interest. Reviews will be published as space permits.

**MEETINGS** are held monthly, except December, at the South Central Kentucky Cultural Center (Museum of the Barrens), 200 Water Street, Glasgow, KY, on the fourth Thursday, 7:00 p.m. Interesting and informative programs are planned for each meeting and your supportive attendance is always welcome.

**BACK ISSUES** of Traces are available. Our supplies of the following are gone: Vol. 1, Nos. 1-4 (1973); Nos. 1-4 (1974); Vol. 4. (1976); Vol. 5, No. 1 (1977), Vol. 3, Nos. 1 and 4 (1981); Vol. 10, Nos. 1 and 2 (1982), Vol. 12, No. 2 (1984). All others can be purchased as long as the supply lasts at \$4.00. Back issues will be mailed with our regular quarterly mailing.

**CORRESPONDENCE** of any type that requires a reply must contain a self-addressed, stamped envelope. Address to: South Central Kentucky Historical and Genealogical Society, P. O. Box 157, Glasgow, KY 42142-0157.

**BOOKS AND MATERIALS** of a genealogical nature that you no longer need – would you consider donating them to the Society? They will be preserved for other researchers and are deeply appreciated. Contact the editor, Sandi Gorin, 205 Clements Avenue, Glasgow, KY 42141-3049.

**SOUTH CENTRAL KENTUCKY HISTORICAL  
& GENEALOGICAL SOCIETY  
POST OFFICE BOX 157  
GLASGOW, KY 42142-0157**

**PRESORTED STANDARD  
U. S. POSTAGE PAID  
PERMIT #231  
GLASGOW, KY 42141**

**TABLE OF CONTENTS**

Page 91	John Marion "Pa" Nelson
Page 93	Barren County Cemetery Board Receives \$2,000 Grant
Page 94	The Town of Glasgow Stories of Early Days
Page 95	Establishment of Glasgow
Page 96	Maps of Glasgow
Page 97	1799 Map
Page 98	ca 1820 Map
Page 99	1852 Map
Page 100	Town of Glasgow – Lot Owners
Page 107	Membership and Life Membership for 2005
Page 111	Current E-mail addresses listed with membership
Page 113	2005 Library Membership
Page 114	Surname Research Index
Page 117	Gift Memberships
Page 118	Exchange Membership 2005 In Memory of Ralph Garmon
Page 119	Cyclone Takes 12 Lives
Page 120	Kept Wife's Body in Cave Hard-Boiled Egg Romance
Page 121	Index 2005
Page 128	New Records Being Released
	Books For Sale By The Society
	Membership Application