

Winter 2006

## Traces Volume 34, Number 4

Kentucky Library Research Collections  
Western Kentucky University, [spcol@wku.edu](mailto:spcol@wku.edu)

Follow this and additional works at: [https://digitalcommons.wku.edu/traces\\_bcgsn](https://digitalcommons.wku.edu/traces_bcgsn)



Part of the [Genealogy Commons](#), [Public History Commons](#), and the [United States History Commons](#)

---

### Recommended Citation

Kentucky Library Research Collections, "Traces Volume 34, Number 4" (2006). *Traces, the Southern Central Kentucky, Barren County Genealogical Newsletter*. Paper 148.  
[https://digitalcommons.wku.edu/traces\\_bcgsn/148](https://digitalcommons.wku.edu/traces_bcgsn/148)

This Newsletter is brought to you for free and open access by TopSCHOLAR®. It has been accepted for inclusion in Traces, the Southern Central Kentucky, Barren County Genealogical Newsletter by an authorized administrator of TopSCHOLAR®. For more information, please contact [topscholar@wku.edu](mailto:topscholar@wku.edu).

2006

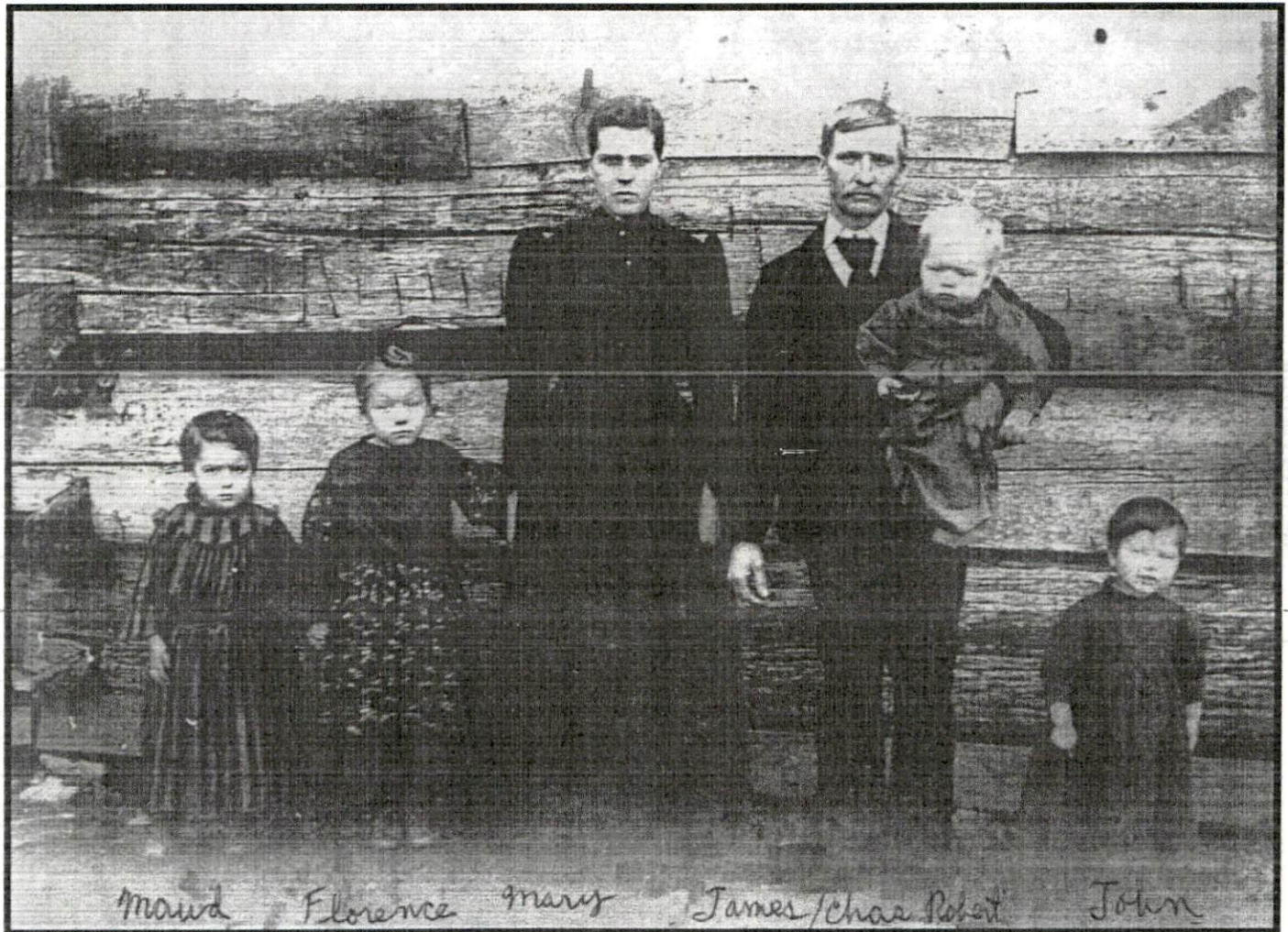
VOLUME 34

ISSUE NO. 4

ISSN - 0882-2158

WINTER

# TRACES



## ***THE RICHEY FAMILY***

Quarterly Publication of  
**THE SOUTH CENTRAL KENTUCKY HISTORICAL AND GENEALOGICAL SOCIETY,  
INCORPORATED**

P.O. Box 157

Glasgow, Kentucky 42142-0157

**SOUTH CENTRAL KENTUCKY HISTORICAL &  
GENEALOGICAL SOCIETY**

**OFFICERS AND DIRECTORS 2006-2007**

<b>PRESIDENT</b>	<b>Steve Botts</b>
<b>2<sup>ND</sup> VICE PRESIDENT- PUBLICITY</b>	<b>Margie Kinslow</b>
<b>3<sup>RD</sup> VICE PRESIDENT – MEMBERSHIP</b>	<b>Ken Beard</b>
<b>RECORDING SECRETARY</b>	<b>Gayle Berry</b>
<b>CORRESPONDING SECRETARY/ TREASURER</b>	<b>Juanita Bardin</b>
<b>ASSISTANT TREASURER</b>	<b>Ruth Wood</b>
<b>EDITOR, "TRACES"</b>	<b>Sandi Gorin</b>

**BOARD OF DIRECTORS**

<b>Haskell Bertram</b>	<b>Don Novosel</b>	<b>Dorothy Wade</b>
<b>James Peden</b>	<b>Selma Mayfield</b>	<b>Mary B. Jones</b>
	<b>Sandi Gorin</b>	

**PAST PRESIDENTS**

<b>Paul Bastien</b>	<b>L. E. Calhoun</b>	<b>Cecil Goode</b>	<b>Kaye Harbison</b>
<b>Jerry Houchens *</b>	<b>Leonard Kingrey</b>	<b>Brice T. Leech *</b>	<b>John Mutter</b>
<b>James Simmons *</b>	<b>Katie M. Smith *</b>	<b>Ruby Jones Smith</b>	<b>Joe Donald Taylor</b>
		<b>W. Samuel Terry IV</b>	

\*Deceased

***REMINDER.... TIME TO RENEW  
YOUR MEMBERSHIP... FOR 2007!***

IF YOUR MEMBERSHIP EXPIRES AT THE END OF 2006,  
A RENEWAL MEMBERSHIP NOTICE WILL BE PROVIDED IN THIS ISSUE.

**ON THE COVER**

The James Richey family whose story follows, "The Turkey Dress"



### THE TURKEY DRESS

Contributed by Robert Lee Gilland, 3585 N. 1100 West, Thorntown, IN 46071

Every little girl of ten years of age loves to get a new dress, especially if it is a reward for helping with the family and farm chores. This was exactly what was about to happen to Maud's father, James Richey, a small farmer in that region, had taken on the extra job of driving a stage coach from Glasgow to Scottsville. Early in the mornings he would drive his rig to Scottsville and during the afternoons he, and his four-horse team, would bring the stage back to Glasgow. He always had some extra time when his horses were resting. While they ate their feed and enjoyed some cool water, James often visited the general-merchandise store. Once he saw a chance to buy a remnant of the last few yards of a bolt of some beautifully printed calico cloth, at a nice bargain.



His parents, Preston and Sarah, had come to live with their son and his three young children. Mary Tinsley Richey had died a few years earlier. Sarah was a good cook and an excellent seamstress. She started, right away, to teach Mau and Florence to sew.

James could hardly wait to get home on the day he had bought his treasure of cloth. When he presented the cloth to his mother and two daughters, they were so excited that supper just had to wait until Sarah examined the pretty fabric. She unrolled just enough of it to lay a great fold across the shoulders of each of her grand-daughters. A broad smile spread over Sarah's face for she knew at once that it would match the freckled face and reddish hair of Maud and the spotless white skin and golden curls of Florence. Maud had inherited the Tinsley features from her mother and Florence greatly resembled her Richey ancestors.

When supper was finished and the chores were done, Sarah began, at once, to lay out the patterns she had made for dresses for the growing girls. As she worked, a lighted kerosene lamp was brought in, for darkness was beginning to fall. In a few moments Sarah laid her scissors down and complained that she could no longer see to cut the cloth. Sarah was having what she called, "one of her spells." In these spells her sight would become very dim. After she had rested her eyes for a short while, her sight always returned as sharp as ever. These times, when her sight had dimmed, always followed a time of great excitement and when she was very tired.

Earlier when Sarah was just a young mother the Civil War had just ended. A group of discharged soldiers were making their way to their homes. While the men were away cutting the tobacco crop in the fields these soldiers raided the Richey farm. Sarah's son, James, was only a few months old and still in the cradle. A captain in the group came inside the Richey cabin and asked to be served what was left of their noon-day meal. As Sarah gave him the remaining ham and coffee, she gave her impression of what she felt about their behavior. The Captain had unbuckled his sword and had laid it on the dinner table beside him. He picked it up quickly and struck Sarah on the back of the head with the sword sheath. She was stunned. Away went the



The Turkey Dress, continued:

raiders with whatever they had found that they could eat. Sarah recovered but there were times when her sight grew very dim for a short while.

Early next morning, after the dressmaking had been interrupted, the Richey household arose to the smell of side meat frying in the skillet, coffee brewing in the pot and biscuits baking in the oven. Grandmother Sarah was again her usual self and her eyes were bright, as shiny as new money. Maud asked her grandmother how she was feeling. She smiled cheerfully as she put the rest of the food on the table and remarked, "The Lord has made this day, let us rejoice and be glad in it."

When James Richey and the stage had gone, Grandmother Sarah and the girls turned at once to the task of cutting out the rest of the dress from the paper patterns. Each girl had to decide just how her collar would be formed, how the waist would be sewed and where the buttons would be arranged along the front. When the parts were carefully placed in two neat stacks the girls were thrilled with the prospects of such a beautiful new dress. These stacks were left until a trip could be made to the general store at Freedom, a nearby hamlet. Some buttons and thread were needed.

Sarah had a special basket where she kept the extra eggs that she had not used in the preparation of the daily meals for her family. She had special uses for the different kinds of eggs. She always used the eggs of the white ducks and the gray geese when she made egg noodles. An egg custard called for guinea or turkey eggs. The poultry flock was kept enclosed in a high-fenced poultry yard. Sometimes the old roosters and the turkey gobblers would try to flog Florence when she brought their grain or Maud when she gathered the eggs. Today, Sarah's basket had over two-dozen large brown eggs in it.

Soon they were walking along the road to the store. At the store the eggs were sold and the money was enough to get some coffee beans, two cards of bone buttons and a spool of white thread. Off they went with their treasure. When they arrived at their home the buttons were laid on the calico. Sarah was quite pleased. She started immediately to sew the dress pieces together. Small kindling and firewood was quickly added to the iron cook stove fire and Sarah prepared a dinner for Preston and the children, Maude, Florence and John. As they ate their food each girl talked joyously of their new dresses. As soon as the dishes were done, Sarah put a large skillet on the iron-topped stove, still hot from cooking the noonday meal, and filled it with the new bag of un-roasted coffee beans. As the beans roasted, Sarah stirred them with a large spoon.

She stirred for a few minutes. Suddenly, she stirred a little higher ... and higher still. Sarah remarked, "Something is happening to my eyes ... I cannot see!" Maud took the spoon and Florence moved the skillet to a place on the stove away from the heated area. Sarah touched a nearby chair and sat down. In a few minutes she told her grandchildren that she was blind. This time the "spell" had not passed.

Sarah comforted her grandchildren and Preston and tried to show them just how she could walk to any spot she chose in the kitchen. She even went straight to the water pail and served herself a gourd dipper of cool spring water.

All fell quiet. The kitchen was filled with the aroma of the roasting coffee beans and from the barnyard came the sound of a rooster crowing followed by the gobble of the turkey gobbler. Sarah snapped, "Now, let's finish these dresses." The girls cut a length of thread from the spool



The Turkey Dress, continued:

and one of them threaded her needle. Sarah knotted one end of the thread and began to assemble backs, fronts, sleeves and cuffs. At time she asked each girl to hold her dress up against their bodies. Maud and Florence could tell what was to come next at each stage of the dress assembly. When it was chore time the girls went at once to their usual tasks. On returning to the kitchen they found their grandmother frying potatoes that she had peeled and sliced.

When Preston and James arrived for their supper Sarah remembered the footsteps of each and greeted both of them cheerfully in her usual way. The girls explained that Grandmother had another spell with her eyes, and this time the sight did not come back. Sarah was blind. She quickly explained that she would be able to do her usual work and that she was in no pain.

Sarah asked her granddaughters to show their father the progress that had been made on their new dresses. Preston and James were unbelievably surprised and greatly pleased to realize how beautiful the needlework was that Sarah was doing.

Each day brought the chores and the family meals, and it also brought much progress on the new dresses. A discussion arose one day as to where they would go to wear their new dresses for the very first time. Finally, they decided that the Sunday church service would be just the place to introduce their new creations, buttons and all. Circuit riding ministers were scheduled to hold services on certain Sundays, and this coming Sunday was the time of their service.

Everyone was up early on Sunday morning. The breakfast and chores were hurriedly finished and the family quickly dressed and soon departed to hear the preacher. The girls were a model of good behavior and the kinfolk and neighbors loved their new dresses. Also, they were amazed at Sarah's ability to do such beautiful sewing without ever seeing one stitch.

The minister was so well received that he agreed to have an afternoon service and everyone could come back with their neighbors. While his sermon as in progress a heavy summer rainstorm passed over the neighborhood and a bright sun greeted the parishioners as they started to their homes.

At the Richey home a lunch was quickly prepared and enjoyed by everyone. Sarah suggested that it might be late when they returned from the afternoon church service so perhaps it would be best to do as many of the farm chores as possible. If all were careful, the chores could be done without even changing from their new dresses. Off Florence went to feed the daily grain to the hens and turkeys. Maud was starting out with the basket to gather the new-laid eggs. Sarah cautioned, "Watch the gobbler!" As the grain fell like raindrops where Florence had tossed it, Maud dashed toward the henhouse to take the eggs from the next boxes.

Like a flash, this turkey gobbler saw his chance to attack. He rushed across the muddy chicken yard and pounced unsuspecting Maud ... new dress and all. Down she went! Forgetting all about the eggs, she jumped up to brush off the dirt and mud where her dress had been soiled. But, alas, it was no use hoping for such a quick remedy for her predicament. As soon as Maud had returned to the kitchen Sarah and Florence tried to clean the dress enough that it might be worn to the afternoon gathering. It was a lost cause. The dress was hung up and was to be washed on laundry day and Maud put on an older dress for the trip to the church services.



The Turkey Dress, continued:

The girls sat beside each other and everyone admired the pretty dress that Florence was wearing. Maud sat thinking about the man old turkey gobbler. She even secretly hoped that something awful would happen to him.

Next day when the girls were back at doing their chores they found the chicken yard littered with turkey feathers. Some wild animal, perhaps a bobcat, had killed the old turkey gobbler and had eaten almost all of his plump body.

Many years later when Maud had her own children and chicken yard one of her older daughters asked, "Why can't we have some turkeys?" This is when the story of the turkey and the dress was told.

Maud's poultry never had a turkey in it. And so this is the way it took place along Skaggs Creek in Barren County Kentucky.

**LOVING SPRINGS BAPTIST CHURCH**

Contributed by Mary Frances Campbell, Glasgow, KY.

In the Fall 2006 issue, the Editor asked if anyone had any further information on the old churches in the County. Mary Frances Campbell graciously submitted the following information on her church that we are glad to present here.

"A Decision was made to build a church in the lower slash community. They were attending church at Old Rocky Hill and Glasgow Junction (now called Zion Hill). The church was organized July 31, 1914. Seven chartered members got their letters, namely: Sisters Mary K. Smith, Ida Shannon Smith, Brothers Wheeler H. Duvall, Will M. Burton, Zachariah Duvall, Y. W. Starks, Logan Burton. The first pastor was Rev. John France. Bro. W. H. Duvall was the first secretary and he named the church. The first deacon we know about was Frank France. After organizing service was held at Gum Spring School Building. In 1917 Mr. Milam gave the church ½ acre of land to build a church. The following have served as pastors: Reverends John France, J. R. Scrivener, T. Vaughn, G. E. Curry, W. M. Bradley, Jim Ford, Hubert Cook, W. H. Duvall, Leslie Rhodes, G. B. Page, Thomas Anthony and Shawn Sales, our current leader. Rev. G. B. Page served us 31 ½ years.

"In 2005 we purchased 3 ½ acres of land. The Carpenters for Christ, The Kentucky Builders (brothers from all over the United States and local co-workers) came in to help us build a 7,000 ft. church. We had our first serving in the building on the second Sunday in September 2005. The two oldest chronological members are Sis Madeline Brown and Bro. J. T. Huffman. Mary F. Campbell has been a members since 1942."

**Hopewell Baptist Church Celebrates 123<sup>rd</sup> Anniversary**

Hopewell Baptist Church in Glasgow KY recently celebrated their 123<sup>rd</sup> anniversary. Pastor Fred K. Haynie preached in the morning service and Rev. Joe M. Sullivan and the Seventh Street Baptist Church of Bowling Green were in attendance. The church began in 1883 when a small group of regenerated baptized believers in Jesus Christ recognized the need for a place of

worship and Christian fellowship. The Hopewell Missionary Baptist Church, Black, became a reality and the Rev. J. Fisher became the first pastor. The present building was erected in 1889-1903 time frame . Eleven pastors have served the church; Rev. Haynie has served for 44 years. In 1884, the Union District Association was organized at Hopewell.



### Singular and Deadly

Description Given a New Malady Prevalent at Glasgow, Ky. Glasgow, Ky., Nov. 29 [1896]. – A singular and deadly malady, which has been baffling the skill of the physicians, has broken out in the Coral Hill neighborhood in this county and the people residing within the infected region, which embraces an area of about three miles square, are greatly excited and alarmed.

“The disease made its appearance about two weeks ago and among well-to-do people, whose premises were in good sanitary condition. It is a highly contagious disease and is pronounced by the physicians to be epidemic malignant erysipelas. The victims are first seized with pain in the lower extremities, the ankle or knee and in some case the pain has first been felt in the wrist, and this is followed by a chill. Inflammation sets in and manifests itself in some cases in the throat, in some in the chest and in others in the face. The skin turns black and the tongue assumes a brownish hue. In one case the tongue turned perfectly black and was terribly swollen. About 30 per cent of the cases have been fatal. None of the unfortunate people stricken have so far recovered, but it is believed that the other seventy percent will get well. Some of the persons afflicted died with a few hours after being taken ill. No other cases like these are known to exist in any other section of the country.

“Every possible precaution is being taken to prevent the spread of the disease. For the safety and health of the people in adjoining communities the state board of health in conjunction with the local board, by means of printed circulars liberally distributed, will urge all persons to keep away from those afflicted.

“All of the physicians in the county are constituted a board of safety and they will advise with each other and do everything possible to check the progress of the diseases and to confine it to its present limits.” (The Knoxville Journal, 30 November 1896). This was also known as St. Anthony’s Fire in older days.



**BARREN COUNTY LAND GRANTS**

Continued from Volume 34, Issue 3, Fall 2006.

For information on land grants and other land records, see the State of Kentucky Land Office at:  
<http://sos.ky.gov/land/military/default.htm>

Last Name, First Name, Acreage, Book Recorded, Survey Date, Property Location

Sample Matthew	200	20	9- 5-1799	Big R
Sample Matthew	200	24	8-29-1799	Trace Creek
Sample Moses L	30	N-2	6-12-1838	Glovers Creek
Samples Isaac N	50	I	2-22-1821	Glovers Creek
Samples Isaac N	24 1/4	16	5-29-1845	Big _____
Sampson Polly	200	26	9- 4-1799	Trace Creek
Sanders G W	87	26	1- 5-1848	Dry Creek
Sanders H W	7	97	7-24-1877	None
Sanders Hiram	45	67	1-10-1866	None
Sanders Martin	40	19	10-21-1846	Nobob Creek
Sanders Nelson	100	K	5-29-1822	Scags Creek
Sanders Presley	200	21	9-18-1799	Beaver Creek
Sanders Robt J	40	65	3-31-1865	Skeggs Creek
Sanders William	33	F	9-30-1819	Scages Creek
Satterfield Jeses	70	E	4- 8-1818	Fk Big R
Saunders Nelson A	20	E-2	12- 2-1814	Glovers Creek
Savage William	50	U	7-23-1823	in the slash
Scott Jno	137	3	11- 1-1804	Line Creek
Scott Joseph	100	2	7-16-1802	Fk Beaver Creek
Scott Joseph	200	27	8-27-1799	Fk Beaver Creek
Scott Thomas	65	B	7- 6-1816	Skaggs Creek
Scott Thomas	100	B	5- 5-1816	Fallen Timber Creek
Scott Thos	100	23	12-11-1816	Nobob Creek
Scrimager Joseph	171	57	1- 8-1858	E Fk Little R
Scrivener James W	6	67	12-18-1865	Boyds Creek
Scrivner John H	5	66	3-30-1865	----Creek
Selcer Hardin	115	16	12-11-1810	R
Self Allen	35	11	11-20-1843	None
Self Presley	14	97	2-15-1877	None
Settle Thornton	32	C	4-23-1817	Bever Creek
Settle Thornton	10	C	4- 3-1817	Bever Creek
Settles Wm	100	3	3-21-1838	Sinking Creek
Settles Wm	31	3	10-15-1837	Sinking Creek
Shackleford Allen	10	10	10- 6-1842	None
Shackley Charlton	32	P	10-11-1823	None
Shannon Saml	75	20	1-19-1846	Little R
Shannon Saml Sr	20	16	10-29-1845	Knob Lick
Shannon Samuel	10	E-2	3-13-1834	None
Shannon Samuel	60	E-2	6-20-1832	R
Shannon Wm P	20	Y	3-28-1828	Beaver Creek
Shannon Wm P	10	45	12- 1-1855	None
Sharp Maxwell	200	23	11-19-1814	R
Shaw Nancy	10	B	12-20-1815	None
Shaw W R	15	79	7-20-1870	None
Shaw Wm R	95	79	7-20-1870	None
Shaw Wm R	40	80	2-23-1871	Green River

Land Grants, continued:

Shelton David	4 1/2	2	10- 2-1837	None
Sherley Jos	30	49	3- 6-1857	R
Shikle Peter	157	27	4- 1-1825	R
Shipley Nathaniel	135	11	9-12-1807	Hurricane Creek
Shipley Reuben	100	F	4-30-1818	Mashes Creek
Shipley Robt	230	10	5----1807	Big R
Shipman Daniel	100	1	3-14-1805	Sinking Creek
Shirley Benj	30	22	12-18-1815	White Oak Creek
Shirley Daniel	200	A	12-12-1815	None
Shirley George	3	34	5-28-1851	Blue Sp Creek
Shirley George	10	34	5-28-1851	Blue Sp Creek
Shirley Henry	200	33	6-27-1850	None
Shirley Henry	15	33	6-14-1850	None
Shirley James	70	Z	5- 5-1830	None
Shirley James	200	7	7-25-1799	None
Shirley Moses	200	3	7-16-1799	White Oak Creek
Shirley Richard	30	P	4- 9-1823	None
Shirley Richard	10	I-2	11- 4-1836	White Oak Creek
Shirley Richard	200	9	4-20-1810	E Fk Big R
Shirley Richard	200	16	6- 8-1799	None
Shirley Richard	90	25	11-10-1817	None
Shirley Thos	200	7	7-20-1799	Blue Spring Creek
Shirley Thos Jr	200	10	8----1799	White Oak Creek
Shirley Wm	50	Z	4-29-1826	Blue Spring Creek
Shirley Wm	200	11	8-16-1799	Blue Spring Creek
Shirley Wm	200	14	8- 1-1799	Blue Spring Creek
Shives Joseph	30	27	1-17-1849	Glovers Creek
Shives P A	18	26	4-12-1848	Clay Lick Fk
Shockley David	50	C	9-24-1817	None
Shockley Lemual	50	E	9-24-1817	Blue Spring Creek
Shockley Samuel	165	A	4-24-1816	None
Short Josiah	190	21	9-27-1807	Big R
Short Juseph	45	C	5-19-1817	None
Short Lanman	100	D	3-31-1817	Big R
Short Moses	50	F	4-28-1818	None
Shuffett Francis	240	G-2	4- 9-1835	None
Shuffett Jacob	20	R	12-15-1823	In the slash
Shuffitt T G & F H	45 1/2	60	2- 7-1860	None
Shuffolt Jacob	50	F	4-23-1819	Little R
Sidden James	95	26	11-23-1805	Peter Creek
Sidden William	50	H	2- 7-1820	Glovers Creek
Siddens James	46	B	8-31-1817	Indian Camp Br
Siddens James	95	26	11-23-1805	Peter Creek
Siddens William	75	M	12-17-1821	Peters Creek
Siddens William	25	M	1-11-1822	Siddens Creek
Siddens Wm	200	21	8- 5-1813	Peter Creek
Siddens Wm	100	23	2-28-1816	N Fk Glover Creek
Siddens Wm	15	100	2-22-1881	None
Siddons William	72	E	7-17-1817	Tram Creek
Sides Henry	145	10	9- 7-1807	Figure 8 Creek
Sides Jno	100	27	3-29-1805	R
Sides Jno	30	27	11-27-1805	R
Simmons John G	40	28	4-27-1849	Trace Creek
Simmons Johnson T	21 1/4	61	3-22-1861	Little Glovers



Land Grants, continued:

Simmons Jordan	140	44	6- 1-1855	Little Creek
Simmons Jordan	10	44	6- 1-1855	Trace Creek
Simmons Valentine	100	9	11- 2-1805	Green River
Simons Jno	30	15	11-10-1804	Green River
Simons Nancy	15 1/2	60	3- 8-1859	None
Simpson Michael	200	2	11- 5-1804	Skeggs Creek
Simpson Thos	150	11	8-16-1805	Glover Creek
Siry Arch	100	42	2-28-1854	M Fk Little R
Skaggs Richard	100	28	11-15-1804	None
Skeggs Frederick	200	11	8-10-1799	Swamp Lick
Skeggs Henry	200	11	7-10-1799	None
Slaughter Thos K	200	19	5-26-1808	Oven Sp
Slayton Callum H	15	C-2	3-15-1833	None
Slimmons Washington	50	D	11- 9-1818	White Oak Creek
Slinker William	80	K	4-18-1822	Little R
Slinker William	20	K	4-18-1822	Little R
Slinker William & Lewis	23	C	1- 8-1817	Little
Slinker Wm & Lewis	55	D	12-17-1817	None
Slinker Wm & Lewis	20	D	12-17-1817	None
Slone Archibald	200	20	11- 4-1806	E Fk Big R
Slusher John	100	A	7-26-1817	Little R

To be continued Spring 2007 issue.

## UPCOMING EVENTS

### NORTHEAST TENNESSEE HERITAGE SYMPOSIUM

Discovering Pathways to Your Heritage. April 20-21, 2007, Jonesborough Visitor's Center, 117 Boone Street, Jonesborough, TN. Nationally known lecturer, Mark Lowe, will present a workshop from 7-9pm, Friday evening on locating your Civil War Ancestors, "Statesmen, Scalawag or Soldier." A number of Union blue soldiers maintained close ties to the Confederacy. Others crossed lines to change uniforms. Learn about your border state ancestor and how to find their uniform of choice or no uniform at all. Learn about compiled military service records, pensions and more.

On Saturday, Mr. Lowe will make two presentations; the morning session will be "Developing a Research Plan While Heading to the Courthouse." He will discuss research findings, sharpening techniques, evaluating the sources and mapping a new course. In the afternoon, he will close with a light-hearted view of burial customs and cemetery stories and look at our culture with his talk, "Coffins, Urns and Zip-lock Bags."

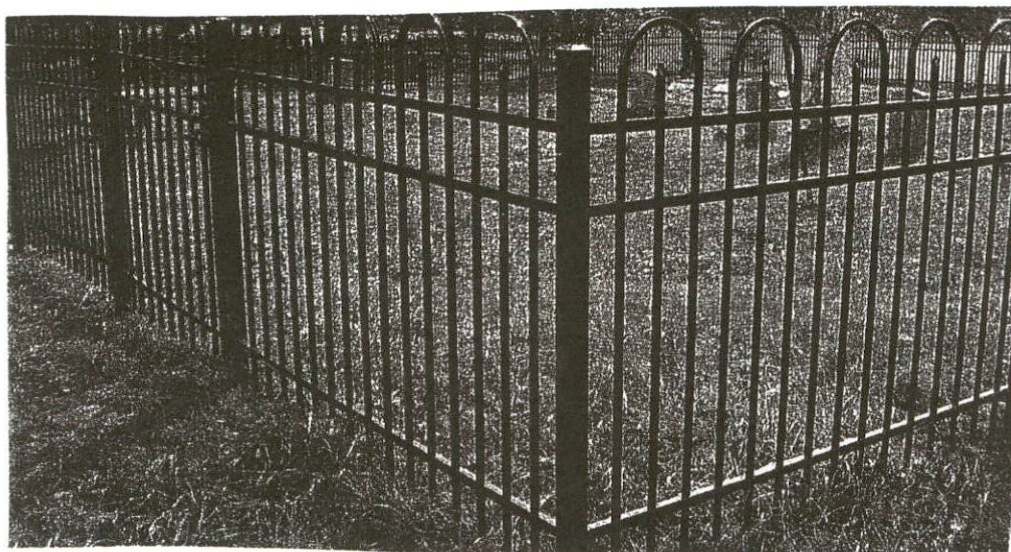
The second speaker, Chere Henderson, is Director of the East Tennessee Historical Society and will present "Resources Found in the First Families of Tennessee and Civil War Ancestor Files."

Saturday's program will be from 8:30 am to 4:30 pm and participants are encouraged to network during the breaks and catered luncheon. The Friday even workshop cost is \$15.00. Saturday, all day, including lunch, \$35.00 before March 17, 2007; \$40 after March 17, 2007.

Upcoming Events, continued:

This event is sponsored by the Watauga Association of Genealogists, Jonesborough Genealogical Society and the Washington County Historical Association. For more information contact: Mary Jane Erwin, 500 Red Oak Lane, Kingsport, TN 37663-2550 or [maryerwin@charter.net](mailto:maryerwin@charter.net) or Donna Cox Briggs at [dcoxbriggs@charter.net](mailto:dcoxbriggs@charter.net) or Betty Jane Hylton at [bjhylton@comcast.net](mailto:bjhylton@comcast.net). You may visit the web page at [www.rootsweb.com/~tnwashin/heritagesymposium.html](http://www.rootsweb.com/~tnwashin/heritagesymposium.html). Information will be available from these ladies on overnight accommodations and special rates.

**Progress at Bell's Tavern**



(Photograph courtesy Brad Dickerson, Glasgow Daily Times, Oct. 5, 2006).

The restoration efforts at Bell's Tavern in Park City, KY continues. Ground was recently broken on a new pavilion that will be at the site along with construction of a new fence to enclose the site's 200-year old cemetery that has been finished. It was the hope of City clerk Jason Nuetzman that the pavilion would be completed within 6 weeks. They were also planning on adding a new entranceway including additional parking. Additionally, a bike trail connecting Park City to Mammoth Cave National Park is under consideration. Projects are funded by monies from the Kentucky Transportation Cabinet. Neutzman stated: "We want the area to be a focal point of the community, a place where visitors and families alike can come and enjoy all we have to offer."

**IN MEMORY OF ELIZA J. GARNETT McMURRY**

Dallas (TX) Morning News, Nov 23, 1890, Section 1, page 5.

"IN MEMORIAM. From the beautiful memorial tribute and interesting biographical sketch by M. M. DAVIS of the late Mrs. E. M. McMURRY, whose recent death occurred in this city, we quote the following:

"Eliza M. McMURRY was born in Kentucky May 12, 1818, and died in Dallas, Tex., Nov 4, 1890, at the residence of her children, Mr. and Mrs. J. R. JOHNSON, on McKinney avenue. She was the daughter of the mathematician, Joseph WILLIS, and Sallie TWYMAN



In Memory, continued:

GARNETT, the latter a daughter of the distinguished jurist, Judge John GARNETT, of Virginia, a lineal descendant of Sir William GARNETT, baronet of England. the deceased was a close relative of the families of the eminent theologian, James M. PENDLETON of Philadelphia, and President Leslie WAGGONER of the state university. She was also a niece of Gen. Samuel SPENCER and of William T. WILLIS, lawyer, orator and statesman, who, with McKEE and Harry CLAY, poured out his life's blood at Buena Vista in defense of Texas, and over whose ashes grateful Kentucky has raised her monumental marble at her capital.

"Eliza M. WILLIS, possessed of delicate beauty and aided graces of mind and heart, was married Nov. 10, 1836, to William M. McMURRY of North Carolina, a man of commanding personal and brilliant power. Around their hearthstone of culture and happiness gathered such names as ROGERS, GORIN, GARNETT, BRYAN, BELL, McFERRAN, LEWIS, NUCKOLS, Tom MARSHALL and others well known to Kentucky chivalry and clothed with her laurels of honor. In 1859 they removed to Memphis thence to Clarksville, Tenn., where in 1863 the husband died, and the wife, Naomi-like, returned to her old Kentucky home. In October, 1863(?), she came to Dallas to bless and brighten the home of her only daughter. Her oldest child, a son, was for a number of years connected with the Custom-House at New Orleans, but at his death, May, 1870, was Judge of Grant parish, Louisiana. Mrs. J. R. JOHNSON, her only remaining child and a heart's blessing to her mother, has had the sad but sacred pleasure of tirelessly watching at her bedside during her long illness and of comforting her with a daughter's deathless devotion, joined by her husband whose love was no less deep than her own, as their mother passed into the Jordan of death, attended by friends, tender and true, when for her "the Day-star of Eternity shimmered in life's gloom."

"During the great civil war one of those strange things, sometimes seen in human struggle, was witnessed in her house; father and son, true to noble manhood's convictions rather than the emotions of their very souls, espousing the colors and the cause of different sides; the father chose the blue under Gen. GRANT while the son wore the gray and followed PILLOW and was a member of his staff of aides, while the brother - the late Col. WILLIS of El Paso - cast his lot with Sterling PRICE and at Vicksburg, when the battle's fury raged his commanding form was seen, true to the heroism of his name, at a cannon, in danger, pouring a sheen of fire and volleys of death into the columns of the advancing foe. The heart of this noble woman was with the cause of the Southland, yet the clinging love of this wife, mother and sister lingered lovingly amidst the hosts of both armies, and you will not question why she was so often seen with friends upon the battlefields of death almost before the smoke had cleared away or the echo of the mad artillery had hushed its roar, leading her baby girl with one hand, and offering succor with the other, nor way, like a ministering angel, she was so often found in the hospitals of either side. Yes, found "Within the wards of the white-washed halls Where the dead and the dying lay, Where wounded by bayonets, shells or balls, Somebody's idol was borned each day."

"One day ministering to some hero from the north, the next kneeling at the couch and aiding some noble lad from the land of the magnolia, Who of you, as you think of her there, can fail to couple her name with that of Grace Darling? The virtues that grace gently womanhood shone respondent throughout her life. Modest, gentle, tender and loving she was ever ready to minister to the extent of her ability with heart, hands and means to the poor and distressed, always ready to drop words of truth and cheer into every heart, always found counseling patience and peace to the end of her life. She was a member of a large family, all of whom preceded her to the Golden shores; the death of her youngest sister, to whom she was deeply attached, occurring just one month before her own death, and of which in life she never knew.



In Memory, continued:

"During her long illness of 104 days with fever and other complications, she was the recipient of many tokens of love, and she often wondered why she should be thus so tenderly remembered in a land of comparative strangers, but into her heart came the comfort that the Father was returning to her "the bread she had cast upon the waters" of the long ago. Gratitude and patience, the queenliest of all virtues, were in her character beautifully exemplified. Every favor elicited grateful acknowledgement, and even when unable to speak her peaceful, soul-lit face and the faint clasp of her hand sacredly told of her peace, her gratitude and her blessing. During her more than one hundred days of suffering, ending in death, not one note or reproachful impatience, was extracted from her suffering soul; quietly, calmly and without a murmur she waited the end, her faith clinging all the closer to the great White Throne.

"In her earlier womanhood her heart sought the "pearl of great price," and since coming to Texas she united with the Commerce street Christian church of this city in December, 1885, of which she remained a faithful member, and as the cold waves of death were beating about her, her soul gave christian evidence of her supreme trust in her blessed Master, and her last sacred words to her loved ones will be source that will comfort them forever and aye. And thus, after a long life of noble purposes recrystalized into noble deeds, "the angels have borne her spirit away upon their snowy winds," within the pearly gates of the bright Beyond, and fittingly chosen at her funeral services were the words of the text, Revelations xiv, 13: "Blessed be the dead who died in the Lord from henceforth; yea, saith the spirit: that they may rest from their labors and their works do follow them."

"Touchingly sweet has been the esteem in which the life of this noble woman has been held as has been tenderly evidenced by the tears of friends and the wealth of beautiful floral offerings, covering her casket and filling the rooms of mourning: silently they have told of Kentucky friendships begun fifty years ago, as well as the esteem of later years born in the hearts of Texas womanhood. All that is mortal of her has been tenderly laid to rest in Trinity cemetery: down into the grave with her have gone sweet flowers, typical of her life; there rest upon her bosom till the Judgment day while rosebuds offered by childhood's hands, and her grave has been covered by sweet tokens placed and strewn in love by gentle hands and thus we leave her to peaceful sleep, and God help us to emulate her christian example left as priceless heritage to all who loved her; and now the following beautiful lines offered by a friend are a fitting close to this tribute to the memory of her life:

"Folded Hands. Pale, withered hands, that nearly four-score years. Have wrought for others, soothed the burst of tears. Rocked children's cradles, eased the fever's smart, Dropped the balm of love in many an aching heart: Now stirless, folded, like wan rose leaves pressed, Above the snow and silence of her breast, In mute appeal they tell of labor done, And well-earned rest that came near the rise of sun. From her worn brown the lines of care have swept, as if an angel's kiss, the while she slept. Has smoothed the cobweb wrinkles quite away, And given back the peace of childhood's day. And on her lips the faint smiles almost said, "None know life's secret but the happy dead. So Gazing where she lies we know that pain And parting cannot cleave her soul again. And we are sure that they who saw her last, In that dim vista which we call the past, When never knew her old and at the River's side, Remembering best the maiden and the bride, Have sprung to greet her with the olden speech, The dear sweet names no later more can teach. And, 'Welcome home they've cried and grasped her hands: So dwells the mother in the Paradise of lands."



GORIN GENEALOGICAL PUBLISHING

205 Clements Avenue, Glasgow KY 421413409 [sgorin@glasgow-ky.com](mailto:sgorin@glasgow-ky.com)

**Mt. Pisgah Baptist Church of Barren Co KY, Vol. 2**, 1900-1962. Large membership list, minutes of the monthly meetings during this time frame. Contains a large number of obituaries. Many Barren Co families attended here. 138 pages including full-name index. \$28.00 which includes shipping and handling. KY residents please add 6% sales tax.

*Editor Speaks at Kentucky Historical Society and Kentucky Genealogical Society Meeting*

Traces Editor, Sandi Gorin was the recent speaker at a large gathering of the Kentucky Historical Society and Kentucky Genealogical Society in Frankfort, KY. This monthly joint meeting is always well attended and presents programs on various topics of interest to the researcher. The meetings are held at the Kentucky Historical Society Library and have excellent facilities. Gorin spoke on "Ways of Publishing your Genealogical Books" which included several ways for the family researcher or historical compiler to get their works in print. Topics including self-publishing or on-demand publishing, using a recognized publishing company, tax implications and forms required, licenses, copyrights, costs and internet publishing. The program was presented on the local cable access channel.



**MONROE COUNTY--JOHNSON CEMETERY--HUNTS**

Contributed by Charles R. Arterburn, [crart02@yahoo.com](mailto:crart02@yahoo.com)

Several descendants of William G. "Billy" Hunt (ca. 1819-w.p. 1898, Barren County) and Catherine Shive Hunt have been reliably confirmed that both are buried in unmarked graves in a

Johnson Cemetery, continued:

small family cemetery at the Big Valley farm of Keith and Carol Light, in the community of Lamb, Monroe County, Kentucky. Joe Black Johnson is also buried there, also without a gravestone. This cemetery has no public name, but the Johnson family has apparently owned this farm for more than one hundred and twenty years. A family progenitor, David Johnson (1820-1883), is buried there, along with other members of this Johnson family. "Arterburn, Francis, McCue, Ward, and Wilson" are the other surnames to be found there. This cemetery was not included in Peden's Monroe County cemetery book, but has since been published (see "Kentucky Ancestors," Spring 1992, p. 224). There are 13 inscribed gravestones along with some native stone markers and an unknown number of unmarked graves.

Why the Hunts are there seems a mystery to their living descendants I have talked to. Billy & Catherine Hunt's home farm was on Antioch-Tracy Road, near Antioch Church, a couple of miles away in southwest Barren County. The Johnson and Hunt families intermarried, and this could be a clue. It's also possible that the Hunt family once owned this farm. One Johnson family tradition associates the early history of this farm with the Flowers family. Joel Flowers was an early settler in the community, but doesn't appear in the Monroe County Census until 1840. Tradition also connects this farm with an early slaveholder, possibly Flowers. The surviving stone spring-house is believed to have been built by slaves, and the traditional sites of slave quarters and their burying ground have been preserved in local memory. As far as I can tell, neither of these Hunt or Johnson families ever owned slaves.

David Johnson first appears in the Monroe County Census in 1860. The earliest inscribed Johnson stone in this cemetery is for a 2-year old, the daughter of J.N. Johnson, who died in 1877. The earliest inscribed stone there belongs to William Wilson, also a 2-year old, who died in 1856. Although some of the other surnames found in this cemetery may have been relatives (of the Johnson's) or tenant farmers, it seems impossible to tell whether any might represent an earlier landowner.

Billy Hunt's grandfather, Jonathan Hunt, a veteran of the American Revolutionary War from Rowan County, North Carolina, was in southwest Barren County by 1810, in the vicinity of what would later become the boundary with Monroe County--around Fountain Run, Tracy, and Lamb. Billy's grandmother, Alceia Berry Hunt, apparently died early, in Kentucky. Alceia Berry Hunt could have been an early burial in this cemetery. Jonathan moved on to Morgan County, Missouri soon after 1840 to join some of his other children and died there. But Jonathan's son, John Hunt (1792-1855)--Billy's father, and his mother Martha "Patsy" Simmons Hunt (1799-1859), remained behind. Their burial sites are unknown. One possibility for John and Patsy could be the old Simmons family cemetery at Fountain Run, but they might be in Johnson Cemetery, at Lamb, especially if John's mother was there. (The Shive family cemetery is in Metcalfe County.) Perhaps someone else can help fill-in some of the missing pieces of this puzzle!

### **Bethlehem Methodist Church**

Contributed by Charles R. Arterburn, crart02@yahoo.com

A photocopy of the original is available at: Kentucky Library, Bowling Green; Kentucky Historical Society, Frankfort, and; Kentucky United Methodist Heritage Center, Owensboro.



Bethlehem Meeting/Society of the Methodist Episcopal Church, Tompkinsville (initially Burkesville) Circuit, Columbia District, Louisville Conference, was first established in 1839 with the following charter members: Elzia Arterburn, Eleanor Boles, Martha Chism, Nathan B. Chism, Clancy Daniels, Jane England, Nancy Eubank, William B. Eubank, Quincey Fitzgerald, James Johnston, Sarah Johnston, Elizabeth Lane, Martin Payne, Catherine Ray, and Jefferson Turner.

The original property for Bethlehem Meeting House, located on Bethlehem Church Road (off Hwy 63), near the communities of Jeffrey and Mud Lick, Monroe County, Kentucky, was conveyed in a deed of gift by John and Elizabeth Johnston, in 1840. The original trustees as named in this deed of gift were: Elzia Arterburn, Samuel Ray, and William Turner. The first meeting house was expanded to accommodate a Masonic Lodge, in 1872. This original meeting house was moved across the road and replaced by the present building, in 1953. The first building is still occupied by H.A.M. Henderson Lodge #515, F&AM.

Bethlehem Class/Society converted to the Methodist Episcopal Church, South, in 1845, and retained this affiliation until reunification, in 1939. Since the denominational merger in 1968 with Evangelical United Brethren, Bethlehem United Methodist Church has remained an active congregation to the present day.

The following “class” or membership roster of the church appears to date to about 1852-54, with some notations made as late as 1858. I apologize in advance for any transcription errors. Some names have either been spelled phonetically or appear to be incomplete. Bracketed contents have been added for clarification, or represent conflated information from different parts of the document. Grateful acknowledgment is due the current owner of the original, Judy Turner, for making it available: LE indicates Local Elder; CL is Class Leader.

- |                                       |   |
|---------------------------------------|---|
| 1. James L. Greenup, LE               | 25. Thomas G. Maury                           |
| 2. Kitty Greenup                      | 26. Rachel Maury                              |
| 3. Samuel Ray, ?S [Rec.Steward]       | 27. Eleanor Bowles                            |
| 4. Mary Ray                           | 28. George W. Lee                             |
| 5. Mary Jackson                       | 29. Catharine Lee                             |
| 6. Samuel Ray                         | 30. Quincy F. Gerald                          |
| 7. Phebe Ray                          | 31. Jane England                              |
| 8. Robert [J.] Turner, Exhorter & CL] | 32. Isabelle Daniel                           |
| 9. Elizabeth Turner                   | 33. Sarah Ann Daniel                          |
| 10. Wm. Turner                        | 34. Nancy G. Daniel                           |
| 11. Fanny Turner                      | 35. Nancy Daniel                              |
| 12. James [M.] Turner                 | 36. Lane Lewis aged 66, deceased Aug 24, 1852 |
| 13. Mahala Turner                     | 37. Priscilla Sabine                          |
| 14. Robert Smith                      | 38. Edna Boyd                                 |
| 15. Lucinda Smith                     | 39. Lucy Compton                              |
| 16. Wyatt Turner                      | 40. William G. Bowles                         |
| 17. Louisa M. Turner                  | 41. Nancy M. Bowles                           |
| 18. Priscilla Newman                  | 42. Nancy Payne                               |
| 19. James Johnston                    | 43. Mahala Dickerson                          |
| 20. Catharine Johnston                | 44. Mary Jones                                |
| 21. Jesse Waller                      | 45. William B. Eubank                         |
| 22. Sarah Waller                      | 46. Nancy Eubank                              |
| 23. Len [Leonard] H. Maury            | 47. Lydia Jones                               |
| 24. Virginia A. Maury                 |   |

Bethlehem Methodist, continued:

- |                                   |  |
|-----------------------------------|--|
| 48. Samuel Pickens, Exhorter      | 97. Elias Maybery} moved without letter    |
| 49. Jemima Pickens                | 98. Sarah Mayberry}                        |
| 50. John Pickens                  | 99. John Headrick                          |
| 51. Mary Ann Pickens              | 100. Martha A. Headrick                    |
| 52. Gilly Ann Hilman              | 101. Elizabeth Headrick                    |
| 53. Aman Barron                   | 102. Samuel F. Gerald                      |
| 54. Sidney Barron                 | 103. Nathan Hedrick                        |
| 55. Rhoda Kinslow [crossed out]   | 104. John Burge                            |
| 56. Thompson Peden                | 105. John Wheelock, dead[?], Oct 1854      |
| 57. Phebe Peden                   | 106. Thomas Webb                           |
| 58. John Sabine, gone to Baptists | 107. Susan Webb                            |
| 59. Nancy A. Keen                 | 108. Julia Charter                         |
| 60. Joseph Hood                   | 109. James A. Johnston, dropped by request |
| 61. John Johnston                 | 110. Catharine M. Johnston                 |
| 62. Elizabeth Johnston            | 111. Mary Ann Kelly                        |
| 63. Benjamin Gist                 | 112. Frances Turner                        |
| 64. Joseph Lee                    | 113. Jane Turner                           |
| 65. Cinthia Lee                   | 114. Silas Gist                            |
| 66. Martha Chism                  | 115. Alfred Page                           |
| 67. Martha Chism [same/daughter?] | 116. James Keen, dropped by request        |
| 68. Robert Chism                  | 117. Elizabeth Webb                        |
| 69. John R. Chism                 | 118. Almira Kelly                          |
| 70. James Chism                   | 119. Elizabeth Turner                      |
| 71. Nathan Chism                  | 120. Sarah Waller                          |
| 72. Margaret Doss, died           | 121. Sythia Waller                         |
| 73. Polly Ann Doss, now Jones     | 122. Mary P. Webb                          |
| 74. Alfred Doss                   | 123. Willa Ann [WilliAnn] Turner           |
| 75. Sarah Doss                    | 124. Baldwin W. Page                       |
| 76. Thomas Smith                  | 125. Elizabeth M. Johnston                 |
| 77. Margaret Smith                | 126. John S. Greenup                       |
| 78. Elisha England                | 127. James G. Gum                          |
| 79. Sarah England                 | 128. Jehu Gum                              |
| 80. Nancy J. Greenup              | 129. Frances Gum                           |
| 81. Richard H. Keen               | 130. William A. Gum                        |
| 82. William Johnson               | 131. Carder Kean                           |
| 83. Sarah Ann Johnson             | 132. Nancy Kellow                          |
| 84. Eli Keen                      | 133. Rebecca Bray                          |
| 85. Nancy Keen                    | 134. Andrew Kellow, gone dead[?]           |
| 86. Arbell Keen                   | 135. Andrew J. Hedrick                     |
| 87. Susan Keen                    | 136. Emeline Carder                        |
| 88. Mary Kean                     | 137. Elizabeth Kelly                       |
| 89. Abner Kean                    | 138. Eliza Jane Black                      |
| 90. Vashtie Kean                  | 139. Mary Ann Summers, gone[?]             |
| 91. Mary A. Hamilton              | 140. Margaret Maybery                      |
| 92. Jane Burge                    | 141. Catharine M. Kelly                    |
| 93. James T. Chism                | 142. Elbert Waller                         |
| 94. Sarah J.E. Chism              | 143. David Carder, Prob [probation?]       |
| 95. Joseph Hedrick                | 144. Rachel Carder                         |
| 96. Martha A. Hedrick             | 145. Francis Uptegrave                     |



Bethlehem Methodist Church, continued:

- |   |  |
|---|--|
| 146. Abner Peler                          | 8. Leroy Turner, gone to Missouri<br>no letter |
| 147. Lucinda Peeler, gone to Campbelites  | 9. Sarah Smith                                 |
| 148. Jesse Kellow                         | 10. Elizabeth Clarkson                         |
| 149. Elizabeth Carder                     | 11. Reuben G. Clarkson                         |
| 150. Anderson Shirley                     | 12. William H. Clarkson                        |
| 151. Elizabeth Shirley                    | 13. Joseph E. Turner                           |
| 152. Mary Chase                           | 14. Isaac Hedrick                              |
| 153. James O. Vest, dropped [crossed out] | 15. Martha Turner                              |
| 154. Ora Ann Baren, Pro cont [probation?] | 16. Martha Turner                              |
| 155. Margaret Pickens [crossed out]       | 17. Eliza Bowles                               |
| 156. Lydia Jobe                           | 18. Samuel Fitzgerald                          |
| 157. Mary ?. Greenup                      | 19. Samuel Ray, Sr                             |
| 158. Jonathan Carder                      | 20. Samuel Ray, Jr.                            |
| 159. Sarah Carder                         | 21. George Fitzgerald                          |
| 160. John Carder                          | 22. John H. Fitzgerald                         |
| 161. Amanda Ann Baker, cont               | 23. Thomas Sabine                              |
| 162. Sarah Amanda Hedrick                 | 24. Wyatt Ray                                  |
| 163. Margaret Ann Hedrick                 | 25. Dolly Martin                               |
| 164. Margaret Black                       | 26. Ginny Johnston                             |
| 165. Mariah L. Layne[?]                   | 27. Rachael Martin                             |
| 166. Elel[?] F. Gerald                    | 28. Benjamin Johnston                          |
| 167. Leotica[?] Lane                      | 29. Stephen Wooten                             |
| 168. Virgie Ann Hood                      | 30. Pelina Boyd} Feb 1852                      |
| 169. Mary Lee (by letter)                 | 31. Malinda Martin}                            |
| 170. John L. Clarkston} August            | 32. Matilda Thomas                             |
| 171. Nancy J. Turner}                     | 33. Rachel J. Payne                            |
| 172. Nancy A. Dickerson}                  | 34. Eliza Layne                                |
| 173. Lydia Hays}                          | 35. Sally Chism                                |
| 174. Margaret Carder}                     | 36. Stephen Chism                              |
| 175. Elizabeth Bartlett, Sept             |  |
| 176. Mary Ann Thomas} Oct                 |  |
| 177. Elizabeth Kingery}                   |  |
| 178. Mary Ann Eubank}                     |  |
| 179. Nancy Ann Eubank}                    |  |
| 180. William Chism                        |  |
| 181. George F. Gerald                     |  |
| 182. Harriet Boyd                         |  |
| 183. Woodford Boyd                        |  |
| 184. Leotica Eubank                       |  |

Members' names appearing outside of the above list:

1. John A. Turner
2. William B. Hughes
3. Nimrod Lunsford} gone to Tennessee without [?]
4. Elizabeth Lunsford}
5. Mary Lunsford}
6. Margaret A. Lunsford}
7. Edna Boyd, gone to Baptists [crossed out]

# South Central Kentucky Historical and Genealogical Society

Membership and Life Membership for 2006

001	Alvis, Phyllis	1211 W. Jornada St.	Pahrump, NV 89048-7193
002	Anderson, Margaret V.	505 Eagle Bend Rd.	Clinton, TN. 37716-3822
003	Anderson, Susan Renfro	618 E. 10th.	Sedalia, MO. 65301-5938
004	<b>Annis, Russell W.</b>	11112 Orr, NE	Albuquerque, NM. 87111-1860
005	Arterburn, Charles R.	900 K-B Lane	London, KY 40741-2507
006	<b>Bailey, Pascal E.</b>	588 Townhill Road	Taylorsville, KY. 40071-9637
007	Bailey, Sue Church	3817 Ashridge Dr.	Louisville, Ky. 40241-1652
008	Bain, T. Jayne Spear	1772 Williams Glen Blvd	Zionsville, IN 46077-1118
009	Bardin, Juanita	501 South Green Street	Glasgow, KY. 42141-2122
010	<b>Bastien, Paul</b>	80 Paul Bastien Ln.	Glasgow, KY. 42141-7880
011	<b>Beam, Maurice E.</b>	1218 Shawnee	Bowling Green, KY. 42104-4257
012	<b>Beard, Ken</b>	1012 Woodlawn Dr.	Glasgow, KY. 42141-2561
013	Beatty, David A., PE	9213 Auburn Ave.	Jeffersontown, KY. 40299-1603
014	Becker, Julia Drane	3890 Crestmont Drive	Santa Maria, CA. 93455-3028
015	Beckner, Frances	1672 Fairview Church Road	Smiths Grove, KY. 42171-9008
016	Bennett, Dora L.	887 S. Gassaway Rd.	Glasgow, KY. 42141-9744
017	Benningfield, Arland W.	2196 Janlyn Road	Louisville, KY. 40299-1718
018	Berry, Mrs. Gayle	1420 Glenview Dr.	Glasgow, KY. 42141-3513
019	Bird, David A.	17802 N. 23rd. Ave.	Phoenix, AZ 85023-2104
020	Bishop, Marlon J.	5008 Tahoka Drive	Grangurg, TX. 76049-5144
021	Bishop, William Sue	2415 Carlford Rd.	Pleasant Garden, NC. 27313-9279
022	Bittorie, Kay	2218 Hidden Woods Blvd.	Beavercreek, Ohio 45431-3392
023	Black, Mrs. Lois Grider	5333 Daniels Drive	Troy, MI 48098-3005
024	Bohlin, Joan	1513 Escondida Court	Santa Fe, NM 87507-5161
025	Borton, Robert	10605 Dry Creek Way	Louisville, KY. 40299-1287
026	Botts, Stephen R.	2220 New Salem Rd.	Glasgow, Ky. 42141-7411
027	Bowers, Ruth	402 William St.	Nokomis, IL. 62075-1150
028	Bowles, Edward H., Jr.	241 East 11th. Place	Hobart, IN. 46342-5908
029	Boyd, Mrs. James R.	1545 Shephardsville Rd.	Hodgenville, KY. 42748-9429
030	Brannan, Beverly W.	617 E Street N. E.	Washington, D.C 20002-5229
031	Brown, Mrs. Gloria J. Wilson	208 Hurst Drive	Old Hickory, TN. 37138-2802
032	Brown, Robert	14A East Burnam Road	Columbia, MO. 65203-3512
033	Burgess, Martha R.	738-D Avenida Majorca	Laguna Hills, CA. 92653-4437
034	Bush, Mrs. Dennis	104 Green Hills Drive	Glasgow, KY. 42141-1423
035	<b>Calhoun, L. E.</b>	10547 Finney Road	Glasgow, KY. 42141-7031
036	<b>Cannon, W. J.</b>	P.O. Box 133	Scottsville, KY. 42164-0133
037	Canup, Renee	319 Geissler Dr.	Lockport, IL 60441-3310
038	Carter, C. W.	645 Summersville Rd.	Greensburg, KY. 42743-8951
039	Chamberlain, Mary Ed	509A West Cherry St.	Glasgow, KY. 42141-1511
040	Chambliss, William J.	149 Goodrich Ave.	Lexington, Ky. 40503-1911
041	<b>Chapman, Robert B.</b>	1333 Santa Barbara Blvd Apt. 246	Cape Coral, Fl. 33991-2803
042	Christian, Michael A.	4602 Kevin Court	Jeffersonville, IN. 47130-9531
043	Christiansen, Mrs. Betty J.	3621 Georgia NE	Albuquerque, NM 87110-1434
044	Clack, Randall Gene	7902 Farina Way	Indianapolis, IN. 46259-6796
045	Clark, Sharon	3624 Swan Ct.	Fort Worth, TX. 76117-3037
046	<b>Clemons, Marna L.</b>	12120 Mil Pitrero Road	San Diego, CA. 92128-5269
047	Cox, Alan Depp	4519 Oak Chase Ln.	Eagan, MN 55123-1848
048	Cox, Ruth Depp	2711 Mulberry Lane	Greenville, NC. 27858-5846
049	Crabtree, Larry L.	120 West Church Road	Sterling, VA 20164-3803
050	Crabtree, Robert W., Jr.	308 Gwindale Road	Gadsden, AL. 35901-5618



# South Central Kentucky Historical and Genealogical Society

Membership and Life Membership for 2006

051	<b>Cross, Willie G.</b>	122 Vermont Ave.	Cincinnati, OH. 45215-2046
052	<b>Crowe, Joan Thompson</b>	130 Morgan St.	Versailles, KY. 40383-1429
053	Daniels, Anita P.	17617 SE 34th Circle	Vancouver, WA. 98683-8200
054	Dean, Mr. Lloyd	6770 U.S. 60 East	Morehead, KY. 40351-9035
055	Dewey, Geraldine	988 Missouri Valley Road	Riverton, WY. 82501-9711
056	Dishon, Kim	113 Hillwood Road	Glasgow, KY 42141-8862
057	Dow, Rose Mary	1080 Chinoe Rd.	Lexington, KY. 40502-3098
058	<b>Downing, Elizabeth</b>	6314 Ratliff Rd.	Camby, IN. 46113-9226
059	Downing, Susan	65 Erie Crescent	Fairport, NY. 14450-2472
060	Draper, Norma J.	1734 Old Buck Creek Road	Adolphus, KY. 42120-8771
061	Duvall, Sandra G.	200 Marmak Dr.	Glasgow, KY. 42141-3320
062	Elmore, Mrs. Margaret	115 Sandwood Dr.	Glasgow, KY. 42141-3321
063	<b>Fisher, Thruman E.</b>	P.O. Box 653	Dumas, TX. 79029-0653
064	<b>Fleming, Linda S.</b>	270 1st. Ave. Apt. 6B	New York, NY. 10009-2622
065	Forkan, Janet E.	15235 So. Hamlin Ave.	Midlothian, IL. 60445-3730
066	<b>Frost, Dr. Michael D.</b>	8910 West 62nd St.	Shawnee Mission, KA. 66202-2814
067	Gardner, Willis W.	2802 Lincolnshire Ct.	Waukesha, WI 53188-1372
068	Garland, Paul Griffith	2156 Date Palm Road	Boca Raton, FL 33432-7918
069	Garrison, Ray H.	848 Braemar Road	Flossmoor, IL. 60422-2204
070	Gentry, Margie	2796 Etoile Road	Glasgow, KY. 42141-8619
071	<b>Gilley, David G.</b>	1245 Woodsdale Farm Dr.	Shepherdsville, KY. 40165-5772
072	Goode, Mr. Cecil E.	180 Scottie Drive - Apt 167	Glasgow, KY. 42141-3567
073	Gorin, Sandi	205 Clements	Glasgow, KY. 42141
074	Grady, John Paul	4218 Oxhill Rd.	Spring, TX. 77388-5752
075	Green, Ray	911 Nelson Dr.	Melbourne, FL. 32940-1799
076	<b>Griffin, Lorraine M.</b>	P.O. Box 25712	Salt Lake City, UT. 84125-0712
077	<b>Hafling, Judy A.</b>	698 Anderson-Perkins Rd.	Edmonton, KY. 42129-9526
078	Hale, James E., Jr.	1855 Sandbar Dr.	Merritt Island, FL 32953
079	Hamm, Mrs. Jane Turner	3507 Pinecone Circle	Louisville, KY. 40241-2725
080	Hanes, Cyndi L.	117 Lankford Drive	Georgetown, KY. 40324-1186
081	<b>Harmon, Sandra</b>	2701 Cabernet Way	Rancho Cordova, CA. 95670-4811
082	Harrison, Martha Powell	1786 Capital Hill Church Road	Fountain Run, KY 42133-8544
083	Head, Carolyn B.	155 Dana Drive	Fayetteville, GA. 30215-3004
084	Henderson, Susan A.	555 Ash Street	Winnetka, Il. 60093-2603
085	<b>Hill, Margaret Lester</b>	489 Middle Gate	Irrington, VA. 22480-2416
086	Hollingsworth, Patricia E.	617 Jacana Court	Mt. Sterling, KY. 40353-8209
087	<b>Houchens, Ruel</b>	100 Longhunters Trail	Glasgow, KY. 42141-1244
088	Houck, Wanda	599 Newlin Court	Lawrenceville, GA. 30045-6240
089	Howard, Mrs. John W.	759 W. Country Road 200 S.	Frankfort, IN. 46041-7637
090	Huffman, Ms. Vicki A.	1433 Parnell Dr.	Eugene, OR. 97404-2887
091	Hull, Mrs. Mary G.	518 Fulton St.	Keokuk, IA. 52632-5632
092	Jackson, Terry	75 Beaver Valley Road	Glasgow, KY. 42141-9727
093	Jameson, Dana L.	6246 N. 750 W.	Frankton, IN. 46044-9692
094	<b>Jewell, Jeffrey</b>	905 Broadfields Drive	Louisville, KY. 40207-4341
095	Jobe, James R.	512 Amberwood Way	Kingston, Georgia 30145-2736
096	Jones, Judy Davidson	P.O. Box 237	Tijeras, New Mexico 87059-0237
097	Jones, Mrs. Mary Bridges	108-A Trista Lane	Glasgow, KY. 42141-3481
098	<b>Jones, Robert M.</b>	4411 Lynn Brook Drive	Louisville, KY. 40220-1007
099	Joyce, Brenda	640 Mason St. Apt. 407	San Francisco, CA. 94108-3827
100	<b>Kerley, James</b>	2808 Sparger Road	Durham, NC. 27705-1643



# South Central Kentucky Historical and Genealogical Society

Membership and Life Membership for 2006

101	King, Ricki	950 65th St.	De Moines, IA 50312-1012
102	Kingrey, Leonard	3598 Finney Rd.	Glasgow, Ky. 42141-9646
103	<b>Kinslow, Earl and Alice</b>	3115 Zartman Road	Kokomo, IN. 46902-2977
104	Kinslow, Mrs. Walter E.	727 Southfork Road	Glasgow, KY. 42141-7020
105	Kirves, Mrs. Sue C.	57 Towne Park Drive	Lawrenceville, GA 30044-4663
106	Kline, Sherry L.	410 North Park	Wellington, KA 67152-3550
107	Kugler, Alice Kinslow	Rt. 1 Box 1060	Cross Timbers, MO. 65634-1060
108	Landers, Egie	4953 Edmonton Road	Glasgow, KY. 42141-9595
109	Landon, Kathleen	4-B Holly House, Bunn Dr.	Princeton, NJ 08540-2806
110	<b>Larkin, Pat</b>	HC 67 Box 10	Whiterocks, UT. 84085-9701
111	Laubenstein, Diana	19126 Liggett Street	Northridge, CA. 91324-2719
112	Lawler, Judy	1098 Lonoke Road	Munfordville, KY. 42765-9228
113	<b>Lawson, Clorine J.</b>	180 Scottie Drive	Glasgow, KY. 42141-3552
114	Lemons, George	7508 Yolanda Dr.	Fort Worth, TX. 76112-4417
115	Lewis, Dean H.	PO Box 94	Medanales, NM. 87548-0094
116	Locke, Carl E.	1618 Highway 215	Brighton, MO. 65617-7128
117	Maschmeyer, Suzanne D.	10287 Powderhorn Dr.	Corning, NY. 14830-9437
118	Mayfield, Selma	176 Lecta-Kino Road	Glasgow, KY. 42141-9500
119	McCluskey, Linda Martin	210 Walnut Street	Glasgow, KY 42141-1268
120	McDaniel, Charles R.	4434 Pheasant Ridge Rd.	Roanoke, VA. 24014
121	McDaniel, Mike	202 Tyne Road	Louisville, KY 40207-3444
122	McMechan, Donna	2511 Atchison Ave.	Lawrence, KS. 66047-2621
123	McMillan, Lena Dolores B.	6320 Woolwich Dr.	Arlington, TX. 76001-7856
124	McMillen, Dixie	628 S. Montgomery St.	Starkville, MS. 39759
125	McNeese, Mrs. Merle E.	1420 Blackhawk Circle	Granbury, TX. 76048-6349
126	Mesker, Wendell W.	7013 Old Heady Rd.	Louisville, KY. 40299-5209
127	Millikan, Marilyn	1192 N.W. Cherry Drive	Roseburg, OR. 97470-1819
128	Mizell, David E.	11870 Spruce Haven	St. Louis, MO 63146-4818
129	Moore, J. Douglas	5223 E. Tamblo Drive	Phoenix, AZ. 85044-2330
130	Morris, Lindell A.	2423 Fulton Ave.	Davenport, IA. 52803-3720
131	Mosier, Homer D.	6472 Harding Road	Valley Springs, CA. 95252-9437
132	Moss, Gerald E.	530 Ashley Ct.	Berea, KY. 40403-1286
133	<b>Murrey, Loretta Martin</b>	1313 Dripping Springs Road	Glasgow, KY. 42141-2258
134	<b>Myers, Mrs. Louella K.</b>	8300 N.W. Barry Rd. #217	Kansas City, MO. 64153-1634
135	Nagel, Dorothy	PO Box 964	Starkville, MS 39760-0964
136	Nash, Della Ford	2515 N. W. 26th. St.	Oklahoma City, OK. 73107-2229
137	Nichols, Elmer W.	2240 Sims Drive	Columbus, IN. 47203-2207
138	Norman, Shirley Ann	500 Cleveland Ave.	Glasgow, KY. 42141-1908
139	Nossem, Ruth M.	306-B Paris Harbor Drive	Paris, TN. 38242-4594
140	Novosel, Mr. Don	105 Indie Circle	Glasgow, KY. 42141-3433
141	Nunnally, Robert A.	103 Crosby St.	Georgetown, TX 78628-4948
142	Pace, Janie Harston	5417 Lake Powell Drive	Fort Worth, TX 76137-4339
143	Pace, Leona	5053 Greybull Ave.	Cheyenne, WY. 82009-5243
144	<b>Paris, Marion</b>	12075 Waterford Lane	Carmel, IN 46033-5501
145	Payne, Wilma Jean	12102 Triple Crown Ct.	Louisville, KY. 40243-2904
146	<b>Peden, James E.</b>	5888 Bowling Green Rd.	Glasgow, KY. 42141-9702
147	Pitcock, John R.	7110 Rolling Creek Blvd.	Louisville, KY. 40228-1346
148	Pitts, Jennifer Newman	3101 Oak Springs Dr.	Plano, TX 75025-3975
149	<b>Powell, Tonia Trull</b>	613 Willow St.	Mansfield, TX. 76063-2417
150	Prescott, Betty Barlow	7 La Salle Dr.	Bangor, ME. 04401-2533



# South Central Kentucky Historical and Genealogical Society

## Membership and Life Membership for 2006

151	Ramey, William Lewis	138 Village Circle	Glasgow, KY 42141-3400
152	Renick, Barbara Ann	311 Copa de Oro Drive	Brea, CA. 92823-7018
153	Richey, James H.	9033 T-ville Road	Glasgow, Ky. 42141-7862
154	Richey, Robert R.	3019 Franks Road	Clinton, Ohio 44216-9327
155	Richey, Russel Steven	RR1 Box 43K	Farmer City, IL. 61842-9722
156	<b>Riddle, William R.</b>	429 Arballo Drive	San Francisco, CA. 94132-2162
157	Riherd, Mrs. Shelley T.	77 Steeplechase Rd.	Glasgow, Ky. 42141-9068
158	Rodgers, Annie K.	716 East Main Street	Glasgow, KY. 42141-2734
159	Ruby, Nell E.	9099 West Brass Lake Rd.	Irons, MI 49644-9018
160	<b>Ryback, Mrs. Clarice</b>	1826 Foothill Ave.	Schofield, Wi. 54476-4848
161	Sawyer, Mrs. Noni	37071 Tovey Ave.	Palmdale, CA. 93551-7831
162	Schulak, Ms. Marie E.	10821 SE 241st Pl. Apt. R205	Kent, WA. 98031
163	Schwartz, Ann Voges	7508-36th Avenue	Moline, IL. 61265-8019
164	Shafer, Helen Sue	8 South 27th Street	Richmond, IN. 47374-5808
165	Shaw, Catherine M.	875 Dry Run Road	Beech Creek, PA. 16822-8022
166	<b>Sides, Stanley D.</b>	2014 Beth Drive	Cape Girardeau, MO. 63701-1810
167	Sieli, Shirl Hite	P.O. Box 262214	Littleton, CO. 80163-2214
168	Simmons, Rollin & Mary Ann	3010 Burkesville Rd.	Glasgow, KY 42141-8319
169	Slife, Donald R.	11189 W. Tulane Ave	Littleton, CO. 80127-1005
170	<b>Smith, Randolph N.</b>	P.O. Box 247	Burksville, KY. 42717-0247
171	<b>Smith, Ruby Jones</b>	917 Meadowood Ln.	Bowling Green, KY. 42104-4335
172	Snook, Norvin G.	45529 Calle Ayora	Temecula, CA. 92592-1229
173	Steenbergen, Julian	8402 Zier Road	Yakima, WA. 98908-9238
174	Stone, Irene Dickerson	715 Monroe	Sedgwick, KS. 67135
175	Strader, Mrs. Sarah R.	3623 Harper's Ferry Drive	Stockton, CA. 95219-3656
176	Talbott, Chrystal B.	P.O. Box 6497	Maryville, TN. 37802-6497
177	Taylor, Joe D. & Sandra	399 Cedar Grove Church Road	Glasgow, KY. 42141-8234
178	Templin, Barbara A.	11559 Woodbridge Blvd.	Seminole, FL. 33772-2209
179	<b>Terry, Samuel</b>	705 Leslie Ave.	Glasgow, KY. 42141-2114
180	Thomas, Mrs. Eva M.	1014 S. 24th ST.	Lafayette, IN. 47905-1633
181	Tobin, Charles Robert	1615 Belmont St.	N. Los Vegas, NV. 89030-7263
182	Toole, Patricia R.	6647 Harding St.	Taylor, MI 48180-1829
183	Triplett, Carolyn	9481 W. Co. Rd. 300 S	Dunkirk, IN. 47336-9008
184	Tyler, Nancy Sterling	6031 Lloyd Ct.	Dallas, TX. 75252-2676
185	Vance, Lawrence L.	3740 Scottsville Road	Glasgow, KY. 42141-8212
186	Wade, Carl L.	206 Forrester Rd. Apt. A	Glasgow, KY 42141-1071
187	Wade, Dorothy E.	2096 Burksville Road	Glasgow, KY. 42141-8352
188	Walker, Sandra Bewley	2331 Old Ida Rd.	Sherman, TX 75090-7424
189	Weidner, Dorothy Pendleton	312 Heather Drive	Heyworth IL. 61745-9215
190	West, Ms. Marjory H.	4017 W. Hayward Ave.	Phoenix, AZ. 85051-5749
191	<b>White, John J.</b>	4039 River Cliff Chase	Marietta, GA. 30067-4742
192	Wilkes, Chester P.	11626 Lida Rose	San Antonio, TX. 78216-3016
193	Wills, Mrs. Nancy F.	20617 Parkside Circle	Potomac Falls, VA. 20165-7512
194	<b>Wilsdon, Diane C.</b>	1175 W. Baseline Rd.	Claremont, CA. 91711-2199
195	Wilson, Leight M.	9114 Glover Ln.	Louisville, Ky. 40242-3324
196	Wilson, Taylor	4783 Radio Station Road	Tompkinsville, KY. 42167-8552
197	Wood, Mrs. Ruth Bridges	156 Lohden Road	Glasgow, KY. 42141-3520
198	<b>Wright, Sophia</b>	8506 Gregory Way	Louisville, KY. 40219-5238
199	Young, Wayne	115 Garmon Ave.	Glasgow, KY. 42141-1515
200	<b>Zablatnik, Linda A.</b>	3200 Hickory Stick Road	Oklahoma City, OK. 73120-5501



# South Central Kentucky Historical and Genealogical Society

Membership and Life Membership for 2006

**E-mail addresses listed by the above membership.**

---

001	Alvis, Phyllis	pbalvis@wizard.com
003	Anderson, Susan Renfro	renfrosle@murlin.com
004	Annis, Russell W.	bettyannis@aol.com
007	Bailey, Sue Church	suewue@bellsouth.net
012	Beard, Ken	kbeard@glasgow-ky.com
013	Beatty, David A., PE	dabeatty@bellsouth.net
014	Becker, Julia Drane	jdranebecker@webtv.net
019	Bird, David A.	dave-nina.bird@cox.net
021	Bishop, William Sue	wbishop56@hotmail.com
022	Bittorie, Kay	j-k.bittorie@att.net
024	Bohlin, Joan	joanbohlin@aol.com
028	Bowles, Edward H., Jr.	edbowles@aol.com
031	Brown, Mrs. Gloria J. Wilson	brownmw@bellsouth.net
033	Burgess, Martha R.	marthabe@1world.net
034	Bush, Mrs. Dennis	n.bush@glasgow-ky.com
040	Chambliss, William J.	wcham3@qx.net
043	Christiansen, Mrs. Betty J.	bjnci@worldnet.att.net
044	Clack, Randall Gene	rg@clack.us
045	Clark, Sharon	clarksha@swbell.net
046	Clemons, Marna L.	mlclemons@san.rr.com
047	Cox, Alan Depp	neecox@mail.mntner.net
050	Crabtree, Robert W., Jr.	crabby308@bellsouth.net
053	Daniels, Anita P.	apdaniels1@msn.com
054	Dean, Mr. Lloyd	mapleview@connectup.com
055	Dewey, Geraldine	jdewey@tcinc.net
059	Downing, Susan	downing65@hotmail.com
060	Draper, Norma J.	draper@nctc.com
061	Duvall, Sandra G.	sduvall@glasgow-ky.com
067	Gardner, Willis W.	vakyilwi@execpc.com
068	Garland, Paul Griffith	Griftylaw@aol.com
069	Garrison, Ray H.	rhgarrison@juno.com
070	Gentry, Margie	margiegentry@scrtc.com
071	Gilley, David G.	dave9393il@alltel.net
073	Gorin, Sandi	sgorin@glasgow-ky.com
075	Green, Ray	ray@so-ky.com
076	Griffin, Lorraine M.	lorrainemgriffin@worldnet.att.net
078	Hale, James E., Jr.	itsjim@cfl.rr.com
079	Hamm, Mrs. Jane Turner	clydehamm@bellsouth.net
082	Harrison, Martha Powell	hharrisn@scrtc.com
083	Head, Carolyn B.	CaBaHead@aol.com
086	Hollingsworth, Patricia E.	pat1218@mrctc.com
088	Houck, Wanda	houck-james@hotmail.com
091	Hull, Mrs. Mary G.	maryghul@msn.com
093	Jameson, Dana L.	cjj841@netdirect.net
095	Jobe, James R.	rjobe@mudspring.com
096	Jones, Judy Davidson	queenofzuzax@hotmail.com
099	Joyce, Brenda	icebrenda@yahoo.com
101	King, Ricki	RickiKing@mchsi.com
102	Kingrey, Leonard	lkingrey@scrtc.com



# South Central Kentucky Historical and Genealogical Society

## Membership and Life Membership for 2006

103	Kinslow, Earl and Alice	eandakinslow@aol.com
105	Kirves, Mrs. Sue C.	Kirves@bellsouth.net
107	Kugler, Alice Kinslow	jmbwmb@yahoo.com
112	Lawler, Judy	jlawler@mchsi.com
114	Lemons, George	lemons@charter.net
115	Lewis, Dean H.	deanlewis@cybermesa.com
117	Maschmeyer, Suzanne D.	roots@stny.rr.com
120	McDaniel, Charles R.	candsmcdaniel@cox.net
126	Mesker, Wendell W.	wenmesker@aol.com
127	Millikan, Marilyn	millikan@rosenet.net
128	Mizell, David E.	demizell@sbcglobal.net
129	Moore, J. Douglas	moore@asu.edu
130	Morris, Lindell A.	lamorris@msn.com
132	Moss, Gerald E.	gbmoss@alltel.net
136	Nash, Della Ford	dfordnash@cox.net
141	Nunnally, Robert A.	roberta.nunnally@verison.net
144	Paris, Marion	mparis@indy.rr.com
145	Payne, Wilma Jean	wibbaone@aol.com
147	Pitcock, John R.	jraypit@aol.com
148	Pitts, Jennifer Newman	me@meoz.net
149	Powell, Tonia Trull	tpowell@arlington.net
150	Prescott, Betty Barlow	betbarlow@aol.com
151	Ramey, William Lewis	rameybill@hotmail.com
152	Renick, Barbara Ann	barb@zroots.com
154	Richey, Robert R.	lr7830@aol.com
155	Richey, Russel Steven	SRichey543@aol.com
159	Ruby, Nell E.	mamason@triton.net
161	Sawyer, Mrs. Noni	oldnoni@cs.com
164	Shafer, Helen Sue	suz@globalsite.net
165	Shaw, Catherine M.	cmshaw@csrlink.net
167	Sieli, Shirl Hite	shineon101@aol.com
169	Slife, Donald R.	dslifedonald@aol.com
174	Stone, Irene Dickerson	irenes@southwind.net
176	Talbott, Chrystal B.	cbt70@bellsouth.net
178	Templin, Barbara A.	jtemplil@tampabay.rr.com
180	Thomas, Mrs. Eva M.	eth3626423@aol.com
181	Tobin, Charles Robert	bobcrtvan1@earthlink.net
182	Toole, Patricia R.	toolep@mail.wcresa.k12.mi.us
183	Triplett, Carolyn	ctripl1701@aol.com
184	Tyler, Nancy Sterling	tylertwo@earthlink.net
187	Wade, Dorothy E.	dew@scrtc.com
188	Walker, Sandra Bewley	idareadfarm@yahoo.com
190	West, Ms. Marjory H.	wgraveyardlady@earthlink.com
191	White, John J.	john-jeanne-white@worldnet.att
192	Wilkes, Chester P.	cwilkes@satx.rr.com
195	Wilson, Leight M.	wkudad@aol.com

## South Central Kentucky Historical and Genealogical Society

## Surname Research Index

The following surnames are being researched by members. Match the number with the above E-mail/membership list.

Abner . . . . . 151	Boyd . . . . . 29	Childress . . . . . 39	Denton . . . . . 144
Adwell . . . . . 143	Bradley . . . . . 44	Christmas . . . . . 194	Depp . . . . . 48
Alderson . . . . . 74	Bradshaw . . . . . 63	Church . . . . . 7	Devore . . . . . 119
Alexander . 69, 79, 116	Brady . . . . . 83	Clack . . . . . 44	Dicken . . . . . 79
Allen . . . . . 9, 56, 086	Brandon . . . . . 31	Clark . . . . . 7, 9, 34	Dickens . . . . . 91
Alley . . . . . 3	Bransford . . . . . 148	Clarke . . . . . 189	Dickerson . . 174, 175
Amos . . . . . 192	Branstetter . . . . . 100	Clary . . . . . 93	Dickinson . . . 70, 191
Anderson . 79, 183, 196	Bratcher . . . . . 63	Clayton . . . . . 14, 117	Dickson . . . . . 31
Ashley . . . . . 143	Bridges . . . . .	Claywell . . . . . 155	Dillard . . . . . 147
Ashlock . . . . . 116	. . . . . 30,097, 103, 197	Cleary . . . . . 93	Dilley . . . . . 164
Atterbury . . . . . 198	Brinegar . . . . . 54	Clemens . . . . . 46	Dilliard . . . . . 147
Atwell . . . . . 119	Britt . . . . . 17, 62, 164	Clements . . . . . 34, 46	Dodd . . . . . 14, 117, 159
Austin . . . . . 70	Brittain . . . . . 159	Clemmons . . . . . 46	Dorsey . . . . . 41
Bagby . . . . . 91, 178	Broady . . . . . 91	Clemons . . . . . 46	Dossey . . . . . 41, 114
Bailey . . 149, 164, 169	Brooks . . . . . 1	Clymer . . . . . 4	Dotson . . . . . 12
Baird . . . . . 40	Browning . . . . .	Cobb . . . . . 155	Doyel . . . . . 52, 197
Baker . . . . . 79, 155	. . . . . 31, 42, 79, 129	Coffey . . . . . 93, 132	Doyle . 30, 46, 52, 197
Ball . . . . . 74	Brummall . . . . . 79	Collins . . . . . 91, 091	Drane . . . . . 14
Barbour . . . . . 29, 75	Bryant . . . . . 194	Combs . . . . . 70	Duff . . . . . 45, 184
Barclay . . . . . 116	Buckley . . . . . 17	Compton . . 12, 25, 175	Dunnigan . . . . . 109
Bardin . . . . . 9	Buley . . . . . 188	Cooksey . . . . . 103	Dunnign . . . . . 109
Barlow . . . . . 150	Bullock . . . . . 159	Coombs . . . . . 14	Durham . . . . . 126
Barrons . . . . . 112	Bulls . . . . . 63	Coomer . 132, 132, 196	Dyer . . . . . 196
Barry . . . . . 74	Buly . . . . . 188	Copas . . . . . 130	Earp . . . . . 29
Bartlett . . . . . 70	Bunnell . . . . . 74	Cox . . . . . 26	Eaton . . . . . 180, 190
Bartley . . 26, 131, 138	Burch . . . . . 91	Crabtree 49, 50, 99, 180	Edmunds . . . . . 193
Basham . . . . . 123	Burd . . . . . 192	Craddock . . . . . 74	Edwards . . . 74, 115,
Bass . . . . . 29	Burgess . . . . . 33	Craighead . . . . . 98	116, 125, 136, 164, 192
Beam . . . . . 11	Burks . . . . . 116	Crain . . . . . 176	Elliot . . . . . 74
Beard . . . 12, 136, 143	Burnett . . . . . 79	Crawford . . . . . 70	Elmore . . . . . 94
Beasly . . . . . 109	Burris . . . . . 132	Creech . . . . . 54	Emersons . . . . . 183
Beatty . . . . . 13	Burton . . . . . 79, 192	Crockett . . . . . 116	Emmert . . . . . 95
Beazly . . . . . 109	Bush . 23, 74, 173, 198	Crump . . . . . 29, 112	Emmit . . . . . 149
Bell . . . . . 43	Butler . . . 45, 74, 156	Crumpton . . . . . 60	England . . 83, 89, 149
Bernard . . . . . 136	Calhoun . . . . . 35	Cummingham . . . . . 74	Erwin . . . . . 74
Berry . . . . 7, 39, 175	Carden . . . . . 136	Curry . . . . . 200	Estes . . . . . 9, 37, 186
Bertram . . . . . 164	Cardoza . . . . . 155	Curtice . . . . . 93	Eubank . . . . . 45, 148
Bewley . . . . . 188	Carter . . 86, 117, 122,	Curtis . . . . . 93	Fant . . . . . 81
Bibb . . . . . 84	. . . . 145, 159, 190, 198	Dale . . . . . 7, 68	Faris . . . . . 144
Biles . . . . . 31	Carver . . . . . 184	Dalton . . . . . 79	Farris . . . . . 12, 193
Bird . . . . . 192	Cash . . . . . 131, 143	Daniel . . . . . 125	Farthing . . . . . 32
Birge . . . . 60, 180, 180	Cassort . . . . . 79	Davidson . . . . . 117	Ferguson . . 45, 65, 71
Bishop . . . . 20, 21, 56	Chamberlain . . . . . 39	Davis . . . . . 74	Ferris . . . . . 149
Blakey . . . . . 74, 193	Chambers . . . . . 33	Davison . . . . . 117	Fields . . . . . 54
Borders . . . . . 126	Chandler . . . . . 74	Dean . . . . . 54, 91	Finn . . . . . 167
Botts . . . . . 26, 70	Chapman . . . . . 161	Dearing . . . . . 68	Fishback . . . . . 193
Bowles . . . . . 28, 136	Charlton . . . . . 123	Defevers . . . . . 84	Fishburn . . . . . 14
Bowman . . . . . 1	Cheatham . . . . . 1	Denney . . . . . 79	Fisher 63, 74, 114, 164



# South Central Kentucky Historical and Genealogical Society

Fisk . . . . .	131	Hale . . . . .	78	Hyde . . . . .	167	Love . . . . .	9
Fitzgerald . . . . .	176	Hall . . 31, 83, 143, 152		Isaacs . . . . .	42	Lowe . . . . .	50, 116
Flannery . . . . .	91	Hamilton . . . 044, 132		Isenberg . . . . .	70	Luster . . . . .	13
Flanray . . . . .	91	Hammer . . . . .	159	Jackman . . . . .	133, 159	Lyons . . . . .	70, 103
Flatt . . . . .	7	Harbison . . . . .	150	Jackson . . . . .	149, 155	Mailey . . . . .	6
Flint . . . . .	71	Hardy . . . . .	115, 192	Jaggers . . . . .	198	Malone . . . . .	86
Ford . . 31, 83, 136, 186		Harlow . . . . .	42, 185	James . . . . .	30, 197	Manley . . . . .	182
Foster . . . . .	17, 117	Harper . . . . .	074	Jameson . . . . .	85	Mansfield . . . . .	33, 76
Fowler . . . . .	123	Harrison . . . 23, 27, 63		Jenkins . . . . .	100	Marrs . . . . .	17
Francis . . . . .	126	Harston . . . . .	79, 81	Jett . . . . .	116	Marshall . . . . .	145
Franklin . . 73, 125, 143		Harvey . . . . .	71	Jewell . . . . .	81, 94	Martin . . . . .	
Freeman . . . . .	29, 98	Haskins . . . . .	74	Jobe . . . . .	95	74, 119, 138, 176, 193	
French . . . . .	29	Hatcher . . . . .	9, 74	Johnson . . . . .	111, 137, 159	Mathers . . . . .	68
Friend . . . . .	185	Hatchett . . . . .	9	Jones . . . 12, 42, 79, 89,		Matney . . . . .	22
Frost . . . . .	69	Hawkins . . . . .	32, 159	. 98, 126, 129, 172, 191		Matthews . . . . .	
Furlong . . . . .	21	Hayes . . . . .	44, 111	Jordan . . . . .	41, 193	. 6, 49, 65, 99, 136, 139	
Galloway . . . . .	8	Hayslip . . . . .	148	Keel . . . . .	149	Maxey . . 127, 129, 191	
Gardner . . . . .		Heard . . . . .	79	Keen . . . . .	69, 91	Mayo . . . . .	20
. . . . .	30, 74, 185, 197	Henderson . . . . .	81	Kelley . . . . .	89	McAdams . . . 190, 198	
Garrison . . . . .	69	Hensley . . . . .	34, 137	Kelly . . . . 54, 145, 200		McDonald . . . . .	79
Garth . . . . .	79	Herndon . . . . .	30	Kerley . . . . .	100	McGary . . . . .	173
Gearhart . . . . .	79	Herring . . . . .	44, 111	Key . . . . .	91	McGavock . . . . .	12
Gee . . . . .	129	Hestand . . . . .	131	Kidd . . . . .	137, 176	McGuire . . . . .	175
Gentry . . . . .	70	Hester . . . . .	15	Kidwell . . . . .	79, 136	McKibben . . . . .	3
Gerald . . . . .	89, 176	Hickey . . . . .	79	Kincheloe . . . . .	107	Meads . . . . .	46
Gibbs . . . . .	190	Hide . . . . .	167	King . . 29, 85, 101, 193		Mesker . . . . .	126
Gilley . . . . .	71, 174	Higdon . . . . .	194	Kinnaird . . . . .	132	Miller . . . . .	35
Gilliam . . . . .	149	Hight . . . . .	167	Kinshalo . . . . .	107	Mitchell . . . . .	3, 33
Gillock . . . . .	173	Hill . . . . .	39	Kinslow . . . . .		Mizell . . . . .	172
Gilmore . . . . .	45	Hite . . . . .	167	. . 76, 94, 103, 107, 150		Mocabee . . . . .	54
Glass . . . . .	143, 180	Hodge . . . . .	144	Kirkpatrick . . . . .	129	Moore . . . . 15, 53, 129	
Glover . . . . .	91	Holley . . . . .	123	Lacefield . . . . .	189	Moran . . . . .	165
Gooch . . . . .	74	Holman . . . . .	28, 149	Lafferty . . . . .	74	Moris . . . . .	85
Goodall . . . . .	29	Hood . . . . .	70	Landrum . . . . .		Morris . . . . .	130
Goodman . . . . .		Horton . . . . .	46	. . . . .	30, 74, 184, 197	Morrison . . . . .	143
. . . . .	20, 30, 107, 114	Houchin . . . . .	46, 194	Larimore . . . . .	136	Morrow . . . . .	196
Goodmon . . . . .	114	Houk . . . . .	74	Laswell . . . . .	189	Morton . . . . .	68
Goodnight . . . . .	184	Howard . . . . .	89, 91	Laughery . . . . .	73	Mosier . . . . .	95, 131
Gorin . . 73, 125, 136		Howe . . . . .	116	Lawler . . . . .	91	Moss . . . . .	132, 149
Gowdey . . . . .	29	Huckaby . . . . .	107	Lawrence . . . . .	56, 182	Mullinix . . . . .	1
Grady . . . . .	74	Hudson . . . . .	149	Lawson . . . . .	149	Munday . . . . .	91
Gragar . . . . .	74	Huff . . . . .	4, 13, 29	Leach . . . . .	70, 149	Munford . . . . .	7
Gramlin . . . . .	75	Huffman . . . . .		Lee . . . . .	149, 188	Murley . . . . .	78
Grant . . . . .	125	13, 17, 44, 90, 130, 193		Leeper . . . . .	3	Murphey . . . . .	79
Green . . . . .	22, 75	Hughes . . . . .	126	Levi . . . . .	154	Murrell . . . . .	74
Greer . . . . .	62	Hull . . . . .	91	Lewis . . 21, 60, 117, 175		Myers . . . . .	70
Grider . . . . .	183	Hulsey . . . . .	90	Littrell . . . . .	79	Nabors . . . . .	33
Grogan . . . . .	74	Humphrey . . . 156, 183		Locke . . . . .	116	Nance . . . . .	122, 182
Grubbs . . . . .	31, 173	Hunt . . 37, 133, 173, 193		Logsdon . . 7, 94, 193, 198		Naylor . . . . .	9
Gutneckt . . . . .	184	Hunter . . . . .	112	Long . . . . .	138, 183	Neathery . . . . .	86
Guzzle . . . . .	74	Hurt . . . . .	149	Lorvell . . . . .	70	Nelson . . . . .	22



# South Central Kentucky Historical and Genealogical Society

Nesbit . . . . . 68	Pulliam . . . . . 79	Shirley . . . . . 8	Underwood . . . . 4, 162
Newsom . . . . . 9	Puryear . . . . . 28	Shofner . . . . . 162	Vance . . . . . 185
Newson . . . . . 9	Puyear . . . . . 162	Shores . . . . . 79	Vanhook . . . . . 143
Nichols . . 91, 126, 137	Pyle . . . . . 73	Sibley . . . . . 43	Vaughn . . . . . 74
Norris . . . . . 43	Ragsdale . . . . . 9	Sikes . . . . . 155	Vernon . . . . . 53
Nuckels . . . . . 193	Ralston . . . . . 175	Simmons . . . . . 71	Waddell . . . . . 193
Nunnally . . . . .	Ramey . . . . . 151	Skaggs . . . . . 162	Wade . . . . .
. . . . . 13, 79, 119, 141	Rashall . . . . . 144	Slemmons . . . . . 42	. . . . . 37, 43, 84, 90, 186
O'Bannon . . . . . 32	Ratliff . . . . . 12, 55	Slinker . . . . . 119	Waggener . . . . . 74
O'Neal . . . . . 44	Ready . . . . . 85	Small . . . . . 79	Walker . . . . . 132, 196
Oldham . . . . . 91	Reams . . . . . 193	Smith . . . . . 13, 33, 70,	Wallace . . . . . 175, 189
Oliphant . . . . . 182	Reece . . . . . 71	74, 130, 144, 193, 194	Waller . . . . . 159
Oliver . . . . . 70	Reeves . . . . . 14	Snoddy . . . . . 148	Walthall . . . . . 1
Overfelt . . . . . 74	Reid . . . . . 130	Snowden . . . . . 175	Walton . . . . . 31
Owens . . . 74, 115, 116	Reneau . . . . . 53	Sorrell . . . . . 159	Warren . . . . . 198
Owsley . . . . . 79	Renfro . . . . . 3, 175	Speakman . . . . . 70	Weaver . . . . . 126
Pace . . . . . 143, 164	Renick . . . . . 152, 178	Spearmen . . . . . 1, 8, 91	Webb . . . . . 138, 155
Page . . . . . 74	Rennick . . . . . 129	Spears . . . . . 20	Welborn . . . . . 27
Pare . . . . . 30, 39, 97	Rhea . . . . . 14	Spencer . . . . . 178	Welbourne . . . . . 27
Parker . . . . . 30	Rice . . . . . 85	Spenser . . . . . 91	Welch . . . . . 78
Parrish . . . . . 29, 117	Richey . . . . . 154, 155	Spilman . . . . . 45	Wells . . . . . 30, 74, 172
Paull . . . . . 1	Richmond . . . . . 97, 197	Squires . . . . . 74	West . . . . . 9, 190
Payne . . . . .	Riddle . . . . . 156	Staggs . . . . . 131	Westmorland . . . . 196
. . . . . 15, 107, 123, 133, 145	Rigney . . . . . 74	Stark . . . . . 81	Whitaker . . . . . 125
Peace . . . . . 79	Rigsby . . . . . 167	Starr . . . . . 49	White . . . . . 13, 74,
Peak . . . . . 3, 175	Riherd . . . . . 159	Steenbergen . . . . . 65	79, 129, 183, 191, 193
Peden . . . 33, 139, 164	Ritter . . . . .	Steenburgen . . . . . 173	Whitman . . . . . 152
Pedigo . . . 71, 74, 164	. . . . . 14, 136, 145, 165, 200	Steffey . . . . . 159	Whitney . . . . . 81
Peek . . . . . 3	Roberts . . . . . 9, 57	Stephens . . . . . 189	Wilburn . . . . . 27
Peers . . . . . 29, 131	Robinson . . . . . 89	Stewart . . . . . 93	Wilhelm . . . . . 74
Pell . . . . . 73	Rogers . . . 40, 43, 155	Stinnet . . . . . 117	Wilkerson . . . . . 164, 198
Pemberton . . . . . 57	Rollins . . . . . 126	Stinson . . . . . 31	Williamson . . . . . 42
Pendleton . . . . . 189	Rose . . . . . 149	Stone . . . . . 35	Willis . . . . . 29
Perkins . . 136, 149, 155	Ross . . . . . 79	Stout . . . . . 17, 42, 139	Wilson . . . . . 27, 31,
Petty . . . . . 126, 182	Rowland . . . . . 79	Stovall . . . 79, 136, 175	74, 111, 145, 196, 200
Phares . . . . . 144	Rowsey . . . . . 172	Strange . . . . . 46	Winfrey . . . . . 86
Phelps . . . . . 42	Rucker . . . . . 29	Strode . . . . . 155	Winn . . . . . 28, 109
Phillips . . . . . 1	Runyon . . . . . 164	Sturgeon . . . . . 7, 198	Withers . . . . . 31
Pinkley . . . . . 173	Russell . . . . . 74	Summers . . . . . 91	Witt . . . . . 14
Pitcock . . . . . 70, 147	Rutherford . . . . . 42	Sykes . . . . . 155	Witty . . . . . 149
Planck . . . . . 54	Sanders . . . . . 39	Tapscott . . . . . 161	Wlaters . . . . . 85
Pointer . . . . . 161	Sanderson . . . . . 85	Tate . . . . . 79	Wood . . . . . 40, 93, 114, 188
Ponter . . . . . 6	Schmidt . . . . . 13	Taylor . . . . . 25, 194, 198	Wooldridge . . . . . 1
Pope . . . . . 129	Scholl . . . . . 144	Thaxton . . . . . 69	Workman . . . . . 9
Porter . . . . . 152	Scott . . . . . 74	Thomas . . . . . 54, 167	Wright . . . . . 144
Powell . . . . . 17, 23	Scrimager . . . . . 151	Thomasson . . . . . 147	Wynn . . . . . 54
Poynter . . . . . 76, 123	Sears . . . . . 81	Thomerson . . . . . 147	Wynne . . . . . 109
Preston . . . . . 033	Sego . . . . . 198	Thompson . . . . . 52	Yancy . . . . . 193
Prewitt . . . . . 159	Settles . . . 30, 45, 149, 197	Thurman . . . . . 1, 180	Yates . . . . . 189
Price . . . . . 79, 162	Sexton . . . . . 25	Tibbs . . . . . 153	Young . . . . . 79
Priest . . . . . 85	Sharp . . . . . 164	Tribble . . . . . 33	Zackery . . . . . 196
Proffett . . . . . 70	Shaw . . . . . 85	Trull . . . . . 149	
Proffitt . . . . . 25	Shields . . . . . 167	Turk . . . . . 86	
Puckett . . . . . 127	Shipley . . . . . 99	Turner . . . . . 57, 74, 79, 138	



## South Central Kentucky Historical and Genealogical Society

### Exchange Membership 2006

Adair Co. Gen. Society	P.O. Box 613	Columbia, KY. 42728-0613
Butler Co. Hist. & Gen. Soc.	P.O. Box 435	Morgantown, KY. 42261-0435
Decatur Genealogical Society	P.O. Box 1548	Decatur, IL. 62525-1548
Fort Worth Genealogical Society	P.O. Box 9767	Ft. Worth, TX. 76147-2767
Gene. Society of Central Missouri	P.O. Box 26	Columbia, M.O 65205-0026
Green Co. Historical Society	P.O. Box 276	Greensburg, KY. 42743-0276
Hart Co. Historical Society	P.O. Box 606	Munfordville, KY. 42765-0606
Hoosier Gene. - Indiana Hist. Soc.	450 W. Ohio Street	Indianapolis, IN. 46202-3269
Hopkins County Gene. Society	P.O. Box 51	Madisonville, KY. 42431-0051
Hopkins County Genealogical Soc.	P.O. Box 624	Sulphur Springs, TX. 75482-0624
Kin Hunters, Gene. Publications	P.O. Box 515	Russellville, KY. 42276-0515
Ky. Genealogical Society	P.O. Box 153	Frankfort, KY. 40602-0153
Louisville Genealogical Society	P.O. Box 5164	Louisville, KY. 40255-0164
Macon County Historical Society	4233 Green Grove Road	Lafayette, TN 37083-0231
Metcalf Co. Historical Society	P.O. Box 910	Edmonton, KY. 42129-0910
Muhlenberg Co. Gen. Society	117 S. Main Street	Greenville, KY. 42345-1710
Northumberland Co. Hist. Society	P.O. Box 221	Heathsville, VA. 22473-0221
NSDAR Library	1776 D Street NW	Washington, DC. 20006-5392
Old Buncombe Co. Gene. Society	P.O. Box 2122	Ashville, NC. 28802-2122
Pellissippi Genealogical Society	118 Hicks Street	Clinton, TN. 37716
Southern California Gene. Society	417 Irving Drive	Burbank, CA. 91503-4377
Southern Indiana Gene. Society	P.O. Box 665	New Albany, IN. 47150-0665
Southern Ky Genealogical Society	P.O. Box 1782	Bowling Green, KY. 42102-1782
Southwestern Va. Genealogical Soc.	P.O. Box 12485	Roanoke, VA. 24026-2485
St. Louis Genealogical Society	P.O. Box 43010	St. Lewis, MO. 63143-0010
Surry Co. Genealogical Assoc.	P.O. Box 997	Dodson, NC. 27017-0997
Taylor Co. Historical Society	P.O. Box 14	Campbellsville, KY. 42719-0014
Va-N.C. Piedmont Genealogical Soc.	P.O. Box 2272	Danville, VA. 24541-0272
Watauga Association of Genealogists	P.O. Box 117	Johnson City, TN. 37605-0117
West Central Family Research Assoc.	P.O. Box 1932	Owensboro, KY. 42301-1932
Alva Public Library	504 7th Street	Alva, OK. 73717-2228
Harrodsburg Historical Society	220 South Chiles Street	Harrodsburg, KY. 40330-0316
Simpson Co. Historical Soc., Inc	206 N. College St.	Franklin, KY. 42134-1826
The Fislon Club	1310 South Third St.	Louisville, KY. 40208-2306

### Gift Membership 2006

Glasgow Christian Academy	601 Calvery Drive	Glasgow, Ky. 42141
Austin Tracy School	247 Austin Tracy Road	Lucas, Kentucky 42156-9313
Barren County High School	507 Trojan Trail	Glasgow, Kentucky 42141-2214
Eastern Elementary School	4601 New Salem Road	Glasgow, Kentucky 42141-9422
Glasgow High School	1601 Columbia Ave.	Glasgow, Kentucky 42141-3333
Glasgow Middle School	104 Scottie Dr.	Glasgow, Kentucky 42141-3518
Hiseville School	Cardinal Boulevard	Hiseville, Kentucky 42152
Library of Congress	10 First St. SE	Washington, DC 20540
Mary Wood Weldon Memorial Library	107 West College St.	Glasgow, Kentucky 42141-2423
Park City School	P.O. Box 247	Park City, Kentucky 42160-0247
Red Cross School	215 Parkview Drive	Glasgow, KY. 42141-5005
Temple Hill School	8788 Tompkinsville Road	Glasgow, Kentucky 42141-8824
Robert Harrison	205 West Main St.	Scottsville, KY. 42164-1122
Henry Dickinson	102 Terrace Manor	Glasgow, KY. 42141-2066
Jerry Ream	306 Seay St.	Glasgow, KY. 42141-2044
Jeffrey Foster	124 Trappers Trail	Glasgow, KY. 42141-1248

2006 INDEX – Page 117

"AUNT BETTY"	1	. MARTHA HENLEY	58
"PAP"	1	. MARY	58
ACTON, J W DR	88	. MARY CORBETT	58
ALLEN	52	. MARY FOSTER	58
ALLEN, CHARLES A DR	3, 87	. NEWMAN DR	84
. JOHN	65-66	. ROBERT	58
. N P DR	1	. S	53
ANDERSON, BEULAH	48	. SAM-SAMUEL	56-58
. JOHN	52	. SARAH	52
. WILLIAM	65	. SI	57
ANTHONY, THOMAS REV	94	. SLAVE ALLEN	57
ARNETT, ROBERT	75	. SLAVE CLABORN	57
ARTERBURN, CHARLES R	68	. SLAVE JOE	57
.	102, 104	. SLAVE JUDY	57
. ELIZABETH DOUGLAS	71	. SLAVE KIZZY	57
. ELZIA	71, 104	. SLAVE MARANDA	57
. FRANCIS	103	. SLAVE MARTHA	57
ATCHISON, DR	45	. SLAVE MARY	57
BAGBY, S M	22, 27	. SLAVE MILLY	57
BAILEY, JOHN T	66	. SLAVE PETER	57
BAIRD, J	65	. SLAVE ROWAN	57
. LAURA DAVIDSON	3	. SLAVE SAM	57
BAKER, AMANDA ANN	106	. SLAVE THADDEUS	57
. JOHN H REV	61	. SLAVE WALLACE	57
. NEIL	59	. SLAVE XERILDA	57
BALDING, JOHN	74	. THOMAS	58
BALDWIN, ISAAC DR	84	. WILLIAM-WM	57-58
. JOHN	74	BENNETT	52
BARBER, EDWARD-EDWD	52	BENNETT, ADAM	52
BAREN, ORA ANN	106	. ANN	58
BARKER, JANE PORTER	66	. SALLEY	52
. JOHN	66	BENNINGFIELD, ARLAND	38
. PRUDENCE	66-67	. MARY N	39
BARLOW	52-53	BERRY	19
BARLOW, A-AMBROSE	52	BERRY, ALECIA	103
. JAMES	52-53	. GAYLE	62
BARNES, LILLIAN	17	. SARAH	105
. LINA	17	. THOMPSON	26
BARRON, AMAN	105	BERRYMAN, WM A	65
. SIDNEY	105	BEWLEY	19
BARTLETT, ELIZABETH	106	BIGGERS, CARTER W DR	86
BARTLEY, LYNN	75	. L C	88
BASKERVILLE, C P	54	. MILLARD DR	88
BASS	52	BIRDWELL, "BETTIE	68
BASS, JOHN E DR	87	. ALEXANDER	68
. M	53	. ELIZABETH KATHERINE	68
BAUGH	52	. NANCY CONDRA	68
BAUGH, JOHN	5, 52	BIRGE, LONNIE	75
. WILLIAM	52-53	BISHOP	19, 52
BAXTER, BAZZ	48	BISHOP, SAML	52
. DELLA	48	. WM	52
BEAM	52	BLACK, ELIZA JANE	105
BEAUCHAMP, JOHN W DR	84	. MARGARET	106
BEBEE, CLINTON	3	BLACKFORD, OPAL	54
BELCHER, HERSHEL J	75	BLAIR, M E MRS	48-49
BELL	1, 52, 100	BLAKEMAN, WALTER S DR	87
BELL, ANN BENNETT	58	BLAKEY	52
. CHLOE	55	BLANKENSHIP, CARLOS	75
. ELIZABETH DAVIS	58	. J B	75
. JAMES	58	BOLES, ELEANOR	104
. JOHN	58	. U G	47
. JOSEPH	58	BOLLS, ANDREW T DR	88
. JOSIAH	57-58	BOONE, DANIEL	68-69



2006 INDEX – Page 118

BOTTOMS, LOUISA J	14	. JACKIE NED	47
BOTTS, A T DR	87, 89-90	. JACOB ALEXANDER	58
. LEE DR	89	. KEELEY CIERRA	58
. SAMUEL T DR	87, 89	. LAURA ELIZABETH	58
BOWDRY, SAMUEL P	23	. LAURA LEE	58
BOWLES, ELEANOR	104	. NELLIE	50
. ELIZA	106	. PEARL	50
. JOHN	52	. RANDY	58-59
. NANCY M	104	. THOMAS	50
. WILLIAM G	104	BYBEE, EDWARD PRESTON	14
BOWMAN, A B MRS	48	MARY LETITIA	14
BOYD, EDNA	104, 106	CACCIAGUERRA, PERLA	33
. HARRIET	106	STEFANO	33
. MILL	4	CALDWELL, C LUTHER DR	86
. PERLINA	106	CAMPBELL, IKE	30
. WOODFORD	106	MARY FRANCES	94
BRADLEY	82	CANNON, WILLIAM F	53
BRADLEY, W M REV	94	CARDEN,	
BRANDON, HENRY MRS	48	CHARLES EDWARD DR	86
NINA	48	CARDER, DAVID	105
BRANSTETTER, HARTZEL	48	. ELIZABETH	106
BRANT	19	. EMELINE	105
BRAY, LESSI	75	. JOHN	106
REBECCA	105	. JONATHAN	106
BREADING, EINER DR	89	. MARGARET	106
JAMES A DR	87	. RACHEL	105
BREEDING, JAMES A DR	87	. SARAH	106
BRIDGES, MISS	3	CARTER, CLAUDE PAYNE	75
BRIGGS, DONNA COX	99	. CREED	75
BRIGHT, LOUNETTE M	39	. HENRY	52
BRITT	19	. JANETTE	49
BRITT,		. LESLIE	49
WILLIAM THOMAS DR	88	. MARJORIE	47-49
BROWN, FRED	75	. RAYMOND D	75
. MADELINE	94	. RONNIE	59
. ROBERT LINCOLN	12	. TIM LEE MRS	48-49
BRYAN	100	CARVER	19
BRYAN, EUGENE H DR	88	CAWTHORN, C P	61
BRYANT, OSCAR	48	CECIL, CHERYL	49
BUFORD	52	JOHN	47-48
BULLOCK, THOMAS J DR	87	CHANDLER, CONNIE	14
BURGE, JANE	105	CHAPPELL, JENNIE	48
JOHN	105	CHARTER, JULIA	105
BURGESS	19	CHASE, MARY	106
BURKS, BEN F DR	87	RICHARD	64
. JOHN	53	CHASPELL, FLORENCE MRS	49
. WILLIAM M DR	84	CHILDRESS, AMANDA E	61
BURTON, WILL M	94	. F C REV	61
BUSH	52	. FLEMING REV	61-62
BUSH, JOSIAH	65	. JOHN G	61
. WILLIAM T	57, 74	. JOHN W	62
. WILLIS A	57	. KATE	62
BUSHONG, BLANCHE	49	. MARGARET	61
. JIMMIE	49	. MARTHA L	61
. RONALD MRS	48	. NANCY W GLOVER	61
. W R MRS	49	. RON	62
BUTLER, ANDREW DONOVAN	58	. SPENCER	62
. BILL	58-59	. SUSAN F	61
. DOUG	58	. WILLIAM G	62
. ED	48	. WM S	62
. HARTSEL	50	CHISM, JAMES	105
. ISAAC	48	. JAMES H	75
. JACK	48	. JAMES T	105

2006 INDEX – Page 119

. JOHN R	105	CREEL, JOSEPHINE	81
. MARTHA	104-105	CRENSHAW, B R	64
. NATHAN	105	JOHN	52
. NATHAN B	104	CROCKETT, DAVID	68
. ROBERT	105	CROSS, DREWIE EDWARD	75
. SALLY	106	JAMES	49
. SARAH J E	105	CRUMP	52-53
. STEPHEN	106	CRUMP, B B	57
. WILLIAM	53, 106	B B COL	57
CLACK, HENRY	65	CRUMPTON	19, 52
CLARK, NATHAN	65	CRUTCHER, HENRY	64
CLARKE, GEORGE RODGERS	63	CUMBERLAND, STUART	13
CLARKSON, ELIZABETH	106	CURD, BENJAMIN S	65
. REUBEN G	106	CURL, DUDLEY	67
. WILLIAM H	106	CURRY, G E REV	94
CLARKSTON, JOHN L	106	CURTIS,	
CLAY, HENRY	3, 100	RALPH MATCHETTE	75
CLAYWELL,		DANIEL	52
. MARANDA SCOTT	40	DANIEL, ISABELLE	104
. MARY MARGARET	40	. NACY	104
. WILLIAM	40	. NANCY G	104
CLEMENT, JAMES	52	. SARAH ANN	104
CLEMENTS, ANDREW J DR	86	DANIELS, CLANCY	104
CLEMMONS, DORA	49	DAVIDSON, A S	6
CLEMONS, WALTER	75	. ALBERT	6
WALTER L	75	. ALEXANDER	3-7
CLOYD, HUBBY	48	. ALLEN	5-6
COCHRAN, ANDREW	52	. ANNA	4
DENNIS	52	. BENJAMIN	6-7
COE, HUSTON	48	. ELIJAH	4
COFFELT, CARSON S	75	. HEZEKIAH	4, 6
COLE	52-53	. ISAAC	6
COLE, RICHARD	26	. ISAAC W	65-66
WM H	52	. JACOB ELLIS	6
COLLSEN, HENRY	68	. JAMES	4
REBECKAH	68	. JESSE	6
COLSON, JUNIOR	75	. JOE	7
COMBS, DR	45	. JOHN	4-5
MARGIE	48	. LAURA	3
COMER, HARLIN	47	. MARGARET	4
COMPTON, LUCY	104	. PHILLIP	3
CONDRA, GLENN	75	. THOMPSON	66
NANCY	68	. WILLIAM	3-4, 6
CONNER	19	. WILLIAM B	85
COOK, HUBERT REV	94	DAVIS, ELIZABETH	58
LESLIE L	75	. H G DR	88
COOKSEY, MARSHALL E DR	86	. JOHN	64
CORBETT, MARY	58	DEAN, LLOYD	54
COURTS	52	DECKARD, JESS	48
COURTS, B E	14	PERRY	48
. JOHN	53	DEERING	52
. WILLIAM D	65	DEERING, WILLIS DR	85
COX	52	DELPH, C G DR	88
COX, CHASTAIN	52	. JOHN H DR	85
. J VASHTI MARRS	39	WM G DR	88
. RADFORD	52	DENHAM, ISAAC N	66
CRADDOCK, A	52	JESSIE ALVIS	75
. ARCHER	52	DENTON	2
. R	52	DENTON, CHARLES	1
. ROBT	52	. CHARLIE	3
CRAIG, EARL LAWRENCE	75	. ELIZABETH	1
WM	53	. ELIZABETH DENTON	1
CREAL, JOSEPHINE	81	. THOMAS S	1



2006 INDEX – Page 120

. WILLIAM	1, 65	EUBANK, LEON	48
DEPP, DR	83	. LEOTICA	106
EMMA	62	. MARY ANN	106
DEVINE, DONN	60	. NANCY	104
DICKERSON, BRAD	99	. NANCY ANN	106
. C H	47	. SOPHON MRS	48
. MAHALA	104	. WILLIAM B	104
. NANCY A	106	EVANS, JOHN	64
. T J	65	EVERETT	4
DICKEY, B F	64	EVERETT, JEREMIAH	74
DICKINSON	52	. SAML-SAMUEL	65-74
DICKINSON, THOMAS	74	. WILSON	30
DISHMAN, ROBERT H DR	89	EWELL, BARRY J	75
DODD, LEWIS J	52	FANCHER, JOHN	66
DODDS, CALVERT	52	FARRIS, WM	52
DONAN, DAN'L E DR	86	FAULKNER,	
DONAVAN	52	. MARTHA SUE	66
DORSEY, JOSEPH S DR	88	. ROLLIN THOMAS	68
DOSS, ALFRED	105	FERGUSON, JOSEPH C	75
. MARGARET	105	FIELDING, SARAH	87
. POLLY ANN	105	FIFER, SAM	52
. SARAH	105	FIKE	19
DOUGLAS	22, 27	FISH, H L MRS	48
DOUGLAS, ELIZABETH	27, 71	FISHBACK, PHINA	5
DOWNING, FRED MRS	48	FISHER, J REV	95
. GEORGE	48	FITZGERALD, GEORGE	106
. LEONARD REED	75	. JOHN H	106
. WILLIAM G	75	. QUINCEY	104
DOWNNS	52	. SAMUEL	106
DOWNNS, BURREL	52	FLETCHER, CHARLES	59
DUCKWORTH	52	FLOWERS, JOEL	103
DUKE, ALBERT	64	ROBERT DR	59
FOUNTING	65	FOLLIS, C G DR	89
DUNHAM, ISAAC N	65	FORBES, CHASTINE C DR	85
DURRETT, JESSIE S DR	88	. CHESTAN C DR	85
DUVALL, W H REV	94	. GEN	56-57
. WHEELER H	94	. JAMES	56
. ZACHARIAH	94	. SLAVE HANNAH	56
DeORTA, GARCIA	45	. SLAVE HARRY	56
EATON	19	FORBIS, FELIX GRUNDY	57
EDDINGS, DAVID	62	. LORANZO DOW	57
EDGAR, JOHN	52	. NATHAN WELSKER?	57
EDMUNDS, SCOTT	82	FORD, JIM REV	94
WILLIAM	82	REX	75
EILLISON, EUGENE DR	87	FOSTER, H R	66
EISENHOWER, DWIGHT D	36	. JOHN	82
ELLIS, J L MRS	49	. MARY	58
. JACOB	5	. MARY S	38-39
. SARAH	5	FRANCE, FRANK	94
ELLISON, ENRIQUE DR	88	JOHN REV	94
EMBERTON,		FRANCIS	19
. CANDANCE JILL	49	FRANCIS, WILL MRS	49
. HERMAN MRS	49	FRANK, MARY	12
EMBREE, RICHARD	65	FRANKLIN, JAMES	52
EMMERT, EDGAR R	75	. JOEL	52
ERVIN	75	. JOHNSON	12
ENGLAND, ELISHA	105	. WM W DR	86
. JANE	104	FRAZIER, CARL B	48
. SARAH	105	FREEMAN, ROBER.	26
ENLOE, JOEL	52	FREIDMAN, BARNEY	16
ERWIN, MARY JANE	99	FROEDGE, CHARLES W DR	88
ESTER	52	. DR	30
ESTES, ILA MAE	68	. ROBERT	48

## 2006 INDEX – Page 121

GADBERRY	52-53	. NEWT	3
GALLOWAY, J B	1	. SALLIE SETTLES	3
GANTER, L V DR	86	GRIDER, B C MRS	48
GARDNER, WOODFORD L JR	84	. ELLA	49
GARFIELD	34	. VICTOR	48
GARNETT, ELIZA J	99	GRIFFIN, BURRELL	55
. JOHN	100	. BURRELL BELL	55
. REUBEN B DR	90	. CHLOE BELL	55
. RICHARD	53-85	. JOHN	55
. RICHARD EVERARD	87	. SALLY THROCKMORTON	55
. SALLIE	100	GRIGGS	52
. W E DR	86	GRIMSLEY, ERNEST C	75
. W J	27	GRINESTAFF, PAUL	75
. WILLIAM DR	87	GRINSTEAD, R H DR	3
. WILLIAM SIR	100	ROBERT H DR	85
GARRETT, W J	22	GUM, FRANCES	105
GARRISON, GEO	53	. JAMES G	105
GEORGE	52	. JEHU	105
GARVIN, SAMUEL DR	85	. WILLIAM A	105
GATEWOOD	52	HACKNEY, JAS W DR	86
GATEWOOD, J C	85	HAGAN, L P	48
GEE, CHESTER	75	. REE	48
GERALD, ELEL? F	106	. ROY W	75
. GEORGE F	106	. TOMMIE EAGLE B	75
. QUINCY F	104	HALE, ALICE	47
. SAMUEL F	105	HALL	52
GERALDS, JOHNIE NEWMAN	75	HALL, ED B	75
LYNN	75	. JAMES	22, 27, 52
GILL, PAUL MRS	48	. JOSEPH W DR	85
GILLAND, ROBERT LEE	91	. SHERRI	45
GILLOCK, H P H?	66	HAMILTON, JOHN	53
W G W REV	61	MARY A	105
GIST, BENJAMIN	105	HAMMER, ALDEN	75
SILAS	105	. E V MRS	48
GLOVER, CAMPBELL	65	. LEEDAS HOOVER	75
. NANCY W	61	HARLAN, MAXEY	75
. WILLIAM	61	WILLIAM	48
GOODALL, PETER C	52	HARLIN, LESTER CORTEZ	75
GOODE, CECIL E	84	HARPER, PERNA	49
GOODMAN	19	HARRIS, JEAN	62
GOODMAN, JACOB	52	. PETE MRS	48
GORE	53	. SHERMAN	54
GORIN 12, 30, 41, 90, 100		HARRISON	19, 52
GORIN, FRANKLIN 3, 56, 82		HARRISON, JOSHUA	52
.	84	. M P-MARTHA P	18, 70
. SANDI 19, 45, 70, 81-82		. WM	52
.	102	HARVY, JOHN	52
GOSSETT, TRAVIS	49	HATCHER, EDWARD M DR	85
GRADIA, WILAA DR	87	HAWKINS, ANTHONY	42
GRANT, GEN	100	HAYES, JUDY	49
U S	45	. REX E DR	89
GRAVES, ADDIE	48	. TRAVIS MRS	49
GRAY, FERDINAND D	16	HAYNIE, FRED K REV	94
GREEN, JOHN C DR	84	. JESSIE J	75
RAY	54	. REV	95
GREENUP, JAMES L	104	HAYS, JAMES	65
. JOHN S	105	LYDIA	106
. KITTY	104	HEAD, CLURIE	48
. MARY?	106	HEADRICK, ELIZABETH	105
. NANCY J	105	. JOHN	105
GREER, CORDIA	3	. MARTHA A	105
. JOHN	65	HEDRICK, ANDREW J	105
. LEO	3	. ISAAC	106



2006 INDEX – Page 122

. JOSEPH	105	. JOHN W	40
. MARGARET ANN	106	. JULIA	40
. MARTHA A	105	. MARY E PREWITT	40
. SARAH AMANDA	106	. MARY MARGARET	39-40
HEDRICK, NATHAN	105	. SUSAN	40
HENDERSON, CHEREL	98	. THOMAS	39
HENDRICH	53	. TOMMY	40
HENDRICK	52	HUMPHRIES, ABIJAH	16
HENDRICK, JOSEPH W	52	FARMER	15
HENNING,		HUNT, "BILLYH"	102
WILLIAM WALLER	63	. "PATSY" SIMMONS	103
HESTER, ARMSTEAD	1	. ALECIA BERRY	103
HESTON, CHARLESTON	68	. BILLY	103
HICKMAN, WILLIAM	5	. CATHERINE	103
HICKS	19	. CATHERINE SHIVE	102
HIGGINS, WILLIAM	52	. JOHN	103
HIGH, L D MRS	48	. JONATHAN	103
HILL, S L	47-48	. MARTHA SIMMONS	103
HILMAN, GILLY ANN	105	. WILLIAM G	102
HINDMAN, ROBT	65	HYES, RUTH ELIZABETH	68
HINSTON	52	HYLTON, BETTY JANE	99
HIS, HERMAN	47	ISENBERG, KATHERINE	49
HISLOP	52	M E	75
HODGE, FRANCIS M DR	85	JACKSON, ANDREW	1, 68
W	2	. LELA POWELL	38
HOGG	65	. LELA POWELL JACKSON	38
HOLLAND, AUNT	6-7	. LELA POWELL MARRS	38
. MEREDITH	15	. MARY	104
. SHELVY	48	. RACHEL	68
HOLLINSWORTH, GARLAND	75	. TIMOTHY C	38
HOLLOWAY, JAMES MRS	49	. V	2
HOLMS, ABRAM G DR	86	JACOBS	52
HONEYCUTT,		JEFFRIES, JOSEPH DR	85
JAMES BURTON	87	JENNINGS,	
HOOD, JOSEPH	105	LUVENIA SERRENA	68
VIRGIE ANN	106	JEPSON, J J DR	85-86
HOOFMAN, TEETER	52	JESSON, J J DR	85
HOPPER, CLEON	48	JET, JAMES	52
HORD, THOMAS DR	85	JNO	10
. THOS H DR	85	JOBE, CLEBUS	47
. WM	52	LYDIA	106
HOWARD, C C DR	30, 89	JOHNSON, CARROLL	5
. T C MRS	49	. DAVID	103
HOWE, REV	82	. EMILY YATES	81
HUFFMAN	52	. FRED	47
HUFFMAN, GEORGIA	48	. J N	103
. J T	94	. J R	99-100
. JOHN C	65	. JONATHAN	81
HUGHES, WILLIAM B	106	. JOSEPHINE CREAL	81
HUME, GERTRUDE	49	. JOSEPHINE CREEL	81
HUMES, FLOSSIE	68	. SARAH ANN	105
. LEO LLA "OLLIE"	-	. W A	52
.                 PARSLEY	68	. WILLIAM	81, 105
. MURILE	49	. WILLIAM FRED	75
. WILLIAM "WILLIE"	68	JOHNSTON, BENJAMIN	106
HUMPHREY, ABIJAH	39-40	. CATHARINE	104
. BIGAH	40	. CATHARINE M	105
. CAROLYN	39	. ELIZABETH	104-105
. FRANK WOOLFORD	40	. ELIZABETH M	105
. GEORGE WASHINGTON	40	. GINNY	106
. HELEN	40	. JAMES	104
. JAMES H	40	. JAMES A	105
. JOHN	39-40	. JOHN	104-105

## 2006 INDEX – Page 123

. SARAH	104	KILMON, ARCHIE	75
JONES	19	KINCHLOW, ELIJAH	65
JONES, AMANDA D	37	KING, ALONZO W	14
. ARTHUR LEE	37	. MILLARD S	75
. BOBBY	37	. REUBON O	75
. C D	65	KINGERY	19
. CARL	75	KINGERY, DENNIS	75
. DONALD	36	ELIZABETH	106
. DONALD REED	37	KINSLOW, MARGIE	1
. DONALD V	36	. MRS	3
. GRANDPA	37	. RHODA	105
. JESSIE AGNES	58	. W S	65
. KEITH	38	KIRTLEY, P J	64-66
. LOUISE	38	KONVALINKA, JOHN	40-41
. LYDIA	104	LACKEY, DR	45
. MANNIE B MARRS	39	LAMBERTH, JOHN	66
. MARY	104	LAMBIRTH, JOHN	64
. MEGAN E	36	LAND,	
. MIMI	37	TIMOTHY ELIZABETH	38
. MITCHELL	38	LANE, ELIZABETH	104
. PAUL	38	LEOTICA?	106
. POLLY ANN	105	LANING	52
. REUBEN	75	LASLEY, V C DR	85
. SAMPSON	64	LATIMER, MR	82
. SHERRY	36	LAWLESS	12
. SMITH	66	LAWLESS, B	64
. SOLOMON	37	BENJ L DR	86
. STEVE	38	LAYNE, ELIZA	106
JORDAN, ELMER	75	LAYNE?, MARIAL L	106
. JAMES DR	87	LEACH, JOSEPH	88
. JOHNY DR	88	JOSEPH SHERRELL	87
JOURDAN, W D	84	LEE, CATHARINE	104
WILLIAM S DR	86	. CINTHIA	105
KEAN, CARDER	105	. GEORGE W	104
VASHTIE	105	. JOSEPH	105
KEEN, ABNER	105	. MARY	106
. ARBELL	105	LERNER	34
. ELI	105	LESLIE, JOSEPH H DR	87
. JAMES	105	LEVEL, BENJA	52
. MARY	105	LEVELL	53
. NANCY	105	LEWIS	52-53, 100
. NANCY A	105	LEWIS, CHARLES A	66
. RICHARD	59	. H	52
. RICHARD H	105	. JOHN	65
. SUSAN	105	. LANE	104
KEGAL, EDLY	65	. WILLIAM	64
KEITH, JESSIE J	75	LIGHT, CAROL	103
KELLOW, ANDREW	105	KEITH	103
. JESSE	106	LIKENS, "RENA"	68
. NANCY	105	. BENJAMIN FRANKLIN	68
KELLY, ALMIRA	105	. ELIZABETH KATHERINE	68
. CATHARINE M	105	. FLOSSIE HUMES	68
. ELIZABETH	105	. IDA MAE SMITH	68
. MARY ANN	105	. JAMES JONAS	68
. SALLIE	48	. JOHN FRANKLIN H	68
KEY, BARLOW	34	. JOHN PRESTON	68
. CHRISTINE	35	. LUVENIA SERRENA	68
. CHRISTINE TARRY	34	LINCOLN, ABRAHAM	67
. G B	75	LIVELY, MARK	26
. IRA AMOS	75	LOGAN, JOHN M	57
. J B	34-35	W	57
. RUBY RABON	34	LOWE, MARK	98
. TERRI ELLEN	34	ROBERT	65



## 2006 INDEX – Page 124

LUNDY, CORDELL	75	. LOUNETTE M	39
LUNSFORD, ELIZABETH	106	. LUCY D SIMMONS	39
. MARGARET A	106	. MARY N	39
. MARY	106	. MARY S FOSTER	38-39
. NIMROD	106	. MINNIE B	39
LYKINS,		MARSHALL,	
. ARZELDA "ANGELINE"	67	. GEORGE MERVIN	75
. CLARINDA JANE	67	. TOM	100
. DAVID	68	MARTIN	19, 52-53
. DAVID J	66-67	MARTIN, DOLLY	106
. DAVID JESSE	67	. HUDSON DR	84
. DUDLEY CURL	67	. LORETTA	49
. ELI SAULSBERRY	67	. MALINDA	106
. ELIJAH COUCH	67	. RACHEL	106
. EVALINE	67	. WM N	64
. JONAS	68	MATTHEWS	19
. JOSEPH CARTER	67	MATTHEWS, GEO W	57
. JOSHUA W	67	MAUPIN	52
. LUCINDA	67	MAUPIN, ROBERT D	52
. MARCUS	68	MAURY, LEN-LEONARD H	104
. MARK	68	. LEONARD B	61
. MARTHA SUE	68	. RACHEL	104
. MILTON JOHN	67	. SAM P	21
. NANCY J WILLIAMS	66	. THOMAS G	104
. NANCY JANE WILLIAMS	67	. VIRGINIA A	104
. PETER D	67-68	MAXEY	53
. PETER DIAL	68	MAXEY, NORWOOD	47
. PRUDENCE BARKER	66-67	MAYBERY, ELIAS	105
. REBECKAH COLLSEN	68	. MARGARET	105
. STICK GRAND-DADDY		MAYFIELD	4
.	67, 68	MAYFIELD, THO	53
. WILLIAM	67	MEADOR, GILES	64
. WILLIAM "WILLIE"	68	. SILAS	64
. WILLIAM BRUCE	67	MEADOW, GILES	64
. WILLIAM JUDGE	66	. SILAS	64
. WILLIAM S	68	MEANS, THOS	8
. WILLIAMSON BRUCE	67	MERCER, FORESTER	8
LYONS, ASHER G	16	. HOWARD	8
. EFFIE	16	MERRETT, STEPHEN	8
. JAMES	16	MERRY, OWEN T	8
. MARGARET	16	MESKER	19
MAGGARD, H T	65	MIDDLETON, THOS	9
MAGGORD?, HENRY	65	MILAM, DAVID	35
MAINES, EZRA	47	. JANICE	36
MALORY, JOHN	26	. LAUREN	35-36
MANSCO, JOHN	69	. MR	94
. MARGARET ROBINSON	69	. PAUL	36
. PEGGY ROBINSON	69	. RITA	36
MANSKER	69	. SHEILA	35
MANSKER,		. WINSTON	36
. BENJAMIN PAYNE	69	MILES, JAMES JR	9
. ELIZABETH WHITE	68	MILLER, ABE	48
. JOHN	69	. DAVID	48
. KASPER	68	. DOC MRS	49
. NANCY	69-70	. DR	45
. PEGGY	69	. ELI	9
MARCUM, ANDREW DR	86	. HENRY	9
MARRS, DELMA P	39	. HENRY DR	90
. J VASHTI	39	. ISAAC ABE	48
. JAMES HENRY	38-39	. JAMES	9
. JAMES R	39	. RICHARD	9
. JOHN EDWARD	38	. ROBERT COL	46
. LELA POWELL	38	. THOMAS DR	59

## 2006 INDEX – Page 125

. THOMAS FINLIE DR	89	MURREL, SAMUEL	11
. W TAYLOR	82	MURRELL, GEORGE COL	4
. WILLIAM DR	85	. HEZEKIAH P	11
MILLS, BURR	47	. JAMES-JAS	3-4, 11, 82
. GEORGE W-G W DR	85, 87	. REBECCA	1
MINARD	19	. ROBERT	4
MINTON, WM	9	. SAMUEL	11
MITCHELL, JAMES	9	. SCHUYLER-SCUYLER	3, 4
. JONAS	9	. SCHUYLER H	1
. SAMUEL	9	. WALTER DR	86
MIZELL, DAVID	71	. WILLIAM	7
MONK, WM A	9	MURREY, LORETTA	1
MONROE, BENJ F	10	. LORETTA MARTIN	49
. GEORGE W	9	MUSCHAMP, WM	11
. JAMES	82	MUSGROVE	12
. JAS	9	MUSIC-MUSICKS, THOS	11
. JNO DR	9	MYERS, DAVIS	11
. JOHN	9, 52	. LETCHER	11
. JOHNSON	9	. WM L	11
. LUCY	9	McADAMS, JAMES M	8
. M H	9	McARLAND, DANIEL	8
. MATHEW	9	McCALL, BENJAMIN	8
. MATHEW H	9	. BENJAMIN G	8
. PLEASANT	10	McCANN, TOM	34
. THOMAS B-THOSB	9-10	McCAULEY, DENNIS	8
. WM	10	McCLAIN, JAMES	8
MONTGOMERY, HUGH	10	McCLURE, THOS	8
MOORE, ISAAC	10	McCOMBS, HUGH	8
. JOEL	10	. JNO-JOHN	8
. JOHN	10	McCONNELL, JNO	8
. ROBT	10	. JOHN	8
. T F	54	McCREERY	52
. WILLIAM	10	McCUE	103
MORAN, PRICE P	10	McDANIEL, ASA B	8
MOREHEAD, TURNER	10	. BETSY	23
MORGAN, ANDREW	10	. ELIZABETH	26
. WILLIAM K REV	61	. FLOYD	22, 27
MORRIS, JAMES	10	. JENNINGS	22-23
. RICHARD	10	. JOHN	22, 27
. SAMUEL	10	. MARY	21, 23, 26-27
. THOS	10	. MARY H	22
. WILLIAM REDDING	33	McDANNELL, MATHEW	8
MORRISON, JOHN O-JNO O	10	McELROY, J F DR	45
.	74	McFERRAN	100
. SLEPTO O	10	McFERRAN, W R-WM R	8
MORTON, W G	10	McGEE, ABEL	8
MOSELEY, JNO	10	. HENRY	8
. JOHN	10	McGINNIS, DAVID	8
MOSS	52	. ROBT	8
MOSS, FREDERICK JR	10	. WM	8
MOUSER, GEORGE	10	McGUIRE, ALEXANDER B	8
MOVIC, GEORGE	10	McINTEER, W H	8
MULKEY, JOHN	10	McINTOSH, ANGUS	8
. JONATHAN	10	McKAY, ALEXANDER	8
. PHILIP	11	. WM	8
MUNFORD, BERRY	11	McKEE	100
. RICHARD J	11	McKEY, THOS	8
. WHITNEY	11	McKINNEY, CHARLES	52
MURLEY, HARVEY DENTON	75	McMAHAN, MARTIN	8
MURPHY, JNO	11	McMILLAM, FRANCIS C	8
. JNO JR	11	McMILLIN, RICHARD	75
. JOHN	5	McMURRY, ELIZA J	99
. WILLIAM-WM	11	. SAMUEL	8



## 2006 INDEX – Page 126

McMURTRY, JAMES	8	. TAPOLA	42
WM	8	. WM P	42
McMURY, JOHN	53	OLIPHANT, DANIEL S	42
McPHERSON, AARON	8	OBADIAH	42
ACIE	48	OLIVER, D S	42
McQUE, ALEXANDER	8	ORCHARD, JAMES	42
McQUOWN	83	OVERBEY, JOHN	42
NANCE, ALLEN	11	OVERSTREET	65
NEAGLE, ANDREW	11	. FRANKLIN	42
NEGAL?, EDLY	65	OWEN, CHAS	42
NELL, DORA	11	. I H	58
NELSON, JOHN	11	. JAMES	42
NEVEL, JNO	11	. JOHN	42
NEVIL, JNO	11	. JOHNSON	42
. JOSEPH	11	. JOSEPH	42
. THOS R	11	. MARTIN	42
NEVILL, CARROLL	11	. WEST	42
. JAMES JR	11	. WM	42
. JNO-JOHN	11	. WM D	42
. JNO JR	11	OWENS, BENJAMIN	42
. JOHN SR	11	. E L	42
. THOS R	11	. HENRY DR	46
. WM	11	. JOHN	42
NEVILLE, THOS R	11	. JOHN SR	42
NEWBERRY, LEVI	11	. WILLIAM	42
THOMAS LEVI DR	86	OWSLEY, W T	42
NEWELL	52-53	PACE, WILLIAM J	42
NEWELL, JAMES	12	WM I	42
. THOS R	12	PAGE, ALFRED	105
. WILKINS	12	. BALDWIN W	105
. WM	12	. BETTIE GALE	48
NEWLAND, ISAAC	12	. G B REV	94
NEWLIN, EZEKIEL	12	. GEORGE M DR	84
NEWMAN	53	. J H DR	87
NEWMAN, BELL DR	84	. JACK	75
. BILLINSLEY DR	85	. WESLEY	47
. PRISCILLA	104	PALMORE	47
. WILLIAM O-WM O	12	PALMORE, EWING L DR	89
NEWPORT, CORDELL	47	R E	47
JOHN	48	PARK, JOSEPH	43
NICHOL, JNO	12	PARKER, GEORGE T DR	87
NICHOLLS, JNO	12	. J H	43
NICHOLS, ABNER	12	. JAMES DR	85
. LEROY	12	. JOS	43
. PHILLIP M	12	. SAMUEL	43
. THOS	12	. THOMAS	43
NICKOLS, JEREMIAH	12	. THOS J	43
NOEL, JOHN SR	12	PARRISH, NATH H	43
NONE, DAVID	12	. WILLIAM-WM	43
NOWEL, HUGH	12	PARSLEY, EDMOND THOMAS	75
NUCKLER, ANDREW	12	JOHN J	43
NUCKOLS	100	PASTEUR, LOUIS	35
NUETZMAN, JASON	99	PATEN, ELIZABETH	43
NUNALLY, WILLIS B	12	PATRICK, LEWIS	43
NUNN, LOUIE GOV	81	PATTERSON, J	2
WM	12	PAYNE	19
O'CONNER	19	PAYNE, H A	2
O'POTAMIA, MESS	32	. JOHN	70
OLDHAM, ELIZABETH	54	. MARTIN	104
. GEORGE	54	. NANCY	104
. JAPLIN	42	. NANCY MANSKER	70
. JAS T	42	. RACHEL J	106
. TAPLEY-TARPLEY	42, 54	. VINCENT N	43

2006 INDEX – Page 127

PAYNTER, EDMOND	43	. MARGARET	106
JOHN	43	. MARY ANN	105
PEASE, JERRY A	54	. SAMUEL	105
PECK, JACOB	43	PICKETT, WM	74
PEDEN	103	PIERCE, THOMAS	44
PEDEN, MOSES	43	PILLOW	100
. PHEBE	105	PINCKLEY, W H MRS	48
. THOMPSON	105	PINKLEY, JNO	44
PEDEW, JNO	43	PINTER, BROTHER	1
. MOSES	43	PIPER, JOHN	44
. THOMPSON	43	. ROBERT	44
PEDIGO, HAROLD CORNELL	75	. WILLIAM	44
. HENRY	64	PITCHFORD, DANIEL	44
. JOHN	43	ELI	44
. KATHRYN	33	PITCOCK, BENTON	48
. NICHOLS	43	JIMMIE RUTH	49
. ROBERT	43	PLANT, ELMER	75
. WM	43	PLEASANTS, BENJAMIN F	44
PELER, ABNER	106	F	44
LUCINDA	106	PLUMLEE, R S DR	88
PELHAM, SALLY	53	POE, BENJ	44
THOS	43	. JOHNSTON	44
PEMBERTON, JOHN	43	. WILLIAM	44
PENDLETON, JAMES M	100	POHON, WM	44
PENICK	52	POINTER, JAMES	44
PENICK, JESSE	43	. JNO	44
PENICKS, WM	43	. JOHN JR	44
PENNINGTON, DANIEL	43	POLAND, VIRGIL	75
. JOSHUA	43	POLLARD	52
. RICHARD	43	PONDER, ABBY	37
. SIMON	43	POOL, JOHN	44
PERDEW, JOSEPH	43	POPE, WM	44
PERDUE, JAS	43	PORTER, JANE	66
. NAYSA	43	. L C DR	45
. WM H	43	. ROBERT HENRY DR	88
PERKINS, ANN	43	POTTER, FREDERICK	44
. CALVIN	33	. L W	44
. CHAS	43	. THOMAS	44
. DANNY JO	33	POYNTER, WM	21
. ERNESTINE	33	PRESTON, JNO B	44
. JESSICA	34	JOHN B	44
. JOHN	43	PREWITT, FIELDS	44
. JOSEPH	43	. MARY E	40
. LARRY	33	. WM	44
. MATTHEW	34	PRICE, STERLING	100
. MICAELA	33	PRIEST, DAVIS	44
. MICHAEL JR	34	PROCTOR, JANE	44
. MICHAEL SR	33-34	. NATHAN	44
. MICHELLE	34	. STEPHEN	59
. MISSY	34	PROFFITT, FRED MRS	48
. WILLIAM-WM	44	. OTTIE J	75
PERRY, JAMES	44	. REX	48
THOMPSON C	44	PUCKETT, EPHRAIM-EPHRAM	
PETRIE, CORDIA GREER	3	.	44, 52
H G DR	3	. TIMOTHY	44
PEYTON, E	53	PULHAM, BENJ	44
PHELPS, MORRIS	44	PULLAM, BENJ	45
PHILLIPS, JNO	44	JNO	45
STEPHEN	44	PULLIAM, JNO	45
PHILPOT, JOSE	44	PULLIN, JASIAH	45
JOSEPH	44	PURCELL, SAML T DR	84
PICKENS, JEMIMA	105	SAMUEL T DR	85
. JOHN	105	PURSELEY, WILLIAM	45



2006 INDEX – Page 128

PURSLEY, J W	45	REYNOLDS, JAMES	72
WM	45	. JAS W DR	86
QUESENBERRY, SOLOMON	65	. JONATHAN	72
ZACHEUS	45	. WM	72
QUESSENBERRY, PAGE	45	RHEA, JAMES	72
QUINN, JOHN	45	RHODES, LESLIE REV	94
QUSENBERRY, S	66	WILLIAM D DR	84
RABON, RUBY	34	RHOTEN, CLARENCE	75
RADFORD, C J DR	84	RICE, SAMUEL DR	59
RAGAN, ELIZABETH	71	RICH, LOUIS	75
RAGLAND, DAVID	71	RICHARDS, DR	30
JNO	71	. WILLIAM C DR	88
RAGSDELL, DAVID	71	. WILLIAM CLIFTON	89
RALSTON, ANDREW	71	RICHARDSON	52-53
. JOHN	65	RICHARDSON,	
. MATILDA	71	. BILLIE MITCHELL	47
. THOMAS	65	. WM	72
. WILLIAM-WM	71	RICHEY, FLORENCE	92-94
RAMEY, SAMUEL	71	. JAMES	91, 93
RANDLE, JOSEPH	71	. JOHN	92
RANKIN, JAMES	71	. LESLIE DR	88
RATLIFF, MARGARET	71	. MARY TINSLEY	91
STEPHEN	66, 71	. MAUD	91, 93-94
RATTLE, ALEXANDER	71	. MAUDE	92
RAY, CATHERINE	104	. PRESTON	91, 93
. DANIEL	71	. SAMUEL	72
. JOHN	71	. SARAH	91-93
. MARY	104	RIGDON, FRANCIS M	72
. PHEBE	104	WM	72
. SAMUEL	104	RILEY, JAMES	54
. SAMUEL JR	106	RITTER, BOWMAN	65
. SAMUEL SR	106	DAVID B	66
. THOMAS	72	ROADS, JNO	72
. WYATT	106	ROARK, REUBIN	72
RAYBURN, L R MRS	48-49	. WILLIAM-WM	72
REACE, JNO	72	ROBARDS, JNO	72
READ, JOHN	72	ROBERTS, D	72
REAMS, LESTER	51	JOHN M DR	85
NELLIE	50	ROBERTSON, A J	72
REDMAN, ABRAHAM	72	. JNO	72
JOHN SR	72	. LAURA ANN	72
REED, B G	72	. W W	72
. HORMAN	72	ROBINSON, JNO	72
. NATHAN	72	. MARGARET	69
REEVES, WICK	48	. PEGGY	69
RENFRO, B C	72	. WILLIAM	69
. JOSHUA	65	RODES, WM G	72
. ROBERT A	72	RODGENS, STEPHEN	72
RENFROE, JOHN	72	RODGERS, JNO	73
RENFROW, ISAAC	72	ROE, ANDERSON DR	88
RENICK	52	ROGERS	14, 100
RENICK, H	53	ROGERS, BIRD	73
. HENRY	52	. EDMOND-EDMUND	73
. THOS	72	. ELIZABETH	73
. WILLIAM	72	. GEORGE DR	84
. WM	72	. JESSE	73
. WM (LITTLE)	72	. JNO-JOHN	73
RENNICK, HARRY	72	. JOHN T	73
. HENRY	72	. WILLIAM-WM	52, 73
. JAMES	72	ROSE, LELA	54
. SAMUEL	72	ROSS, LOIS ALLEN MRS	49
. WM	72	ROUNDTREE, DUDLEY-DUDLY	73
REYNOLD, ROBT	72	. NATHANIEL	73

2006 INDEX – Page 129

. SARAH	14	SELCAR, M	53
ROUNTREE, DUDLY	73	. MICHAEL	52
. DUDLY JR	73	SELCER, HARDIN	96
. HENRY	73	SELF, ALLEN	96
. SAMUEL	73	. PRESLEY	96
ROUSEY, THOS	73	SETTLE, THORNTON	96
ROUSSEAU, VIVIAN	3	. WILLIAM	16-17
ROWNTREE, HENRY	52	SETTLES, ISAAC W	65
. MARY	52	. SALLIE	3
. RICHD	52	. WM	96
. SAML	52-53	SHACKLEFORD, ALLEN	96
RUNMAN, BAREFOOT	73	. EDMUND DR	85
RUNYAN, BAREFOOT	73	SHACKLEY, CHARLTON	96
. FRUMAN	73	SHANNON, SAML SR	96
. JOSEPH S	73	. SAMUEL	64, 96
RUSH, BENJ	73	. WM P	96
. JAMES	73	SHARP, MAXWELL	96
. JNO	73	SHAW, NANCY	96
. RAYMOND, MRS	48	. W R	96
RUSSELL, BILL MRS	49	. WM R	96
. BRENDA JANT	49	SHELTON, DAVID	97
. BUCKNER	73	SHERFEY, DANIEL EDWARD	75
. JAMES	73	. MARCUS D JR	75
. JOHN	73	SHERLEY, JOS	97
. JOSEPH	73	SHIKLE, PETER	97
. RAY	75	SHIPLEY, BENJ J DR	86
. WM SR	73	. NATHANIEL	97
SABINE, JOHN	105	. REUBEN	97
. PRISCILLA	104	. ROBT	97
. THOMAS	106	SHIPMAN, DANIEL	97
SALES, SHAWN REV	94	SHIRLEY, ANDERSON	106
SALMON, MARYLYNN	60	. BENJ	97
SAMPLE, MATTHEW	96	. DANIEL	97
. MOSES L	96	. ELIZABETH	106
SAMPLES, ISAAC N	96	. GEORGE	97
SAMPSON, POLLY	96	. HENRY	97
SANDERS	4, 52	. JAMES	97
SANDERS, G W	96	. MOSES	97
. H W	96	. RICHARD	97
. HIRAM	96	. THOS	97
. JAMES	53	. THOS JR	97
. JESSE	74	. WM	97
. MARTIN	96	SHIVE	103
. NELSON	96	SHIVE, CATHERINE	102
. PRESLEY	96	SHIVES, JOSEPH	97
. ROBT J	96	. P A	97
. WILLIAM	96	SHOCKLEY, DAVID	97
SATERFIELD, LEVI D DR	86	. LEMUAL	97
SATTERFIELD, JESEE	96	. SAMUEL	97
SAUNDERS, NELSON A	96	SHOOPMAN, RUSSELL	75
SAVAGE, JAMES W	75	SHORT, FAYE	75
. WILLIAM-WM	52, 96	. JACK MRS	48
SCOTT, HUGH	53	. JOSIAH	97
. JNO-JOHN	65, 96	. JUSEPH	97
. JOSEPH	96	. LANMAN	97
. MARANDA	40	. MOSES	97
. PARKER	59	. SION	52
. THOMAS-THOS	96	SHUFFETT, FRANCIS	97
SCRIMAGER, JOSEPH	96	. JACOB	97
SCRIVENER, J R REV	94	SHUFFITT, F H	97
. JAMES W	96	. T G	97
SCRIVNER, JOHN H	96	SHUFFOLT, JACOB	97
. THOMAS REV	61	SHUSTER, CAROLINE	32-33



2006 INDEX – Page 130

. COLONEL	31	. LEE GUTHRIE	58
. LITIE	32-33	. LUCINDA	104
. MORGAN	32	. MARGARET	105
. PEARL	32	. MARY K	94
. PEARL TRIGG	33	. PATRICIA	55
. W MORGAN	31	. RANDOLPH	58-59
. WILLIAM MORGAN	32	. ROBERT	104
SIDDEN, JAMES	97	. S S DR	86
WILLIAM-WM	97	. SAMUEL KEITH	75
SIDDENS, JAMES	97	. SARAH	106
WILLIAM	97	. THOMAS	105
SIDDONS, WILLIAM	97	. WILLIAM MRS	49
SIDES, HENRY	97	. WINTON	58
JNO	97	SNODDY	14
SIMMONS	19	SNODDY, H M	1
SIMMONS, "PATSY"	103	VIRGINIA	1
. JIMMY	30	SNOW	12
. JOHN G	97	SOUTHER, WM S DR	85
. JOHNSON T	97	SPENCER, SAMUEL GEN	100
. JORDAN	98	SPILLMAN,	
. LUCY D	39	WILLIAM F REV	61
. MARTHA	103	SPRING, EILEEN	60
. ROBERT	30	SPROWL, WILSON	75
. VALENTINE	98	SPROWLS, FRED	48
. VIRGINIA	30	ST CLAIR, ARTHUR	69
SIMONS, JNO	98	STARKS, Y W	94
NANCY	98	STEENBERGEN	19
SIMPSON, MICHAEL	98	STEPHENS, ADA MRS	48
. THOS	98	. CORNELL	48
. WINTON	58	. GEORGE	48
SIMS, HOYT	48	. WILLIE RAY	75
. JOE	48	STEPHENSON, J M DR	59
. OSCAR MRS	49	STEWART, JON	32
SINSLEY, THO	52	STEWART, ALEX	52
SIRY, ARCH	98	STEWART	52
SKAGGS, RICHARD	98	STINSON, JOHN L	52
SKEGGS, FREDERICK	98	STONE, MARY FRANK	12
HENRY	98	SANDERSON	12
SLAUGHTER, THOS K	98	STORY, W L DR	87
SLAYTON, CALLUM H	98	STRANGE, THOMAS	1
SLIMMONS, WASHINGTON	98	STRODE, WILLIAM	47-48
SLINKER, LEWIS	98	SULLIVAN, LAWRENCE	31
WILLIAM-WM	98	SUMMERS, MARY ANN	105
SLONE, ARCHIBALD	98	SUTPHIN, P C DR	13
SLUSHER, JOHN	98	TAFT, WILLIAM HOWARD	32
SMALLING, WILLIAM H	75	TARRANT, CARTER	5
SMITH	19	TARRY, CHRISTINE	34
SMITH, ARTHUR	68	TAYLOR, F J	14
. BEN	47	. F J DR	13
. DUMAS L	75	. F J SR	14
. HIRAM	1, 3	. FANNIE DORA	14
. IDA MAE	68	. FLAVIOUS JOSEPH DR	86
. IDA SHANNON	94	. FLAVIUS	13
. ILA MAE ESTES	68	. HENRY McDONALD	14
. IVY	14	. HORACE L	14
. J P	58	. IDA MAY	14
. JAMES D	65	. J O	47-48
. JESSIE AGNES JONES	58	. JAMES LUTHER	14
. JOE	49	. JOHN WILLIAM	14
. JOHN L	75	. M D DR	88
. JOHN PEYTON	58	. N L DR	45
. JOHN SAM	58	. NANNIE	14
. LAURA LEE BUTLER	58	. ORA	48

2006 INDEX – Page 131

. OTT	48	. OSCAR E	75
TERRY	22, 27	. ROBERT J	104
TERRY, B L	65	. SELBIA	75
. N D	65-66	. WAYNE	75
. RUTHA	27	. WILLA ANN-WILLIANN	105
THOMAS	19	. WILLIAM-WM	104
THOMAS, DR	45	. WILLIS M REV	61
. G W	14	. WYATT	104
. JAMES B DR	84	TWYMAN, SALLIE	99
. MARY ANN	106	WILLIAM	64
. MATILDA	106	UPTGRAVE, FRANCIS	105
. WILLIAM D DR	84	VAEIR, JUDY	34
THOMERSON	19	VAN METER, DR	45
THOMPSON, A S	65	VAUGHAN, MR	46
. MAURICE	75	VAUGHN, JAMES HOWARD	68
. WADDY	65-66	. MAGGIE	34
. WILLIAM	57	. T REV	94
. WOODY	52	VERTREECE, JNO L DR	86
THROCKMORTON, SALLY	55	VERTREES, JOHN DR	86
THURMOND, HL	66	VEST, JAMES O	106
TINSLEY, COLBY	52	WAGGONER, DR	45
. COLEY	52	LESLIE	100
. ISAAC	52	WALDEN, DANE MRS	48
. MARY	91	DAVID MRS	48-49
. THO	52-53	WALKER	52
TOOLEY, CLINT	75	WALKER, HOWARD	75
. DELMAS M	75	WALKIN, DAVID	57
. EARL	48	WALLER, ELBERT	105
. EARL F	74	. JESSE	104
. GLEN	74	. SARAH	104-105
. JAMES DOUGLAS	75	. W E	66
. MACIO	75	WALTHALL	52
. VADA	48	WALTHALL, FRANCIS	52
. WARREN F	75	WARD	103
TRABUE, B F DR	85	WARNELL, N L	61
TRAVIS, LUCILLE	49-50	WEAKLE, EDITH	49
TRIGG, ALANSON	3	WEBB, ELIZABETH	105
. H C	31	. MARY P	105
. LOUISE B DR	88	. STEVE D	34
. PEARL	31, 33	. SUSAN	105
TRIPLETT, CAROLYN	39	. TERRI KEY	34
TUDOR, JOE	47	. THOMAS	105
KANSEL	47	WELCH, HASCAL	75
TUNSTALL	52	WELDON, DR	30
TURNER, ADIN	52	. MARY WOOD	89
. CASWELL C DR	89	. WILLIAM A DR	89
. ELIZABETH	104-105	WELLS, W T DR	87
. ERSKIN D	75	WELSH, GEO W	57
. FANNY	104	WEST, VIRINIA	49
. FONIS C	75	WESTERFIELD, ISAAC	84
. FRANCES	105	WESTMORELAND, CLARENCE	49
. HARRY R MRS	48	WHEAT, ALLIE C	75
. JAMES M	104	BASIL DR	84
. JANE	105	WHEELER, M	65
. JEFFERSON	104	WHEELOCK, JOHN	105
. JOHN A	106	WHITE, ELIZABETH	68
. JOSEPH E	106	. JOHN	1
. JUDY		. JOHN B DR	87
. LEROY	106	. JULIA	48
. LOUISA M	104	. W C C DR	84
. MAHALA	104	. W S C DR	84
. MARTHA	106	. WILLIAM DR	84
. NANCY J	106	WHITSELL, WILLIAM DR	84



2006 INDEX – Page 132

WILBORN, BRANDI	83
WALTER	83
WILKERSON, BATLEY	64
. BATTY	65
. LEWIS	65
WILLIAMS, E R DR 47, 85, 89	
. NANCY J	66
. NANCY JANE	67
. ORVILE	75
. WILLIAM A DR	85
WILLIS, ELIZA M	100
. JOSEPH	99
. THOMAS DR	87
. WILLIAM T	100
WILLIAMS, DOROTHY	48
WILSON	103
WILSON, BETH	50
. JOHN E DR	87
. JOSEPH DR	86
. JOYEL Y DR	86
. WILLIAM	103
WINFREY, MR	46
MRS	46
WINN, B B	52
. BRAXTON B	52
. JESE-JESSE B	57
. THOMAS	52
WISDOM, WM	53
WOOD	19
WOOD, BUFORD	64, 66
. DRUIE	48
. ESCO MRS	48
. THOS G	53
. WM J	64
WOODCOCK	19
WOODS, J D DR	45
. JNO D	47, 86
WOODSON	53
WOODSON, MATTHEW	52
WOOLSEY, JAMES H DR	85
WOOTEN, JOSEPH R DR	87
STEPHEN	106
WOOTTON, JOSEPH R DR	87
WRIGHT, A C DR	45
. FRED L	75
. LEWIS	48
YATES, EMILY	81
YORK, C	47
PAUL S DR	89
YOUNG, E P	48
. EARL	48
. PHILIP V	52
. SAM'L B DR	85

**BOOKS FOR SALE BY THE SOCIETY**

**Barren County Cemeteries:** Ken Beard and Brice T. Leech, Editors. Hardbound. \$25.00 plus \$3.50 shipping and handling.

**Barren County Heritage.** Goode and Gardner, Editors. \$25.00 plus \$3.50 shipping and handling.

**Barrens: The Family Genealogy of the White, Jones, Maxey, Rennick, Pope and Kirkpatrick families, related lines.** Emery H. White. \$11.50.

**Biography of Elder Jacob Locke.** James P. Brooks. \$3.60.

**Goodhope Baptist Church (now Metcalfe Co.), Peden 1838-1872.** \$6.00

**Historic Trip Through Barren County, Ky.** C. Clayton Simmons, hardbound. \$17.50.

**Little Barren (Trammel's Creek) Baptist Church, Mtcalf Co KY, Peden.** \$6.00.

**Mt. Tabor Baptist Church, Committee.** \$11.65.

**Pleasant Run Church, McFarland's Creek, 1827-1844, Peden.** \$6.00.

**Stories of the Early Days, Cyrus Edwards.** Hardbound. \$17.00 plus \$2.00 postage.

**Then And Now, Dr. R. H. Grinstead.** \$2.60.

**Times of Long Ago.** Franklin Gorin. Hardbound. \$12.00. plus \$2.00 postage

**1879 Beers and Lanagan Map of Barren County.** 24x30 laminated cardstock, black and white. Landowners shown, community inserts. \$7.25 plus \$2.75 postage.

I would like to order the following books:

TITLE	COST
_____	_____
_____	_____
_____	_____
_____	_____
_____	_____
Total Cost	\$
Extra S&H if applicable	\$
TOTAL	\$



**MEMBERSHIP APPLICATION**

**New Member (Y) (N)                      Renewal (Y) (N)**

**Name:** \_\_\_\_\_

**Address:** \_\_\_\_\_

\_\_\_\_\_

\_\_\_\_\_

**Names being researched: (Please limit to three)**

- 1.
- 2.
- 3.

**Enclosed is my check/money order in the amount of \$\_\_\_\_\_ for membership in the Society. Dues received before January 31<sup>st</sup> of each year will insure that your name is on the mailing list of "Traces" for the first issue of the year. If received after that date, you will be mailed your current issue and all back issues due you at that time. Please notify us of address changes!**

<b>Regular Membership</b>	<b>\$12.00</b>
<b>Family</b>	<b>\$15.00 (one copy of "Traces")</b>
<b>Life, under age 70</b>	<b>\$150.00</b>
<b>Life, over age 70</b>	<b>\$100.00</b>

**Thank you for your continued support!**

**Mail this application to:**

**South Central Kentucky Historical and Genealogical Society  
Post Office Box 157  
Glasgow, KY 42142-0157**

## GENERAL INFORMATION

**MEMBERSHIP** is open to anyone interested in the history of the South Central Kentucky area, centering around Barren County. Annual dues are \$12.00.

**TRACES**, the Society's quarterly publication is received by all members. It is published seasonally; Spring, Summer, Fall and Winter. Members joining during the year will receive the past issues of that year in a separate mailing.

**CONTRIBUTIONS** are earnestly solicited. Family genealogies, marriages, Bible, will and probate, cemetery, court and other records are all acceptable. You will be listed as the contributor.

**QUERIES** are accepted only from members, without limit, and will be published as space permits. Queries should be limited to about 50 words.

**EXCHANGE** of Traces with other Societies or publications is acceptable and welcome.

**BOOKS** to be reviewed in Traces must be sent with information as to cost, including postage, from whom the book may be obtained. They become the property of the Society library. Books should have Kentucky interest. Reviews will be published as space permits.

**MEETINGS** are held monthly, except December, at the South Central Kentucky Cultural Center (Museum of the Barrens), 200 Water Street, Glasgow, KY, on the fourth Thursday, 7:00 p.m. Interesting and informative programs are planned for each meeting and your supportive attendance is always welcome.

**BACK ISSUES** of Traces are available. Our supplies of the following are gone: Vol. 1, Nos. 1-4 (1973); Nos. 1-4 (1974); Vol. 4. (1976); Vol. 5, No. 1 (1977), Vol. 3, Nos. 1 and 4 (1981); Vol. 10, Nos. 1 and 2 (1982), Vol. 12, No. 2 (1984). All others can be purchased as long as the supply lasts at \$4.00. Back issues will be mailed with our regular quarterly mailing.

**CORRESPONDENCE** of any type that requires a reply must contain a self-addressed, stamped envelope. Address to: South Central Kentucky Historical and Genealogical Society, P. O. Box 157, Glasgow, KY 42142-0157.

**BOOKS AND MATERIALS** of a genealogical nature that you no longer need - would you consider donating them to the Society? They will be preserved for other researchers and are deeply appreciated. Contact the editor, Sandi Gorin, 205 Clements Avenue, Glasgow, KY 42141-3049.



**SOUTH CENTRAL KENTUCKY HISTORICAL  
& GENEALOGICAL SOCIETY  
POST OFFICE BOX 157  
GLASGOW, KY 42142-0157**

**PRESORTED STANDARD  
U. S. POSTAGE PAID  
PERMIT #231  
NON-PROFIT ORGANIZATION**

### TABLE OF CONTENTS

Page 91	The Turkey Dress
Page 94	Loving Springs Baptist Church
Page 94	Hopewell Baptist Church's 123 <sup>rd</sup> Anniversary
Page 95	Singular and Deadly
Page 96	Barren County Land Grants – Sample through Slusher
Page 98	Upcoming Events – Northeast Tennessee Heritage Symposium
Page 99	Progress at Bell's Tavern
Page 99	In memory of Eliza J. Garnett McMurray
Page 102	Editor Speaks at KHS and KGS Meeting
Page 102	Monroe County – Johnson Cemetery – Hunts
Page 103	Bethlehem Methodist Church – Monroe Co
Page 107	2006 Membership and Life Membership
Page 111	E-Mail Addresses for Membership
Page 113	Surnames Being Researched by Membership
Page 116	Exchange Memberships
Page 116	Gift Memberships
Page 117	2006 Index

Books For Sale By the Society  
Membership Application