

8-1992

Kentucky Warbler (Vol. 68, no. 3)

Kentucky Library Research Collections
Western Kentucky University, spcol@wku.edu

Follow this and additional works at: http://digitalcommons.wku.edu/ky_warbler



Part of the [Ornithology Commons](#)

Recommended Citation

Kentucky Library Research Collections, "Kentucky Warbler (Vol. 68, no. 3)" (1992). *Kentucky Warbler*. Paper 264.
http://digitalcommons.wku.edu/ky_warbler/264

This Newsletter is brought to you for free and open access by TopSCHOLAR®. It has been accepted for inclusion in Kentucky Warbler by an authorized administrator of TopSCHOLAR®. For more information, please contact topscholar@wku.edu.

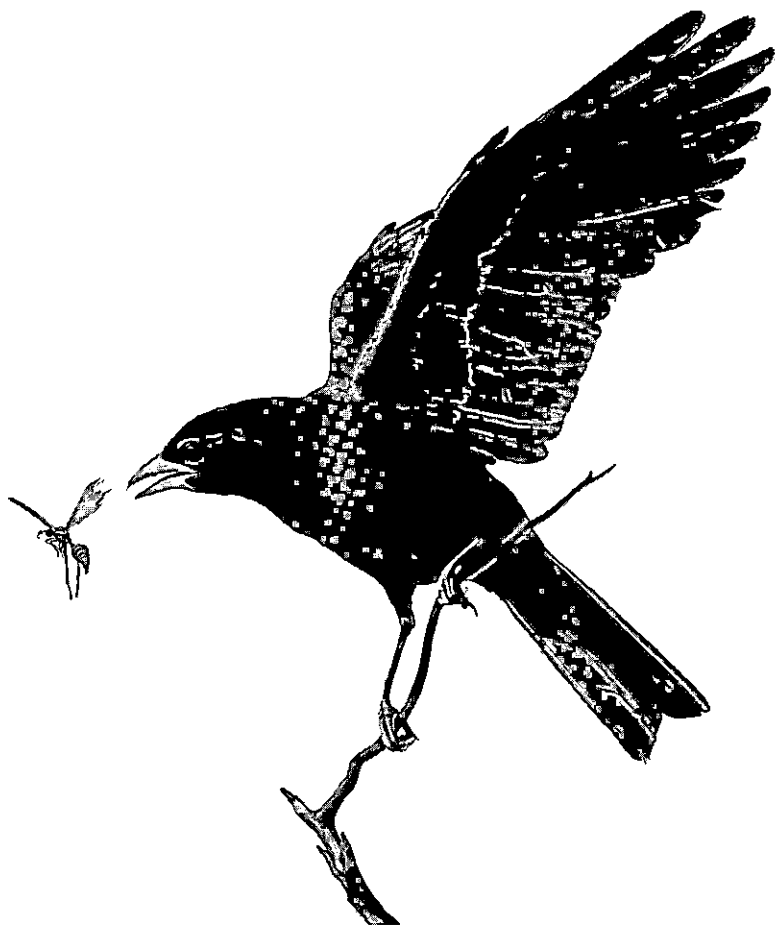
The Kentucky Warbler

(Published by the Kentucky Ornithological Society)

VOL. 68

AUGUST, 1992

NO. 3



IN THIS ISSUE

THE SPRING SEASON, 1992, Anne L. Stamm and Burt L. Monroe, Jr.	43
THE KENTUCKY BALD EAGLE COUNT FOR 1992, James Durell and David Yancy .	49
FIELD NOTES	53
NEWS AND VIEWS	54

THE KENTUCKY ORNITHOLOGICAL SOCIETY

Founded in 1923 by B. C. Bacon, L. Otley Pindar and Gordon Wilson

President	Lee McNeely, Burlington
Vice-President	Fred Busroe, Morehead
Corr. Sec.-Treasurer	Dona Coates 1600 Louisville Rd., Cox's Creek, Kentucky 40013
Recording Secretary	C. Michael Stinson, Louisville
Councillors	
Dennis Sandlin, Hazard	1990-1992
Thomas Stevenson, Stanley	1990-1992
Herbert Clay, Louisville	1991-1993
Arthur Ricketts, Berea	1991-1993
Retiring President	Virginia Kingsolver, Carlisle
Curator	Burt L. Monroe, Jr., Louisville
Staff Artist	Ray Harm

THE KENTUCKY WARBLER

Organ of the *Kentucky Ornithological Society*, published quarterly in February, May, August and November. The *KENTUCKY WARBLER* is sent to all members not in arrears for dues. Membership dues are: Active or Regular, \$8.00; Contributing, \$15.00; Student, \$4.00; Life, \$100.00; Family, \$2.00 in addition to Regular, Contributing, or Life Membership dues; Corporate. All articles and communications should be addressed to the editor. Subscriptions, memberships and requests for back issues should be sent to the treasurer.

Editor	B. R. Ferrell, Biology Department, Western Kentucky Univ. Bowling Green 42101
Assistant Editor	Herbert E. Shadowen, Bowling Green

Editorial Advisory Board

Anne L. (Mrs. F. W.) Stamm	Burt L. Monroe, Jr.
Secretary, Kentucky Bird Records Committee	Burt L. Monroe, Jr. P. O. Box 23447, Anchorage 40223

THE COVER

We thank Ray Harm, our staff artist, for this excellent painting of a Summer Tanager (*Piranga rubra*).

THE SPRING SEASON, 1992

ANNE L. STAMM AND BURT L. MONROE, JR.

This was an unusually warm spring. In the Louisville area the temperature for March and April averaged out above normal, while in the month of May it was below normal. On March 2 the temperature at Paducah was 77 degrees and broke the record. Precipitation in Louisville for the month of March was above normal while in April and May the rainfall was below normal. This weather pattern prevailed, for the most part, fairly constant throughout the state.

Migration began early. The majority of the ducks had moved north by the first of March. In northern and eastern Kentucky, migration was uneventful. Movements of birds were noticed particularly in late March, April 8-10, May 2, and May 9.

Abbreviations — BWMA = Ballard Waterfowl Management Area, Ballard County; BNP = Beargrass Creek Nature Preserve, Louisville, Jefferson County; BBC = Beckham Bird Club; BPS = Big Pond Sanctuary, Grayson County; Bon = northern part of Reelfoot Lake Refuge, south of Bondurant, Fulton County; CRL = Cave Run Lake, Rowan County; Dan = Danville area, Boyle and Mercer Counties; DD = Dix Dam, Mercer County; KOS = Kentucky Ornithological Society; L#9 = Lake #9, Fulton County; LBL = Land Between the Lakes, Trigg/Lyon counties; LPew = Lake Pewee, Hopkins County; Lei = Leitchfield, Grayson County; McA = McAlpine Dam, Falls of the Ohio, Louisville, Jefferson County; MCNP = Mammoth Cave National Park, Edmonson County; MCFH = Minor E. Clark Fish Hatchery, Rowan County; NBSP = Natural Bridge State Park, Powell County; Pul = Pulaski County Park; SWMA = Sauerheber Wildlife Management Area, Henderson County; ShI = Shippingport Island, Louisville, Jefferson County.

Loons through Cormorants — A single Common Loon was noted at LPew, March 17 (JH), four were there on March 28 (LR, KC), small numbers (1-3) were scattered thereafter from Barkley and Kentucky dams (BM, MM, CMS) to Waitsboro Recreational Area, Pulaski County and Pul (JEL), with the latest (2 birds, 1 basic plumage, 1 alternate plumage) at Kentucky Dam, May 26 and 27 (BM, MM, CMS). As expected, small numbers of Pied-billed Grebes appeared in March with the earliest (2 birds) at LPew, March 6 (JH); eight at Owsley Fork Lake, Madison County, March 16 (DCh); four at Bon, April 10 (CP); and one at Madisonville City Lake #4, Hopkins County, April 12 (JH). One Horned Grebe was reported at DD, March 28-April 6 (FL), and five at CRL, March 29 (FB). A *Western Grebe*, an extremely rare visitant here, was reported at Green River Lake near the marina, Taylor County, March 1 (JEL, CMS, m.ob.), March 5 (DCh) and March 8 (BBC, KC). Fair flocks of Double-crested Cormorants began appearing in Kentucky in March: about 300 noted at Bon, March 28 (CP) and 100 in Ballard County (CP), 21 at ShI, April 15 (LR), six at Lake Barkley, Trigg County, April 15 (CP), and four at DD, April 28 (FL, WK); May records included 50 birds in the vicinity of Hamlin, Calloway County (CP), flock of 29 in flight over I-24 NE of Cadiz, Trigg County (BM, MM), eight at Swan Pond, Ballard County (CP), 10+ at Barkley Dam and one at Kentucky Dam, May 3 (BM, MM), and four birds at Kentucky Dam, May 3 and 10 (BM, MM, CMS).

Hérons — The Great Blue heronry in New Concord, Calloway County was "thriving" (CP), good numbers were noted in far western Kentucky (CP), as many as 30 were at MCFH, March 11 (FB) and one to two birds were observed in Barren, Hardin, Hopkins, Grayson and McLean counties. A single Great Egret was first noted at MCFH on March 10, with up to five on May 2 (FB); seven at Bon, April 4 (CP), and by May 2 more were scattered with four birds at Bon (BM, MM), three at L#9 (BM, MM), and five were at Thurston's Pond, Wayne County (JEL); 15+ were present at L#9, May 9 (BM, MM,

CMS); 25 were in the vicinity of Swan Pond, Ballard County, May 15 (CP); and eight were at SHI, May 15 (LR). First observation of Snowy Egret (one bird) was at L#9, May 9 (BM, MM, CMS); four were observed at Swan Pond, Ballard County, May 15 and 23 (CP); and 1 at MCFH on May 27 (Mike Hearn) and May 30 (LK, FB) was the first for this area. Little Blue Herons were present at Bon (six birds) on April 4 and tied our state early record (CP); 40 were noted in Ballard County, April 10 (CP); one adult was unexpected at Lentz's Pond, Louisville, April 27 (BM); five birds were in flight at Bon, May 2 (BM, MM); and 32 (four white, first-year birds, and 28 adults) at Swan Pond and BWMA, May 23 (CP). Interesting was the flock of 100+ Cattle Egrets feeding on a farm with cattle in Boyle County, May 3 (B. G. Tucker, *vide* FL); the species first appeared in small flocks in Calloway County in late April and early May (CP); five were noted in Hickman County near Highway 51, May 2 (KC); 91 were observed south of Barlow and 16 were near Barlow, Ballard County, on May 12 and 15, respectively (CP). Single Green-backed Herons were reported for the most part and by few observers, except for MCFH; earliest observation there was five on April 12, with the average number of 25 birds per trip since then. Eighty-five Black-crowned Night-Herons had reached SHI by March 25, where they have nested previously (LR); single birds were noted at two locations in Boone County on May 8 and 9 (LMc, JC, KCa, TS) and at MCFH, May 6 and 30 (FB).

Waterfowl — Five Snow Geese were still noted flying over Madisonville, Hopkins County, March 3 (D. W. Hancock, *vide* JH). The majority of wintering ducks had moved out by March 1 due to the mild winter. Few sizeable flocks were noted. A flock of 31 Green-winged Teal was present at SWMA (LR, KC) and 25 at Bon (CP), March 28, whereas about 200 Blue-winged Teal were at Bon, March 28 and April 10 (CP); in addition, a pair of Green-winged was at MCFH, March 11 (FB), and from one to 32 Blue-winged Teal were found at six locations. Four Am. Black Ducks were at MCFH, March 27 (FB). Fifteen N. Shovelers were at Waitsboro Recreational Area, Pulaski County, April 4 (JEL); on March 28, a flock of 95 was the high count at SWMA and about 60 were at Bon (CP). A count of 92 Redheads was a high number, observed on a pond on Highway 42 at Prospect, April 5 (FM). Ring-necked Ducks were present at the Middletown quarry, Jefferson County, from March 2-April 3, with a high count of 102 on the latter date (BM); 18 were at MCFH, March 11 (FB); and 29 were on a pond in Somerset, Pulaski County, March 19 (JEL). A female Greater Scaup was noted at Camp Ernst Lake, near Burlington, Boone County, March 19 (LMc). Forty-five Lesser Scaups were present in the Ohio River basin, March 3 (LR); 15 at Towhead Island, March 14 (BM); 51 at DD, April 4 (WK *vide* FL); and one to four birds at Middletown quarry, Barkley Dam, Kentucky Dam, April 11-May 10 (BM, MM, and with CMS on latter date). Ten Common Goldeneyes were still present at LPew, March 28 (LR, KC). Flocks of up to 25 Bufflehead were at CRL on March 28 and MCFH, March 11-April 12 (FB); a pair was observed at Barkley Dam, May 2 (BM, MM). At MCFH and CRL, three to five Hooded Mergansers were seen each trip in March and April, these numbers were slightly below normal (FB); two were noted at MCNP, March 2, and at Kentucky Lake, April 18 (JB, PB); and a pair was at Kentucky Dam, May 3 (BM, MM). Red-breasted Mergansers were found at five locations, with the latest at Kentucky Dam, May 9 (BM, MM, CMS). The largest concentration of Ruddy Ducks was 72 at LPew, March 28 (LR, KC).

Hawks — Few Black Vultures were reported: one to five birds were noted in Grayson, Jefferson and Powell counties during March and April, although normal numbers (up to 18) were noted at MCFH in May (FB). A flock of 30 Turkey Vultures was migrating north, near Owsley Fork Lake, Madison County, March 16 (DCh). There were fourteen reports of Ospreys: two near a transient pond between U.S. 51 and Swan Pond, Ballard County, April 10 (CP); two at Lake Barkley, north of U.S. 68, Trigg County, April 10 (CP); one at Blotz Lake, Grant County, April 13 (KP); one feeding at Beaver Lake, Anderson County, April 13 (KP); one flying over Science Hill, Pulaski County, April 18

(JEL); four at LBL, April 18 (JB, PB); one fishing above the dam at Herrington Lake, Mercer County; April 20 (KP); one in Boyle County, May 1 (FL, WK, MM); one at Deatsville, Nelson County, May 6 (BM, CMS); and five reports of singles from MCFH between March 27 and May 6, except for three on April 12 (FB). There were three reports of Mississippi Kites on May 2, one in Hickman County, near Highway 58 (HC, KC), one in the vicinity of Kentucky Dam (BM, MM), and one at Bon (BM, MM); nine were present on BWMA, May 27 (BM, MM, CMS). Up to three Bald Eagles were present at MCFH between March 7 and March 21 (FB); an immature was observed near the Greenwood boat dock on the Ohio River in southwestern Jefferson County, March 17 (DS); and there were several sightings of two adults in Ballard County during May (CP). N. Harriers were not as numerous this year as in 1989: single females were seen in Grayson County at two locations in mid-March (KC); one female was noted in Muhlenberg County, March 28 (LR, KC); and a male flying over Boyle Knobs, Boyle County, May 14, was late for that general area (FL). There were a few sightings of Cooper's Hawks from March 17 to May 15. The following Red-shouldered Hawks were reported: two at Caperton's Swamp, Louisville, April 5 (FM); one at MCNP, April 8 (PB, JB); two at Green River Wildlife Management Area, Adair County, March 1 (JEL); one near Smiths Grove Church, SW of Caneyville, Grayson County, May 10 (AW); two separate birds in Casey County, May 14 (FL, WK), and one a few days later at the edge of Danville, Boyle County, where the species is "unbelievably rare" (WK, *vide* FL); and a pair noted throughout the period in Anchorage, Jefferson County, where the species regularly breeds (BM, MM). No large movements of Broad-winged Hawks were reported; one to two were noted in five counties, April 18 to May 3. A Rough-legged Hawk was fairly late in Dan, April 4 (WK, *vide* FL). A Golden Eagle was seen at Bon, March 28 (CP). Peregrine Falcons have been seen more frequently, and we had reports of three individuals: one on the Kennedy Bridge, Louisville, Jefferson County, March 14 and 17 and April 21 and 29 (BM, CMS); a juvenile perched along I-24 near Hopson, Caldwell County, May 3 (BM, MM); and one at SWMA, April 26 (LMc, DC, JC, KCa).

Wild Turkeys through Cranes — There were several sightings of Wild Turkeys in Boone County during the period (LMc), two sightings of single birds at MCNP, April 20 and 25 (JB, PB), and one in Ohio County, May 26 (BM, MM, CMS). No large numbers of Soras were found, but three were seen at East Bend Power Plant, Boone County, May 8 (LMc); two were noted in Ohio County (BM, MM, CMS), one near Bon (BM, MM, CMS), and one at the gravel pit at Belleview, Boone County (LMc, JC, KCa, TS), all on May 9. Am. Coots were evident at LPew, where 177 were counted on March 17 (JH); 52 were noted at Lake Linville, Rockcastle County, March 18 (DCh). Sandhill Cranes were migrating March 1-8, with the highest number (150) over BPS, March 5 (KC); 40+ over Middletown, Jefferson County, March 8 was the next largest group (Rose Monroe, *vide* BM); 30+ in eastern Hardin County, March 1 (CMS); and smaller groups were seen at two other locations.

Shorebirds — Shorebird habitat was limited this spring since low-lying fields, ditches and puddles dried up quickly; although numbers on the whole were low, 17 species were reported. The only Black-bellied Plovers were seven birds in the vicinity of Swan Pond, Ballard County, May 15 (CP). No Lesser Golden-Plovers were reported. Semipalmated Plovers (1-3) were recorded at Almo Heights, Calloway County, April 22 and 23 (CP); 10+ at Bon, May 2 (BM, MM); and up to 14 at MCFH, May 4-31 (FB). Up to five Greater Yellowlegs were noted on four occasions between March 21 and May 30 at MCFH (FB); about 50 were at Bon, March 28 (CP), 17 at SWMA, April 11 (LR, KC), and one to five at four other locations. Some 50 Lesser Yellowlegs were at Bon, March 28 (CP); 8 on both April 10 and May 2 at MCFH (FB); and about 110 at SWMA, April 11 (LR, KC). Solitary Sandpipers were reported from nine locations in low numbers, with 15 as the highest count in Hart County, April 25 (MS, SK); 10+ were at Bon,

May 2 (BM, MM). Four Willets were seen in Calloway County, April 26 (CP). One to four Spotted Sandpipers were found at four locations, April 19 to May 7 (FM, JB, PB, BM, MM). A Ruddy Turnstone was reported from MCFH, May 28 (CMS). Semipalmated Sandpipers and Least Sandpipers were reported from only four areas, with 25+ of the former and 20+ of the latter present at Bon, May 2; highest counts of Semipalmated were 58 on May 30 and 63 on May 31 at MCFH (FB). Six White-rumped Sandpipers were at Bon, May 2 (BM, MM); at MCFH, five were noted on May 28 (CMS), three on May 30 (FB), and seven on May 31 (FB). Two Baird's Sandpipers were at Bon, May 2 (BM, MM), and one was observed at MCFH, May 17 (FB). A flock of about 100 Pectoral Sandpipers was the highest count this spring at Bon, March 28 (CP); 50+ at Bon, May 2, was the next highest number (BM, MM); and other reports were 37 at SWMA, April 11 (LR, KC), 20 in Ballard County, April 10 (CP); and several others of six or fewer individuals in Calloway County (CP). Quite unusual was a sizeable flock of about 80 Dunlin on March 28 at Bon (CP), apparently the next to largest spring number recorded; some 20 remained until April 4 (CP). A single Stilt Sandpiper reached SWMA by April 11 (LR, KC). Small numbers of Dunlin, Stilt Sandpipers and Short-billed Dowitchers were present at SWMA, April 26 (LMc, *et al.*). A single Dunlin was seen at MCFH, March 21 (FB). In a flock of 40 dowitchers, 28 were identified as Short-billed by the breeding plumage and/or call note, at Bon, May 25 (CP). Am. Woodcock was first sighted in Barren County in early March (RS) and Grayson County on March 5 (AW).

Gulls and Terns — An adult Laughing Gull was present at Kentucky Dam, May 26 (BM, MM, CMS). Bonaparte's Gulls were fairly numerous at Fishing Creek Recreational Area, Pulaski County, with 80+ present, March 3 (JEl), and at MCFH between March 11 and April 12, with about 60 present on the latter date (FB); and last recorded below Kentucky Dam with two adults and one immature, May 3 (BM, MM). Up to 18 Ring-billed Gulls were at MCFH between March 11 and May 25 (FB); one was at LPew, March 17 (JH); and 112 were counted on the wall below McA, March 19 (LR). One Herring Gull was noted at MCFH, March 27 (FB). One Caspian Tern was at MCFH on April 12, with seven on May 15 and three on May 28 (FB); two were below McA, April 19 (LR); one at Barkley Dam, May 2 and 3 (BM, MM); one at East Bend Power Plant, Boone County, May 8 (LMc, JC KCa, TS); and last reported with five in Ballard County, May 15 (CP). Common Terns were scarce with only two reports of single birds at Barkley and Kentucky dams (BM, MM). There were 27 Forster's Terns at MCFH on May 2 and one the following day (FB); 10+ at Barkley Dam, May 2, and 25+ the following day (BM, MM); and 10+ at Kentucky Dam, May 9 (BM, MM, CMS). Six Least Terns were in Hickman harbor, Fulton County, May 15 (CMS); eight were in Ballard County, May 23 (CP); and two were near Hickman, May 27 (BM, MM, CMS).

Cuckoos through Flycatchers — Yellow-billed Cuckoos were late in arriving and were scarce. Great Horned Owls were reported from five locations in four counties during March and April. Five Short-eared Owls were seen near Wysox Lake, Ohio County, March 28 (KC, LR). Three Common Nighthawks arrived early at Lei, March 21, and established an early date for Kentucky (AW). Chuck-will's-widow was first heard at Hanson, Hopkins County, April 10, which is fairly early (Bonnie West *vide* JH). A Whip-poor-will was heard as early as March 17 at Lei (AW); others arrived on April 7 at Hanson and Madisonville (JH). Chimney Swifts were first noted at Louisville, April 9 (CMS), recorded at Morehead, Rowan County, April 13 (FB), and reported as "numerous" in Prospect, Jefferson County, April 15 (FM). A male Ruby-throated Hummingbird returned to BPS, April 8, with three males and a female present by April 23 (KC). An Olive-sided Flycatcher was reported at Kentucky Dam, Marshall County, May 9 (BM, MM, CMS); another was near Hailwell, Hickman County, May 15 (CMS). Two calling Yellow-bellied Flycatchers were at BNP, May 25 (CMS). An Alder Flycatcher was seen

and heard in western Hickman County, May 15 (CMS). A Willow Flycatcher was first heard at Elk Creek, Hopkins County, May 13 (JH), at MCFH, May 14 (FB), near Perryville, Boyle County, May 18 and 23 (FL, WK), and near Petersburg, Boone County, May 25 (LMc); one heard in Casey County was unexpected, June 1 (WK, *vide* FL). There was some movement noted of the E. Phoebe at MCNP on March 2, when eight were recorded (JB, PB); there were more in central Kentucky this year than usual (FL). An E. Kingbird was first reported on April 12 at MCFH (FB). A *Scissor-tailed Flycatcher* was found by Bernie McCloud in the Grayson Lake Dam area, Carter County, where it remained from April 27-30; it was seen and photographed by many observers, constituting the first record for this region (FB, CMS).

Swallows through Wrens — Three Purple Martins had arrived at nesting boxes in Lei by March 1, 25+ there by April 16, and 50 on April 29 (AW). Two Tree Swallows reached Green River WMA, Adair County, March 1, but no sizeable concentrations were noted there (JEL); at MCFH, about 150 were present on March 27 and April 18, 75 on April 12, above normal numbers for this area. A single N. Rough-winged Swallow appeared at Pul, March 22, and tied our 1989 record at the same site (JEL). Bank Swallows were migrating over Lentz's Pond, Jefferson County, April 27, when 50+ were observed; 10+ were still there on May 4 (BM). Approximately 80-90 Cliff Swallows were found in Breckenridge County, April 14 (KC); 25 were at the CRL nesting colony on April 18 (FB); and 30+ were in Marion County between Liberty and Lebanon, April 28 (FL). Two Barn Swallows were first recorded in Pul, March 22 (JEL). In addition to the above, a cold front passage on May 6 produced flocks of hundreds of swallows (all species except Purple Martin) at MCFH (FB). On several trips from Fulton County to Ballard County, a few Fish Crows were heard and seen (CP, BM, MM, CMS). There were two reports of Red-breasted Nuthatch: one at Pul, March 22 (JEL), and two at Berea, Madison County, April 14 (DCh). Encouraging were the three reports of Bewick's Wren: a pair at Lei, April 28 (AW); two near Hamlin, Calloway County, May 9 (CP); and one singing near Antioch church, Washington County, May 18 (FL, WK). House Wrens returned later than usual, with the earliest on April 14 at Cave City, Barren County (MS). There were only two reports of Winter Wren: one in MCNP, April 8 (JB, PB); and one in Jefferson County Forest, April 11 (BM, MM). Two Marsh Wrens were seen and more heard in Owensboro on a KOS field trip, April 26 (JW, A. Powell); one was near Hamlin, along Kentucky Lake, Calloway County, May 8 (JEL).

Kinglets through Vireos — Both kinglets were in low numbers. Single Blue-gray Gnatcatchers returned to BPS on April 5 (KC) and MCFH on April 10 (FB); 12 were present at SWMA, April 11 (LR, KC); and there were one or two at three other locations. There were mixed reports of E. Bluebird: there seemed to be fewer birds than last year in Dan (FL), but in northern Jefferson and Oldham counties, numbers were up (FK, BM). The thrush migration seemed to be poor, with numbers exceptionally low for Gray-cheeked (which were also quite late), but Swainson's were up in numbers in the Louisville region. Am. Pipits were widespread and reported from six areas: a small flock (seven were counted on March 13) at Lentz's Pond, Louisville, Jefferson County, March 11 (CMS) and March 13 (BM); small numbers at Camp Ernst Lake, near Burlington, Boone County, March 13 and 14 (LMc); singles near SWMA, March 28 (LR, KC), and at Pul, April 4 (JEL); flocks of 15+ near Oak Grove, Christian County, and eight near Chaney Lake, Warren County, May 3 (BM, MM). Cedar Waxwing migration was best from mid-March to early April, with high counts of 120+ at Cave City, Barren County, March 11, and 60+ there on March 15 (MS), and 80+ at Madisonville, Hopkins County, April 1 (JH); there were also 35+ in Lei, May 30 (AW), 20+ at BPS, May 31 (KC), with a few reported elsewhere. Although Loggerhead Shrikes are still fairly common in western Kentucky, there were only a few reports from Dan and Barren County. A White-eyed Vireo was first recorded in Hopkins County, April 10 (JH) and at MCFH on

April 18 (FB). A Bell's Vireo was heard singing in the Ohio County strip-mine area south of Cool Springs, May 2 (BM, MM) and May 26 (BM, MM, CMS). A Solitary Vireo was at NBSP, April 10 (JB, PB). Eleven or twelve Warbling Vireos were seen or heard in Boyle and Marion counties, May 18, (FL, WK).

Warblers — The warbler migration this spring was not as exciting as in some years; as one observer stated "it was drawn out and somewhat uneventful." Both the Golden-winged and Blue-winged Warblers were present at LBL, April 18 (JB, PB); the Golden-winged was also found at MCNP and near Bernheim Forest, Bullitt County. Twenty plus Tennessee Warblers were noted in western Kentucky, April 18 (JB, PB). An Orange-crowned Warbler was singing on the University of Louisville campus, Jefferson County, May 6 (CMS). A Black-throated Blue Warbler was found in Hart County, April 25 (MS, SK). Pine Warblers were present in Madisonville, Hopkins County, throughout the entire period (JH); ten were at NBSP, April 10 (JB, PB). A Prairie Warbler at SWMA, April 11, was fairly early (KC, LR). Three Palm Warblers were encountered in Lei, April 12 (AW), ten were at LBL, April 18 (JB, PB), and singles were seen in Ohio and Fulton counties, May 9 (BM, MM, CMS). Black-and-white Warblers were present in good numbers (15) at NBSP, April 10 (JB, PB). Worm-eating Warblers were found at six locations, with eight at MCNP, April 20 (JB, PB). Louisiana Waterthrushes arrived later than usual: one at MCNP, April 8 (JB, PB); four at NBSP, April 10 (JB, PB); one in Jefferson County Forest, April 11 (BM, MM); and in eastern Kentucky, two at MCFH, April 18 (FB). A Mourning Warbler was present at BNP, May 25 (CMS).

Tanagers through Finches — Rose-breasted Grosbeaks were in low numbers throughout the migration period. Blue Grosbeaks are increasing throughout the state: records of interest include one found in Lincoln County, April 23, the earliest record for that area, but few seen thereafter (FL); a male seen in Grayson County along Highway 79, April 30 (KC); common in an Ohio County strip mine area, May 2 and 9 (BM, MM, CMS); one at University of Kentucky Agricultural Farm, Lexington, Fayette County, May 6 (WD); and one at Science Hill, Pulaski County, May 19 (D. Elmore, *vide* JEL). An Indigo Bunting had returned to Prospect, Jefferson County, April 16 (FM); other arrival dates were April 20 at Hanson, Hopkins County (*vide* JH) and April 21 at BPS (KC). The bird of the season was a *Green-tailed Towhee* that appeared in a residential section of Central City, Muhlenberg County, May 6. The bird was found by nine-year old Jenny Neace, who reported it to her mother, Susan Neace; after identifying the bird, Susan put the record on the Kentucky bird hot line. The bird remained May 6 through 9 and was seen (and photographed) by CMS, BM, DS, S and FS; it constitutes a first state record. Henslow's Sparrows were noted at two locations in Ohio County, April 25 and May 2 and 9 (BM, MM, CMS). One to three Fox Sparrows were observed at five widely scattered locations, March 2-27 (BM, MM, CMS, KC, DS, JH). The only reports of Lincoln's Sparrow were for 10+ birds on the levee, Fulton County, May 2 (BM, MM), one at MCFH, May 15 (FB), and one in Crescent Hill, Louisville, Jefferson County, May 7 (CMS). Fifteen White-throated Sparrows was the maximum number at a feeding station in Madisonville, Hopkins County, May 6 (JH); the species was last recorded at Lei, May 26 (AW). White-crowned Sparrows were last recorded at Lei, May 28 (AW). A single Dark-eyed Junco was still present at Burlington, Boone County, May 10 (LMc). Bobolinks were first noted in the Owensboro area, April 26, on a KOS field trip (JW, A. Powell, M. Flynn); other reports included 10+ in Fulton County, May 2 (BM, MM) and 30+ in Calloway County, May 9 (CP). A pair of *W. Meadowlarks* were heard singing and calling one mile west of Sassafras Ridge, Fulton County, May 15 (CMS); one individual was heard calling there, May 27 (BM, MM, CMS). Both Orchard and N. (Baltimore) Orioles were scattered and reported in low numbers only. The poor Purple Finch flight was reflected in the low number of migrants this spring; practically all reports were of single birds with the exception of those at BPS, where as many as 45 were counted, March 22-April 11 (KC). There were

few Pine Siskins this spring: at a feeder near Bronston, Pulaski County, 12+ were seen (JEl), whereas all other reports were of one to five birds.

Contributors — Jane Bell (JB), Pat Bell (PB), Fred Busroe (FB), Joe Caminiti (JC), Kathy Caminiti (KCa), David Chaffin (DCh), Kathryn Clay (KC), Herbert L. Clay, Jr. (HC), Dona Coates (DC), Wayne Davis (WD), Jackie Elmore (JEl), J. W. Hancock (JH), William Kemper (WK), Steve Kistler (SK), Lewis Kornman (LK), Frank Krull, Sr. (FK, Sr.), Fred Loetscher (FL), Lee McNeely (LMc), Fred Mansmith (FM), Burt L. Monroe, Jr. (BM), Mark Monroe (MM), Clell Peterson (CP), Kerry Prather (KP), Lene Rauth (LR), Anne L. Stamm (S), F. W. Stamm (FS), Russell Starr (RS), Thomas Stephens (TS), C. M. Stinson (CMS), Mitchell Sturgeon (MS), Donald Summerfield (DS), Alita Wilson (AW), Jim Williams (JW).

—9101 Spokane Way, Louisville 40241, and P. O. Box 23447, Anchorage 40223.

KENTUCKY BALD EAGLE COUNT FOR 1992

JAMES DURELL AND DAVID YANCY

Target dates for the 1992 eagle census were January 10 or 11, within a time frame of January 2-15. Weather was unusually warm and visibility was excellent. The warm weather was thought to have discouraged eagles and their waterfowl prey from moving from northern states into Kentucky. The count rose from 167 Bald Eagles in 1991 to 239 in 1992. Percentages of immature Bald Eagles for 1989, 1990, 1991 and 1992 were 36%, 33%, 24% and 36%, respectively.

In 1992, four nests were active in Kentucky. Two eaglets were hatched in the nest on the Ballard County Wildlife Area and three hatched in another nest. Two nests were on the Kentucky section of the Land Between the Lakes and another was in Tennessee. Table I summarizes the 1992 census data, with some earlier high records and the 1991 count.

Eagles within 15 miles of similar birds previously reported were not added to the totals. In 1991, 55 observers in 28 parties reported 267 other raptors. Sixty-one observers in 29 parties reported 388 other raptors (averages for 1985 to 1991 are in parentheses) as follows: Black Vulture 0 (16); Turkey Vulture 15 (9); Osprey 1 (0.3); Northern Harrier 15 (4.6); Sharp-shinned Hawk 1 (1.7); Cooper's Hawk 5 (1.7); Northern Goshawk 0 (0.14); Red-shouldered Hawk 4 (3); Red-tailed Hawk 156 (70); Rough-legged Hawk 3 (2); American Kestrel 150 (90); Merlin 1 (0.14); Peregrine Falcon 0 (3 in 1990, not verified by a biologist); unknown hawks 31 (4); Great Horned Owl 1; Common Barn Owl 0 (0.14).

In 1991 there were 147 eagle counters in 66 parties. In 1992 there were 192 people in 97 parties, representing the Kentucky Ornithological Society, Kentucky, Indiana, and U.S. Fish and Wildlife agencies, Land Between the Lakes, U.S. Forest Service, U.S. Army Corps of Engineers, Fort Knox, Mammoth Cave National Park, Bluegrass Ordnance Depot, Owensboro Area Museum, Tennessee Ornithological Society, Kentucky Department of Parks, Audubon Society and Bernheim Forest.

**TABLE I — Kentucky Bald Eagle Census, January 1-15, 1992,
with some earlier high counts.**

ROUTE	1992				Earlier Records	
	Ad.	Imm.	Total	1991	High	Year
Land Between the Lakes	59	37	96	72	112	1990
Reelfoot Lake	1	2	3			
Blood River - S. Calloway					2	1990
Mississippi River	17	5	23*	31	72	1984
Kentucky Bend	(3)					
Ohio R., up to Carrsville	20	22	42	27	89	1986
Ballard Wildlife Area	(9	12)				
Swan Lake, Ballard Co.	(1	3)				
Below Barkley Dam	(2	1)				
West Ky. Wildlife Area	(1		3)*			
Ohio, Carrsville to Henderson	9	4	13	4	17	1989
Ohio, Henderson to Meade Co.	2		3†			
Ohio, Meade to Louisville	2	2	4	2	5	1986
Ohio, Cincinnati to Ashland	2		2			
Bernheim Forest (1 golden)				1	3	1990
Nolin River Lake	2		2	1	3	1990
Ohio Co.		1	1			
Lake Vega, Madison Co.	1		1			
Muhlenberg Co., Green River	1		1			
Marion Co.	1		2*			
Green River Lake	6	3	9	9	12	1986
Barren River Lake			0	0	3	1989
Dale Hollow, Ky. portion	4	3	7	4	38	1989
Cumberland River, below Burks.	1		1			
Cumberland River, above Burks.	1		1	0	8	1986
Lake Cumberland	7	2	9	8	26	1990
Laurel Lake	9	4	13	2	9	1985
Grayson Lake	1		1	2	1	1989
Martin's Fork Lake			0	1	3	1988
Dewey Lake			0	0	1	1990
Cave Run Lake	4	1	5	3	10	1989
Total Bald Eagles	150	86	239*	167		
Adult Golden Eagles			3			
Cooperators			192	147		
Census parties			97	66		

() Included in figures above.

*Includes Bald Eagles, age unknown.

†Yellowbank Wildlife Area. Includes 1 unknown age.

3 Golden Eagles: 2 adults at Ballard Co. Wildlife Area, 1 adult at Bernheim Forest.

Other areas censused where searchers found no eagles: Ohio River-Trimble County to Cincinnati, Kentucky River, Guist Creek Lake, Rough River Lake, Mammoth Cave, Lake Beshear, and Herrington, Martin's Fork, Buckhorn, Carr Fork, Dewey and Paintsville Lakes.

— Kentucky Ornithological Society, 308 Meadow Lane, Frankfort.

Kentucky Department of Fish and Wildlife, Frankfort 40601.

FIELD NOTES

Great Blue Herons Nest in Pulaski County

On 23 June 1992 a group of nine people from Somerset Bird Club went to a Great Blue Heron heronry on the shore of White Oak Creek, an arm of Lake Cumberland. The heronry is at the top of a steep forested slope leading to water. It was difficult to see how many nests there were or how many held birds because they were about seventy-five feet above the ground in living beech trees and leaves obscured the view. Seven nests were observed, some with large young in them or with young standing on nearby branches. It appeared that the young were almost ready to fledge. In the immediate area of the nests the ground was covered with poke weed, which is a different ground cover from that in the surrounding forest. Black and Turkey Vultures use the area as a roost. The heronry is on U.S. Army Corps of Engineers property, so permission for access must be obtained. According to an area resident, Great Blue Herons nested in this area in 1991. I have also been informed that this is the first colony in the eastern portion of the state that has been reported to the Kentucky Ornithological Society.

—CAROLYN GAY HODGES, 141 Water's Edge Drive, Somerset, Kentucky 42501.

Green-tailed Towhee in Muhlenberg County, Kentucky

At approximately 6:00 p.m. C.S.T. on May 6, 1992 my nine-year-old daughter, Jenny, asked me to identify a bird at our feeder. After checking it through binoculars, I spent a frustrating evening reviewing the *Audubon Society Field Guide to North American Birds, Eastern Region* (Alfred A. Knopf), and *The Birds of North America* (Golden Press). Our stranger was about the size and body color of a female Cardinal, with a rufous cap, white throat, white belly patch, and lime green wing tips and tail. My best guess was that it was a Green-tailed Towhee (*Pipilo chlorurus*), but my guide said that it could not be. On Thursday night, after looking at another illustration of the towhee in an old field guide in the library, I observed the bird feeding extensively at the feeder area through the binoculars, matching the bird's features with the drawing in my book. I called the sighting in to the rare bird hotline number May 7.

Mike Stinson and Burt L. Monroe Jr. contacted my husband Jacob on the morning of May 8, and he was able to verify that the bird was still with us. The bird very graciously appeared at the feeder area within minutes of their arrival from Louisville about 10:30 that morning. They confirmed the bird's identity and observed and photographed him eating and chasing off our Cardinals. The bird was also observed by Brainard Palmer-Ball Jr. for a lengthy period later that day.

On Saturday, May 9, we did not see the Towhee until nearly noon, when my daughter saw it further back in the wooded area adjacent to our home. It was sighted about 2:00 p.m. by Anne and Fred Stamm and Don Summerfield. My son, Mark, Jenny, Jacob and I last saw the bird make a feeding stop about 7:00 p.m. that evening.

This brief visit was the first record of the Green-tailed Towhee in Kentucky. For a family of novice birders it was an extraordinary event in our lives.

—SUSAN E. NEACE, 401 N. 6th Street, Central City, Kentucky 42330

NEWS AND VIEWS

K.O.S. Fall Meeting

The Fall 1992 meeting of the Kentucky Ornithological Society will be held 2-4 October at Kentucky Dam Village State Resort Park. If you would like to make a presentation at the Friday evening meeting, please contact Fred Busroe, Department of Biological and Environmental Sciences, Morehead State University, Morehead, Kentucky 40351. Make plans to attend for fun, fellowship and good birding.

K.O.S. Field Trips

Saturday, 10 October — A trip is planned to observe shorebirds, ducks and possibly a Sora at Sloughs Wildlife Management Area, Henderson, Kentucky. We will meet at the McDonald's on Highway 41 in Henderson at 8:15 a.m. central time. Bring a lunch and shoes suitable for a walk through the marsh. The leader will be Brainard Palmer-Ball, Jr. - (502) 426-8549.

Saturday, 5 December — Hawks, Short-eared Owls and other birds will be sought on the Ohio County Strip Mines. The group will meet at Jerry's restaurant on the Western Kentucky Parkway (near the Beaver Dam exit) at 8:15 a.m. central time. Bring a sack lunch. The leader will be Kathryn Clay - (502) 895-3346.