

Western Kentucky University

TopSCHOLAR®

---

Student Organizations

WKU Archives Records

---

1985

## UA12/2/69 Sigma Alpha Epsilon: A Degree in Friendship

Sigma Alpha Epsilon

Follow this and additional works at: [https://digitalcommons.wku.edu/stu\\_org](https://digitalcommons.wku.edu/stu_org)



Part of the [Organizational Communication Commons](#), [Public Relations and Advertising Commons](#), and the [Social and Cultural Anthropology Commons](#)

---

This Article is brought to you for free and open access by TopSCHOLAR®. It has been accepted for inclusion in Student Organizations by an authorized administrator of TopSCHOLAR®. For more information, please contact [topscholar@wku.edu](mailto:topscholar@wku.edu).





# Sigma Alpha Epsilon

**ΣΑΕ**



**ΣΑΕ**



Rush weeks are always an exciting experience for the rushee and the active fraternity members. This time will turn out to be one of the most important weeks in the life of the individual looking at the Greek life in college and further ahead toward his chosen field of endeavor. There are many fraternities on campus, and we urge you to look at all of them. In order to get the most out of a fraternity at Western, it is essential to consider which fraternity has the most to offer.

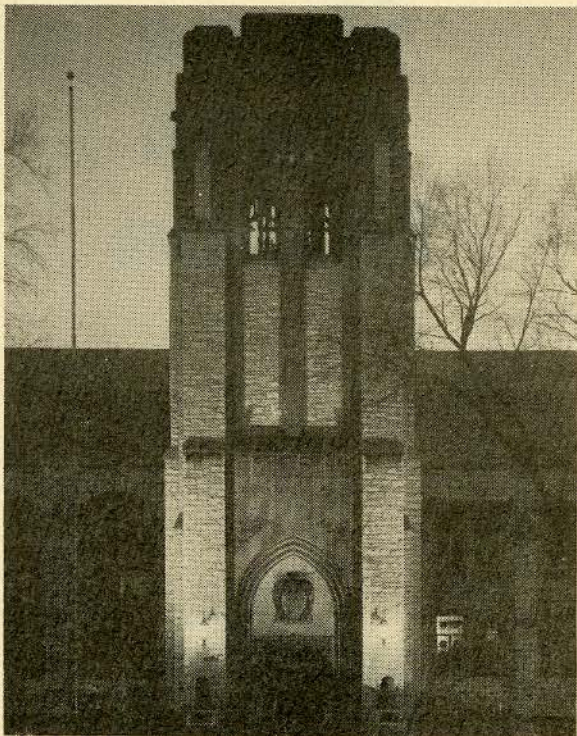
During Rush we will be looking for those young men who we feel possess those characteristics necessary to become an SAE. We want to get to know you on a personal basis and urge you to be in attendance at our Rush functions.

We feel that we have something unique to offer. The fraternity that you see is a very closely knit brotherhood. Everyone takes interest in his Brothers, and this feeling is the substance of our fraternity. The SAE's lead the fullest lives of all fraternity men on campus. The decision is yours, but we know one thing--over 186,000 young men have tried Sigma Alpha Epsilon and like it--we think you will, also.

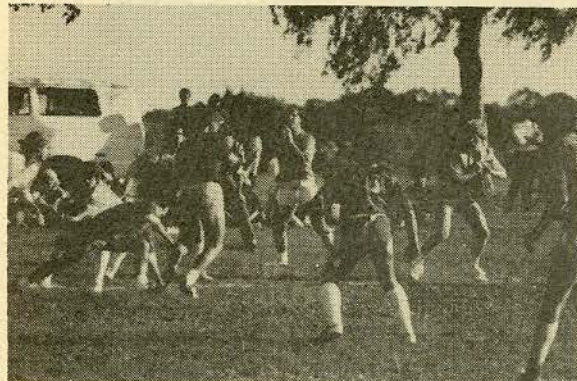
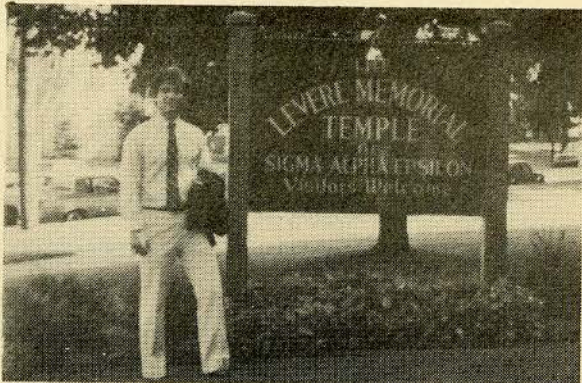
Kentucky Beta  
1410 COLLEGE DRIVE  
Western Kentucky University

... a degree  
in friendship





Sigma Alpha Epsilon was the first Greek-letter fraternity founded in the South, established at the University of Alabama on March 9, 1856. Since then, Sigma Alpha Epsilon has grown to be the largest and strongest fraternal organization in the United States. Nationally, SAE has the greatest number of initiates of any national fraternity, more than 186,000, which includes approximately 12,000 undergraduate Brothers. Sigma Alpha Epsilon has 189 chapters in 45 states, and boasts the distinction of having the first national headquarters of a fraternity, the Levere Memorial Temple in Evanston, Illinois. SAE was also the first fraternity to institute a leadership training seminar, the Leadership School, which began in 1935.



The Kentucky Beta Chapter at Western Kentucky University has reflected the same excellence. Since this chapter's inception in October of 1965, SAE has built the finest and most prestigious chapter on campus. Annually, the M. Reed Morgan Award is presented to the outstanding chapter on the WKU campus. The award has been given for the past eleven years, and Sigma Alpha Epsilon has been the winner eight of those eleven years.

Being one of the largest fraternities on campus, the SAE's are very active in every activity WKU has to offer. SAE is the current All-Sports Intramural Champion, with fine athletes in every sport. The SAE's enter a float in the Homecoming Parade and sponsor our Sweetheart as a Homecoming Queen Candidate.

Individually, SAE's participate in every aspect of campus life. We have Brothers playing in several varsity sports and Yell Leaders to back them up. SAE produces leaders of campus organizations such as The Student Development Foundation, Associated Student Government, University Center Board, Inter-Fraternity Council, Western Players, and The Big Red Marching Band.

A number of individuals from the Chapter were recognized for their accomplishments this past year. Three Brothers were selected for Who's Who Among American College Students. SAE placed four Brothers in the Order of Omega Greek Honor Society. SAE placed second in overall Grade Point Average last year, and first among chapters with over 40 members. SAE has brothers in English, Government, History, Biology, Pre-Med, and Omicron Delta Kappa and Phi Eta Sigma Honorary Societies.

The Chapter also participates in SAE's national Resident Educational Advisor Program, which provides for a graduate Brother functioning as a tutor-in-residence.



In other major activities, the chapter sponsors a Dance-a-Thon in the Spring Semester with the proceeds going to the Muscular Dystrophy Association. The Chapter participates in numerous community service projects, such as shopping sprees for under-privileged children at Christmas and providing food baskets for needy families at Thanksgiving. SAE works closely with other campus organizations in coordinating similar events.

We present our dates with the most admired party schedule on campus. Each semester promises impressive formal, semi-formal, and casual events, as well as a number of theme parties and "mixers" with other groups. Our chapter can lay claim to the fact that we support a large social budget, but our dues are comparative to other fraternities on campus.

Our house is the central location for all fraternity functions, and 25 Brothers live at the house during the school year. We are proud of recent improvements to our house and the fact that it is one of the largest and nicest chapter houses at Western.

