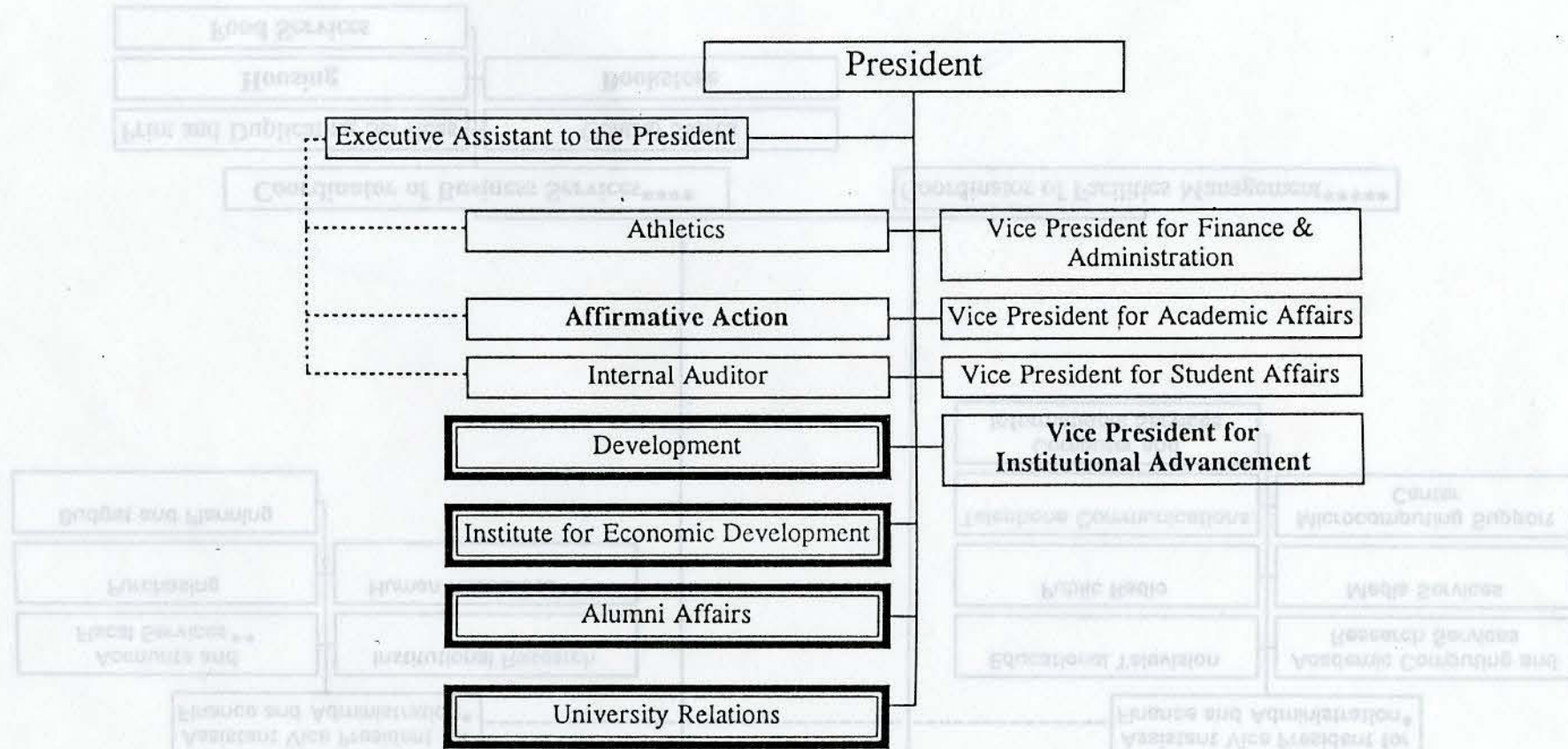


WESTERN KENTUCKY UNIVERSITY
 Organizational Chart
 January 22, 1993

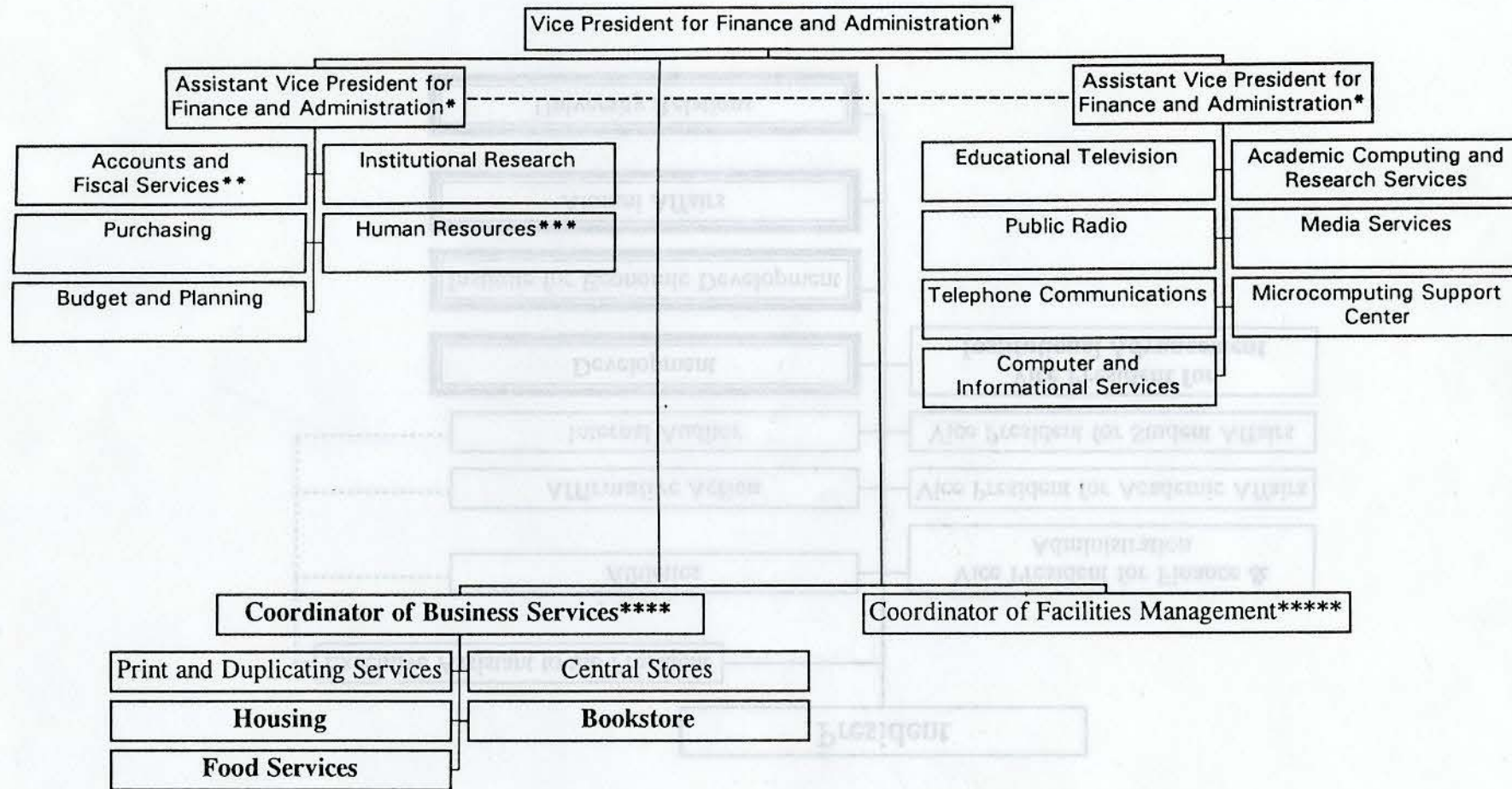


Bold type indicates a new unit in this division

[Box] indicates this unit is no longer located in this division

WESTERN KENTUCKY UNIVERSITY

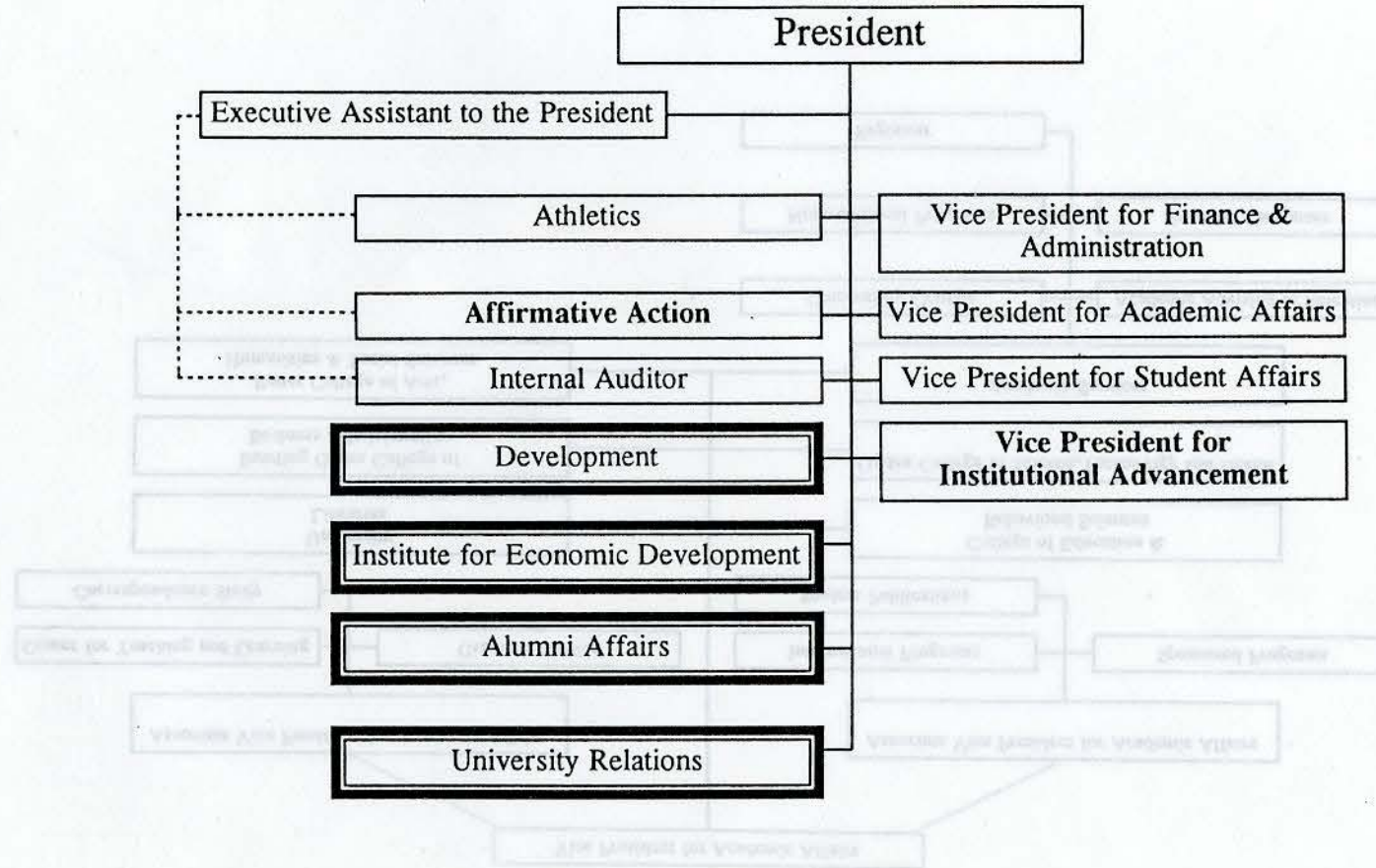
January 22, 1993



- * Current title is Administration and Technology
- ** Current title is Accounts and Budgetary Control
- *** Current title is Personnel Services
- **** Current title is Coordinator of Auxiliary Services
- ***** Current title is Director of Physical Plant

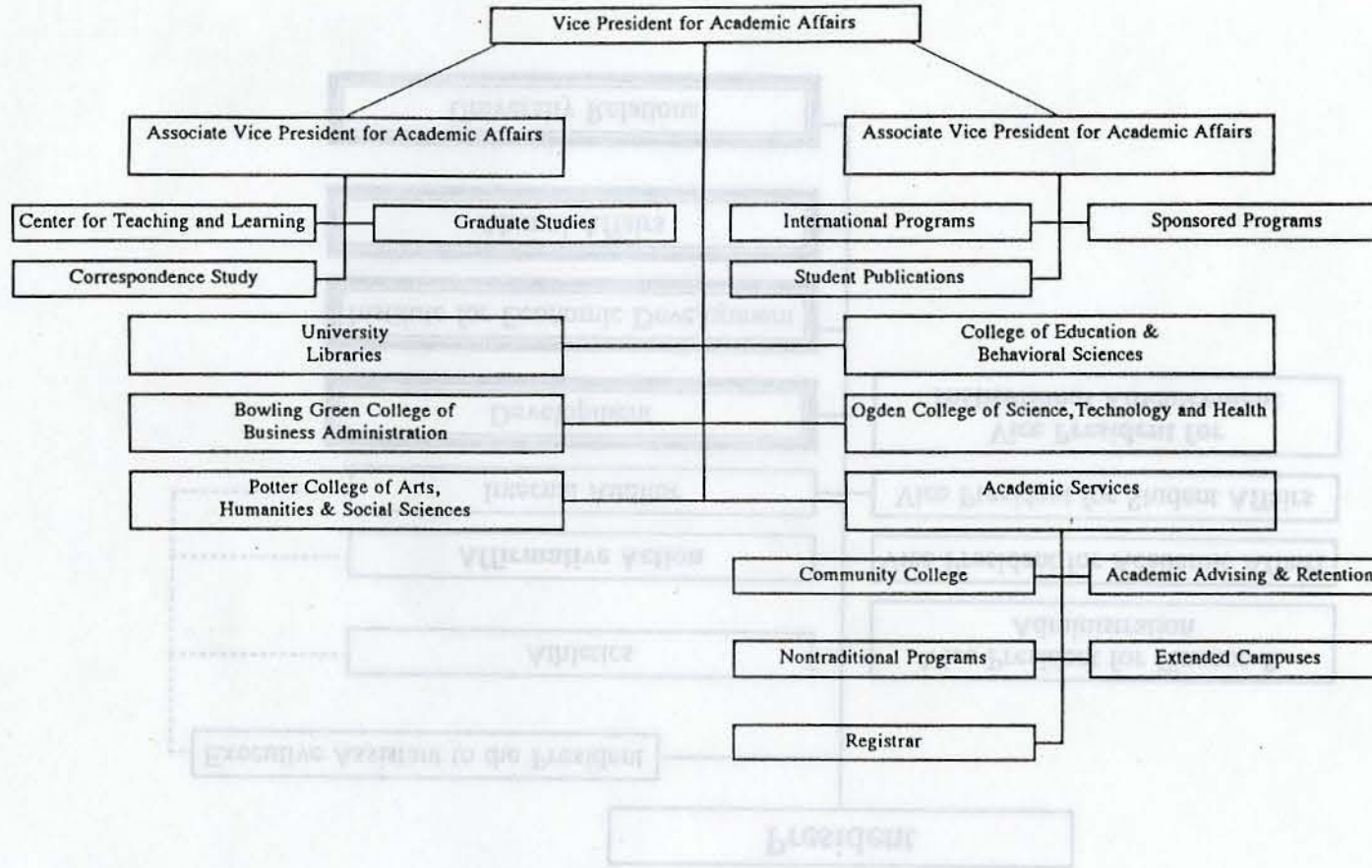
Bold type indicates a new unit in this division

WESTERN KENTUCKY UNIVERSITY
Organizational Chart
January 22, 1993



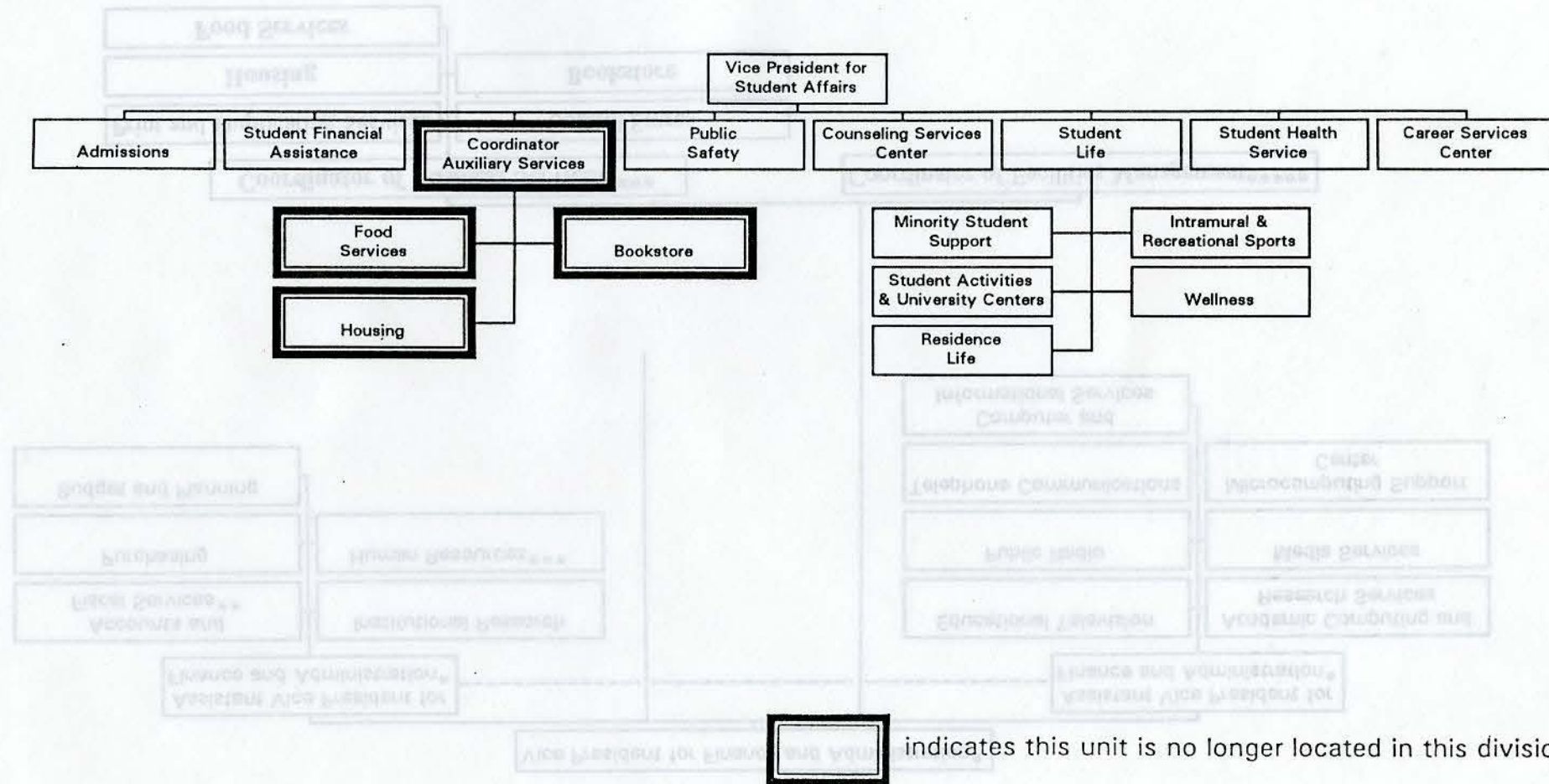
WESTERN KENTUCKY UNIVERSITY

January 22, 1993



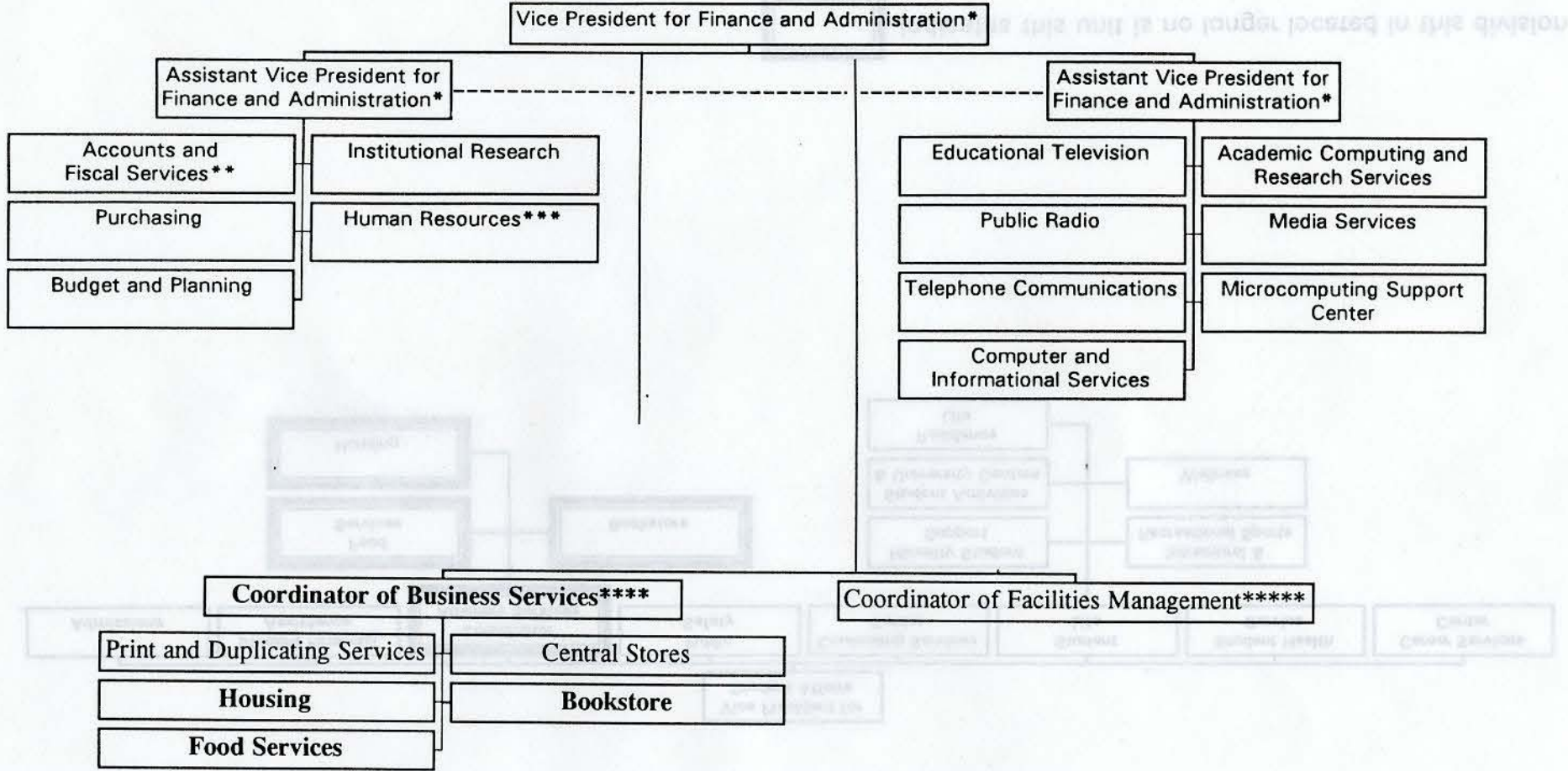
WESTERN KENTUCKY UNIVERSITY

January 22, 1993



WESTERN KENTUCKY UNIVERSITY

January 22, 1993

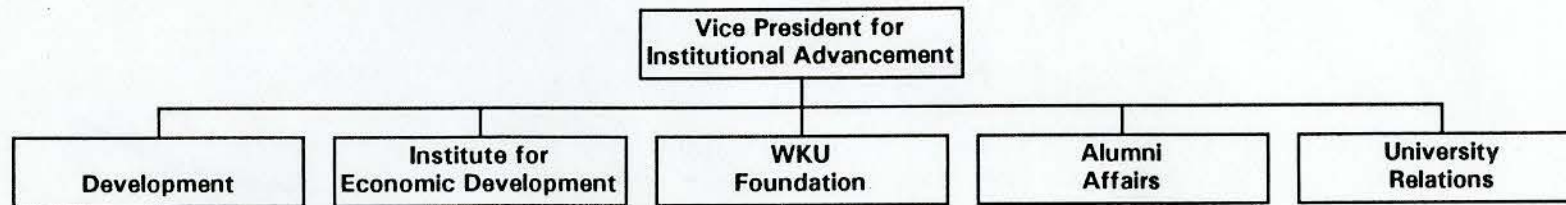


- * Current title is Administration and Technology
- ** Current title is Accounts and Budgetary Control
- *** Current title is Personnel Services
- **** Current title is Coordinator of Auxiliary Services
- ***** Current title is Director of Physical Plant

Bold type indicates a new unit in this division

WESTERN KENTUCKY UNIVERSITY

January 22, 1993



Bold type indicates a new unit.