

## Summer Stipend Comparisons

Source: WKU Faculty Status Survey (Fall 1996)




## Survey Comparisons

- All Participating Universities
  - 27 Universities
  - Code = All Univ or All
- KY Council on Higher Education (CHE) Master's Benchmark Universities
  - 20 Universities
  - Code = CHE
- KY CHE Master's Benchmark Universities Having Both NCATE and AACSB Accreditation
  - 15 Universities
  - Code = C/N/A
- KY Public Universities
  - 7 Universities
  - Code = KY



## Participating Universities

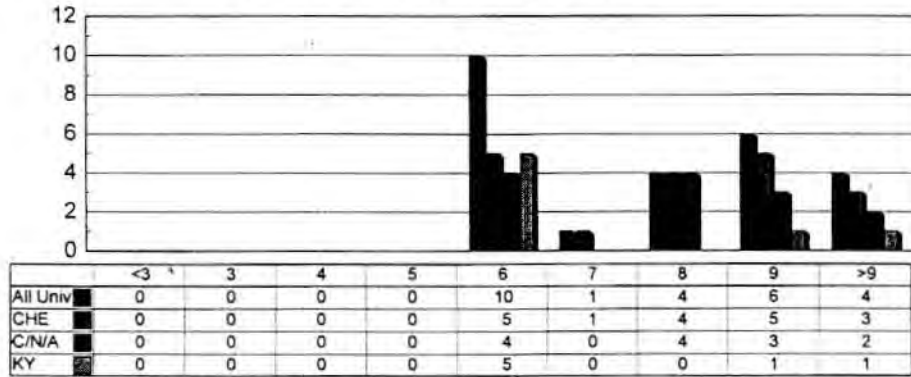
- Appalachian State University
  - Austin Peay State University
  - Ball State University
  - Cleveland State University
  - East Carolina University
  - East Tennessee State University
  - Eastern Illinois University
  - Eastern Kentucky University
  - Illinois State University
  - Kentucky State University
  - Marshall University
  - Miami University (Ohio)
  - Middle Tennessee State University
  - Comparisons: All, CHE, C/N/A
  - Comparisons: All, CHE
  - Comparisons: All, CHE, C/N/A
  - Comparisons: All, CHE, C/N/A
  - Comparisons: All, CHE, C/N/A
  - Comparisons: All, CHE, C/N/A
  - Comparisons: All, CHE, C/N/A
  - Comparisons: All, KY
  - Comparisons: All, CHE, C/N/A
  - Comparisons: All, KY
  - Comparisons: All, CHE
  - Comparisons: All, CHE, C/N/A
  - Comparisons: All, CHE, C/N/A
- 

## Participating Universities

- Morehead State University
  - Northern Kentucky University
  - Northwest Missouri State University
  - Ohio University
  - Old Dominion University
  - Southwest Missouri State University
  - Tennessee Technological University
  - Truman State University
  - University of Kentucky
  - University of Louisville
  - University of Memphis
  - Western Carolina University
  - Western Illinois University
  - Western Kentucky University
  - Comparisons: All, KY
  - Comparisons: All, KY
  - Comparisons: All, CHE
  - Comparisons: All, CHE, C/N/A
  - Comparisons: All, CHE, C/N/A
  - Comparisons: All, CHE
  - Comparisons: All, CHE, C/N/A
  - Comparisons: All, CHE
  - Comparisons: All, KY
  - Comparisons: All, KY
  - Comparisons: All, CHE, C/N/A
  - Comparisons: All, CHE, C/N/A
  - Comparisons: All, CHE, C/N/A
  - Comparisons: All, KY
- 

## Maximum Semester Credit Hours Taught By Regular F/T Faculty During Summer School

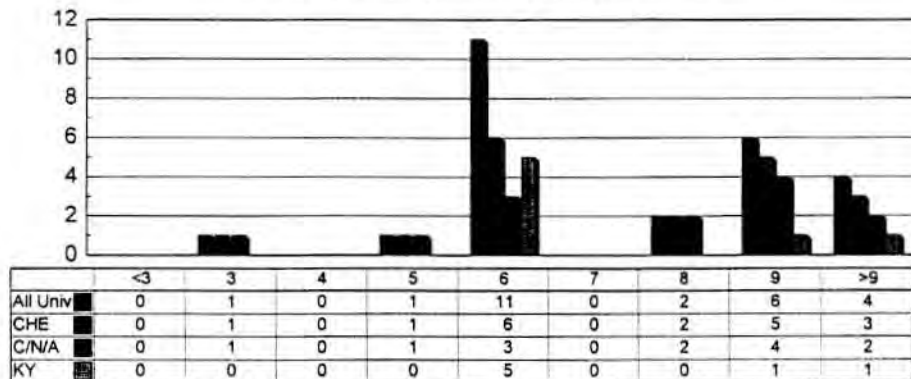
Number of Responding Universities



N = All (25), CHE (18), C/N/A (13), KY (7)

## Maximum Semester Credit Hours Taught By Temporary P/T Faculty During Summer School

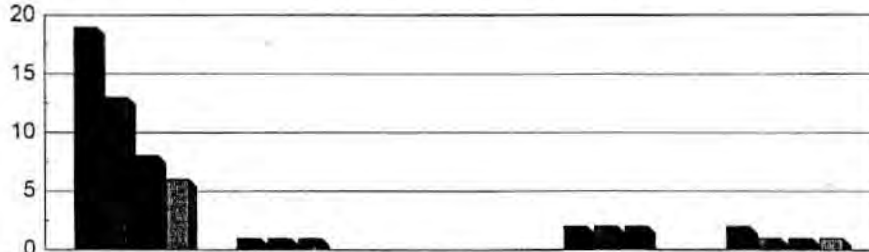
Number of Responding Universities



N = All (25), CHE (18), C/N/A (13), KY (7)

## What Is The Basis For Calculating Summer School Pay Per Credit Hour For Regular F/T Faculty?

Number of Responding Universities



	% Sal	\$ / Rank	\$ / Disc	Step/Rank	\$ / Credit Hour
All Univ	19	1	0	2	2
CHE	13	1	0	2	1
C/N/A	8	1	0	2	1
KY	6	0	0	0	1

N = All (24), CHE (17), C/N/A (12), KY (7)



## Percentage Of 9-Months Contract Salary Per Credit Hour For Regular Full-Time Faculty

Number of Responding Universities



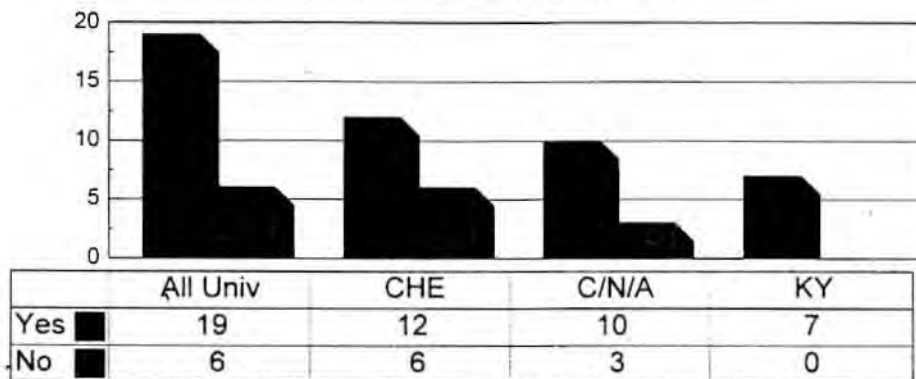
	Low %	Ave%	Med %	High %
All Univ	1.667	2.814	3.000	3.704
CHE	1.667	2.850	3.063	3.704
C/N/A	2.530	3.050	3.125	3.704
KY	2.000	2.748	3.000	3.330

N = All (19), CHE (13), C/N/A (8), KY (6)



## Is There A Maximum Payment For Summer School Teaching?

Number of Responding Universities



N = All (25), CHE (18), C/N/A (13), KY (7)

## What Is The Basis For Calculating The Maximum Payment For Summer School Teaching?

Number of Responding Universities

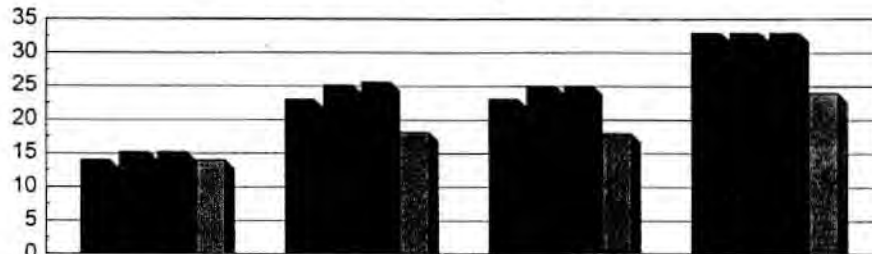


Some Universities Reported Max % and Max \$

N = All (19), CHE (12), C/N/A (10), KY (7)

## Maximum Percentage Of 9-Months Contract Salary Paid For Summer School Teaching, If Applicable

Number of Responding Universities



	Low %	Ave %	Med %	High %
All Univ	14.000	22.975	23.100	33.000
CHE	15.200	25.145	25.000	33.000
C/N/A	15.200	25.622	25.000	33.000
KY	14.000	18.200	18.000	24.000

N = All (17), CHE (12), C/N/A (10), KY (5)

## Maximum Dollar Amount Paid For Summer School Teaching, If Applicable

Number of Responding Universities

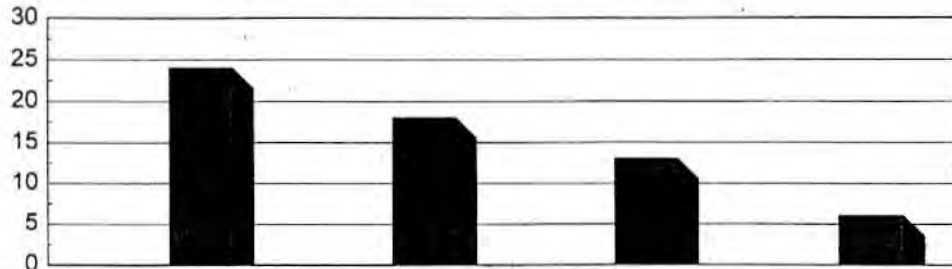


	Low \$	Ave \$	Med \$	High \$
All Univ	2,742	7,358	7,500	12,000
CHE	7,500	9,740	9,750	12,000
C/N/A	7,500	9,740	9,750	12,000
KY	2,742	5,929	6,000	8,402

N = All (8), CHE (3), C/N/A (3), KY (5)

## Is Summer School Teaching Load Considered A Part of Annual Teaching Load?

Number of Responding Universities



	All Univ	CHE	C/N/A	KY
Yes	0	0	0	0
No	24	18	13	6

N = All (24), CHE (18), C/N/A (13), KY (6)

