

10-1988

## UA28/1 The Personnel File

WKU Human Resources

Follow this and additional works at: [http://digitalcommons.wku.edu/dlsc\\_ua\\_records](http://digitalcommons.wku.edu/dlsc_ua_records)



Part of the [Human Resources Management Commons](#), and the [Labor Relations Commons](#)

---

### Recommended Citation

WKU Human Resources, "UA28/1 The Personnel File" (1988). *WKU Archives Records*. Paper 1471.  
[http://digitalcommons.wku.edu/dlsc\\_ua\\_records/1471](http://digitalcommons.wku.edu/dlsc_ua_records/1471)

This Newsletter is brought to you for free and open access by TopSCHOLAR®. It has been accepted for inclusion in WKU Archives Records by an authorized administrator of TopSCHOLAR®. For more information, please contact [topscholar@wku.edu](mailto:topscholar@wku.edu).

# The Personnel File

## Computer and Informational Services: Providing a unique service.



Back row: Al Smith, Judiella Maden, Emma Dean Westbrook, Polly Payne, Tom Bohuski, Dave Beckley, Garth Whicker, Jenetta Whalen, Chuck Wimpee, Jerry Harris, Kerry Moorman, Ronnie Scott, and Pat Widmann. Second row: Lydia Jagers, Debbie Burch, Charlotte Burchett, John Fox, and Leon Krantz. Front row: Curtis Logsdon, Norma Barkman, Diane Carver, Margaret Bryson, and Amy James. Not present: Donald Wade, Tom Devore, and Ernest Rubeay.

Computer and informational services is included under the umbrella of Administrative Affairs. Currently consisting of 23 employees, the department is divided into four sections. They are the systems and programming group, data entry group, data control group and computer operations group. The data entry, data control and computer operations group are contained in the operations side of the house and managed by Al Smith. The systems and programming group currently does not have a manager, but Mr. Curtis Logsdon, director of computer and informational services, functions in that position at the present time. The center processes work that is divided into two different types. One kind consists of routine jobs that are scheduled daily. The other type is composed of jobs that require a computer request form. On the average, the department processes approximately 200 computer request jobs per day. With the aid of a dual processor, the department is able to provide both administrative and academic computing services.

The computer center is open Monday-Friday from 7:30 a.m.-12:00 p.m. On Saturday and Sunday, the hours coincide with those of library services. A computer is available for academic computing 24 hours a day. The center has 196 asynchronous ports. A port is an access for a terminal.

There are approximately 160 synchronous terminals attached, all of which can be accessed spontaneously. Interwoven in this process is a communication network that ties all computers on campus together. These computers are also connected to the "Kentucky Educational Computing Network" (KECN). Through the KECN, Western's employees can gain access to computers at the University of Louisville and the University of Kentucky. This is a convenience that Western alone enjoys among colleges and universities throughout the state.

The computer center is currently in the beginning stages of a major computer software project. A number of critical systems will be replaced with commercially-produced software, and additional modules installed as well. The project is expected to require two years and will involve a large percentage of Western's administrative and staff personnel. At the completion of the project, computer-based services will be more functional and markedly more responsive to the university's needs. The software will also be more adaptable to change and considerably less expensive to maintain than our present software.

According to Mr. Logsdon, the center plans to modernize the system's software by installing a 4th generation language in each

continued on page 8



Dr. Monroe

Dr. Eula Ewing Monroe, professor of teacher education, received the University's 1988 Award for Outstanding Teaching at commencement exercises in May. She has been a faculty member in Western's College of Education since 1969, teaching first at the University Laboratory School and then in the Department of Teacher Education. Currently she teaches graduate and undergraduate courses in mathematics education. She was the recipient of the College of Education Faculty Excellence Award for Productive Teaching in both 1986 and 1988.

Dr. Monroe is actively involved in research and writing and providing in-service training to schools; however, she considers teaching to be "the bottom line" in determining her effectiveness as a college professor. "My task, first and foremost," she says, "is to provide quality instruction for my students." In the classes she teaches, this means that she must translate educational theory into meaningful practice. To do so, she draws heavily on her experience as an elementary classroom teacher in the Todd County, Kentucky, School

System and in the University Laboratory School. In addition, she tries out new teaching ideas and conducts demonstration lessons in area elementary schools.

Although teaching comes first in Dr. Monroe's list of professional priorities, she is firmly convinced that her research and writing efforts enhance her effectiveness as a teacher. She feels that these kinds of professional involvement help her to keep up-to-date in her field and encourage her to be reflective regarding course content and instructional strategies.

Dr. Monroe expresses a deep and abiding love for Western, having entered as a freshman in 1957 and earning both her B.S. and M.A. degrees here. She feels her return to campus in 1969 as a faculty member was "a very special kind of homecoming," an opportunity to serve the institution which had helped her realize her dream of becoming a teacher. She feels fortunate that, in turn, she has the opportunity to share Western's legacy as she works with students who choose to enter the teaching profession.

## Awards Program

Have you noticed last year's retirees sporting new watches, rings and pins? And some even have Benchmark Clocks—all identified with Western's official seal. Those gifts were presented under Western's new Awards Program.

The Awards Program was started last year to recognize members of the faculty and staff for longevity with a service award, and at retirement with a special retirement award.

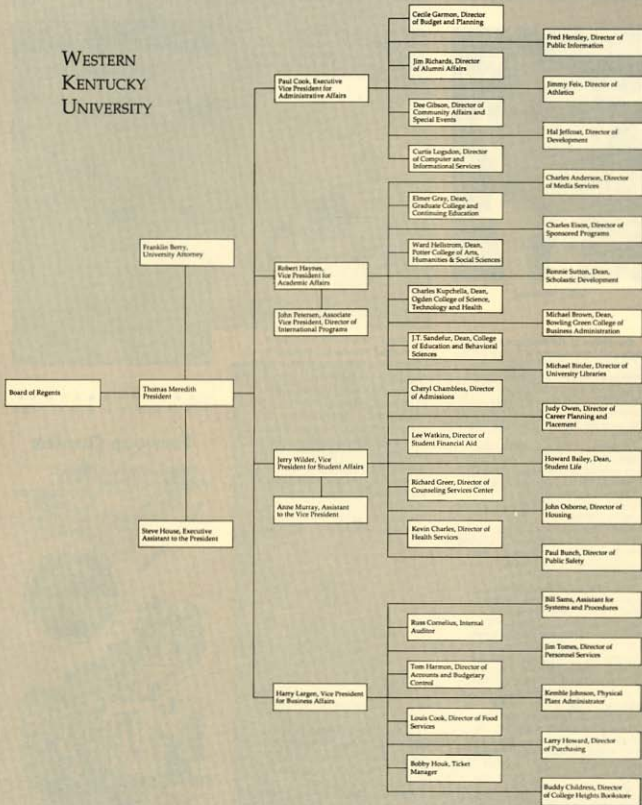
When employees complete twenty-five years of service, they become eligible for the service award. The variety of awards from which a selection may be made include a tie tack or lapel pin, a brooch, knife, key chain, money clip, gold chain with dangle, or belt buckle. These awards are expensive and of high quality and depending on the product, some are of 14K solid gold with a 10 point diamond.

Personnel who retire by reason of service or disability, and who receive an annuity from the Kentucky Teachers' Retirement System or the Kentucky Employees Retirement System, will be eligible for the retirement award. Retirees may select from a variety of choices including a solid gold tie tac or lapel pin, a Hamilton watch with the WKU seal embossed on the dial, a gold signet ring with the seal deep engraved, or a mantel clock with solid gold WKU logo. These awards are also of very high quality, and something a retiree would want to keep for a lifetime.

After the awards have been selected and ordered, they will be presented at an awards banquet held for honorees and spouses during the fall semester.



# WESTERN KENTUCKY UNIVERSITY



## Police Officer of the Year



Mike Wallace

Detective Mike Wallace has been selected as Western's Police Officer of the Year for 1987. Detective Wallace became a member of the WKU Police Department on April 16, 1984. He was previously employed by the F.B.I. Identification Division for 10 years in Washington D.C.

Wallace was promoted in the Patrol Division in February 1986 and served as the Assistant Shift Commander. In April 1986 Mike Wallace was selected and transferred to the Detective Division at W.K.U.P.D.

Detective Wallace has contributed in many outstanding areas. During 1987, he investigated and solved numerous theft and vandalism incidents.

The most significant area of accomplishment for Detective Wallace has been the added responsibility in the area of Crime Prevention. He initiated and met with hundreds of residents to discuss topics such as date rape, alcohol awareness, narcotics and drugs, and theft prevention. These meetings were conducted at night after a full day's work in the Detective Division. He has cooperated and assisted the Rape Crisis Center personnel on numerous occasions to assist in self-protection and rape crisis programs.

Detective Wallace is a professional, a dedicated and loyal police officer. Detective Wallace's initiative, perseverance, attention to

detail and his positive influence with those whom he meets daily make him a tremendous asset to this Department. He is a credit to WKU and the community he serves.



**Don't be left out of the fun.**

Season tickets for Hilltopper basketball can be purchased by Western faculty and staff at half the regular price from the ticket office in the main lobby of Diddle Arena. Chairback seats for men's games are \$40.00 a seat (2 seats maximum) and bleacher seats are \$27.50 a seat (2 seats maximum). Chairback seats for Lady Topper games are \$12.50 (2 seats maximum) and bleacher seats are \$7.50 (2 seats maximum) no reduction on red towel section. You'll need your I.D. For more information, call the ticket office at 745-5222.

### \* Enrollment Figures\*

According to Registrar Freida Eggleton, student enrollment for the 1988-89 school year is 14,116 mark. This figure is a substantial increase over the past two years which resulted in figures of 12,257 students for 1986-87, and 13,520 for 1987-88.

\*\*\*\*\*

## Historical Spotlight

### 40 Years Ago

Western's acting group, "Western Players," present "Missouri Legend," a drama portraying the life of Jesse James.

### 30 Years Ago

Western's fall enrollment set an all time record - 3,330 students. Also entering was the largest freshman class in the history of the school.

### 20 Years Ago

The first football game at newly constructed L.T. Smith Stadium, seating 19,250, was played. The game was the debut of head coach Jimmy Feix, current Athletics Director, and featured the Hilltoppers easily defeating Butler University, 35-0.

\*\*\*\*\*

## Famous Quotes

"'Tis one thing to be tempted,  
Another thing to fall."

SHAKESPEARE



## Student Payroll - Bi-Weekly Schedule

### Will Work During These Periods

December 19 - January 1  
 January 2 - January 15  
 January 16 - January 29  
 January 30 - February 12  
 February 13 - February 26  
 February 27 - March 12  
 March 13 - March 26  
 March 27 - April 9  
 April 10 - April 23  
 April 24 - May 7  
 May 8 - May 21  
 May 22 - June 4  
 June 5 - June 18  
 June 19 - July 2  
 July 3 - July 16  
 July 17 - July 30  
 July 31 - August 13  
 August 14 - August 27  
 August 28 - September 10  
 September 11 - September 24  
 September 25 - October 8  
 October 9 - October 22  
 October 23 - November 5  
 November 6 - November 19  
 November 20 - December 3  
 December 4 - December 17

### Time Sheets Due

In Payroll Office

January 5  
 January 19  
 February 2  
 February 16  
 March 2  
 March 16  
 March 30  
 April 13  
 April 27  
 May 11  
 May 25  
 June 8  
 June 22  
 July 6  
 July 20  
 August 3  
 August 17  
 August 31  
 September 14  
 September 28  
 October 12  
 October 26  
 November 9  
 November 23  
 December 7  
 December 21

### Checks Issued

In Payroll Office  
 January 16  
 February 30  
 February 13  
 February 27  
 March 13\*  
 March 27  
 April 10  
 April 24  
 May 8  
 May 22  
 June 5  
 June 19  
 July 3  
 July 17  
 July 31  
 August 14  
 August 28  
 September 11  
 September 25  
 October 9  
 October 23  
 November 6  
 November 20  
 December 4  
 December 18  
 To Be Announced



\* This is Spring Break Week and time sheets must be in by Wednesday Noon March 1, 1989

## Bi-Weekly Payroll Schedule 1989

\*\*\*\*\*

### Will Work During These Periods

December 19 - January 1  
 January 2 - January 15  
 January 16 - January 29  
 January 30 - February 12  
 February 13 - February 26  
 February 27 - March 12  
 March 13 - March 26  
 March 27 - April 9  
 April 10 - April 23  
 April 24 - May 7  
 May 8 - May 21  
 May 22 - June 4  
 June 5 - June 18  
 June 19 - July 2  
 July 3 - July 16  
 July 17 - July 30  
 July 31 - August 13  
 August 14 - August 27  
 August 28 - September 10  
 September 11 - September 24  
 September 25 - October 8  
 October 9 - October 22  
 October 23 - November 5  
 November 6 - November 19  
 November 20 - December 3  
 December 4 - December 17

### Will Be Paid On These Dates

January 13  
 January 27  
 February 10\*  
 February 24\*  
 March 3\*  
 March 24\*  
 April 7\*  
 April 21\*  
 May 5\*  
 May 19\*  
 June 2  
 June 16  
 June 30  
 July 14  
 July 28  
 August 11  
 August 25  
 September 8  
 September 22\*\*  
 October 6\*\*  
 October 20\*\*  
 November 3\*\*  
 November 17\*\*  
 December 1\*\*  
 December 15\*\*  
 To Be Announced



\*\*\*\*\*

\* Graduate Assistants checks issued on these dates for Spring, 1988

\*\* Graduate Assistants checks issued on these dates for Fall, 1988

## Life Insurance Rates Change

Western's group contract with Fidelity Mutual Life Insurance Company was renewed effective October 1, 1988 with some adjustments in the rate structure. Fidelity Mutual is chartered in Pennsylvania. Our group will be serviced by Mr. Mike Estes from the district office in Nashville.

The new rates, effective October 1, 1988 are as follows:

Optional Employee Life Insurance .....	\$ 315/\$1,000/Mo
Optional Spousal Insurance .....	\$ 285/\$1,000/Mo

The difference in premium rates between employee and spousal coverage is because the spousal coverage does not provide double indemnity (A.D.D.) in case of accidental death.

The University currently offers \$10,000 in group term life insurance coverage for each employee at no cost to the employee. The rates shown above are for optional life insurance coverage. The new rates should continue to be in effect until December 31, 1989. We are attempting to get all insurance contracts adjusted to a January 1 effective date to coincide with the Flexible Benefits Plan election dates.

It is our goal to have both health and life insurance contracts set up with the same scheduled effective date by January 1, 1991. Current contracts prevent us from scheduling both life and health insurance with similar effective dates before January 1, 1991 without an adverse effect on your contribution rates.

If you have any questions regarding the group life insurance plan, or other benefits, please call Bettie Fiener (5346) or Jim Tomes (5347).

## Flexible Benefits Plan Update

There is a new look in employee benefits. Effective September 1, the University initiated a flexible benefits plan—sometimes called a cafeteria plan.

The basic purpose of a flexible benefits plan is to provide members of the faculty and staff with optional benefits on a tax-sheltered basis. Provisions for such plans are made in the I.R.S. code, and ideally the employer makes a package of benefits having a specific dollar value available to the employee. The employee selects the benefits best suited to his or her personal situation and receives the balance of the package in taxable cash.

Under the I.R.S. code, the benefits package can include such items as life insurance, disability insurance, medical insurance, dental insurance, extra days of vacation, pre-paid legal expenses, child care expenses, and out-of-pocket medical expenses. All of those, except the cash option, would be sheltered from federal, state and county income tax. Elections, once made, are for a twelve-month period and cannot be changed during the year except when there is a major change in family status. Events which would authorize a change include marriage, divorce, death of a spouse or child, birth or adoption of a child, and termination of employment of a spouse.

Western's new plan is now in a transition period. We offer only additional life insurance, spousal life insurance and participation in one of the three medical insurance programs at the present time with no cash options. Additional options will be made available at some future date after new computer software has been purchased and installed.

Because many of the teaching faculty are not present for business purposes during the summer months, January 1 has been established as the flexible plan anniversary date. This means that eventually all benefit options will be made once each year on that date for participation in the flexible plan as required by law.

The Department of Personnel Services will correspond directly with individual employees during the month of December regarding the plan for 1989.

### Employment Activities

During the period July 1, 1987 to June 30, 1988 3,526 persons formally applied for employment at Western Kentucky University. 138 of these persons (3.9%) were hired during the same period. 124 University employees (faculty and staff) received promotions during the 1987-88 fiscal year.

The breakdown of Western's regular full-time personnel by occupational category effective September 1, 1988, was as follows:

EEO Occupational Category	Number of Employees
Executive, Administrative & Managerial	99
Faculty	557
Professional Nonfaculty	228
Secretarial/Clerical	308
Technical/Paraprofessional	22
Skilled Trades	98
Service/Maintenance	264
	1,576

### Classified Semi-Monthly Payroll

Beginning October 1, classified monthly employees began receiving their pay on a semi-monthly basis. The first check under this new procedure was issued October 15. Deductions were equal to one-half the monthly rate. However, adjustments were made in the first check to cover the increase in the cost of life insurance. Questions concerning your checks should be directed to Sharon Topolka (5352) or Georgia Powell (2073).

Attendance records (Form 9) should continue to be submitted to Personnel on a monthly basis.



## Service Anniversaries

### 25 years

**Carl Chaff**, Professor, Government Education  
**Mary Cnisp**, Associate Professor, Teacher Education  
**Betty Dittwiler**, Professor, Mathematics  
**Jeff Jantz**, Professor, Biology  
**William J. Jones**, Professor, Government  
**Jim Wayne Miller**, Professor, Modern Languages and Intercultural Studies  
**Carol Lockhart**, Associate Professor, English  
**Janet Schwartzkopf**, Associate Professor, English  
**Sara Taylor**, Associate Professor, Teacher Education  
**Mazel Whalain**, Checker, Downing University Center Cafeteria and Grill

### 20 years

**Faud Baali**, Professor, Sociology, Anthropology and Social Work  
**Thomas Baldwin**, Professor, Modern Languages and Intercultural Studies  
**James Barksdale Jr.**, Professor, Mathematics  
**Willie Barry**, Professor, Sociology, Anthropology and Social Work  
**George Calkins**, Professor, Economics  
**Keith Carr**, Professor, Economics  
**Elynn Clark**, Professor, Psychology  
**Lynn Gray**, Dean, Graduate College  
**Drew Harrington**, Professor, History  
**Charles Hennickson**, Professor, Chemistry  
**Norman Hunter**, Professor, Chemistry  
**Hugh Johnson**, Building Services Group Leader, Physical Plant  
**James Johnson**, Associate Director, Graduate College  
**Kathleen Kalab**, Professor, Sociology, Anthropology and Social Work  
**Edward Keamy III**, Professor, Government  
**Rosney McCurry**, Director of Electron Microscopy, Physical Plant  
**Jack McGregor**, Professor, Geography and Geology

**James McGuire**, Professor, Agriculture  
**Glenn Powers**, Professor, Mathematics  
**Rudolph Pinks**, Professor, Biology  
**Joyce Rasdall**, Professor, Home Economics and Family Living  
**James Richards**, Director, Alumni Affairs  
**John Riley**, Professor, Chemistry  
**Ivy Robinson**, Personnel Services Coordinator, Personnel Services  
**James Sanders**, Associate Director, Media Services  
**Jack Schock**, Professor, Sociology, Anthropology and Social Work  
**Ronald Seeger**, Professor, Geography and Geology  
**Vernon Shesley**, Professor, Educational Leadership  
**Frank Steele**, Professor, English  
**Patricia Taylor**, Associate Professor, English  
**Ronald Venker**, Professor, Philosophy and Religion  
**Carroll Wells**, Professor, Mathematics  
**Kenny Wells**, Assistant Air Conditioning Supervisor, Physical Plant  
**Joe Winstead**, Professor, Biology  
**Terrell Woolsey**, Manager, Shipping and Receiving

### 15 years

**John Faiss**, Associate Professor, Sociology, Anthropology and Social Work  
**Norman Phipps**, Building Services Group Leader, Physical Plant

### 10 years

**Torle Cockrial**, Executive Secretary, Office of the Executive Vice President  
**Curtis Foster**, Serials Supervisor, Library Automation and Technical Services  
**Reginald Laswell**, Library Department Head, Library Automation and Technical Services  
**Annie Davis**, Building Services Attendant, Physical Plant  
**Carol Holton**, Senior Secretary, College of Education and Behavioral Sciences  
**Marian Rogers**, Accounts Specialist, Whitstopper Athletic Foundation  
**Neva Whitlow**, Building Services Attendant, Physical Plant

### 5 years

**Rebecca Bennett**, Career Preparation Specialist, Cooperative Education  
**Brenda Dickson**, Data Files/Accounts Specialist, Academic Computing and Information Services  
**Evan Reiblich**, Roofing Repair Specialist II, Physical Plant  
**William Breakfield**, Packer Truck Driver, Physical Plant  
**Virgil Miller**, Building Services Attendant, Physical Plant  
**Annie Allen**, Building Services Attendant, Physical Plant  
**Michael Germanceni**, Building Services Attendant, Physical Plant  
**Michael Goodwin**, Kitchen Supervisor, Downing University Center Cafeteria and Grill

\* \* \* \* \*

## Personnel Changes

**Tess Abel**—from Residence Hall Director, Sr. Level; Residence Hall Director, Sr. Level  
**Richard Ayres**—from Assistant Professor to Associate Professor, Management and Marketing  
**Edward Bohlander, Jr.**—from Associate Professor to Professor, Sociology, Anthropology, and Social Work  
**Victoria Bradley**—from Instructor to Assistant Professor, Nursing  
**Dudley Brown**, Professor to Professor to Professor, Physics and Astronomy  
**Harvey Cox**—from Building Services Group Leader to Building Services Supervisor, Physical Plant  
**Lucy Daniels**—from Library Assistant III to Circulation Desk Supervisor, Library Public Services  
**John Faiss**—from Associate Professor to Professor, Sociology, Anthropology, and Social Work  
**Doreen Geddes**—from Instructor to Assistant Professor, Communication and Broadcasting  
**Ann Goetting**—from Associate Professor to Professor, Sociology, Anthropology, and Social Work

**Richard Hackney**—from Associate Professor to Professor, Philosophy  
**Ann Hildebrand**, Senior Administrative Secretary, Men's Basketball to Senior Departmental Secretary, Computer Science

**Carolyn Houk**—from Assistant Professor to Associate Professor, Teacher Education

**Vera Howerton**—from Principal Secretary to Executive Secretary, Ogden College

**Aaron Hughey**—from Assistant Director to Associate Director, Housing Office

**Thomas Jacob**—from Residence Hall Director to Assistant Complex Director, Residence Life

**Elaine Kennedy**—from Producer/Announcer to Producer/Announcer, Media

**Frank Kesting III**—from Assistant Professor to Associate Professor, Teacher Education

**Hak Young Kim**—from Assistant Professor to Associate Professor, Economics

**Joan Krenzin**—from Associate Professor to Professor, Sociology, Anthropology, and Social Work

**Karen Manion**—from Assistant Residence Hall Director to Residence Hall Director, Residence Life

**Eugene Mayers**—from Assistant Professor to Associate Professor, Health and Safety

**Virgil Miller**—from Building Services Mechanic, Physical Plant

**Jane Moore**—from Senior Producer/Announcer to Operations Manager, Media Services

**Michael Morse**—from Associate Professor to Professor, Journalism

**Thomas Nicholson**—from Assistant Professor to Associate Professor, Health and Safety

**Earl Pearson**—from Associate Professor to Professor, Chemistry

**Karen Putz**—from Associate Professor to Professor, English

**Jodie Pennington**—from Assistant Professor to Associate Professor, Agriculture

**Robert Reber**—from Assistant Professor to Associate Professor, Management and Marketing

**Ann Ruff**—from Assistant Professor to Associate Professor, Teacher Education

**Kelly Rutledge**—from Assistant Residence Hall Director to Residence Hall Director, Residence Life

**Michelle Salisbury**—from Instructor to Assistant Professor, Nursing

**Michael Seidler**—from Assistant Professor to Associate Professor, Philosophy and Religion

**Jill Smith**—from Residence Hall Director to Residence Hall Director, Sr. Level, Residence Life

**John Smith**—from Technical Support Specialist, Industrial and Engineering Technology to Supervisor, Instrument Shop Operations, Ogden College

**Joyce Smith**—from Building Services Attendant to Building Services Group Leader, Physical Plant

**Bob Somers**—from Coordinator to Associate Director, Career Planning and Placement

**David Stiles**—from Assistant Professor to Associate Professor, Agriculture

**Dore Thayer**—from Instructor to Assistant Professor, Theatre

**Evelyn Thibault**—from Associate Professor to Professor, Library Public Services



system. They also plan to become involved in data base, artificial intelligence, and query, which will allow people to use the computer in a sophisticated manner without being highly trained. Logsdon further envisions their long range objective as one of staying in the mainstream of hardware and software technology so that they can maximize their potential for meeting the needs of faculty, staff and students. He continues by saying, "Development of computer services at Western has been a challenge not only by servicing the people, but by physical facilities and budget as well. We badly need a physical location designed for computer services and other similar services that have a common need so that we can efficiently deliver services to the people in the community."

When summing up his department as a whole, Mr. Logsdon speaks most appreciatively of his staff. He comments, "The personnel in this department are as competent as any you would find in any operation. They want to be a part of this institution, and they are committed to it. Therefore, they get the job done."

\* \* \* \* \*

Personnel Changes continued from page 7

**Ruby Vandiver**—from Accounts Clerk, Accounts and Budgetary Control to Senior Administrative Secretary, Men's Basketball

**John Yokurka**—from Associate Professor to Professor, Teacher Education

**Barton White**—from Assistant Professor to Associate Professor, Communication and Broadcasting

**Peggy Wright**—from Assistant Professor to Associate Professor, Library Public Services

**Elaine Young**—from Accounts Clerk to Senior Administrative Clerk, Accounts and Budgetary Control

\* \* \* \* \*

## New Employees

**Michele Adler**—Physical Plant, Building Services Attendant

**Robert Antony**—History, Assistant Professor

**Sandra Audrey**—Government, Assistant Professor

**Kenneth Balak**—Biology, Assistant Professor

**Huam Barkawi**—Finance and Management Information Systems, Instructor

**Jo Braka**—Training and Technical Assistance Services, Teacher

**Linda Brown**—Agriculture, Visiting Assistant Professor

**Pat Carr**—English, Assistant Professor

**Ken Cline**—Training and Technical Assistance Services, Administrative Secretary

**Thomas Cunningham**—Nursing, Instructor

**Dennis Cunniff**—Industrial and Engineering Technology, Assistant Professor

**Tony Dampsey**—Health and Safety, Visiting Assistant Professor

**Dawn Dorfio**—Residence Life, Assistant Residence Hall Director

**Teresa Donelson**—Home Economics and Family Living, Purchasing Agent/Asst. Manager

**Joy Beth Estlin**—Student Financial Aid, Financial Aid Accounts Officer

**Clara Ernst**—Mathematics, Assistant Professor

**Jackson Flanagan**—Educational Leadership, Associate Professor

**Stuart Foster**—Geography and Geology, Assistant Professor

**Gina Frieden-Graham**—Counseling Services Center, Staff Psychologist

**Karen Gragg**—Mathematics, Assistant Professor

**Carolyn Hegaman**—Student Support Services, Counselor

**Christopher Hamilton**—Government, Assistant Professor

**Robert Hansen**—Accounting, Professor

**Jack Hock**—Extended Campus - Glasgow, Director

**Judith Hoover**—Communication and Broadcasting, Assistant Professor

**Freddy Horn**—Physical Plant, Building Services Attendant

**Sandra Horn**—Library Special Collections, Museum Store Clerk

**William Howard**—Allied Health, Assistant Professor

**Steven Hunt**—Administrative Office Systems, Assistant Professor

**Joey Johnson**—Admissions, Admissions Counselor

**Maui Johnson**—Student Support Services, Assistant Professor

**Tina Kelley**—Residence Life, Assistant Residence Hall Director

**Bernice Kinsler**—Physical Plant, Building Services Attendant

**Veronica Koss**—Art, Assistant Professor

**Dottie Lake**—Development Office, Accounts Clerk

**Terrence Likes**—Communication and Broadcasting, Instructor

**Kimberly Logan**—Residence Life, Residence Hall Director

**Herman Manakyan**—Finance and Management Information Systems, Assistant Professor

**Beattie Marshall**—Physical Plant, Building Services Attendant

**Cheres McAlpine**—Residence Life, Assistant Residence Hall Director

**Tina McPherson**—Continuing Education, Administrative Secretary

**Thomas Meredith**—President

**Alice Mikovich**—Teacher Education, Instructor

**Kathleen Moore**—Teacher Education, Instructor

**Lisa Morgan**—Residence Life, Assistant Complex Director

**Gregory Myers**—Residence Life, Residence Director, Sr. Level

**Ruby Nichols**—Physical Plant, Building Services Attendant

**David Owens**—Physical Plant, Senior Mason

**Gay Perkins**—Library Public Services, Business Reference Librarian

**Victor Poirier**—Counseling Services Center, Staff Psychologist

**Hugh Phillips**—History, Assistant Professor

**Janise Phillips**—Graduate College, Staff Assistant

**Patricia Purcell**—Accounts and Budgetary Control, Accounts Clerk

**Mitchell Randolph**—Residence Life, Assistant Residence Hall Director

**Colleen Reardon**—Music, Assistant Professor

**Stanley Renas**—Management and Marketing, Associate Professor

**Michele Reynolds**—Residence Life, Assistant Residence Hall Director

**Clara Rienehart**—Biology, Assistant Professor

**Nancy Roznow**—Art, Department Head

**Eugenie Royal-Williams**—Geography and Geology, Instructor

**Melissa Sims**—Training and Technical Assistance Services, Teacher

**John Stallard**—Administrative Office Systems, Professor

**Linda Staten**—Physical Plant, Building Services Attendant

**DiAnne Trotter**—Accounts and Budgetary Control, Accounts Clerk

**Moosa Vallinezhad**—Economics, Assistant Professor

**Wib Vandermeer**—Physics and Astronomy, Assistant Professor

**Cynthia Vincent**—Admissions, Admissions Assistant

**Antia Walter**—Print Shop, Duplicating Machine Operator

**Beth Weber**—Training and Technical Assistance Services, Teacher

**Steven White**—Accounting, Assistant Professor

**Patricia Widmann**—Computer and Informational Services, Systems Analyst

**Judy Woodring**—Communication and Broadcasting, Assistant Professor

**Charles Zentlmoyer**—Dawning University Center Cafeteria and Grill, Dish Machine Operator

\* \* \* \* \*

## Retirements

**Edna Broderick**—Bookstore Clerk, College Heights Bookstore, 10/31/88

**Wallace Causey**—Gabinetmaker, Physical Plant, 10/31/88

**Vivian Jordan**—Study Abroad Specialist, International Programs and Projects, 10/31/88

**Hubert Logsdon**—Maintenance Plumber, Physical Plant, 9/30/88

**Minnie Price**—Book Clerk Supervisor, College Heights Bookstore, 10/31/88

**Alice Siddens—Jr.**—Accountant, Accounts & Budgetary Control, 10/31/88

**William Whitcomb**—Mason, Physical Plant, 9/30/88