

Western Kentucky University

**TopSCHOLAR®**

---

WKU Archives Records

WKU Archives

---

12-7-1963

## UA12/2/1 College Heights Herald, Vol. 43, No. 9-Z251

WKU Student Affairs

Follow this and additional works at: [https://digitalcommons.wku.edu/dlsc\\_ua\\_records](https://digitalcommons.wku.edu/dlsc_ua_records)



Part of the [Journalism Studies Commons](#), [Mass Communication Commons](#), [Public Relations and Advertising Commons](#), [Social History Commons](#), [Sociology Commons](#), [Sports Studies Commons](#), and the [United States History Commons](#)

---

### Recommended Citation

WKU Student Affairs, "UA12/2/1 College Heights Herald, Vol. 43, No. 9-Z251" (1963). *WKU Archives Records*. Paper 2145.

[https://digitalcommons.wku.edu/dlsc\\_ua\\_records/2145](https://digitalcommons.wku.edu/dlsc_ua_records/2145)

This Other is brought to you for free and open access by TopSCHOLAR®. It has been accepted for inclusion in WKU Archives Records by an authorized administrator of TopSCHOLAR®. For more information, please contact [topscholar@wku.edu](mailto:topscholar@wku.edu).

# College Heights Herald

Western Kentucky State College

VOLUME 43, NO. 9-2251

BOWLING GREEN, KENTUCKY

SATURDAY, DECEMBER 7, 1963



A DREAM COME TRUE for Western officials, alumni, and students is the huge, circular Academic-Athletic Building, located on the Russellville Road at 16th St. Constructed at a cost of \$3,000,000, the building houses E. A. Diddle Arena, 30 master classrooms, an olympic-size swimming pool, auxiliary gymnasiums, locker rooms, offices, and storage space. Governor Bert Combs will deliver the dedicatory address during the afternoon program, scheduled to begin at 1:30, and Lt. Governor Wilson W. Wyatt will be the principal speaker at the evening dedication of E. A. Diddle Arena. Over 9,500 fans are expected to be on hand for the dedicatory game tonight between the Western Hilltoppers and the Vanderbilt Commodores.

## Dedication Of A-A Building And E. A. Diddle Arena Set For Today

Today another star is added to the crown of Western. After days, months, and years of planning and laboring, the Academic-Athletic Building and E. A. Diddle Arena is a completed reality and is to be officially dedicated.

Concluding the dedication ceremonies, Western will battle Vanderbilt University in the Topper's opening game of the 1963-64 season. The 8:15 p.m. game begins Coach E. A. Diddle's 42nd year at Western.

### Governor Combs To Speak

Governor Bert T. Combs will deliver the dedicatory address at the afternoon session. Beginning at 1:30 p.m., the program will begin with an academic procession. Other speakers on the program will represent the student body, faculty, alumni, and Board of Regents. Visitors will be invited to tour the building during an open house following the dedication. The athletic part of the build-



GOV. BERT COMBS

ing will be dedicated in a separate program beginning at 6:30 p.m. in the E. A. Diddle Arena. Lieutenant Governor Wilson Wy-



LT. GOV. WILSON W. WYATT

att. will deliver the address during the ceremony.

Coach Edgar A. Diddle will be honored in halftime ceremon-

ies to be conducted by the W. club of former Western athletes. A number of attending past Western greats will be introduced. To highlight this part of the program Coach Diddle will be presented a 1964 automobile — a token of appreciation from many of his friends.

The completion of the \$3,000,000 structure brings to a three year long job.

### Ground Breaking

Ground breaking ceremonies began the actual work November 17, 1961. The program was planned to coincide with Western Founder's Day. However, at that time Western's building

committee had been at work on plans for the giant structure for more than a year.

Many Western students have already been initiated to the fact that the building is a multi-purpose facility. The home of three academic departments, it provides much needed classroom and office space for the college.

### Three Departments

Around the circular perimeter of the building are 30 master classrooms, lecture rooms, and seminar rooms, plus offices for the faculties of the three de-

Continued on page 11, column 3

## "A Fabulous Facility," Says Dr. Thompson

By Jane Trevathan

An elated President Kelly Thompson terms the all-modern Academic-Athletic Building and E. A. Diddle Arena, "a fabulous facility that will serve not only as a great athletic arena for this geographic area, but an edifice that can be used for all types of community events, cultural and business-wise."

The President continued, "The idea for this building came to me about three years ago. Most new gyms were being built by putting them down into the ground, but I thought it would be better to get above the ground and capture the space you would turn over to the soil. Without taking credit from the architects or engineers, we did



KELLY THOMPSON

## Students Speak Highly Of Building And Arena

By Clair Nichols and Denney Nachand

More important, possibly, than any technical or aesthetic appraisal by experts of Western's new Academic-Athletic Building is the opinion of the student body it will serve.

The general reaction around campus has been largely favorable. Many students expressed satisfaction at the excellent accommodations for athletic con-

tests, the large seating capacity, and the easy accessibility to and from all seats.

The expanded facilities for physical education classes, both activity and lecture, are of special interest to those majoring in this field. Tom Carbotti, junior from Brooklyn, expressed this opinion:

"The fine dressing rooms and auxiliary gymnasium will provide more rooms and generally

improve physical education courses."

Another P. E. major echoed that comment.

"Western has done a fine thing for itself and for physical education," Mike Kenney, senior from West Hartford, Conn. and president of the Physical Education club, said. "This new building will be a great aid in

Continued on page 11, column 1

Continued on page 9, column 1

## WESTERN KENTUCKY STATE COLLEGE BOWLING GREEN, KENTUCKY

OFFICE OF THE PRESIDENT

December 7, 1963

### A Message from the President—

The dedication of the Academic-Athletic Building and E. A. Diddle Arena today will take its place in the history of Western as one of the truly significant events in the life of the College. This special issue of the *College Heights Herald* commemorates this momentous occasion, and I am honored to have this opportunity to direct a personal message to all students, faculty, staff, alumni, and friends of Western into whose hands this edition might go.

This magnificent structure is symbolic of Western's progress and development during a challenging and demanding era. It is a tribute to the contributions which a dedicated faculty and staff, an outstanding student body, loyal alumni, and a host of Western friends have made in many ways.

As I express the appreciation of the College to those who have contributed to its progress and welfare, let me also seek your continued loyalty, support, and constant best wishes. It will be through your help that the College will have the strength to preserve and perpetuate the indomitable Western spirit that has been our sustaining force throughout the years.

To all those who are with us on this dedication day, let me say "Welcome." To the thousands who could not be present but who may read this message, it is our loss that you are not here to help us celebrate a memorable milestone in the life of Western.

Kelly Thompson

## Classroom Shapes Vary From Pie-Shape To Rectangular

By Louatha Banks  
Looking at four walls will never bore Western students who are taking a foreign language in the new Academic-Athletic Building.

Among many other unusual features of the building is the shape of the classrooms. This is brought about by the cylindrical shape of the building.

Dr. Paul E. Hatcher, head of the Foreign Language department, makes this comment on the new rooms: "They vary from pie shape to rectangular to almost square, but the laboratory is the biggest piece of pie down here."

**Language Lab**  
Dr. Hatcher's "piece of pie" is the largest fully-equipped laboratory of its kind in the state. There are 36 soundproofed student booths designed with facilities to listen - respond, record, playback, and communicate. Each booth may be operated individually in order that the student may plan his own practice sessions in the laboratory, or it may be operated conjointly with other booths to receive

a given program from the master console.

The console has five channels which may broadcast simultaneous programs, an all-call arrangement, an intercom system for monitoring and speaking to students, and a means of recording students from the booth to the console. The master console is located at the center front area facing the booths, allowing the monitor to observe the students at all times.

**Visual Methods**  
This year for the first time visual methods for teaching the foreign languages are being used extensively, as have audio-lingual techniques in the past few years. A motion picture is usually shown during each laboratory period.

Another feature of the department is ample supply of storage space for films, books, records, and other materials. Dr. Hatcher feels this is one of the greatest advantages the department obtained in the move from the third floor of Cherry Hall to their present location on

the second floor of the A-A Building.

**Each Language Has Room**  
In the A-A Building each language has its own classroom. This enables the teachers to keep teaching aids for that class at hand. The five classrooms are for German, French, Latin, Spanish, and Russian. There is also a large auditorium for special classes. Comfortable offices are made available for nine instructors in the department.

With all these advantages, Dr. Hatcher won't even hear the noise of the PE or ROTC Departments, which also share the building's facilities.



TWO CONCRETE RAMPS sweeping up from the Russellville Road to the main entrance of the Academic-Athletic Building give the \$3 million structure a graceful appearance from the front. The circular "mushrooms" will provide protection from inclement weather for basketball fans as they purchase tickets from booths located to the right of this entrance.

## Western Joins Nation In Day Of Mourning

Western, like the rest of the nation and the world, was stunned by the tragic assassination of the late President John F. Kennedy, Friday, November 22.

News of the fatal shooting reached the campus while most students, faculty and staff members were at lunch, and many first heard of the tragedy after returning to the campus.

Then, prayerful groups clustered around radios in offices about campus as the final, fatal minutes of the President's life were broadcast to the world. Hopes rose, fell, and then were destroyed by the sombre announcement: "The President of the United States is dead. Let us pray."

A pep rally scheduled for that evening to arouse enthusiasm for the Western-Murray football game the following day was cancelled. A dance scheduled for Friday night in the Paul L. Garrett Student Center was cancelled. Cancellation an-

nouncements were superfluous. The students knew. It was a time for mourning.

Western's final football game had to be played as scheduled the next day, Saturday. Since the Ohio Valley Championship and the Tangerine Bowl at Orlando, Fla. depended on its outcome, the game could not have been easily cancelled.

**Festivities Changed**  
The usual Saturday afternoon football festivities were changed. Dero Downing, Dean of Admissions, delivered an eulogistic prayer prior to the game. Western's band, directed by Mr. Ed Knob, presented a half-time program in memory of the late President. The band played *The Navy Hymn* and *America*, and two trumpeters played a mournful *Taps*.

Western was closed Monday, November 25, a national day of mourning declared by the new President Lyndon B. Johnson.

When classes resumed Tuesday, the flag still hung limply at half-staff. It will remain lowered during the month of mourning.

## Many Music Programs To Be Presented On Stage In Arena

By Joy Collier  
The new and modern Academic-Athletic Building will be the showplace of many important programs during the coming years.

The Count Basie program, scheduled for December 12, will be only the first in a great line-up of entertainment.

Dr. Thomas Stone, head of Western's Music department, said that the meetings of the Kentucky Music Education Association will be the first programs to be presented in the modern structure during 1964. To be held January 9, 10, and 11, these meetings will include

presentations by the All-State Chorus (consisting of from 600 to 700 people) and by two All-State Bands.

The Music department also hopes to have future Community Concerts presented in the new building. Since there has been such a large student turnout to those concerts given in Van Meter Auditorium, it seems wise to change the place of presentation to the larger Academic-Athletic Building.

More and more programs will be scheduled in this building for the entertainment and enlightenment of Western students, faculty, and friends.



40 SOUND-PROOFED BOOTHS are the main feature of the language lab located in the Foreign Language department's section of the Academic-Athletic Building. Students may listen to programs, talk to the instructor, or tape their own voices without interrupting other students in the lab.



MAIN LOBBY . . . Mosaic tile gives the main lobby of the Academic-Athletic Building an eye-catching appearance. Located just inside the main entrance on the second level of the building, the lobby contains trophy cases filled with more than a hundred trophies won by Hilltopper athletic teams during the past years.





ACADEMIC-ATHLETIC BUILDING ARCHITECTS Frank Cain (left) and Ben Johnson (third from left) are shown here going over drawings of the building with L. T. Smith, physical plant administrator, and Raymond L. Cravens, dean of the college (right). Smith was chairman of the president's committee for the planning of the building and Cravens headed the committee in charge of planning classroom facilities.

## A-A Building Is Largest On-Campus Athletic Structure In The South

By Al Stille  
E. A. Diddle Arena ranks as one of the finest, most modern campus athletic facilities in the nation. Its present capacity of approximately 8,500 can be ex-

panded to more than 13,000 without structural alterations. Its ultimate seating capacity is the largest fieldhouse in the Ohio Valley Conference. The Arena is the largest on-campus

athletic structure in the South. Only Freedom Hall in Louisville surpasses its capacity — otherwise the arena would be the largest building of its type in the South.

Freedom Hall, site of the 1963 NCAA Tourney, seats 17,865 and is state-owned. The Memorial Coliseum at the University of Kentucky holds 11,500, for athletic and entertaining programs.

The Owensboro Sports Center, home of Kentucky Wesleyan, has a capacity of 8,000.

Eastern's Alumni Coliseum was dedicated December 4, and seats 6,500. The Richmond building also houses a swimming pool and classrooms.

The Diddle Arena has several advantages over many of the South's finest basketball halls. Its circular design will enable spectators in the top row to view the activities without obstruction. The portable goal posts can be removed for special performances. Its circular design is also unique.

The increased capacity should open the way for the Hilltoppers to schedule a more attractive intersectional hardwood program than in the past.

## Underground Phone Lines Installed In Arena Area

by Malcolm Kidd, Jr.  
Walking on cables is not unusual for the student at Western today. The Southern Bell Telephone Company has taken poles and cables down along the Russellville road from the under-pass to the Morgantown road. These cables were laid underground and a side-walk constructed over them as a part of the project to beautify Western's campus.

Southern Bell Telephone has installed eight pay stations at various areas in the Academic-Athletic Building. In addition to these pay stations, they have installed eight automatic switch board stations. These are used when

dialing from anywhere on the Hill to the A-A Building without the help of an operator.

As well as these systems, they have installed separate intercoms in the P. E. and ROTC departments.

The centrex system is now being negotiated for Western according to C. B. Talbert, Manager of Bowling Green Southern Bell office. The centrex system will enable one to dial in or out of this zone without the assistance of an operator.

There are forty-eight colleges throughout the United States which have this system. Murray is the only one in Kentucky with this system at the present.

## Arena Hardwood Presents Clear Spectator View

By John Steinrock  
No matter where you sit, your view of the playing floor in Western's E. A. Diddle Arena will be unobstructed. There are no inside supporting columns. Termed a modified bicycle wheel-type, the roof is supported by light trusses and cables. Add 1 1/2 inches of rigid fiber insulation topped with a petroleum product coating and glass fibers and you have a roof that protects sports enthusiasts from the harsh realities of nature.

The unusual roof structure was designed by John R. Wilkie, an Evansville, Ind. engineer, who has done design work on all new buildings at Western during the past five years. Wilkie has applied for a patent of the roof framing.

Frank Cain, architect, said there are several long span buildings in existence having similar principles, but that none have exactly the same type of roof.

The roof design was first constructed as a scale model by

architect Cain. He then had a working model constructed, testing that the roof would meet requirements satisfactorily.

In the center of the roof structure are two steel rings 50 feet in diameter, one being 30 feet above the other. These form the hub of the wheel. Radiating at 10 degree intervals from the top of the hub are the trusses, weighing five tons each, 136 feet long, 8 feet high, and 10 inches across. Below each truss are a pair of 1 1/2 inch pre-stressed suspension cables that serve as ties between the bottom of the hub, or central ring, and the ring girder at the rim of the building. The rim is supported by concrete columns, 54 feet high, which are a part of the outer wall of the arena.

The trusses are pitched 10 degrees to drain the roof toward the perimeter of the building. The building is ventilated through louvers in the upper wall of the hub where it projects four feet above the supporting trusses.



COACH E. A. DIDDLE takes time out from watching a practice session in the Arena to discuss this year's basketball outlook with Herald editor Doug Verdier and assistant editor Sandra Stuart.

CONGRATULATIONS TO E. A. DIDDLE AND WESTERN FOR A WONDERFUL ARENA!



All Kentucky Recognizes The Opportunities Offered By This Wonderful New Facility In The Pursuit Of Educational, Cultural, And Athletic Achievement.

*We Are Proud To Be Able To Serve The Faculty, Staff And Students Of Western*  
*We Salute You On Your Accomplishments.*

# AMERICAN NATIONAL BANK & TRUST COMPANY

MEMBER FEDERAL RESERVE AND FEDERAL DEPOSIT INSURANCE CORP.

Main Office 922 State St.  
Bowling Green, Ky.

Main Office Drive-In  
Enter From Tenth St.

924 Broadway Branch  
Bowling Green, Ky.

Smiths Grove Branch  
Smiths Grove, Ky.

(Safe and Friendly Since 1886)



# College Heights Herald

The College Heights Herald is the official newspaper of the Western Kentucky State College. It is published every Wednesday during the school year under the general management of Robert Cochran. The staff is composed of students of the journalism classes taught by Miss Frances Richards.



REPRESENTED FOR NATIONAL ADVANCEMENT BY  
National Advertising Service, Inc.  
College Publishers Representative  
420 MADISON AVE. NEW YORK, N. Y.  
CHICAGO BOSTON LOS ANGELES SAN FRANCISCO

NATIONAL EDITORIAL  
ASSOCIATION  
MEMBER

Award Medalist (highest) Rating 1942-49-51-52-53-54  
by Columbia Scholastic Press Association,  
Columbia University.

Member Kentucky Press Association

## STAFF

Editor in Chief ..... Douglas L. Verdier  
Assistant Editor ..... Sandra Stuart  
Advertising Manager ..... Larry Dykes  
Advertising Assistant ..... Colleen Riley  
Sports Editor ..... Larry Dykes  
Photographer ..... Frank Ashley

## EDITORIAL ASSISTANTS

Bob Adams, Karen Durbin, Reed Morgan, Carol Reckner, Finley Willis.

## REPORTERS

Judy Averitt, Demaris Baker, Louatha Banks, Sharon Beak, Diane Beard, Stan Billingsley, Randall Bewing, Tommy Muriya Drury, Jim Dykhouse, Freda Ellis, Paul Fannestith, Lee Jay Collier, Tom Cook, Pat Counts, Earl Devine, Wayne Divine, Ann Ford, Pat Franklin, Estil Griffin, Gene Haskett, Dana Hicks, Jerry Hobgood, Larry Houston, Lavelle Huddleston, Lowell Isaac, Penny Kendall, Malcolm Kidd, Thomas Kirkpatrick, Ed Lawrence, Theresa Ling, Allen Logsdon, Bill Luster, Phil Mages, Ted Mason, Jim Medley, Victor Morrison, Neil Myers, Danny Nechland, C. J. Naff, Frances Nelson, Bob Newsome, Clair Nichols, Bill Purdie, Bobby Jo Paris, Carolyn Pelly, Doris Pendleton, Mason Ploch, Ralph Price, Jimmy Reed, Roger Richardson, Mike Ridge, Sue Robertson, Jackie Roper, Steve Rowe, Don Ross, Paul G. Simpson, Buell M. Snyder, John Steinrock, Phil Stewart, Al Stille, Harry Summersville, Libby Thompson, Jane Trevathan, Sue Tucker, Al Young, Jim Vanover, H. W. Williams, Bobby Zachary.

Entered at the Post Office as Second  
Class Mail Matter

Subscription Rate ..... \$3.00 per year

Bowling Green, Kentucky, Saturday, December 7, 1963  
Volume 43 No. 9-2251

## Students Feel Loss.....

The deep sense of loss felt by the entire world after the death of President John Fitzgerald Kennedy was perhaps felt more strongly by college students than by any other group.

Young people across the nation, regardless of political affiliation, felt a sense of exhilaration just less than three years ago when the new President delivered his now-famous inaugural lines: "Ask not what your country can do for you—ask what you can do for your country."

The leadership of the world was passed that snow-swept January day to a generation not far removed from ours and we sensed it. We sensed it in the ringing phrases of the inaugural address and in the striking juxtapositioning of this vibrant young man alongside aging Presidents Eisenhower and Truman.

We had thought of the national government as something remote from us, from our problems and aspirations; as old, sometimes stodgy, men moving sedately through Washington. Then, suddenly, in one day, there was a dramatic transformation. Young, brilliant, vigorous people appeared on the scene. It was a young man who made the decisions, and who, like all young men will do, also mistakes. This we could understand.

We felt that now we were governing and we asked just what we could do for our country. We learned. We could join the Peace Corps; we could participate in sit-ins and "freedom marches"; we could work in voter-registration drives in Mississippi. Yes, we could even hike for 50 miles and that, too, seemed somehow to be doing something—to be a part of the new excitement emanating from the White House.

Now the man who generated the national excitement is no more. But the causes for which he and we fought remain. Perhaps from the solemnity of his tragic death as from the vitality of his life, we students can learn. Perhaps we will never return to the remote complacency we have shown in the past while students in other lands were leading revolutions, over-throwing tyrants. Then, President Kennedy will have given us something no assassin can destroy.

## DEDICATION PROGRAM ACADEMIC-ATHLETIC BUILDING and E. A. DIDDLE ARENA

December 7, 1963

Presiding

Dr. Kelly Thompson, President

AFTERNOON PROGRAM

1:30 o'clock, P.M.

Academic Procession:  
Pomp and Circumstance ..... Elgar  
Western Brass Ensemble, Mr. Bennie Beach, Director  
Choral Invocation—The Lord's Prayer ..... Malotte  
Western Choir, Mr. Ohm Pauli, Director  
Introduction of Platform Guests

Remarks:  
Representing the Western Student Body ..... Mr. Carson Culler  
Member, Senior Class  
Representing the Western Faculty ..... Dr. Willson E. Wood  
Head, Department of English  
Representing the Western Alumni ..... Dr. Merrill W. Schell  
President, Alumni Association  
Representing the Western Board of Regents Mr. Maxey B. Harlin  
Member, Board of Regents

Musical Number—Alleluia ..... Randall Thompson  
Western Choir

Introduction of Speaker ..... Dr. Raymond Cravens  
Dean of the College

Dedicatory Address ..... The Honorable Bert Combs  
Governor of Kentucky

Choral Benediction ..... Lutkin

A cordial invitation is extended to those who wish to tour the building where open house is being observed until five o'clock. The Dedication Program will be resumed at six-thirty o'clock in the E. A. Diddle Arena.

## EVENING PROGRAM

6:30 o'clock, P.M.

Organ Concert—6:00 until 6:30 o'clock ..... Mr. Claude Rose  
Organist

National Anthem and ..... Flag Raising Ceremony  
Soloist, Jeanette Rider Sallee  
Pershing Rifle Color Guard

With Participation Of:  
The Western Choir ..... Mr. Ohm Pauli, Director  
The Western Band ..... Mr. Edward Knob, Director  
The Community Chorus ..... Dr. Thomas Stone, Director

Introduction of Platform Guests

Greetings ..... The Honorable Wilson W. Wyatt  
Lt. Governor of Kentucky

God Bless America ..... Irving Berlin  
Band, Chorus and Choir

College Heights ..... Jeanette Rider Sallee  
Frances Bradley

Vanderbilt University ..... versus Western Kentucky State College

Half-time Ceremonies Honoring Coach E. A. Diddle

Conducted by the Western W.-Club

## Fans Receive Two Special Dedication Publications

by Diane Beard

The audience at the dedication of the Academic - Athletic Building will receive two publications. The special dedication issue of the College Heights Herald and a 24 - page souvenir program.

The Herald, assembled by its staff and journalism students, will cover all phases of the building of the A-A Building in both articles and pictures. Public opinions of the building will also be included.

The color brochure containing the program of the proceedings will be passed out at the dedication game and at the dedication ceremony to be held earlier this afternoon. A mail distribution will include alumni and those interested in Western or the building.

The program will have a full page color picture of the A-A

Building on the front cover. The president's welcome will also be included in the first few pages.

The brochure will be a complete history of the Academic-Athletic Building. It will include photos of the building in every stage of its completion, interior completed classrooms, auxiliary gym, main arena and architect sketches of upper and lower floors.

A biographical sketch of Coach Diddle will also be covered. The brochure is so detailed that it will contain all of the past gyms which Western has had beginning with the "Red Barn."

Although the brochure is published by the college, it will be sponsored by advertisements.

The brochure as well as the Herald, will be a publication to keep as a souvenir.

## HILLTOPICS

by DOUG VERDIER

## Hilltopic

The major topic on the Hill this week is, of course, the dedication today of the \$3 million Academic - Athletic Building and E. A. Diddle Arena.

A full day of activities has been planned, with the dedication officially set to begin at 1:00 p.m.

Governor Bert Combs will deliver the dedicatory address during the afternoon program, and Lt. Governor Wilson W. Wyatt will be the featured speaker during the evening program, which is scheduled to begin at 6:30.

At the conclusion of today's activities, Western will have officially added the largest, most expensive, and most versatile building to a growing list of improvements made to the college campus over the years.

The name, Academic - Athletic Building, is appropriately chosen, as it announces the dual purpose of the huge, circular structure. Three major departments of the college are housed within the building around the main feature of the plant—E. A. Diddle Arena. The thirty master classrooms, offices, and storage space greatly increase the usable teaching space of the college.

The Arena itself has already been recognized as one of the largest and finest basketball arenas in the South, surpassed in seating capacity only by Freedom Hall in Louisville. The tremendous size of the Arena will permit more persons to attend major sports events at Western, as well as the cultural entertainment programs which will be held there.

Count Basie and his orchestra have already been scheduled to perform in concert in the Arena December 12—just five days from now!

Perhaps the most valuable feature of the A-A Building is a more intangible one. The huge, majestic building symbolizes in a way the progressive spirit of the college constantly striving to provide Western students with the opportunities to achieve educational excellence.

## Hilltopic

The dedication of the Academic - Athletic Building and E. A. Diddle Arena was considered such a milestone in Western's history, that the staff of the College Heights Herald decided to publish a special Dedication Issue dealing strictly with the new building and the people who made it a reality.

This 16 - page Dedication Issue marks three significant "firsts" in Herald history.

Today's publication marks the first time an "extra" has ever been published by the Herald.

For the first time in the Herald's 38 - year history, color is being used in the printing process. The staff felt that the red and white appearance of the front page was especially suitable for the occasion.

And finally, the Herald's circulation record reached a new high today as 10,000 copies were printed for free distribution in the A-A Building following today's dedication. Copies will also be mailed to all major news outlets in the nation as well as to other colleges and Western alumni.

## Roamin' Thoughts...

By Libby Thompson

Every Western student points to the Academic-Athletic Building with pride, but in the back of his mind he is probably thinking: "I can't wait to get into that heated pool." The pool is well - equipped and waiting for just these students. (So are the classrooms, but we won't mention this fact.)

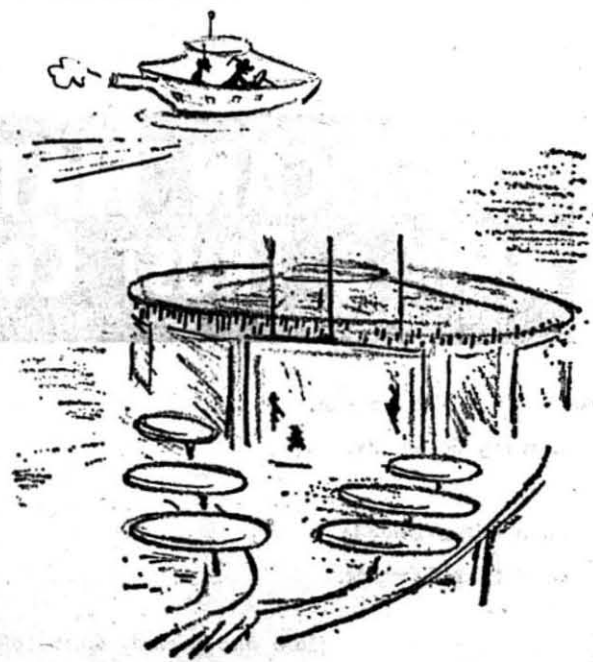
For the toe-dabblers, the water is five feet deep at one end; for the more daring, the deep end is twelve feet deep. The pool is seventy-five feet long and fifty feet wide, with a capacity of 330,000 gallons. For the amateur skin-divers, eight pool lights illuminate the bottom, with ten lights over the top.

There are spectator seats at either end with bleachers in-between on one side for swimming meets or for boys whose PE class consists of watching the girl's PE classes. The walls are pale blue with one wall in brown, white, and blue checked tile. The pool will be opened soon so if you haven't already done so, get your swimsuits out of mothballs and dive in.

The next statement that pops out of a student's mouth is "I can't wait for that first basketball game." The red and white seats certainly carry out that Hilltopper spirit! The total capacity is listed at 8,500 presently.

No doubt this red and white atmosphere will inspire even more cheering than ever shook the rafters of the Old Red Barn. And yet, even though the new gym will soon be as familiar to us as the old one is, we leave it with a note of nostalgia.

But we know that the red towel will still wave in Diddle Arena. Perhaps it will not be so unfamiliar after all, for to Diddle Arena will be carried three important things: our school spirit; our winning team; and the famous red towel.



"Man, these new models get bigger every year."





**ORIGINAL "OLD RED BARN"** . . . The expression "old red barn" has been used for a number of years in reference to Western's Physical Education building, but what many people do not know is that Western's first goal-hall actually was an old red barn. At one time the building served as a dormitory for women.

## 'Red Barn' Was Impressive When Dedicated In Feb. 1931

By Jane Trevathan  
For the past 32 years the Old Red Barn has been the scene of some of the nation's greatest basketball games, and it has been partial proving ground for the "winningest" coach in basketball history.  
Its services in this respect have ended, but the structure will continue to serve Western. According to present plans the old gym will be enlarged and reconstructed to serve as main library for the college. Providing more than four times as much space as in present use, the new library will provide 70,000 square feet of floor space.

and shelf space for approximately one-half million volumes.  
**Has Colorful History**  
The Old Red Barn has a colorful history. It should be noted that when this structure replaced the original old red barn, it was then as much a symbol of Western progress as the new Academic-Athletic Building and E. A. Diddle Arena is today.  
To the fans who crowded the building for its dedication in February, 1931, it was a pretentious sight to behold and in Western tradition for a successful dedication, the Toppers defeated Georgetown College in that dedication game, 41-24.

## Dedication Ceremonies, Game To Be Televised

By C. J. Naff  
Western's Hilltoppers will become television performers on December 7 as Bowling Green's WLTV channel 13 broadcasts the opening game in the E. A. Diddle Arena.  
Jack Newman, program director for the local station, announced that the station will carry the complete dedication day program, including the evening dedication of the E. A. Diddle Arena, and the Western-Vandy basketball game. Tentative plans are to broadcast several other home games from the arena.  
Radio, too, will play an important part in transmitting the toppler games.  
Prompt and accurate coverage of Western's basketball games has been made as easy as possible for everyone covering them. Suggestions of the reporters and broadcasters themselves have been incorporated into the design of the working area, which meets all standards recommended by the Basketball

Writers of America.  
**Press Tables**  
For the sports writers there are press tables equipped with telephones along one side of the court. Directly across the court are separate facilities for radio and television announcers, with provisions for the variety of equipment necessary for the immediate broadcasting of game descriptions. There too, the announcers will be removed from the distractions of the stands.  
At game's end there is a press room under the stands and just off one end of the playing floor, for the sportswriters. There are trade-desks, typewriters, telephones, and teletypewriters will facilitate the writer's task of carrying Western's game activity to the public.  
So, for those of you who cannot attend each of Western's games in person, the press facilities provided in the new Academic-Athletic building make it practically "impossible" for you not to hear the triumphs, and defeats of the Hilltoppers.

## P. E. Majors Anticipate Move To New Home

By Diane Beard  
Physical education majors and minors at Western are anxiously awaiting the day when they can begin classes in the new Academic - Athletic Building.  
The importance of this building is probably felt stronger by this group than any other on the Western campus. This is the group which will get the most actual use from the new facilities.

Most of the majors, questioned at random, are extremely proud of the structure and consider it a long needed improvement. Lorraine Thomas, sophomore, secretary of P. E. M. (Physical Education Majors), says "It's unique. It offers the majors a lot of opportunities they did not have in the old gym. It will probably increase the number of majors."

Besides the benefits to the physical education majors, there are others, as expressed

by Ann Lee Revlett. "It will add a great deal to the entire program of the school, especially to the physical education program."

The new building will also be an asset to the basketball teams. From its dedication day until it too becomes outmoded, it will be the "home" of our Hilltoppers. One major added, "It is a structure that head coach E. A. Diddle is well deserving of." This last statement was in reference to the arena to be dedicated to Coach Diddle.

At the dedication of the Academic-Athletic Building when hearts are full of pride, the physical education majors will beam a little more, for this is a personal achievement to them.

**SUPPORT THE HILLTOPPERS**

**Congratulations To ED DIDDLE And All Western Personnel**

FROM **Lowe's** SPORTS HWDE. PAINT CORNER STATE AND TENTH STREETS

May The New E. A. DIDDLE SPORTS ARENA become as famous as "The OLD RED BARN"

We were present at the dedication FIRST GAME and LAST GAME in The RED BARN.

BUY THE BEST! BUY **Wilson** Sporting Goods at the HERMAN LOWE CO.



**Penneys**  
ALWAYS FIRST QUALITY

**WE ARE PROUD TO EXTEND OUR CONGRATULATIONS**

TO

**ED DIDDLE AND WESTERN**

ON THE COMPLETION OF THE

**NEW ACADEMIC-ATHLETIC BLDG.**

J. C. PENNEY COMPANY

911 College

**BEST OF LUCK**

In The 1963-64 Basketball Season

In The New

**E. A. Diddle Arena**

From Your

**FORD DEALER**

**Wallace Motors, Inc.**

601 STATE STREET





BEFORE . . . This is how the present site of the A-A Building looked before construction began on the 16 acre tract after ground-breaking ceremonies Nov. 15, 1961. The view is to the south, approximately parallel to the Russellville Road.

## 336 Wins And 38 Losses Was Record In 'Barn'

By L. K. Isaacs

An ancient building seating approximately 250 persons was the home of Western's first E. A. Diddle coached cage team in 1922. As the team's success grew under the guidance of Coach Diddle, its popularity with fans outgrew its facilities.

During the 1930-31 season Coach Diddle moved his squad into a modern, new home. The new building, which seated about 4,500 spectators, far more than the infant sport at most schools would draw, was one of the most magnificent gymnasiums in the South.

Coach Diddle's basketball machine smashed the Tigers of Georgetown College February 9, 1931, by a score of 41-24 to strengthen its hold at the top of the Southern Inter-Collegiate Athletic Association. Blain Coffman and Team Captain Turner Elrod were high-point men for the "Red and Gray" with 11 points each. The game marked the opening of the Physical Education building.

### Dedication

In opening-game ceremonies President Henry Hardin Cherry emphasized that the formal dedication of the structure would not take place until next Homecoming in October, 1931. At that time a mammoth three-day program featuring Western's 25th Anniversary would take place.

Sandwiched between the opening 41-24 victory and the final 80-79 loss to East Tennessee was a total 336 won - 38 loss home record.

Western teams were not beaten in the gymnasium from February 5, 1949, until January 10, 1955. This streak consisted of 67 consecutive home wins; Xavier of Ohio broke the streak with an 82-80 victory.

Scores on the hard wood rangec from an 122-78 Western victory over Eastern (total-high 200 points) January 16, 1954, to a Western 12-Morehead 4 (total low score) win in the KIAC semi-finals in 1935.

## Coach Sinks 1st Goal In Diddle Arena

Veteran coach E. A. Diddle had the honor of officially christening the new arena which bears his name by sinking the first basket ever made in the 8,500 seat goal-hall on November 17.

Although the colorful coach sank the first basket, his first shot will go into the record books as a miss — but that wasn't his fault.

When the ball missed the mark, technicians made a quick check of the removal goal and discovered it to be two inches too low.

The goal was adjusted, and moments later the man who made the red towel famous sank the first basket and officially opened the Arena to the Hilltoppers for practice.

The greatest number of points scored by Western was 123 against Union (Tenn.) College, December 3, 1959.

Art Spoelstra, with 52 points against Morehead December 12, 1953, holds individual scoring honors.

In the 32 years that Western teams participated in the home

arena, they won or shared 11 OVC championships; won 13 KIAC championships; won eight SIAA championships; produced 12 All-America, 16 All-OVC, 25 All-KIAC, and 24 All-SIAA players.

### Big Years

The big years were 1933-34

Continued on page 13, column 1



MILITARY SCIENCE CLASSROOMS are housed in the Academic-Athletic Building. One unique feature of all classrooms in the building is that, due to the circular design of the building, none of the rooms are square or rectangular; most are somewhat pie-shaped. Lt. Col. Grover G. Smith, professor of military science, here instructs a class in military history.

## All The Way "Big Red"

Best of luck to Coach Ed Diddle and his staff.

From,

## Western Hills Restaurant

"Just 2 Blocks West of Campus"

JUNCTION OF U. S. 231 AND 68

Jim Taylor, Manager



First Federal Savings and Loan Congratulates Western and its Famed Coach, Ed Diddle, on their great program of progress.

## Go Western, Go!

Your Pride In Your New E. A. Diddle Arena and Academic-Athletic Building Is Shared By All Of Us At . . . . .



## FIRST FEDERAL SAVINGS AND LOAN ASSOCIATION

551 E. Tenth St. VI 2-0366  
Bowling Green, Ky.

North Main St. 586-4423  
Franklin, Ky.



ORGANIST at all Western basketball games will be Leroy Warf, transfer from Lindsey Wilson. Claude Rose, member of the Music department, will present a selection of music on the new Hammond organ this evening from 6 to 6:30.

## Electric Concert Organ Makes Its Debut Tonight

By Doris Pendleton

The sound of music will usher in Coach E. A. Diddle's 42nd year as head basketball coach at Western.

The music will be coming from a brand-new Hammond electric organ, a self-contained concert model, which has been purchased recently by the school.

### Claude Rose To Play

Mr. Claude Rose, member of the Music department, will render a selection of music on the new organ this evening from 6 until 6:30, at which time the dedication of the new arena will take place. He will also be the accompanist for the National Anthem before the commencement of the Western - Vanderbilt game.

Installed November 20, the new organ rests on a platform of its own. The platform has rollers, so that the organ can be brought out onto the gym floor when desired. It has a walnut finish.

### Theater-Type Organ

According to Mr. Rose, the organ has two manuals (keyboards) and a full set of pedals, conforming to standard specifications. He said, "It has special novelty percussion effects and is typical of the theater type of organ. It is capable of playing both serious and popular music."

Mr. Rose explained that the instrument differs from most organs in that the tone in the electric organ is produced synthetically, or electronically, whereas the tone in an ordinary type is produced by the wind rushing through the organ pipes. It also contains electric drawbars, instead of the regular knobs, which change the tone according to the theory of harmonics.

### Self-Contained Speakers

Most important, however, is the fact that the new Hammond contains speakers which are built into the console itself, whereas a regular electric organ is hooked up to speakers which transmit the music. The music from the new organ will be piped through the PA system.

The organ, which will be played at all athletic events, was selected after several types of electric organs were tried out. "The choice was made," said Mr. Rose, "on the particular use to which the organ will be put in the new arena. It is the largest model of its type."

Leroy Warf, transfer from Lindsey Wilson, will play the organ for all basketball games.

The Hammond is the second electric organ on campus. The other, a Conn model, is located on the second floor of Van Meter Auditorium.

# Coach Diddle's Career Marked By Previous Important Occasions

By Doris Pendleton

E. A. Diddle's coaching career of 42 years has been marked by many memorable events. One of the most important of these occurred on the night of January 6, 1960, when over 5,000 persons gathered in Western's gym to celebrate Coach Diddle's 700th win.

This milestone had been reached a week before, on December 30, 1959, when the Hilltoppers defeated Tulane University 71-67 at New Orleans to capture the Sugar Bowl trophy.

The night of January 6 proved to be doubly significant, for Western beat DePaul University of Chicago 86-56 to earn Coach Diddle his 701st win.

At the Western - DePaul post-game ceremonies, Coach Diddle received many honors. One of the featured speakers of the evening, Lt. Gov. Wilson Wyatt, presented him with a basketball autographed by all the members of the Kentucky Legislature. He also read aloud a proclamation issued by Governor Bert Combs, proclaiming January 7, 1960, as "Ed. Diddle Day" in Kentucky.

### Receives Cake

Eck Branham, "W" club president, presented Diddle with a cake bearing the 700th win inscription. The towel-tossing coach also received from Charlie Ruter, president of the Alumni Association, a huge picture of him accepting the Sugar

Bowl trophy at New Orleans. Assistant Coach Ted Hornback had the honor of presenting Diddle with the Sugar Bowl trophy, which he turned over to President Kelly Thompson.

Mrs. Diddle was presented with a bouquet of red roses by L. T. Smith, chairman of Western's Faculty Athletic Committee.

### Guests Listed

As part of the ceremonies, more than 40 of Diddle's former players were introduced to the crowd. They were presented according to their membership in an era of wins for Coach Diddle. Included among those many distinguished guests were:

1-100 (1923-1933) — M. M. Botto, Carrol Broderick, Dick Bryant, Dr. Tom Hobbs, Wendell Johnson, W. B. "Sarge" Qwen, Eddie Ward, B. J. White.  
100-200 (1933-1937) — Harry Hardin, Bemis Lawrence, John McGown, Brad Mutchler, Hugh Poland, Max Reed, Wilson Stemm.

200-300 (1937-41) — Ralph Dudgeon, Harold McGuffey, Billy Gray Robinson, Harry Saddler, Carlyle Towery, Jed Walters.  
300-400 (1941-45) — Billy Day, Alex Downing, Dero Downing, Dr. Deacon Jones, Charlie Ruter, Buck Sydnor.

400-500 (1945-50) — Jimmy Bohannon, Dr. Carrol Brooks, Dr. Chambers Embry, Dee Gibson, John Givens, Jim Hut-

er, Bill Kirk, Don Ray, Odie Spears.

500-600 (1950-54) — Monte Beard, Ed Diddle, Jr., Dan King, Dick White.

600-700 (1954-59) — Forrest Able, Eric Back, Billy Case, Ronnie Clark, Bob Daniels, Jerry Whitsell.

### First Captain

One of the guests was W. B. "Sarge" Owen, captain of the first team which Diddle ever coached at Western.

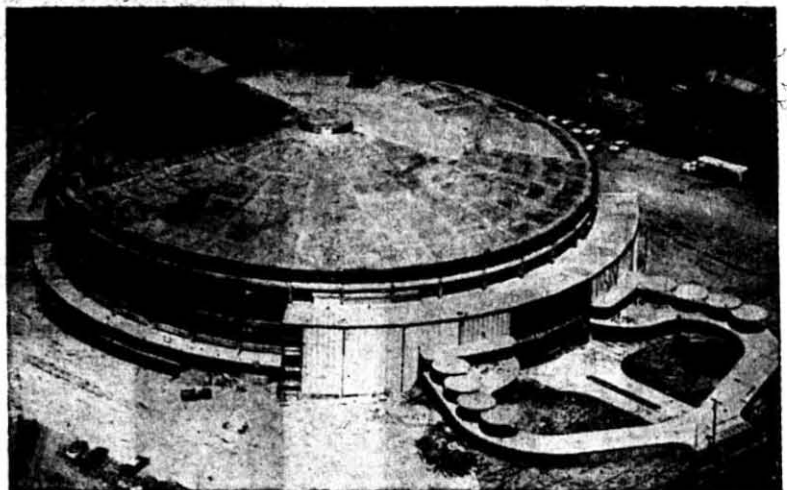
The combo which produced Diddle his 700th win received much acclaim. Members of that famous team were Charlie Osborne, Harry Todd, Bobby Rascoe, Al Ellison, and Don Parsons. Rascoe was voted the "Most Valuable Player" in the Sugar Bowl.

### "Best Night Of All"

Coach Diddle, the guest of honor, seemed quite happy with all the awards. "This was the best night of all," he said.

The famed coach's triumph at the Sugar Bowl marked his 700th win in fewer than 950 starts and 38 years of coaching. This singular achievement at one school stands unequalled in the coaching profession. Only one other coach can boast of such a "winning" career, but his victories were compiled at four schools. The famous "Phog" Allen of Kansas retired

Continued on page 10, column 5



GO-TOPPERS-GO

Always Boosting

**WESTERN**  
**Radio WKCT**

KC 930 KC

- ★ ABC NETWORK
- ★ STRONG LOCAL NEWS
- ★ BALANCED PROGRAMING
- ★ APPEALING TO THE YOUNG ADULT

RADIO

930  
KC

**WKCT**

930  
KC

We Extend Our

Sincere Best Wishes

To E. A. Diddle And The  
Staff And Students At Western

On Their New

E. A. Diddle Arena





# BROWN'S ALL STAR DAIRY FOODS SALUTES WESTERN'S PAST ALL-AMERICANS



BOB  
RASCOE  
1962



TOM  
MARSHALL  
1953-54



ART  
SPOELSTRA  
1953



RIP  
GISH  
1951



JOHNNY  
OLDHAM  
1949



ODIE  
SPEARS  
1948



Coach Diddle



BOB  
LAVOY  
1950



DEE  
GIBSON  
1948



DON  
RAY  
1948



ORAN  
McKINNEY  
1943

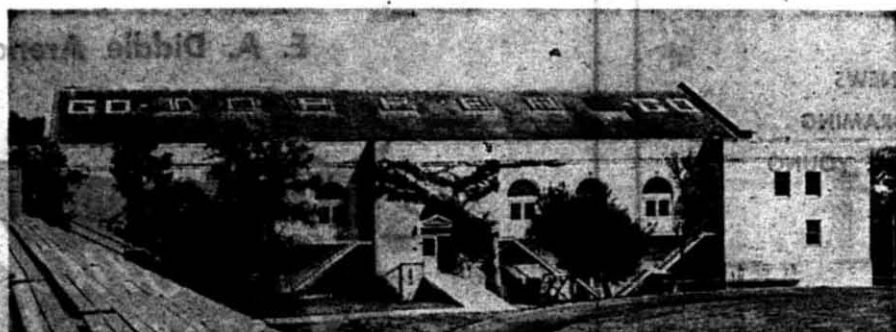


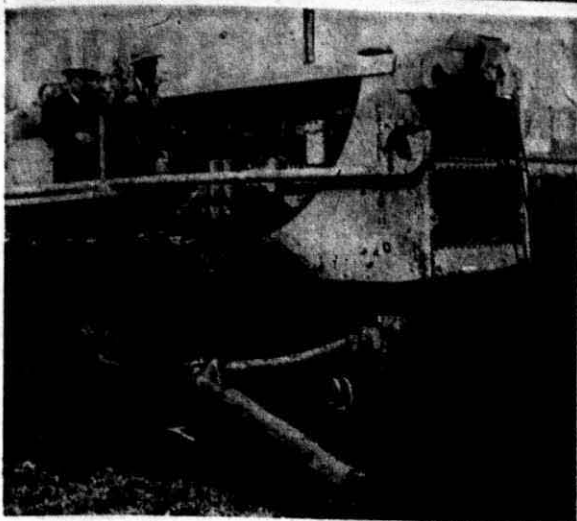
CARLYLE  
TOWERY  
1940-41



WILLIAM  
McCROCKLIN  
1938

## A TRIBUTE TO THE "OLD RED BARN"





GROUND-BREAKING CEREMONIES for the Academic-Athletic Building were carried out with a bulldozer rather than the traditional shovel. Behind the throttle of the big "cat" are Western president Kelly Thompson and Coach E. A. Diddle. Groundbreaking was held in conjunction with Founders Day in November, 1961.

## Diddle Drives Dozer As Band Plays 'Dixie'

by Louatha Banks

"Let's move some good Western earth." The command was given. A bull dozer with E. A. Diddle at the throttle churned across the turf and the Western Band played "Dixie."

This was the scene, November 15, 1961, of the ground-breaking ceremony for the \$3 million Academic-Athletic Building, just 19 hours after the contracts had been signed in Frankfort.

Approximately 1,000 students and townspeople jammed the site for the Founders Day Ceremony in spite of a misty rain. The program was held in conjunction with the annual observance of the birthday of the col-

lege's founder, Dr. Henry H. Cherry.

Speaking from a make-shift platform of truck beds, Western President Dr. Kelly Thompson said the completion of the building would "open up undreamed-of opportunities" for Southern Kentucky.

Due to weather conditions, the scheduled program was cut short. The only other speaker was Coach Ed Diddle, who said the building would climax a 39-year-old dream for him. That's how long he had been Western's basketball coach in 1961.

Besides students and townspeople, those present included state officials, town and college officials.

## "A Fabulous Facility" Says Thompson

Continued from page 1

not call them and ask them for something. The idea for what we wanted was born right on this campus and anybody who was to be associated with it was called on for advice and put on a committee."

### Building Is Unique

"There is possibly no building of this kind in the entire South which has had more comprehensive planning. The General Committee, or the Steering Committee of the General Committee, met with the President, the architects, and officials of the Division of Engineering in Frankfort throughout an 18-month period," President Thompson said.

Concerning the expense of the structure, the President related that, "The cost of the building, when the parking and grading is completed, will be approximately \$3 million. The building is financed through an issue of 'Consolidated Educational Buildings Revenue Bonds.'"

To Seat 9,525 Tonight  
Although the new building will

accommodate approximately 8,500 people presently, it has been arranged for the seating of 9,525 spectators on the special dedication night.

President Thompson went on to say, "The building will not only provide for accommodations for three academic departments, but will open up a new era in athletics. It will also provide opportunities for cultural and entertainment events, ranging the full scale of these activities."

The President assures us that there will be ample parking space because the building is located in the midst of a 12-acre tract of land, nearly all of which isn't occupied by the building, will be set aside for parking.

President Thompson concluded, "This is basketball country, you know, and now we not only have a building to hold basketball crowds, but one that will serve in so many ways every day of the week. It houses 30 classrooms. I'm convinced you'll see more and more circular buildings in the future. There is absolutely no wasted space."



OCTOBER, 1962 . . . This picture of Western's \$3 million Academic-Athletic Building was taken from the top row of the partially completed bleachers in the corner of the building nearest the Western tennis courts. The clearing below is the site of the basketball court.

# A-A Building Houses Assortment Of Physical Education Facilities

By Denny Machand

Spacious new physical education facilities unlock at Western as the new Academic-Athletic Building opens. A swimming pool, an auxiliary gym, first aid room, equipment room, and other necessary accommodations are provided. Last but certainly not least, is the main arena, appropriately named in honor of the man who has contributed so much to the growth of Western, Coach E. A. Diddle.

The building is built around its main attraction, E. A. Diddle Arena. It houses not one, but three basketball floors. The main floor runs the length of the gym and two secondary floors run the width, providing enough basketball area to play two full court games at once. The main is outlined by four badminton courts and crisscrossed by four others. Also, on the main part of the floor, there are two volleyball courts, thus providing a variety of activities on this floor alone.

### Auxiliary Gym

In addition to the main gym, the auxiliary gym has its share of lines on the floor, providing adequate space for the various activities for which it is designed. Located at the back of the building, the auxiliary gym, with its maze of lines, provides room for four more badminton courts, one more volleyball court, and a nice size basketball court. Also located in

the auxiliary gym are four one-wall handball courts. Rooms at either end are to be used for wrestling, gymnastics and other activities. Combined, the two gym floors in the building offer four basketball floors, three volleyball courts, twelve badminton, and four handball courts, providing adequate facilities and room for everything and everybody.

### Swimming Pool

Located in the front of the building is another of the main attractions, an olympic-size swimming pool. The pool is 42 feet wide and 25 meters long. The water depth runs from five feet at the shallow end to twelve feet at the deep end under the two one-meter diving boards.

Seats for spectators are located between the front of the building and the pool. Seats are also at either end and can be

used for class rooms. Pool area is tiled in blue and white, making it not only practical but attractive.

Centrally located amidst these three main areas of activities is the equipment room. This room contains the needs of all and the directions to everywhere especially directions to the first aid room with its whirlpool bath, tables, and every day first aid equipment.

Fourteen hundred and seventy lockers are provided for men and women with ample shower facilities for all. Nine hundred of these lockers are ear-marked for the men with the remaining five hundred and seventy to be used by the women. Adequate space is provided for all physical education activities and classes in this magnificent, new and modern structure on the Western campus.



TWO AUXILIARY BASKETBALL COURTS are located in the lower level of the huge A-A Building, thus providing ample space for intramural games and other P.E. activities.

## SUPPORT THE HILLTOPPERS

Best Wishes From Your Friends at

*Citizens*

**NATIONAL BANK  
OF BOWLING GREEN**

DOWNTOWN, PARK ROW  
LAUREL AVENUE BRANCH  
TENTH STREET AUTO BANK

"We are here to serve all your  
banking needs."

Congratulations And Best Wishes

TO

Western Kentucky State College

AND TO THE

1963-1964 Hilltoppers

On The Opening Of Their New

E. A. Diddle Arena

400 E. Main  
Bowling Green, Ky.

*Pushin's*

Store Hours  
Fridays 9-9  
Other Days 9-5



# Coach Diddle Is Living Legend

## Loved For His Ability, Color And Humanness

By Joe Creason, Courier-Journal Staff Writer

It isn't often that a man becomes a legend in his own lifetime. Yet this is the enviable status that has been attained by the best known and best loved citizen of Bowling Green, Ky.

This living legend of Bowling Green is a big-hearted, drawing, 67-year-old party who from early December to the middle of March each year performs magic from behind a red towel, bath size.

The name of the towel-toting legend is Edgar Allen Diddle.

He, for the benefit of all those who have been without the benefit of newspaper sports pages for the past 42 years, is head basketball coach at Western Kentucky State College.

Diddle has become a legend in and out of basketball circles for many reasons, only one of which is the red towel, bath size, that he always carried during a game and which has become his personal trademark. Also part and parcel of the Diddle legend is his incredible record as a coach, his art for coining new words, his humility and his humanness.

As a basketball coach, Diddle owns more records than you could shake a statistic chart at: most games coached, most games won, and most years as coach at the same location.

Now starting his 42d year at Western, Diddle is the only coach ever to participate in 1,000 or more games and to post more than 700 wins at one school. At the start of the 1963-64 season, an audit of his record shows 754 games won in the 1040 times his red-clad Hilltopper teams have taken to the floor. Western has won the championship of its conference, the Ohio Valley, six times and has been co-champion three times in 14 years. In addition, the Hilltoppers have been in numerous prestige-packed tournaments, including the NCAA six times, the National Invitational eight times and the Sugar Bowl meet on two occasions.

Despite his unmatched records, Diddle has remained as natural as freckles on a country boy's nose. He is the same folksy, slightly lisping man who came out of Adair County before World War I to play blocking back on the great Centre College football teams of that era. It was in 1922, after a short whirl as a high school coach, that he came to Western as coach of football, basketball, track and baseball.

The red towel, which during a game Diddle uses as a prop in one of the greatest one-man acts since the late John Barrymore was in his prime, isn't for show. He heaves the towel toward the rafters, beats it against the floor, wrings it in his hands, stuffs it into his mouth and buries his face in its scarlet depths as a means of letting off steam.

It all started years ago when, as now, in moments of excitement Diddle's palms would perspire. He began carrying the towel to wipe his sweaty palms, and it developed into a nervous habit that by now has become part of his legend.

As might be guessed from all the towelings, Diddle perhaps represents man's nearest approach to perpetual emotion. He plays every game as hard as any of his players. Every time a player comes off the floor, Diddle is on his feet to shake his hand, wipe his face with the towel and lecture him on sins of omission or commission.

He also is the first down the floor to shake the hand of the opposing coach after each game win or lose. This, plus his uncanny ability at getting the best from his players, has given him a standing just this side of sainthood in his profession.

His excitable nature and his natural lisp often have teamed to produce a bit of tongue-twisting that has resulted in the coining of the brand-new or the three-in-one combination words which are part of the Diddle legend.

Any time two or more Western graduates get together, Diddle stories eventually will be told. But the stories never are told maliciously or disparagingly; they're told in an almost reverential manner.

One story almost always told concerns the time, several years ago, when Diddle was having trouble in practice with "Red" McCrocklin, his All-America center.

"The trouble with you," Diddle finally sputtered in exasperation, "is that you're just too inde-damn-pendent!"

Some 20 years ago, Western was playing in Madison Square Garden and the game was closer than your next breath. Diddle lived an eternity as the lead changed hands. Only a few minutes remained to be played and guard Dero Downing was bringing the ball down the floor for Western. He had barely reached the center circle when he decided to shoot. As the ball left his hands, Diddle catapulted from his seat with a scream of rage.



In moments of despair, the Coach buries his face.



Coach Diddle points an accusing finger.

die catapulted from his seat with a scream of rage.

"I'll kill you," he roared, "I'll just naturally kill... did you ever see such a shot?"

The break in his shout came as the ball slipped cleanly through the hoop. Diddle heaved his towel almost to the ceiling, doubled over with joy and whooped:

"Whoo-o-o-ey! That's my boy. Just like I showed him to do!" (Downing is today Western's Dean of Admissions.)

Diddle was one of the first coaches to develop the pivot play, having struck upon the idea in the late 1920's. A player named "Curly" Ellis was on the firing line in this Diddle-dream play. It finally got so that Ellis could find the range on just about every shot.

"Coach," a spectator marvelled one day, "I believe he could hit a million from that spot."

"A million, hell," screeched Diddle as his enthusiasm again half-hitched his tongue, "Why, that boy could hit a thousand!"

After he had finished his play-

ing days, Ed Diddle, Jr., the old master's only son (he also has a daughter) was head coach at Middle Tennessee State, a Western league rival. The first meeting of father vs. son was a classic. Young Ed pulled out all the stops before losing a close decision. When the game was over, tears trickling down his face, he came up the floor to congratulate his father.

"Eddie," consoled old Ed, "just remember: win or lose, always be sportsmanship; and on top of that, we did keep it in the family."

Even though he is a strict disciplinarian, his players swear by — seldom at — him. Discipline is an integral part of the Diddle basketball philosophy. Perhaps no coach keeps a closer eye on his players day and night than does Diddle. But than at few other colleges does the squad live in the home of the coach.

Some years back a two-story annex was built onto the rear of the large stone house on the edge of Western where the

Diddles live. The Western goal miners moved into the building, two to a room, and it was dubbed "Diddle Dorm."

However, Diddle Dorm is much more than just another residence hall. It's a kind of co-operative living arrangement where the players are required to keep their own rooms whistle-clean, and where they share, two players each week, the job of policing and cleaning halls, bathrooms and the recreation room.

Those athletes who have played for Diddle are by no means the only students at Western who have fallen under the influence of Diddle. They say in Bowling Green that if all the young people who have been helped by him, financially or otherwise, should get together, they probably would fill the beautiful new arena being dedicated tonight. For besides establishing his king-size batch of basketball records, he has opened his heart and his pocket-book to students — athletes and non-athletes alike.

One story is sufficient to prove this side of the Diddle nature.

More than 30 years ago a young fellow, his football-playing days at Western ended by an injury, was sitting alone on the campus, broke and despondent. Diddle happened by and asked why the long face. The boy explained his predicament and said he was getting ready to go home.

Without saying a word, Diddle motioned the boy into his car and drove to a downtown bank. There he signed a note for \$25 which enabled the boy to remain in school.

The boy was Dr. Kelly Thompson, who just happens to be president of Western today.

All of which explains in part the character of the man with the red towel who became a legend in his own lifetime.

## 700th Win

Continued from page 7

with a record of 771 victories and 233 losses.

Western students may look back with admiration on that night of festivities for another reason. Prophetic of today's dedication of the new Academic-Athletic Building were these words spoken by Lieutenant-Governor Wyatt: "As I look about tonight and see every inch of space occupied, even more than occupied, I know the message you want me to take back to Frankfort is that Western wants a new symnasium."

Frankfort received the message, for nearly four years later that statement has at last come true.

**SUPPORT THE  
HILLTOPPERS**

**BEST OF LUCK HILLTOPPERS  
IN THE NEW ARENA!**

**TRY OUR CURB SERVICE**

**HAMBURGERS 2 for 25¢**

(CURB AND CARRY OUT ONLY)

**INSIDE SERVICE—EVERYTHING FROM SNACKS**

**TO A FOUR COURSE MEAL**

**College St. Inn**

223 College St.

**"Where Good Sports And Good Food Meet"**

**Western Makes Another Hit**

**Congratulations**

**To**

**All Of Western**

**On The Dedication Of**

**E. A. Diddle Arena**

**HALL'S MEN'S SHOP**

422 Main

**On The Square**



A stoic Mr. Diddle awaits the inevitable.

## Students Speak Highly Of Building

Continued from page 1

the training of better teachers."

The Foreign Languages department, newly housed in the building, is served by a full complement of the finest in modern language laboratory equipment. The lab has been the object of student and faculty praise all semester.

"It is a tremendous aid in improving oral skill in a language," was a typical comment, by Judie Montgomery, senior French major, from Glasgow.

Housed also in the giant building is the Military Science department. The building contains for that department, regular classrooms, rooms for ordnance instruction and space for rifle storage.

"This is like a dream come true for all ROTC men," an ROTC officer, Donald Jones, said. Jones, a senior biology major from Radcliff, was particularly impressed by the sections of the building reserved for the Military Science department. "The improvement in the facilities is remarkable."

Some were awed by the great size of the structure.

"It's so big," gasped Linda Rascoe, whose All-America brother helped to make the large arena possible. "I feel about like an ant would feel if he were looking at the sun," said the sophomore elementary education major from Owensboro.



SINKS NO. 1... Coach E. A. Diddle sank the first basket ever made in the new arena which bears his name shortly after the goals were installed.

# Count Basie Opens Arena Music Series

The rhythm of basketballs bouncing against backboards will give way to the swing of jazz this Thursday night Dec. 12 at 7:30 when jazz king Count Basie and his internationally applauded orchestra perform in Western's new Academic-Athletic Building.

The famous jazz troupe, billed as "the most explosive force in jazz," will be the first major attraction to appear on the portable stage in the E. A. Diddle

die Arena. Sponsored by the College, the program is the first in a series of attractions by major musical aggregations which will appear here.

Count Basie and his orchestra have been winning awards and playing before packed houses in the United States and Europe for over 25 years.

Their achievements include the winning of American polls, the International Critics' poll in Down Beat, and the readers' poll of Le Jazz Hot, a French monthly.

A recent personal honor for Basie was an invitation to play at the Inaugural Ball for the late President Kennedy.

Tickets for the band's performance, which promises to be a major event of the College calendar, are on sale now at the Paul Garrett Student Center, the College Business Office, and in all dormitory offices. The price of admission is \$1.00 in advance, \$1.50 at the door.

Tickets may also be purchased by mail from the office of the Dean of Students by enclosing a self-addressed stamped envelope and cash, check, or money order to cover the price of the tickets. The tickets are also on sale at various locations in downtown Bowling Green.

## Dedication Set

Continued from page 1

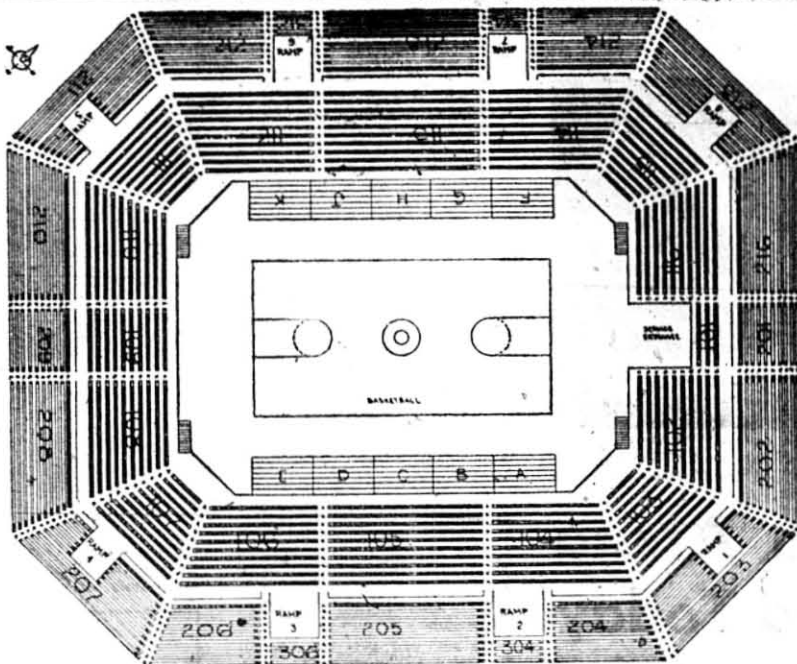
partments. The Department of Foreign Languages has been conducting classes there since September. Departments of Military Science and Physical Education took residence only recently.

The Academic-Athletic Building and E. A. Diddle Arena will serve as a cultural center for southern and western Kentucky.

To Be Used As Auditorium  
As an auditorium for concerts, dramatic presentations, and lectures, the arena will have a great impact upon the aesthetic and intellectual enrichment of Western and southern Kentucky.

As an athletic arena and gymnasium, the arena ranks among the finest and most modern campus athletic facilities in the world.

## SUPPORT THE HILLTOPPERS



ARCHITECT: ATHLETIC BUILDING  
BOWLING GREEN STATE COLLEGE  
BOWLING GREEN, KY.

THIS FLOORPLAN of the E. A. Diddle Arena shows the location of the different seating sections in the arena, as well as main ramp entrances.

for sighs

Try this

Before or after the game...or for a tasty snack anytime...bring your date to McDonald's. It's always a pleasure to dine here. Our Hamburgers—made with 100% pure beef ground fresh daily—are served hot off the grill on toasted bun. Our Shakes are the good old-fashioned kind. Our French Fries—crisp, golden brown and piping hot—you never had 'em so good. Come in today for the tastiest food in town at prices that please!

Look for the golden arches

**McDonald's**

31-W BY-PASS

## IF -

You have a camera,  
Even the simple  
snapshot type,

You can make snap-  
shots, (playing floor  
only) without flash  
bulbs, in the new E.  
A. Diddle Arena.

The playing floor is  
brilliantly lighted.

Regular black-and-  
white Veri chrome  
Pan film, with which  
your camera is usu-  
ally loaded, does  
fairly well, but Tri-X  
film is better.

Fill-in Flash will help  
on close-ups.

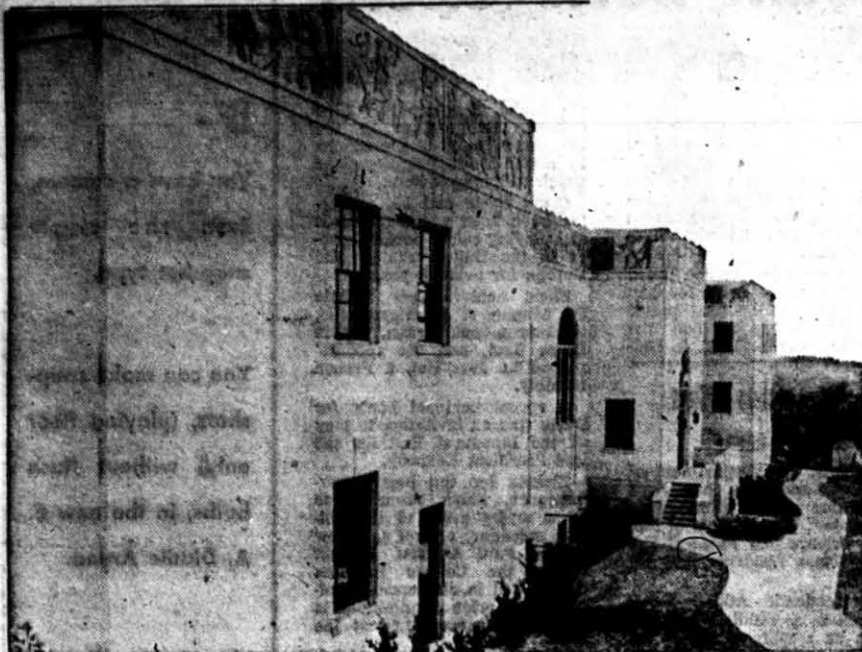
Color Slides, Color  
Movies, also, with-  
out additional light,  
But use Daylight  
film, or Type A Film,  
with Type A Filter.

Get ready now for  
December 7 basket-  
ball action and half-  
time honors for Mr.  
Diddle.

Come in today for  
your supply of film,  
and free instructions  
on how to use it.

**CHES JOHNSON**  
**PHOTO CENTER**  
928 State





**FUTURE COLLEGE LIBRARY**... Western's Physical Education Building will soon be reconstructed and enlarged into a modern college library. The fresco panels around the roof of the building will be removed and used in the new A-A Building. When completed, the new library will contain more than four times as much floor space as the present library building.

## Old Gymnasium Faces Future As Modern College Library

By Karen Durbin  
Since the completion of the Academic - Athletic Building, many are wondering what is to become of the old gym.  
Plans are being made to re-

construct and enlarge the old gym and convert it into a library.  
The new library will consist of three floors. The ground floor will include a reading room for

the Library Science department, classrooms and offices for this department, and the stacks. Study areas will be available down in the stacks with individual study carrels.

### Main Floor

The main floor will consist of offices, circulation desk, lounge area, reference reading room, and a room for the rare book collection.

On the second floor will be found a reserve room, periodical room, microfilm room and a staff lounge. Also included will be a special room for the art library and slides.

In case you are wondering about the addition of the second floor, the present balcony will be taken out and one mass room will be constructed.

### Open Space Available

It is easily understood why a new building was not constructed for the library and this is well summed up by Dr. Raymond L. Cravens, dean of the college. He said, "The old gym is adaptable to conversion into the library because of the open spaces available. Its locality is ideal and convenient for both students and faculty and it is more easily subject for future expansion."

He also said that there would be twice as much square footage in the old gym than could be achieved by building onto the present library.

### Exterior Changes

The athletic figures, around the top of the old gym will be removed and replaced by solid panels. A new entrance, completely glass, will be constructed on the side adjacent to the football stadium.

Reserved space will be available for the football teams, both home and away, and for officials in this building during the football season. The new library will be completely air-conditioned.

Those serving on the committee for these plans include Mr. L. T. Smith, physical plant administrator, Dean Cravens, Mr. Dero G. Downing, dean of admissions, Miss Sara Tyler, head librarian, and Miss Marjorie Helm, director of library services.

Completion of the project is scheduled for next year.

## Ted Hornback On Way To Creating Own Legend

On his way toward creating a legend of his own at Western is Ted Hornback, the able assistant coach and head of the department of physical education, who is beginning his 25th year with Coach Diddle and the Hilltoppers.

An outstanding coach in his own right, Mr. Hornback has served as assistant and tactician for Mr. Diddle since 1939 and is credited with much of the success of Western teams by Coach Diddle himself.

After starring as a forward at Western during the 1927-28-29 seasons, Hornback began his coaching career at Corinth high school and in the first year lead his team to the state high school basketball championship. With the same team, the young coach finished third in the National High School tournament held in Chicago.

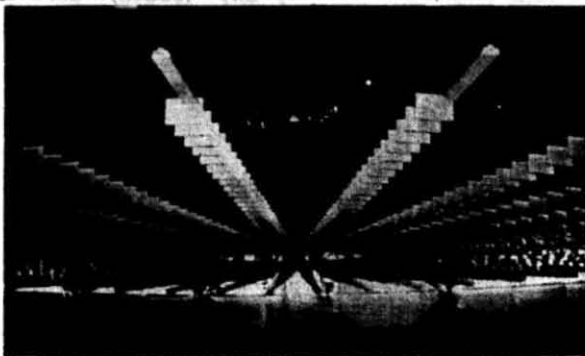
Hornback moved for one year to Elkhorn, West Virginia, but came back to Kentucky when he was named coach at Ludlow high school. He coached there for seven successful years before returning to his alma mater in 1929 as assistant basketball coach and member of the department of physical education faculty. He was named head of the department of physical education, health and athletics in 1947.



**TED HORNBACK**

In the spring, the athletic Hornback, who was also a star tennis player in his college days, coaches the Hilltopper tennis team.

His tennis teams have compiled a winning record almost as awesome as the Hilltopper basketball record with 128 victories and 27 losses in regular season play while winning 10 OVC titles over the past 15 seasons.



**ACOUSTICAL PANELS** hang from the roof of Western's E. A. Diddle Arena to improve the acoustics of that part of the building. Also shown in this picture is the "hub" of the bicycle wheel-type roof, the only one of its kind in the world.

## Acoustics In Arena To Be Tested Today

When you first walk into the E. A. Diddle Arena, you can't help but look up. You immediately see many square boards hanging from cables. There are 948 of them, which are made of styrofoam and measure two-by-one-half feet. These square boards are the secret of acoustics in the new arena.

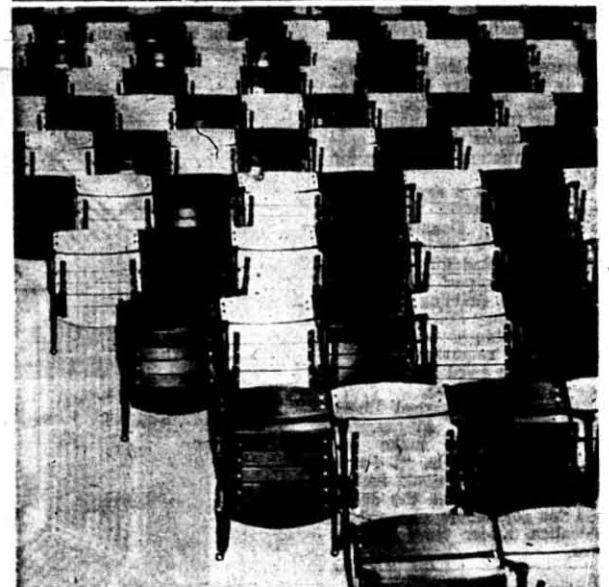
Acoustics may be an exact science, but the acoustics in the Arena will receive their first test today with the dedication ceremonies. Another big test of the acoustics will be December 12, when the Count Basie Orchestra will present a concert. The All-State Band and Chorus will appear in the arena January 9-11.

Also, while gazing at the acoustical boards, the visitor cannot help but notice the huge loudspeakers placed around the circle of lights. The loudspeaker system, installed by the DuKane Corporation, is capable of re-

producing all sounds with clarity and fidelity — from the lowest pedal pipes of the organ to the highest audible overtones of strings or flutes. They were built for use in arenas and music halls where reproduction of the entire audible spectrum is desired.

The arena has 12 microphone outlets, six on the main floor, four on the portable stage and two in the organ room. The controls for the public address system are located in a glass-enclosed room at the corner of the basketball floor. It is a fascinating room in which by the pressing of buttons every phase of the loudspeaker system is controlled.

Every loudspeaker has been placed carefully into position, so that the sound will be evenly distributed throughout the arena. When the arena is expanded to its seating capacity of 13,000, there will still be no sound problem.



**RED AND WHITE**... That's the color scheme carried out in the E. A. Diddle Arena's spectator area. Thousands of chair-type seats, alternately red and white, encircle the playing floor.

**Congratulations  
WESTERN!**

*Compliments*

*Of*

**Bowling Green Bank  
And Trust Company**

Home Office—903 College

Branch Office—31-W By-Pass

Good Only

Monday and Tuesday  
Dec. 9th and 10th

CURB OR CARRYOUT

31-W By-Pass

GOOD LUCK HILLTOPPERS

**FOOT LONG  
2 FOR 1 HOT DOGS 2 FOR 1  
RAY'S DRIVE-IN**

PRESENT ID CARD

OR

BRING THIS AD

INSIDE AFTER 8 P.M.

843-4397



**YULETIDE SPIRIT** was displayed by workmen at the A-A Building in December, 1961, as they employed the giant crane to hoist a Christmas tree to the top of one of the supports of the building, which was then still under construction.

## 336 Wins

Continued from page 6

(won 28, lost 8); 1937-38 (won 34, lost 3); 1941-42 (won 29, lost 5); 1947-48 (won 28, lost 2); 1953-54 (won 29, lost 3).

Western athletes played 33 seasons in the old gym. All but 13 of the home games were won by the Toppers.

Tonight a dream is realized by Coach Diddle as he opens his 42nd season at Western in one of the finest buildings of its kind in the country. The E. A. Diddle Arena's ultimate seating capacity of 13,000 is surpassed in the South only by Freedom Hall in Louisville. To close out his career in such a magnificent arena is a fitting memorial to the great coach whose record is unexcelled.

## Sports Slants

LARRY DYKES, Sports Editor



Tonight marks the end of a long and illustrious era, and the beginning of a new one. Gone are the days of the "old Red Barn" where so many Hilltoppers performed attained fame and glory. Gone are some of the most exciting moments in Western's celebrated basketball history which will linger in the minds of Hilltopper fans forever.

In a few years most of these events will have grown dim in the memory of the average fan and the talk will lean toward the new and spacious E. A. Diddle Arena and some new stars will be around to take the place of the past greats. There will be no Spoelstras, Crosthwaites, Osbornes, and Rascoes to come and some of these could be in the making this very season.

The man who is responsible for almost all of Western's renowned athletic fame on the hardwood is none other than Coach Ed Diddle. Tonight marks his 42nd opening season game as the head of the Hilltopper basketball teams. No other coach in the country can match his record and at the present no other prospects are in sight.

The current cage crop may not measure up to the standards of some of the past Hilltopper five's, but they have a one-chance-in-a-lifetime when they take the floor as the first team to play in the new Arena. Their formidable opponent is Vanderbilt, which year in and year out is a top threat in the always tough Southeastern Conference. Last year the Commodores squeaked out a victory over the Hilltoppers with a last second field goal. A win over the Commodores tonight would more than compensate for last year's defeat in Nashville.

A win tonight would be the spark needed to ignite the fuse of a team that has some outstanding qualities, but nothing can take the place of sheer work and the determination to win, which are the ingredients needed in the making of a winning season. The constituents will be needed against Vandy if a win is in store for the Toppers.

However, we have supplied the prescription for winning for the team and coaches, now the rest is up to you, the Western fan. Your support not only for the first game, but the remaining twenty is needed. Let's all be good sports ... fans! Back the Hilltoppers! !!



**HILLTOPPERS PRACTICE IN NEW ARENA** ... Western's varsity basketball squad managed to get in a few weeks of practice in the new arena before their dedicatory game with Vanderbilt. Western cage skipper E. A. Diddle directs the team through drills at a recent practice session.

## Diddle Tests Baskets, Finds Them Excellent

By Mike Ridge

"The gym and these goals are excellent. It is truly a dream come true," stated Coach E. A. Diddle, after putting his Hilltoppers through their paces, November 22, in the immaculate E. A. Diddle Arena.

America's winningest hardwood coach was at his best on the first day in the gym. But one look at the dual goals indicates a minute part on the arena's glossy innovations.

The basketball goals are similar only to the Little Red Barn's targets which also had a backboard, net, and hoop. The similarity ends abruptly.

**Hydraulically Operated**  
"Hydraulically operated" are the key words to the new shooting ranges in the Arena, according to service department director H. B. Clark, who later stated, "The goals are securely anchored to the floor. When pumped hydraulically, the goals move into a pre-set position."

The neonate hydraulic innovation is rare, but a necessity for the new arena. When the goals are "deflated", they can be removed from the floor and stored. This process will enable the portable stage to be seen

from the 13,500 seats without obstruction.

A scissor movement will fold the goals into a moveable bundle, with the backboard resting atop the structure. Steel rollers are used to transport the "complete compactness" of the goals when folded.

The advantages of such a process will enable those fans now sitting on the ends of the arena to see Western's first concert in the Diddle Arena, December 12, to be played by Count Basie and his world famous orchestra, with a flawless view.

One question has been raised by the limited audience who viewed Western's first practice session: Are the goals safe? Coach Diddle replied, "Yes, the goals are safe and they will be even safer when we add additional padding to the goals to protect the players."

One aspect is for sure — if Western hits those goals with absurd regularity, the goals won't be condemned.

The goals are just as versatile as the entire Academic Athletic Building, the new landmark of the Hill's physical plant. The building is truly a home for fun, study and entertainment.

# Diddle Took Cut In Salary To Get Coaching Job At Western In 1922

By Doris Pendleton

Throughout the years, much has been said and written about E. A. Diddle's great coaching skill, his winning career, and his famous red towel antics. But what is the "inner" Coach Diddle like? How did he get his start? What are his ideas and wishes concerning the game of basketball itself?

Over 40 years ago, in 1922, Diddle came to Bowling Green looking for a team to meet his Greenville High School basketball team. Greenville was scheduled to play Owensboro, but was turned back by a flood-swollen river.

"We came back into town looking for someone to play," he said. "We played and they liked my coaching so well they convinced me I should take the coaching job at Western."

"I took a big cut in salary — from \$250 a month to \$160 to come to Western — but it's been something I've never regretted."

In his 41 years of coaching at Western, Diddle has had only four losing seasons.

What is Coach Diddle's big dream?

"The only thing I still want to win, and I've got four years at the most to make it, is the National Collegiate title," he said on the night of his 1,000th game. "I guess you could say that's every coach's dream."

### Biggest Thrill

What has been Coach Diddle's biggest thrill as a coach?

"Well, there's nothing that gives me any more of a thrill than taking some country kid who is flat-footed, walks like he was following a plow, doesn't know much about basketball, and making something out of him. I want that more than winning."

How did Coach Diddle's red towel trademark come about?

"I've been carrying this red towel for a long time. Back when I first started coaching, my face used to get so hot dur-

ing a game that I had to use a wet towel to keep cool. I finally got over it, but the fans would never let me give up my towel. That's the way they know me."

### Well-Known For Stamina

Coach Diddle is well-known for his remarkable stamina. Although he has been in and out of the hospital many times, he always manages to return to the hard work involved in coaching. Only a month before his 1,000th game, he had undergone an operation, and on the night of the game was ailing with arthritis. "He was out in that cold all day Friday when he should have been before the fire," said Mrs. Diddle.

Approximately a month ago, he again entered the hospital for observation and treatment. He made it clear, however, that he would be out as soon as possible and return to the hardwood in preparation for the December 7 game with Vanderbilt.

## The Clothes Line



by George

## Five Simple Mistakes in Shopping

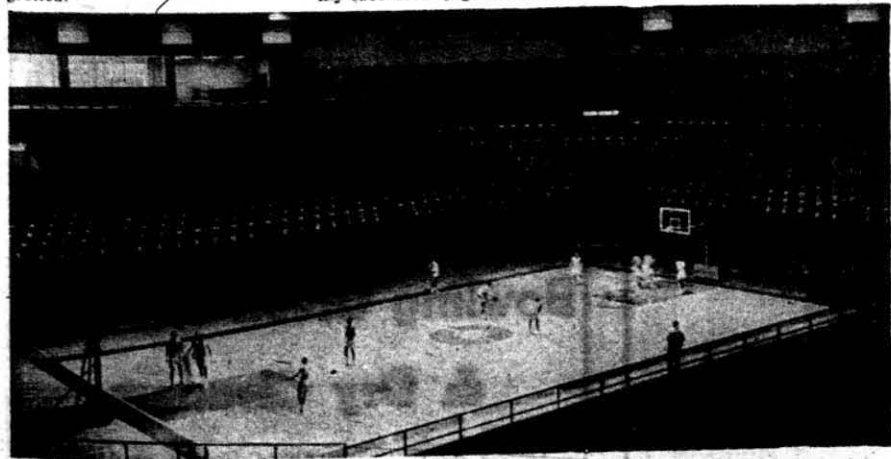
— and how to avoid them —

- **Mistake No. 1:** Buy from a store chosen at random.  
— **How to avoid:** Wynn Watson has solved this problem by buying from the **FASHION HOUSE**, a place she well knows. This week Wynn bought a white shift with light blue trim.
- **Mistake No. 2:** Shop alone.  
— **How to avoid:** Follow the example set by the Washer sisters and shop in pairs. Kay, Pi Sig, and Sherill, Zeta, stopped by the **FASHION HOUSE** and both decided on shoes by Aigner.
- **Mistake No. 3:** Buy an inferior product.  
— **How to avoid:** Buy the best-buy Villager!  
Atha Browning and Ellen Thompson bought the best. Atha bought a blouse and Ellen bought a burgundy jumper—both by Villager.
- **Mistake No. 4:** Buy without direction.  
— **How to avoid:** Change your name to Nancy Conover because Nancy has a direction; the Yale-Harvard football game. For her weekend in New Haven, Nancy selected blue stretch pants by Mr. with a matching sweater.
- **Mistake No. 5:** Mess around until someone else has bought what you want.  
— **How to avoid:** Don't mess around!  
Suzanne Butts didn't mess around when she picked out hat suspender dress by Jr. House. Rose Mary Oliphant didn't hesitate long when she found a white crepe blouse to go with her new jumper. They were all found at the **FASHION HOUSE**.
- **It is never a mistake to shop at the FASHION HOUSE—the store with the most of the best—**

George's "Pick's of the Week"

1. Jr. Miss white wool flannel with blue trim (Frannie, this is just what you were hunting for.)
2. A new shipment of mohair V-neck sweaters in blue and yellow for \$14.95.
3. Christmas items galore in the Gift Corner (Don't wait too long.)

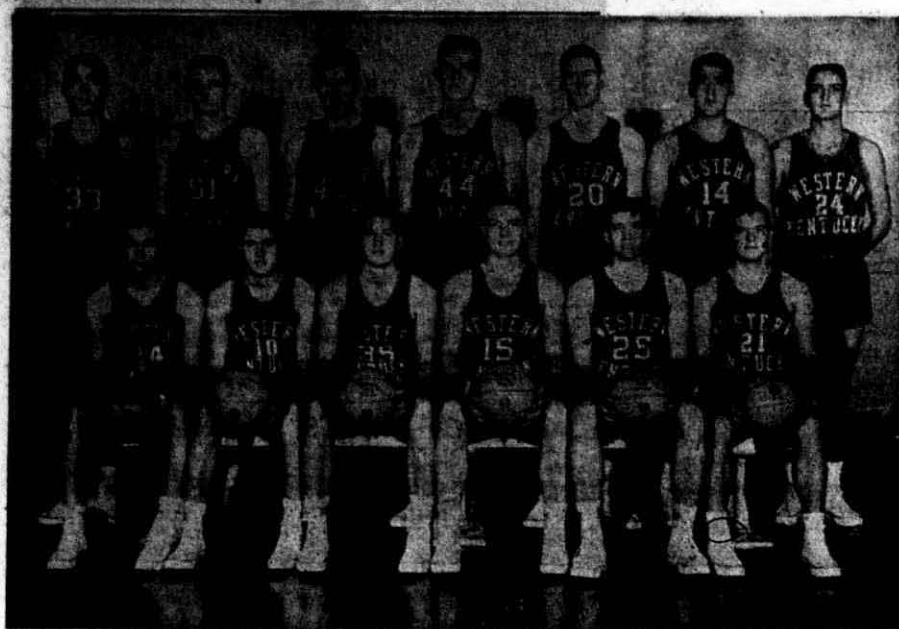
So long for now,  
George



**SCRIMMAGE IN ARENA** ... Coach Diddle's 42nd Hilltopper basketball team runs through an intra-squad scrimmage in Diddle Arena shortly after installation of goals in the building. Also visible in this picture are many of the 8,500 seats in the Arena.



THE VANDERBILT COMMODORES, Bowling Green, Kentucky  
SATURDAY, DECEMBER 7, 1963



1963-64 HILLTOPPERS . . . Meeting the Vanderbilt Commodores in tonight's dedicatory game in E. A. Diddle Arena will be this varsity team. They are (Seated, from left) Keller Works, Harel Carrier, Darel Carrier, Ray Rhorer, Charles Shuffield, Walker Belcher; (standing, from left) Ralph Townsend, Bane Sarrett, Ronnie Kidd, Glen Marcum, Ray Keeton, Steve Cunningham, and Ralph Baker.

# Topper Lettermen Expected To Carry Most Of Burden In Season Opener

It's Western versus Vanderbilt tonight in the dedication game in the new E. A. Diddle Arena. The Hilltoppers will be out to improve their last season's record of five wins and sixteen losses, and a win over Vandy would start them off on the right foot.

Returning lettermen Darel Carrier (19.2), Ray Keeton (8.8) and Ray Rhorer (6.9) are expected to carry most of the burden. Gone from last year's squad are top scorers Bobby Jackson (18.5) and Jim Dunn (13.1), but sophs Bane Sarrett, Steve Cunningham, and Ronnie Kidd are expected to break into the starting lineup.

**Possible Starters**  
Carrier and Rhorer are slated to open at the guard spots, and Keller Works and Charles Shuffield will be added reserve strength. Also working for a

starting berth is Walker Belcher, a 5-10 junior college transfer.

Coach Ed Diddle, beginning his 42nd season as head basketball mentor, can look for Ray Keeton to be carrying most of the load at the forward position. Keeton's running mate at the other forward could be either Bane Sarrett or Ralph Baker. Baker, a 6-4 junior, has a year's experience under his belt, while the 6-6 Sarrett, a tremendous shot, is only a soph.

It looks as though the center post will go to either 6-6 Ronnie Kidd or 6-5 Steve Cunningham. Both are sophs and are short on experience.

**Vandy Has 2 Wins**  
Vanderbilt, with two wins to their credit already, has three of five starters back from last season's team, which finished on a high note winning all five of

their last conference games. The Commodores have six returning lettermen back led by junior guard Roger Schurig. Schurig was the top scorer as a soph and hit the last second field goal last year that defeated the Hilltoppers 69-71 in Nashville.

Also back are Bob Grace, a 6-7 junior from nearby Christian County and 6-7 Bob Hines, a senior.

The Commodores will have a bench full of sophs, any one of whom could break into the starting lineup anytime. Garner Petrie, 6-10, and 6-3 Wayne Calvert of Allen County, both Kentucky high school products give Vandy the added reserve strength.

It's going to take an all out effort for the Hilltoppers to upset the Commodores, but the Toppers will have the advantage of a new gym and a standing room-only crowd of 8,500 to cheer them on.



"Well, there's no rule against it, as long as he has a 'C' average."

## KENTUCKY COLONEL MOTEL AND RESTAURANT

FOR THE FINEST IN ACCOMODATIONS  
FOR FRIENDS AND GUESTS ANYTIME  
WONDERFUL FOOD SERVED IN A  
DELIGHTFUL ATMOSPHERE

FOR RESERVATIONS PHONE 842-1681  
JUST 2 BLOCKS NORTH OF THE BRIDGE  
ON 31-W.



This Arena Is A  
Great Monument To  
Coach E. A. Diddle  
His Staff and Western

We suspect an even greater monument is represented by the lives of all former members of Western's great teams.

*Congratulations*

**Bowling Green Laundry & Dry Cleaners**

10th & Center Ph. VI 2-5604



PRE-GAME WORRY shows on face of Coach Diddle.

1963-64 VARSITY BASKETBALL SCHEDULE				
Day	Date	Opponent	Place	
Saturday	December 7	Vanderbilt University	Home	
Saturday	December 14	*Middle Tennessee State	Home	
Tuesday	December 17	West Texas State	Home	
Friday & Saturday	December 27 and 28	Vanderbilt Invitational Tournament	Nashville	
Saturday	January 4	DePaul University	Home	
Monday	January 6	*Eastern Kentucky State	Richmond	
Tuesday	January 14	*Tennessee Tech	Home	
Saturday	January 18	*Murray State	Murray	
Thursday	January 23	*Morehead State	Home	
Wednesday	February 5	*Austin Peay State	Home	
Friday	February 7	*Tennessee Tech	Cookeville	
Saturday	February 8	University of Tampa	Home	
Tuesday	February 11	*Morehead State	Morehead	
Saturday	February 15	*East Tennessee State	Home	
Tuesday	February 18	*Middle Tennessee State	Murfreesboro	
Saturday	February 22	*Murray State	Home	
Tuesday	February 25	LaSalle College	Home	
Thursday	February 27	*Austin Peay State	Clarksville	
Saturday	February 29	*Eastern Kentucky State	Home	
Tuesday	March 3	*East Tennessee State	Johnson City	

\* Indicates Ohio Valley Conference Games

CONGRATULATIONS

AND

BEST WISHES

TO PRESIDENT THOMPSON,

COACHES DIDDLE AND HORNBACK, AND

WESTERN KENTUCKY STATE COLLEGE

PLAZA PHARMACY

LAUREL AND CABELL

"Southern Kentucky's Finest"

# Diddle Hit 1000-Game Mark On Jan. 6, 1962

By Doris Pendleton  
"I would do the same thing over at the same place, with the same friends. . . I will never quit."

The occasion for these famous words from Coach E. A. Diddle was his 1,000th ballgame, played on January 6, 1962, before a crowd of over 4,000 in Western's Red Barn. He had just been presented with 1,000 silver dollars — one for each game he had coached.

The 1,000th game, played between Western and New Mexico State, ended in a 71-67 triumph for the Hilltoppers. The presentation ceremonies occurred at halftime.

The 1,000 shiny silver dollars were brought out 100 at a time in red towels and dumped into a little red wagon by the 12 cheerleaders, who also showered Coach Diddle with kisses.

**Check Presented**  
W. B. "Six" Henderson, chairman of the downtown fans' committee which raised the \$1,000, also had the pleasure of presenting Diddle with a check for \$235, which had been raised over the \$1,000 mark. He called Diddle "the man many of us believe to be the outstanding basketball coach in the world."

Western President Kelly Thompson said, "Forty seasons and 999½ games ago, Ed Diddle started his almost unbelievable regime as head coach on this old hilltop." He continued, "It was the start of the greatest basketball coaching record in the history of basketball."

**Receives Trophy**  
Edwin R. Ward, president of the "W" club, presented Diddle with a trophy emblematic of this 1,000th game.

The Western Band played "For He's a Jolly Good Fellow," and the crowd arose and gave the skipper two standing ovations.

In response to all the applause, Coach Diddle commented: "I am very grateful . . . for having a great assistant coach like Ted Hornback . . . for that check and for that little red wagon. . . ."

"I would do the same thing over at the same place, with the same friends. . . I will never quit. . . I will still be around when I'm not eligible to coach. I don't know how they'll get me



DIDDLE'S "LITTLE RED WAGON" was full of silver dollars on January 6, 1962, as he made basketball history by coaching his 1,000th game at Western. Western fans donated enough money to provide the veteran skipper with a silver dollar for each game plus \$235 extra. Edwin R. Ward, president of the "W" club, presented Coach Diddle with a trophy emblematic of his 1,000th game.

off campus, because I'm not going to get off."

**Record Setter**  
Coach Diddle must retire from active coaching when he reaches the age of 70. He has won more games at one school than any other coach in history. Going into his 1,000th game, he had won 735 and lost 264 games.

During the pre-game activities, Diddle said, "It feels mighty fine to be going for my 1,000th, but for some reason, it seems like I've been here at Western only a short period of time. You know, they're going to make me retire in four years, but I'll still be around to stir things up."

Later on he remarked, "The only thing I claim to be famous for is that I'm probably the only coach in the country nobody ever tried to fire. I'm proudest of all for having friends."

Players who saw action for that famous game included Bobby Rascoe, Harry Todd, Jim Dunn, Darel Carrier, and Doug Smith.

Among other honors Diddle received soon afterwards was an invitation extended by the Kentucky House of Representatives to appear before that body in the 1962 session "for the purpose of bringing any message he may care to do so."



JANUARY, 1963 . . . This aerial view shows the central portion of a unique roof in place in the center of the arena. The roof, termed a "bicycle wheel" type, is supported by 36 steel trusses, each 136 feet long and 8 feet high, plus 72 cables similar to those used in suspension bridges. The lower of two steel rings which form the hub of the wheel can be seen atop posts which were removed when the roof was in place.

**Congratulations To  
Coach Diddle And The  
Western Hilltoppers**

**Kelley Office Equipment Co.**

STATIONERS—PRINTERS

OFFICE OUTFITTERS

1019 College

Ph. 842-2456

SOON TO BE 4 TIMES STRONGER

**WBGN**

KC 1340 KC

In our 5th year of service to Bowling Green and Western Students.

★ Jerry Goad

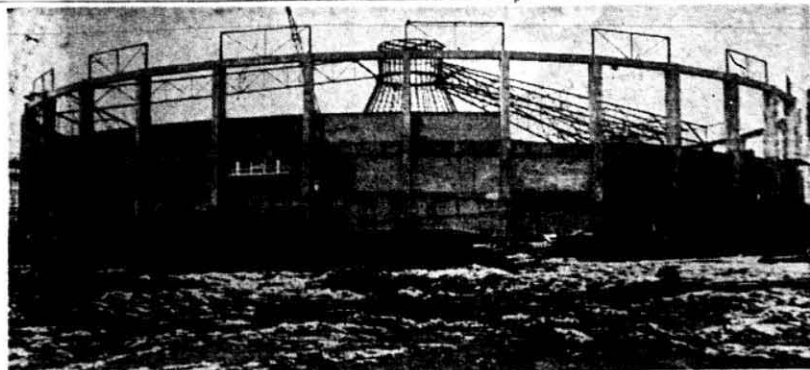
★ Lee Denney

★ Gene Holly

★ Dave West

Campus Comments

*Good Luck Western!*



FEBRUARY, 1963 . . . With the steel rings in place, workmen defied cold weather and put the steel trusses which support the roof of the Academic-Athletic Building in place.



CHEERING THE HILLTOPPERS during tonight's game with the Vanderbilt Commodores will be these six varsity cheerleaders. Clockwise from 3 o'clock they are: Sandy Griffiths, Bonnie MacDonald, Anne Coop, Dottie Adkins, Sylvia Terry, and Christine DeVries.

**CONGRATULATIONS  
E. A. Diddle And Western!**

*We Join Your Fans In Waving The  
"Red Towel Of Victory" On Your Achievements*

*"Whenever You Think Of Sports Equipment,*



*Is Your Best Bet"*

926 STATE STREET



# GOOD LUCK

from Your Coca-Cola Bottler



BOTTLED UNDER AUTHORITY OF THE COCA-COLA COMPANY BY

BOWLING GREEN COCA-COLA BOTTLING WORKS.