

2012

# UA3/9/2 Craig Alumni Center & Foundation Building

WKU Planning, Design & Construction

Follow this and additional works at: [https://digitalcommons.wku.edu/dlsc\\_ua\\_records](https://digitalcommons.wku.edu/dlsc_ua_records)



Part of the [Interior Architecture Commons](#)

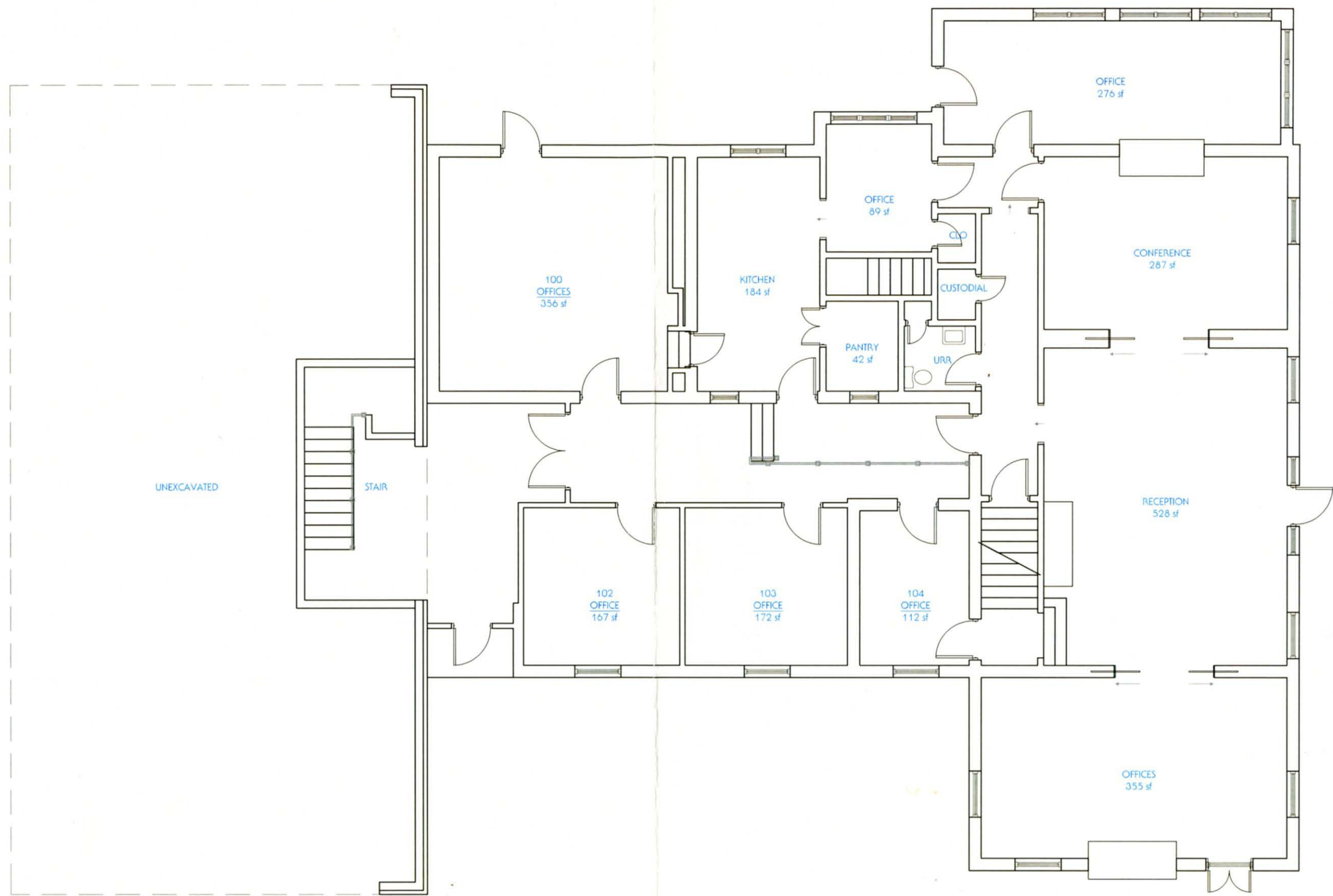
---

## Recommended Citation

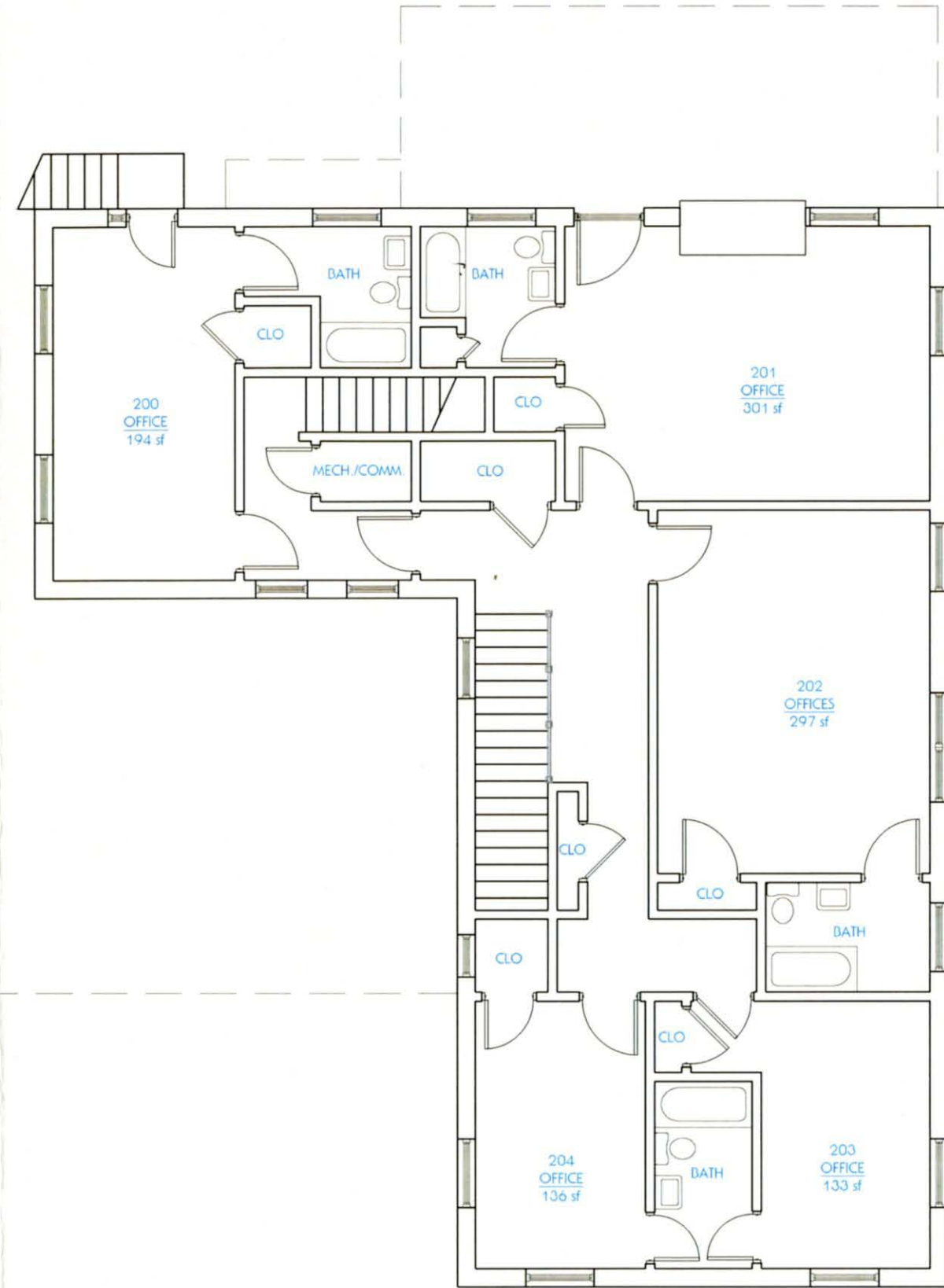
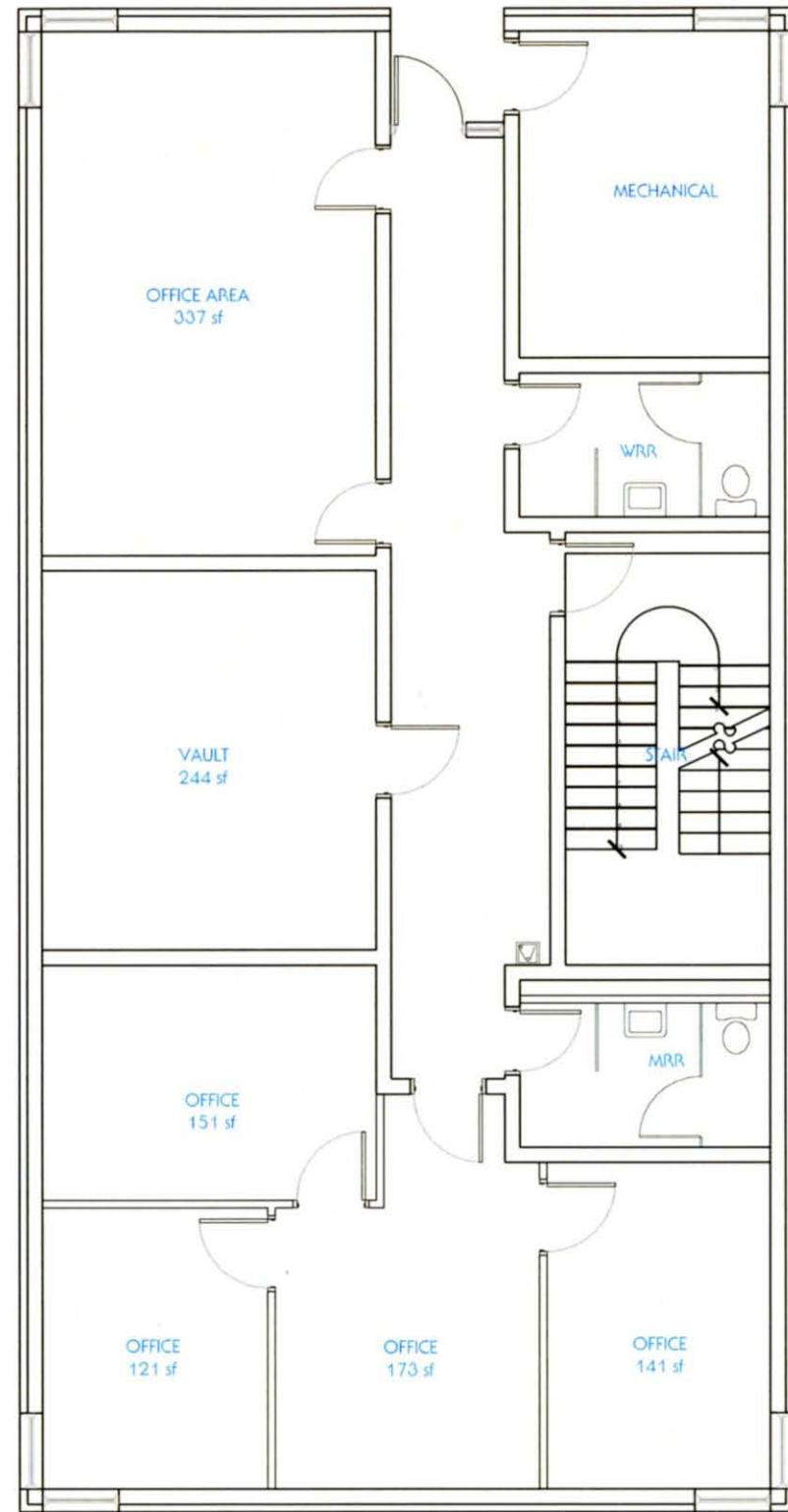
WKU Planning, Design & Construction, "UA3/9/2 Craig Alumni Center & Foundation Building" (2012). *WKU Archives Records*. Paper 6882.  
[https://digitalcommons.wku.edu/dlsc\\_ua\\_records/6882](https://digitalcommons.wku.edu/dlsc_ua_records/6882)

This Article is brought to you for free and open access by TopSCHOLAR®. It has been accepted for inclusion in WKU Archives Records by an authorized administrator of TopSCHOLAR®. For more information, please contact [topscholar@wku.edu](mailto:topscholar@wku.edu).

1st floor



2<sup>ND</sup> floor



3<sup>RD</sup> floor

