

Western Kentucky University

TopSCHOLAR®

WKU Archives Records

WKU Archives

10-23-1965

UA3/3/1 Margie Helm Library Open House

WKU President's Office - Thompson

Follow this and additional works at: https://digitalcommons.wku.edu/dlsc_ua_records



Part of the [Higher Education Administration Commons](#), [Library and Information Science Commons](#), [Mass Communication Commons](#), and the [Public Relations and Advertising Commons](#)

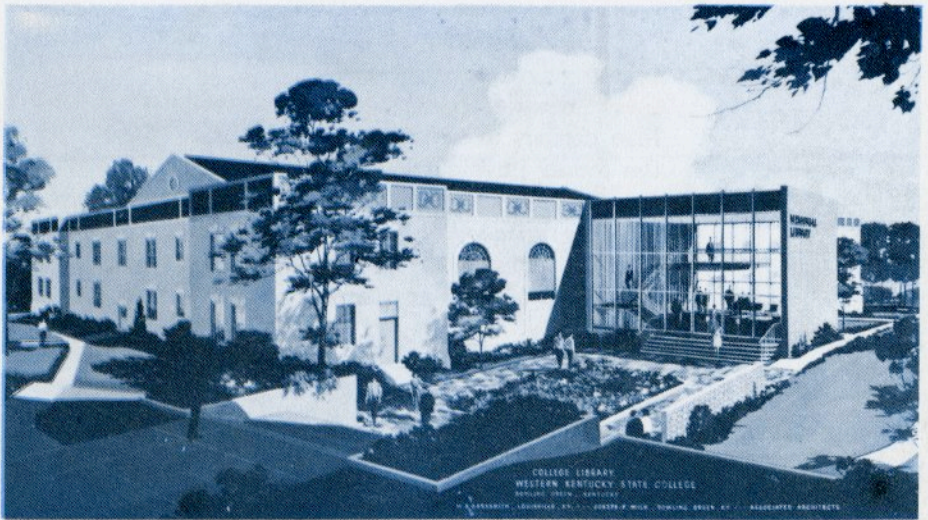
This Article is brought to you for free and open access by TopSCHOLAR®. It has been accepted for inclusion in WKU Archives Records by an authorized administrator of TopSCHOLAR®. For more information, please contact topscholar@wku.edu.

46
Western Kentucky State College

Bids You

A Cordial Welcome

To



THE MARGIE HELM LIBRARY

open house

9:30 A.M. to 1:00 P.M. And 4:30 P.M. to 6:00 P.M.

October 23, 1965

The Margie Helm Library

The Margie Helm Library, opened at the beginning of the current academic year, gives Western one of the finest libraries to be found on any college campus in the South. Created from the former Physical Education Building, it contains nearly 100,000 square feet of floor space and has a capacity of 400,000 volumes, approximately three times that of the former library.

The beautiful foyer with its free-hanging stairway is visual evidence of the wonders that can be worked in metal, stone and wood by modern architects and craftsmen. It is a fitting entrance to the air-conditioned beauty and utilitarian interior of a building that will enhance study and learning for thousands of young Kentuckians in the years to come.



Circulation Desk and Browsing Area



Reference Room