

2

W e e v i l y      W h e a t



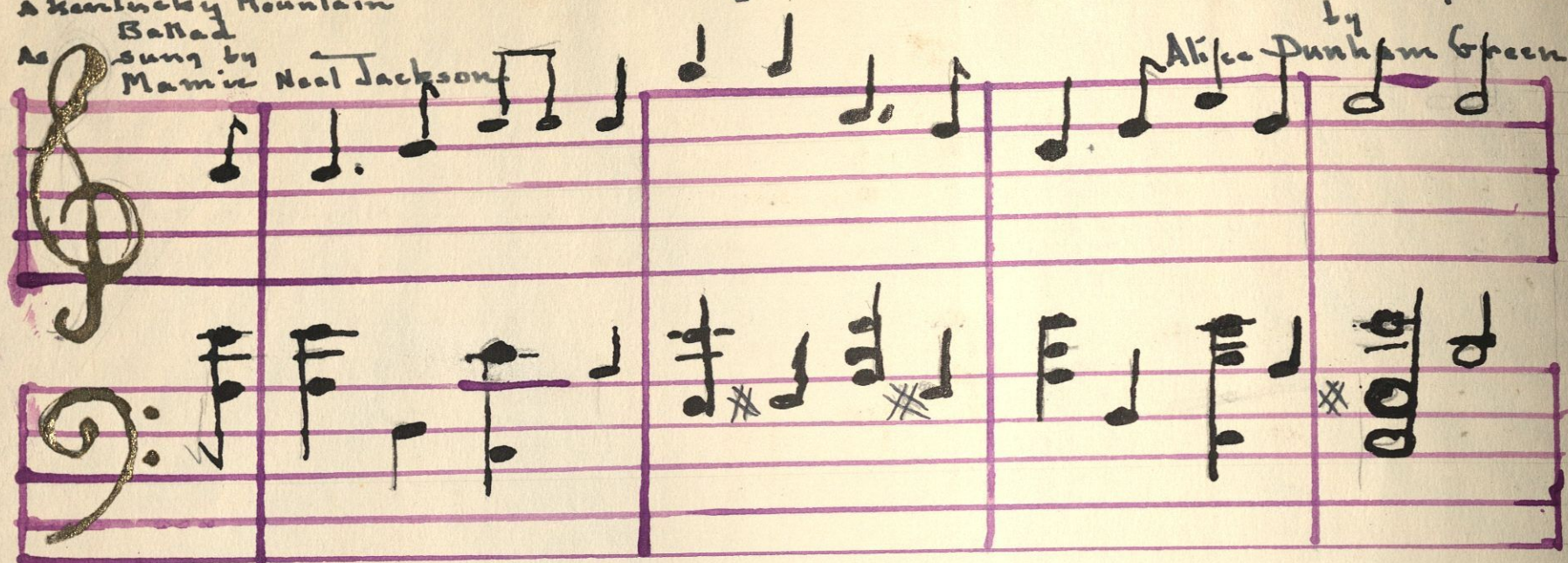
# Weevily Wheat

A Kentucky Mountain

Ballad  
As sung by  
Mamie Neal Jackson

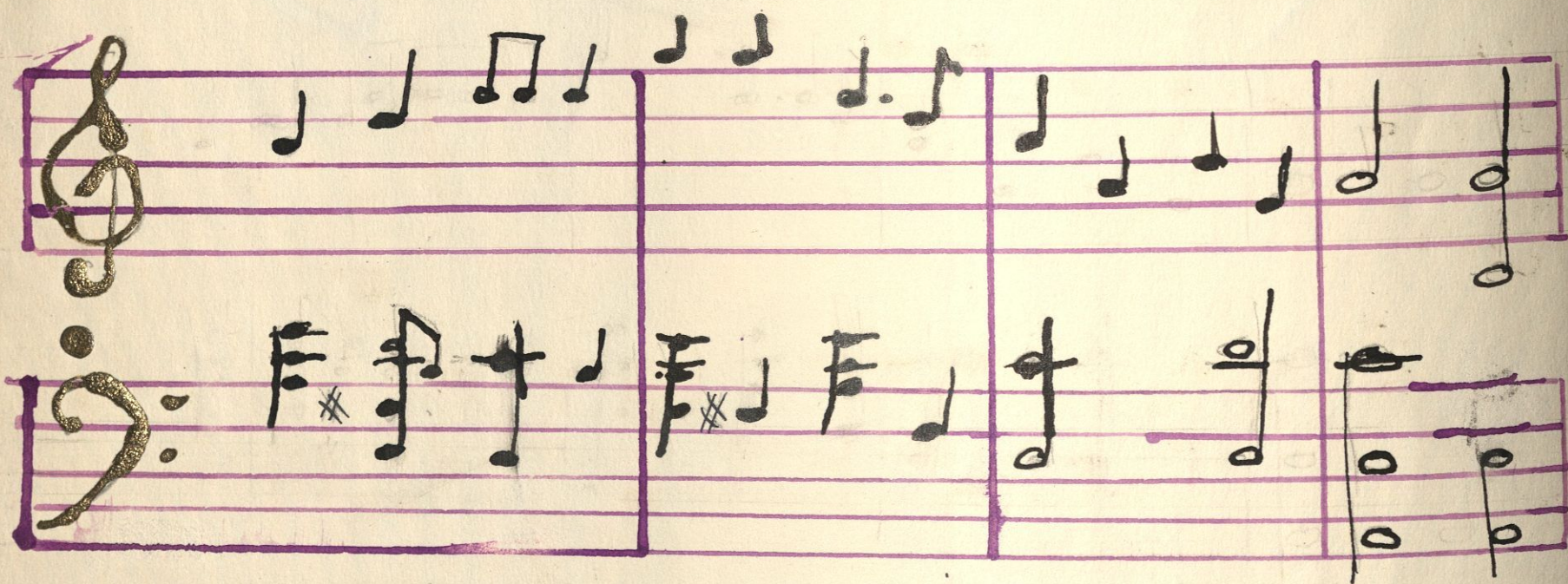
Musical Arrangement

by  
Alice Dunham Green



Come all ye HITHER AND TRIP TOGETHER IN THE MORNING EARLY

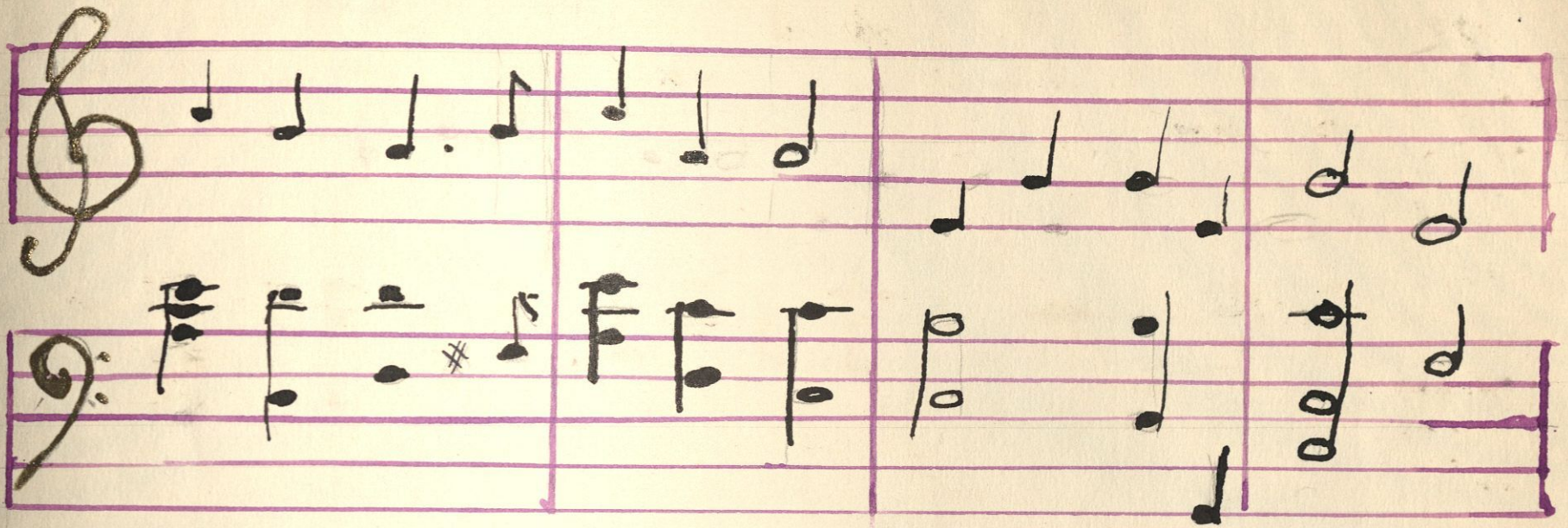
Weevily wheat aint FITTEN TO eat NEITHER IS YOUR BARLEY



Heart AND HAND HERE we STAND. Tis TRUE I love you DEARLY

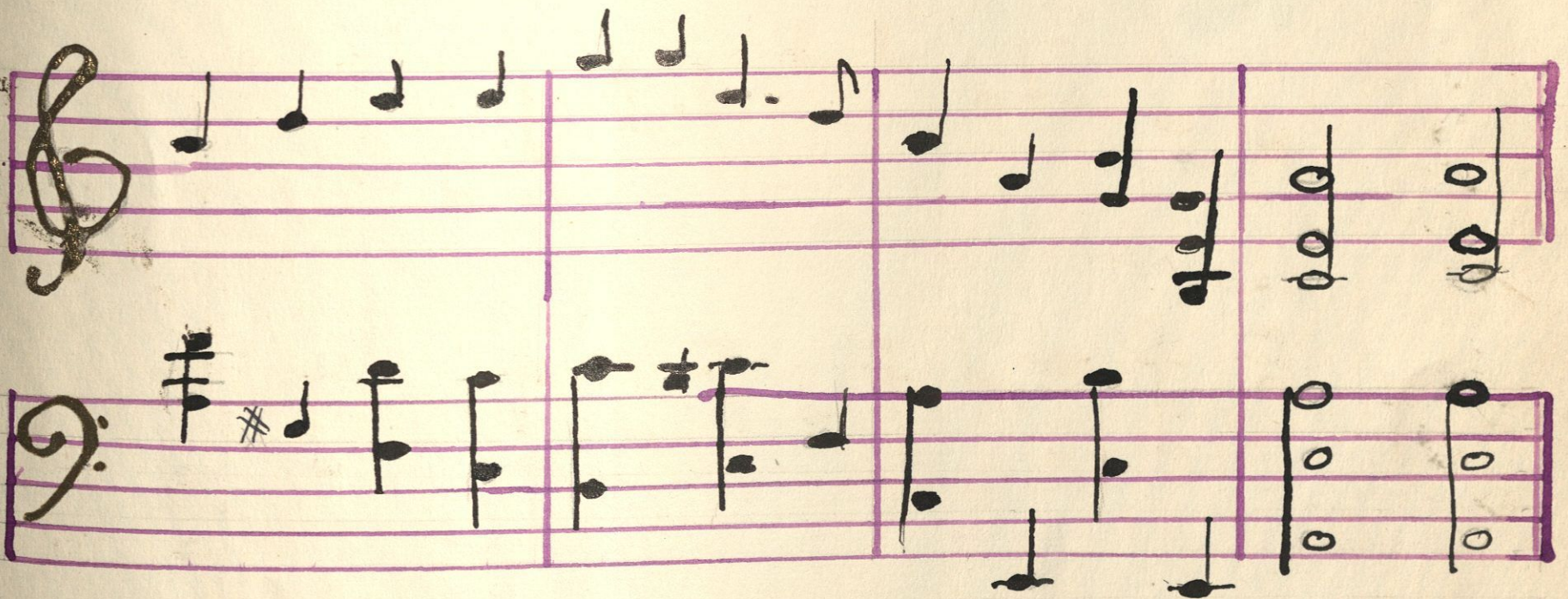
I WANT SOME MORE OF THAT GOOD OLD WHEAT TO MAKE A CAKE FOR CHARLEY





CHARLEY HE'S A HANDSOME MAN. CHARLEY HE'S A ROWDY

CHARLEY HE'S A HANDSOME MAN CHARLEY HE'S A DANDY



CHARLIE LOVES TO GO TO TOWN AND TELL THE LADIES "HOWDY"

CHARLIE LOVES TO GO TO TOWN AND BUY THE LADIES CANDY